

DVD Studio Pro

Creating Menus

Part 1: Getting Started

Part 2: Creating Buttons

Part 3: Adding Title, Text, and Sound

► **Part 4:** Creating an Intro Menu ◀

Part 5: Navigation and Drop Zones

Part 4

Creating an Intro Menu

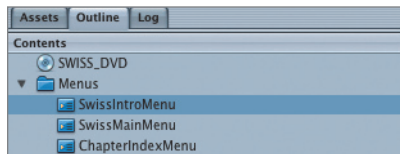
NOTE ► This is the fourth part in a series of tutorials that build upon each other. Before beginning this part, make sure you've completed the exercises in Parts 1–3.

You are about to build an exciting introduction to the Swiss DVD using content from your SwissMovie asset file. The introduction menu will then transition to the main menu.

DVD Studio Pro will automatically place the matching audio for the video that you'll use for the intro menu. To ensure that your new intro menu is the first thing to play, you'll need to change the first play from the SwissMovie track to the SwissIntroMenu.

SwissMovie contains a section that would work perfectly as an introductory video segment for this DVD. Follow these steps:

- 1 Click the Outline tab, and select the SwissIntroMenu.

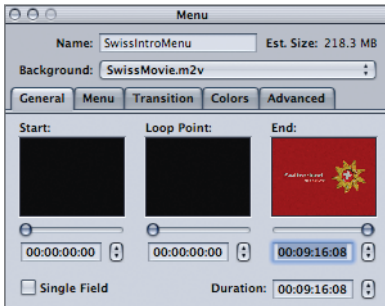


- 2 From the Assets tab, select **SwissMovie.m2v**. (it's in the SwissMovie folder) Drag it onto your Menu Editor, and choose Set Background when the Drop palette appears.

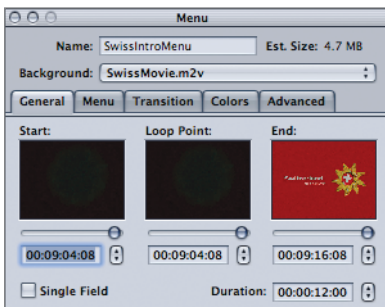
NOTE ► If the movie starts playing, click the Motion button at the bottom-right corner of the Menu Editor to stop it.

- 3 In the Menu Inspector, move the End slider as close as possible to timecode 00:09:16:08.

Use the Up and Down Arrows to move the end slider to the exact frame.

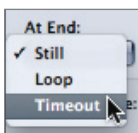


- 4 Select the Start timecode field, and enter *090408* to define the start timecode at 00:09:04:08.



By defining the start and end points, you have reduced the duration of the SwissMovie asset to about 12 seconds. Only this section, along with the associated audio, will be rendered into the menu background when you build your disc.

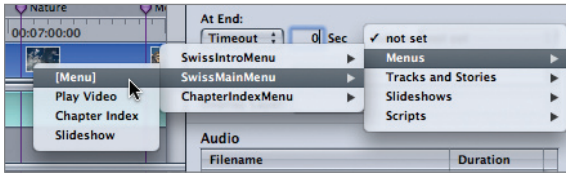
- 5 Choose Timeout from the At End pop-up menu located in the middle of the Menu Inspector.



- 6 Change the Timeout value to 0 Sec.

Your SwissIntroMenu will only play for about 12 seconds and then time out at 0 seconds.

- 7 Choose **Menus > SwissMainMenu > [Menu]** from the Action pop-up menu.



Now your introductory menu will automatically jump to the main menu after it plays.

- 8 In the Outline tab, Control-click **SwissIntroMenu** and choose **Simulate Menu** from the shortcut menu.
- 9 Close the simulator and save your project.