

# Creating a novelty slideshow template

This extract is taken from the Lightroom 4 book and shows how you can go about creating a novelty slideshow template design for use in the Slideshow module.



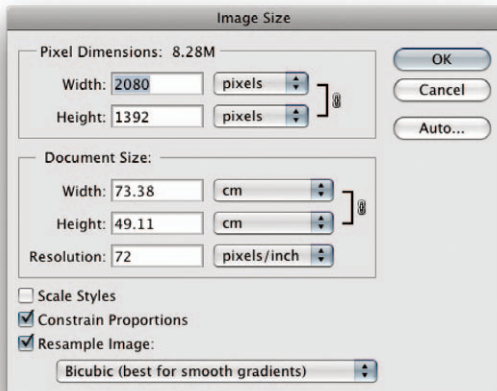
## NOTE

The two images used in the construction of this Slideshow layout can be downloaded from the Lightroom book website.

Downloadable Content:  
[www.thelightroombook.com](http://www.thelightroombook.com)



1. I devised the following steps to illustrate the potential Lightroom has for creating customized slideshow layouts. First of all I used my Photoshop skills to create a cutout image of an old-fashioned television set on top of a table. I won't go into all the details about how I created this object, but I'd like to draw your attention to the screen area in the middle, which although you can't see too well against the checkered transparency pattern, it contained soft highlight reflections (The insert image shows these more clearly against a black background).



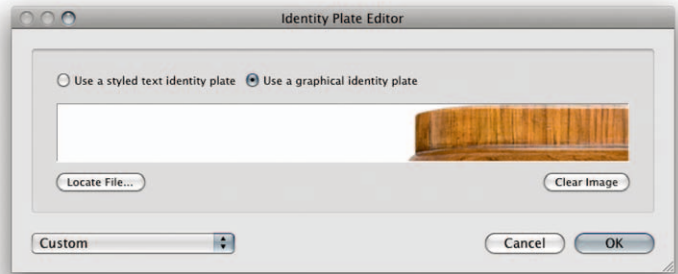
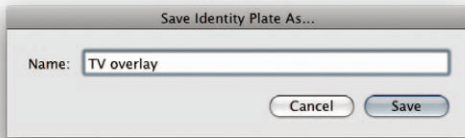
2. I went to the Image menu in Photoshop and used the Image Size dialog to resize the master image to the size shown here. This would be the maximum pixel size needed for slideshow presentations on a 30-inch display.



3. Meanwhile, I selected a backdrop photo in Lightroom, which in this case was a photograph taken of a wallpaper design. I used the Post-Crop Vignetting sliders in the Develop module Effects panel to darken the corners of this photo.



4. In the Slideshow module I dragged the wallpaper photo from the Filmstrip to place it as a background image in the Backdrop panel.



5. To load the foreground image that I had worked on in Photoshop, I clicked on the triangle in the Overlays panel Identity Plate preview (circled in Step 6) and chose Edit... This opened the Identity Plate Editor shown here. I checked the "Use a graphical identity plate" option, clicked the Locate File button, and chose the image I had worked in Photoshop. There was no need to worry about the image graphic exceeding the Preview window. I clicked OK to save this as a new Identity Plate setting.



6. The Identity Plate image appeared as a new overlay where the photo selected in the Filmstrip appeared sandwiched between the backdrop image and the Identity Plate overlay. The next step was to place and scale the Identity Plate image so that it almost filled the whole screen and was centered in the frame.



**7.** I then adjusted the Layout panel guides to position the photo frame so that the height of a landscape photograph just fitted within the top and bottom of the TV screen area. I also set the left and right guides so that any extra narrow landscape photos would still fit the frame height.



**8.** Here is a slide from the finished slideshow in which selected photos were played back via this television screen slideshow template.