

My GoPro® Hero Camera



COVERS

All models of
GoPro HERO,
HERO3,
HERO3+,
and HERO4

GoPro, HERO, the GoPro logo,
and the GoPro Be a Hero logo
are trademarks or registered
trademarks of GoPro, Inc.

que®

Jason R. Rich

FREE SAMPLE CHAPTER



SHARE WITH OTHERS

An abstract graphic featuring flowing, translucent waves of color in shades of yellow, orange, red, pink, purple, and blue, resembling smoke or liquid in motion.

My GoPro® Hero Camera

Jason R. Rich

que®

800 East 96th Street,
Indianapolis, Indiana 46240 USA

My GoPro® Hero Camera

Copyright © 2015 by Pearson Education, Inc.

All rights reserved. No part of this book shall be reproduced, stored in a retrieval system, or transmitted by any means, electronic, mechanical, photocopying, recording, or otherwise, without written permission from the publisher. No patent liability is assumed with respect to the use of the information contained herein. Although every precaution has been taken in the preparation of this book, the publisher and author assume no responsibility for errors or omissions. Nor is any liability assumed for damages resulting from the use of the information contained herein.

ISBN-13: 978-0-7897-5525-4

ISBN-10: 0-7897-5525-4

Library of Congress Control Number: 2015932280

Printed in the United States of America

First Printing: April 2015

Trademarks

All terms mentioned in this book that are known to be trademarks or service marks have been appropriately capitalized. Que Publishing cannot attest to the accuracy of this information. Use of a term in this book should not be regarded as affecting the validity of any trademark or service mark.

GoPro Hero is a registered trademark of GoPro, Inc. This book is not affiliated with or sponsored by GoPro, Inc.

Warning and Disclaimer

Every effort has been made to make this book as complete and as accurate as possible, but no warranty or fitness is implied. The information provided is on an “as is” basis. The author and the publisher shall have neither liability nor responsibility to any person or entity with respect to any loss or damages arising from the information contained in this book.

Special Sales

For information about buying this title in bulk quantities, or for special sales opportunities (which may include electronic versions; custom cover designs; and content particular to your business, training goals, marketing focus, or branding interests), please contact our corporate sales department at corpsales@pearsoned.com or (800) 382-3419.

For government sales inquiries, please contact governmentsales@pearsoned.com.

For questions about sales outside the U.S., please contact international@pearsoned.com.

Editor-in-Chief

Greg Wiegand

Senior Acquisitions Editor

Laura Norman

Development Editor

Todd Brakke

Managing Editor

Kristy Hart

Senior Project Editor

Lori Lyons

Copyeditor

Apostrophe Editing Services

Senior Indexer

Cheryl Lenser

Proofreader

Debbie Williams

Technical Editor

Paul Sihvonen-Binder

Editorial Assistant

Kristen Watterson

Composer

Bronkella Publishing

Graphics Technician

Tammy Graham

Contents at a Glance

Chapter 1	Overview of the GoPro Cameras.....	3
Chapter 2	Getting Started with Your GoPro Camera	27
Chapter 3	Overview of GoPro Camera Housings.....	57
Chapter 4	Overview of GoPro Camera Mounts.....	81
Chapter 5	Must-Have GoPro Camera Accessories	101
Chapter 6	Choosing the Best Memory Cards for Your GoPro Camera.....	119
Chapter 7	Keeping Your Batteries Charged	131
Chapter 8	Shooting High-Resolution Photos	141
Chapter 9	10 Strategies for Taking Professional-Quality Digital Pictures	165
Chapter 10	Shooting HD Video.....	189
Chapter 11	Capturing Sound and Using Artificial Light While Shooting Video	221
Chapter 12	Adjusting the Camera's Setup Menu Options.....	235
Chapter 13	10 Strategies for Shooting Awesome HD Video	251
Chapter 14	Troubleshooting Camera-Related Problems and Overcoming Common Shooting Mistakes.....	271
Chapter 15	Using the GoPro Mobile App	297
Chapter 16	Using the GoPro Studio Software.....	325
Chapter 17	Sharing Your Photos and Videos	353
	Index.....	387

Table of Contents

1	Overview of the GoPro Cameras	3
	Understanding the Skill and Art of Digital Photography	5
	Choosing the Right GoPro Camera for You	6
	What You Should Know About Digital Camera Resolution	7
	Understand the Basics About HD Video Resolution	7
	Comparing GoPro Camera Models	9
	The GoPro Hero Is Ideal for Beginners	13
	The GoPro Hero3+ Is a Full-Featured Camera	14
	The GoPro Hero4 Offers Cutting-Edge Functionality	15
	Using Housings to Protect Your Camera	16
	Taking Better Shots Using Mounts	19
	Making Better Use of Camera Features Using Accessories ..	21
	The GoPro App Has Several Uses	22
	The GoPro Studio Software Offers Professional Video-Editing Tools	24
	Gathering Your GoPro Equipment	25
2	Getting Started with Your GoPro Camera	27
	Overviewing the GoPro Camera's Body	28
	The Front of the Camera	29
	The Back of the Camera	30
	The Right Side of the Camera	31
	The Left Side of the Camera	34
	The Top of the Camera	34
	The Bottom of the Camera	35
	Exploring the LCD Status Screen	36
	Your GoPro Camera's Menu Hierarchy	40
	Status Lights Provide Useful Information About Your Camera	43
	Setting Up the Camera for the First Time	44
	Insert Battery and SD Card	44
	Prepare the Camera	45
	Customize Settings	47

Updating Your Camera's Operating System	50
Update Using the GoPro Mobile App	51
Update the Hero4 Using GoPro Studio Software	52
Updating the Operating System Manually	54

3 Overview of GoPro Camera Housings 57

Inserting and Removing Your Camera from a Housing	59
Remove the Camera	60
Insert the Camera into a Housing	62
Keeping Your Housing Clean	63
Using the Appropriate Backdoor for a Housing	65
Swap the Housing's Backdoor	70
Discovering Your Housing Options	71
Standard Housing	71
Skeleton Housing	72
Dive Housing	74
Blackout Housing	74
The Frame Housing	75
Dual Hero System Housing	77
Third-Party Camera Housings	77

4 Overview of GoPro Camera Mounts 81

Preplan Your Shots and Choose the Best Equipment	82
Attaching the Camera Housing to a Mount	84
Use the Quick Release Buckle and Thumb Screw	85
Use a Quick-Release Anti-Vibration Locking Plug	87
Overview of Popular GoPro Mounts	88
Finding and Purchasing Third-Party Mounts and Accessories	96

5 Must-Have GoPro Camera Accessories 101

Remotely Control Your Camera with the Smart Remote	101
Charge the Smart Remote's Battery	103
Pair the Smart Remote with Your Hero4 Camera	106
Using the Smart Remote with Your Camera	108
Control Your Camera with the Smart Remote	109
Adjusting Settings with the Touch BacPac	111
Give Your Camera a Power Boost with the Battery BacPac	117

6	Choosing the Best Memory Cards for Your GoPro Camera	119
	Picking the Right Memory Card Speed Class	120
	Selecting a Memory Card's Storage Capacity	121
	Shopping for and Using microSD Memory Cards	123
	Insert a Memory Card into Your Camera	124
	Format a microSD Memory Card Using a Hero4	126
	Understanding Memory Card-Related Error Messages	129
7	Keeping Your Batteries Charged	131
	Tracking Battery Life	133
	Saving Money Using Compatible GoPro Batteries	134
	Increasing Battery Life While Shooting	136
	Insert a Battery into Your Hero4	137
8	Shooting High-Resolution Photos	141
	Taking Pictures with Your GoPro	142
	Single shooting mode	144
	Continuous Shooting Mode	145
	Night Shooting Mode	146
	Burst Shooting Mode	147
	Time Lapse Shooting Mode	148
	Night Lapse Shooting Mode	149
	Knowing When to Use the Protune Feature	150
	Adjusting White Balance	151
	Adjusting Color	151
	Adjusting ISO Limit	152
	Adjusting Sharpness	152
	Adjusting EV Comp	153
	Switching Between Shooting Modes	153
	Switch Camera Modes Directly from the Camera	154
	Switch Shooting Modes Using the LCD Touch	
	BacPac Display	157
	Switch Shooting Modes Using the GoPro Smart Remote	159
	Switch Shooting Modes Using the GoPro App	160

10 Strategies for Taking Professional-Quality**Digital Pictures****165**

Preparation Is Essential	166
Choosing an Interesting Subject	167
Shoot Action from a First- or Third-Person Perspective	169
Take Interesting Pictures of People	170
Capture the Perfect Selfie	171
Photographing Animals and Pets	172
Capture a Fast-Moving Subject	172
Take Great Pictures of Your Child's Event	173
Shoot Visually Interesting Objects	174
Take Vivid Underwater Photos	175
Setting Your Camera to the Best Mode for Your Shooting Situation	176
Take Advantage of Burst shooting mode	177
Don't Forget About Your Hero4's Multi-Shot Options	177
When Turning On Protune Can Benefit You	178
Shooting Resolution Considerations	179
Using a Viewfinder with Your Camera When Taking Photos	180
Selecting the Most Appropriate Housing and Mount	181
Paying Attention to Your Primary Light Source	182
Using the Rule of Thirds When Framing Your Shots	183
Choosing a Visually Interesting Shooting Perspective	185
Properly Handling Low-Light Situations	186
Editing Your Digital Photos After They've Been Shot	186

Shooting HD Video**189**

Using Available HD Video Option	190
Shooting Video with Your GoPro	192
Video Shooting Mode	196
Video+Photo Shooting Mode	198
Looping Video Mode	199
Taking Advantage of Hero4's Highlight Tagging	200
Create a Tag from the Smart Remote	201
Create a Tag from the GoPro App	201
Shooting Time Lapse Video	202
Capture Time Lapse Video	203
Time Lapse Video Shooting Strategies	205

Enhancing Video Quality with Protune	205
Adjusting White Balance	207
Adjusting Color	207
Adjusting ISO Limit	207
Adjusting Sharpness	208
Adjusting EV Comp	208
Switching Between Video-Related Shooting Modes	209
Switch Video-Related Shooting Modes Directly from the Camera	210
Switch Video Shooting Modes Using the LCD Touch BacPac Display	213
Switch Between Video Shooting Modes Using the GoPro Smart Remote	215
Switch Shooting Modes Using the GoPro App	215

11 Capturing Sound and Using Artificial Light While Shooting Video 221

Using Your Camera's Built-in Microphone to Record Audio	222
Connecting an External Microphone to Your Camera	225
Choosing a Microphone	226
Adding Sound Effects and Music to Your Video Projects	228
Using External Lighting Options	230
Choosing the Best Continuous Lighting Solution	232

12 Adjusting the Camera's Setup Menu Options 235

Getting Acquainted with the Setup Menu Options	236
Resetting Your Camera	242
Accessing the Setup Menu	243
Access the Setup Menu Directly from the Camera	244
Access the Setup Menu Using the LCD Touch BacPac Display	246
Access the Setup Menu Using the Smart Remote	247
Access the Setup Menu Using the GoPro App	248

13 10 Strategies for Shooting Awesome HD Video 251

Preplanning Is Essential	252
Having the Right Equipment at Your Disposal	253
Gather Your Equipment	254

Choosing the Best Shooting Resolution	256
Selecting the Best Frames Per Second (FPS) Rate	259
Deciding Which Field of View (FOV) Option to Use	259
Deciding the Best Way to Shoot Your Subject	261
Using Lighting to Your Advantage	264
Handling Camera Movement	265
Tagging Your Best Shots as You Shoot	267
Shooting Plenty of Raw Footage	268

Troubleshooting Camera-Related Problems and Overcoming Common Shooting Mistakes 271

Troubleshooting Camera-Related Problems	272
The Camera Won't Turn On	272
The Camera Is On, but Unresponsive	274
The Camera Won't Connect with the GoPro App or Smart Remote	276
Clear Up Lens Fog	278
Reset Your Camera Name and Password	279
The Status Screen Says No SD, Full, or SD ERR	280
The File Repair Icon Appears on the Status Screen	281
The Camera Has Overheated and the Temperature Icon Displays on the Status Screen	281
Water Spots Have Formed on the Housing	282
Video Playback Is Choppy on the Computer	282
Video Doesn't Play Back Properly Using the GoPro App	282
The Camera Is Off, but the Blue Status Lights Are Flashing	283
The Menus on Your Camera Are Different from This Book	283
The Computer Doesn't Recognize Your Connected Camera	284
The Camera Is Physically Damaged	284
Overcoming Common Shooting Problems	286
Your Photos or Videos Are Overexposed	286
Video Playback Is Too Shaky	288
The Camera Mount You're Using Won't Maintain Its Position	288

Low Light Photos or Video Are Blurry or Under Exposed	289
Photos or Videos Have Excessive Fishesye	289
The Colors in Photos or Video Aren't as Vibrant as They Should Be	290
The Memory Card Fills Up Too Fast When I'm Shooting	291
Recover Deleted Photos or Video	291
The Memory Card Is Full, but I Want to Keep Shooting	292
Improve Poor Audio Quality	292
Wind Noise Is Ruining the Audio	293
Seeking Out Creative Inspiration	293

15 Using the GoPro Mobile App 297

Getting Started with the App	298
Install the GoPro App	299
Pair the GoPro App with Your GoPro Hero4	301
Taking Control of Your Camera Using the GoPro App	307
Navigating the App Settings Menu	308
Accessing Your My GoPro Album	309
Transfer Photos or Video from the Memory Card to the GoPro App	310
Controlling Your Camera from the GoPro App	314
Adjusting the Hero4's Settings from the App	316
Optional GoPro Mobile Apps	321
10 – Fast GoPro & DJI Phantom Video Sharing with Music	321
Prizmia for GoPro	321
Lab for GoPro	322

16 Using the GoPro Studio Software 325

Understanding the Video Editor's Role	327
Getting Started	328
Download GoPro Studio	330
Run GoPro Studio	331
Getting to Know GoPro Studio's Layout	333

Transferring Raw Video to Your Computer	335
Transfer Content to Your Computer	335
Beginning the Editing Process	337
Select and Convert Clips	338
Edit Your Video	340
What's Possible During the Editing Process	343
Enhancing Flawed Video Footage	345
Considering Sound	346
Saving, Exporting, and Sharing Your Video Projects	346
Video Editing Tips to Make Your Videos Better	347
Considering Other Editing Software Options	349

17**Sharing Your Photos and Videos 353**

Sharing Photos via Email	355
Sharing Photos Using a Cloud-Based Service	357
Sharing Photos and Videos Using Social Media	359
Sharing with Facebook	361
Upload A Photo To Facebook	362
Sharing with Twitter and Instagram	364
Tweet Photos from the Twitter App	366
Tweet Photos from the Photos App	368
Publish A Photo On Instagram From Your iPhone/iPad	371
Publishing Videos on YouTube	375
Upload and Publish a Video on YouTube	377
Sharing Photos and Videos via the GoPro Channel	380
Access the GoPro Channel	381
Sharing to the GoPro Channel	382
Upload to the GoPro Channel	382
Other Ways to Showcase Your Photos and Videos	384
Ways to Showcase Photos	384
Ways to Showcase Video	385
That's a Wrap!	386

Index**387**

About the Author

Jason R. Rich is an accomplished author, journalist, and photographer, as well as an avid traveler. Some of his recently published digital photography-related books include *iPad and iPhone Digital Photography Tips and Tricks* (Que) and *How to Do Everything Digital Photography* (McGraw-Hill). For Que, he also created the *Using Your GoPro Hero3+: Learn To Shoot Better Photos and Videos* video course, and has written numerous other book about the iPhone, iPad, interactive entertainment, and the Internet.

As a photographer, his work continues to appear in conjunction with his articles published in major daily newspapers, national magazines, and online, as well as within his various books. He also works with professional actors, models, and recording artists developing their portfolios and taking their headshots, and continues to pursue travel and animal photography.

Through his work as an enrichment lecturer, he often offers digital photography workshops and classes aboard cruise ships operated by Royal Caribbean, Princess Cruises Lines, and Celebrity Cruise Lines, as well as through Adult Education programs in the New England area. Please follow Jason R. Rich at www.jasonrich.com, on Twitter (@JasonRich7), or on Instagram (@JasonRich7).

Dedication

This book is dedicated to my family and friends, including my niece, Natalie, and my Yorkshire Terrier, Rusty, who is always by my side as I'm writing.

Acknowledgments

Thanks once again to Laura Norman and Greg Wiegand at Pearson for inviting me to work on this project and for their ongoing support. I'd also like to thank Todd Brakke and Kristen Watterson for their assistance, and offer my gratitude to everyone else at Pearson whose talents helped to make this book a reality.

A sincere thank you also goes out to the folks at GoPro for creating such awesome cameras, and to the various third-party companies that have developed innovative mounts and accessories that make these camera so much more versatile.

Finally, thanks to you, the newest members of the global GoPro community, who are about to embark on a fun and exciting photography and videography adventure, as you learn how to fully utilize your GoPro camera.

We Want to Hear from You!

As the reader of this book, *you* are our most important critic and commentator. We value your opinion and want to know what we're doing right, what we could do better, what areas you'd like to see us publish in, and any other words of wisdom you're willing to pass our way.

We welcome your comments. You can email or write to let us know what you did or didn't like about this book—as well as what we can do to make our books better.

Please note that we cannot help you with technical problems related to the topic of this book.

When you write, please be sure to include this book's title and author as well as your name and email address. We will carefully review your comments and share them with the author and editors who worked on the book.

Email: feedback@quepublishing.com

Mail: Que Publishing
ATTN: Reader Feedback
800 East 96th Street
Indianapolis, IN 46240 USA

Reader Services

Visit our website and register this book at quepublishing.com/register for convenient access to any updates, downloads, or errata that might be available for this book.

This page intentionally left blank

This page intentionally left blank

Discover how to shoot high-resolution digital photos using your GoPro camera, and learn how and when to use the camera's Photo, Continuous, Night, Burst, Time Lapse, and Night Lapse shooting modes.



In this chapter, you learn about the features and functions built into the GoPro Hero4 camera (as well as some other GoPro camera models). Topics include the following:

- Learning how and when to use each Photo or Multi-Photo-related feature built into your GoPro camera model
- Learning the GoPro's menu structure so that you can quickly and accurately switch between shooting modes
- Navigating through the picture-taking menus using the camera, LCD Touch BacPac, Smart Remote, or GoPro App

8

Shooting High-Resolution Photos

Earlier versions of the GoPro cameras were designed mainly for shooting HD video. However, the more recently released camera models, including the Hero3+ and Hero4, have a variety of built-in features and functions so that you can use the cameras to shoot high-resolution digital photos that fully utilize the camera's wide angle lens.

Because of its small size and durability (when used with an optional housing), the GoPro cameras also enable you to take high-resolution and extremely detailed photos in situations in which other point-and-shoot or digital SLR cameras aren't designed to go.

>>> *Go Further*

THE SKILL OF TAKING DIGITAL PICTURES

You can use all current GoPro camera models to take digital photos. However, each camera model offers a different selection of picture-taking features and functions, and you can shoot at different resolutions.

This chapter focuses on how to set up and use each of the GoPro Hero4's picture-taking features and functions. Some, but not all these features and functions are also built in to the GoPro Hero, Hero3, and Hero3+.

After you understand picture-taking features and functions and how to adjust your camera to use them (the “skill” aspect of digital photography), the next chapter can help you put these tools to work as you incorporate the creative aspects of digital photography and begin actually taking pictures. You can incorporate the “art form” aspect of digital photography into your picture taking.

Taking Pictures with Your GoPro

Each GoPro camera model offers a different selection of picture-taking features and functions, which you can use to shoot at different resolutions.

Because the top-of-the-line Hero4 Black includes all the picture-taking features and functions covered in this chapter, this is the camera model that is primarily discussed. However, Table 8.1 indicates other GoPro camera models that offer specific picture-taking features and functions.

Each of the GoPro cameras has several distinct shooting modes, which you can use to take digital photos (instead of shooting video). Each mode is designed to be used in a different shooting situation.

After you select a particular shooting mode, you can access the Settings menu to further fine-tune the camera settings you want to use.

First, take a closer look at each of the GoPro Hero4 Black's Photo and Multi-Shot-related shooting modes, as well as the options that can be adjusted when using each of them.

Table 8.1: Discover the Picture-Taking Features of Your GoPro Camera

Picture-Taking Feature	GoPro Hero	GoPro Hero3	GoPro Hero3+	GoPro Hero4 Silver	GoPro Hero4 Black
Maximum Resolution for Digital Photos	5MP	5MP	10MP	12MP	12MP
Burst Rates (Frames Per Second)	10/2	3/1	3/1, 5/1, 10/1	30/1, 30/2, 30/3, 10/1, 10/2, 10/3, 5/1, 3/1	30/6, 30/1, 30/2, 30/3, 10/1, 10/2, 10/3, 5/1, 3/1
Time Lapse Intervals	0.5 seconds	0.5, 1, 2, 5, 10, 30, or 60 second	0.5, 1, 2, 5, 10, 30 or 60 seconds	0.5, 1,2,5, 10, 30 or 60 seconds	0.5, 1,2, 5, 10, 30 or 60 seconds
Continuous Photo Rates (Frames per Second)	N/A	N/A	N/A	10/1, 5/1, 3/1	10/5, 5/1, 3/1
Wireless Mode & GoPro App Compatibility	N/A	Wi-Fi	Wi-Fi	Wi-Fi + Bluetooth	Wi-Fi + Bluetooth
Protune for Photos	N/A	N/A	N/A	Yes	Yes
Night Photo Mode	N/A	N/A	N/A	Yes	Yes
Night Lapse Mode	N/A	N/A	N/A	Yes	Yes
Simultaneous Video & Photo	N/A	N/A	N/A	Manual control, or photo every 5, 10, 30, or 60 seconds while shooting video	Manual control, or photo every 5, 10, 30, or 60 seconds while shooting video

Again, if you use a different GoPro camera model, not all these shooting modes or options are available, and the options that display (and in what order) within specific menus can vary.

Shoot Video and Photos Simultaneously

Some of the GoPro cameras, including the Hero4, enable you to shoot HD video and simultaneously take digital photos. How to utilize this Video+Photo feature is explained in Chapter 10, “Shooting HD Video.” How to adjust the camera’s Settings menu options is covered in Chapter 12, “Adjusting the Camera’s Setup Menu Options.”

Single Shooting Mode

If you plan to use your GoPro camera like a traditional point-and-shoot digital camera, the shooting mode you’ll probably use most of the time (especially when shooting in well-lit areas) is Single shooting mode.

When you select this option, your GoPro camera can capture one image at a time, each time you press the camera’s Shutter button. Ideally, you want to use this shooting mode with a viewfinder, so you can properly frame your shots and see exactly what you’re shooting.

After you select the Single shooting mode, when you access its Settings menu, you can adjust the following three options:

- **Megapixels:** This option enables you to alter the shooting resolution you use to take digital images. The Hero4 Black, for example, enables you to choose between 5MP Medium Field of View, 7MP Medium Field of View, 7MP Wide Field of View, and 12MP Wide Field of View. The resolution options offered by other GoPro camera models vary.

A Wider Field of View

When you choose a wide field of view, the camera captures more content within each frame, particularly on the right and left sides. This is ideal for first-person shots or landscape/cityscape shots.

- **Spot Meter:** Use this feature when you position the camera in a low-light area, but want to take pictures of a subject that’s well lit. When turned on, the Spot Meter icon appears within the Status Screen of the camera, Smart Remote, GoPro App, or LCD Touch BacPac display. Examples related to when to best utilize this option are covered in the next chapter.

- **Protune:** Depending on your shooting situation, if you want to take manual control over camera settings that the camera normally adjusts, turn on the Protune feature. You can then manually adjust options related to White Balance, Color, ISO Limit, Sharpness, and EV Comp, as they relate specifically to the Single shooting mode. Information about how to use each of these options is covered in the later section “Knowing When To Use the Protune Feature.”

Leave Protune Turned Off

In most situations, it's easier to leave Protune turned off and rely on the camera to automatically adjust these settings as you take pictures.

Continuous Shooting Mode

Upon activating the Continuous shooting mode, each time you press and hold down the Shutter button, you can take multiple images in quick succession. From the Settings menu, you can adjust how many photos to take per second when this feature is active.

Hero4 enables you to choose between capturing 3, 5, or 10 images per second when you press and hold down the Shutter button. This feature is ideal if you take pictures of a fast moving subject or need to capture a time-sensitive action (also see the next chapter).

Although you'll end up with many similar shots using this feature, you can always delete the unwanted shots. However, images you take even a fraction of a second apart can be vastly different when you compare them.

After you select the Continuous shooting mode, when you access its Settings menu, you can adjust the following four options:

- **Continuous Rate:** Enables you to determine how many images you can capture per second when you press and hold down the Shutter button (instead of pressing and releasing it to take a single photo when using the camera's Single shooting mode).
- **Megapixels:** Adjust the camera's shooting resolution and corresponding Field of View, based on which resolution you select.
- **Spot Meter:** Turn on or off the Spot Meter feature as it pertains exclusively to the Continuous shooting mode option.

- **Protune:** Turn on or off the Protune feature, and then adjust specific Protune-related settings, as pertains exclusively to the Continuous shooting mode option.

Night Shooting Mode

Anytime you take photos in low-light situations, such as outside at dusk, dawn, or nighttime, or indoors when the lights are dim, turn on the Night shooting mode. When turned on, your camera can capture more light and detail, with natural-looking colors (based on the shooting situation).

The GoPro cameras do not have a built-in flash, so unless you use a continuous and artificial light source when taking pictures, you need to rely on the present ambient light in your shooting area. Chapter 11, “Capturing Sound and Using Artificial Light While Shooting Video,” discusses some of your artificial lighting options when shooting video, but you can use the same strategies and lighting products in many picture-taking situations.

When using artificial light, be careful not to drown out the natural lighting in the area where you take pictures, or the colors within your images could become faded, and your intended subjects could look over saturated with light (refer to Chapter 11).

Your GoPro camera is designed to take good-quality photos in many low-light situations however, without having to rely on additional lighting. When taking pictures in low-light situations, you must hold the camera still. Thus, you can typically achieve clearer and more in-focus results if you use a tripod or mount with the camera, and then control it remotely using the Smart Remote or GoPro App. Even pressing the Shutter button on the camera gently can cause unwanted camera movement.

Find more information about appropriate situations in which you can use this shooting mode in the next chapter. As a general rule, however, if you take pictures in low light or at night, turn on Night mode.

When Both the Camera and Your Subject Are in Low Light

Use the Night shooting mode when the camera and your subject are within an area with dim or minimal lighting. If the camera is in a low light area but the subject is well lit, instead of using Night mode, take advantage of the camera's Spot Meter feature with the Single shooting mode.

After selecting the Night shooting mode, when you access its Settings menu, you can adjust the following four options:

- **Shutter:** Each time you take a photo, you can determine how long the camera's shutter remains open. This impacts how much light the camera captures and uses for each shot. The Hero4 Black, for example, enables you to select between Auto, 2, 5, 10, 15, 20, or 30 seconds. When in doubt, use the Auto option. If you choose one of the other options, you need to figure out how much light the camera needs to capture your subject. The longer the shutter remains open, the more sensitive the camera becomes to any movement of the camera or your subject. This movement can result in blurs within your image. Or if the shutter is left open for too long, the shot might be overexposed.
- **Megapixels:** Adjust the camera's shooting resolution and corresponding Field of View based on which resolution you select.
- **Spot Meter:** Turn on or off the Spot Meter feature that pertains exclusively to the Night shooting mode option.
- **Protune:** Turn on or off the Protune feature, and then adjust specific Protune-related settings that pertain exclusively to the Night shooting mode option.

Burst Shooting Mode

Burst shooting mode works like Continuous shooting mode, but gives you more options for how many images are captured each time you press and hold down the Shutter button. Like Continuous shooting mode, Burst mode is ideal for taking pictures of fast-moving subjects or when you need precision timing to properly photograph (such as sporting events).

Using the Hero4, for example, you can set up the Burst shooting mode to capture 3, 5, or 10 images per second, 10 images every 2 seconds, 10 images every 3 seconds, 30 images per second, 30 images every 2 seconds, or 30 images every 3 seconds when you press the Shutter button and hold it down.

After you select Burst shooting mode, when you access its Settings menu, you can adjust the following four options:

- **Rate:** Select how many shots to capture per second when you press and hold down the Shutter button.

- **Megapixels:** Adjust the camera's shooting resolution and corresponding Field of View based on which resolution you select.
- **Spot Meter:** Turn on or off the Spot Meter feature that pertains exclusively to the Burst shooting mode option.
- **Protune:** Turn on or off the Protune feature, and then adjust specific Protune-related settings that pertain exclusively to the Burst shooting mode option.

Time Lapse Shooting Mode

Using this feature, when you press the Shutter button once, the camera automatically continues snapping photos at a predetermined time interval until you press the Shutter button a second time to stop the process. This feature is best used when the camera is securely attached to a tripod or mount, so that the camera does not move or shake; therefore, only the movement of your subject is captured in each time-lapsed photo.

The Hero4, for example, enables you to adjust the time between shots to be 0.5, 1, 2, 5, 10, 30, or 60 seconds. If you adjust the Interval option to be 10 seconds and then press the Shutter button, the camera snaps one photo every 10 seconds until you press the Shutter button again.

When you select the Time Lapse shooting mode and access its Settings menu, you can adjust the following four options:

- **Interval:** Determine the precise time interval that the camera automatically takes photos after you press the Shutter button.
- **Megapixels:** Adjust the camera's shooting resolution and corresponding Field of View based on which resolution you select.
- **Spot Meter:** Turn on or off the Spot Meter feature that pertains exclusively to the Time Lapse shooting mode option.
- **Protune:** Turn on or off the Protune feature, and then adjust specific Protune-related settings that pertain exclusively to the Time Lapse shooting mode option.

Night Lapse Shooting Mode

The Night Lapse shooting mode works the same as the Time Lapse shooting mode and you can use it in low-light situations (such as at night). Just like when using Night mode, the camera is extremely susceptible to movement or shaking, so you must use the camera with a tripod or mount to achieve the best results.

When you select the Night Lapse shooting mode and access its Settings menu, you can adjust the following five options:

- **Shutter:** Enables you to determine how long the camera's shutter remains open each time you take a photo. (See "Night Shooting Mode," earlier in this chapter.)
- **Interval:** Determines the precise time interval at which the camera automatically takes photos when you press the Shutter button. (See the previous section, "Time Lapse Shooting Mode.")
- **Megapixels:** Adjust the camera's shooting resolution and corresponding Field of View based on which resolution you select.
- **Spot Meter:** Turn on or off the Spot Meter feature that pertains exclusively to the Night Lapse shooting mode option.
- **Protune:** Turn on or off the Protune feature, and then adjust specific Protune-related settings that pertain exclusively to the Night Lapse shooting mode option.

Consider Battery Life When Using Time Lapse or Night Lapse

If you plan to take photos over an extended period of time using the Time Lapse or Night Lapse feature, be sure to start with a fully charged battery within the camera. How long the camera can continue taking pictures depends on how long the battery lasts.

Choose a longer time interval, such as every 5 minutes, if you plan to shoot over a period of several hours. This allows the battery to last longer because fewer photos will be taken, compared to if you set this feature to snap a photo every 10 seconds.

Knowing When to Use the Protune Feature

The Protune (PT) feature is designed for more advanced GoPro users. It enables you to have greater manual control over specific picture-taking settings. Originally, this option was available only when shooting HD video, but it is also now available when shooting digital photos if you use one of the more powerful GoPro camera models, such as the Hero4.

Using Protune, you can capture higher quality results because the camera utilizes less data compression on your images, plus it captures natural colors within your shots. These digital image files are then more compatible with higher-end photo editing software packages, which means you can take full advantage of the more advanced photo editing tools built in to software, such as Photoshop CC (Photoshop Creative Cloud) to digitally edit and enhance your images.

It's Not All Good

Protune Negatively Impacts Battery Life

With the Protune featured turned on, your camera requires additional power to function and take pictures, reducing battery life. The file sizes associated with your Protune images will also be larger, so they'll take up more space within your camera's memory card.

Regardless of which picture shooting mode you select, from that mode's Settings menu, you can turn on or off the Protune feature. When turned on, five additional menu options are available, and each is adjustable for that particular shooting mode. You can set the Protune-related settings differently for each shooting mode.

The adjustable Protune options include

- White Balance
- Color
- ISO Limit
- Sharpness
- EV Comp (Exposure Value Compensation)

When you turn off Protune, the camera automatically adjusts each of these settings, allowing the camera to serve more like a point-and-shoot digital camera set to Auto mode. This requires less decision making and tinkering with camera settings prior to shooting.

Adjusting White Balance

The White Balance setting enables the camera to adjust all the colors and tones displayed within an image based on what the camera perceives to be the color white in your shots.

When you set this option to Auto (which is the default), the camera automatically analyzes each shot as it's being taken and adjusts the color tone based on the conditions it senses.

- If you take photos in an area with natural, warm light, such as incandescent lighting (indoors), or during a sunrise or sunset, consider selecting the 3000K White Balance option to capture more authentic colors in your shots.
- If you shoot in areas lit by fluorescent lighting or in average daylight, select the 5500K White Balance option.
- When shooting in cool lighting (such as when outside in overcast conditions), use the 6500K White Balance option.

Hero4 Options Pertaining to White Balance

For picture taking, the available White Balance options include Auto, 3000K, 5500K, 6500K, and Native. If you plan to use higher-end photo editing software that offers White Balance controls to later edit or enhance your images, select the camera's Native White Balance option when taking pictures.

Adjusting Color

The Adjusting Color option enables you to manually select the color profile used by the camera when taking pictures. The default GoPro Color option uses the same color profile when the Protune feature is turned off. When you select the Flat option, this enables you to more easily edit the color in photos later using photo editing software to showcase truly natural or authentic-looking colors within an image.

Hero4 Options Pertaining to Color

For picture taking, the available Color options include GoPro Color or Flat. Choosing the Flat option allows the camera to capture more detail in shadows and highlights.

Adjusting ISO Limit

Use the Adjusting ISO Limit setting to manage the camera's sensitivity to light, especially when shooting in low-light situations. Based on which option you select, you can manage the brightness of an image and somewhat control the unwanted graininess (or noise) captured within an image by the camera due to poor lighting.

To achieve a brighter image when shooting in low light, select the default 800 ISO Limit option. The images, however, showcase more noise in your shots, which takes away from the detail, image sharpness, and vibrancy of color.

The 400 ISO Limit option results in a slightly darker image (when shooting in low light), but the image contains less noise than with the 800 ISO Limit option selected. As a result, images contain a bit more detail and sharpness.

If you shoot indoors with decent (but not bright) lighting, choose the 200 ISO Limit option. When shooting outdoors in daylight, the ISO 100 Limit option offers the least amount of image noise, resulting in a sharper, brighter, and more vibrant image.

Hero4 Options Pertaining to ISO Limit

For picture taking, the available ISO Limit options include 100, 200, 400, or 800.

Adjusting Sharpness

When manually adjusting an image's Sharpness while shooting, the Protune option for the various digital photo-related shooting modes offers three options: High (which is the default setting), Medium, and Low.

Choose the High setting to achieve ultra-sharp image quality in your photos. Choose the Medium setting to capture moderately sharp photos, or use the Low option to capture softer photos.

Hero4 Options Pertaining to Sharpness

For picture taking, the available Sharpness options include Low, Medium, or High. Most photo editing software applications (and some photo editing mobile apps) offer a tool for manually adjusting or fixing image Sharpness after the image is shot. Thus, you can skip tinkering with this camera feature while shooting and then adjust an image's Sharpness, if needed, while editing.

Adjusting EV Comp

Exposure Value Compensation (EV Comp) impacts the brightness of the photos as they're being taken. If you shoot in areas with contrasting lighting conditions, adjusting this setting can help you capture better quality images

Hero4 Options Pertaining to EV Comp

For picture taking, the available EV Comp options range from -2.0 to 2.0, with the default option being 0.0.

Reset the Protune Options

By selecting the Reset option related to a specific Protune menu, you can reset all the related options to their default settings. However, these changes apply only to the Protune options for that specific shooting mode.

Switching Between Shooting Modes

When you turn on the camera, you can switch between four shooting modes and then adjust shooting mode-specific settings, including

- From the camera directly
- Using the LCD Touch BacPac display
- Using the Smart Remote
- Using the GoPro App that runs on your smartphone or tablet

After you select a shooting mode and adjust its options, these selections remain active until you manually change them, or until you turn off the GoPro camera. Then, when you turn the camera on again, its Default shooting mode (and related settings) is automatically activated.

You can select the Default shooting mode from the camera's main Settings menu. See Chapter 12, "Adjusting the Camera's Setup Menu Options," for more information on how to set or change this option.

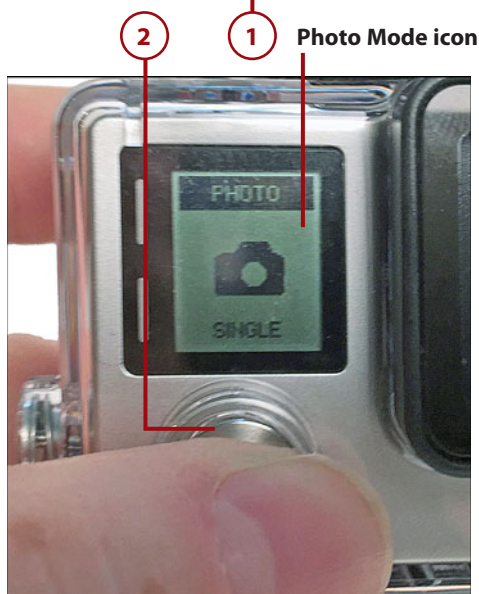
Switch Camera Modes Directly from the Camera

To switch between shooting modes and then adjust shooting mode-specific settings before taking pictures using the Hero4, follow these steps:

1. Turn on the camera by pressing and holding the Power/Mode button for approximately 2 seconds.
2. While looking at the camera's Status Screen, repeatedly press the Power/Mode button until the icon for either the Photo or Multi-Shot mode displays.

Photo Versus Multi-Shot Menu Options

The Single, Continuous, and Night shooting modes are available as primary shooting mode options found within the camera's Photo menu. The Burst, Time Lapse, and Night Lapse shooting modes are available as options from the camera's Multi-Shot menu.



3. To select between Single, Continuous, or Night shooting mode, when the Photo icon appears on the Status Screen, press the Settings/Tag button on the side of the camera to access the Photos submenu.

Multi-Shot Settings

To instead select the Burst, Time Lapse, or Night Lapse shooting mode, when the Multi-Shot icon appears on the Status Screen, press the Settings/Tag button on the side of the Hero4 camera to access the Multi-Shot submenu.

4. The first option listed within the Mode submenu that displays on the Status Screen enables you to toggle between shooting modes. If you select the Photo mode, repeatedly press the Shutter/Select button to switch between Single, Continuous, or Night mode until your wanted option displays. If you select the Multi-Shot mode, repeatedly press the Shutter/Select button to switch between the Burst, Time Lapse, and Night Lapse modes until your wanted option displays.



Single shooting mode

5. To select and activate the displayed shooting mode option, press the Settings/Tag button.
6. At this point, you can begin taking photos using the default (or preset) settings related to that shooting mode. Or from the Mode submenu that displays on the Status Screen, press the Power/Mode button to highlight, select, and then adjust one or more shooting mode-specific settings.
7. Press the Shutter/Select button to select the highlighted option. Each time you press the Shutter/Select button, you toggle between available menu options. For example, if you select the Single shooting mode, select the MP option to adjust the Megapixel Resolution, and then press the Shutter/Select button repeatedly to toggle between 12MP Wide, 7MP Wide, 7MP Medium, or 5MP Medium.
8. When the desired settings-related option displays, press the Settings/Tab button to select it. Repeat steps 7 and 8 for each shooting mode-specific setting you want to alter prior to taking pictures.

**Megapixel (MP)
submenu selected**

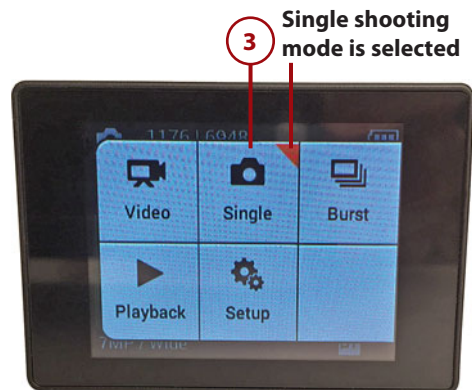
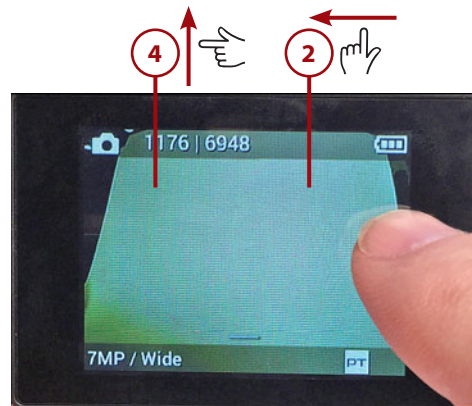
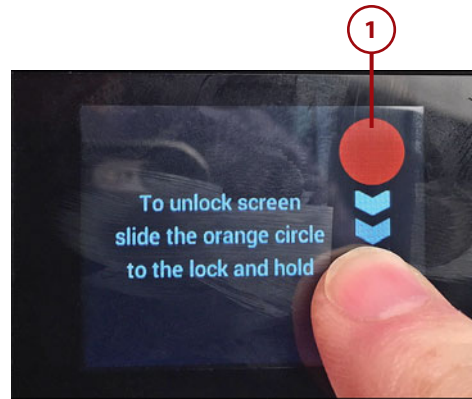


**Megapixel option
changed to 7MP wide**

Switch Shooting Modes Using the LCD Touch BacPac Display

To select a specific shooting mode and adjust that shooting mode's settings using the LCD Touch BacPac, ensure the BacPac is properly attached to the camera, that it is turned on, and follow these steps:

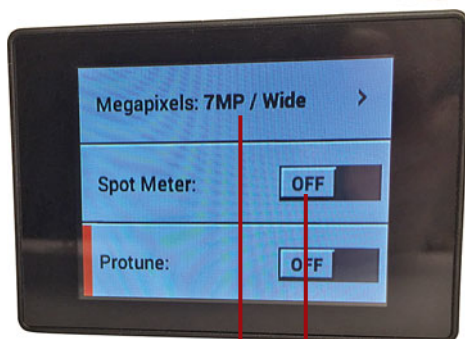
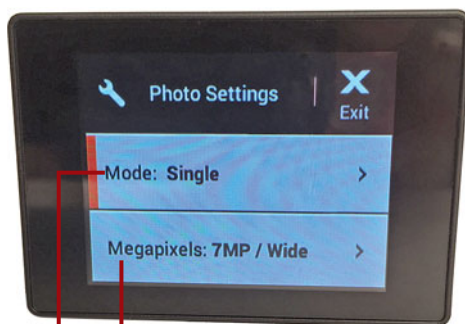
1. To access the camera's menu, tap the display and then unlock it by sliding down the orange circle.
2. When using the Hero4, place your finger on the right side of the display and swipe to the left to access the camera's main menu. (Alternatively, or when using a different GoPro camera model, press the Settings/Tab button or the Wi-Fi button on the side of the camera to access the menu.)
3. Tap the shooting mode you want to use. The currently selected and active shooting mode displays a red triangle in the top-right corner of the icon. You are automatically returned to the main viewfinder screen.
4. Place your finger at the bottom center of the touch display, and this time swipe upward. Using the Hero4, this reveals the Settings menu specifically for the selected and active shooting mode.



Simple Touches

As you already know, accessing the camera's menus and adjusting the various settings is much easier when using the LCD Touch BacPac display accessory. In addition to the menus being straightforward, because more information can display, you can use your finger to tap or swipe (using a Hero4) on the screen to access and select menu options.

5. From the Settings menu, if you previously selected the Photo mode, tap the Mode option to switch between Single, Continuous, and Night. If you previously selected the Multi-Shot option, tap the Mode option to switch between Burst, Time Lapse, or Night Lapse.
6. When the Mode submenu displays, tap the desired shooting mode. You may need to swipe your finger upward on the screen to first scroll through the menu options.
7. Tap the Megapixels option.
8. Some menus have a virtual on/off switch. Slide the switch left or right to toggle it on or off.
9. Some modes, like this one, have submenus for the mode. In this case, tap the option you want to alter. Another submenu with options specific to that feature or function appears. Again, tap your desired option to select it. Repeat Steps 8 and 9 until all the settings related to the selected shooting mode have been adjusted to meet your needs.
10. Tap the Exit (X) icon in the top-right corner of the display to save your changes and return to the viewfinder screen. You can now begin taking pictures.



Switch Shooting Modes Using the GoPro Smart Remote

The information displayed on the Status Screen of the Smart Remote (or Wi-Fi Remote) is identical to what displays on the Status Screen of the camera. So, if you want to use the Smart Remote to remotely control your camera, first follow the directions offered in Chapter 5, “Must Have GoPro Camera Accessories,” for pairing and activating the Smart Remote.

Then, refer to the “Switch Camera Modes Directly from the Camera” section earlier in this chapter to determine which buttons to press on the Smart Remote (instead of on the camera). To refresh your memory, the buttons on the Smart Remote are labeled here.



Switch Shooting Modes Using the GoPro App

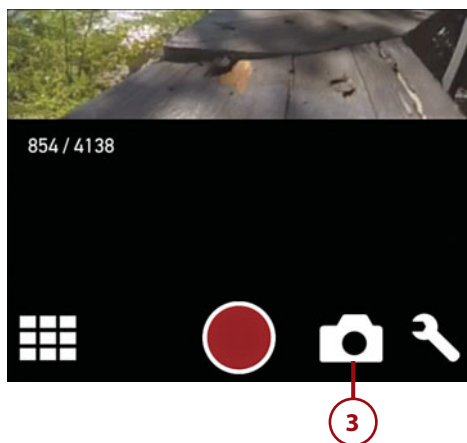
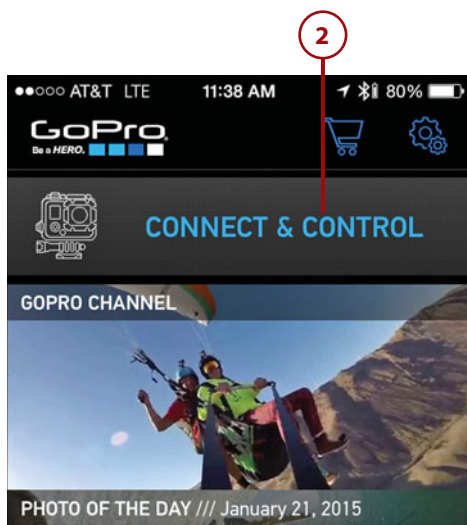
Due to the larger screen size and more straightforward menus, many GoPro camera users find that using the GoPro App on their smartphone or tablet to remotely set up and control the camera offers the easiest option. With the camera on and wireless enabled, follow these steps to select and activate a specific shooting mode, and then adjust the settings related to the selected shooting mode:

1. From your smartphone or tablet, access the Wi-Fi Settings feature and connect to the wireless network that your camera has created (not pictured). This is typically done from your mobile device's main Settings menu. On the iPhone or iPad, for example, launch Settings, and then tap the Wi-Fi option.

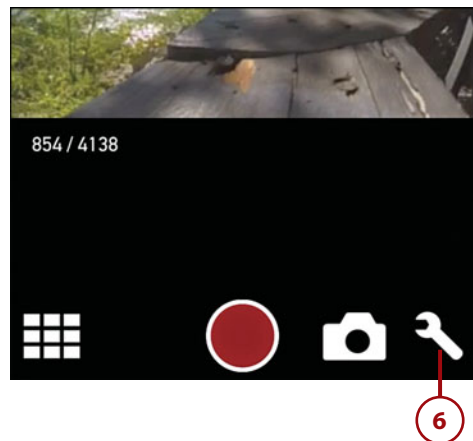
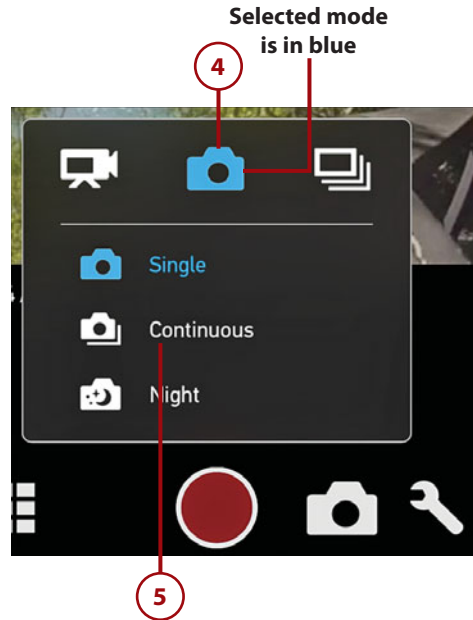
Pairing the App

To follow these steps, your camera and app must already be paired. Follow the directions in Chapter 15, "Using the GoPro Mobile App," to initially pair your smartphone or tablet with your camera.

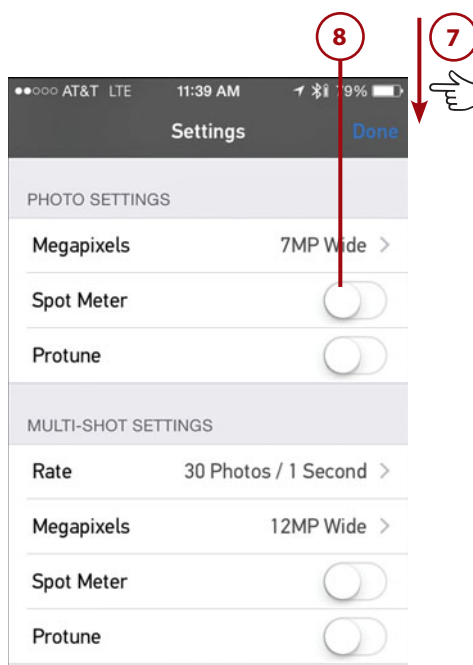
2. Launch the GoPro App on your mobile device, and tap the Connect & Control option.
3. Tap the shooting mode icon that's to the right of the red Shutter button to select a shooting mode.



4. Tap the Video, Photo, or Multi-Shot icon to select one of these three shooting modes and reveal its respective submenu. The selected option appears in blue.
5. After tapping the Photo icon, tap the Single, Continuous, or Night option, or after tapping the Multi-Shot icon, tap the Burst, Time Lapse, or Night Lapse option to select it.
6. After you select a specific shooting mode (Single, Continuous, Night, Burst, Time Lapse, or Night Lapse), tap the wrench-shaped Settings icon to adjust the available settings for the shooting mode you just selected.



7. From the Settings menu, if you select the Single, Continuous, or Night shooting mode, scroll down to the options listed under the Photo Settings heading. If you select the Burst, Time Lapse, or Night Lapse mode, scroll down to the options listed below the Multi-Shot Settings heading.
8. Tap an option listed within the Settings menu to adjust that particular feature, such as Spot Meter. In some cases, a virtual switch displays to turn on or off a setting. Repeat this process until you've adjusted all the wanted shooting mode-specific settings.



>>>Go Further

THE PROTUNE SUBMENU

After you turn on the virtual switch associated with the Protune option, with any of the shooting modes when using a Hero4, additional Protune-related menu options display on the Settings screen of the GoPro App.

As detailed in the earlier section, “Knowing When To Use the Protune Feature,” Protune enables you to manually and separately adjust settings related to White Balance, Color, ISO Limit, Sharpness, and EV Comp for each specific shooting mode.

This page intentionally left blank

Index

Symbols

2.7K resolution, 258
2.7K 4:3 resolution, 258
2.7K Superview resolution, 258
3D Sync Cable, 268
3-D video, recording, 268
3.5mm Mic Adapter, 35, 221, 224-225, 256
4K resolution, 9, 258
4K Superview resolution, 258
10 – Fast GoPro & DJI Phantom Video Sharing with Music app, 321
123RF music library, 229
720p resolution, 257
720p Superview resolution, 257
960p shooting resolution, 257
1080p resolution, 257-260
1080p Superview resolution, 258-260
1440p resolution, 258

A

accessing

Facebook, 360
GoPro Channel, 381
GoPro online store, 320
My GoPro Album with GoPro Mobile App, 309-310, 320
Setup menu, 243-249
 directly from camera, 244-245
 from GoPro Mobile App, 248-249
 with LCD Touch BacPac, 246-247
 from Smart Remote, 247

accessories

3.5mm Mic Adapter, 35, 221, 224-225
Anti-Fog Inserts, 278
Anti-Vibration Locking Plug, 252
Audio-Technica ATR-3350 Lavalier Omnidirectional Condenser Microphone, 228
backdoors, 67

batteries. *See* batteries

Battery BacPac, 117

Hero Port, 30-31

initial camera setup, 45

overheated camera, 193

buying, 6

in bundles, 12

explained, 21-22

extension poles for selfies, 171

external microphone, 35, 293

filters for underwater photos, 176

GoPro Dual Hero System, 268

GoPro Hero HD Camera Video Lighting Set, 230

GoPro mobile app, 22-24

GoPro Studio software, 24

handles and grips, 263

LCD Touch BacPac, 33, 111-116

accessing Setup menu, 246-247

attaching to camera, 113

Auto Low Light option, 195

backdoors, 116

Battery BacPac versus, 117

finger swipes, 115

Hero Port, 30-31

initial camera setup, 45

On Screen Display (OSD) option, 238

overheated camera, 193

pairing GoPro Mobile App with camera, 304

preparation for recording video, 254

resetting camera, 242

Rule of Thirds, 183

Setup menu options, 242

status screen information, 38-39

switching shooting modes, 157-158, 213-215

turning on/off, 114

turning on Protune option, 206

unlocking touchscreen, 114

as viewfinder, 180

viewing photos/videos, 116

when to use, 116

Lume Cube Video Light, 232

memory cards. *See* memory cards

Micro-HDMI cable, 33

MicW iGoMic Stereo Microphone, 227

Mini USB Composite cable, 33

Movo GM100 Lavalier Lapel Clip-on Omnidirectional Condenser Microphone, 228

Polar Pro Promic, 226

preparation for recording video, 256

Qudos Action Waterproof Video Light, 230

for recharging batteries, 35

Sena Bluetooth Audio Pack, 227-228

Smart Remote, 101-103

accessing Setup menu, 247

Attachment Key, 105

charging battery, 103-105

controlling camera, 109-111

GoPro Mobile App versus, 298-299

initial camera setup, 46, 49

locating camera with, 240

pairing, 106-108, 279

preparation for recording video, 255

resetting camera, 242

switching shooting modes, 159, 215

tagging video shots, 201

Time Lapse Video shooting mode, 204

troubleshooting wireless connection, 276-277

turning on Protune option, 206

Use with Current Wi-Fi Remote option, 241

Use with Smart Remote option, 241

wireless range, 102

Tiffen's Steadicam Curve, 288

- Tool Thumb Screw Wrench + Bottle Opener, 288-289
- Action Clamp & Locking Arm mount, 97
- action shots
 - Burst Shooting Mode, 177
 - fast-moving subjects, 172-173
 - first- or third-person perspective, 169-170, 185-186
 - special effects, 343-344
- additional batteries, need for, 31
- adhesive strips, 256
- Adobe Photoshop Express app, 322
- Adobe Photoshop Touch app, 322
- Adobe Premiere Pro CC, 349
- advertising on YouTube, 377
- Afterlight app, 322
- albums (Facebook), creating, 364
- alerts
 - Beeps option, 237
 - locating camera, 319
- Amazon.com
 - Canopy Protection, 285
 - lighting kits, 233
- Android GoPro Mobile App, 298
- Android devices, GoPro Mobile App on, 50
- Anti-Fog Inserts, 256
- angles
 - angle of camera for selfies, 171
 - selecting, 83-84
 - shooting photos/video, 13
- animals, shooting photos of, 172
- Anti-Fog Inserts, 78, 278
- Anti-Vibration Locking Plug, 87-88, 252, 256
- apps. *See also* GoPro mobile app; software
 - 10 – Fast GoPro & DJI Phantom Video Sharing with Music app, 321
 - Lab for GoPro app, 322
 - photo/video editing, 322
 - Prizmia for GoPro app, 321-322
 - social media apps, 360
 - Twitter, 366-368
- App Settings menu (GoPro Mobile App), 308-309
- App Store, 298
- architecture, shooting photos of, 174-175
- artificial lighting. *See* external lighting
- art of digital photography, 5
- attaching
 - housing to mount, 58, 84
 - with Quick-Release Anti-Vibration Locking Plug, 87-88*
 - with Quick Release Buckle and Thumb Screw, 85-86*
 - LCD Touch BacPac, 113
 - mounts to self/equipment, 87
 - tethers, 86
- Attachment Key for Smart Remote, 105
- audience
 - considering when editing video, 348
 - shooting photos from, 173
- audio
 - alerts, 196
 - editing video, 346
 - recording
 - built-in microphone, 222-225*
 - external microphone, 225-228*
 - poor quality, 292-293*
 - wind noise, 227, 293*
- Audio Alert speaker, 34
- Audio-Technica ATR-3350 Lavalier Omnidirectional Condenser Microphone, 228
- Auto Charger, 35, 132
- Auto Download option (App Settings menu), 309
- Auto Low Light option, 194-195, 231, 265
- Auto Off option, 238
- Avid Media Composer, 349

B

backdoors

- with accessories, 67
 - for Battery BacPac, 117
 - for housings, 18
 - for LCD Touch BacPac, 116
 - preparation for recording video, 254
 - replacing, 70
 - selecting, 65-69
 - for Dive Housing, 74*
 - for Skeleton Housing, 73*
 - for Standard Housing, 72*
 - Skeleton Backdoor
 - audio quality, 292-293*
 - sound recording, 223*
 - Standard Backdoor
 - audio quality, 292*
 - for underwater photos, 175*
 - sound recording, 223*
 - waterproof, 78
- background, framing photos with, 185
- back of camera, 30-31
- BacPac Backdoor, 72, 78, 116
- BacPac Dive Backdoor, 74
- Barndoor Lighting Outfitters lighting kits, 233
- batteries, 131
- additional available, 31, 132
 - battery life
 - Auto Off option, 238*
 - Night Lapse Shooting Mode, 149*
 - Protune option, 150*
 - recording video, 193*
 - Time Lapse Shooting Mode, 149*
 - bringing extra, 166
 - by camera model, 131
 - compartment location, 30-31

- dead, 30, 272-274
 - estimated battery life, 133-134
 - generic batteries, 134-136
 - increasing, 136-137
 - initial setup, 44-45
 - inserting, 137-138
 - life per charge, 36
 - need for additional, 253, 268
 - recharging, 35, 132
 - for Smart Remote, 103-105
 - status of, 45, 133
- Battery BacPac, 18, 72, 76, 117
- backdoors, 66
 - Hero Port, 30-31
 - initial camera setup, 45
 - overheated camera, 193
- battery compartment, 35
- Battery Level option, 241
- Beeps option, 237
- Best Buy Geek Squad Protection, 285
- Blackout Housing, 78
- explained, 74-75
 - when to use, 181
- blue Status Lights, troubleshooting, 283
- Bluetooth, 298, 301-306
- Blurb.com, 385
- blurry low-light images, troubleshooting, 289
- Bobber, 21, 90, 263
- Bodyboard Mount, 89
- bottom of camera, 35-36
- Brightness option (LCD Touch BacPac), 242
- buildings, shooting photos of, 174-175
- built-in microphone, 222-225
- bundles
- for accessories, 12
 - for GoPro Hero4 Black camera, 27-28
- Burst Shooting Mode, 147-148, 173, 177
- button access with housings, 28, 60

buying. *See also* selecting
batteries, 134-136
GoPro cameras and accessories, 6
memory cards, 123-124

C

cables

3D Sync Cable, 268
Micro-HDMI cable, 33
Mini USB Composite cable, 33

Camera Info Settings options (GoPro Mobile App), 319

Camera Models option (App Settings menu), 309

Camera Reset option, 242-243

camera resets during software updates, 53-55

camera, setting up, 44-48

Camera Software, updating, 50-55, 284
with GoPro Mobile App, 51-52, 309
with GoPro Studio software, 52-53
manual updates, 54-55

Camera Status Light, 29

Camera Status Settings options (GoPro Mobile App), 319

camera tether, 256

Canopy Protection, 285

CaptureP.O.V. mount, 98, 288

Card Data Recovery, 281

Card Recovery, 281

Card Recovery Pro, 281

Calibex lighting kits, 233

cellular data connections, 309

changing shooting modes, 236

charging battery, 35, 132-133, 272-274
Battery BacPac, 117
Smart Remote battery, 103-105

Chesty Chest Harness, 89

Chesty Mount, 84, 288

choosing. *See* selecting

choppy video playback, troubleshooting, 282

Cinamatic, 350

Class 10 rating (memory cards), 120-121

cleaning

battery charger connectors, 273
housings, 63-65
lens, 64, 166
rubber seal (housings), 65
water spots on housing, 282

Clips Video Editor, 350

cloud-based services, 357-359

color

dull colors, troubleshooting, 290-291
color filters for underwater photos, 176
Color settings, 151-152, 207

comparison of camera models, 10-12

compatible batteries, 134-136

connections

GoPro camera to television, 33
GoPro Mobile App, 298, 301-306
unrecognized camera, troubleshooting, 284
wireless connections, troubleshooting, 276-277

Connect Your Camera (App Settings menu), 308

content transfer, wired versus wireless, 33

continuous lighting, 232-233

Continuous Rate option (Continuous Shooting Mode), 145

Continuous Shooting Mode, 145-146

controlling camera from GoPro Mobile app, 314-316

converting video clips for editing, 338-339

copyright issues, 229

Corel Paint Shop Pro, 187

correcting fisheye effect, 175

creative inspiration for photos/video, 293-295

cropping photos, 187

Curved Adhesive Mount, 89

customizing settings, 47-48

D

damaged camera, troubleshooting, 284-285

data recovery software, 281

date, setting, 48, 238

dead batteries, 30

dead battery, troubleshooting, 272-274

decreasing resolution, 180

Default Mode option, 236

default Protune options, resetting, 153, 208

default settings

- list of, 47
- resetting camera to, 275-276
- Setup menu, 235

Default shooting mode

- recording video, 196
- selecting, 154

Delete All Files From SD Card option, 239

deleted files, recovering, 291-292

Delete Last File option, 238

Delete Settings options (GoPro Mobile App), 319

deleting memory card content, 123, 126-128, 331

digital photography

- resolution, 7
- skill and art of, 5

digital photos. *See* photos

directly accessing Setup menu, 244-245

Dive Housing, 17, 78

- audio quality, 292
- backdoors, 74
- color filters, 176
- explained, 74
- Floaty Backdoor, 69
- for underwater photos, 175
- overheated camera, 193
- sound recording, 224

- waterproofing, 278
- when to use, 181

dive masks, 21, 98

downloading

- GoPro Studio software, 330-331
- user manuals, 328

Dropbox, 357

Dual Battery Charger + Battery for Hero4, 35

Dual Battery Charger, 132

Dual Battery Charger for Hero3+/3, 35

Dual Hero System, 268

Dual Hero System Housing, 77

dull colors, troubleshooting, 290-291

E

EasyCanvasPrints.com, 385

editing

- HD video, 24
- photos

 - apps for*, 322
 - choosing resolution*, 179
 - fisheye effect*, 290, 313-314
 - in Instagram*, 372-373
 - with software*, 165, 186-187

- video. *See also* GoPro Studio software

 - 3-D video, 268
 - adding audio, 224
 - adding music and sound effects, 228-230
 - apps for*, 322
 - converting clips, 338-339
 - creating new project, 337
 - during recording, 347
 - Edit Templates, 332-333, 340
 - enhancing video, 345
 - GoPro Studio software, 191

- multiple perspectives, 264*
- photos in, 337*
- previewing video, 344*
- saving work in progress, 332-333*
- selecting clips, 338-339*
- software for, 349-350*
- sound, 346*
- special effects, 343-344*
- steps in, 328-329, 340-344*
- storyboards, 329*
- system requirements, 326*
- tips for, 347-349*
- transferring raw content to computer, 335-337*
- trimming clips, 336*
- video editor's role, 327*

Edit Templates for GoPro Studio software, 332-333, 340

Effect Presets (GoPro Studio software), 345

email, sharing photos/video, 355-357

enhancing video, 345

equipment, attaching mount to, 87

error messages, 129

estimated battery life, 133-134

EV Comp settings, 153, 208

exporting video, 334, 342, 346-347

Exposure Value Compensation (EV Comp) settings, 153, 208

extension poles for selfies, 171

external lighting

- choosing, 232-233

- recording video, 230-233

external microphones, 35

- audio recording, 225-228

- choosing, 226-231

- preparation for recording video, 256

- with wind screens, 293

F

Facebook

- accessing, 360

- GoPro page, 295

- privacy settings, 361-363

- sharing photos/video, 361-364

factory default settings, resetting camera to, 275-276

fast-moving subjects, shooting photos of, 172-173

Fetch mount, 90

Field of View (FOV), 8

- choosing, 259-261

- fisheye effect, avoiding, 289-290

- GoPro Hero4 camera

- in Video+Photo shooting mode, 199*

- in Video shooting mode, 198*

- Video shooting mode, 197

File Repair icon, 281

file size, reducing, 291, 358

filters

- lens filters, 99

- preparation for recording video, 256

- special effect filters in Prizmia for GoPro app, 321-322

- for underwater photos, 176

Final Cut Pro X, 349

finger swipes

- GoPro Hero4 camera, 114

- LCD Touch BacPac, 115, 157, 246

finger taps

- GoPro Hero3+ camera, 115

- LCD Touch BacPac, 157, 246

first-person perspective, 13, 169-170, 185-186

fisheye effect

- correcting, 175

- removing, 313-314

- troubleshooting, 289-290

flashing blue Status Lights,
troubleshooting, 283

Flat Adhesive Mount, 89

Flickr.com, 357

Floaty Backdoor, 69

fogged lens, troubleshooting, 278

formatting memory cards, 239

with GoPro Hero3+ camera, 128-129

with GoPro Hero4 camera, 126-128

fotoflot.com, 385

FOV (Field of View), 8

choosing, 259-261

fisheye effect, avoiding, 289-290

GoPro Hero4 camera

in Video+Photo shooting mode, 199

in Video shooting mode, 198

Video shooting mode, 197

FPS (Frames Per Second), 8

choosing, 259

*in Video+Photo shooting mode,
198-199*

in Video shooting mode, 197-198

Frame Housing, 222

audio quality, 292-293

damaged camera, 284

explained, 75-76

lens filter, 99

sound recording, 223

when to use, 181

Frames Per Second (FPS), 8

choosing, 259

*in Video+Photo shooting mode,
198-199*

in Video shooting mode, 197-198

framing photos

action shots, 170

Rule of Thirds, 183-185

with surroundings, 185

with viewfinder, 180-181

front of camera, 29-30

Full error message, 280

full memory card, troubleshooting

card fills too fast, 291

replacing full card, 292

G

Geek Squad Protection, 285

Genaray lighting kits, 233

generic batteries, 134-136

geotagging, 355

in Instagram, 374

in Twitter, 370

gestures. *See* finger swipes

goals, considering when editing video, 348

GoFix app, 175, 290, 313

Google

Google Picasa, 187

Google Play, 298

ownership of YouTube, 377

Gooseneck mount, 90

GoPole, 6, 90, 97

Bobber, 263

GoPro Auto Charger, 132

GoPro Battery BacPac, 136

GoPro cameras

accessories. *See* accessories

advantages of, 3-4

components

back of camera, 30-31

bottom of camera, 35-36

front of camera, 29-30

left side of camera, 34

right side of camera, 31-33

Status Lights, 43-44

top of camera, 34-35

connecting to televisions, 33

housings. *See* housings

- initial setup, 44-49
 - customizing settings*, 47-48
 - inserting battery and memory card*, 44-45
 - physical preparations*, 45-46
 - remote control*, 49
- lack of power, 30
- mounts. *See* mounts
- overheating, 49
- required equipment, 25
- resetting, 30
- selecting, 6
 - GoPro Hero3+ Silver model*, 14-15
 - GoPro Hero3 White model*, 14-15
 - GoPro Hero4 Black model*, 15-16
 - GoPro Hero4 Silver model*, 15-16
 - GoPro Hero model*, 13-14
 - model comparison*, 9-16
- software updates, 12
- upgrades, 14
- weight of, 28
- where to buy, 6
- GoPro Channel, 294
 - accessing, 381
 - sharing photos/video, 380-384
 - viewing, 320
- GoPro Customer Service Department
 - contact information, 285
- GoPro Dual Battery Charger, 132
- GoPro Dual Hero System, 268
- GoPro Facebook page, 295
- GoPro Head Strap Mount, 169
- GoPro Hero camera
 - comparison with other models, 10-11
 - explained, 13-14
 - picture-taking features available, 142-143
 - video-recording features available, 192-193
 - Wireless mode, lack of, 298
- GoPro Hero3 camera
 - connections with GoPro Mobile App, 298
 - finger taps on LCD Touch BacPac, 246
 - picture-taking features available, 142-143
 - video-recording features available, 192-193
- GoPro Hero3 White cameras
 - comparison with other models, 10-11
 - explained, 14-15
- GoPro Hero3+ Black camera, 133-134
- GoPro Hero3+ camera
 - battery type, 131
 - connections with GoPro Mobile App, 298
 - finger taps, 115, 246
 - formatting memory cards, 128-129
 - FOV (Field of View) options, 261
 - inserting battery, 138
 - left side components, 34
 - pairing Smart Remote, 108
 - picture-taking features available, 142-143
 - video-recording features available, 192-193
- GoPro Hero3+ Silver cameras
 - comparison with other models, 10-11
 - explained, 14-15
- GoPro Hero4 Black camera
 - battery life, 134
 - bundle components, 27-28
 - comparison with other models, 10-11
 - explained, 15-16
 - FOV (Field of View) options, 261
 - picture-taking features available, 142-143
 - software updates, 50
 - video-recording features available, 192-193

GoPro Hero4 camera

- battery compartment, 35
- battery type, 131
- compatible batteries, 136
- connections with GoPro Mobile App, 298
- finger swipes, 114
- formatting memory cards, 126-128
- FOV (Field of View) options, 261
- HiLight Tagging option, 200-201
- inserting battery, 137-138
- left side components, 34
- pairing Smart Remote, 106-108
- pairing with GoPro Mobile App, 301-306
- rotating video shots, 210
- switching shooting modes directly, 154-156, 210-213
- Time Lapse Video shooting mode, 202-205
- updating Camera Software, 52-53
- Video+Photo shooting mode, 199
- Video shooting mode, 198

GoPro Hero4 Silver camera

- comparison with other models, 10-11
- explained, 15-16
- picture-taking features available, 142-143
- software updates, 50
- video-recording features available, 192-193

GoPro Hero HD Camera Video Lighting Set, 230**GoPro Mobile App, 22-24, 33**

- accessing Setup menu, 248-249
- on Android and Windows devices, 50
- App Settings menu, 308-309
- Auto Low Light option, 195
- benefits of, 297
- connection types, 298

content transfer, 33

- controlling camera from, 314-316
 - initial camera setup, 46, 49
 - installing, 299-301
 - launching, 301
 - locating camera with, 240
 - main menu screen, 307, 314-316
 - My GoPro Album, accessing, 309-310, 320
 - online store, accessing, 320
 - pairing, 279
 - with GoPro Hero4 camera, 301-306*
 - Use with Current Wi-Fi Remote option, 241*
 - Use with Smart Remote option, 241*
 - preparation for recording video, 255
 - Rule of Thirds, 183
 - sharing photos, 310
 - shooting mode settings, 316-320
 - Smart Remote versus, 298-299
 - status screen information, 38-40
 - supported devices, 298
 - switching shooting modes, 160-162, 215-218
 - tagging video shots, 201
 - Time Lapse Video shooting mode, 204
 - transferring photos/videos from
 - automatically, 309*
 - selected content, 310-313*
 - troubleshooting video playback, 282-283
 - turning on Protune option, 206
 - updating Camera Software, 51-52, 309
 - as viewfinder, 180
 - viewing GoPro Channel, 320
 - wireless connections, troubleshooting, 276-277
 - wireless range, 109
- GoPro online store, accessing, 320
- GoPro Polarizing Filter, 99

GoPro Studio software, 24

- 3-D video editing, 268
- alternatives to, 349-350
- benefits of, 325-326
- creating new project, 337
- downloading, 330-331
- Edit Templates, 332-333, 340
- Effect Presets, 345
- enhancing video, 345
- exporting video, 342, 346-347
- main screen options, 333-334
- raw video content, importing, 335-337
- setting preferences, 331-332
- system requirements, 326
- tagged video shots, 267
- trimming clips, 336
- updating Camera Software, 52-53
- user manual, downloading, 328
- video editing, 191, 340-344

GoPro Studio User Manual for Mac Operating Systems, 328

GoPro Studio User Manual for Windows Operating Systems, 328

GoPro Wall Charger, 132

GoPro website, 123, 294

GorillaPod, 97

grips, 263

H

Handlebar/Seatpost/Pole Mount, 90, 186

Handler mount, 90

handles, 263

hand movements, avoiding sound from, 293

hardware requirements for video playback, 282

hashtags, 365-367

HDMI

- HDMI port, 32
- Micro-HDMI cable, 33

HD video, 7-9

head-on perspective

- avoiding, 168
- recording video, 261

Head Strap + QuickClip mount, 91, 288

Helmet Front Mount, 84, 92

Helmet Side Mount, 84, 92

Hero Port, 30-31, 76

high-definition video, 7-9

high-resolution photos. *See* photos

Hightail, 357

HiLight Tagging option, 200-201

housings, 57

- attaching to mounts, 58, 84
 - with Quick-Release Anti-Vibration Locking Plug*, 87-88
 - with Quick Release Buckle and Thumb Screw*, 85-86
- backdoors, 18
 - for Battery BacPac*, 117
 - for LCD Touch BacPac*, 116
 - replacing*, 70
 - selecting*, 65-69
- Blackout Housing, 74-75
- buttons, 28, 60
- choosing, 181
- cleaning, 63-65
- Dive Housing, 74
 - audio quality*, 292
 - color filters*, 176
 - overheated camera*, 193
 - for underwater photos*, 175
 - waterproofing*, 278
- Dual Hero System Housing, 77
 - explained*, 16-18
- Frame Housing, 75-76, 222
 - audio quality*, 292-293
 - damaged camera*, 284
- importance of, 57
- initial camera setup, 46

- inserting camera, 62-63
- latch protection, 61
- parts of, 59
- preparation for recording video, 253-256
- removing camera from, 60-61
- selecting by camera model, 71
- Skeleton Housing, 72-73
 - audio quality*, 292-293
 - button access*, 28
 - wind screen*, 227
- sound versus waterproofing, 222-223
- Standard Backdoor, 175
- Standard Housing, 71-72
 - audio quality*, 292
 - overheated camera*, 193
 - for underwater photos*, 175
 - waterproofing*, 278
- third-party housings, 77
- types available, 58
- waterproof, 78
- water spots on, 282
- where to buy, 6

I

- IB Audio music library, 229
- iCloud, 357
- iMac with Retina 5K Display, 326
- iMotion Pro, 350
- iMovie, 322, 349
- importing raw video content, 335-337
- increasing resolution, 180
- initial setup of camera, 44-49
 - customizing settings, 47-48
 - inserting battery and memory card, 44-45
 - physical preparation, 45-46
 - remote control, 49

- inserting
 - battery, 44-45, 137-138
 - camera into housing, 62-63
 - memory cards, 44-45, 124-126
- Instagram
 - benefits of, 365
 - hashtags, 365
 - sharing photos/video, 364-365, 371-374
- installing GoPro Mobile App, 299-301
- Instrument Mounts, 92
- insurance coverage for camera, 285
- Internet connections, updating Camera Software, 52
- Interval option
 - Looping Video shooting mode, 199
 - Multi-Shot menu, 178
 - Night Lapse Shooting Mode, 149
 - Time Lapse Shooting Mode, 148, 202
 - Video+Photo shooting mode, 198
- iPhone/iPad
 - GoPro Mobile App, 298
 - video editing apps, 350
- ISO Limit settings, 152, 207-208

J-K

- Jaws: Flex Clamp mount, 92, 169
- Joby, 97
- Joby's Action Tripod with GoPro Mount, 263
- Junior Chesty, 89

L

- Lab for GoPro app, 322
- landscape mode, 170
- latch protection for housings, 61
- launching GoPro Mobile App, 301

LCD Status Screen, 29, 36-44

- File Repair icon, 281
- menu hierarchy, 40-41
- remaining memory card capacity, 122
- Shooting Mode options, 38
- software updates, 55
- Temperature icon, 281
- user interfaces, 39-40

LCD Touch BacPac, 12, 18, 22, 38, 72, 106, 111-116, 132, 136

- accessing Setup menu, 246-247
- attaching to camera, 113
- Auto Low Light option, 195
- backdoors, 66, 116
- Battery BacPac versus, 117
- finger swipes, 115
- Hero Port, 30-31
- initial camera setup, 45
- On Screen Display (OSD) option, 238
- overheated camera, 193
- pairing GoPro Mobile App with camera, 304
- preparation for recording video, 254-256
- previewing on, 123
- Protune option, 206
- resetting camera, 242
- Rule of Thirds, 183-185
- Setup menu options, 242
- shooting photos with, 180-181
- status screen information, 38-39
- switching shooting modes, 157-158, 213-215
- turning on/off, 114
- unlocking touchscreen, 114
- as viewfinder, 180
- viewing photos/videos, 116
- when to use, 116

LED Blink option, 237

left side of camera, 34

lens, 29

- cleaning, 64, 166
- fish-eye effect, correcting, 175
- protecting with Frame Housing, 76
- Protective Lens Filter, 181
- Wide Field of View, 167

Lens Corrector app, 175

Lens Corrector for GoPro app, 290, 313-314

lens filters, 99, 256

lens fog, troubleshooting, 278

Levenger storyboards, 329

License Agreement option (App Settings menu), 309

lighting

- Auto Low Light option, 231
- dull colors, troubleshooting, 290-291
- EV Comp settings, 153, 208
- external lighting
 - choosing, 232-233*
 - recording video, 230-233*
- ISO Limit settings, 152, 207-208
- low-light situations
 - shooting photos in, 186*
 - troubleshooting blurry images, 289*
- Night Shooting Mode, 146-147
- overexposed images, troubleshooting, 286-287
- primary light source, 182-183
 - positioning, 287*
 - recording video, 264-265*
- recording video, 194-195
- Spot Meter option, 146
- for underwater photos, 175-176
- well-lit subjects, 173
- White Balance settings, 151, 207

lights on camera. *See* Status Lights

Locate Camera option, 240

locating camera, 319

locations, adding

in Instagram, 374

in Twitter, 370

Lock option (LCD Touch BacPac), 242

Looping Video shooting mode, 199-200

Low Light option (Video shooting mode), 197

low-light situations

blurry images, troubleshooting, 289

recording video, 194-195, 231, 265

shooting photos, 173, 186

Lume Cube Video Light, 232

M

Magenta Dive Filter, 176

main screen options (GoPro Studio software), 333-334

manual software updates, 54-55

Medium FOV (Field of View) option, 260

megapixels (MP), 7

Megapixels option

choosing resolution, 179-180

Burst Shooting Mode, 148

Continuous Shooting Mode, 145

Night Lapse Shooting Mode, 149

Night Shooting Mode, 147

Single Shooting Mode, 144

Time Lapse Shooting Mode, 148

memory cards, 119

bringing extra, 123, 166

buying, 123-124

content transfer, 280

to computer, 335-337

with GoPro Mobile App, 309-313

wired versus wireless, 33

Delete All Files From SD Card option, 239

Delete Last File option, 238

deleting from, 123, 331

formatting

with GoPro Hero3+ camera, 128-129

with GoPro Hero4 camera, 126-128

inserting, 124-126

initial setup, 44-45

lack of storage space

card fills too fast, 291

replacing full card, 292

microSD Memory Card slot, 32

need for, 28, 253, 268

protecting, 129

purpose of, 120

reformatting, 239

removing

from camera, 126

from packaging, 125

requirements, 33

SD Card Capacity option, 241

speed class, 120-121

storage capacity, 121-123

troubleshooting, 129

viewing remaining capacity, 122

menu hierarchy (LCD Status Screen), 40-42

Mic Adapter, 35, 76, 221, 224-225, 256

microfiber lens cleaning cloth, 64, 256

Micro-HDMI cable, 33

Micro-HDMI Port, 32

microphones

3.5mm Mic Adapter, 221, 224-225

built-in microphone, 35, 222-225

external, 35

audio recording, 225-228

choosing, 226-231

with wind screens, 293

poor audio quality, troubleshooting, 292-293

preparation for recording video, 256

unwanted noise in recording, 224-225

- wind noise
 - avoiding*, 227
 - troubleshooting*, 293
- microSD Card Reader, 55
- microSD memory cards. *See* memory cards
- microSD Memory Card slot, 32
- Microsoft Movie Maker, 349
- Microsoft OneDrive, 357
- Mic Stand Mount, 93
- MicW iGoMic Stereo Microphone, 227
- Mini USB Composite cable, 33
- Mini-USB port, 32, 35
- mobile apps. *See* GoPro Mobile App
- mobile devices. *See* GoPro Mobile App
- mounts, 81
 - attaching housing to, 58, 84
 - with Quick-Release Anti-Vibration Locking Plug*, 87-88
 - with Quick Release Buckle and Thumb Screw*, 85-86
 - attaching to self/equipment, 87
 - captureP.O.V. mount, 288
 - Chesty Mount, 288
 - choosing, 181
 - explained, 19-21
 - GoPro Head Strap Mount, 169
 - Handlebar/Seatpost/Pole Mount, 186
 - Head Strap/QuickClip mount, 288
 - importance of, 81
 - initial camera setup, 46
 - Jaws: Flex Clamp Mount, 169
 - list of popular, 89-96
 - perspectives/shooting angles, selecting, 84
 - preparation for recording video, 253-256
 - purpose of, 91
 - recording video, 262-263
 - selecting, 82-83

- shooting tips, 82
- third-party, 96-99
- Tiffen Steadicam Curve, 266-267
- troubleshooting, 288-289
 - where to buy, 6
- movement, shaking/vibration versus, 92
- Movo GM100 Lavalier Lapel Clip-on Omnidirectional Condenser Microphone, 228
- MP (megapixels), 7
- multiple perspectives
 - editing video, 264
 - recording video, 268
- Multi-Shot menu options, 154, 177-178, 318
- music, adding to video, 228-230
- Music Case music library, 229
- My GoPro Album, accessing, 309-310, 320

N

- name of camera, resetting, 279
- Name option, 239-240
- Narrow FOV (Field of View) option, 260
- Nextag, 124
- Night Lapse Shooting Mode, 149, 178
- Night Shooting Mode, 146-147
 - in low-light situations, 186
 - Shutter option, 178
- noise
 - in sound recording, 224-225
 - wind noise
 - avoiding*, 227
 - troubleshooting*, 293
- NO SD error message, troubleshooting, 280
- NVG Mount, 93

O

Octomask, 6, 21, 82, 98
 Olympus Microphone, 224
 OneDrive, 357
 online cloud-based services, 357-359
 online searches for memory cards, 124
 On Screen Display (OSD) option, 238
 operating system (OS), updating, 50-55
 with GoPro Mobile App, 51-52
 with GoPro Studio software, 52-53
 manual updates, 54-55
 order of shots (video), 253
 organizing video editing, 348
 orientation (video), rotating, 263
 Orientation Up/Down option, 210, 236
 overexposed images, troubleshooting, 286-287
 overheated camera, troubleshooting, 49, 193, 281

P

Paint Shop Pro, 187
 pairing
 GoPro Mobile App, 279
 with GoPro Hero4 camera, 301-306
 Use with Current Wi-Fi Remote option, 241
 Use with Smart Remote option, 241
 Smart Remote, 279
 with GoPro Hero3+ camera, 108
 with GoPro Hero4 camera, 106-108
 Use with Current Wi-Fi Remote option, 241
 Use with Smart Remote option, 241

passwords
 resetting, 279
 setting, 239-240
 Peak Designs, 6, 98
 people, shooting photos of, 170-171
 perspectives
 choosing, 261-264
 editing video, 264
 first-person, 169-170, 185-186
 head-on, avoiding, 168
 multiple perspectives, 268
 selecting, 83-84
 shooting photos/video, 13
 third-person, 169-170, 185-186
 pets, shooting photos of, 172
 Photogene 4 app, 322
 photography. *See* digital photography
 Photo menu options, Multi-Shot menu options versus, 154
 photos
 editing
 apps for, 322
 choosing resolution, 179
 fisheye effect, 290, 313-314
 in Instagram, 372-373
 with software, 165, 186-187
 printing, 358-359, 384-385
 rotating, 236
 sharing
 via cloud-based services, 357-359
 via email, 355-357
 via Facebook, 361-364
 via GoPro Channel, 380-384
 via Instagram, 364-365, 371-374
 via Pinterest, 375
 privacy issues, 354-355
 via SnapChat, 375
 via social media, 359-375
 suggestions for, 384-385

- via Tumblr, 375
- via Twitter, 364-370
- with GoPro Mobile App, 310
- shooting, 141
 - Burst Shooting Mode, 147-148, 173, 177
 - choosing housings and mounts, 181
 - choosing shooting mode, 176-180
 - choosing subject, 167-176
 - Color settings, 151-152
 - Continuous Shooting Mode, 145-146
 - creative inspiration for, 293-295
 - Default shooting mode, 154
 - EV Comp settings, 153
 - features available by camera model, 142-143
 - ISO Limit settings, 152
 - in low-light, 186
 - Night Lapse Shooting Mode, 149, 178
 - Night Shooting Mode, 146-147, 178, 186
 - preparation for, 166-167
 - primary light source, 182-183
 - Protune option, 150-151, 162
 - Rule of Thirds, 183-185
 - Sharpness settings, 152-153
 - simultaneously with video, 144, 198-199
 - Single Shooting Mode, 144-145
 - switching shooting modes, 153-162
 - Time Lapse Shooting Mode, 148, 205
 - troubleshooting common problems, 286-293
 - with viewfinder, 180-181
 - White Balance settings, 151
- transferring with GoPro Mobile App, 309-313
- viewing
 - GoPro Channel, 320
 - LCD Touch BacPac, 116
 - in My GoPro Album, 320
 - with GoPro Mobile App, 309-310
 - On Screen Display (OSD) option, 238
 - within edited video, 337
- Photos app, 322, 368-370
- Photo Settings options (GoPro Mobile App), 317
- Photoshop Elements, 187
- Picasa, 187
- pictures. *See* photos
- Pinnacle Studio app, 322, 349
- Pinterest, 375
- Pixelmator, 187, 322
- pixels, 7
- planning. *See* preparation
- Playback option (LCD Status Screen), 38, 41
- playing video
 - GoPro Channel, 320
 - in GoPro Mobile App, 282-283
 - from GoPro users, 294
 - LCD Touch BacPac, 116
 - On Screen Display (OSD) option, 238
 - troubleshooting choppy playback, 282
 - troubleshooting shaky playback, 288
 - Video Format option, 237
- Polarizing Filter, 99
- PolarPro, 98-99
 - Polar Pro Filters, 176
 - Polar Pro Promic, 226
- port door, 31-32
- portrait mode, 170
- positioning
 - mounts, 288-289
 - primary light source, 287
- post production. *See* video: editing
- Power/Mode button, 29
 - toggle Shooting Mode options, 38
 - troubleshooting, 30
- preferences. *See* settings
- Premium Beat music library, 229

preparation

- for recording video, 252-253
- for shooting photos, 82-83, 166-167

previewing edited video, 344

primary light source, 182-183

- positioning, 287
- recording video, 264-265

printing photos, 358-359, 384-385

privacy issues

- Facebook, 361-363
- sharing photos/video, 354-355
- Twitter, 370
- YouTube, 376, 379

Privacy Policy option (App Settings menu), 309

Prizmia for GoPro app, 321-322

Product Manuals and Support option (App Settings menu), 308

Promic Kit from Polar Pro, 226

protecting memory cards, 129

Protective Lens Filter, 181

Protune option, 37, 150

- battery life, 150
- benefits of using, 150-151, 205-207
- Burst Shooting Mode, 148
- Color settings, 151-152, 207
- Continuous Shooting Mode, 146
- EV Comp settings, 153, 208
- ISO Limit settings, 152, 207-208
- Night Lapse Shooting Mode, 149
- Night Shooting Mode, 147
- recording video, 196
- resetting to default, 153, 208
- settings available, 41
- Sharpness settings, 152-153, 208
- Single Shooting Mode, 145
- submenu settings, 162, 218
- Time Lapse Shooting Mode, 148
- Video shooting mode, 197
- when to use, 178-179

White Balance settings, 151, 207

publishing. *See* sharing

purchasing. *See* buying

Q

Qudos Action Waterproof Video Light, 230

QuickClip, 91

Quick-Release Anti-Vibration Locking Plug, 87-88

Quick Release Buckle, 58, 77, 81, 84-85

- attaching housing to mount, 85-86
- on dive masks, 98

QuikCapture feature, 209, 237

R

Rain-X, 282

Rate option (Burst Shooting Mode), 147

raw video content, importing, 335-337

read speed (memory cards), 121

rechargeable batteries. *See* batteries

recharging

- battery, 35, 132-133, 272-274
- Battery BacPac, 117
- Smart Remote battery, 103-105

recording video, 189

- in 3-D, 268
- audio
 - built-in microphone*, 222-225
 - external microphone*, 225-228
 - wind noise*, 227

Auto Low Light option, 194-195

battery life, 193

creative inspiration for, 293-295

editing during, 347

external lighting, 230-233

features available by camera model, 192-193

- FOV (Field of View) options, 259-261
- FPS (Frames Per Second) rate, 259
- goals of, 191
- housings and mounts, 253-256
- lighting, 264-265
- multiple perspectives, 268
- order of shots, 253
- Orientation Up/Down option, 210
- overheated camera, 193
- perspective, 261-264
- preparation for, 252-253
- Protune option
 - benefits of using*, 205-207
 - Color settings*, 207
 - EV Comp settings*, 208
 - ISO Limit settings*, 207-208
 - Sharpness settings*, 208
 - submenu settings*, 218
 - White Balance settings*, 207
- QuikCapture feature, 209, 237
- resolution
 - choosing*, 190, 256-259
 - Superview*, 192
- as separate files, 200
- shakiness, avoiding, 252, 265-267
- shooting modes, 190
 - choosing settings*, 194-196
 - Default shooting mode*, 196
 - Looping Video shooting mode*, 199-200
 - switching between*, 209-218
 - Time Lapse Video shooting mode*, 202-205
 - Video+Photo shooting mode*, 198-199
 - Video shooting mode*, 196-198
- simultaneously with shooting photos, 144, 198-199
- tagging shots, 200-201, 267
- troubleshooting, 286-293
 - blurry low-light images*, 289
 - dull colors*, 290-291
 - fisheye effect*, 289-290
 - memory card fills too fast*, 291
 - mount will not stay positioned*, 288-289
 - overexposed images*, 286-287
 - poor audio quality*, 292-293
 - recovering deleted files*, 291-292
 - replacing full memory card*, 292
 - shaky video playback*, 288
 - wind noise*, 293
- upside-down camera, 263
- recovering deleted files, 291-292
- Red Dive Filter, 176
- reducing
 - file size, 291
 - resolution, 180, 358
- reformatting memory cards, 239
- remote control. *See* Smart Remote
- removing
 - camera from housing, 60-61
 - fisheye effect, 290, 313-314
 - memory cards
 - from camera*, 126
 - from packaging*, 125
- repairing camera, 285
- Replacement Parts package, 88
- replacing
 - backdoors, 70
 - full memory card, 292
- Replay app, 322
- Replay Video Editor, 350
- requirements
 - GoPro cameras, 25
 - video playback, 282
- resets during software updates, 53-55

resetting

- camera, 30, 242-243, 274-276, 279
- default Protune options, 153, 208

resolution

- adjusting when shooting photos, 144
- choosing, 179-180

recording video, 190, 256-259

when transferring photos, 312

defined, 7

FOV (Field of View) options, 261

GoPro Hero4 camera

in Video+Photo shooting mode, 199

in Video shooting mode, 198

HD video, 7-9

reducing, 358

video, 192

Resolution option (Video shooting mode), 196

Return Merchandise Authorization (RMA) number, 285

right side of camera, 31-33

RMA (Return Merchandise Authorization) number, 285

Roll Bar Mount, 93

rotating

- photos, 187, 236
- video, 210, 236, 263

royalty-free music, 229

Royalty Free Music music library, 229

rubber seal (housings), cleaning, 65

Rule of Thirds, 183-185

S

saving

- video for export, 346-347
- video editing in progress, 332-333

screensavers, 385

scuba diving, 74

SD Card Capacity option, 241

SD ERR error message, 280-281

searching

for external lighting accessories, 232

for memory cards, 124

for royalty-free music and sound effects, 229

GoPro videos on YouTube, 295

selecting

backdoors, 65-69

for Dive Housing, 74

for Skeleton Housing, 73

for Standard Housing, 72

content to transfer, 312

Default shooting mode, 154

external lighting, 232-233

external microphones, 226-231

FOV (Field of View) options, 259-261

FPS (Frames Per Second) rate, 259

GoPro cameras, 6

GoPro Hero model, 13-14

GoPro Hero3 White model, 14-15

GoPro Hero3+ Silver model, 14-15

GoPro Hero4 Black model, 15-16

GoPro Hero4 Silver model, 15-16

model comparison, 9-16

housings, 71, 181, 253-256

memory cards

speed class, 120-121

storage capacity, 121-123

where to buy, 123-124

mounts, 82-83

perspectives/shooting angles, 83-84, 261-264

resolution, 179-180

recording video, 190, 256-259

when transferring photos, 312

Settings menu options, 215, 218

shooting modes, 176-180

- subject of photo, 167-176
 - animals*, 172
 - breaking current habits*, 168
 - buildings*, 174-175
 - fast-moving subjects*, 172-173
 - first- or third-person perspective*, 169-170, 185-186
 - people*, 170-171
 - recording video*, 261-264
 - selfies*, 171-172
 - underwater subjects*, 175-176
 - well-lit subjects*, 173
- video clips for editing, 338-339
- video settings, 194-196
- self, attaching mount to, 87
- selfies, 171-172
- Sena Bluetooth Audio Pack, 227-228
- sending camera for repair, 285
- separate files, recording video as, 200
- Set Date and Time option, 238
- settings
 - GoPro Studio software, 331-332
 - privacy settings
 - Facebook*, 361-363
 - YouTube*, 376, 379
 - for shooting modes, 316-320
- Settings menu
 - choosing options, 215, 218
 - default settings, 47
 - GoPro Mobile App, 308-309
 - initial camera setup, 47-48
- Settings option (LCD Status Screen), 38
- Settings/Tag button, 34, 103
- Setup menu
 - accessing, 243-249
 - directly from camera*, 244-245
 - from GoPro App*, 248-249
 - with LCD Touch BacPac*, 246-247
 - from Smart Remote*, 247
 - Auto Off option, 238
 - Battery Level option, 241
 - Beeps option, 237
 - Camera Reset option, 242-243
 - Default Mode option, 236
 - default settings, 235
 - Delete All Files From SD Card option, 239
 - Delete Last File option, 238
 - LCD Touch BacPac options, 242
 - LED Blink option, 237
 - Locate Camera option, 240
 - Name option, 239-240
 - On Screen Display (OSD) option, 238
 - Orientation Up/Down option, 236
 - purpose of, 235
 - QuikCapture option, 237
 - resetting, 242
 - SD Card Capacity option, 241
 - Set Date and Time option, 238
 - Use with Current Wi-Fi Remote option, 241
 - Use with Smart Remote option, 241
 - Version option, 240
 - Video Format option, 237
- Setup Settings options (GoPro Mobile App), 318
- shadows. *See* lighting
- shaking, 252, 265-267
 - avoiding, 91, 167
 - movement versus, 92
- shaky video playback, troubleshooting, 288
- sharing
 - photos
 - via cloud-based services*, 357-359
 - via email*, 355-357
 - via Facebook*, 361-364
 - via GoPro Channel*, 380-384
 - via Instagram*, 364-365, 371-374
 - via Pinterest*, 375

- privacy issues, 354-355*
- via SnapChat, 375*
- via social media, 359-375*
- suggestions for, 384-385*
- via Tumblr, 375*
- via Twitter, 364-370*
- with GoPro Mobile App, 310*

video

- via cloud-based services, 357-359*
- via email, 355-357*
- export options, 346-347*
- via Facebook, 361-364*
- via GoPro Channel, 380-384*
- via Instagram, 364-365, 371-374*
- via Pinterest, 375*
- privacy issues, 354-355*
- via SnapChat, 375*
- via social media, 359-375*
- suggestions for, 385*
- via Tumblr, 375*
- via Twitter, 364-370*
- via Vine, 380*
- via YouTube, 375-380*

Sharpness settings, 152-153, 208

Shooting Mode options, toggling, 38

shooting modes

- adjusting settings, 316-320

- changing, 236

- Default Mode option, 236

- photo, 316

- Burst Shooting Mode, 147-148, 173, 177*

- choosing, 176-180*

- Continuous Shooting Mode, 145-146*

- Default shooting mode, 154*

- Night Lapse Shooting Mode, 149, 178*

- Night Shooting Mode, 146-147, 178, 186*

- Photo menu versus Multi-Shot menu options, 154*

- Single Shooting Mode, 144-145*

- switching between, 153-162*

- Time Lapse Shooting Mode, 148, 205*

video, 190

- choosing settings, 194-196*

- Default shooting mode, 196*

- in GoPro Mobile App, 316*

- Looping Video shooting mode, 199-200*

- Time Lapse Video shooting mode, 202-205*

- Video+Photo shooting mode, 198-199*

- Video shooting mode, 196-198*

Shooting/Multi-Shot Mode option (LCD Status Screen), 38

shooting photos, 141. *See also* recording video

- angles. *See* angles

- choosing subject, 167-176

- animals, 172*

- breaking current habits, 168*

- buildings, 174-175*

- fast-moving subjects, 172-173*

- first- or third-person perspective, 169-170, 185-186*

- people, 170-171*

- selfies, 171-172*

- underwater subjects, 175-176*

- well-lit subjects, 173*

- creative inspiration for, 293-295

- extending battery life, 136-137

- features available by camera model, 142-143

- housings and mounts, 181

- in low-light, 186

- perspectives, 13

- preparation for, 82-83, 166-167

- primary light source, 182-183

- Protune option

- benefits of using, 150-151*

- Color settings, 151-152*

- EV Comp settings, 153*
- ISO Limit settings, 152*
- Sharpness settings, 152-153*
- submenu settings, 162*
- White Balance settings, 151*
- Rule of Thirds, 183-185
- shooting modes
 - Burst Shooting Mode, 147-148, 173, 177*
 - choosing, 176-180*
 - Continuous Shooting Mode, 145-146*
 - Default shooting mode, 154*
 - Night Lapse Shooting Mode, 149, 178*
 - Night Shooting Mode, 146-147, 178, 186*
 - Photo menu versus Multi-Shot menu options, 154*
 - Single Shooting Mode, 144-145*
 - switching between, 153-162*
 - Time Lapse Shooting Mode, 148, 205*
- shooting tips, 82, 88
- simultaneously with video, 144, 198-199
- troubleshooting, 286-293
 - blurry low-light images, 289*
 - dull colors, 290-291*
 - fish-eye effect, 289-290*
 - memory card fills too fast, 291*
 - mount will not stay positioned, 288-289*
 - overexposed images, 286-287*
 - recovering deleted files, 291-292*
 - replacing full memory card, 292*
 - shaky video playback, 288*
- with viewfinder, 180-181
- Shop by Activity option (GoPro website), 82, 294
- shot lists, 253
- showcasing. *See* sharing
- Shutterfly.com, 357-359, 384-385
- Shutter option
 - Multi-Shot menu, 178
 - Night Lapse Shooting Mode, 149
 - Night Shooting Mode, 147
- Shutter/Select button, 34, 38
- Single Shooting Mode, 144-145
- Skeleton Backdoor, 68, 72-73
 - audio quality, 292-293
 - sound quality, 68
 - sound recording, 223
- Skeleton BacPac Backdoor, 73, 116
- Skeleton Housing, 17, 68
 - audio quality, 292-293
 - backdoors, 73
 - button access, 28
 - explained, 72-73
 - sound recording, 223
 - wind screen, 227
- skill of digital photography, 5
- Sleep option (LCD Touch BacPac), 242
- smartphones. *See* GoPro Mobile App
- Smart Remote, 12, 22, 101-103
 - accessing Setup menu, 247
 - Attachment Key, 105
 - charging battery, 103-105
 - controlling camera, 109-111
 - GoPro Mobile App versus, 298-299
 - initial camera setup, 46, 49
 - locating camera with, 240
 - pairing, 279
 - GoPro Hero3+, 108*
 - GoPro Hero4, 106-108*
 - Use with Current Wi-Fi Remote option, 241*
 - Use with Smart Remote option, 241*
 - preparation for recording video, 255
 - resetting camera, 242
 - Status Screen, 40
 - switching shooting modes, 159, 215

- tagging video shots, 201
- Time Lapse Video shooting mode, 204
- turning on Protune option, 206
- wireless connections, troubleshooting, 276-277
- wireless range, 102
- SmartSound music library, 229
- Smugmug.com, 357
- SnapChat, 375
- Snapfish.com, 357
- SnapSeed app, 322
- social media
 - apps for, 360
 - sharing photos/video, 359-375
- software. *See also* apps
 - Camera Software, 284, 309
 - data recovery software, 281
 - for video editing, 165, 186-187, 349-350
 - GoPro Mobile App. *See* GoPro Mobile App
 - GoPro Studio software. *See* GoPro Studio software
 - Storyboard Pro for PCs, 329
 - Storyboard Quick software, 329
 - updates, 12, 50-55
 - with GoPro Mobile App, 51-52
 - with GoPro Studio software, 52-53
 - manual updates, 54-55
- sound
 - adding to video, 228-230, 346
 - Sound Indicator alerts, 44
 - sound recording
 - built-in microphone, 222-225
 - external microphone, 225-228
 - wind noise, 227, 293
- special effects
 - editing video, 343-344
 - Effect Presets, 345
 - filters in Prizmia for GoPro app, 321-322
- speed class (memory cards), 120-121
- Sportsman Mount, 94
- Spot Meter option
 - Burst Shooting Mode, 148
 - Continuous Shooting Mode, 145
 - Night Lapse Shooting Mode, 149
 - Night Shooting Mode, 147
 - recording video, 196, 265
 - Single Shooting Mode, 144
 - Time Lapse Shooting Mode, 148
 - Video shooting mode, 197
 - well-lit subjects, low-light camera, 173
 - when to use, 146
- Square Trade, 285
- Standard Backdoor, 18, 66, 72, 78
 - audio quality, 292
 - preparation for recording video, 254
 - sound recording, 223
 - with Standard Housing, 71
 - for underwater photos, 175
- Standard Dive Backdoor, 74
- Standard Housing, 17, 58, 78
 - audio quality, 292
 - backdoors, selecting, 72
 - explained, 71-72
 - Floaty Backdoor, 69
 - overheated camera, 193
 - preparation for recording video, 254
 - sound recording, 223-224
 - for underwater photos, 175
 - waterproofing, 278
 - when to use, 181
- Status Lights
 - back of camera, 31
 - battery status, 45
 - charging battery, 133, 273
 - flashing blue Status Lights, 283
 - front of camera, 29
 - LED Blink option, 237
 - locating camera, 319

T

- purpose of, 43-44
- recording video, 196
- top of camera, 35
- turning off, 44
- Status Screen. *See* LCD Status Screen
- Status Updates (Facebook), 362-363
- Steadicam Curve, 288
- storage capacity of memory cards, 121-123
- StoryBoard Pro for PCs, 329
- StoryBoard Quick software, 329
- storyboards, 253, 329
- straightening photos, 187
- subject of photo, choosing, 167-176
 - animals, 172
 - breaking current habits, 168
 - buildings, 174-175
 - fast-moving subjects, 172-173
 - first- or third-person perspective, 169-170, 185-186
 - people, 170-171
 - recording video, 261-264
 - selfies, 171-172
 - underwater subjects, 175-176
 - well-lit subjects, 173
- Suction Cup Mount, 94
- Superview resolution, 192
- Surfboard Mount, 95
- surroundings, framing photos with, 185
- swipes. *See* finger swipes
- switching shooting modes, 153-162
 - directly from camera, 154-156, 210-213
 - from GoPro Mobile App, 160-162, 215-218
 - from LCD Touch BacPac, 157-158, 213-215
- Smart Remote, 215
- Smart Remote Touch BacPac, 159
- when recording video, 209-218
- system requirements (GoPro Studio), 326
- tagging photos/video, 200-201, 267, 354-355
 - hashtags, 365-367
 - YouTube videos, 379
- taking photos. *See* shooting photos
- taps. *See* finger taps
- TecDiveGear.com, 230
- televisions
 - 4K resolution compatibility, 9
 - connecting camera to, 33
- Temperature icon, 281
- templates, Edit Templates, 332-333, 340
- tethers, attaching, 86
- text in edited video, 348-349
- third-party housings, 77
- third-party mounts, 96-99
- third-person perspective, 13, 169-170, 185-186
- Three-Way mount, 95
- Thumb Screw, 58, 77, 84
 - attaching housing to mount, 85-86
 - Tool Thumb Screw Wrench + Bottle Opener, 288-289
- Tiffen Steadicam Curve, 266-267, 288
- time, setting, 48, 238
- Time Lapse Shooting Mode, 148, 202-205, 237
- timing, importance of, 168
- titles in edited video, 348-349
- toggling Shooting Mode options, 38
- Tool Thumb Screw Wrench + Bottle Opener, 288-289
- top of camera, 34-35
- Touch Backdoor, 18, 254
- Touch BacPac. *See* LCD Touch BacPac
- Touch Display On/Off option (LDC Touch BacPac), 242

transferring

- memory card content, 280
- photos with GoPro Mobile App, 309-313
- raw video content to computer, 335-337
- video with GoPro Mobile App, 309-313

trimming video clips, 336

Tripod Mount, 81, 95

tripods, 87

troubleshooting

- choppy video playback, 282
- common photo/video problems, 286-293
 - blurry low-light images*, 289
 - dull colors*, 290-291
 - fish-eye effect*, 289-290
 - memory card fills too fast*, 291
 - mount will not stay positioned*, 288-289
 - overexposed images*, 286-288
 - poor audio quality*, 292-293
 - recovering deleted files*, 291-292
 - replacing full memory card*, 292
 - wind noise*, 293
- damaged camera, 284-285
- dead battery, 272-274
- File Repair icon, 281
- flashing blue Status Lights, 283
- lens fog, 278
- memory cards, 129, 280
- menus do not match book photos, 283-284
- overheated camera, 49, 193, 281
- Power/Mode button, 30
- resetting camera name and password, 279
- unrecognized camera, 284
- unresponsive camera, 243, 274-276
- video playback in GoPro Mobile App, 282-283

water spots on housing, 282

wireless connections, 276-277, 302

Tumblr, 375

turning on/off

- LCD Touch BacPac, 114
- Sound Indicator alerts, 44
- Status Lights, 44
- Wireless mode, 109, 277, 283, 306

tweets, 364

Twitter

- hashtags, 365-367
- privacy issues, 370
- sharing photos/video, 364-370
 - via Photos app*, 368-370
 - via Twitter app*, 366-368
- tweets, 364

U

UHS-1 rating (memory cards), 120-121

Ultra HD video, 7

Ultra Wide FOV (Field of View) option, 260

underwater subjects

- recording video, 230
- shooting photos of, 175-176

unlocking LCD Touch BacPac touchscreen, 114

unrecognized camera, troubleshooting, 284

unresponsive camera, troubleshooting, 243, 274-276

updating

- Camera Software, 12, 284, 309
- operating system (OS), 50-55
 - manual updates*, 54-55
 - with GoPro Mobile App*, 51-52
 - with GoPro Studio software*, 52-53

upgrades to GoPro cameras, 14

upside-down camera, recording video, 263

USB connections, 284
 USB cable, 33-35
 USB port, 32
 Use Cellular Data option (App Settings menu), 309
 user interfaces (LCD Status Screen), 39-40
 user manual (GoPro Studio software), 328
 Use with Current Wi-Fi Remote option, 241
 Use with Smart Remote option, 241

V

Vented Helmet Strap Mount, 95
 Version option, 240, 308
 vibration, movement versus, 92
 video
 editing. *See also* GoPro Studio software
 3-D video, 268
 adding audio, 224
 adding music and sound effects, 228-230
 apps for, 322
 converting clips, 338-339
 creating new project, 337
 during recording, 347
 Edit Templates, 332-333, 340
 enhancing video, 345
 GoPro Studio software, 191
 multiple perspectives, 264
 photos in, 337
 previewing video, 344
 saving work in progress, 332-333
 selecting clips, 338-339
 software for, 349-350
 sound, 346
 special effects, 343-344
 steps in, 328-329, 340-344
 storyboards, 329
 system requirements, 326
 tips for, 347-349

transferring raw content to computer, 335-337
 trimming clips, 336
 video editor's role, 327
 exporting, 334, 342, 346-347
 playing, 116
 recording, 189
 in 3-D, 268
 Auto Low Light option, 194-195
 avoiding shakiness, 252, 265-267
 battery life, 193
 built-in microphone usage, 222-225
 choosing housings and mounts, 253-256
 choosing resolution, 256-259
 choosing shooting mode settings, 194-196
 Color settings, 207
 creative inspiration for, 293-295
 Default shooting mode, 196
 editing during, 347
 equipment, 253-256
 EV Comp settings, 208
 external lighting, 230-233
 external microphone usage, 225-228
 features available by camera model, 192-193
 FOV (Field of View) options, 259-261
 FPS (Frames Per Second) rate, 259
 goals of, 191
 ISO Limit settings, 207-208
 lighting, 264-265
 Looping Video shooting mode, 199-200
 multiple perspectives, 268
 order of shots, 253
 Orientation Up/Down option, 210
 overheated camera, 193
 perspective, 261-264
 preparation for, 252-253
 Protune option, 205-207, 218
 QuikCapture feature, 209, 237

- resolution choices, 190*
- as separate files, 200*
- Sharpness settings, 208*
- shooting modes available, 190*
- simultaneously with photos, 144, 198-199*
- Superview resolution, 192*
- switching shooting modes, 209-218*
- tagging shots, 200-201, 267*
- Time Lapse Video shooting mode, 202-205*
- troubleshooting common problems, 286-293*
- upside-down camera, 263*
- Video+Photo shooting mode, 198-199*
- Video shooting mode, 196-198*
- White Balance settings, 207*
- rotating, 236
- sharing
 - via cloud-based services, 357-359*
 - via email, 355-357*
 - export options, 346-347*
 - via Facebook, 361-364*
 - via GoPro Channel, 380-384*
 - via Instagram, 364-365, 371-374*
 - via Pinterest, 375*
 - privacy issues, 354-355*
 - via SnapChat, 375*
 - via social media, 359-375*
 - suggestions for, 385*
 - via Tumblr, 375*
 - via Twitter, 364-370*
 - via Vine, 380*
 - via YouTube, 375-380*
- transferring with GoPro Mobile App, 309-313
- viewing
 - GoPro Channel, 320*
 - in GoPro Mobile App, 282-283*
 - from GoPro users, 294*
- On Screen Display (OSD) option, 238*
- troubleshooting choppy playback, 282*
- troubleshooting shaky playback, 288*
- Video Format option, 237*
- video editors, role of, 327
- Video Format option, 237
- VideoLighting.com lighting kits, 233
- Video option (LCD Status Screen), 38, 41
- Video+Photo shooting mode, 198-199
- Video Settings options (GoPro Mobile App), 316
- Video shooting mode, 196-198
- Videoshop Video Editor, 350
- viewfinder. *See* LCD Touch BacPac
- viewing
 - GoPro Channel, 320*
 - memory card capacity, 241*
 - photos*
 - GoPro Channel, 320*
 - with GoPro Mobile App, 309-310*
 - in My GoPro Album, 320*
 - LCD Touch BacPac, 116*
 - On Screen Display (OSD) option, 238*
 - remaining memory card capacity, 122*
- video
 - GoPro Channel, 320*
 - in GoPro Mobile App, 282-283*
 - from GoPro users, 294*
 - On Screen Display (OSD) option, 238*
 - troubleshooting choppy playback, 282*
 - troubleshooting shaky playback, 288*
 - Video Format option, 237*
- Vine, 380

W-X-Y-Z

- Wall Charger, 35, 132
- wallpaper, 385
- warranty information, 285
- Wasabi Power, 135-136

- waterproof housings, 78
- waterproofing, 222-223, 278
- water spots on housing, cleaning, 282
- well-lit subjects, shooting photos of, 173
- White Balance settings, 151, 207
- Wide Field of View
 - amount captured, 167
 - choosing resolution, 179
 - for buildings, 174-175
- Wide FOV (Field of View) option, 260
- Wi-Fi
 - GoPro Mobile App connections, 298, 301-306
 - Wi-Fi/Bluetooth status light, 43
 - Wi-Fi On/Off button, 34
 - Wi-Fi Remote. *See* Smart Remote
- wind noise
 - avoiding, 227
 - troubleshooting, 293
- Windows devices, GoPro Mobile App on, 50
- Windows Store, 298
- wind screens for external microphones, 293
- wired content transfer, 33
- wireless connections, 23
 - initial camera setup, 46
 - troubleshooting, 276-277, 302
 - unrecognized camera, 284
 - Use with Current Wi-Fi Remote option, 241
 - Use with Smart Remote option, 109, 241
- wireless content transfer, 33
- Wireless Control Settings options (GoPro Mobile App), 319
- Wireless mode
 - resetting camera name and password, 279
 - turning on/off, 109, 277, 283, 306
- wireless range
 - GoPro mobile app, 109
 - Smart Remote, 102
- Wireless Status light, 29
- Wondershare Video Editor, 349
- Worth Ave. Group, 285
- Wrist Mount, 96
- write speed (memory cards), 120
- WVGA resolution, 257
- YouTube, 229
 - advertising on, 377
 - GoPro videos on, 295
 - privacy settings, 376, 379
 - sharing video, 375-380
 - shooting tips, 88
 - YouTube Channel, 376
 - YouTube Channel Video Manager, 380
 - YouTube Support webpage, 379