



Your Short Cut to Knowledge

The following is an excerpt from a Short Cut published by one of the Pearson Education imprints.

Short Cuts are short, concise, PDF documents designed specifically for busy technical professionals like you.

We've provided this excerpt to help you review the product before you purchase. Please note, the hyperlinks contained within this excerpt have been deactivated.

**Tap into learning—NOW!**

Visit [www.informit.com/shortcuts](http://www.informit.com/shortcuts) for a complete list of Short Cuts.



**SAMS**

**Cisco Press**

**IBM  
Press™**

**que®**

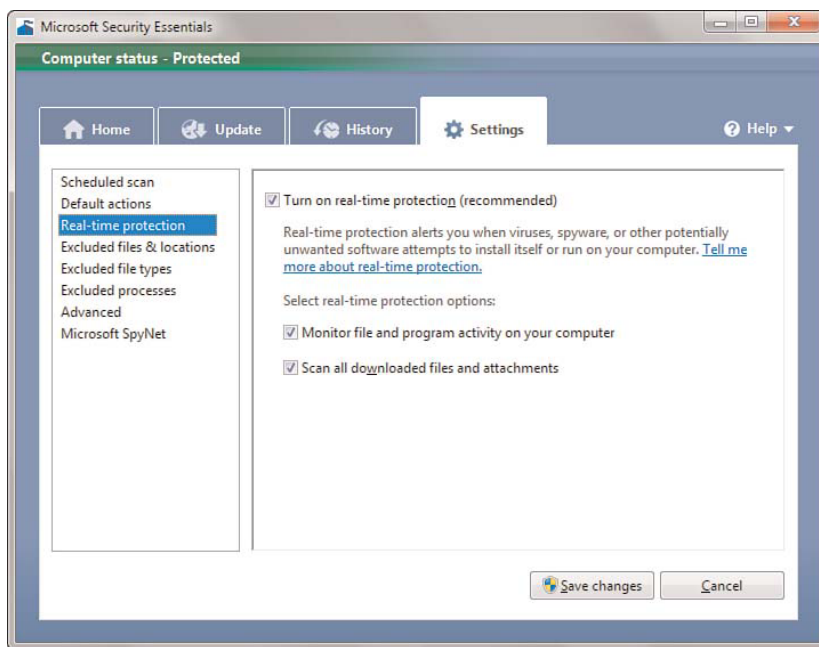
## Using Real-Time Protection

For optimal defense against any malware you may inadvertently introduce to your system, you want to enable MSE's real-time protection. With this feature activated, MSE continually scans your system in real-time whenever you download or save a new file to your computer.

Real-time protection is activated by default. To check the settings, disable, or re-enable this feature, follow these steps:

1. Click the Settings tab.
2. Select Real-Time Protection from the tasks pane on the left, as shown in Figure 6.

**FIGURE 6**  
Enabling MSE's real-time protection.



3. Check the Turn On Real-Time Protection option.
4. Check the Monitor File and Program Activity on Your Computer option.
5. Check the Scan All Downloaded Files and Attachments option.
6. Click the Save Changes button.

About those last two options. In most instances, you want MSE to scan everything you're doing, especially those files and attachments you download to your PC. However, if your machine doesn't have sufficient processing power, these actions can significantly affect your computer's performance. If you find that running MSE with real-time protection is slowing things down to an unacceptable level, return to this setting and *uncheck* the Monitor File and Program Activity on Your Computer and Scan All Downloaded Files and Attachments options.

## Excluding Locations, File Types, and Processes

Here's something else you can configure if you find MSE unduly slowing down your PC. By default, MSE scans all the files and folders on your system when doing a complete scan and when performing real-time scanning. If you have a big hard disk that's fairly well filled up, this can add a lot of time to the scan—or slow down your system during real-time scanning. You can speed things up by *excluding* certain locations, file types, and processes from the scan; the less there is to scan, the faster the scan will be.

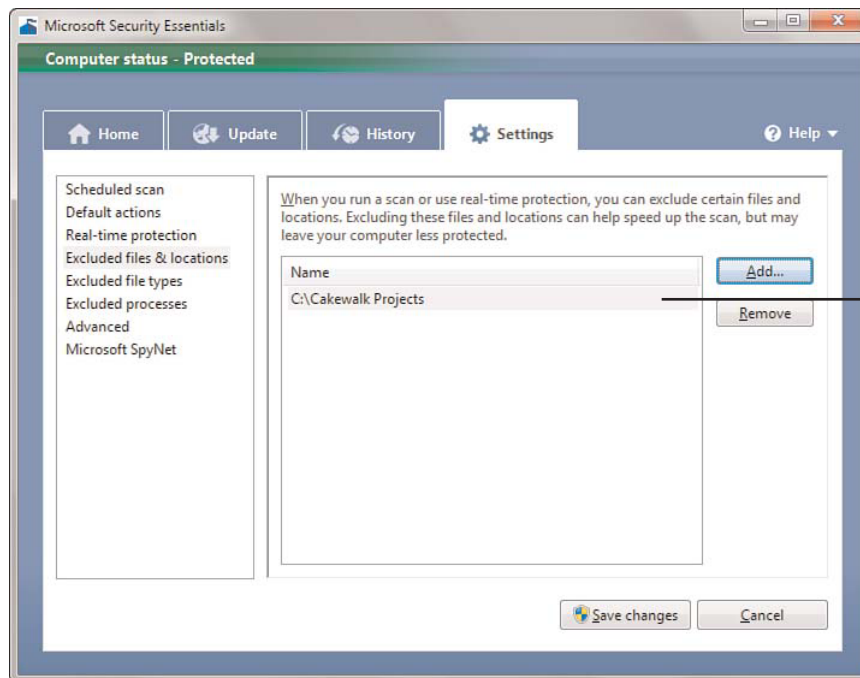
You can opt to exclude specific locations, file types, and system processes from the scan. We'll deal with each type of exclusion separately.

## Excluding Locations

If you have specific folders that you know don't contain malware (for example, archived photos or music tracks), you can exclude these locations from MSE's scans. To specify which locations (drives, folders, or subfolders) to exclude, follow these steps:

1. Click the Settings tab.
2. Select Excluded Files & Locations from the tasks pane on the left, as shown in Figure 7.

**FIGURE 7**  
Excluding locations from the scans.



This folder will be excluded from the scan.