



SPECIAL EDITION

USING®

Microsoft®

Expression® Web 2

THE ONLY **EXPRESSION WEB 2** BOOK YOU NEED

que®

Jim Cheshire

SPECIAL EDITION USING® MICROSOFT® EXPRESSION® WEB 2

Copyright © 2008 by Que Publishing

All rights reserved. No part of this book shall be reproduced, stored in a retrieval system, or transmitted by any means, electronic, mechanical, photocopying, recording, or otherwise, without written permission from the publisher. No patent liability is assumed with respect to the use of the information contained herein. Although every precaution has been taken in the preparation of this book, the publisher and author assume no responsibility for errors or omissions. Nor is any liability assumed for damages resulting from the use of the information contained herein.

ISBN-13: 978-0-7897-3784-7

ISBN-10: 0-7897-3784-1

Library of Congress Cataloging-in-Publication Data is on file.

Printed in the United States of America

First Printing: March 2008

Trademarks

All terms mentioned in this book that are known to be trademarks or service marks have been appropriately capitalized. Que Publishing cannot attest to the accuracy of this information. Use of a term in this book should not be regarded as affecting the validity of any trademark or service mark.

Microsoft and Expression are registered trademarks of Microsoft Corporation.

Warning and Disclaimer

Every effort has been made to make this book as complete and as accurate as possible, but no warranty or fitness is implied. The information provided is on an “as is” basis. The author and the publisher shall have neither liability nor responsibility to any person or entity with respect to any loss or damages arising from the information contained in this book or from the use of the CD or programs accompanying it.

Bulk Sales

Que Publishing offers excellent discounts on this book when ordered in quantity for bulk purchases or special sales. For more information, please contact

U.S. Corporate and Government Sales

1-800-382-3419

corpsales@pearsontechgroup.com

For sales outside the United States, please contact

International Sales

international@pearson.com



This Book Is Safari Enabled

The Safari® Enabled icon on the cover of your favorite technology book means the book is available through Safari Bookshelf. When you buy this book, you get free access to the online edition for 45 days.

Safari Bookshelf is an electronic reference library that lets you easily search thousands of technical books, find code samples, download chapters, and access technical information whenever and wherever you need it.

To gain 45-day Safari Enabled access to this book:

- Go to <http://www.informit.com/onlineedition>
- Complete the brief registration form
- Enter the coupon code SMR4-5PYQ-AEER-WXQU-H2MU

If you have difficulty registering on Safari Bookshelf or accessing the online edition, please email customer-service@safaribooksonline.com.

Associate Publisher

Greg Wiegand

Acquisitions Editor

Loretta Yates

Development Editor

Laura Norman

Managing Editor

Patrick Kanouse

Project Editor

Tonya Simpson

Indexer

Ken Johnson

Technical Editor

Jennifer Kettell

Publishing Coordinator

Cindy Teeters

Multimedia Developer

Dan Scherf

Book Designer

Anne Jones

INTRODUCTION



WHO SHOULD READ THIS BOOK?

Expression Web 2 is a powerful Web development product, and there are plenty of books about it. That puts readers in a tight spot when trying to figure out which book to purchase to learn how to use Expression Web 2 to its fullest. I've read a lot of technical books in my career, and the ones that I find most helpful are the ones that teach me everything about a particular product instead of only teaching me the features and techniques that the author prefers. If that's the kind of book you appreciate, then this is the book for you.

I have also found that many technical books are frustratingly light on any meaningful content. In fact, most of them are just complex rewrites of the documentation that ships with the product. I get the documentation with the product, and I'd rather not pay for it again from a third party. Instead, I want a book that tells me what the documentation *doesn't* tell me.

That's exactly what this book will do. It will show you how to use the features in Expression Web 2 for *real-world* Web design. I'll give you pointers on how to effectively use several features together to achieve a common goal. I'll give you a strong foundation in the technologies involved (for example, Cascading Style Sheets [CSS], Extensible Hypertext Markup Language [XHTML], ASP.NET, PHP, and more) so you aren't working in a vacuum.

When the first edition of this book was released, I read plenty of quotes from people saying that, because it is comprehensive and covers all features in Expression Web, it was best for advanced users. I agree that this book is a great resource for advanced users, but it also is great for users new to Expression Web 2. If you want a book that will continue to provide you with valuable information as your knowledge of Expression Web 2 and Web design grows, this book is a great choice for you.

The goal of this book is to equip you to be a better Web designer using Expression Web 2 as one of the tools in your arsenal. If that sounds like something you're interested in, keep reading!

WHY USE EXPRESSION WEB 2?

Ask any professional Web designer what features are important for a Web design application and he or she will tell you that it must adhere to current Web standards and make creating and maintaining a standards-driven Web site easy. Not only that, but a solid Web design tool should be created from the ground up to support ASP.NET and PHP from a designer's perspective. Expression Web 2 meets all those needs.

You'll not only be able to create dynamic, standards-compliant Web sites with Expression Web 2, but you'll be able to do so in a way that allows you to take advantage of your creativity. It doesn't drag you down with complex dialogs and frustrating code changes. After using Expression Web 2 for a while, you'll never consider going back to your previous Web design tool.

HOW THIS BOOK IS ORGANIZED

This book is broken up into multiple sections so you can quickly find the information you need. Here is the rundown on all the sections:

- **Part I, “An Overview of Expression Web 2”**—Part I comprises an overview of Expression Web 2. You'll receive a complete tour of the Expression Web 2 feature set, along with some tips and tricks on using the interface.
- **Part II, “Web Sites in Expression Web 2”**—The chapters in this section teach you how to work with Web sites in Expression Web 2. You'll learn about creating sites, publishing sites, managing sites, and working with other site-related features.
- **Part III, “Creating and Editing Web Content”**—In this section, you'll learn how to create Web pages and add content to them. I not only talk about adding and formatting text, but also how to add graphics and dynamic content. Finally, this section covers the details of how to take advantage of some of the great productivity features in Expression Web 2.
- **Part IV, “Using CSS in Expression Web 2”**—Instead of including CSS as an afterthought, I've dedicated two complete chapters to using this important design concept. You'll learn not only the details of CSS in general, but also how to use the powerful CSS tools in Expression Web 2.
- **Part V, “Optimizing Your Web Site”**—A good Web designer doesn't just slap pages together. It's important to make your site work well in all the major browsers, and it's also important to pay attention to accessibility issues. You'll learn about both in this section.
- **Part VI, “Scripting, DHTML, and Other Dynamic Content”**—In this section, you'll learn tricks to differentiate your Web site from the status quo. You'll learn how to add dynamic components automatically in Expression Web 2. You'll also learn how to read and write client-side JavaScript so you can understand what goes on under the covers when Expression Web 2 adds code to your page.

- **Part VII, “ASP.NET and PHP Development in Expression Web 2”**—Expression Web 2 fully supports Microsoft ASP.NET and provides some support for PHP. In this section, you’ll find out what ASP.NET gives you as a Web designer and how to use Expression Web 2 to create some pretty powerful site features, all without writing any code. You’ll also learn how to take advantage of the PHP support included in Expression Web 2.
- **Part VIII, “Accessing Data in Expression Web 2”**—Connecting a Web site to external data has become commonplace. In this section, you’ll discover how to easily design a data-driven Web site with ASP.NET and Expression Web 2.

I’ve also included three appendixes that cover using Expression Web 2 to make money on the Web with e-commerce solutions, my insights into the future of Web development, and a resource guide on Expression Web 2, Web design, ASP.NET, and PHP.

- Appendix A, “Taking Advantage of E-commerce”
- Appendix B, “The Future of Web Development”
- Appendix C, “Resources on Expression Web 2, Web Design, ASP.NET, and PHP”

SPECIAL ELEMENTS

Throughout the book, you’ll find some special elements that are designed to make it easy to locate important information or special tips to help you get the most out of Expression Web 2.

When an important term is used for the first time, it is printed in *italics* and defined close by. When instructions require you to enter text or values into a dialog, the data you are to enter appears **bolded**. Finally, for those of you who find it faster to work without a mouse, hotkey indicators appear for all menu commands. Simply press Alt and the underlined character.

CROSS-REFERENCES

Nothing’s worse than a technical book that assumes you will read it from beginning to end like a novel. Most folks use technical books like reference materials, so this book makes generous use of cross-references.

If a feature is mentioned that is covered elsewhere in the book, there is a cross-reference directing you to where you can find details on that topic.

NOTES, TIPS, CAUTIONS, AND SIDEBARS

You’ll find numerous bits of information in these special elements.

NOTE

Notes include additional technical information or links to important information.

TIP

Tips provide information to make using a feature easier, or provide information you might not have considered.

CAUTION

Caution elements prevent you from shooting yourself in the foot. They point out problems so you can avoid them and save yourself time and possible headaches.

Read Sidebars for the Big Picture

You won't find sidebars in every chapter; they're designed to give you more insight into a particular topic. If you're the kind of person who wants to know all the details, you'll find sidebars extremely valuable.

TROUBLESHOOTING

The "Troubleshooting" section is where you can go when things don't quite work out right. Chances are you'll find the solution to your problem there.

I've included notes in the chapters to direct you to these sections.



This is what a Troubleshooting note looks like. Text here describes a possible problem and tells you where to look for the solution.

In keeping with the concept of this book as a reference book, it includes a complete table of all the troubleshooting topics from the entire book. You'll find this table after the Table of Contents at the front of the book.

LAGNIAPPE (lan yap') *n.*, a gift or bonus

I always include a special section at the end of each chapter that gives you some bonus material. I wanted this section to have a name with character—one that truly illustrates the purpose of the section. I chose *lagniappe* as the name of this section. Lagniappe is an American French word that refers to a special gift given out of gratitude by a merchant at the end of a transaction. I felt that lagniappe was the perfect name for this section because it truly denotes the intent. (Thanks, Dad, for the recommendation.)

I sincerely hope you enjoy this book and find it to be an invaluable resource as you build Web sites with Expression Web 2.

Thank you for purchasing this book, and I hope you enjoy reading it as much as I enjoyed writing it for you!

—Jim

PUBLISHING A WEB SITE

In this chapter

What Is Publishing?

Server Options for Publishing

Publishing Content

Troubleshooting

Lagniappe: Hosting Your Web Site

WHAT IS PUBLISHING?

The best Web site is worthless unless people can see it. You can be the cream of the Web designer crop, but if no one can access your site, it doesn't matter a bit. Therefore, you have two choices when it comes to designing a Web site with Expression Web 2: You can either design the site live on a Web server that hosts your domain, or you can create your site offline and then publish it to a live server.

Developing a site offline and then publishing it to a live server is always the preferred choice. If you develop directly against a live site, any problems you encounter while developing your site (and there will be some) will be visible to everyone who visits your site. You could, of course, put up one of those graphics that you see on many sites that say "Under Construction," but the way I see it, if a site is under construction, it should be on a development computer, not on a live Web server. After all, an artist doesn't paint a masterpiece while the canvas hangs on a museum wall. A professional Web developer will always develop a site offline and then publish it to the Internet or intranet.

Publishing is simply the process of copying Web content from one place to another. It might be content copied from one directory to another on the same machine, one Web site to another on the same machine, or from one machine to a different machine. You can also publish content to any of the numerous storage devices available today, such as a removable hard drive, a Universal Serial Bus (USB) key, or even a portable music player! If you can copy a file to a device or location, you can publish to it.

TIP

It might sound strange to publish a Web site to a portable music player, but it's actually a convenient way to carry copies of your Web site from place to place. I've got copies of several of my Web sites on my iPod, and it's been a great convenience to be able to access the files anytime I need them.

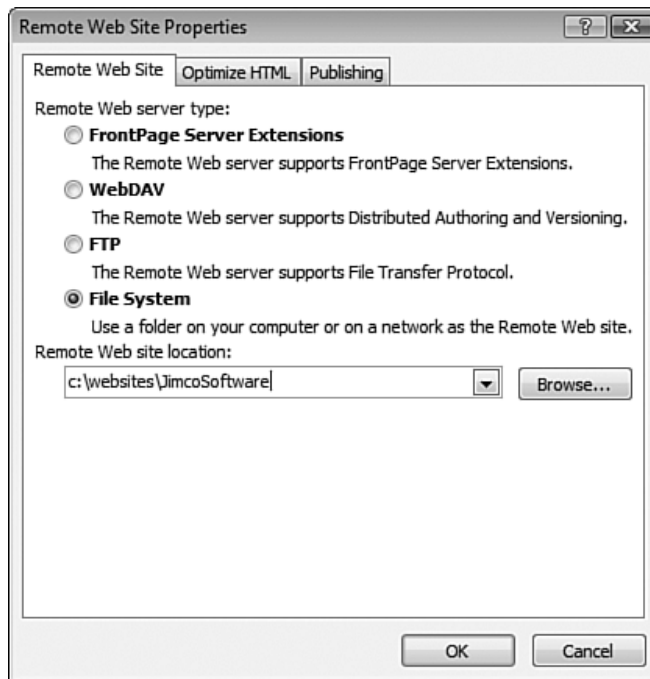
SERVER OPTIONS FOR PUBLISHING

As shown in Figure 3.1, Expression Web 2 offers many options for publishing content:

- FrontPage Server Extensions (via HTTP or HTTPS)
- WebDAV
- FTP
- File System

Figure 3.1

You'll choose from one of four different publishing options in the Remote Web Site Properties dialog.



One of these methods is sure to be suitable for your purposes. In fact, you'll likely have a choice between a couple of them, so you'll need to understand the pros and cons of each option to make an educated decision when the time comes to publish your site.

FRONTPAGE SERVER EXTENSIONS

The FrontPage Server Extensions are a set of files that is installed onto a Web server to add functionality to a Web site. The FrontPage Server Extensions have been around for many years. Perhaps the reason why they are so pervasive is that most hosting companies offer support for them.

NOTE

Microsoft still supports the FrontPage Server Extensions on Windows Server 2003. Microsoft also has engaged Ready to Run software to develop a version of the FrontPage Server Extensions for Windows Vista and Windows Server 2008, but the new version has not been released as of this writing.

When to Choose the FrontPage Server Extensions

There will be times when you won't have any choice but to use the FrontPage Server Extensions. If you can't connect to a remote server using one of the other connectivity methods provided by Expression Web 2, you'll have to use the FrontPage Server Extensions. You'll also need to use the FrontPage Server Extensions if you are using an Expression Web 2 Web component that requires FrontPage Server Extensions for functionality on the server.

Outside of those situations when you have no other choice, I recommend that you **do not** use the FrontPage Server Extensions. Although a version of the FrontPage Server Extensions is available for IIS 7, Microsoft does not develop it. It's likely that Microsoft will not provide security updates and bug fixes.

CAUTION

There are some Expression Web 2 Web components that rely on the FrontPage Server Extensions to operate. If you are using any of these components, you will need to choose the FrontPage Server Extensions option when publishing.

3

The FrontPage Server Extensions use either the HTTP or secure HTTP (HTTPS) protocol to publish site content. These same protocols are used when browsing Web sites. Because the FrontPage Server Extensions use the same protocols as your Web browser, they can easily publish to remote servers even if you are behind a firewall. Almost all firewalls are configured to allow HTTP and HTTPS traffic to freely pass through. The FrontPage Server Extensions take advantage of that fact when publishing content.



If you are prompted multiple times for a username and password when publishing with the FrontPage Server Extensions, see "Username and Password Not Accepted" in the "Troubleshooting" section of this chapter.

The Remote Web Site Properties dialog shown in Figure 3.2 displays the options available when choosing to publish a Web site using the FrontPage Server Extensions.

After the FrontPage Server Extensions have been installed on the Web server, they must be configured for your Web site by an administrator of the Web server. During the configuration process, the FrontPage Server Extensions add folders to your Web site that begin with _vti. These folders contain configuration information that the FrontPage Server Extensions use to keep track of changes to your Web site.

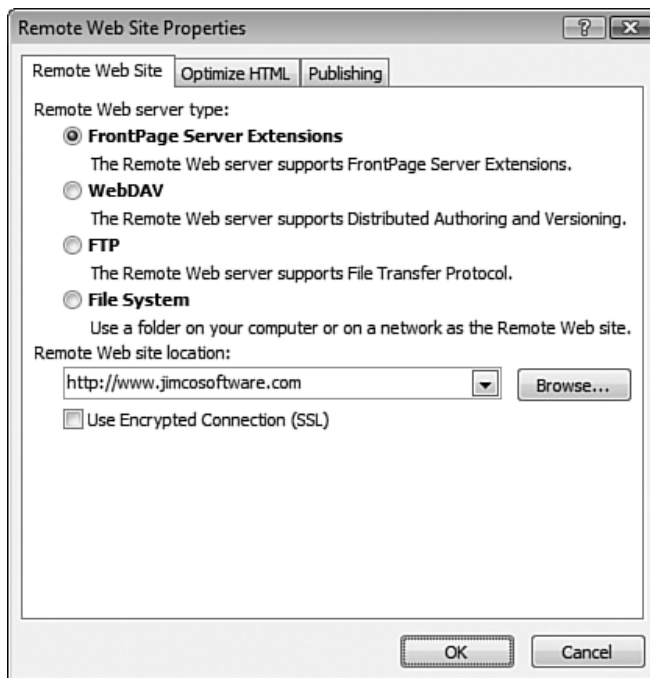
NOTE

"VTI" stands for Vermeer Technologies Incorporated, the company from which Microsoft purchased the first version of FrontPage. Ironically, references to that original company still remain in Microsoft products even after the discontinuation of FrontPage.

The FrontPage Server Extensions offer functionality at both design time and runtime. In addition to offering the ability to connect to remote Web sites and publish content, they also provide components that generate HTML and client script while you are developing the site, as well as components that provide special functionality when the Web site is browsed.

Figure 3.2

The FrontPage Server Extensions options allow you to specify a URL using HTTP. If you require a secured connection, SSL is also available.

**CAUTION**

The FrontPage Server Extensions are notorious for causing configuration abnormalities on a system to surface, particularly in the area of Registry permissions. If you get errors when installing or configuring the FrontPage Server Extensions, be very cautious when troubleshooting them.

As I was writing this chapter, I had to restore my machine from a disk image on numerous occasions due to problems caused by the FrontPage Server Extensions. Because I had never experienced a problem like this in the past, I suspect that Windows security updates over the past year or so conflicted somehow with the FrontPage Server Extensions.

To publish with the FrontPage Server Extensions, you will need to have the FrontPage Server Extensions installed on the remote Web site. It is not necessary to install the FrontPage Server Extensions on the local Web site.



If you get an error telling you that the FrontPage Server Extensions are not installed when publishing, see "FrontPage Server Extensions Aren't Installed" in the "Troubleshooting" section of this chapter.

When you publish with FrontPage Server Extensions, you will usually publish to the same address that you would use when browsing the remote Web site in your Web browser. For example, if I were publishing a local copy of my Web site from `c:\WebSites\JimcoSoftware` to my public Web site using the FrontPage Server Extensions, I would enter a destination address of `http://www.jimcosoftware.com`.

WebDAV

WebDAV is really just an extension of the HTTP protocol, and therefore shares many of the same benefits offered by the FrontPage Server Extensions. In fact, the options available in the dialog for publishing a Web site in Expression Web 2 via WebDAV are identical to those available when publishing using the FrontPage Server Extensions.

There are many benefits to using WebDAV:

- Firewalls generally are not an issue because WebDAV extends HTTP, the protocol used when browsing the Web.
- WebDAV supports strong authentication so you can ensure the security of your data.
- WebDAV supports encryption for another layer of protection for your data.
- WebDAV includes support for file versioning and resource locking so that one user won't overwrite another user's work.

WebDAV is already a part of your operating system. In fact, when you create a shortcut to an HTTP location in My Network Places, Windows uses WebDAV to create that link if the FrontPage Server Extensions are not installed on the remote server.

NOTE

Many people in the technical community seriously believe that WebDAV will eventually replace all the publishing protocols in wide use today. In fact, Microsoft has released a WebDAV authoring extension for IIS 7 that works perfectly with Expression Web 2.

To use WebDAV to publish your Expression Web 2 Web site, your hosting company or system administrator must provide support for WebDAV. I have had great success using WebDAV on IIS 7 and Expression Web 2, but Microsoft's implementation of WebDAV isn't complete. Even so, you can open a remote Web site and publish your Web site using Microsoft's implementation of WebDAV and Expression Web 2.



If you are publishing with WebDAV and you receive an error saying that the FrontPage Server Extensions are not installed, see "FrontPage Server Extensions Are Used Instead of WebDAV" in the "Troubleshooting" section of this chapter.

FTP

FTP has been around a long time and is widely used by many Web developers for transferring Web content. In fact, the first FTP standard appeared in 1971, long before the advent of the World Wide Web.

FTP is generally not secured. That means it's possible for someone to intercept your username and password. There are actually several options available for secure FTP. However, Expression Web 2 does not support any of these methods. If you want to use secure FTP, you'll need to use a third-party FTP client.

NOTE

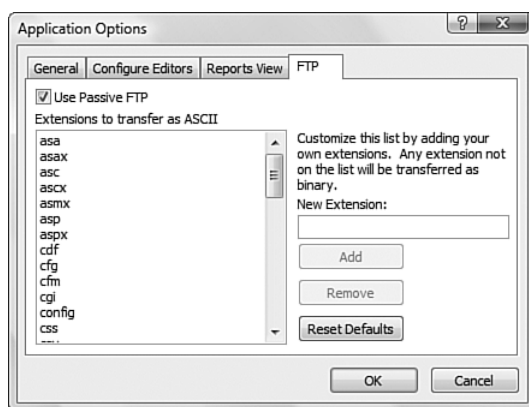
As mentioned in Chapter 1, Microsoft plans to support secure FTP in the next version of Expression Web.

FTP is a reliable method of transferring files between computers. However, there are some things to keep in mind when using FTP. There are two types of FTP connections: passive FTP and *active* FTP. If you experience trouble when using FTP (especially when publishing through a firewall), enabling passive FTP usually will resolve the issue.

To enable passive FTP in Expression Web 2, select Tools, Application Options and check the Use Passive FTP check box on the FTP tab, as shown in Figure 3.3.

Figure 3.3

Expression Web 2 supports both passive and active FTP. One of the two will work fine in almost all cases.



If you publish content using FTP but the content doesn't show up on the remote Web site, see "Content Missing after Publishing" in the "Troubleshooting" section of this chapter.

FILE SYSTEM

The File System method of publishing is used most often in situations where both the local and remote locations are on the same network. For this method to work, you must have a connection to the remote server that allows for access via a UNC (Universal Naming Convention) path.

A UNC path consists of a server name and a share name using the syntax `\\server\share`. It's also possible to set up a mapped drive so you can refer to a UNC share using a drive letter. UNC paths and mapped drives use the same underlying architecture.

CAUTION

Mapped drives are user-specific. If you log in to a computer and map a drive, other users who log in to that computer will not see that mapped drive.

If you map a drive with the intention of allowing other users of the same computer to publish to the mapped drive, keep in mind that you will need to map the drive for each user individually.

PUBLISHING CONTENT

Now that you have a rundown of all the methods available when publishing a Web site in Expression Web 2, let's look at how to publish content to a Web site.

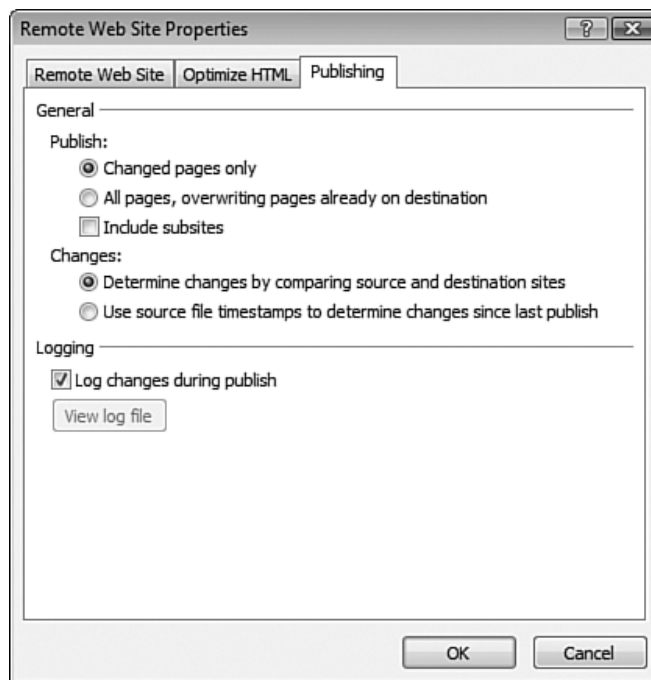
CONFIGURING PUBLISH OPTIONS

After you've opened the Web site you want to publish, select File, Publish Site to display the Remote Web Site Properties dialog. You'll then need to select the method you'll use for publishing and enter the location for the remote Web site.

If you'd like to review or change the options for publishing your Web site, click the Publishing tab. As shown in Figure 3.4, you can choose to publish only those files that have changed since the last publish, or you can choose to publish all files.

Figure 3.4

Expression Web 2 lets you choose whether to publish everything or just those files that have changed since the last time you published.



By default, Expression Web 2 publishes only those pages that have changed since the last time you published. It uses one of two methods to determine which files need to be published:

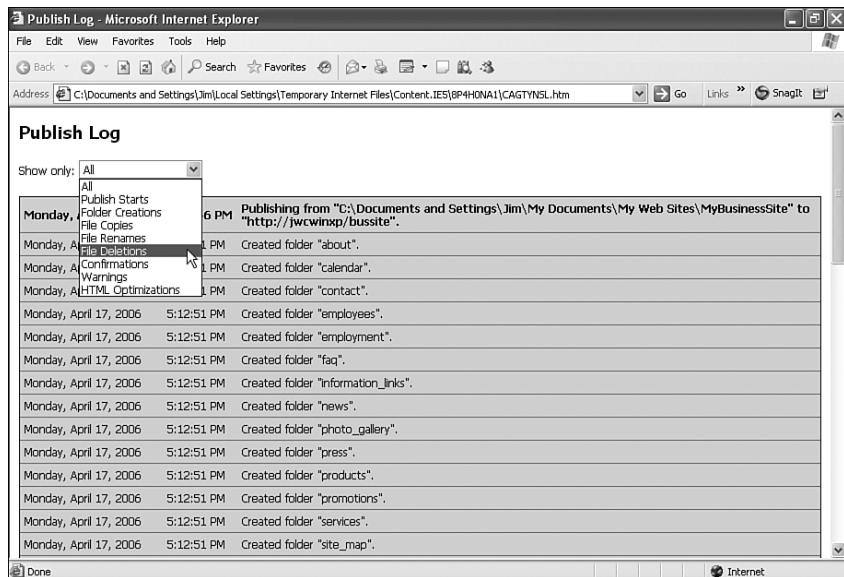
- **Determine changes by comparing source and destination sites**—By default, Expression Web 2 stores information on all the files in your Web site. If you choose this option, Expression Web 2 will use that information to determine what files need to be published.
- **Use source file timestamps to determine changes since last publish**—This method simply uses the timestamp on the files to determine what should be published. This method may not be as reliable as the first option.

Expression Web 2 also gives you the option of whether to include subsites. Even though Expression Web 2 will display subsites in the folder list of your Web site, it will only publish the main site by default. If you want to publish the main site and all the subsites, you'll need to check the Include Subsites check box.

➔ For more information on subsites, see “Web Sites and Subsites,” p. 29.

If you'd like Expression Web 2 to create a log of your publish operation, check the Log Changes During Publish check box. Expression Web 2 will then create an HTML file in your Temporary Internet Files folder, as shown in Figure 3.5. You can view this file by clicking View Your Publish Log File in the Copy Web Site view after you have published the Web site.

Figure 3.5
The Expression Web 2 publish log is easy to filter using the Show Only drop-down. If you'd like to keep the log, save it after publishing the site.



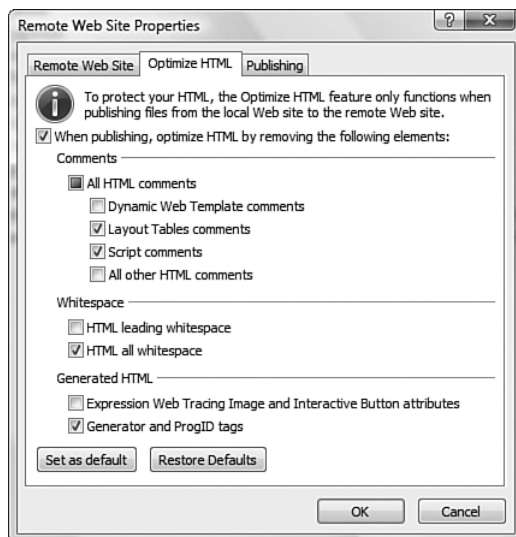
OPTIMIZING HTML DURING PUBLISHING

In addition to publishing your files, Expression Web 2 can also optimize your HTML. The main purpose of this feature is to remove code that may not be needed on the remote Web server.

You can configure what type of HTML optimization takes place using the Optimize HTML tab on the Remote Web Site Properties dialog, as shown in Figure 3.6.

Figure 3.6

Expression Web 2 can remove any unnecessary code so that your pages are as small as possible for better load times, but don't expect miraculous increases in speed with this feature.



There are many options available for HTML optimization:

- **All HTML Comments**—Removes all HTML comments in code. HTML comments are designated by the `<!--` and `<!-->` characters. The closing comment character may also simply be `-->`.
- **Dynamic Web Template Comments**—Expression Web 2 adds comments to pages that use Dynamic Web Templates so that editable regions can be identified. This option removes those comments.
- **Layout Tables and Cell Formatting Comments**—Expression Web 2 adds comments to layout tables and cells. This option removes those comments.
- **Script Comments**—This option removes comments added to client-side scripts.
- **All Other HTML Comments**—This option removes comments that are not covered in any of the previous categories.
- **HTML Leading Whitespace**—Removes the leading whitespace from your lines of code.
- **HTML All Whitespace**—Removes all HTML whitespace, including whitespace between lines.

- **Expression Web Tracing Image and Interactive Button Attributes**—Removes attributes that are added for the purpose of tracing images and also removes interactive button attributes. These attributes are used only for editing purposes, so they aren't needed on live files.
- **Generator and ProgID Tags**—Removes the Generator and ProgID Meta tags that are added by Expression Web 2.

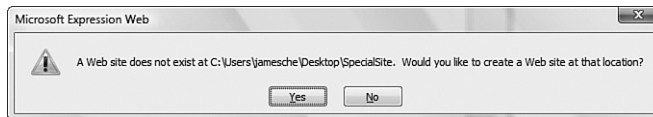


If you've made changes to the Optimize HTML settings and you notice no effect on your HTML code, see "HTML Optimization Doesn't Affect Web Files" in the "Troubleshooting" section of this chapter.

THE REMOTE WEB SITE VIEW

After you've configured all the publishing options for your Web site, click the OK button. If the remote Web site that you specify doesn't exist, Expression Web 2 will prompt you to create it, as shown in Figure 3.7. Expression Web 2 will create a Web site with an `images` folder and a `_private` folder. No other files or folders are created in the remote Web site until you publish files to it.

Figure 3.7
Expression Web 2 prompts you to create a new Web site if the remote Web site you specify doesn't exist.



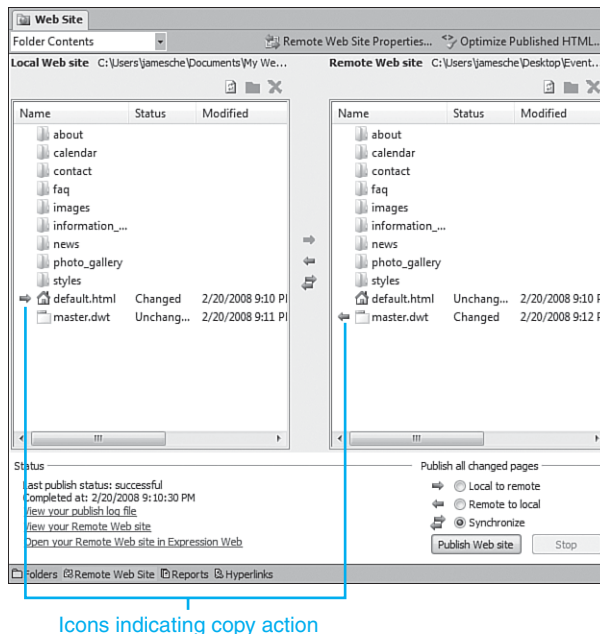
After the remote Web site has been created, the Remote Web Site view is activated, showing the local Web site on the left and the remote Web site on the right. From the Remote Web Site view, you can choose from one of three different publish settings:

- **Local to remote**—Files are copied from the local Web site on the left to the remote Web site on the right.
- **Remote to local**—Files are copied from the remote Web site on the right to the local Web site on the left.
- **Synchronize**—Changed files are synchronized between the two sites. This option is enabled only when the Changed Pages Only option is enabled in the Remote Web Site Properties dialog.

Expression Web 2 displays an icon next to pages in the Remote Web Site view to indicate what will happen when the Web site is published, as shown in Figure 3.8. These icons are not displayed for folders, but if you select a folder, Expression Web 2 will display the files within the folder along with appropriate icons indicating whether or not the files will be published.

Figure 3.8

Expression Web 2 displays arrows next to files that will be copied when the Web site is published. The direction of an arrow indicates the direction of the file copy that will take place on that particular file.



Icons indicating copy action

Because I have chosen the option to synchronize the Web sites, Figure 3.8 indicates that `default.htm` will be copied to the remote Web site and `master.dwt` will be copied to the local Web site when the site is published.

You can also use the arrow buttons that appear between the local Web site and remote Web site views to publish files and/or folders. If you'd like to copy just a few files (or just one), you can simply drag and drop them between the two views.

If your Web site consists of just a few files, it's pretty easy to tell which files will be published using the Remote Web Site view. However, as your Web site increases in size, it becomes more difficult to manage. If your Web site contains a lot of folders like the one shown in Figure 3.8, you're not going to be able to easily see what will happen when you publish. Fortunately, Expression Web 2 offers the ability to filter the Remote Web Site view using the View drop-down, as shown in Figure 3.9.

Confusing Web Site Terminology

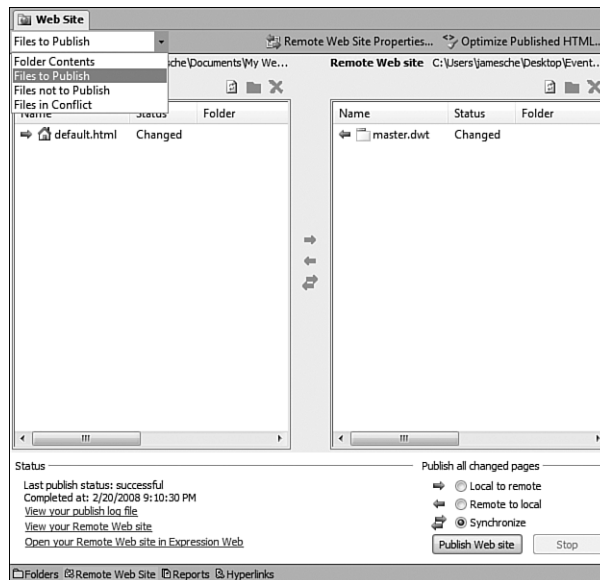
Expression Web 2 refers to the Web site open in Expression Web 2 as the local Web site; the Web site you are publishing to is called the remote Web site. However, the terms "local Web site" and "remote Web site" are misleading.

The local Web site isn't necessarily located on the local machine, nor is the remote Web site necessarily located on a remote machine. For example, if you are publishing your Web site from the Internet to your home computer, the local Web site would be located on a remote computer on the Internet, while the remote Web site would be your home computer.

Keep this in mind when working with your Web sites. Just remember that the Web site that is open in Expression Web 2 is always referred to as the local Web site and you should be fine.

Figure 3.9

You can quickly filter the Remote Web Site view using the View drop-down. In this case, I've decided to view all the files that will be published. Notice that Expression Web 2 does not display any folders in this view.



TROUBLESHOOTING HTTP PUBLISHING

Rule number 1 of publishing is this: If you're going to have a problem with a hosting company, it's going to happen when you are publishing your content. Most hosting companies do a great job of ensuring that people can always browse your site, but publishing is more complex and requires a more precise configuration.

The second rule of publishing is that most hosting companies will deny responsibility when it comes to publishing problems. That means you are going to have to do your own troubleshooting.

TIP

Many hosting companies that support the FrontPage Server Extensions for publishing will also blame them for problems while publishing. This is another reason for choosing FTP over the FrontPage Server Extensions if you can. FTP problems are uncommon, but if you do have them, almost all hosting companies are competent in troubleshooting them.

To troubleshoot publishing problems, you're going to need to install software that can capture information between your computer and the remote computer. The two tools I use for doing this are *Ethereal* and *Fiddler*, both of which are free tools and available for download on the Internet.

NOTE

We'll only cover HTTP publishing in this section. However, if you're using WebDAV or the FrontPage Server Extensions to publish, the information presented here will be helpful in troubleshooting any problems that might occur.

Ethereal (see Figure 3.10) is a network protocol analyzer. That's a fancy way of saying that it captures all traffic that flows to and from the network card on your computer. It features a great filter so that you can zero in on just the traffic you want to see. When dealing with Expression Web 2 publishing issues, you're going to be interested in HTTP or FTP traffic. Ethereal is available from www.ethereal.com.

NOTE

Ethereal is also called Wireshark.

NOTE

None of the techniques I discuss in this section will work if you are using SSL (HTTPS) because all traffic that flows over an SSL connection is encrypted. You'd be able to see the traffic, but you wouldn't be able to decipher it into anything meaningful.

The other tool I use is Fiddler (see Figure 3.11), which is an HTTP debugging proxy. That's a fancy way of saying that it logs all HTTP traffic on your machine. Fiddler has the added benefit of being able to log local traffic that doesn't travel over your network card. Fiddler is available from www.fiddlertool.com.

Figure 3.10

Ethereal is a very powerful network capture tool that is free and available via download from www.ethereal.com. Here I've captured the network traffic while opening a Web site using the FrontPage Server Extensions.

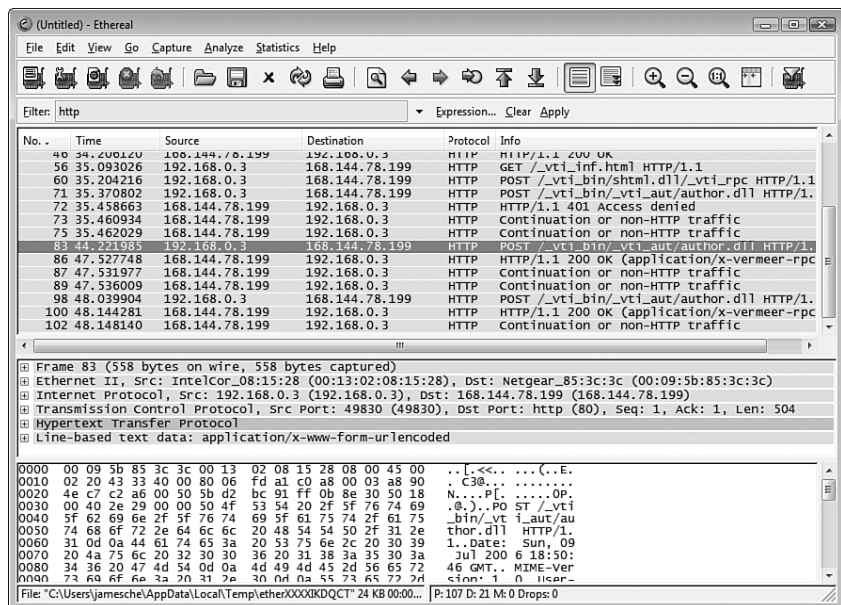
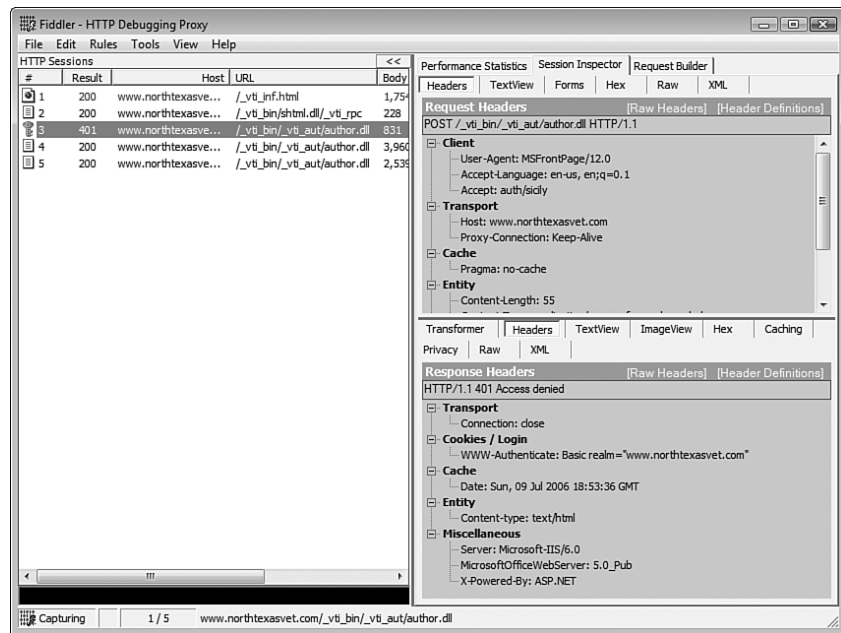


Figure 3.11
Fiddler targets HTTP traffic specifically. It's a great tool to use when troubleshooting publishing using HTTP.



HTTP AUTHENTICATION TRAFFIC

Most of the problems you'll encounter during publishing are authentication problems, meaning that the remote server doesn't accept your username and password. To troubleshoot this type of problem, you need to first understand what happens when things are working correctly.

To publish a Web site, you need to be able to write content to the remote Web site. For the Web server to verify that it should allow you to write to the content of the remote Web site, it needs to authenticate you. It does that by sending a 401 status code in response to your attempt to publish.

TIP

A 401 status code means that access was denied. You can see a full list of HTTP status codes at <http://support.microsoft.com/kb/318380/en-us>.

The client (in this case, Expression Web 2) responds to the 401 status code in one of two ways, depending on the type of authentication being used. You'll generally be using one of two authentication methods:

- **Windows Integrated Authentication**—Windows Integrated authentication is authentication that's built into Windows itself. If your Web server indicates that it can accept Windows Integrated authentication, Expression Web 2 will attempt to authenticate you

using the user logged on to your computer. If that fails, you'll be prompted for a username and password.

- **Basic Authentication**—Basic authentication will always prompt for a username and password.

Windows Integrated authentication uses encrypted data to authenticate you to the remote Web site. In fact, one of the benefits of Windows Integrated authentication is that it's a secure authentication mechanism. However, it was not designed to work on the Internet. In many cases, if your host is using Windows Integrated authentication, you'll be repeatedly prompted for a username and password and publishing will fail.

Basic authentication doesn't use encrypted credentials. Instead, your username and password are encoded using Base64 encoding before they are sent across the wire. *Base64* encoding is a common encoding method used to transmit data across networks. It was actually developed for sending binary data, but it works well for sending text as well.

TIP

In most cases, if Windows Integrated authentication fails, the Web server automatically tries basic authentication. Chances are you won't even know if or when this happens.

It's important to keep in mind that Base64 encoding provides nothing in the way of security. A quick Google search turns up scores of utilities for decoding Base64-encoded data. You shouldn't think of this as a flaw in the method used by basic authentication. It's actually the way it was designed to work.

NOTE

Windows Integrated authentication is naturally Windows-specific. Basic authentication, however, is used in non-Windows Web servers such as Apache.

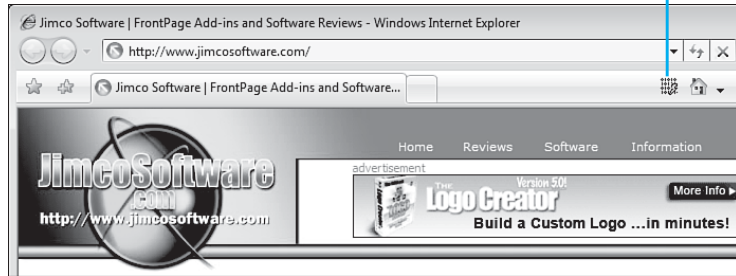
USING FIDDLER TO TROUBLESHOOT HTTP PUBLISHING ERRORS

Fiddler is a convenient tool to use for troubleshooting HTTP publishing because it targets only HTTP traffic. To start Fiddler, select it from the Start menu in Windows or use the Fiddler button in Internet Explorer, as shown in Figure 3.12.

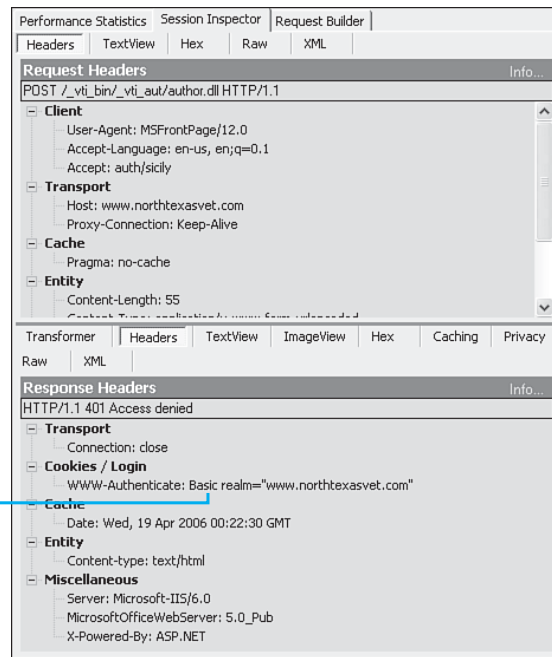
After you start Fiddler, it will begin capturing HTTP traffic, as shown previously in Figure 3.11. At the right side of the Fiddler interface, you can see different views of the data. By clicking the Session Inspector tab, you can view the local computer traffic in the top half of the display and the remote traffic in the bottom half. A series of buttons appears above both panels, allowing you to change the format of the data that is displayed. When troubleshooting publishing issues, it's probably most helpful to click the Headers button for both panes, as shown in Figure 3.13.

Figure 3.12

Fiddler installs a button into Internet Explorer so you can always access it quickly when you need it.

**Figure 3.13**

Fiddler can break local and remote traffic into two panes. In this case, you can see that the server is using basic authentication.



Using Basic
Authentication

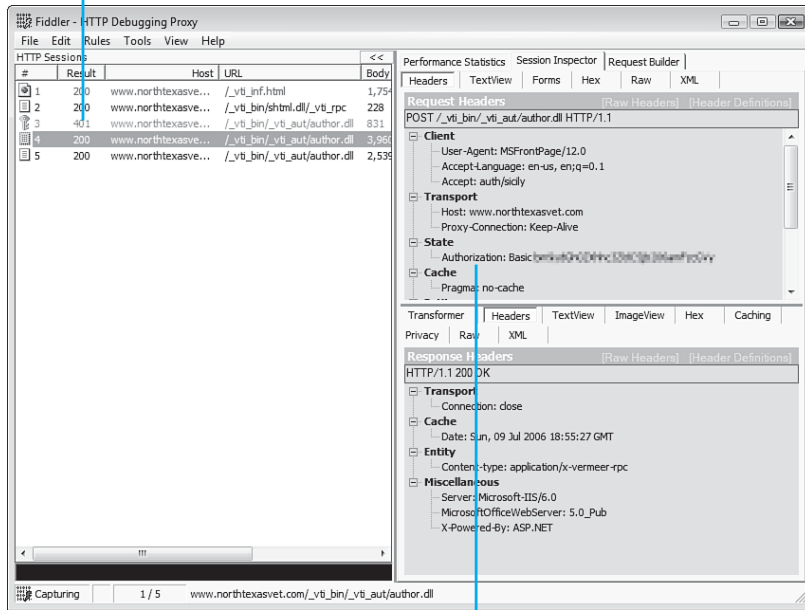
You can use the information that Fiddler provides to help in troubleshooting publishing issues by analyzing the authentication information. You want to look for the 401 status sent by the remote server and select the line just below it in Fiddler, as shown in Figure 3.14. You should then see your local machine respond with the authorization information.

If you see that you are not sending authorization information to the server, you've got a problem on your end. However, if you see that you are sending information to the server, you're either sending the wrong credentials or there's a problem somewhere other than on your end.

Figure 3.14

Fiddler clearly shows when you are sending authorization information to the remote server.

401 sent by remote server



Authorization information sent by local computer

USING ETHEREAL TO TROUBLESHOOT HTTP PUBLISHING ERRORS

Ethereal is a much more powerful tool than Fiddler because it will capture all network traffic on your computer. However, with that power comes additional complexity. For that reason alone, I usually choose Fiddler over Ethereal for simple troubleshooting, but you may find that Ethereal offers features that are useful to you.

TIP

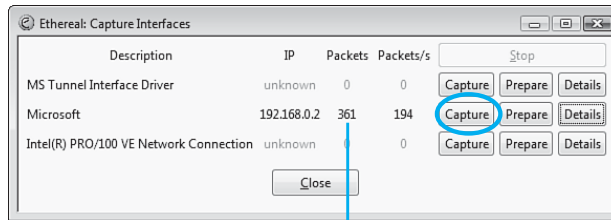
Because Ethereal captures all network traffic, it can also be used to troubleshoot FTP publishing. Fiddler only captures HTTP traffic and cannot aid in troubleshooting FTP.

To use Ethereal, select Capture, Interfaces to display a list of network interfaces that you can capture. Browse to any Web site and look for the interface that shows an increasing number of packets (as shown in Figure 3.15), and then click the Capture button.

After you've started the capture, begin your publishing in Expression Web 2. When you encounter a problem, switch back over to Ethereal and click the Stop button in the capture dialog, as shown in Figure 3.16.

Figure 3.15

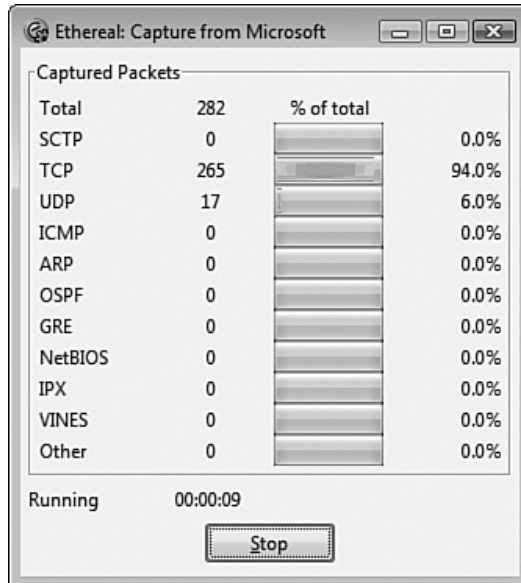
You will want to capture the interface that is connected to the Internet. Look for the interface with an increasing number of packets.



Number of packets

Figure 3.16

The capture dialog shows the packet statistics during a capture. Click the Stop button to end the capture process.



If Ethereal doesn't capture any network traffic, see "Ethereal Captures Nothing" in the "Troubleshooting" section of this chapter.

Ethereal captures all traffic on the network, so there's a good chance it will have captured a significant amount of data that is not related to your work in Expression Web 2.

Fortunately, you can filter the captured data easily by simply entering **http** in the Filter textbox, as shown in Figure 3.17.

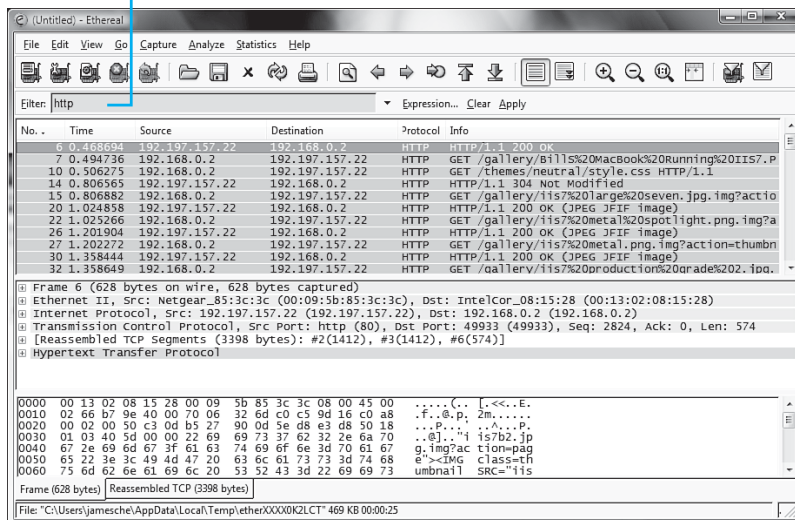
The data is collected in Ethereal in a similar format to the data collected in Fiddler. Once again, you want to look for Expression Web 2's response to the 401 status code sent by the Web server. (I've highlighted the 401 status code in Figure 3.17.)

Another powerful feature of Ethereal is its ability to display a conversation between Expression Web 2 and the remote Web server in a readable format. By right-clicking on any of the captured data and choosing Follow TCP Stream from the menu, Ethereal will display the entire conversation, as shown in Figure 3.18. You can even save this information and send it to your host to demonstrate the problem.

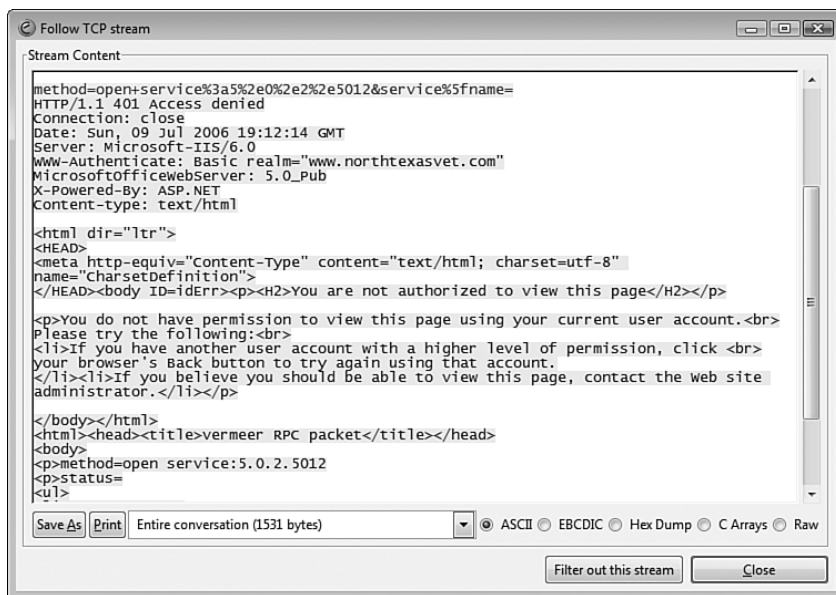
Figure 3.17

Filtering in Ethereal is a simple task using the Filter textbox.

The Filter textbox

**Figure 3.18**

An enormous benefit to Ethereal is its ability to display captured data as an entire conversation.



By using the data captures from Ethereal or Fiddler, you should have all you need to isolate publishing problems and possibly convince a stubborn host that the problem isn't on your end.

TROUBLESHOOTING

USERNAME AND PASSWORD NOT ACCEPTED

I'm publishing my site to my host and my username and password aren't being accepted. I know they're right and I know that my host has the FrontPage Server Extensions installed. What could be wrong?

The FrontPage Server Extensions recognize different levels of access to a site. If you are entering the correct information and publishing has never worked, it's possible that your host has not granted you proper permissions.

Contact your host and tell them to make sure you have permission to author against your Web site.

FRONTPAGE SERVER EXTENSIONS AREN'T INSTALLED

My host promises me that the FrontPage Server Extensions are installed, but when I try to publish, I keep getting a message telling me that the FrontPage Server Extensions aren't installed.

It's possible that the permissions on the remote Web site are not set correctly. This can prevent Expression Web 2 from being able to tell if the FrontPage Server Extensions are installed. If Expression Web 2 can't tell that the FrontPage Server Extensions are installed, it will assume that they aren't.

Use Ethereal or Fiddler and see what you can turn up. If you see something that looks out of the ordinary, send it to your host.

FRONTPAGE SERVER EXTENSIONS ARE USED INSTEAD OF WEBDAV

I'm publishing to my Web site using WebDAV, but I'm getting a message saying that the FrontPage Server Extensions aren't installed. Do I need the FrontPage Server Extensions to publish using WebDAV?

No. The FrontPage Server Extensions and WebDAV are mutually exclusive. That means that if the FrontPage Server Extensions are installed on the Web server, you can't publish using WebDAV. As soon as you try to publish using HTTP, the Web server will expect you to use the FrontPage Server Extensions.

If you are getting an error about the FrontPage Server Extensions when publishing via WebDAV, it indicates that the FrontPage Server Extensions are installed on the site and you cannot use WebDAV to publish. Contact your host and let them know that you want to remove the FrontPage Server Extensions and use WebDAV instead.

CONTENT MISSING AFTER PUBLISHING

I've published my content using FTP, but when I browse my Web site, nothing's there. Have I lost everything?

You haven't lost everything. Chances are you just uploaded information to the wrong directory. Your host has a specific directory that contains your Web site's files. Most of the time,

you are automatically placed into that directory when you log in. However, in some cases, you will need to specify the directory within Expression Web 2 in the FTP Directory text box.

Ask your host for the directory you should be using when publishing.

HTML OPTIMIZATION DOESN'T AFFECT WEB FILES

I've made some changes to the HTML Optimization feature in Expression Web 2, but when I check the code in my pages, nothing has changed.

Many of the comments and other special code that gets cleaned out as a function of HTML optimization are actually needed by Expression Web 2 while you are creating your pages. Therefore, Expression Web 2 will only optimize the HTML when you publish your Web site. The local files will remain unchanged.

ETHEREAL CAPTURES NOTHING

I'm trying to use Ethereal to capture network traffic on my wireless network card. It doesn't seem to be capturing anything at all. What could be wrong?

You should be able to capture against your wireless network card, but you might need to disable promiscuous mode.

In the Capture Interfaces dialog shown previously in Figure 3.15, click the Prepare button and then uncheck the Capture Packets in Promiscuous Mode check box in the Capture Options dialog.

LAGNIAPPE (lan yap') *n.*, a gift or bonus

HOSTING YOUR WEB SITE

One of the most commonly asked questions by many Web designers is one that might appear to be simple: "What should I consider when choosing a host for my Web site?" There are many options available for hosting, and most of them are more affordable than you might think.

First, outline your requirements. For example, are you going to need a database? If so, do you need a high-performance system like Microsoft SQL Server or a lower-level system? Most hosting companies offer support for SQL Server for a nominal monthly fee. However, if you don't need that kind of power, you can probably save some money by going with a file-based database such as Microsoft Access. You also may want to investigate using SQL Server 2005 Express Edition. It's a high-performance, file-based system that is available free from Microsoft, but keep in mind that some hosting companies do not support the Express Edition of SQL Server.

You'll also want to try and determine how much traffic you expect. Most hosting companies charge for a specific amount of bandwidth. After you surpass that bandwidth limit, you'll have to pay a premium for additional bandwidth. This is especially important if you plan on offering large files for download such as video or audio files.

Another important decision to make is whether to go with a hosting company that runs Windows servers. It seems to be all the rage these days to try and convince people to stay away from Windows Server. I encourage you to not fall for those who push their own agenda without any factual information. Make your decision based on the technology you want to use. If you want to use ASP.NET, you'll need to go with a host that runs Windows Server. If you want to use PHP, you have a choice of a Windows or non-Windows host.

NOTE

As of IIS 7 and the release of FastCGI, running PHP on a Windows server running IIS 7 provides application performance that is comparable to the performance that PHP enjoys on Apache Web servers.

If you just want to host a simple Web site without any fancy features and you do not expect a lot of traffic, you might want to consider hosting the site yourself. If you're a technology guru, you can get Linux and Apache running on a spare computer lying around the house and get good performance. Setting up Internet Information Services (IIS) on Windows Server is easier, but it will require a more powerful computer.

You can use Windows XP Professional or Windows Vista Home Premium Edition or better to host your own site, but both have a limitation on the number of connections that can be serviced. Keep in mind, too, that a single person browsing a site is going to be opening multiple connections. Chances are you will reach the connection limit at two or three people.

NOTE

Windows Vista also has a limited number of connections, but it's designed in such a way as to not generate errors when that limit is reached. Instead, it will allow the user to wait in a queue until a connection is available. Because of this, it's possible to host a fairly busy personal site on Windows Vista without any problems.

If you do choose to host your own site, you might want to invest in a router that has Dynamic Domain Name System (DNS) capability. (Most routers these days have this feature.) Dynamic DNS will allow you to configure a static host name (such as mySite.dyndns.org) that will always go to the IP address of your computer. Because most Internet service providers (ISPs) assign dynamic IP addresses, your IP address will change periodically. A router that supports Dynamic DNS can update a Dynamic DNS service (like www.dyndns.com) with your new IP address whenever it changes.

More information on Dynamic DNS is available at www.dyndns.com/services/dns/dyndns/. The service is free of charge and works great with most routers.

INDEX

SYMBOLS

- \ (escape) characters in regular expressions, 277
- { } (curly braces) in regular expressions, 281
- (dash) characters in regular expressions, 277
- <body> tags (Master Pages), 548
- <div> tags. *See also* layers
 - AJAX Library, 638
 - positioning, 438
- <script> tags, PHP, 644
- <table> tags (HTML tables), 146
 - align attribute, 147-148
 - border attribute, 149
 - cellpadding attribute, 149-150
 - cellspacing attribute, 149-150
 - frame attribute, 151-152
- <td> (column) tags (HTML tables), 152-153
- <tr> (row) tags (HTML tables), 152-153
- ++ symbol (JavaScript), 434

NUMBERS

- 2CO (www.2checkout.com), 701
- 4GuysFromRolla.com Web site, 717

A

- absolute positioning, 305
 - Access denied error messages, 594
 - AccessDataSource control, 678
 - accessibility
 - Accessibility Checker task pane, 347, 359
 - Check Where section, 348
 - correcting problems in, 350
 - generating HTML reports from, 351
 - Problem Details dialog, 349
 - Show section, 348
 - Accessibility Properties dialog, 347
 - designing for, 344-347
 - frames, 346
 - hyperlinks, 344-345
 - Rehabilitation Act of 1973, Section 508, 344
 - ScreenTips, 345
 - tables, 345
 - Vischeck software, 352
 - WCAG (Web Content Accessibility Guidelines), 344
 - Workforce Investment Act, 344
- Accessibility Properties dialog, 347
 - Accessibility Reports feature, 18-19, 359
 - actions (behaviors), 397
 - active FTP (File Transfer Protocol), 49
 - ActiveX Controls options (General tab, Page Editor Options dialog), 265
 - Add Current Web Site box (New dialog), 33
 - adding users to ASP.NET Forms authentication, 585
 - Address step (Wizard control), 517-518
 - AdRotator control (ASP.NET), 555-556
 - advertisement files, creating, 503-506
 - Impression element, 502

- Keyword element, 502
- Web pages, creating, 502
- XML coding for, 501
- XML elements list, 501
- Advanced tab**
 - Page Properties dialog, 115
 - Site Settings dialog
 - default validation script language, setting, 69
 - Delete Files button, 70
 - Show Hidden Files and Folders check box, 70
 - Windows Media Player Properties dialog, 254-255
- advertisement files, creating via AdRotator control (ASP.NET), 503-506**
- advertising, e-commerce, 702**
- Ajax, 707-709**
 - AJAX ASP.NET Control Toolkit, 631
 - AJAX Extensions, 631
 - AJAX Library, 630, 638
 - adding client script to ScriptManager control, 640-641
 - creating client libraries, 639
 - <div> tags, 638
 - troubleshooting, 638
 - Web forms, adding functionality to, 632
 - ScriptManager control, 635-636
 - server-side code, 634-635
 - UpdatePanel control, 637
- AJAX Extensions controls (ASP.NET), 496**
- alert method (JavaScript), 436**
- align attribute (HTML tables), 147-148, 153**
- aligning**
 - cell content (HTML tables), 160
 - text, Interactive Buttons, 387
- All Files reports, 72**
- All Pages option (find and replace tool), 278**
- Allow Line Breaks Within Tags check box (Code Formatting tab, Code View), 138**
- animation, inserting into Web sites, 250-252**
- AnonymousTemplate view, 576-577**
- Appearance tab (Flash SWF Properties dialog), 250**
- AppearanceEditorPart control, 613, 625**
- Application object model, 457**
- Application Options dialog, 75**
- Apply New Style to Document Selection check box (Style Builder), 334**
- Apply Style option (Apply Styles task pane), 328**
- Apply Styles task pane (CSS), 18, 301, 309, 316-317, 327**
 - Apply Style option, 328
 - Attach Style Sheet option, 302, 313, 329
 - Delete option, 328
 - Go To Code option, 328
 - Manage Style Sheet Links option, 329
 - Modify Style option, 328
- New Style Copy option, 328**
- New Style option, 328**
- Remove Class option, 329**
- Remove ID option, 329**
- Remove Inline Style option, 329**
- Remove Link option, 328**
- Select All x Instances option, 328**
- Select Style Sheet dialog, 302**
- ASP.NET, 65, 492**
 - AdRotator control, 555-556
 - Ajax
 - adding functionality to Web forms, 632-637
 - AJAX ASP.NET Control Toolkit, 631
 - AJAX Extensions, 496, 631
 - AJAX Library, 630, 638-641
 - troubleshooting, 638
 - authorization settings, configuring, 581
 - Content Pages, 548
 - .aspx file extension, 546
 - Content control, 549-550, 560
 - contents of, 551
 - creating, 548-549, 559
 - defining custom content, 560
 - troubleshooting, 561
 - Control Errors Visual Aid (Design View), 127
 - controls
 - accessing properties, 497-499
 - adding to Web pages, 497
 - AdRotator control, 501-506

- Calendar control, 507-511
- declarative syntax, 500
- inserting into Web pages, 496
- list of, 500-501
- rendering, 495-496
- Standard controls, 501-521
- support for, 22
- Wizard control, 512-521
- XML elements list, 501
- data access tools, 672-673
- Data controls, 495
- detail views, creating, 692
- DetailsView control, 692
- Development Server, 35, 42, 498, 601
- Expression Web 2 support, 493
- formatting, CSS styles, 521
- forms authentication
 - adding users to, 585
 - configuring
 - Authorization Rules, 587
 - configuring Web sites for, 579-582
 - enabling, 584
- functions of, 484
- GridView control, 681-682
 - creating master views, 690-691
 - sorting, 684-685
- impersonation, 589
- languages, choosing, 493
- Login controls, 495, 564
- login controls
 - ChangePassword control, 569-573
 - CreateUserWizard control, 575-576, 591
 - Login control, 565-568
 - LoginName control, 569
 - LoginStatus control, 568
 - LoginView control, 576-577
 - PasswordRecovery control, 574-575
- login systems, troubleshooting, 592-593
- Master Pages
 - attaching Web Forms to, 548
 - <body> tags, 548
 - ContentPlaceHolder control, 546-548
 - converting Web sites to, 562
 - creating, 547, 552
 - Dynamic Web Templates versus, 546, 551-552
 - master file extensions, 546
 - navigating Web sites via, 542
 - troubleshooting, 561
 - Web page property configuration, 114
 - Web Site development, 552-558
 - writing server-side code, 547
- master views, creating, 690-691
- navigation controls, 495
 - creating test Web sites, 528
- Menu control, 527-534, 542
- root nodes in sitemap files, 530
- sitemap files, 526
- SiteMapPath control, 540-541
- TreeView control, 534-536, 539, 542
- troubleshooting, 542
- web.sitemap files, 528
- .NET Framework 2.0, 485
- Nonvisual Controls Visual Aid (Design View), 127
- passwords, storing, 574
- personalization, 610, 621
- providers, 673
- SqlDataSource control, 678
- Standard controls versus HTML controls, 496
- troubleshooting, 520-521, 689-690
- user controls
 - creating, 611-612, 617-620
 - troubleshooting, 625
- validation controls, 495
 - adding to validation forms, 604-606
- CompareValidator control, 598
- ControlToValidate property, 600
- CustomValidator control, 599
- Display property, 600
- EnableClientScript property, 600
- ErrorMessage property, 599
- RangeValidator control, 598
- RegularExpressionValidator control, 598
- RequiredFieldValidator control, 599
- SetFocusOnError property, 601

- troubleshooting, 607
- ValidationGroup property, 601
- ValidationSummary control, 599
- Web Forms
 - attaching to Master Pages, 548
 - creating, 493-494
 - Web site creation, 590-592
- Web page formats, 100
- Web Part catalog, 621-623
- Web Part controls, 496
 - adding to Web Part pages, 621-623
 - AppearanceEditorPart control, 613, 625
 - BehaviorEditorPart control, 625
 - CatalogZone control, 613
 - editing, 625-626
 - EditorZone control, 613
 - LayoutEditorPart control, 625
 - PropertyGridEditorPart control, 625
 - WebPartManager control, 613, 624
 - WebPartZone control, 613
- Web Part pages
 - adding Web Part controls to, 621-623
 - BrowseDisplayMode view, 616
 - CatalogDisplayMode view, 616
 - ConnectDisplayMode view, 616
 - creating, 613-616
 - creating user controls that set display mode, 617-620
 - DesignDisplayMode view, 617
 - EditorDisplayMode view, 617
 - null value messages, 624
 - SQLServer connections, 624
 - troubleshooting, 624
 - Web resources, 717-718
- asp.netPRO Web site, 717**
- ASP (Active Server Pages), 489, 672**
- .aspx file extension (Content Pages), 546**
- Assign Unique IDs to New Tables option (General tab, Page Editor Options dialog), 263**
- Assigned To reports, 74**
- Attach Dynamic Web Template dialog (Dynamic Web Templates), 372-374**
- Attach Style Sheet dialog, 302, 313, 329, 334**
- Attribute Names Are Lowercase check box (Code Formatting tab, Code View), 137**
- attributes (HTML tag properties)**
 - adding ScreenTips to hyperlinks, 218
 - event handler attribute, 214
 - href attribute, 214
 - opening hyperlinks in other windows, 219
 - setting in Tag Properties task pane, 216-217, 219
- audio (Windows Media), inserting into Web sites, 252-253**
- Authoring tab (Page Editor Options dialog), 268**
- Authorization Rules (ASP.NET Forms authentication), configuring, 587**
- Auto step type (Wizard control), 513**
- auto thumbnails, 245-246**
- AutoFormat feature**
 - HTML tables, 156
 - Menu control (ASP.NET navigation controls), 532-533
 - SiteMapPath control (ASP.NET navigation controls), 541
- Automatically Enclose Form Fields Within a Form option (General tab, Page Editor Options dialog), 262**
- Automatically Switch Keyboard to Match Language of Surrounding Text option (General tab, Page Editor Options dialog), 263**
- AutoThumbnail tab (Page Editor Options dialog), 265**

B

- background images (CSS), 314**
- Background section (Insert Table dialog), 155**
- banks as e-commerce solutions, 701**
- base hrefs, Web pages, 114**

Basecamp project
planning/collaboration
tool, 710

baseline value (valign
attribute, HTML tables),
154

basic authentication, 58

BehaviorEditorPart
control, 625

behaviors, 21

- actions, 397
- applying, 397
- Behaviors task pane,
396-397
- Call Script behaviors,
398-399
- Change Property
behaviors, 399-401
- Change Property Restore
behaviors, 402
- Check Browser behaviors,
402-403, 413-415
- Check Plug-in behaviors,
403
- editing, 398, 414-415
- events, 397
- Go To URL behaviors,
404
- Jump Menu behaviors, 404
- Jump Menu Go behaviors,
405
- Open Browser Window
behaviors, 406
- Play Sound behaviors, 407
- Pop-up Message Window
behaviors, 407
- precedence of, 397
- Preload Images behavior,
408, 430
- processing, 396
- Set Text behaviors, 408,
410-411

- Set Text of Frame
behaviors, 408
- Set Text of Layer
behaviors, 410
- Set Text of Status Bar
behaviors, 410
- Set Text of Text Field
behaviors, 411
- Swap Image behavior, 396,
411, 430
- Swap Image Restore
behavior, 396, 412, 430
- troubleshooting, 412, 452

Behaviors task pane, 21

- accessing, 396
- Change Property dialog,
displaying, 449
- events, availability in, 397

Block Selection Visual Aid
(Design View), 125

Block Selectors (CSS), 305

blogs, 710

<body> tags (Master
Pages), 548

BodyFileName field
(MailDefinition property),
571

BOM (Byte Order Marks),
117

Bookmark dialog, 111

bookmarks

- Code View, 141
- HTML, 111

border attribute (HTML
tables), 149

borders (frames), 180, 187

Borders section (Insert
Table dialog), 155

bread crumb navigation
systems, Web site
navigation via, 525

Breakpoints, 477

Browse-time Web
component comments,
troubleshooting, 478

BrowseDisplayMode view
(Web Parts pages), 616

browsers

- Check Browser behaviors,
402-403, 413
- compatibility, 354-355
- development of, 354
- quirks rendering mode,
357
- schemas, 357
- scripting, history of, 418

Button dialog

- Button tab, 385-386
- Font tab, 386-387
- Image tab, 388-389

buttons (interactive)

- aligning text, 387
- Button dialog
 - Button tab, 385-386
 - Font tab, 386-387
 - Image tab, 388-389
- editing, 391
- inserting, 385
- previewing, 386
- saving, 390
- scripting, disabling, 384
- security, 384
- styles, choosing, 385
- troubleshooting, 392
- uses for, 392-393

by-Expression Web site,
716

C

C# (programming language), 493**Calendar control (ASP.NET)**

- adding title attributes to, 623
- CaptionAlign property, 508
- DayNameFormat property, 508
- FirstDayOfWeek property, 509
- formatting, 507
- NextMonthText property, 509
- NextPrevFormat property, 509
- PrevMonthText property, 509
- properties of, 508
- SelectedDate property, 510
- SelectionMode property, 510
- SelectMonthText property, 510
- SelectWeekText property, 510
- ShowDayHeader property, 510
- ShowGridLines property, 510
- ShowNextPrevMonth property, 510
- ShowTitle property, 511
- SideBarButtonStyle property, 521
- SideBarStyle property, 521
- StepStyle property, 521
- TitleFormat property, 511
- UseAccessibleHeader property, 511
- VisibleDate property, 511

Calendar Tasks pop-up, 507**Call Script behaviors, 398-399****Campfire chat tool, 710****CaptionAlign property, Calendar control (ASP.NET), 508****Capture Interfaces dialog, 64****Capture Packets in Promiscuous Mode check box, Capture Options dialog, 64****cascading order (CSS), 322****case-sensitivity, PHP scripts, 645****CatalogDisplayMode view (Web Parts pages), 616****CatalogZone control, 613, 621****Categories reports, 74****Categorize by Element option (Manage Styles task pane), 323****Categorize by Order option (Manage Styles task pane), 323****Categorize by Type option (Manage Styles task pane), 324****Category list (Style Builder), 334****cboSites_Change event, 470****CC field (MailDefinition property), 571****Cell Properties dialog**

- Table menu, 161
- Tag Properties task pane, 216

cellpadding attribute (HTML tables), 149-150**cells (HTML tables)**

- aligning content in, 153, 160
- merging, 158-159
- selecting, 158
- valign attribute, 153-155

cellspacing attribute (HTML tables), 149-150**certificates (digital), Personal Web Packages, 94****ChangePassword Tasks pop-up (ChangePassword control), 570****Change Property behaviors, 399-401****Change Property dialog (Behaviors task pane), 449****Change Property Restore behaviors, 402****ChangePassword control, 569**

- ChangePassword pop-up, 570
- DisplayUserName property, 570
- MailDefinition property, 571-572
- PasswordHintText property, 573
- PasswordRecoveryUrl property, 573
- SuccessPageUrl property, 573

changeStatus function (JavaScript), 423**changeVisibility function (JavaScript), 428****Check Browser behaviors, 402-403, 413-415****Check Plug-in behaviors, 403**

Check Where section
(Accessibility Checker
feature), 348

Checkout Status reports,
73

child layers

- creating, 442
- inserting into Web pages,
445
- positioning, 443
- renaming, 443

**Choose Data Source drop-
down, Menu Tasks dialog,**
542

Chris Hanscom's PHP
Resource Center Web
site, 717

Class module, 456

Class Selectors option (CSS
Reports dialog, Usage
tab), 338

classes (CSS)

- basic application of,
308-310
- Class Selectors option
(CSS Reports dialog,
Usage tab), 338
- moving, 339
- multiple classes, 310-311
- pseudo-classes, 311
- Remove Class option
(Apply Styles task pane),
329
- syntax of, 308
- troubleshooting, 313
- Undefined Classes option
(CSS Reports dialog,
Errors tab), 336

click events, 220, 465, 472

**client Ajax libraries, creat-
ing, 639**

Code Block scripts (PHP),
663

Code Error icon (Code
View), 356

Code Formatting tab

- Code View, 137-139
- Page Editor Options dia-
log, 266

code snippets, 117, 122

Code Snippets tab (Page
Editor Options dialog),
270

Code View, 124, 136, 143

- Bookmarks, 141
- Code Error icon, 356
- Code Formatting tab,
137-139
- code problems, identify-
ing, 355-357
- code snippets, 117
- Compatibility Checker
errors, troubleshooting,
362
- Context menu, 140
- Dynamic Web Templates,
modifying, 375-376
- IntelliSense, 139-140,
657-659
- Page Editor Options dia-
log options, 264-265
- Quick Tag tools, 139, 142
- syntax highlighting, 656,
665
- Tag Properties task pane,
215, 221-222

Code View options
(**General tab, Page Editor**
Options dialog), 264-265

color blindness, 352

Color Coding tab (Page
Editor Options dialog),
267

colspan attribute (HTML
tables), 152-153

column (<td>) tags (HTML
tables), 152-153

Column Properties dialog,
168

columns (HTML tables)

- adding/deleting, 164
- configuring, 166-169

command prompt, starting
Microsoft Expression
Development Server
from, 490

Comment scripts (PHP),
663

comments (PHP), 645

Common CatalogZone
Tasks pop-up, 621

Common
DeclarativeCatalogPart
Tasks pop-up, 622

Common DropDownList
Tasks pop-up, 617

Common Language
Runtime, 485

Common WebPartZone
Tasks pop-up, 614

CompareValidator control,
598

compatibility

- Accessibility Reports, 359
- backward compatibility, 355
- code problems, identify-
ing, 355-357
- Compatibility Reports,
359
- CSS Reports, 359
- defining, 354
- development of, 354
- doctype declarations
 - Compatibility Checker
dialog, 360
 - configuring, 358
 - troubleshooting, 358

- invalid code, marking, 358-359
- older browsers, designing for, 355
- schemas, 357-358
- troubleshooting, 362
- Web standards enforcement, 363

Compatibility Checker dialog

- Code View errors, troubleshooting, 362
- Compatibility pane, 360-362
- Compatibility Reports, 19, 359
- Run Check Based on Doctype Declaration in Page if Available check box, 360

Complete step type (Wizard control), 513

complex regular expressions, 279

compliance in Web sites. *See* Accessibility Reports feature

configuring

- ASP.NET authorization settings, 581
- Authorization Rules (ASP.NET forms authentication), 587
- auto thumbnails, 246
- doctype declarations (XHTML), 358
- file editors, 119-120
- frames in framesets, 179-180
- HTML tables, 166-169
- Menu control (ASP.NET navigation controls), 529
- schemas (Web browsers), 358

- Web page properties, 113
 - advanced properties, 115
 - ASP.NET Master Pages, 114
 - custom properties, 115-116
 - Default Target Frame property, 114
 - Dynamic Web Templates, 114
 - formatting properties, 115
 - general properties, 114-115
 - language properties, 116
 - META tags, 116
 - page margins, 116
- Web sites
 - ASP.NET forms authentication, 579-582
 - Microsoft Expression Development Server, 588-590
 - reports, 74

Confirmation Page tab (Form Properties dialog), 202

ConnectDisplayMode view (Web Parts pages), 616

consistency in web site design. *See* Dynamic Web Templates

Content control (Content Pages), 549-550, 560

content management systems, data access, 674

Content Pages (ASP.NET)

- .aspx file extension, 546
- Content control, 549-550, 560
- contents of, 551

- creating, 548-549, 559
- custom content, defining, 560
- troubleshooting, 561

ContentPlaceHolder control (Master Pages), 546-548

Context menu (Code View), 140

Contextual Selectors section, Apply Styles task pane, 328

Contradicting Width check box, 168

controls (ASP.NET)

- AJAX Extensions controls, 496
- declarative syntax, 500
- HTML controls versus, 496
- Login controls, 495
- Navigation controls, 495
- properties, accessing, 497-499
- rendering, 496
- Standard controls, 495
 - AdRotator control, 501-506
 - Calendar control, 507-511
 - list of, 500-501
 - Wizard control, 512-521

- Validation controls, 495

Web pages

- adding to, 497
- inserting into, 496
- WebParts controls, 496

ControlToValidate property, 600, 605

converting

- Login controls to templated controls, 566
- Web sites to Master Page sites, 562

- Cookie variables (PHP),**
662
- Copy Web Site view, 53, 84**
- corrupt temporary files, 70**
- Create Hover Image check box (Button dialog, Image tab), 388**
- Create Pressed Image check box (Button dialog, Image tab), 388**
- CreateUserIconUrl property (Login control), 567**
- CreateUserText property (Login control), 567**
- CreateUserWizard control, 575-576, 591**
- CSS (Cascading Style Sheets), 16**
 - Apply Styles task pane, 18, 316-317, 327
 - Apply Style option, 328
 - Attach Style Sheet option, 329
 - Delete option, 328
 - Go To Code option, 328
 - Manage Style Sheet Links option, 329
 - Modify Style option, 328
 - New Style Copy option, 328
 - New Style option, 328
 - Remove Class option, 329
 - Remove ID option, 329
 - Remove Inline Style option, 329
 - Remove Link option, 328
 - Select All x Instances option, 328
 - arranging styles, 339
 - ASP.NET, formatting, 521
 - Attach Style Sheet dialog, 334
 - background images, 314
 - benefits of, 295
 - Block Selectors, 305
 - cascading order, 322
 - changing standards of Web development, 706
 - classes
 - basic application of, 308-310
 - moving, 339
 - multiple classes, 310-311
 - pseudo-classes, 311
 - syntax of, 308
 - troubleshooting, 313
 - code formats, 301
 - CSS ID, 323, 329
 - development of, 294
 - elements
 - pseudo-elements, 312
 - troubleshooting, 313
 - embedded files, 313
 - Embedded Style sheets, 297-299
 - External Style sheets, 297-298
 - formatting
 - ASP.NET, 521
 - Web pages, 296-297
 - Web sites, 299-304
 - frames versus, 177
 - HTML
 - formatting tables, 163-164
 - selectors, 300
 - inheritance, 322
 - Inline styles, 297-299, 308
 - Layouts option (New dialog), 100
 - Link Style Sheet dialog, 317, 334-335
 - Manage Styles task pane, 17, 317, 321-322
 - Categorize by Element option, 323
 - Categorize by Order option, 323
 - Categorize by Type option, 324
 - Display Selected Style Preview menu, 326
 - Separate Grouped Selectors option, 326
 - Show All Styles option, 324
 - Show Styles Used in Current Page option, 324
 - Show Styles Used on Selection option, 324-325
 - Master Pages reports, 73
 - menus, creating, 527
 - positioning content
 - absolute positioning, 305
 - images, 305-307
 - Properties task pane, 318-319, 330-331
 - Reports dialog, 20, 319, 336-338, 359
 - Quick Tag Selectors, 305
 - Style Builder, 320, 332
 - Apply New Style to Document Selection check box, 334
 - Category list, 334
 - creating styles, 333-334
 - Selector drop-down, 333
 - Style Builder tool, 16

styles

creating, 333-334

Menu control
(ASP.NET navigation controls), 533-534

TreeView control
(ASP.NET navigation controls), 539

troubleshooting, 313,
338-339

Web pages
creating, 101
formatting, 296-297

Web sites
formatting, 299-304
templates, 30

**CSS Display:none Visual
Aid (Design View), 126**

CSS ID, 323, 329

**CSS tab (Page Editor
Options dialog), 266-267**

**curly braces ({ }) in regular
expressions, 281**

**Current Page option (find
and replace tool), 278**

**Custom AutoFilter dialog
(CSS Reports dialog), 337**

**Custom tab (Page
Properties dialog),
115-116**

customizing

Dynamic Web Templates,
374-376

HTML tables, 156

Tag Properties task pane,
214

**CustomValidator control,
599**

D

**dash (-) characters, regular
expressions (find and
replace tool), 277**

data access

ASP.NET tools, 672-673
content management sys-
tems, 674

Data Source Library task
pane, 24

database design, 674

history of, 672

.NET Framework tools,
674

PHP tools, 674

**Data controls (ASP.NET),
495**

**Data Source Configuration
Wizard, 530**

**Data Source Library task
pane, 24**

databases

designing, 674

saving HTML form
results to, 204, 206

updating, HTML form
fields, 207

**DataFile property
(AccessDataSource con-
trol), 679**

**DataSourceMode property
(AccessDataSource con-
trol), 679**

**DayNameFormat property,
Calendar control
(ASP.NET), 508**

Debug toolbar, 477

debugging

JavaScript, 436
macros, 477

**DeclarativeCatalogPart
control, 621**

**Default Fonts tab (Page
Editor Options dialog),
265**

**Default Page Encoding
drop-down (Language
tab), 71**

**Default Page Language
drop-down (General tab,
Page Editor Options dia-
log), 263**

**Default Target Frame
property, Web page
property configuration,
114**

**Delete Files button
(Advanced tab), 70**

**Delete option (Apply Styles
task pane), 328**

**DeleteQuery property
(AccessDataSource
control), 680**

deleting

columns from HTML
tables, 164

files

Folder List task pane,
10

manually, 70

frames, 182

metadata, 34

rows from HTML tables,
164

Web sites, 34

_vti folders, 34

delimiters (PHP), 644

**dependencies, showing in
Personal Web Packages,
90**

**Dependency Checking
drop-down (Export Web
Package dialog), 90**

**deprecated attributes,
HTML tables, 147**

design surface, 10

Design View, 124, 143, 655

formatting marks, 128
multiple layers, selecting
in, 446

Page Size menu, 135

Ruler and Grid feature
enabling grids, 131
moving layers, 130
origins, 129-130

Snap to Grid feature,
131

sizing Web pages, 134-135

Tracing Image feature,
132-133, 142

Visual Aids

ASP.NET Control
Errors, 127

ASP.NET Non-visual
Controls, 127

Block Selection, 125

CSS Display:none, 126

Empty Containers, 126

Margins and Padding,
126

Template Region
Labels, 127

Visible Borders, 126

**DesignDisplayMode view
(Web Parts pages), 617**

**DestinationPageUrl
property (Login control),
567**

detail views, creating, 692

DetailsView control, 692

Development computer, 44

DHTML

menu system

choosing, 527

Web site navigation via,
524

menus, 422

**digital certificates, Personal
Web Packages, 94**

**Digital River (e-commerce
example), 699-700**

**DisableCreatedUser
property
(CreateUserWizard con-
trol), 575**

**disk-based Web sites, 31,
41**

creating, 32
mapped drives, 32-33
testing, 35, 42
UNC shares, 32

Display mode
adding code to change,
618
user control that sets, 617

**Display property, validation
controls, 600**

**Display Selected Style
preview menu option
(Manage Styles task
pane), 326**

**DisplayRememberMe
property (Login control),
567**

**DisplayUserName property
(ChangePassword
control), 570**

<div> tags. *See also* layers
AJAX Library, 638
positioning, 438

docking task panes, 8

doctitle, 381

**doctitle region (Dynamic
Web Templates), 368**

**doctype declarations
(XHTML), 269**
code problems, identify-
ing, 356
configuring, 358

missing declarations,
quirks of, 357
Run Check Based on
Doctype Declaration in
Page if Available check
box (Compatibility
Checker dialog), 360
troubleshooting, 358, 362

**DOM (Document Object
Model)**

document object, 424
window object, 423

**DotNetJunkies Web site,
717**

**dragging/dropping task
panes, 8**

**Draw Layer button (Layers
task pane), 439**

**Draw Layout Cell tools,
171**

**Draw Layout Table tools,
171**

**Draw Table feature (Tables
Toolbar), 165**

**DropDown Box control,
617**

**DropDownList control,
617-619, 624, 632-634**

**drpMusicGroup control,
635-637**

**dynamic content in Web
sites**

behaviors, 21
Interactive Buttons, 20
layers, 22

**Dynamic Domain Name
System (DNS), 65**

**Dynamic Web Templates,
14, 30, 543**

Attach Dynamic Web
Template dialog, 374
code examples, 381-382

- comments, 52
- creating, 368
- customizing, 374-376
- doctitle region, 368
- editable regions, 370-371
 - adding, 377
 - providing default content, 373
 - remapping, 379
 - renaming, 378-380
 - resolving mismatched regions, 378
- functions of, 368
- Master Pages (ASP.NET)
 - versus, 546, 551-552
- master.dwt files, 321
- metadata storage, 33
- modifying, 374-376
- page layouts, creating, 369-370
- reports, 73
- troubleshooting, 380
- updating sites with, 374
- Web pages
 - attaching to, 372-373
 - detaching to, 376, 380
 - property configuration, 114
- Web sites, updating, 374-375

E

e-commerce

- advertising, 702
- examples of, 698-700
- payment processing, 700-701
- risks of, 703
- security, 702
- time management and, 699

echo statements (PHP),
644, 663

Edit Rule dialog, configuring ASP.NET authorization settings, 581

Edit Tag option (Quick Tag Editor), 228

editable regions (Dynamic Web Templates), 370-371

- adding, 377
- providing default content, 373
- remapping, 379
- renaming, 378-380
- resolving mismatched regions, 378

editing

- behaviors, 398, 414-415
- files in frames, 184
- Interactive Buttons, 391
- Registry searches, 288-289
- tags, Tag Properties task pane, 15
- Web Part controls, 625-626

EditorDisplayMode view (Web Parts pages), 617

EditorZone control, 613, 625

Element Selectors option (CSS Reports dialog, Usage tab), 338

elements

- CSS pseudo-elements, 312
- XML ASP.NET
 - AdRotator control, 501-502

else statements (PHP), 664

email, saving HTML form results to, 197, 200-202

Email Results tab (Form Properties dialog), 200-202

embedded files (CSS), 313

Embedded Style Sheets (CSS), 297-299

EmbeddedObjects field (MailDefinition property), 571

Embossed Capsule button style (Button dialog, Image tab), 389

emerging technologies (Web development), 707-710

Empty Containers Visual Aid (Design View), 126

Empty Web Site option (Web site templates), 30

EnableClientScript property, validation controls, 600

Errors option (Accessibility Checker feature, Check Where section), 348

Errors, reported in Accessibility Checker dialog, 348

Errors tab (CSS Reports dialog), 336

ErrorMessage property, 599-600

escape (\) characters, regular expressions (find and replace tool), 277

Ethereal

- capturing of traffic on the network, 61
- network protocol analyzer, 56, 60-61
- number of packets, 60
- using to troubleshoot HTTP publishing errors, 60

event handler attribute (HTML tag properties), 214

events

- behaviors, 397
- HTML tag properties
 - click events, 220
 - hooking, 214
- onmouseover events, 429

ExpandDepth property (TreeView control), 537**Export Web Package dialog**

- Dependency Checking drop-down, 90
- Personal Web Package creation
 - adding files to, 90
 - My Web Packages, 88
 - naming packages, 88
 - personalizing packages, 89
 - showing dependencies, 90
- Show Dependencies button, 90

Expression Designers Web site, 716**Expression Development Server (Microsoft), 484**

- ASP pages, 489
- command prompt, starting from, 490
- installing, 485
- limitations of, 488-489
- manually stopping, 487-488
- Preview tab, 486
- support for, 486
- troubleshooting, 490
- Web site configuration, 588-590

Expression Web Help Web site, 716**External Style Sheets (CSS), 297-298****F****Failed to access IIS metabase error messages, 591****Failed to start monitoring... error messages, 593****FailureAction property (Login control), 567****FailureText property (Login control), 567****FastCGI**

- installing
 - Vista, 648
 - Windows Server 2008, 649
- PHP, enabling, 650-652

FEED Validator, 712**Fiddler debugging tool, 56-59****file editors, configuring, 119-120****File menu, Recent Sites option, 34****File Results tab (Form Properties dialog), 199-200****File Save dialog, saving Personal Web Packages, 91****File System method of publishing, 49****FilterExpression property (AccessDataSource control), 680****FilterParameters property (AccessDataSource control), 680****find and replace tool, 14-15**

- All Page option, 278
- Current Page option, Find and Replace dialog, 278

Find in Source Code check box, 279**Find tab, 277****HTML****Rules feature, 283-285****Tags tab, 277, 286****Open Page(s) option, 278****Regular Expression check box, 279****regular expressions**

- curly braces ({}) in, 281
- dash (-) characters, 277
- escape (\) characters, 277
- tagged expressions, 281-282
- text, 276, 279

Replace tab, 277**saving queries, 287****Selected Page(s) option, Find and Replace dialog, 278****text, 276-282****troubleshooting, 287-288****Find in Source Code check box (Find and Replace tool), 279****finding Web sites via Recent Sites option (File menu), 34****Finish step (Wizard control), 513, 519****FirstDayOfWeek property, Calendar control (ASP.NET), 509****FirstLetter property value (DayNameFormat property), 509****FirstTwoLetters property value (DayNameFormat property), 509****Flash movies, inserting into Web sites, 248-249**

Flash SWF Properties dialog, 249-250

Folder List task pane, 10

Font dialog, 107-108

Font Families tab (Page Editor Options dialog), 271

Font Size drop-down (Font dialog), 108

Font tab (Button dialog), 386-387

fonts (text)

Default Fonts tab (Page Editor Options dialog), 265

families, formatting Web page text, 107

Font Families tab (Page Editor Options dialog), 271

Font tab (Button dialog), 386-387

sizes, formatting Web page text, 107-108

For All Web Pages option (Microsoft Expression Development Server, Preview tab), 486

for loop, 434

For Only PHP and ASP.NET Web Pages option (Microsoft Expression Development Server, Preview tab), 486

form controls (HTML), 192

list of, 193-194

troubleshooting, 208

Form Properties dialog

Confirmation Page tab, 202

Email Results tab, 200-202

File Results tab, 199-200

Saved Field tab, 203

Saving Results dialog, 198

Send To Database option, 198-200, 204-206

Send To option, 198-199

Send To Other option, 198

form validation, 432-435

ASP.NET validation controls, 598

adding to forms, 604-606

CompareValidator control, 598

ControlToValidate property, 600

CustomValidator control, 599

Display property, 600

EnableClientScript property, 600

ErrorMessage property, 599

RangeValidator control, 598

RegularExpressionValidator control, 598

RequiredFieldValidator control, 599

SetFocusOnError property, 601

ValidationGroup property, 601

ValidationSummary control, 599

form creation, 601-603

changing form field ID, 604

testing forms, 607

troubleshooting, 607

validation groups, 608

Form variable (PHP), 661

FormatString property (LoginName control), 569

formatting

ASP.NET, CSS styles, 521

Calendar control (ASP.NET), 507

Code Formatting tab (Code View), 137-139

HTML tables, 156, 163-164

hyperlinks, 115

Login control, 565

Menu control (ASP.NET navigation controls), 531-533

PasswordRecovery control, 574

SiteMapPath control (ASP.NET navigation controls), 541

TreeView control (ASP.NET navigation controls), 536

Web pages
CSS, 296-297
text, 105-108

Web sites, CSS, 299-304

formatting marks (Design View), 128

Formatting tab (Page Properties dialog), 115

forms

authentication (ASP.NET)
adding users to, 585

configuring
Authorization Rules, 587

configuring Web sites
for, 579-582

enabling, 584

HTML

creating, 194-197

database updates, 207

hidden fields, 208-209

saving results, 197-206

HTTP, components of, 192

FP_checkBrowser function, 414

frame attribute (HTML tables), 151-152

frame pages, Web page creation, 101

Frame Properties dialog, 179-180

Frame Size Width and Row Height property (Frame Properties dialog), 180

Frame Spacing option (Frames Page dialog), 180

frames, 176

accessibility, designing for, 346

alternative content, creating, 182-183

borders, 187

CSS versus, 177

deleting, 182

drawbacks of, 177

editing files in, 184

Frames pages

adding existing pages to, 179

adding URL to, 179

creating frameset pages, 177-178

creating new pages, 178

displaying web content in, 179

framesets

configuring in, 179-180

creating pages for, creating, 177-178

nested framesets, 189

hyperlinks, 183, 187

inline frames, 184-185

layout choices, 178

links, 177

MSDN Library, 176

nested frames, 177

No Frames view, 182-183

search engines, 177

sizing, 188

splitting, 181

targeting, 183

text, sizing, 177

troubleshooting, 187

uses for, 176

Frames Page dialog, 180

From field (MailDefinition property), 572

FrontPage 97, 672

FrontPage Server

Extensions, 195, 205

configuration abnormalities, 47

configuring for your Web site, 46

defined, 45

functionality, 46

HTML forms, creating, 194

HTTP Web sites, 37-39

importing Web sites, 79-80

installation, 63

phasing out of, 551

publishing content, 44

Server Message Language drop-down (Language tab, Site Settings dialog), 71

troubleshooting, 46

username/password not accepted, 63

when to choose, 46

FTP (File Transfer Protocol)

active FTP, 49

and publishing of content, 44

passive FTP, 49

security, 48

Web sites, 35-36, 41

Full property value (**DayNameFormat** property), 509

full tags (PHP), 644

functions

JavaScript

changeStatus function, 423

changeVisibility function, 428

hidAllDivs function, 428

indexOf function, 434

swapImage function, 430-431

validateForm function, 434-435

writeDateTime function, 420-422

PHP, 647

G

General tab

Flash SWF Properties dialog, 250

Page Editor Options dialog

ActiveX Controls options, 265

Assign Unique IDs to New Tables option, 263

Automatically Enclose Form Fields Within a Form option, 262

Automatically Switch Keyboard to Match Language of Surrounding Text option, 263

Code View options, 264-265

Default Page Language drop-down, 263

- Make ID Unique on Paste option, 263
- Paste Options button, 263
- Prompt for Accessibility Properties when Inserting Images option, 263
- Show Paste Options Buttons check box, 263
- Spelling Options dialog, 263
- Use and when Using Bold and Italic Toolbar Buttons option, 263
- Page Properties dialog, 114-115
- Site Settings dialog, 68
- Windows Media Player Properties dialog, 253-254
- Generator and ProgID tags, 53**
- GetSubWebs function, 466**
- GetWebSites function, 468**
- Go To Code option (Apply Styles task pane), 328**
- Go To URL behaviors, 404**
- Google Analytics, 76**
- GridView control, 681-682**
 - master views, creating, 690-691
 - sorting, 684-685
- GridView Tasks pop-up, 686**

H

- HelpPageIconUrl property (Login control), 567**
- HelpPageText property (Login control), 567**
- HelpPageUrl property (Login control), 567**
- hidden HTML form fields, 208-209**
- hideAllDivs function (JavaScript), 428**
- hiding/viewing Web page elements, 425-429**
- hooking events (HTML tag properties), 214**
- hosting Web sites, 64-65, 259**
- hotspots (images), 247**
- href attribute (HTML tag properties), 214**
- HTML (HyperText Markup Language)**
 - accessibility reports, generating, 351
 - bookmarks, 111
 - changing standards of Web development, 706
 - <div> tags, positioning, 438
 - Form Properties dialog
 - Confirmation Page tab, 202
 - Email Results tab, 200-202
 - File Results tab, 199-200
 - Saved Fields tab, 203
 - formatting marks (Design View), 128
 - forms
 - components of, 192
 - controls, 192-194, 208
 - creating, 194-197
 - database updates, 207
 - hidden fields, 208-209
 - saving results, 197-206
- frames
 - borders, 187
 - configuring in frame-sets, 179-180
 - creating alternative content, 182-183
 - CSS versus, 177
 - deleting, 182
 - drawbacks of, 177
 - editing files in, 184
 - Frames pages, 177-179
 - hyperlinks, 183, 187
 - inline frames, 184-185
 - links, 177
 - MSDN Library, 176
 - nested frames, 177
 - nested framesets, 189
 - No Frames view, 182-183
 - search engines, 177
 - sizing, 188
 - sizing text, 177
 - splitting, 181
 - targeting, 183
 - troubleshooting, 187
 - uses for, 176
- IntelliSense, 139-140
- leading whitespace, 52
- optimization, 52, 64
- Rules feature (Find and Replace tool), 283-285
- selectors (CSS), 300
- Standard ASP.NET controls versus, 496
- tables
 - adding columns, 164
 - adding rows, 164
 - aligning cell content, 160
 - cell attributes, 153-155
 - configuring columns, 166-169

- configuring rows, 166-169
- customizing, 156
- deleting columns, 164
- deleting rows, 164
- deprecated attributes, 147
- development of, 146
- drawing, 165
- formatting, 156, 163-164
- inserting, 155
- Layout Tables task pane, 169-171
- merging cells, 158-159
- monitor resolution design, 172-173
- rowspan attribute, 152-153
- selecting cells, 158
- sizing, 161-163
- <table> tags, 146-152
- <td> (column) tags, 152-153
- <tr> (row) tags, 152
- troubleshooting, 172
- tags
 - attributes, 214-219
 - changing via JavaScript, 429-431
 - events, 214, 220
 - finding/replacing, 286
 - hyperlinks, 214
 - troubleshooting, 221
 - viewing in Tag Properties task pane, 215-216
 - Web standards, 221-222
- Tags tab (Find and Replace tool), 277, 286
- whitespace, 52

HTTP (Hypertext Transfer Protocol), 46

- authentication traffic, 57
- publishing, 55-59, 62
- Web sites
 - creating, 38-39
 - FrontPage Server Extensions, 39
 - importing, 82-83
 - opening live, 37

HTTPS protocol, 46

Hyperlink Parameters dialog, 111

hyperlinks

- accessibility, designing for, 344-345
- checking, 74
- formatting, 115
- frames, 183, 187
- HTML
 - bookmarks, 111
 - tag properties, 214
- Insert Hyperlink ScreenTip dialog, 345
- Manage Style Sheet Links option (Apply Styles task pane), 329
- opening in other windows, 219
- query strings, 110
- Remove Link option (Apply Styles task pane), 328
- reports, 74
- ScreenTips, 112, 218, 345
- Web pages, creating in, 108-109

ID, layers, 440, 444

ID Selectors option (CSS Reports dialog, Usage tab), 338

IDC/HTX, 672

if statements (PHP), 663

IIS 7, installing

- Vista, 648
- Windows Server 2008, 649

images

- background images (CSS), 314
- hotspots, creating, 247
- HTML tags
 - adding to, 431
 - click events, 220
 - preloading, 430
- Image tab (Button dialog), 388-389
- maps, creating, 247
- positioning via CSS, 305-307
- Preload Images behavior, 430
- Prompt for Accessibility Properties when Inserting Images option (General tab, Page Editor Options dialog), 263
- sizing, 258
- slicing, 132
- Swap Image behavior, 411, 430
- Swap Image Restore behavior, 412, 430
- thumbnails, 245-246
- Tracing Image feature (Design View), 132-133, 142
- troubleshooting, 258

ImageSet property (TreeView control), 537

imgObj variable, 431

Immediate Window, 477

Impersonation (ASP.NET), 589

Import dialog, importing files to Web pages, 102

Import Web Package dialog, 91-93

Import Web Site wizard, 78

- Copy Web Site view, 84
- destination locations, specifying, 84

- FrontPage Server
 - Extensions method, 79-80

- HTTP method, 82-83

- troubleshooting, 85

- WebDAV method, 80-82

importing

- files to Web pages, 101-102

- Personal Web Packages, 89-93

- Web sites, 78

- FrontPage Server
 - Extensions method, 79-80

- HTTP method, 82-83

- publishing versus, 86
- specifying destination locations, 84

- troubleshooting, 85

- WebDAV method, 80-82

Impressions element, 505

Impressions XML element, AdRotator control (ASP.NET), 502

Include Once scripts (PHP), 662

include statements (PHP), 662

indexOf function (JavaScript), 434

InformIT Web site, 716

inheritance (CSS), 322

Initial Page property (Frame Properties dialog), 179

inline frames, 184-185

Inline styles (CSS), 297-299, 308, 329

Insert HTML option (Quick Tag Editor), 228, 231-232

Insert Hyperlink dialog, 108, 183

- ScreenTip button, 112

- Select Place in Document dialog, 111

- Target Frame dialog, 109

Insert Hyperlink ScreenTip dialog, 345

Insert Layer button (Layers task pane), 439

Insert Rows or Columns dialog, 164

Insert Table dialog, 148-149, 155

installing

- FastCGI

- Vista, 648

- Windows Server 2008, 649

- IIS 7

- Vista, 648

- Windows Server 2008, 649

- Microsoft Expression

- Development Server, 485

- PHP, 485, 647-650

InstructionText property (Login control), 567

IntelliSense

- Code View, 139-140

- PHP, 657-659

IntelliSense tab (Page Editor Options dialog), 271

Interactive Buttons, 20

- aligning text, 387

- Button dialog

- Button tab, 385-386

- Font tab, 386-387

- Image tab, 388-389

- editing, 391

- inserting, 385

- previewing, 386

- saving, 390

- scripting, disabling, 384

- security, 384

- styles, choosing, 385

- troubleshooting, 392

- uses for, 392-393

interactive menus (layers), creating, 442-445

interactivity, adding to layers, 448-452

Internet Explorer, 221

Internet Information Services (IIS), 65

Internet Service Providers (ISP), 65

invalid code, marking, 358-359

iPod, 44

IsBodyHtml field (MailDefinition property), 572

J

J# (programming language), 493

JavaScript, 220, 419

- ++ symbol, 434

- alert method, 436

- debugging, 436

- DOM (Document Object Model)

- document object, 424

- window object, 423

external script files, linking to, 421

form field validation, 432-435

functions

- changeStatus function, 423
- changeVisibility function, 428
- hideAllDivs function, 428
- indexOf function, 434
- swapImage function, 430-431
- validateForm function, 434-435
- writeDateTime function, 420-422

HTML tags

- adding images to, 431
- changing attributes, 429-431

images

- adding images to HTML tags, 431
- preloading, 430

inline JavaScript, 421

logic errors, 436

syntax errors, 436

troubleshooting, 435-436

Web pages

- adding to, 419-420
- hiding/showing elements in, 425-429

JimcoBooks.com Web site, 716

Jump Menu behaviors, 404

Jump Menu Go behaviors, 405

K - L

Keyword XML element, AdRotator control (ASP.NET), 502

Label control, 632

Language tab

- Page Properties dialog, 116
- Site Settings dialog, 71

Layer ID column (Layers task pane), 440

Layer Visibility column (Layers task pane), 440, 447

Layer Z-Index column (Layers task pane), 440

layers, 22, 438

- adding content to, 440
- child layers
 - creating, 442
 - inserting into Web pages, 445
 - positioning, 443
 - renaming, 443
- ID, choosing, 440
- interactive menus, creating, 442-445
- interactivity, adding, 448-452
- mainMenu layer, child layers, 442-443
- multiple layers, selecting in Design View, 446
- positioning, 442-446
- ProdSubmenu, 444, 448-451
- resizing, 441
- Ruler and Grid feature, moving via, 130

- SupportSubmenu, 451-452
- troubleshooting, 452
- uses of, 438
- visibility, setting, 447
- z-order, 452

Layers task pane, 438

- displaying, 439
- Draw Layer button, 439
- Insert Layer button, 439
- Layer ID column, 440
- Layer Visibility column, 440, 447
- Layer Z-Index column, 440
- navigating, 439

Layout section (Insert Table dialog), 155

Layout Tables task pane, 13, 166, 169-171

Layout Tool, configuring table columns/rows, 166-169

LayoutEditorPart control, 625

lblDisplayGroup Label control, 634-637

leaf nodes, TreeView control (ASP.NET navigation controls), 536

Link Style Sheet dialog (CSS), 317, 334-335

ListItem Collection Editor dialog, 617

Lists step (Wizard control), 518

Local Web site, 54

Locals Window, 477

Lock Project for Viewing check box, 479

Log Changes During Publish check box, 51

LoggedInTemplate view, 576-577**logic errors, JavaScript, 436****login controls, 495, 564**

- ChangePassword control
 - ChangePassword pop-up, 570
 - DisplayUserName property, 570
 - LoginText property, 569
 - MailDefinition property, 571-572
 - PasswordHintText property, 573
 - PasswordRecoveryUrl property, 573
 - SuccessPageUrl property, 573
- CreateUserWizard control, 575-576, 591
- Login control
 - adding to title attributes, 623
 - built-in functionality of, 566
 - converting to templated controls, 566
 - CreateUserIconUrl property, 567
 - CreateUserText property, 567
 - DestinationPageUrl property, 567
 - DisplayRememberMe property, 567
 - FailureAction property, 567
 - FailureText property, 567
 - formatting, 565
 - HelpPageIconUrl property, 567
 - HelpPageText property, 567

- HelpPageUrl property, 567

- InstructionText property, 567

- Login Tasks pop-up, 565

- LoginButtonImageUrl property, 567

- LoginButtonText property, 567

- LoginButtonType property, 567

- Orientation property, 567

- PasswordLabelText property, 567

- PasswordRecoveryIcon property, 567

- PasswordRecoveryText property, 567

- PasswordRecoveryUrl property, 568

- PasswordRequiredText property, 568

- Remember Me check box, 565

- RememberMeSet property, 568

- RememberMeText property, 568

- TextLayout property, 568

- TitleText property, 568

- UserName property, 568

- UserNameLabelText property, 568

- UserNameRequired-Error property, 568

- VisibleWhenLoggedIn property, 568

- LoginName control, 569

- LoginStatus control, 568-569

- LoginView control, 576-577

- PasswordRecovery control, 574

- formatting, 574

- PasswordRecovery Tasks pop-up, 575

- properties of, 575

- web resources, 564

login systems, 564

- ASP.NET Forms authentication

- adding users to, 585

- configuring
 - Authorization Rules, 587

- configuring Web sites for, 579-582

- enabling, 584

- Microsoft Expression Development Server, Web site configuration, 588-590

- passwords, modifying requirements of, 594-595

- security, 564

- troubleshooting, 592-593

- Web site creation, 590-592

Login Tasks pop-up (Login control), 565**LoginButtonImageUrl property (Login control), 567****LoginButtonText property (Login control), 567****LoginButtonType property (Login control), 567****LoginCreatedUser property (CreateUserWizard control), 575****LoginName control, 569****LoginStatus control, 568-569****LoginText property (LoginStatus control), 568**

LoginView control, 576-577

LoginView Tasks pop-up (LoginView control), 577

Logo Creator, The (Laughingbird Software), 703

LogoutAction property (LoginStatus control), 569

LogoutImageUrl property (LoginStatus control), 569

LogoutPageUrl property (LoginStatus control), 569

LogoutText property (LoginStatus control), 569

Long Description property (Frame Properties dialog), 179

Lulu (e-commerce example), 700

M

machine.config file, 595

macros, 455, 474

- class modules, 456
- code for, 464
- code protection, 478
- debugging, 477
- recording, 454
- running, 475
- writing, 459

MailDefinition property (ChangePassword control), 571-572

maincontent editable regions, 371

mainMenu layer, child layers, 442-443

Maintain Proportions check box (Button dialog, Image tab), 388

Make ID Unique on Paste option (General tab, Page Editor Options dialog), 263

Make the Button a GIF Image and Use a Transparent Background button (Button dialog, Image tab), 389

Make the Button a JPEG Image and Use This Background Color button (Button dialog, Image tab), 389

Manage Style Sheet Links option (Apply Styles task pane), 329

Manage Styles task pane (CSS), 17, 317, 321-322

- Categorize by Element option, 323
- Categorize by Order option, 323
- Categorize by Type option, 324
- Display Selected Style Preview menu, 326
- Separate Grouped Selectors option, 326
- Show All Styles option, 324
- Show Styles Used in Current Page option, 324
- Show Styles Used on Selection option, 324-325

Manage The Web Site Using Hidden Metadata Files check box (Site Settings dialog), 33

Manual Checklist option (Accessibility Checker feature, Check Where section), 348

mapped drives, creating on disk-based Web sites, 32-33

mapping Dynamic Web Template editable regions, 379

maps (image), creating, 247

Margin Width and Height property (Frame Properties dialog), 180

margins (Web pages), configuring, 116

Margins and Padding Visual Aid (Design View), 126

Markup Validation Service, 363

Master Pages (ASP.NET), 561

- <body> tags, 548
- ContentPlaceHolder control, 546-548
- creating, 547, 552
- Dynamic Web Templates versus, 546, 551-552
- master file extensions, 546
- navigating Web sites via, 542
- reports, 73
- server-side code, writing, 547
- troubleshooting, 561
- Web Forms, attaching to, 548
- Web page property configuration, 114
- Web sites
 - converting existing sites to, 562
 - developing, 552-558

master views, creating, 690-691

master.dwt files, 321

master.master files, 554, 560

maximizing task panes, 9

maxInvalidPasswordAttempts attribute (machine.config file), 595

Menu control (ASP.NET navigation controls), 527-529

- adding, 530-531
- AutoFormat feature, 532-533
- configuring, 529
- CSS styles, 533-534
- formatting, 531-533
- troubleshooting, 542

Menu Tasks dialog, 529, 532

menus (CSS), creating, 527

merging cells (HTML tables), 158-159

META tags, configuring for Web pages, 116

metadata, 28-29

- Dynamic Web Templates, storing in, 33
- Manage The Web Site Using Hidden Metadata Files check box, 33
- troubleshooting, 40-41
- _vti folders, deleting, 34

Microsoft Access, 64

Microsoft Expression Development Server, 484

- ASP, 489
- installing, 485
- limitations of, 488-489
- manually stopping, 487-488
- Preview tab, 486
- starting from command prompt, 490
- support for, 486

- troubleshooting, 490
- Web site configuration, 588-590

middle value (valign attribute, HTML tables), 154

minRequiredNonalpha-numericCharacters attribute (machine.config file), 595

minRequiredPasswordLength attribute (machine.config file), 595

Mismatched Case option (CSS Reports dialog, Errors tab), 336

Modify Style option (Apply Styles task pane), 328

monitors resolution, HTML table design, 172-173

More Colors dialog, 555

Mosaic Web browser, development of, 354

movies (Flash), inserting into Web sites, 248-249

moving

- classes (CSS), 339
- layers (Ruler and Grid feature), 130
- task panes, 8

MSDN Library frames, 176

multimedia

- Flash movies, inserting into Web sites, 248-249
- Silverlight applications, inserting into Web sites, 250-252
- video, web hosting fees, 259
- Windows Media audio, inserting into Web sites, 252-253

My Web Packages, 88

N

Name property (Frame Properties dialog), 179

Name/E-mail step (Wizard control), 517

naming

- child layers, 443
- editable regions, Dynamic Web Templates, 378-380
- Personal Web Packages, 88
- Web sites, 68

Navigation controls (ASP.NET), 495

navigation systems

- ASP.NET controls
 - creating sitemap files, 526
 - creating test Web sites, 528
 - Menu Control, 527-534, 542
 - root nodes in sitemap files, 530
 - saving sitemap files, 526
 - SiteMapPath Control, 540-541
 - TreeView Control, 534-536, 539, 542
 - troubleshooting, 542
 - web.sitemap files, 528
- bread crumb systems, 525
- DHTML menu system, 524, 527
- Master Pages (ASP.NET), 542
- tree view systems, 524, 534-536, 539

NavigationButtonStyle property, Wizard control (ASP.NET), 521

nested frames, 177

nested framesets, 189

.NET Framework 2.0

ASP.NET, 485

Common Language
Runtime, 485

data access tools, 674

New dialog

Add Current Web Site
box, 33

disk-based Web sites, 32

Dynamic Web Template,
creating via, 369

One Page Web Site
option, 30

Web page creation
ASP.NET page formats,
100

CSS Layouts option,
100

Frame Pages section,
101

general page formats,
98

style sheets, 101

New Extension button, 120

New settings, troubleshooting, 478

New Style Copy option (Apply Styles task pane), 328

New Style option (Apply Styles task pane), 328

NextMonthText property, Calendar control (ASP.NET), 509

NextPrevFormat property, Calendar control (ASP.NET), 509

No Frames view, 182-183

NodeIndent property (TreeView control), 538

nonbreaking spaces,
controlling spacing with,
138

null value message,
troubleshooting, 624

O

Object Browser, 458

Object models, 457

Object Tag tab (Windows Media Player Properties dialog), 255-256

Offline site development, 44

Older Files reports, 73

One Page Web Site option (New dialog), 30

online resources

ASP.NET, 717-718

Expression Web 2, 716

PHP, 717-718

Web design, 716-717

onmouseover events, 429

Open Browser Window behavior, 110, 406, 412

Open Page(s) option, 278

Open With dialog, 120

OptimizeSite function, 473

optimizing Web sites

Accessibility Reports
feature, 18-19

Compatibility Reports
feature, 19

CSS Reports feature, 20

O'Reilly Network Web site, 717

Orientation property (Login control), 567

P

Page Editor Options dialog, 105, 273

Authoring tab, 268

AutoThumbnail tab, 265

Code Formatting tab, 266

Code Snippets tab, 270

Color Coding tab, 267

CSS tab, 266-267

Default Fonts tab, 265

doctype declarations,
configuring, 358

Font Families tab, 271

General tab

ActiveX Controls
options, 265

Assign Unique IDs to
New Tables option,
263

Automatically Enclose
Form Fields Within a
Form option, 262

Automatically Switch
Keyboard to Match
Language of
Surrounding Text
option, 263

Code View options,
264-265

Default Page Language
drop-down, 263

Make ID Unique on
Paste option, 263

Paste Options button,
263

Prompt for Accessibility
Properties when
Inserting Images
option, 263

Show Paste Options
Buttons check box,
263

- Spelling Options dialog, 263
- Use `` and `` when Using Bold and Italic Toolbar Buttons option, 263
- IntelliSense tab, 271
- Picture tab, 269
- Ruler and Grid tab, 270-271
- schemas, configuring, 358
- Page object model, 458**
- Page Properties dialog, 113**
 - Advanced tab, 115
 - Custom tab, 115-116
 - Formatting tab, 115
 - General tab, 114-115
 - Language tab, 116
- Page Size menu (Design View), 135**
- pages**
 - encoding, 76, 117
 - layouts, creating via
 - Dynamic Web Templates, 369-370
 - margins, configuring for Web pages, 116
 - transitions, troubleshooting, 259
- Parameters tab (Windows Media Player Properties dialog), 256**
- parent nodes, TreeView control (ASP.NET navigation controls), 536**
- ParentLevelsDisplayed property (SiteMapPath control), 541**
- passive FTP (File Transfer Protocol), 49**
- passwordAttemptWindow attribute (machine.config file), 595**
- PasswordHintText property (ChangePassword control), 573**
- PasswordLabelText property (Login control), 567**
- PasswordRecovery control, 574-575**
- PasswordRecovery Tasks pop-up, 575**
- PasswordRecoveryIcon property (Login control), 567**
- PasswordRecoveryText property (Login control), 567**
- PasswordRecoveryUrl property (ChangePassword control), 573**
- PasswordRecoveryUrl property (Login control), 568**
- PasswordRegularExpression property (CreateUserWizard control), 576**
- PasswordRequiredText property (Login control), 568**
- passwords**
 - FTP Web sites, 36, 41
 - Remember My Password check box, 36
 - requirements, 594-595
- Paste Options button (General tab, Page Editor Options dialog), 263**
- PathDirection property (SiteMapPath control), 541**
- PathSeparator property (SiteMapPath control), 541**
- payment processing (e-commerce), 700-701**
- PayPal, 701**
- Personal Web Packages**
 - creating, 88
 - dependencies, showing, 90
 - digital certificates, 94
 - files, adding to, 90
 - importing, 89, 91-93
 - My Web Packages, 88
 - naming, 88
 - personalizing, 89
 - saving, 91
 - troubleshooting, 93
- Photoshop, importing files to Web pages, 102**
- PHP (PHP: Hypertext Preprocessor), 644**
 - Code Block scripts, 663
 - Code View
 - IntelliSense, 657-659
 - syntax highlighting, 656, 665
 - comments scripts, 663
 - cookie variables, 662
 - data access tools, 674
 - Design View, 655
 - displaying information, 665-667
 - echo statements, 644, 663
 - else statements, 664
 - FastCGI, enabling via, 650-652
 - Form variable, 661
 - functions of, 484
 - if statements, 663
 - Include Once scripts, 662
 - include statements, 662
 - installing, 485, 647-650
 - pages
 - creating, 652
 - previewing, 653-654
 - phpinfo() function, 665-667

require statements, 663
 require_once statements, 663
 Session variables, 661
 support for, 23
 syntax of
 case-sensitivity, 645
 comments, 645
 delimiters, 644
 full tags, 644
 functions, 647
 program flow, 646
 <script> tags, 644
 short tags, 645
 syntax highlighting, 656, 665
 variables, 645
 troubleshooting, 664-665
 URL variable, 661
 Web resources, 717-718

Picture tab (Page Editor Options dialog), 269

Play Sound behaviors, 407

Pop-up Message behaviors, 407

positioning
 content via CSS
 absolute positioning, 305
 images, 305-307
 <div> tags, 438
 layers, 442-446

Positioning option (Quick Tag Editor), 228, 234

Preload Images behavior, 408, 430

Preview tab
 Microsoft Expression
 Development Server, 486
 Site Settings dialog, 68-69

previewing PHP pages, 653-654

PrevMonthText property, Calendar control (ASP.NET), 509

Priority field (MailDefinition property), 572

Problem Details dialog (Accessibility task pane), 349

ProdSubmenu layer, 444, 448-451

Project Explorer, 454-456, 464

Project Properties dialog, 478-479

Prompt for Accessibility Properties when Inserting Images option (General tab, Page Editor Options dialog), 263

Prop Control control, 623

Properties window, 454

Properties, classes, 456

PropertyGridEditorPart control, 625

proportions (images), Maintain Proportions check box (Button dialog, Image tab), 388

pseudo-classes (CSS), 311-313

pseudo-elements (CSS), 312

Publish log, 51

Publish Status reports, 74

publishing, 50, 63
 HTTP, 55-59, 62-64
 server options for, 44
 to storage devices, 44
 Web sites, 13, 86

Q - R

queries

Find and Replace tool
 queries, saving, 287
 strings, hyperlinks in Web pages, 110

Quick Tag tools, 16, 139

Quick Tag Editor, 225, 235
 displaying errors, 230
 Edit Tag option, 228
 HTML checks, 229
 Insert HTML option, 228, 231-232
 Positioning option, 228, 234
 Remove Tag option, 228, 231, 234
 Tag Properties option, 228, 234
 Wrap Tag option, 233
 Quick Tag Selector, 225-226, 305
 troubleshooting, 142, 234

quirks rendering mode (browsers), 357

RangeValidator control, 598

Really Simple Syndication. *See* RSS (Really Simple Syndication)

Recent Sites option (File menu), 34

Recently Added Files report, 73

Recently Changed Files reports, 73

Registry, recent searches

- editing, 288-289
- removing, 290

Regular Expression check box (Find and Replace tool), 279**Regular Expression Editor, 605****regular expressions, 276**

- complex expressions, 279
- curly braces ({ }) in, 281
- dash (-) characters, 277
- escape (\) characters, 277
- finding/replacing text, 276, 279
- tagged expressions, 281-282

RegularExpressionValidator control, 598, 606**Rehabilitation Act of 1973, Section 508, 344****remapping editable regions (Dynamic Web Templates), 379****Remember Me check box, Login control, 565****Remember My Password check box, FTP Web sites, 36****RememberMeSet property (Login control), 568****RememberMeText property (Login control), 568****Remote Web site, 54**

- Properties dialog, 46, 52, 476
- publishing Web sites, 13

Remove Class option (Apply Styles task pane), 329**Remove ID option (Apply Styles task pane), 329****Remove Inline Style option (Apply Styles task pane), 329****Remove Link option (Apply Styles task pane), 328****Remove Tag option (Quick Tag Editor), 228, 231, 234****renaming**

- child layers, 443
- editable regions (Dynamic Web Templates), 378-380

Replace tab (Find and Replace tool), 277**reports**

- Accessibility Reports, 18-19, 359
- Compatibility Reports, 19, 359
- CSS Reports, 20, 359
 - Custom AutoFilter dialog, 337
 - Errors tab, 336
 - Usage tab, 338
- troubleshooting via, 359
- Web sites, 12, 71
 - All Files reports, 72
 - Assigned To reports, 74
 - Categories reports, 74
 - Checkout Status reports, 73
 - configuring, 74
 - Dynamic Web Template reports, 73
 - Hyperlinks reports, 74
 - Master Pages reports, 73
 - Older Files reports, 73
 - Publish Status reports, 74
 - Recently Changed Files reports, 73
 - Review Status reports, 74

- saving, 76

- Site Summary view, 72

- Slow Pages reports, 74

- Style Sheet Links reports, 73

- Unlinked Files reports, 73

require statements (PHP), 663**require_once statements (PHP), 663****RequiredFieldValidator control, 599****ResetForm procedure, 467****ResetForm subprocedure, 466****Resizable in Browser property (Frame Properties dialog), 180****resizing layers, 441****resolution (monitors), HTML table design, 172-173****Review Status reports, 74****RoleGroup Collection Editor, 577****RoleGroups, editing, 577-578****root nodes, TreeView control (ASP.NET navigation controls), 536****row (<tr>) tags (HTML tables), 152-153****rows (HTML tables)**

- adding/deleting, 164
- configuring, 166-169

rowspan attribute (HTML tables), 152-153**RSS (Really Simple Syndication), 710-712**

Ruby on Rails, 709-710

Ruler and Grid feature (Design View)

- enabling grids, 131
- moving layers, 130
- origins, 129-130
- Snap to Grid feature, 131

Ruler and Grid tab (Page Editor Options dialog), 270-271

Run Check Based on Doctype Declaration in Page if Available check box (Compatibility Checker dialog), 360

S

Saved Fields tab (Form Properties dialog), 203

saving

- Find and Replace tool queries, 287
- HTML form results, 197-202
- Interactive Buttons, 390
- Personal Web Packages, 91
- sitemap files, ASP.NET navigation controls, 526
- Web site reports, 76

Saving Results dialog (Form Properties dialog), 198

schemas (Web browsers), 357-358

ScreenTips

- accessibility, 345
- hyperlinks, 112, 218, 345
- Insert Hyperlink dialog, 112
- Quick Tag Tools, 225

<script> tags, PHP, 644

scripting

- disabling, Interactive Buttons, 384
- history of, 418
- JavaScript
 - accessing HTML tag attributes, 429
 - adding images to HTML tags, 431
 - adding to Web pages, 419-420
 - alert method, 436
 - changing HTML tag attributes, 429-431
 - debugging, 436
 - DOM (Document Object Model), 423-424
 - form field validation, 432-435
 - functions, 420
 - hiding/showing elements in Web pages, 425-429
 - inline JavaScript, 421
 - linking to external script files, 421
 - logic errors, 436
 - preloading images, 430
 - syntax errors, 436
 - troubleshooting, 435-436

ScriptManager control, 631, 635-637, 640-641

ScriptManagerProxy control, 631

scripts

- comments, 52
- default validation language, setting, 69

search engines, frames, 177

searches (Registry)

- editing, 288-289
- removing, 290

Section 508 (Rehabilitation Act of 1973), 344

Section 508 Web site guidelines. *See* Accessibility Reports feature

Secure HTTP (HTTPS) protocol, 46

security

- e-commerce, 702
- FTP, 48
- Interactive Buttons, 384
- login systems, 564
- scripting, disabling, 384

Select All x Instances option (Apply Styles task pane), 328

Select Place in Document dialog (Insert Hyperlink dialog), 111

Select Style Sheet dialog (Apply Styles task pane), 302

Select Tag Contents, 226

Selected Page(s) option (Find and Replace tool), 278

SelectedDate property, Calendar control (ASP.NET), 510

SelectionMode property, Calendar control (ASP.NET), 510

SelectMonthText property, Calendar control (ASP.NET), 510

Selector drop-down (Style Builder), 333

- SelectQuery property (AccessDataSource control), 679
- SelectWeekText property, Calendar control (ASP.NET), 510
- Send To Database option (Form Properties dialog), 198-200, 204-206
- Send To option (Form Properties dialog), 198-199
- Send To Other option (Form Properties dialog), 198
- Separate Grouped Selectors option (Manage Styles task pane), 326
- Server Message Language drop-down (Language tab), 71
- session variables (PHP), 661
- Set As Default For New Tables check box (Insert Table dialog), 149
- Set section (Insert Table dialog), 155
- Set Text behaviors, 408-411
- Set Text of Frame behaviors, 408
- Set Text of Layer behaviors, 410
- Set Text of Status Bar behaviors, 410
- Set Text of Text Field behaviors, 411
- SetFocusOnError property, validation controls, 601
- Short property value (DayNameFormat property), 509
- short tags (PHP), 645
- Shortest property value (DayNameFormat property), 509
- Show All Styles option (Manage Styles task pane), 324
- Show Alphabetized List option
 - CSS Properties task pane, 331
 - Tag Properties task pane, 214
- Show Borders check box (Frames Page dialog), 180
- Show Categorized List option
 - CSS Properties task pane, 331
 - Tag Properties task pane, 214
- Show Dependencies button (Export Web Package dialog), 90
- Show Hidden Files and Folders check box (Advanced tab), 70
- Show Paste Options Buttons check box (General tab, Page Editor Options dialog), 263
- Show Scrollbars property (Frame Properties dialog), 180
- Show section (Accessibility Checker feature), 348
- Show Set Properties On Top option
 - CSS Properties task pane, 331
 - Tag Properties task pane, 214
- Show Styles Used in Current Page option (Manage Styles task pane), 324
- Show Styles Used on Selection option (Manage Styles task pane), 324-325
- Show Tag Properties button (Tag Properties task pane), 214-216
- ShowCheck boxes property (TreeView control), 538
- ShowDayHeader property, Calendar control (ASP.NET), 510
- ShowExpandCollapse property (TreeView control), 538
- ShowGridLines property, Calendar control (ASP.NET), 510
- ShowLines property (TreeView control), 538
- ShowNextPrevMonth property, Calendar control (ASP.NET), 510
- ShowTitle property, Calendar control (ASP.NET), 511
- SideBarButtonStyle property, Calendar control (ASP.NET), 521
- SideBarStyle property, Calendar control (ASP.NET), 521

Silverlight applications,
inserting into Web sites,
250-252

site development, offline,
44

Site Settings dialog

Advanced tab

Delete Files button, 70
setting default valida-
tion script language,
69

Show Hidden Files and
Folders check box, 70

General tab, 68

Language tab, 71

Manage The Web Site
Using Hidden Metadata
Files check box, 33

Preview tab, 68-69

Site Summary view, Web
Site reports, 72

sitemap files

ASP.NET navigation con-
trols

creating for, 526

root nodes, 530

saving, 526

siteMapNode root, 526

SiteMapPath control
(ASP.NET navigation
controls), 540-541

Size section (Insert Table
dialog), 155

sizing

frames, 188

HTML tables, 161-163

images, troubleshooting,
258

layers, 441

task panes, 9

text, frames, 177

text fonts, 107-108

Web pages, 134-135

slicing (images), 132

Slow Pages reports, 74

Snap to Grid feature (Ruler
and Grid feature, Design
View), 131

Software Passport, 700

sound, inserting Windows
Media audio into Web
sites, 252-253

spell-checking, 113, 122

Spelling Options dialog
(General tab, Page Editor
Options dialog), 263

Split View, 124, 141

SQL Server, 624

SQL Server 2005 Express
Edition, 64, 592

SqlDataSource control, 678

SQLExpress database file
auto-creation error, 615

SSL (Secure Sockets
Layer), User Encrypted
Connection (SSL) check
box, 39-40

Standard ASP.NET con-
trols, 495

AdRotator control, 501

creating advertisement
files, 503-506

creating Web pages,
502

Impression element,
502

Keyword element, 502

XML elements list, 501

Calendar control

CaptionAlign property,
508

DayNameFormat
property, 508

FirstDayOfWeek
property, 509

formatting, 507

NextMonthText
property, 509

NextPrevFormat
property, 509

PrevMonthText
property, 509

properties of, 508-511

SelectedDate property,
510

SelectionMode
property, 510

SelectMonthText
property, 510

SelectWeekText
property, 510

ShowDayHeader
property, 510

ShowGridLines
property, 510

ShowNextPrevMonth
property, 510

ShowTitle property,
511

SideBarButtonStyle
property, 521

SideBarStyle property,
521

StepStyle property, 521

TitleFormat property,
511

UseAccessibleHeader
property, 511

VisibleDate property,
511

HTML controls versus,
496

list of, 500-501

Wizard control, 512-521

Start step type (Wizard
control), 513

StartHTMLOptimizer
macro, 475

Status Bar, 11

- code problems, identifying, 355-357
- sizing Web pages, 134-135
- Style Application setting
 - formatting Web page text, 105
 - Target Rule drop-down, 106-107
- Visual Aids (Design View), 125

Step step type (Wizard control), 513

StepStyle property,
Calendar control
(ASP.NET), 521

Style Application setting
(Status Bar)

- formatting Web page text, 105
- Target Rule drop-down, 106-107

Style Application toolbar,
267

Style Builder (CSS), 10,
320, 332

- Apply New Style to Document Selection check box, 334
- Category list, 334
- Selector drop-down, 333
- styles, creating, 333-334

Style Sheet Links reports,
73

style sheets. *See* CSS
(Cascading Style Sheets)

styles (CSS)

- arranging, 339
- creating, 333-334

styles.css, 298, 303

Subject field
(MailDefinition property),
572

subsites, 29, 38-39, 51

SuccessPageUrl property
(ChangePassword control), 573

Summary option (CSS
Properties task pane), 331

SupportedDisplayModes
method of the
WebPartDisplayMode,
619

SupportSubmenu layer,
451-452

Swap Image behavior, 396,
411, 430

Swap Image Restore
behavior, 396, 412, 430

swapImage function
(JavaScript), 430-431

Synchronize setting (Copy
Web Site View), 53

syntax

- errors, JavaScript, 436
- highlighting (PHP), 656, 665

T

Table AutoFormat dialog,
156

Table context menu,
156-157

Table menu, 156-157

<table> tags (HTML
tables), 146

- align attribute, 147-148
- border attribute, 149
- cellpadding attribute, 149-150

- cellspacing attribute, 149-150
- frame attribute, 151-152

tables

- accessibility, designing for, 345
- Layout Tables task pane, 13, 170

tables (HTML)

- cells
 - align attribute, 153
 - aligning content in, 160
 - merging, 158-159
 - selecting, 158
 - valign attribute, 153-155

columns

- adding, 164
- configuring, 166-169
- deleting, 164

customizing, 156

deprecated attributes, 147

development of, 146

drawing, 165

formatting, 156, 163-164

inserting, 155

Layout Tables task pane,
169-171

monitor resolution design,
172-173

rows

- adding, 164
- configuring, 166-169
- deleting, 164

sizing, 161-163

<table> tags, 146

- align attribute, 147-148
- border attribute, 149
- cellpadding attribute, 149-150
- cellspacing attribute, 149-150
- frame attribute, 151-152

- <td> (column) tags, 152-153
 - <tr> (row) tags, 152-153
 - troubleshooting, 172
- Tables Toolbar, Draw Table feature, 165**
- tabs, adding as task panes, 8-10**
- Tag Names Are Lowercase check box (Code Formatting tab, Code View), 137**
- tag properties (HTML)**
 - attributes, 214
 - adding ScreenTips to Hyperlinks, 218
 - opening hyperlinks in other windows, 219
 - setting in Tag Properties task pane, 216-219
 - events
 - click events, 220
 - hooking, 214
 - hyperlinks, 214
 - Tag Properties task pane, viewing in, 215-216
 - troubleshooting, 221
 - Web standards, 221-222
- Tag Properties option (Quick Tag Editor), 228, 234**
- Tag Properties task pane, 212, 497, 534, 537-539**
 - ASP.NET control properties, accessing, 499
 - Cell Properties dialog, 216
 - Code View, 215, 221-222
 - collapsing categories in, 213
 - context-sensitivity in, 213
 - customizing, 214
 - editing tags, 15
 - events, 220
 - setting attributes in, 216-219
 - Show Alphabetized List button, 214
 - Show Categorized List button, 214
 - Show Set Properties on Top button, 214
 - Show Tag Properties button, 214-216
 - troubleshooting, 221
 - viewing tag properties in, 215-216
- tagged expressions, 281-282**
- tags (HTML)**
 - editing, Tag Properties task pane, 15
 - JavaScript, changing via, 429-431
 - Quick Tag tools, 16
- Tags section (Code Formatting tab, Code View), 138**
- Target Frame dialog (Insert Hyperlink dialog), 109, 183**
- Target Rule drop-down (Style Application setting, Status Bar), 106-107**
- targeting**
 - frames, 183
 - hyperlinks in Web pages, 109
- task panes**
 - activating, 8
 - docking, 8
 - dragging/dropping, 8
 - maximizing, 9
 - tabs, adding as, 8-10
- <td> (column) tags (HTML tables), 152-153**
- teams, Assigned To reports, 74**
- Template Region Labels Visual Aid (Design View), 127**
- Template World free templates Web site, 717**
- templated controls, converting Login controls to, 566**
- TemplatedWizardSteps, 514**
- templates**
 - Dynamic Web Templates, 14, 30
 - Attach Dynamic Web Template dialog, 374
 - attaching to Web pages, 372-373
 - code examples, 381-382
 - creating, 368-370
 - creating page layouts, 369-370
 - detaching to Web pages, 376, 380
 - doctitle region, 368
 - editable regions, 370-373, 377-380
 - functions of, 368
 - Master Pages (ASP.NET) versus, 546, 551-552
 - master.dwt files, 321
 - metadata storage, 33
 - reports, 73
 - troubleshooting, 380
 - updating Web sites, 374-375
 - Web page property configuration, 114
 - Web site templates, 29-30

temporary files, corrupted files, 70

test Web sites, creating via ASP.NET navigation controls, 528

testing

- disk-based Web sites, 35, 42
- validation forms, 607

text

- aligning, Interactive Buttons, 387
- finding/replacing, 276-282
- Font tab (Button dialog), 386-387
- fonts
 - Default Fonts tab (Page Editor Options dialog), 265
 - families, 107
 - Font Families tab (Page Editor Options dialog), 271
 - sizes, 107-108
- frames, sizing in, 177
- Web pages, formatting in, 105-108

TextLayout property (Login control), 568

thumbnail images, 245-246

Time management, 699

Timer control, 631

Title property (Frame Properties dialog), 179

TitleFormat property, Calendar control (ASP.NET), 511

TitleText property (Login control), 568

top value (valign attribute, HTML tables), 154-155

<tr> (row) tags (HTML tables), 152-153

Tracing Image feature (Design View)

- Snap to Grid feature, 132-133
- troubleshooting, 142

tree view navigation systems

- TreeView control (ASP.NET navigation controls), 534-535
 - CSS styles, 539
 - formatting, 536
- Web site navigation via, 524

TreeView control (ASP.NET navigation controls), 534-535

- CSS styles, 539
- ExpandDepth property, 537
- formatting, 536
- ImageSet property, 537
- leaf nodes, 536
- NodeIndent property, 538
- parent nodes, 536
- root nodes, 536
- ShowCheck boxes property, 538
- ShowExpandCollapse property, 538
- ShowLines property, 538
- troubleshooting, 542

TreeView Tasks dialog, 542

troubleshooting

- Ajax, 638
- ASP.NET, 520-521, 542, 689-690
- behaviors, 412, 452
- code snippets, 122
- Code View, Compatibility Checker errors, 362
- compatibility, 362

Compatibility Checker dialog, 362

Content Pages (ASP.NET), 561

CSS, 313, 338-339

doctype declarations (XHTML), 358, 362

Dynamic Web Templates, 380

Expression Development Server, 490

Find and Replace tool, 287-288

frames, 187

FTP Web site passwords, 41

HTML

- form controls, 208
- tables, 172

images, sizing, 258

importing Web sites, 85

Interactive Buttons, 392

JavaScript, 435-436

layers, 452

login systems, 592-593

Master Pages (ASP.NET), 561

metadata, 40-41

Microsoft Expression Development Server, 490

page encoding, 76

page transitions, 259

passwords, FTP Web sites, 41

Personal Web Packages, 93

PHP, 664-665

publishing, 55-59, 62-64

Quick Tag tools, 142, 234

spell-checking, 122

style sheets, 313

tag properties (HTML), 221

Tracing Image feature (Design View), 142

user controls, 625

validation forms, 607
 Web Parts, 624
 Web sites, 40-41
 FTP Web site passwords, 41
 importing, 85
 _vti folders, 40-41

U

UNC (Universal Naming Convention)

paths, 49
 shares, creating on disk-based Web sites, 32

Undefined Classes option (CSS Reports dialog, Errors tab), 336

Unlinked Files reports, 73

Unused Styles option (CSS Reports dialog, Errors tab), 336

UpdatePanel control, 631, 635-637

UpdateProgress control, 631

UpdateQuery property (AccessDataSource control), 680

updates

databases, HTML form fields, 207
 Web sites via Dynamic Web Templates, 374-375

URL (Uniform Resource Locators), adding to Frames pages, 179

URL variable (PHP), 661

Usage tab (CSS Reports dialog), 338

Use and when Using Bold and

Italic Toolbar Buttons option (General tab, Page Editor Options dialog), 263

UseAccessibleHeader property, Calendar control (ASP.NET), 511

user controls, 610

creating, 611-612, 617-620
 display mode, setting, 617
 troubleshooting, 625

User Encrypted Connection (SSL) checkbox, HTTP Web site creation, 39-40

UserForm, 456

adding controls to, 460
 controls, types of, 461-463
 creating, 459
 inserting into project, 460
 troubleshooting, 478

UserName property (Login control), 568

UserNameLabelText property (Login control), 568

UserNameRequiredError property (Login control), 568

V

validateForm function (JavaScript), 434-435

validating forms

ASP.NET validation controls
 adding to forms, 604-606
 CompareValidator control, 598
 ControlToValidate property, 600

CustomValidator control, 599

Display property, 600

EnableClientScript property, 600

ErrorMessage property, 599

RangeValidator control, 598

RegularExpressionValidator control, 598

RequiredFieldValidator control, 599

SetFocusOnError property, 601

ValidationGroup property, 601

ValidationSummary control, 599

form creation, 601-603

changing form field ID, 604

testing forms, 607

troubleshooting, 607

validation groups, 608

validation controls (ASP.NET), 495

adding to validation forms, 604-606

common properties, 599

CompareValidator control, 598

ControlToValidate property, 600

CustomValidator control, 599

Display property, 600

EnableClientScript property, 600

ErrorMessage property, 599

RangeValidator control, 598

RegularExpressionValidator control, 598

- RequiredFieldValidator control, 599
- SetFocusOnError property, 601
- troubleshooting, 607
- ValidationGroup property, 601
- ValidationSummary control, 599

validation groups, 608

valign attribute (HTML tables), 153-155

variables (PHP), 645

VB (programming language), 493

VBA (Visual Basic for Applications)

- accessing Web sites with, 456
- Application object model, 457
- limitation of, 454
- macros, creating, 453
- Page object model, 458
- programming with, 454
- Web object model, 457

video

- Flash movies, inserting into Web sites, 248-249
- web hosting fees, 259

views

- Code View, 124, 136, 143
 - Bookmarks, 141
 - Code Error icon, 356
 - Code Formatting tab, 137-139
 - code snippets, 117
 - Context menu, 140
 - identifying code problems, 355-357
 - IntelliSense, 139-140

- modifying Dynamic Web Templates, 375-376
- Page Editor Options dialog options, 264-265
- Quick Tag tools, 139, 142
- troubleshooting
 - Compatibility Checker errors, 362

- Copy Web Site view (Import Web Site Wizard), 84

- Design View, 124, 143
 - formatting marks, 128
 - Page Size menu, 135
 - Ruler and Grid feature, 129-131
 - selecting multiple layers in, 446
 - sizing Web pages, 134-135
 - Tracing Image feature, 132-133, 142

- Visual Aids, 125-127

- No Frames view, 182-183
- Remote Web Site view, publishing Web sites, 13
- Split View, 124, 141

Vischeck software, 352

visibility, setting in layers, 447

Visible Borders Visual Aid (Design View), 126

VisibleDate property, Calendar control (ASP.NET), 511

VisibleWhenLoggedIn property (Login control), 568

Vista (Windows), installing FastCGI and IIS 7, 648

Visual Aids (Design View)

ASP.NET

- Control Errors, 127
- Non-visual Controls, 127

- Block Selection, 125
- CSS Display:none, 126
- Empty Containers, 126
- Margins and Padding, 126
- Template Region Labels, 127
- Visible Borders, 126

Visual Basic Editor, 454, 458-459, 477-478

Visual Web Developer Express Edition, 610

VTI (Vermeer Technologies Incorporated), 46

_vti folders

- deleting, 34
- metadata, 28-29
- troubleshooting, 40-41

W

W3C (World Wide Web Consortium) Web site, 717

Warnings option (Accessibility Checker feature, Check Where section), 348

WaSP (Web Standards Project), 706

Watch Window, 477

WCAG (Web Content Accessibility Guidelines). See Accessibility Reports feature

Web banners, 702-703

Web browsers

- Check Browser behaviors, 402-403, 413
- compatibility, 354-355
- development of, 354
- page transitions, troubleshooting, 259
- quirks rendering mode, 357
- schemas, 357
- scripting, history of, 418

Web design resources, 716-717**Web Designer Tracing Image and Interactive Button attributes, 53****Web development**

- changing standards of, 706
- emerging technologies, 707-710
- RSS, 710-712
- XHTML, 707

Web forms (ASP.NET)

- creating, 493-494
- Master Pages, attaching to, 548
- Web site creation, 590-592

web hosting fees for video, 259**Web object model, 457****Web pages**

- AdRotator control (ASP.NET), creating sites from, 502
- Ajax functionality, adding to, 632
- ScriptManager control, 635-636
- server-side code, 634-635
- UpdatePanel control, 637

- ASP.NET controls, adding to, 496-497
- base hrefs, 114
- code snippets, 117
- Code View, 124, 136, 143
 - Bookmarks, 141
 - Code Formatting tab, 137-139
 - Context menu, 140
 - IntelliSense, 139-140
 - Quick Tag tools, 139, 142
- creating
 - ASP.NET page formats, 100
 - CSS layouts, 100
 - frame pages, 101
 - general page formats, 98
 - style sheets, 101
- Design View, 124, 143
 - formatting marks, 128
 - Page Size menu, 135
 - Ruler and Grid feature, 129-131
 - sizing in, 134-135
 - Tracing Image feature, 132-133, 142
 - Visual Aids, 125-127
- Dynamic Web Templates
 - attaching to, 372-373
 - detaching to, 376, 380
- formatting
 - CSS (Cascading Style Sheets), 296-297
 - text, 105-108
- hiding/showing elements, 425-429
- HTML bookmarks, 111
- hyperlinks
 - creating, 108-109
 - HTML bookmarks, 111-112

- querystrings, 110
- ScreenTips, 112
- targeting, 109
- importing files, 101-102
- JavaScript, adding, 419-420
- layers
 - adding content to, 440
 - adding interactivity to, 448-452
 - child layers, 442-445
 - choosing ID, 440
 - creating interactive menus, 442-445
 - mainMenu layer, 442-443
 - positioning, 442-446
 - ProdSubmenu, 444, 448-451
 - resizing, 441
 - selecting multiple layers in Design View, 446
 - SupportSubmenu, 451-452
 - troubleshooting, 452
 - uses of, 438
 - visibility, 447
 - z-order, 452
- properties, configuring, 113
 - advanced properties, 115
 - ASP.NET Master Pages, 114
 - custom properties, 115-116
 - Default Target Frame property, 114
 - Dynamic Web Templates, 114
 - formatting properties, 115
 - general properties, 114-115

- language properties, 116
- META tags, 116
- page margins, 116
- sizing, 134-135
- spell-checking, 113
- Split View, 124, 141

Web Part controls

- AppearanceEditorPart control, 625
- BehaviorEditorPart control, 625
- LayoutEditorPart control, 625
- PropertyGridEditorPart control, 625

Web Parts

- AppearanceEditorPart control, 613
- CatalogZone control, 613
- components of, 610
- controls, 610
 - adding to Web Part pages, 621-623
- AppearanceEditorPart control, 625
- BehaviorEditorPart control, 625
- CatalogZone control, 613
- editing, 625-626
- EditorZone control, 613
- LayoutEditorPart control, 625
- PropertyGridEditorPart control, 625
- in Toolbox, 613
- WebPartManager control, 613, 624
- WebPartZone control, 613
- EditorZone control, 613

- pages
 - adding Web Part controls to, 621-623
- BrowseDisplayMode view, 616
- CatalogDisplayMode view, 616
- ConnectDisplayMode view, 616
- creating, 613-614, 616
- creating user controls that set display mode, 617-620
- DesignDisplayMode view, 617
- display modes, 616
- EditorDisplayMode view, 617
- null value messages, 624
- SQLServer connections, 624
- troubleshooting, 624
- user controls
 - creating, 611-612, 617-620
 - documentation, 611
 - troubleshooting, 625
- WebPartManager control, 613, 624
- WebPartZone control, 613

Web Parts Catalog, 621-623

Web Parts zone, 610

Web resources

- ASP.NET, 717-718
- Expression Web 2, 716
- PHP, 717-718
- Web design, 716-717

Web sites

- Ajax functionality, adding to, 632
 - ScriptManager control, 635-636
 - server-side code, 634-635
 - UpdatePanel control, 637
- components of, 28
- creating, 12, 41
- deleting, 34
- disk-based sites, 31, 41
 - creating, 32
 - mapped drives, 32-33
 - testing, 35, 42
 - UNC shares, 32
- dynamic content
 - behaviors, 21
 - Interactive Buttons, 20
 - layers, 22
- finding, Recent Sites
 - option (File menu), 34
- formatting, CSS, 299-304
- FTP sites, 35-36, 41
- hosting, 64-65
- HTTP sites, 41
 - creating, 38
- FrontPage Server Extensions, 39
- opening live, 37
- subsite creation, 38-39
- User Encrypted Connection (SSL)
 - check box, 39-40
- importing, 78
 - FrontPage Server Extensions method, 79-80
 - HTTP method, 82-83
 - moving by, 78-84
 - publishing versus, 86
 - specifying destination locations, 84

- troubleshooting, 85
 - WebDAV method, 80-82
 - metadata, 28-29
 - moving by importing, 78-84
 - naming, 68
 - navigating
 - bread crumb systems, 525
 - DHTML menu systems, 524, 527
 - Master Pages (ASP.NET), 542
 - tree view systems, 524, 534-536, 539
 - optimization
 - Accessibility Reports feature, 18-19
 - Compatibility Reports feature, 19
 - CSS Reports feature, 20
 - previewing, 68-69
 - publishing, 13, 86
 - reports, 12, 71
 - All Files reports, 72
 - Assigned To reports, 74
 - Categories reports, 74
 - Checkout Status reports, 73
 - configuring, 74
 - Dynamic Web Template reports, 73
 - Hyperlinks reports, 74
 - Master Pages reports, 73
 - Older Files reports, 73
 - Publish Status reports, 74
 - Recently Changed Files reports, 73
 - Review Status reports, 74
 - saving, 76
 - Site Summary view, 72
 - Slow Pages reports, 74
 - Style Sheet Links reports, 73
 - Unlinked Files reports, 73
 - subsites, 29
 - templates, 29
 - CSS, 30
 - Dynamic Web Templates, 30, 33
 - Empty Web site option, 30
 - One Page Web site option (New dialog), 30
 - test Web sites, creating via ASP.NET navigation controls, 528
 - troubleshooting, 40-41
 - updating via Dynamic Web Templates, 374-375
- Web standards**
- compatibility, 363
 - HTML tag properties, 221-222
- web.sitemap file (ASP.NET navigation controls), 528**
- WebDAV, 44**
- FrontPage Server Extensions used instead of, 63
 - Web sites
 - importing, 80-82
 - publishing Expression Web Designer Web sites, 48
- Webmonkey Web site, 716**
- WebPartManager control, 613, 619, 624**
- WebParts controls (ASP.NET), 496**
- WebPartZone control, 613-614**
- Welcome step (Wizard control), 516**
- widths, adjusting in HTML tables, 161-163**
- window object (DOM), 423**
- Windows Integrated Authentication, 57**
- Windows Media audio, inserting into Web sites, 252-253**
- Windows Media Player Properties dialog**
- Advanced tab, 254-255
 - General tab, 253-254
 - Object Tag tab, 255-256
 - Parameters tab, 256
- Windows Server 2008, installing**
- FastCGI, 649
 - IIS 7, 649
- Windows Vista, installing**
- FastCGI, 648
 - IIS 7, 648
- Wizard control (ASP.NET)**
- NavigationButtonStyle property, 521
 - steps of, 512
 - wizards, creating, 513-515
 - Address step, 517-518
 - Finish step, 519
 - Lists step, 518
 - Name/E-mail step, 517
 - Welcome step, 516
- wizard.aspx, 513**
- wizards**
- creating, 513-515
 - Address step, 517-518
 - Finish step, 519

- Lists step, 518
- Name/E-mail step, 517
- Welcome step, 516
- Data Source
 - Configuration Wizard, 530
- Import Web Site wizard, 78
 - Copy Web Site view, 84
 - FrontPage Server
 - Extensions method, 79-80
 - HTTP method, 82-83
 - specifying destination locations, 84
 - troubleshooting, 85
 - WebDAV method, 80-82
- WizardSteps, 514
- Workforce Investment Act, 344
- workgroups, Assigned To reports, 74
- Wrap Tag option (Quick Tag Editor), 233
- writeDateTime function (JavaScript), 420-422

X - Y - Z

XHTML (Extensible Hypertext Markup Language)

- doctype declarations
 - configuring, 358
 - identifying code problems, 356
 - quirks of missing declarations, 357
- Run Check Based on Doctype Declaration in Page if Available check box (Compatibility Checker dialog), 360
- troubleshooting, 358, 362
- requirements for, 707

XML (Extensible Markup Language)

- elements, AdRotator control (ASP.NET), 501-502
- files, saving HTML form results, 199

z-order (layers), 452

z-position, 307