

Figure 18.1
Use the Data Model inspector.

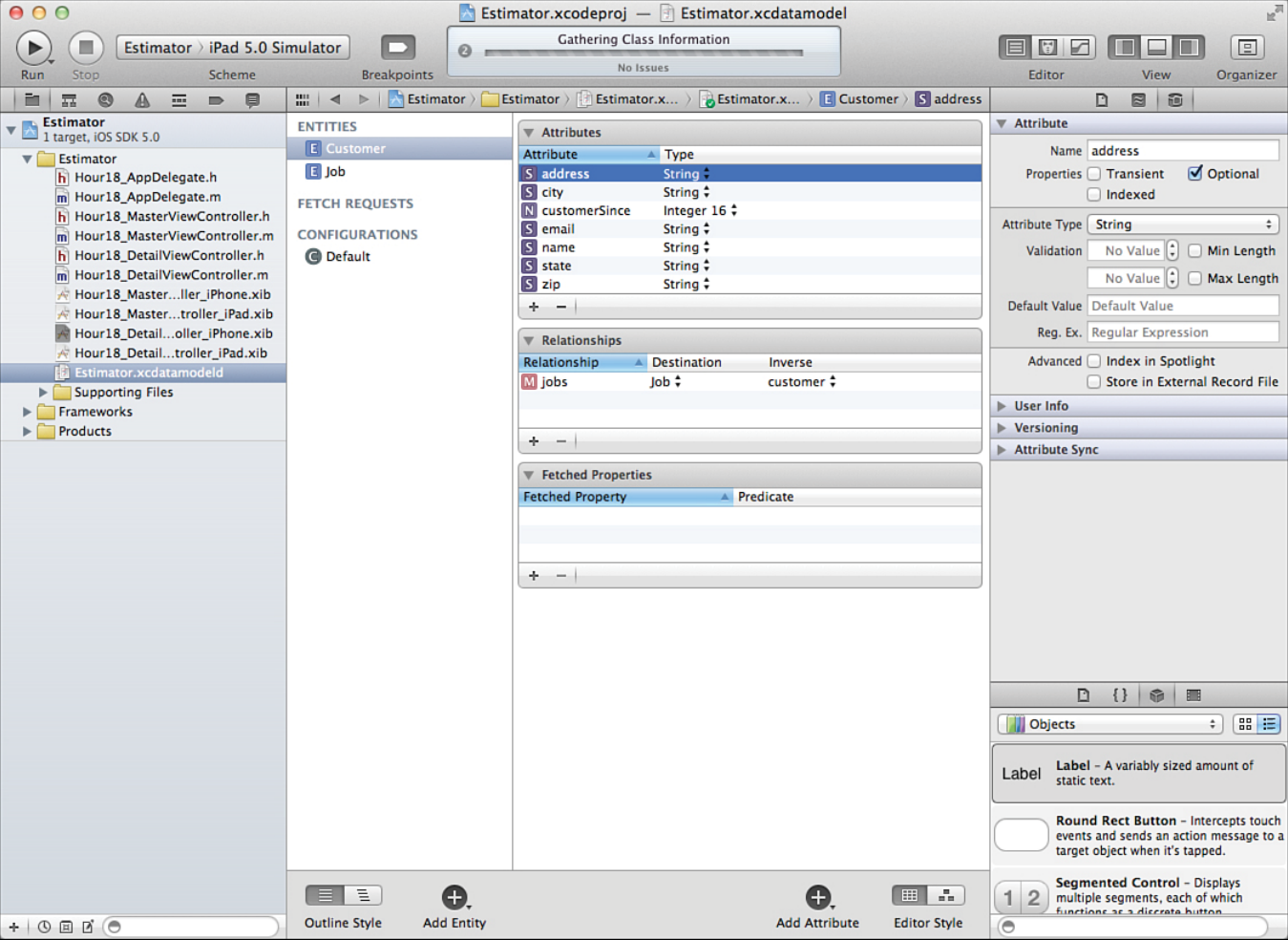


Figure 18.2
Manage attribute settings.

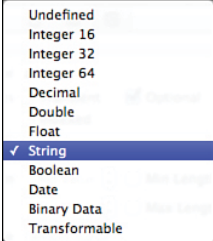


Figure 18.3
Select an attribute type.

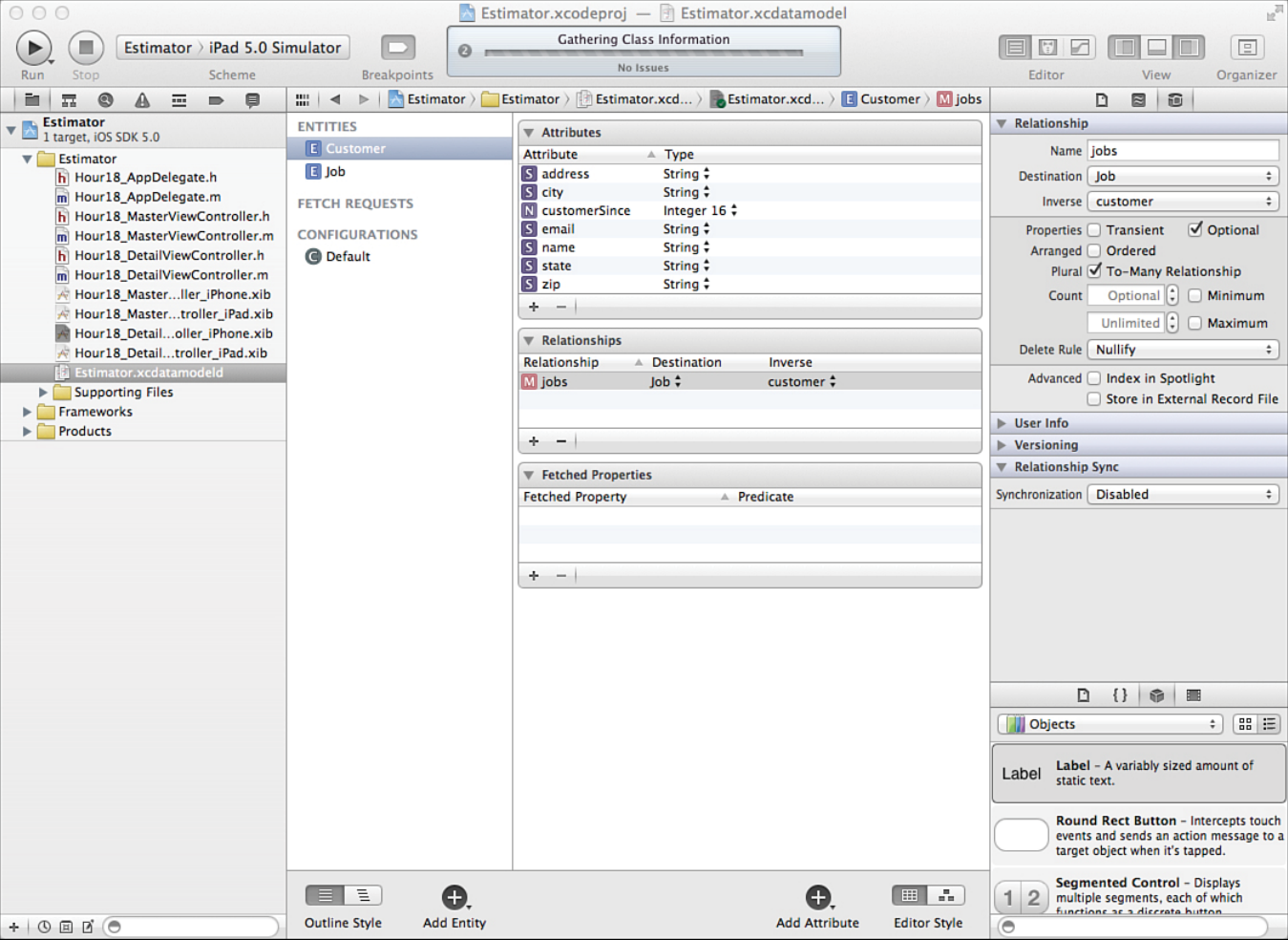


Figure 18.4
Manage relationship settings.

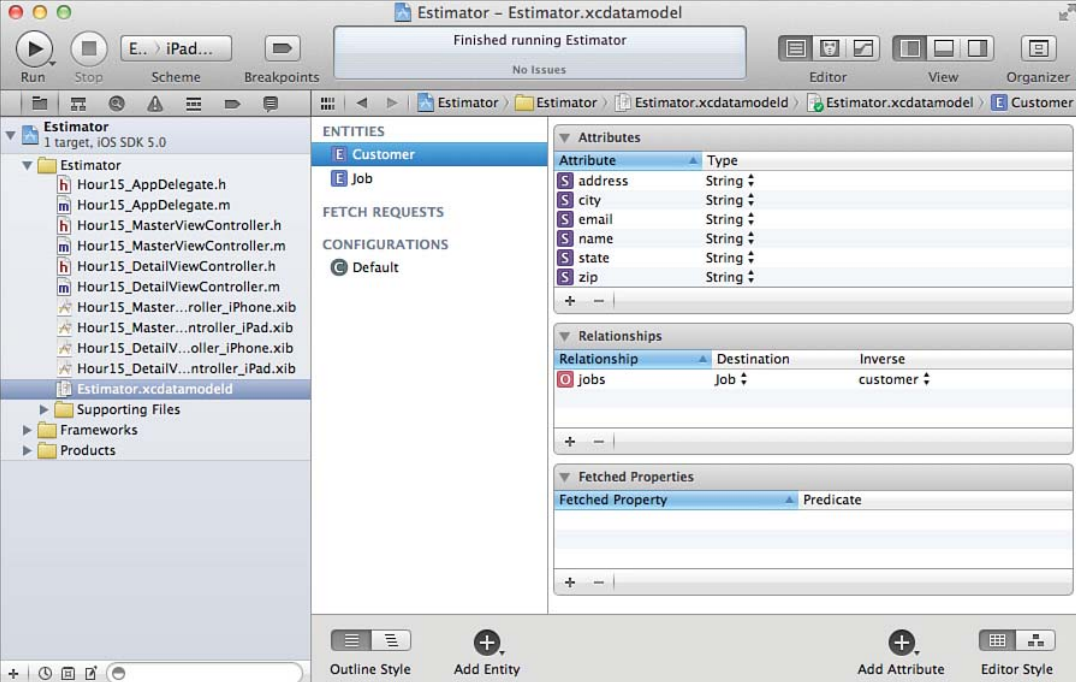


Figure 18.5
Define the Customer entity.

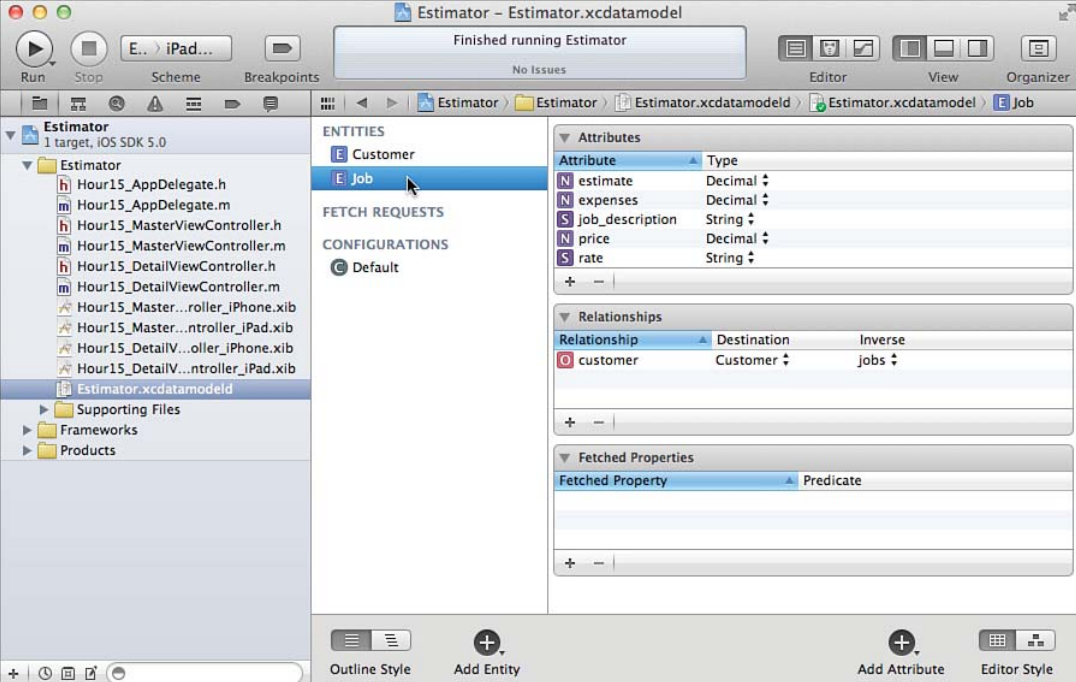


Figure 18.6
Define the Job entity.

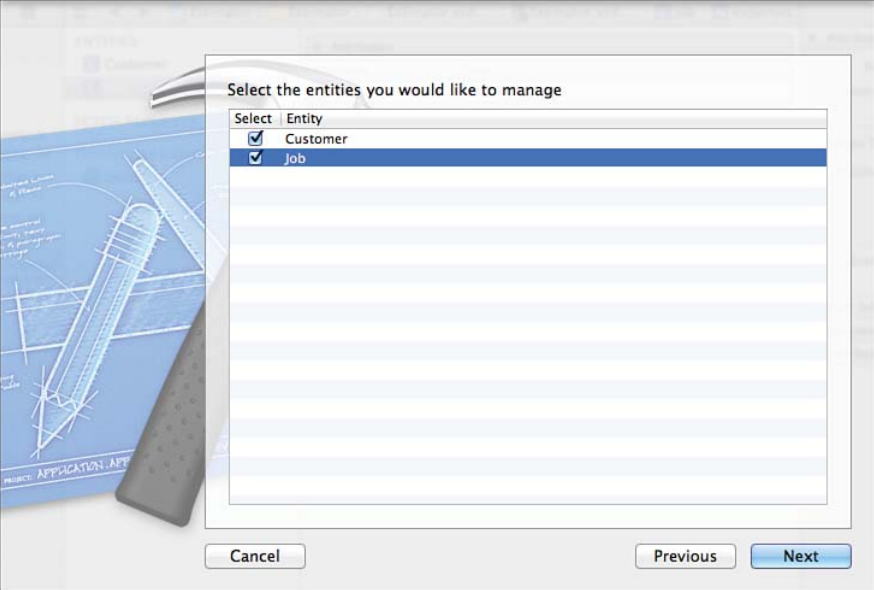


Figure 18.7
Select your subclasses.

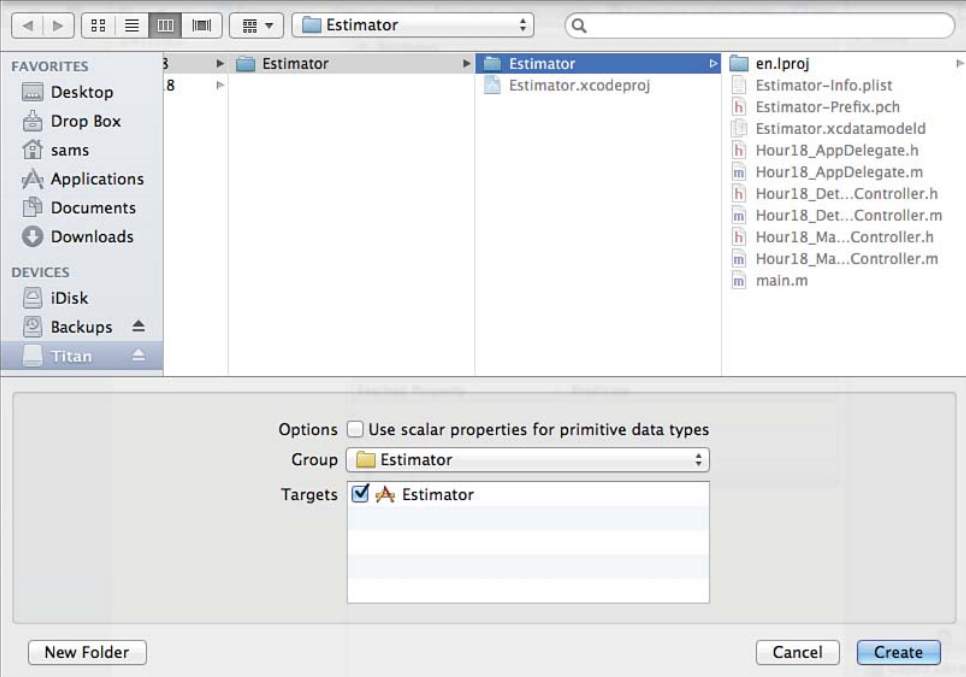


Figure 18.8
Set the group and disk location for the subclass.