

Figure 13.1
Create a new universal project.

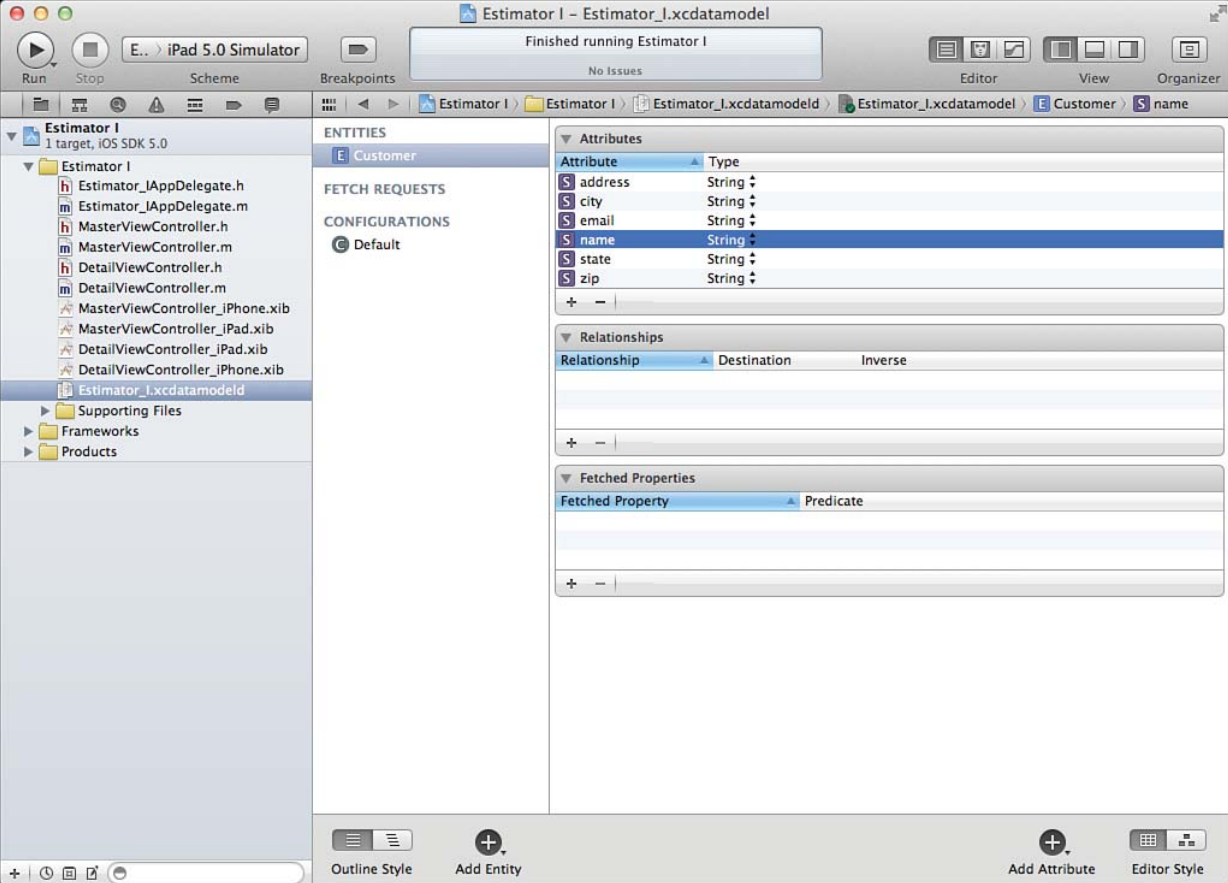


Figure 13.2
Build your new data model (or revise the old one).

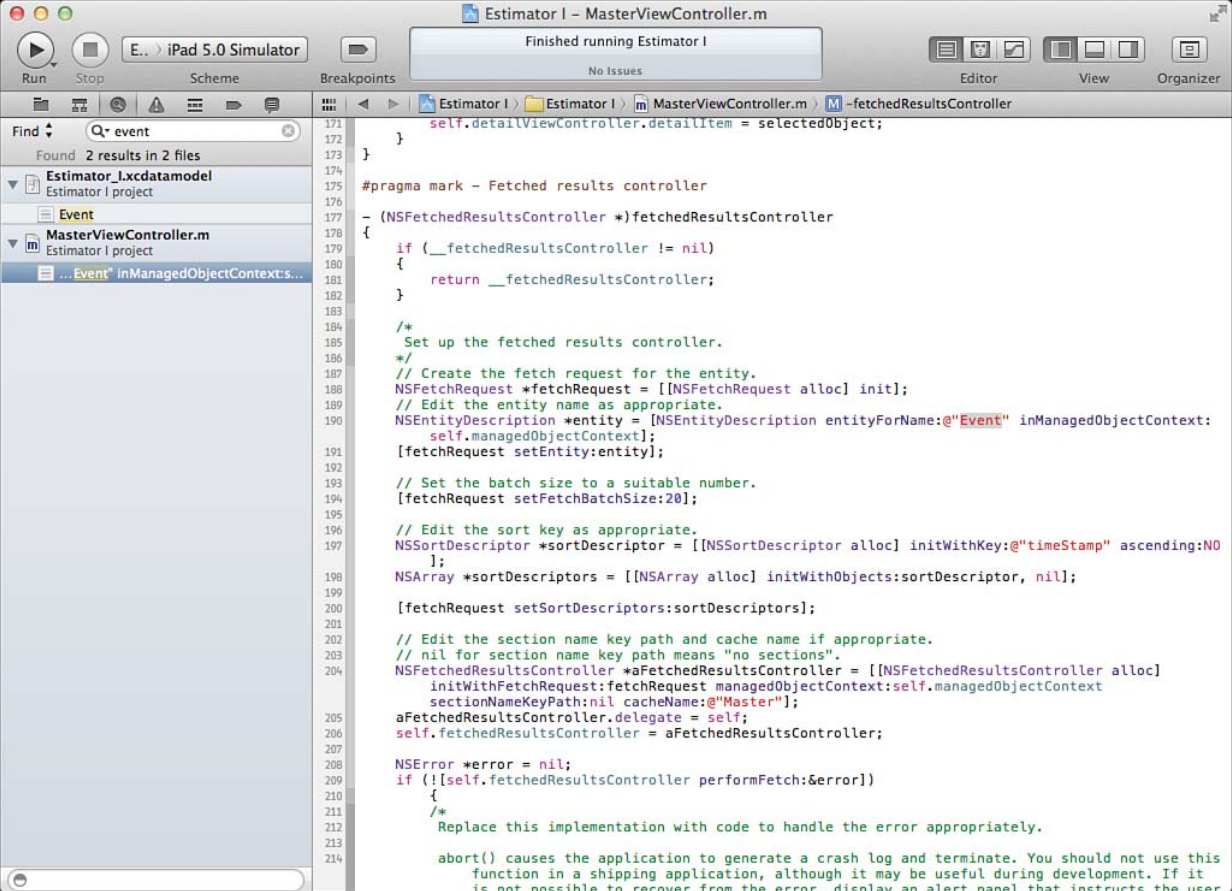


Figure 13.3
Search for Event.

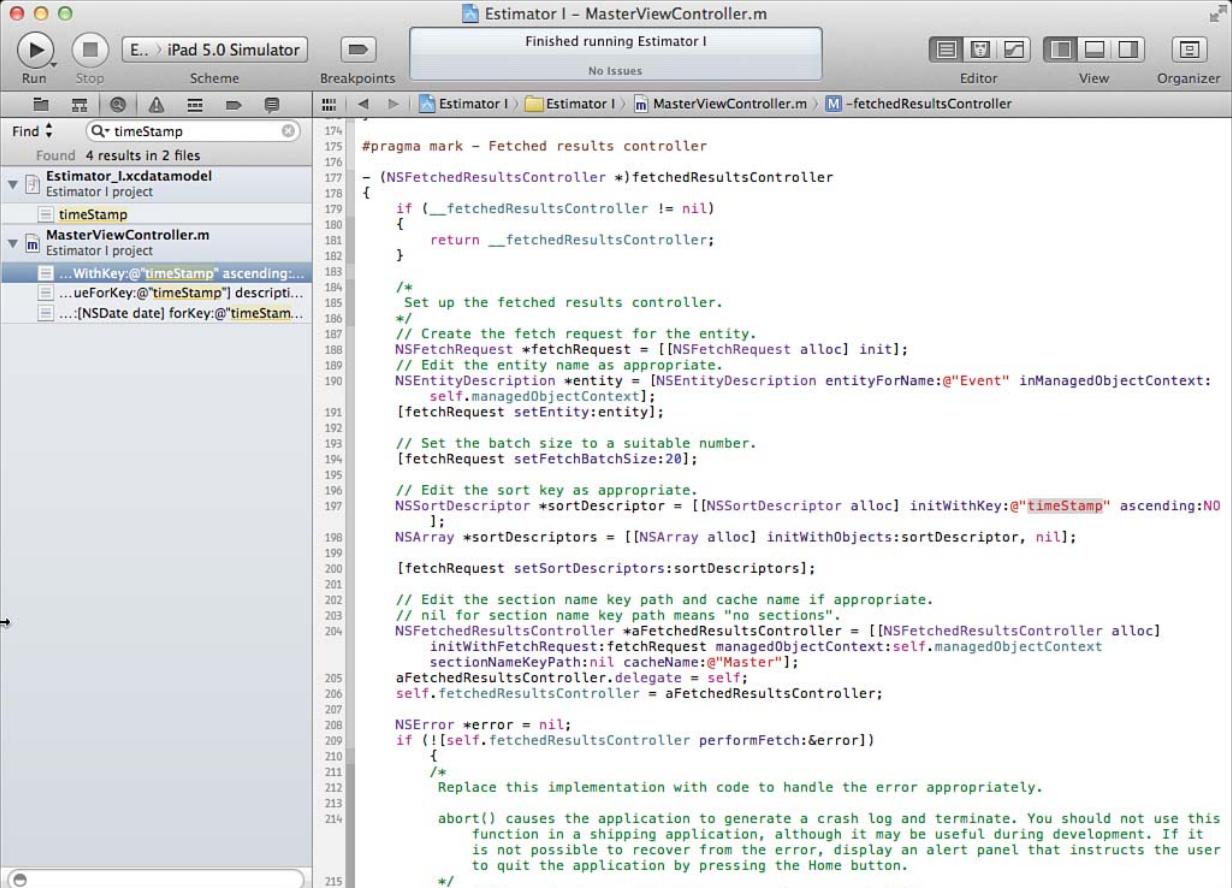


Figure 13.4
Search for occurrences of the old attribute timeStamp.

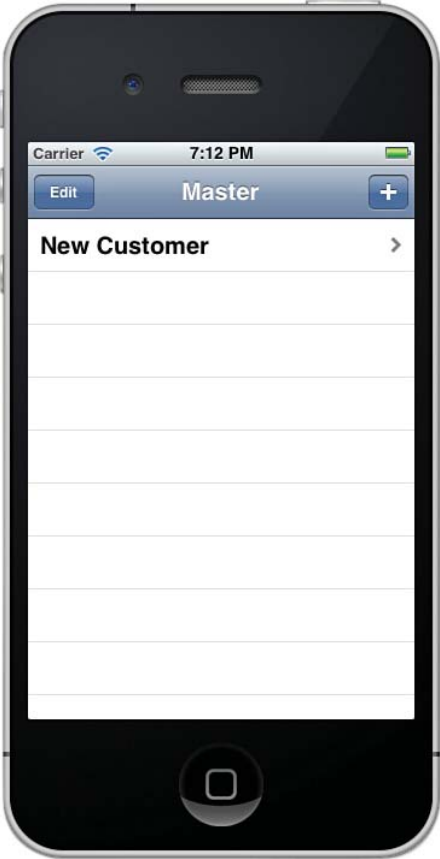


Figure 13.5
Test the app.

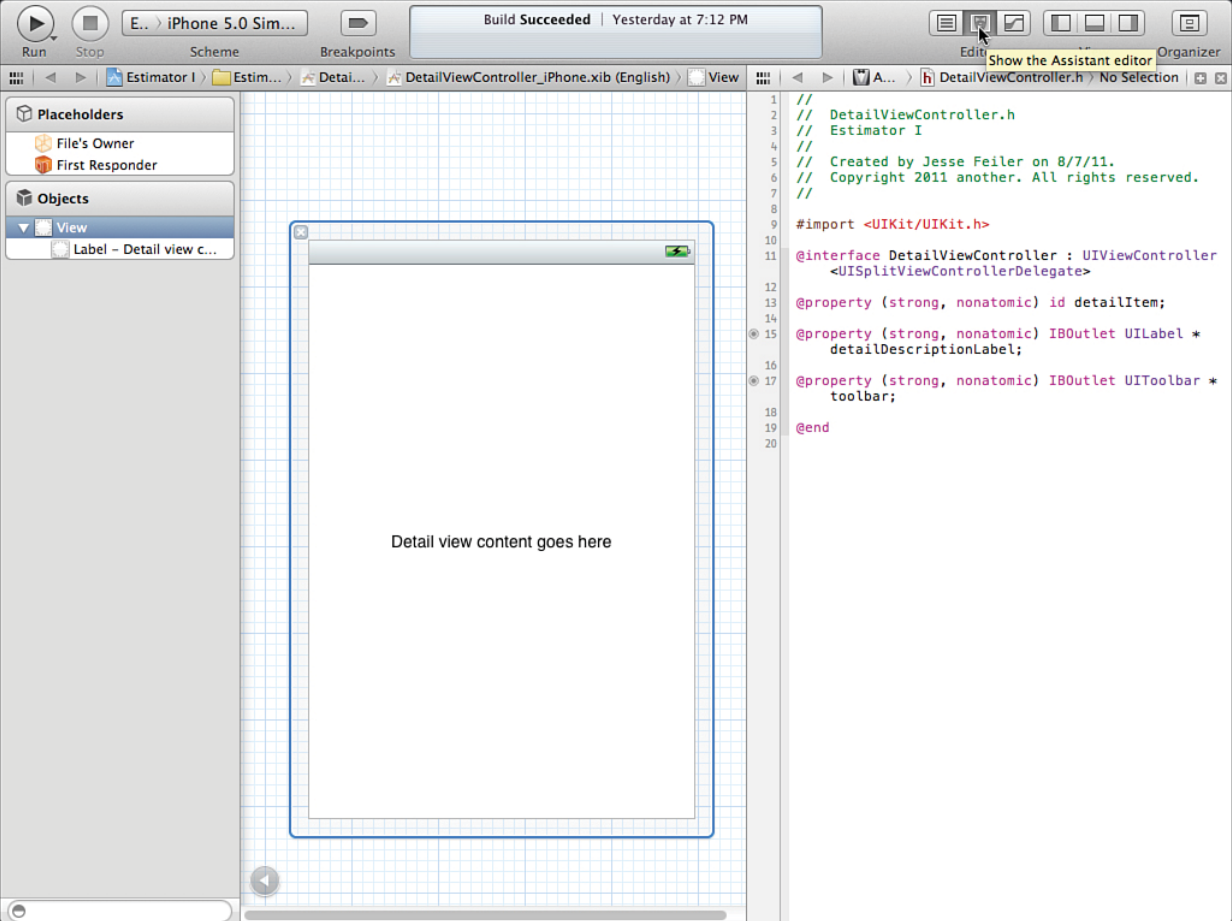


Figure 13.6

Use the Assistant editor to work on two files at the same time.

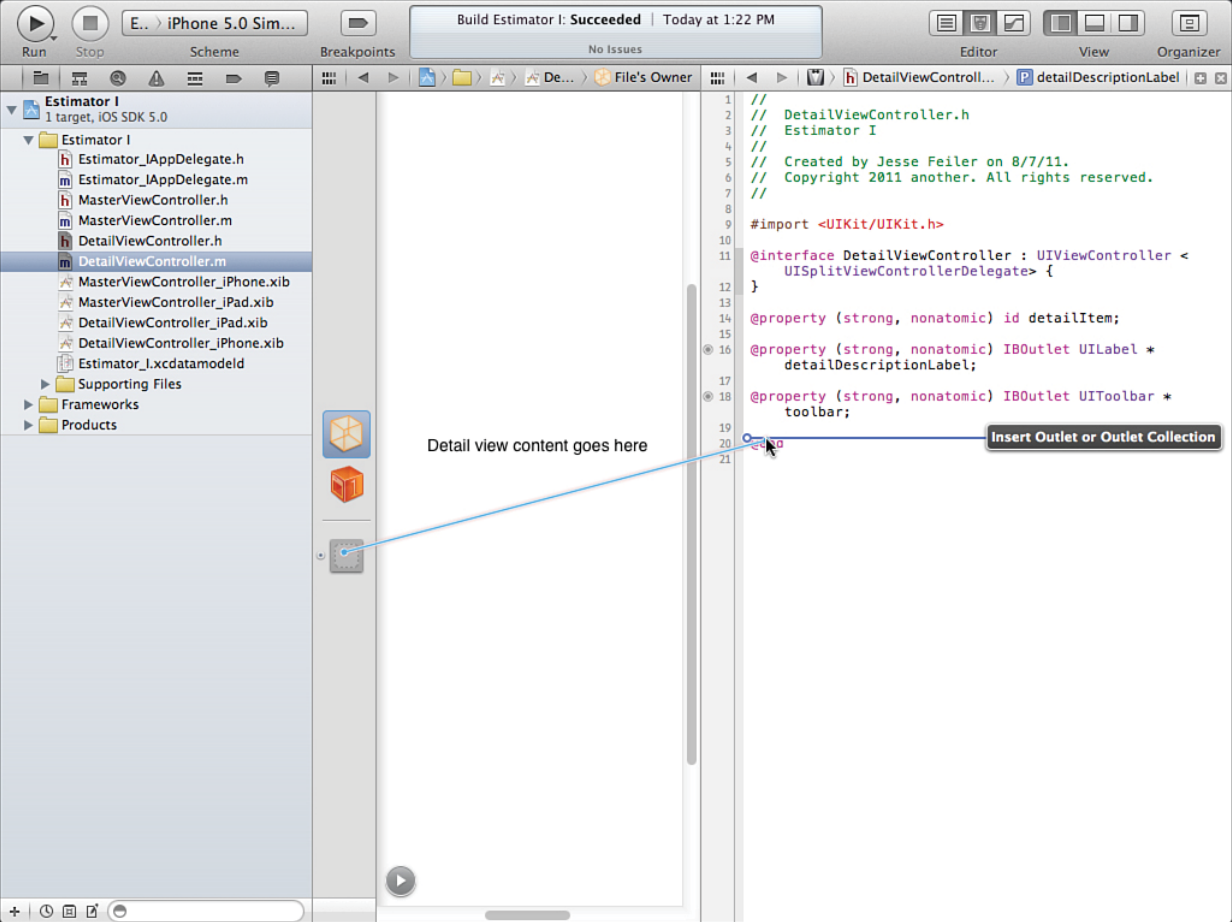


Figure 13.7
Control-drag to start to create a new outlet or outlet collection.

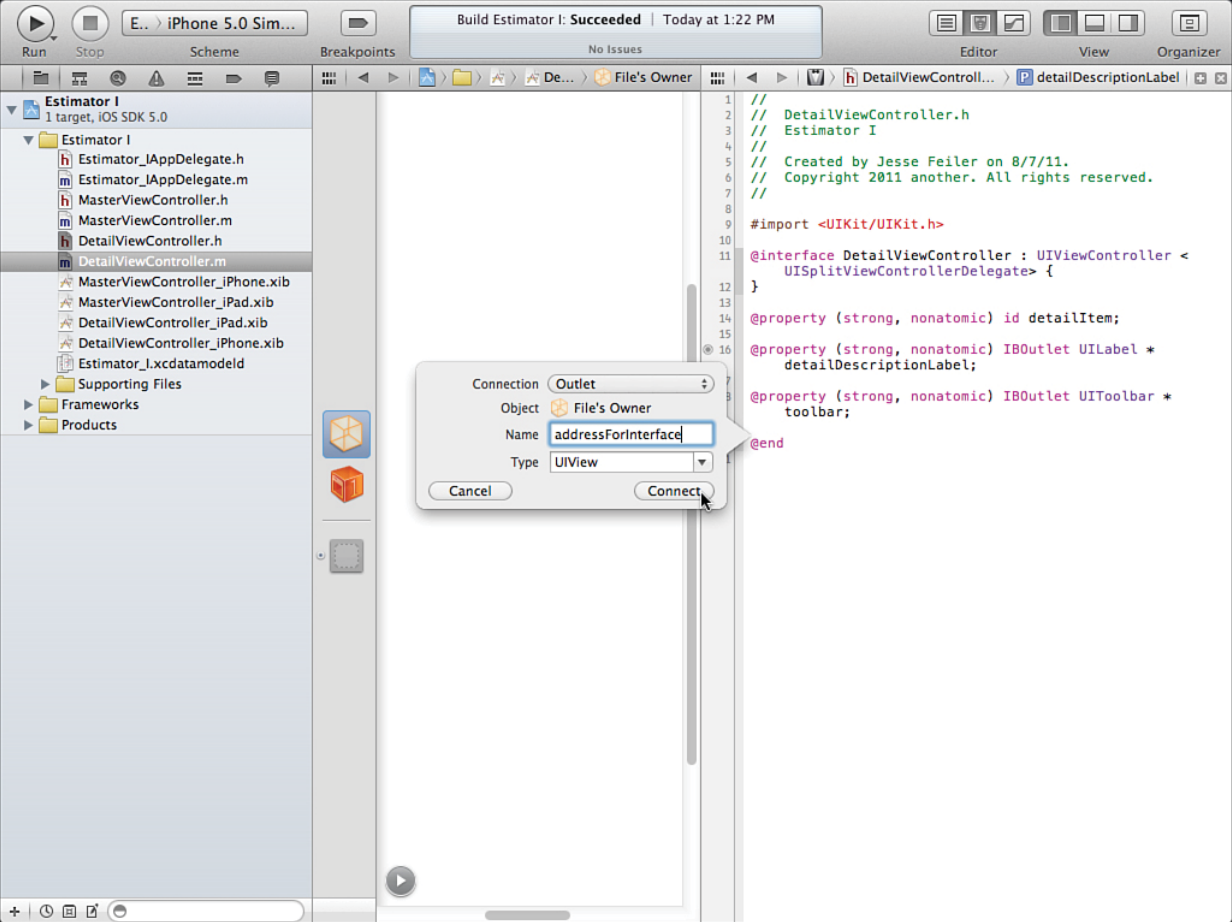


Figure 13.8
Provide details of the new outlet.

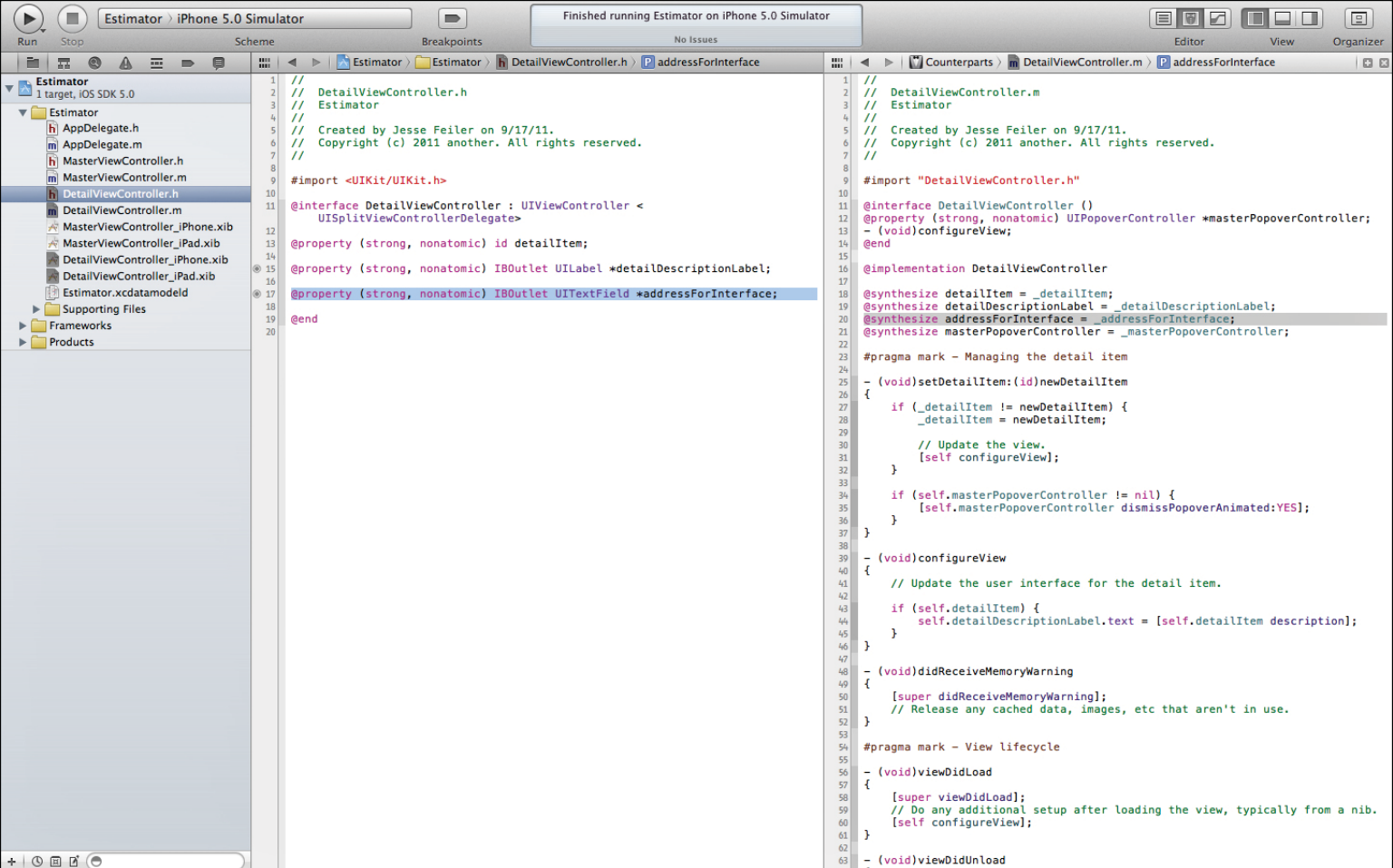


Figure 13.9
Review the generated code.

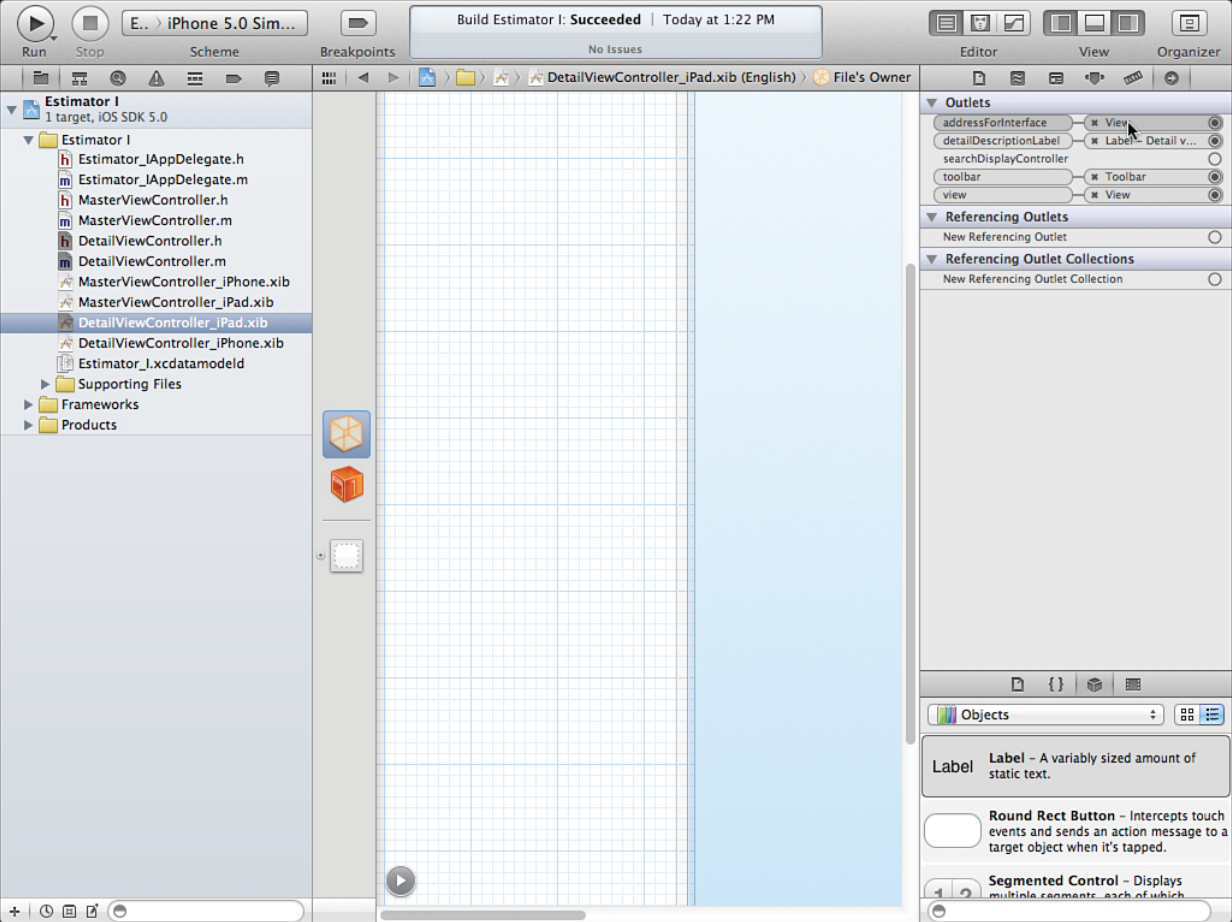


Figure 13.10
A connection is already made for you.