

Figure 7.1
Use Quick Help to look up your code.

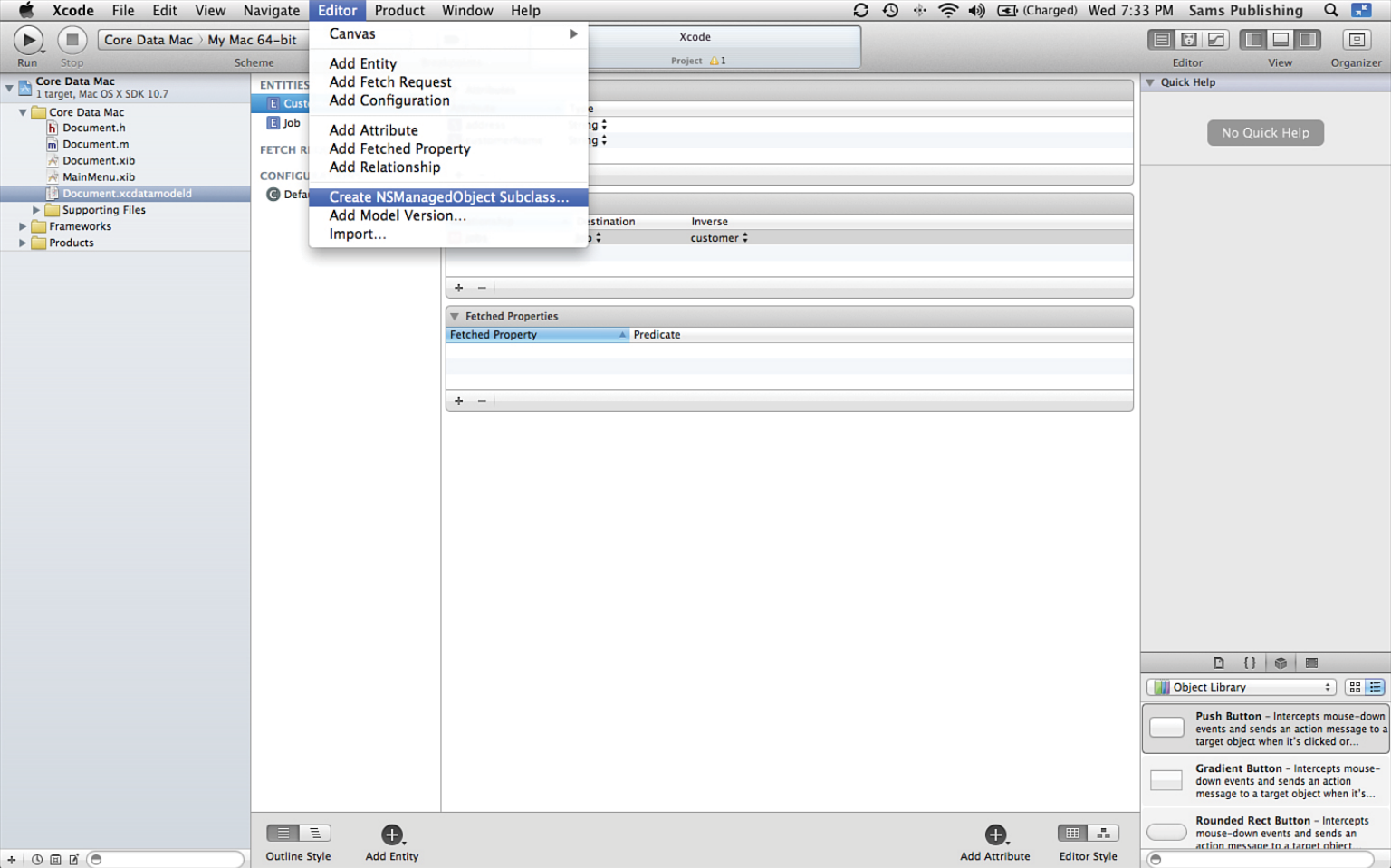


Figure 7.2
Begin to create a subclass.

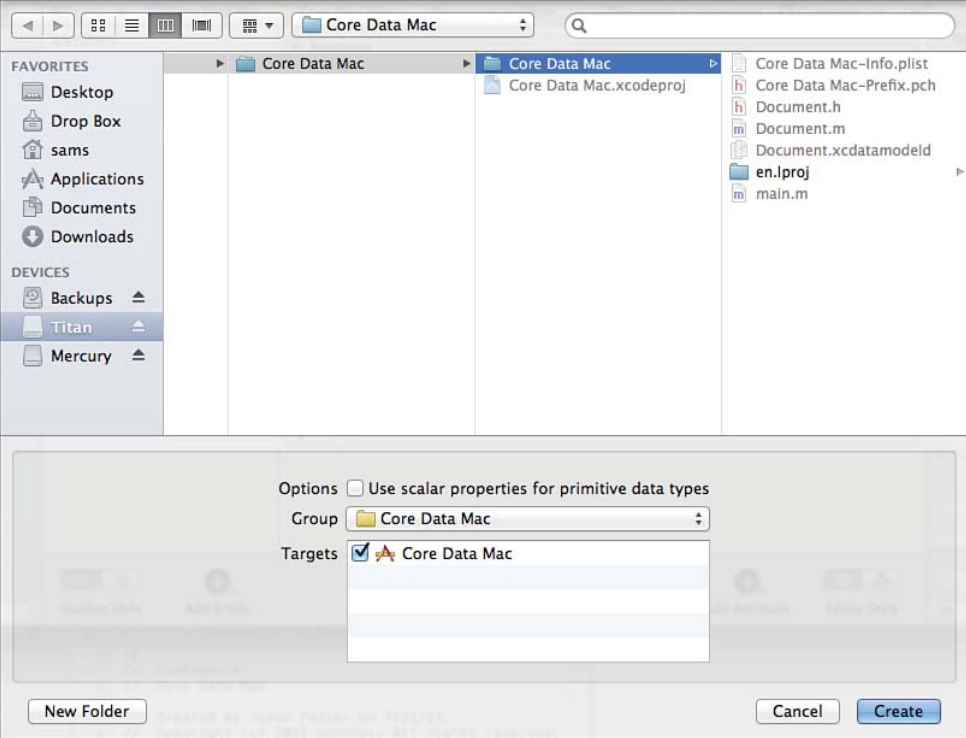


Figure 7.3
Create the subclass.

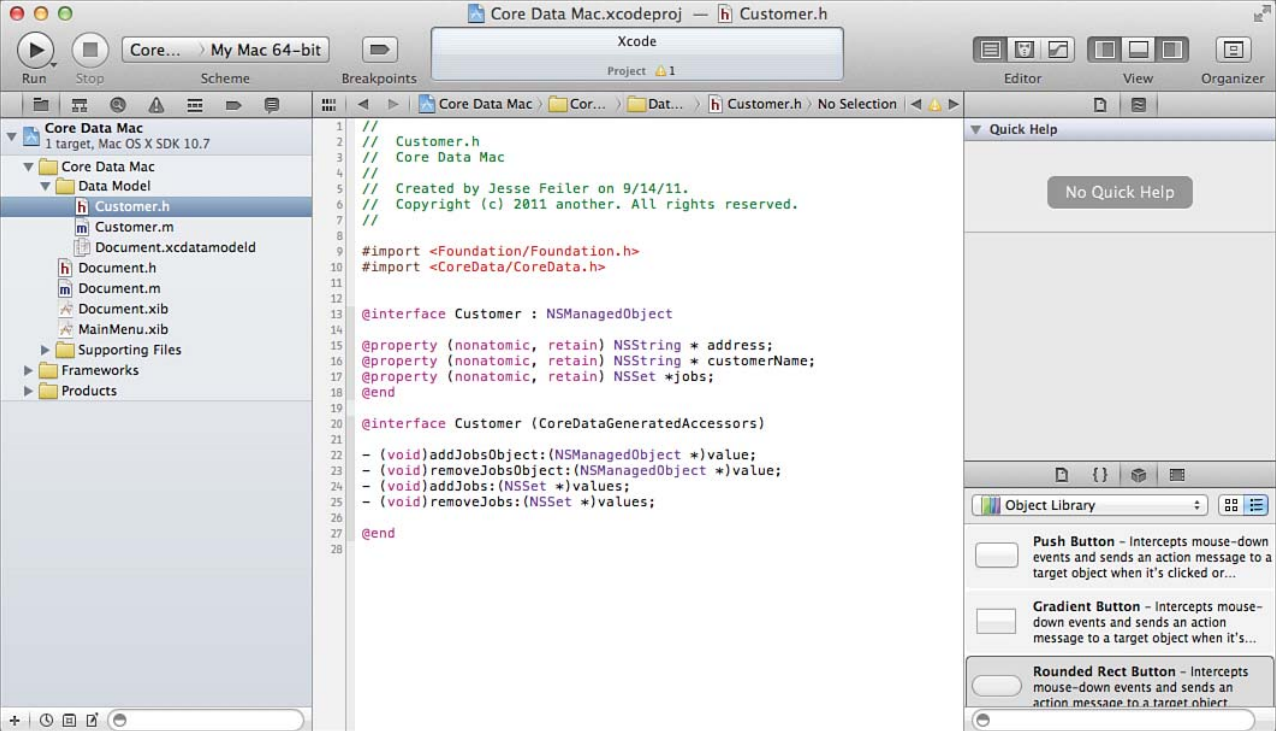


Figure 7.4
Rearrange the files.

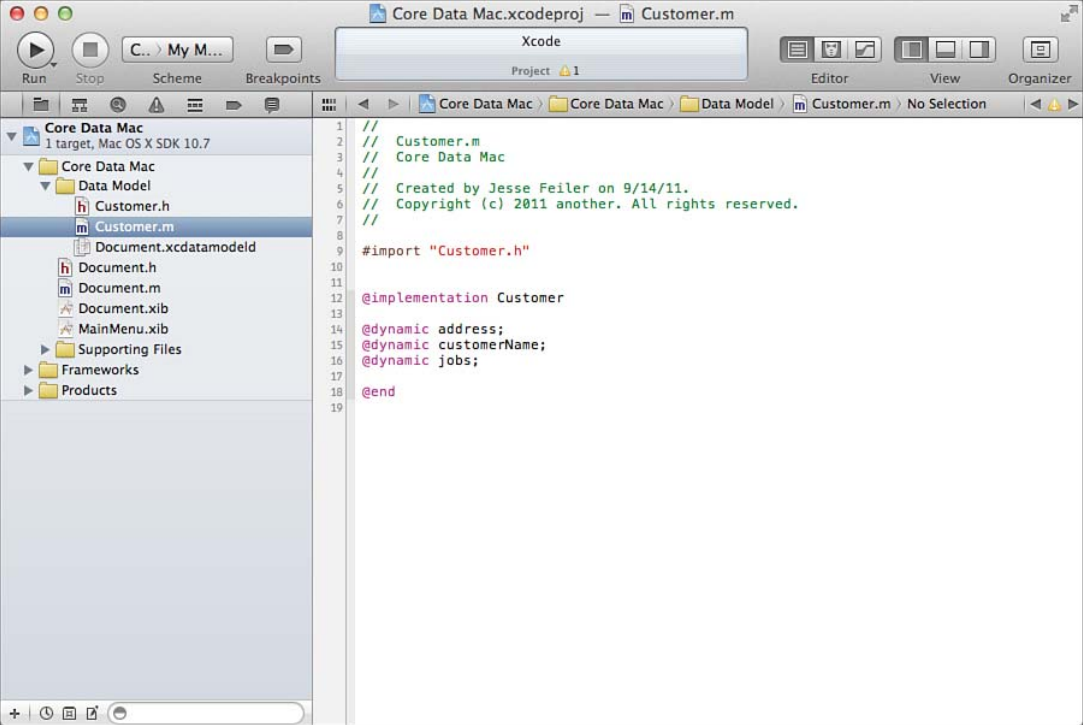


Figure 7.5

Review the implementation of your NSManaged Object subclass.

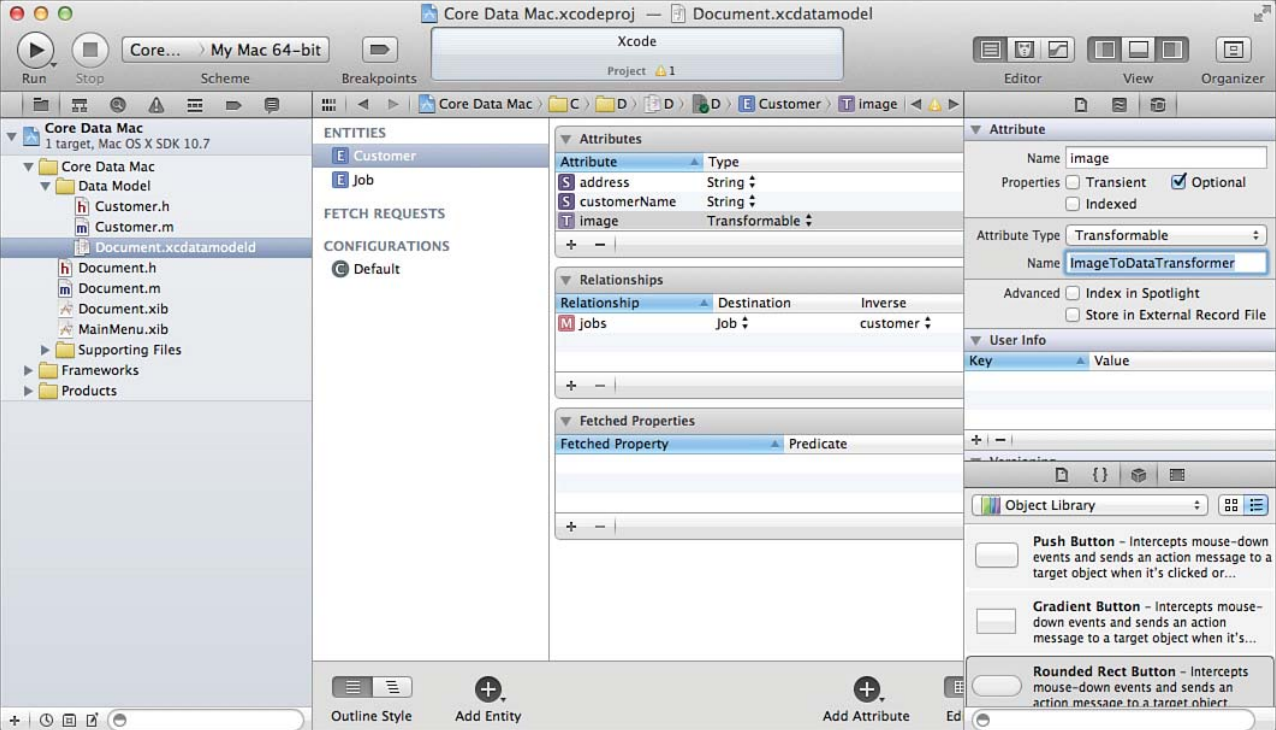


Figure 7.6
Include your transformer code in the Core Data inspector.