

Betsy Bruce
John Ray



Now in **Full Color**

Sams **Teach Yourself**

Adobe®

Dreamweaver® CS4

in **24**
Hours



SAMS

Sams Teach Yourself Adobe Dreamweaver CS4 in 24 Hours

Copyright © 2009 by Sams Publishing

All rights reserved. No part of this book shall be reproduced, stored in a retrieval system, or transmitted by any means, electronic, mechanical, photocopying, recording, or otherwise, without written permission from the publisher. No patent liability is assumed with respect to the use of the information contained herein. Although every precaution has been taken in the preparation of this book, the publisher and author assume no responsibility for errors or omissions. Nor is any liability assumed for damages resulting from the use of the information contained herein.

ISBN-13: 978-0-672-33040-7

ISBN-10: 0-672-33040-7

Library of Congress Cataloging-in-Publication Data

Bruce, Betsy.

Sams teach yourself Adobe Dreamweaver CS4 in 24 hours / Betsy Bruce and John Ray.
p. cm.

ISBN 978-0-672-33040-7 (pbk.)

1. Dreamweaver (Computer file) 2. Web sites—Authoring programs. 3. Web sites—Design. I. Ray, John, 1971- II. Title. III. Title: Adobe Dreamweaver CS4 in 24 hours. IV. Title: Dreamweaver CS4 in 24 hours.

TK5105.8885.D74B782156 2007

006.7'8—dc22

2008042137

Printed in the United States of America

First Printing November 2008

Trademarks

All terms mentioned in this book that are known to be trademarks or service marks have been appropriately capitalized. Sams Publishing cannot attest to the accuracy of this information. Use of a term in this book should not be regarded as affecting the validity of any trademark or service mark.

Warning and Disclaimer

Every effort has been made to make this book as complete and as accurate as possible, but no warranty or fitness is implied. The information provided is on an “as is” basis. The authors and the publisher shall have neither liability nor responsibility to any person or entity with respect to any loss or damages arising from the information contained in this book.

Bulk Sales

Sams Publishing offers excellent discounts on this book when ordered in quantity for bulk purchases or special sales. For more information, please contact

U.S. Corporate and Government Sales

1-800-382-3419

corpsales@pearsontechgroup.com

For sales outside of the U.S., please contact

International Sales

international@pearson.com

Acquisitions Editor

Mark Taber

Development Editor

Songlin Qiu

Managing Editor

Kristy Hart

Project Editor

Anne Goebel

Copy Editor

Cheri Clark

Indexer

Erika Millen

Proofreader

Leslie Joseph

Technical Editor

Scott Antall

Publishing Coordinator

Vanessa Evans

Cover Designer

Gary Adair

Compositor

Jake McFarland

Introduction

There was a time, not long ago, when the idea of using an application to develop websites was considered a travesty! The idea that an application could create code that would be clean, would be efficient, and would display properly in virtually any web browser seemed like pure fantasy.

Dreamweaver has forever changed how we think about web development. It is no longer the realm of the professional programmer. It is no longer a tangled mess of complicated codes and files. With the help of Dreamweaver, web development has become both a structured and a creative process. As a website development environment, it keeps your pages nice and neat and your links in working order. As a visual design tool, it frees you from the complexities of coding and allows you to focus on the content and look and feel of your site.

What is truly unique about Dreamweaver is that it can author virtually any type of website with any appearance. You may have heard someone say, “That site was made with such and such a tool.” In Dreamweaver, the application helps you create your designs as you envision them, rather than trying to force you into a mold.

What Is Dreamweaver CS4?

Dreamweaver CS4 is the latest release of Adobe’s award-winning HTML editor and web application development tool. Dreamweaver offers tools that can be adapted to a very design-centric environment, or a code-centric programming focus. The depth and maturity of the tools ensure that everyone, regardless of their skill level or needs, will be able to use Dreamweaver effectively.

Dreamweaver, like most Adobe products, is fully cross-platform. The Mac OS X and Windows versions of the software offer the same features, with very slight variations in look and feel. Projects that you create in Dreamweaver can easily be shared among Windows and Mac users alike.

Dreamweaver’s openness doesn’t end at the desktop—it extends to the servers it supports, as well. Using the built-in tools, you can create websites that are ready for almost any modern web server—and transfer them to your remote host without ever leaving the application.

Making use of the latest web technologies, Dreamweaver makes it simple to add design elements using Cascading Style Sheets, and dynamic interfaces with Spry AJAX components. These features can help you create a new, modern website, or transform an existing site into a

compelling online experience featuring animation, drag-and-drop elements, drop-down menus, and much, much more!

What's New in This Edition?

In Dreamweaver CS4, Adobe has given Dreamweaver a much-needed spring-cleaning. The application is sleeker, is easier to navigate, and gets rid of older, problematic features. A few of the changes you'll find in this edition are listed here:

- ▶ An updated user interface with callouts for quick reference
- ▶ New CSS features for quickly assigning and working with styles
- ▶ Adobe Photoshop Smart Objects for embedding live Photoshop files in your designs
- ▶ Adobe Bridge, a central hub for managing CS4 suite resources
- ▶ Spry AJAX effects and other third-party AJAX options
- ▶ InContext Editing, Adobe's new hosted content management option
- ▶ Information on gathering web statistics from finished sites
- ▶ New "Try It Yourself" step-by-step guides for testing out some of the most interesting Dreamweaver CS4 features

Dreamweaver never ceases to amaze with the range of features it provides. This update makes those features even more accessible than ever before. As you work through the 24 hours in this book, you'll find information on everything from the basics of site file structures all the way to content management systems and version control.

Who Should Use Dreamweaver CS4?

One word: everyone. First-time web developers will love the ability to visually develop a site using tools that feel natural and provide instant feedback. Experienced developers may choose to start a layout visually and then switch to a code view to finish it off by hand. Dreamweaver gives you the flexibility to work the way you want, without getting in the way.

Who Should Use This Book?

This book is for anyone new to Dreamweaver CS4 and anyone already using the application who wants to take it to the next level. Beginners will quickly learn how to create new pages, create and manage CSS, and deploy websites. More experienced readers will find the tips and tricks they need in order to use the application to its fullest.

Conventions Used in This Book

This book uses several design elements and conventions to help you prioritize and reference the information it contains:

- ▶ New terms appear in a **semibold typeface**.
- ▶ When you are asked to type or enter text, that text appears in **bold**.
- ▶ Menu options are separated by a comma. For example, when you should open the File menu and choose the New Project menu option, the text says “Select File, New Project.”
- ▶ A special monospace font is used on programming-related terms and language, and code.
- ▶ Placeholders—words or characters that represent the real words or characters you would type in code—appear in *italic monospace*.
- ▶ Some code statements presented in this book are too long to appear on a single line. In these cases, a line-continuation character is used to indicate that the following line is a continuation of the current statement.

Hour 3

Setting Up a Website

Dreamweaver makes it very easy to open and edit single web pages—much like you would a word processing document. If you're planning to create multiple pages, however, the very first thing you should do is define a site. That's what you'll do this hour. Defining a site gives you a home base to work from. Without a site definition, Dreamweaver may run into difficulties linking or organizing your files.

You use Dreamweaver's Files panel to plan, create, and manage projects. Eventually you'll have lots of files: web pages (HTML, or hypertext markup language, files), image files, CSS (Cascading Style Sheets) files, and other types of files. It's important that you define your website to start off on the right foot.

Defining a New Website

This hour introduces creating a storage directory for your website and then telling Dreamweaver about it. This directory will be the home of your site, and you'll build a logical structure beneath it with directories to hold supporting files such as images, scripts, and style sheets (more about this in later hours). Many beginning web developers simply start making web pages, skipping the site definition step—this is not recommended. You'll make your web development life easier by completing this important step before any development takes place.

Every website has a root directory. The **root** of a website is the main directory that contains files and other directories. When you define a website, Dreamweaver considers that directory and all the files (or other directories) within it to be the entire universe of that particular website. If you attempt

WHAT YOU'LL LEARN IN THIS HOUR:

- How to define a website by using the Site Definition Wizard
- How to modify a website definition
- How to organize a website

TIP

Directories or Folders?

I (and many other people) use the terms *directory* and *folder* interchangeably. Both terms refer to a named container for files and other directories or folders. If you create a reference to a file in another directory, you must provide the name of the directory (also called a “path”) that contains the file.

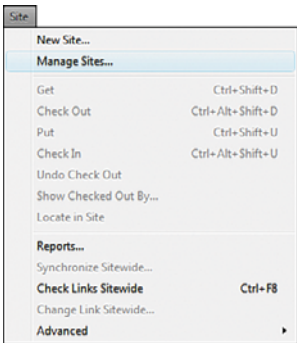


FIGURE 3.1
Select the Manage Sites menu to define a new site in Dreamweaver.

to insert an image from outside that universe, Dreamweaver prompts you to save the file inside the website.

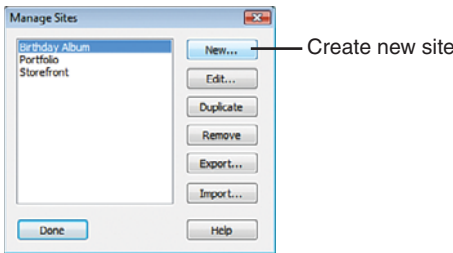
Dreamweaver needs you to define your website so that it knows how to find files. For instance, if an image is located in an `images` directory within the site, Dreamweaver knows how to properly reference the image within a web page. If, however, the image is somewhere outside the defined site, Dreamweaver might not be able to reference it properly, and you might end up with bad links in your website. You learn more about how Dreamweaver links to files in Hour 5, “Adding Links: Hyperlinks, Anchors, and Mailto Links.”

You have to define a new website for every project you create. Even when projects are related, you might decide to break them down into smaller sites so that the number of files isn’t unwieldy in a single site. For instance, I create websites for a college within a major university. Rather than trying to create a single site for the entire college, I find it easier to break down the information into different sites by department. This creates more manageable chunks of information than lumping everything together. Regardless of the size of your site, you can have only a single site open in Dreamweaver at once.

To begin defining a website, open the Manage Sites dialog box by selecting Site, Manage Sites, as shown in Figure 3.1.

The Manage Sites dialog box, shown in Figure 3.2, is where you can create, edit, duplicate, remove, export, and import Dreamweaver site definitions. The title says it all: This is where you manage your websites! To begin defining a new site, click the New button in the Manage Sites dialog box and choose Site. The Site Definition dialog box appears.

FIGURE 3.2
The Manage Sites dialog box lists all the websites you have defined and enables you to manage them.



The Site Definition dialog box is where you name your site and point Dreamweaver to where the files are stored on your computer. You can define a site even if you don’t have any files; you simply define the site in an empty directory that is ready to hold all the web pages you create.

Using the Site Definition Wizard

The Site Definition dialog box, shown in Figure 3.3, has two tabs at the top: Basic and Advanced. You begin by using the settings on the Basic tab, so make sure that tab is selected. The Basic tab contains the Site Definition Wizard, which walks you through the site definition. Later this hour, you learn how to edit your site definition using the Advanced tab in the Site Definition dialog box.

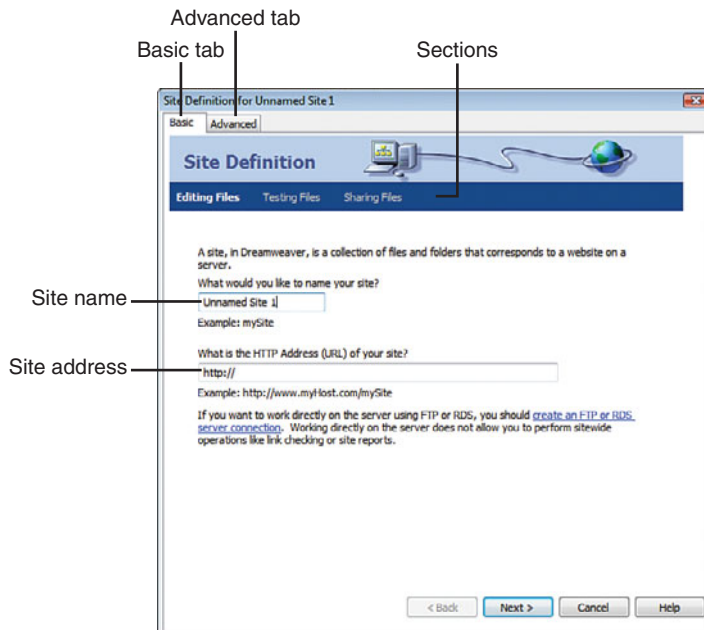


FIGURE 3.3
The Basic tab of the Site Definition dialog box walks you through setting up a site definition.

The Site Definition Wizard has three stages, shown as the section names at the top of the wizard:

- **Editing Files**—This section enables you to set up the local directory where you'll store the website. You tell the wizard whether your site uses server-side technologies. The sites and web pages in this book do not use these technologies, which connect web pages, servers, and often databases.
- **Testing Files**—This section is needed only for sites that use server-side technologies. We can skip over it!

TIP

Open Manage Sites from the Site Menu

You can open the Manage Sites dialog box from the Files panel or from the Site menu. Many of the commands available in the Site menu are repeated in the Files panel so that you can access the commands from either location.

▼ TRY IT YOURSELF

Filling In the First Editing Files Site Setup Section

- **Sharing Files**—This section enables you to tell Dreamweaver how you want to transfer files to a server or another central location to share. You explore this functionality in Hour 22, “Uploading, Sharing, and Managing Website Projects.”

Filling In the Editing Files, Part 1, Section

Make sure that you have the Basic tab selected at the top of the Site Definition dialog box.

Fill in the Editing Files section of the wizard using the following steps:

1. In the Site Definition Wizard (refer to Figure 3.3), give your site a name. This name is used only inside Dreamweaver, so it can be anything you want. The site name should be meaningful—it should identify the purpose of the website when you drop down the Site menu to change sites.

My Dreamweaver installation has about 30 to 40 sites defined at times, so clear names help me quickly find the site I want to edit.
2. If you know the final HTTP address of your site, you can enter it here on the first page of the wizard; it's also fine to leave this empty.
3. Click the Next button.

Filling In the Editing Files, Part 2, Section

The next page of the wizard, Editing Files, Part 2, enables you to specify whether you will be using server-side scripting to create dynamic web pages.

▼ TRY IT YOURSELF

Completing the Editing Files, Part 2 Site Setup Section

Fill in the Editing Files, Part 2, section of the wizard:

1. Your web pages in this book are regular HTML pages, so you should click the top radio button that says No, I Do Not Want to Use a Server Technology, as shown in Figure 3.4.
2. Click the Next button.

TIP

HTML and Dynamic Websites

Although we concentrate on HTML web pages, that doesn't mean they can't be interactive and dynamic experiences for the end user. You learn how to create pages with animation and how to change content later in the book.

Do not use a server technology for the sites you create in this book.

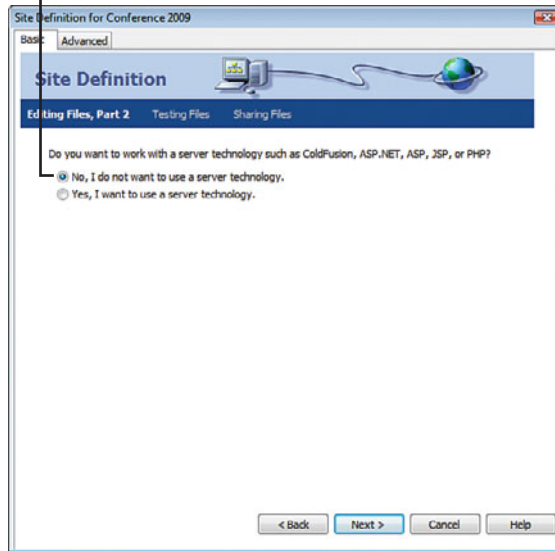


FIGURE 3.4

You indicate whether you will be using server-side scripting in your site.

Filling In the Editing Files, Part 3, Section

The next page, Editing Files, Part 3, helps you specify where the files in your site are located. The site that you are creating here is your **development site**, not the final site that other people will view over the Web. You have to move the files in your development site to a server for people to view the files over the Web (doing so is the subject of Hour 22). The website located on a web server and available to the public is called the **live site**. I always work on an up-to-date copy of a website that is located on my local hard drive. You can store your development files in two places:

- ▶ On your local machine
- ▶ On a network drive

Fill in the Editing Files, Part 3, section like so:

1. Select the top radio button, Edit Local Copies on My Machine, Then Upload to Server When Ready (Recommended), to elect to store the development files on your local machine; this is where most web developers store their files. If you are working in a networked environment (at your office, for instance), you could use the Edit Directly on Server Using Local Network selection.

TRY IT YOURSELF ▼

Completing the Editing Files, Part 3 Site Setup Section

▼ TRY IT YOURSELF

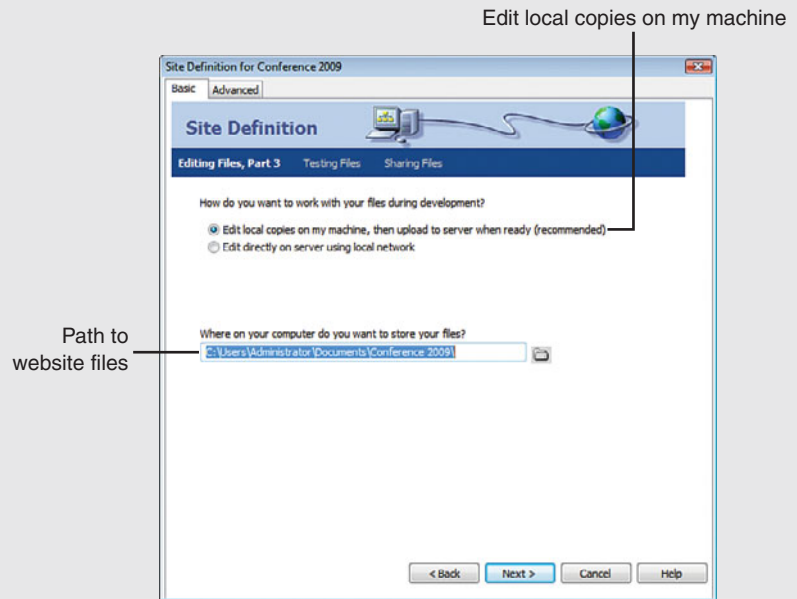
Completing the Editing Files, Part 3 Site Setup Section

continued

FIGURE 3.5

You enter the directory that houses your development files.

- As shown in Figure 3.5, the text box at the bottom of the dialog box asks you to enter the location of the site directory. Click the folder icon to the right of the text box to navigate to the directory where you will store your local site, the files you will work on in Dreamweaver. Either use an existing directory on your hard drive or create a new directory for your site.



- Click the Next button.

CAUTION

Don't Develop on the Live Site

Never edit directly on the final live site during development. You do not want to make a mistake on the real site; always make sure that you are working on a copy of the site.

Filling In the Sharing Files Section

The next section in the Site Definition Wizard enables you to configure how you upload files to a server and share them with the world. You can also set up a central location where members of your team can share files. You learn how to configure remote servers and transfer files in Hour 22. Fill in the Sharing Files section in the following way:

- Drop down the top menu and select None, as shown in Figure 3.6.
- Click the Next button.

Reviewing the Summary

The last page of the wizard displays a summary of your site, as shown in Figure 3.7. You can come back to this wizard at any time to change your site

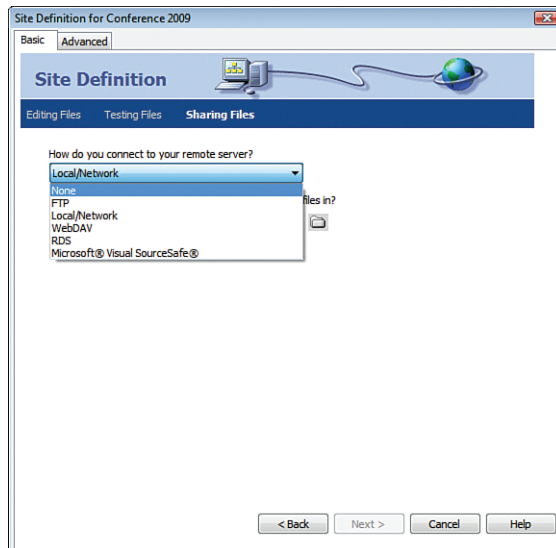


FIGURE 3.6

To set up the remote connection information later, simply select None.

definition by selecting the Edit Sites command from the Site menu (either the one in the Files panel or the one in the Document window). Click the Done button to finish defining your site to finish creating your site definition.

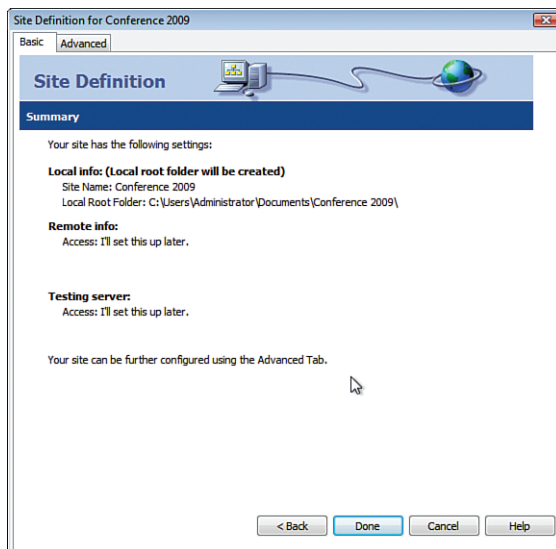


FIGURE 3.7

The Site Definition Wizard displays a summary of your site definition.

Building the Site Cache

After you click the Done button, Dreamweaver displays a message, telling you that it will now create the initial site cache. When you click OK, a

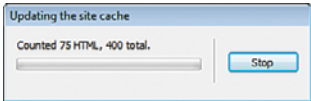


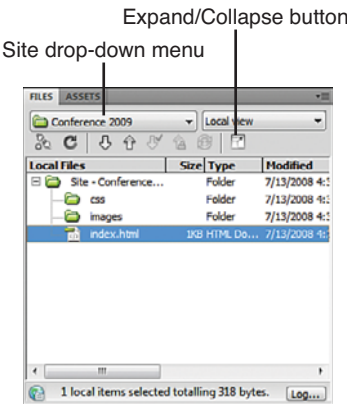
FIGURE 3.8
You might see a progress bar as Dreamweaver creates a cache for your site. This file speeds the updating of links when you move or rename a file.

progress bar like the one in Figure 3.8 appears (and disappears very quickly if you have nothing in your site). The initial site cache is created each time you create a new site. The **site cache** stores information about the links in your site so that they can be quickly updated if they change. Dreamweaver continues to update the cache as you work.

Using the Files Panel

After you’ve defined your site, the site title you specified appears in the Site drop-down menu at the top of the Files panel (shown in Figure 3.9). As you create web pages and save them to your site, they appear in the Files panel. You use the Files panel to open web pages to edit in Dreamweaver. Right now you might not have any web pages in your site, but eventually you’ll want to use the Files panel to create folders to organize the many web pages you’ve created.

FIGURE 3.9
The Files panel enables you to change sites and open web pages.



The Site drop-down menu is where you access the websites you have defined. If you work on multiple projects, you have multiple sites to choose from. For instance, you might have your own personal website defined, plus a site for your child’s school or a site for a client whose website you are creating.

There is no special procedure for importing an existing website into Dreamweaver. If a copy of the existing website exists in a folder on your hard drive, simply define a site in Dreamweaver which points to that folder. That is all you need to do. All the files are available to edit in Dreamweaver, and you can easily modify web pages and then save them. Open a web page by double-clicking the filename listed in the Files panel.

So far you've used the collapsed version of the Files panel, but the next section introduces the expanded version of the Files panel.

Expanding the Files Panel

There is a larger version of the Files panel, available to use when you need to work with files in your site and need access to more site-oriented commands. To open the expanded Files panel, perform the following actions:

1. Click the Expand/Collapse button in the Files panel, shown earlier in Figure 3.9.

The Expanded Files panel, shown in Figure 3.10, is a larger representation of the Files panel and has two panes: Local Files (on the right, by default) and Remote Site (on the left), which you set up in Hour 22. Because you have not yet defined a remote site, you should not have any files in the Remote Site pane at this point.

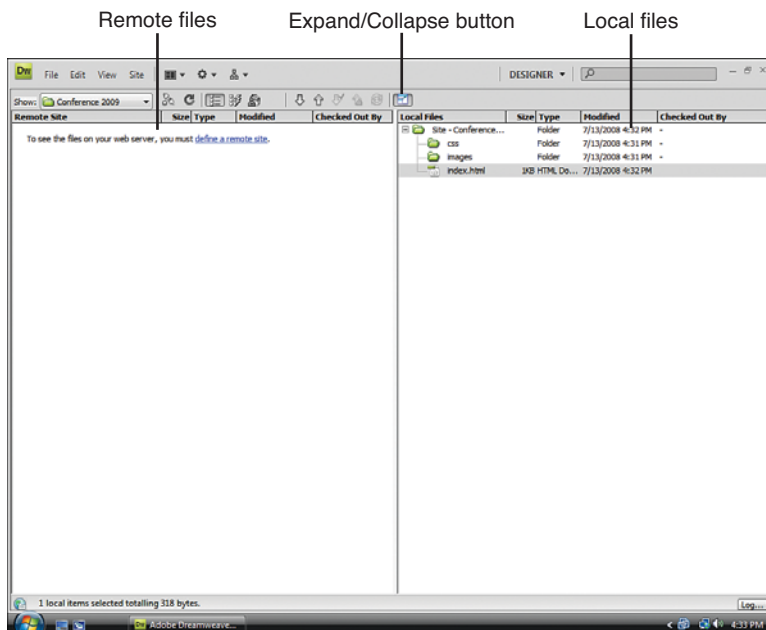


FIGURE 3.10
The Expanded Files panel has two panes: Local Files and Remote Site.

When you click the Files Expand/Collapse button on the Macintosh, the Expanded Files panel opens in a new window. On Windows, it expands to fill the majority of the screen.

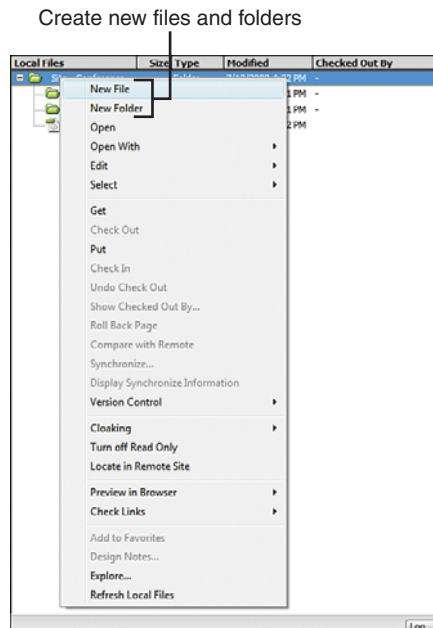
2. Click the Expand/Collapse button again to return to the smaller version of the Files panel.

Creating New Files in the Files Panel

You can create new files and new folders right in the Dreamweaver Files panel. Right-click in the Files panel to open the Files panel menu. This context menu, shown in Figure 3.11, has two commands of interest at the top: New File and New Folder. You use those commands to create files and folders (also called **directories**) in the Files panel.

FIGURE 3.11

The Files panel context menu contains commands to create new folders and files in a website.



▼ TRY IT YOURSELF

Creating an Images Directory

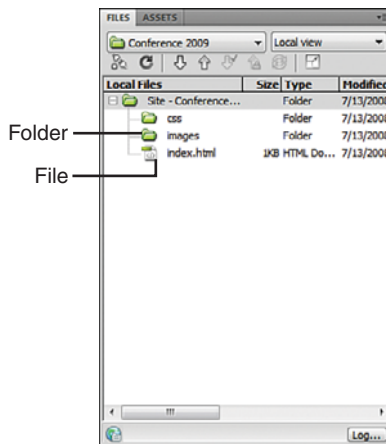
The websites you create need directories for organization; probably every site will at least have an images directory for all the images in the site. To create an images directory, follow these steps:

1. Right-click in the Files panel.
You need to be careful about what is selected when you select the New Folder command so that you do not nest the folder within another folder. To add a folder at the site root, select the top line in the Files panel, which begins with the word *Site*.
2. Select the New Folder command. An untitled folder is added to your site.
3. Name the new folder **images**.
4. Repeat steps 1 and 2 and create a folder called **css**.

Now try adding a new file to your site with these steps:

1. Right-click on the root folder and select the New File command.
2. A new untitled web page is created in the website. Name the web page `index.html`, which is one of the popular default page names for many servers.

Using the **default page name** enables users to find your page more easily by just entering a basic web page address without the specific page appended. Another common default page name is `default.htm`. Both the `.htm` and the `.html` file extensions are acceptable. The `.htm` file extension became popular because the older versions of Microsoft Windows could handle only three-character file extensions; this is no longer a limitation in newer versions of Windows. After you add the new folder and a new file, the site should look as shown in Figure 3.12.



TIP

Name Files Consistently

I think it's a good idea to name everything with lowercase letters. Some servers and scripting languages are case-sensitive. When you name everything with lowercase letters, you don't need to remember whether you used uppercase letters.

FIGURE 3.12

You can add files and folders in Dreamweaver's Files panel.

TIP

A Quick Way to Edit Site Definitions

A fast way to open the Site Definition dialog box is by simply double-clicking the name of the site in the Files panel's Site drop-down menu.

Editing a Site Definition

So far in this hour, you have used the wizard on the Basic tab in the Site Definition dialog box to define a website. Now let's explore the Advanced tab and use it to edit site settings.

To edit the site definition, follow these steps:

1. Open the Manage Sites dialog box again by selecting the Manage Sites command from the Site menu, or by choosing Manage Sites from the File panel's Site drop-down menu.
2. Select the site you just created from the list and then click the Edit button. The Site Definition dialog box opens again.

TRY IT YOURSELF ▼

Editing the Site Definition

▼ TRY IT YOURSELF

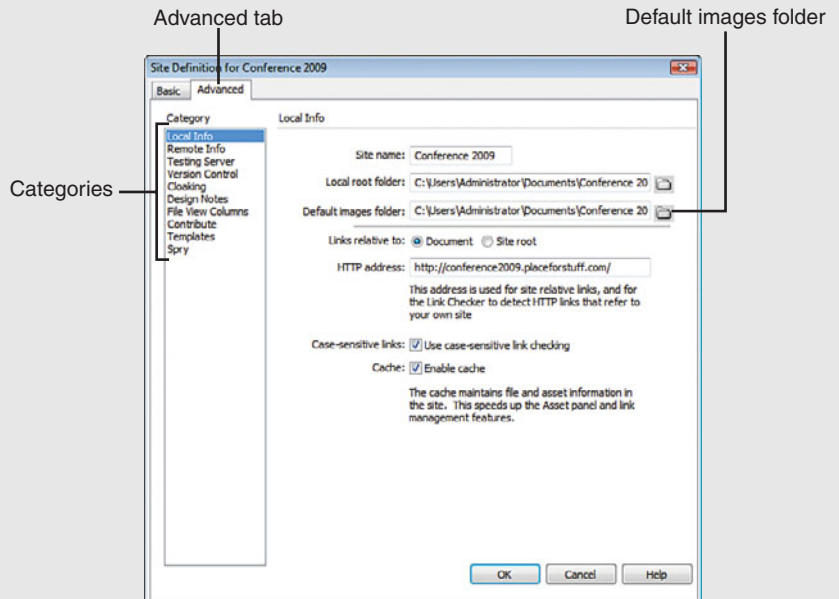
Editing the Site Definition

continued

FIGURE 3.13

The Advanced tab contains all the site properties.

3. Click the Advanced tab at the top of the dialog box. As shown in Figure 3.13, this is another view of the information you entered into the wizard.



The left side of the Site Definition dialog box shows categories, and the right side lists the selected category's properties. Select the Local Info category. Don't some of these fields look familiar? That's because they are the same fields you set up using the wizard.

▼ TRY IT YOURSELF

Setting a Default Images Folder

Set up a default images folder in the Local Info category in this way:

1. Select the folder icon next to the Default Images Folder text box.
2. Navigate to the images folder you just created. Now Dreamweaver knows where you keep your images for the site.
3. Click the OK button to save your changes.
4. Click the Done button to close the Edit Sites dialog box.

TIP

Check Case Sensitivity

In the Advanced tab of the Site Definition dialog box is the Use Case-Sensitive Link Checking check box. If you select this setting, Dreamweaver checks that the links in your site use the same case (uppercase or lowercase) as the filenames. This is very useful if you are eventually uploading your website to a case-sensitive UNIX server.

You learn about other advanced options later in this book. In Hour 22, you set up the Remote Info category in order to upload your files to a remote website. In Hour 23, “Maintaining a Website,” you explore the Cloaking and the Design Notes categories.

Considering Site Organization

There are many opinions about the proper way to organize a website. Some people like to compartmentalize all the files into directories and subdirectories. Some people like to have a very shallow structure, with many files in a single directory. As you get more experienced at web development, you’ll find your ideal method of organization. It’s nice to exchange ideas with other web developers or hobbyists so that you can learn from the successes and failures of others and they can learn from yours.

I have a **Projects** directory on my hard drive, represented in Figure 3.14. The **Projects** directory contains a directory for each project on which I’m working. Within each project directory is a **Web** directory. This is the directory where I keep all the development files for the site and the directory that I set as the root in Dreamweaver.

This directory structure enables me to put other files, such as correspondence, contracts, invoices, and spreadsheets, in the client’s folder without making them part of the website. It’s good practice to keep other files separate from those you plan to transfer to the Web. You might prefer to have one directory that contains all your websites. Do whatever works best for you.

Put some thought into how you’ll organize the files in your website before you start a project. You probably want to create a separate images folder to hold your images, as shown in Figure 3.15. If you have other types of assets, such as sound or video, you might want to create separate folders for those too. I always create a scripts directory to hold external JavaScript files and external Cascading Style Sheets files; you explore these in the later hours of this book.

I try to logically break up sections of websites into separate directories. If your website has obvious divisions (departments, lessons, products, and so on), you can create directories to hold the web pages for each division. You’ll be surprised at how even a small website becomes quickly unmanageable when all the files are dumped into one directory.

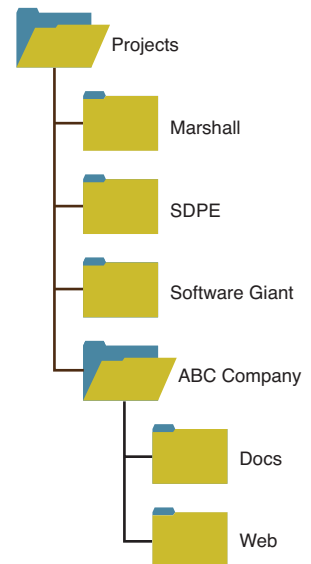


FIGURE 3.14
An example of a directory structure in which the website is housed in the **Web** directory.

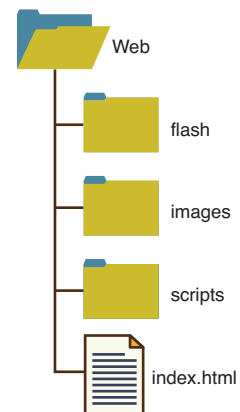


FIGURE 3.15
You can organize your website into images and other directories.

TIP

Plan Now, Benefit Later

It's a good idea to set up a common directory structure even if you aren't anticipating an extensive site. Websites have a way of growing over time. As developers come and go, a standardized structure helps ensure that all of the components of the site can be located and maintained.

Most websites use many image files. If you have different sections in your website, do you want to have separate images directories in each section? It might be a good way to organize your site. Then again, if images are used across multiple sections, it might make the images hard to find. Make sure that your organizational logic isn't going to break down as you add files to your site.

Luckily, if you do have to rearrange assets, Dreamweaver updates any links for you. When you move a file, Dreamweaver asks you whether you want to search and update links to that file. That's what the site cache is created for. However, it is still best to make wise design decisions at the beginning of a big project.

Summary

In this hour, you learned how to define a website and determine its root. You learned how to quickly add files and folders to a site. In addition, you learned how to use the Files panel and expand it into the Expanded Files panel. You also learned how to open a site and edit it using some of the advanced site definition features. And you explored ideas about how to organize a site.

Q&A

Q. How do I import a website into Dreamweaver?

- A.** There is no set procedure for importing a site. You simply define a site exactly as you did this hour, pointing to the root directory of the site you'd like to import. Dreamweaver presents all the files in the Files panel, enabling you to open and edit them. If the site you need to import is on a web server, you first need to read Hour 20, "Creating a Form and Collecting Data," and set up remote site settings pointing to the server.

Q. If I need to move files within my site, is it okay to do it within Dreamweaver?

- A.** If you need to do some housekeeping or rearranging, it's best to do it within Dreamweaver. Dreamweaver automatically updates links to files and warns you if deleting a file will affect other files within your site. Be sure to take care of these tasks within Dreamweaver and not elsewhere; otherwise, you might break links or other dependencies between files in the site.

Workshop

Quiz

1. Why do you need to define a website?
2. What is the purpose of the Files panel?
3. True or false: You must go through a conversion process to import an existing website into Dreamweaver.

Quiz Answers

1. You define a website so that Dreamweaver knows where the root of the site is and what your site management preferences are.
2. The Files panel can be used to create new files and folders, edit existing files, and access site management features.
3. False. No conversion process is necessary to import an existing website into Dreamweaver.

Exercises

1. Try defining a new website. Add some files and folders to the new site. Name one of the files `index.htm`.
2. Search for *Site Map* in Google (<http://www.google.com>) and look at the organization of other sites on the Web. The folders used to store web pages might or might not reflect the same structure outlined in the site map. Click some of the pages and look at the folder structure in the URLs.
3. Open up the Site Definition dialog box and explore the other categories in the Advanced tab (Design Notes or Cloaking, for instance). We cover the other categories in upcoming hours.

INDEX

Symbols

- <> (angle brackets), 19
- * (asterisk), 12
- . (period), 114
- # (pound sign), 114
- / (slash), 98

A

- Absolute Bottom image alignment (Property Inspector), 165
- Absolute Middle image alignment (Property Inspector), 165
- absolute paths (hyperlinks), 94-96
- accessibility
 - alternate text, 162
 - definition of, 161
 - forms, 404
 - long descriptions, 162
 - tables, 248-249
- Accessibility settings (Table dialog box), 248-249
- accessing Spry framework, 374
- accordions, 383
- Acrobat Reader, 213
- Action property (forms), 402
- actions, 348, 357
- Active link color option (Page Properties dialog), 102
- ActiveX controls, 208
- Add Separator button (Insert bar, Favorites category), 481
- Add to Favorites button (Assets panel), 235
- Adobe Bridge, 198
- Adobe Dreamweaver CS4 Unleashed (Ruvalcaba), 434
- Adobe Exchange website, 473, 482-483
- advanced handhelds, 295-297
- Advanced tab (Site Definition dialog box), 445, 448
- AIFF file format, 208, 215
- AJAX (Asynchronous JavaScript and XML), 373
 - definition of, 373
 - external AJAX libraries, 394-396
 - overview, 373-374
 - Spry framework
 - accessing, 374
 - accordions, 383
 - capabilities of, 374-376
 - collapsible panels, 383
 - data sets, creating, 389-394
 - effects, 378-381
 - external JavaScript and CSS files, 376-378
 - Repeat Lists, inserting, 390
 - Spry panel CSS, editing, 386
 - tabbed panels, 381-382
 - ToolTips, 384-385
- alerts, 142
- Align menu (Property Inspector), 164

aligning

- hotspots, 175-176
- table cells, 253-254
- text in web pages, 86

alignment icons (Property Inspector), 86**Alt menu (Property Inspector), 162**

alt text. *See* alternative text

alternative content to Flash media, 211**alternative style sheets (CSS), 282****alternative text**

- adding to images, 161-163
- Missing Alt Text report option (Reports menu), 162

anchors (named), 103-104

- as invisible elements, 104
- linking to, 105
- Point-to-File icon (Property Inspector), 106-108

animating AP divs, 344-345**anti-aliasing text, 191****AP divs**

- advantages of, 346
- animating, 344-345
- background colors/images, 340-341
- banner divs, 266
- creating, 337
- definition of, 336
- Drag AP Element behavior, 350, 365-369
- Eye icon column header, 342

hidden AP divs

- applying behaviors to, 370
- creating, 357
- inserting, 265-266
- multiple AP divs, selecting, 339
- naming, 338-339
- nesting, 337, 342-343
- overlaps, 339
- positioning, 339
- preferences, setting, 337-338
- resizing, 338
- Set Text of Container behavior, 351, 363-364
- Show-Hide Elements behavior, 351, 356-357
- stacking orders, 341
- visibility, changing, 336, 341-342
- Z-index property, 336

AP divs category (Preferences dialog box), 337**AP Elements panel**

- naming AP divs, 339
- Prevent Overlaps check box, 342
- selecting AP divs, 339

Appear/Fade effect (Spry), 378-381**Appearance (CSS) settings (Page Properties dialog box), 75-78****applets (Java), 222-224****Application bar, 27****Apply button (Assets panel, Template category), 300****Apply Comment drop-down menu option (Coding toolbar), 144****Apply Source Formatting command, 149****Apply Source Formatting option (Clean up Word HTML dialog box), 153****applying**

- class selectors (CSS), 117
- CSS styles, 85

ASP scripts, 433**ASP.NET scripts, 433****assets, 227**

- adding to web pages, 234-235
- color assets, 231
- copying to websites, 239
- creating, 237-239
- definition of, 227
- editing, 239
- favorites
 - creating, 235-236
 - deleting from, 236
 - organizing, 236
- image assets, 230-231
- link assets, 231-232
- listing, 229
- lists, jumping to items in, 235
- managing, 228-229
- movie assets, 232
- previewing, 230
- script assets, 232-233
- viewing by category in Assets panel, 229

Assets panel. See also assets

- Add to Favorites button, 235
- Color category, 231
- Delete Library Item button, 300
- Edit button, 300
- functions of, 228-229
- Image category, 230-231
- Insert button, 300
- Library category
 - commands, 303
 - creating library items, 299
 - Update Current Page command, 307
 - Update Site command, 307
- Movies category, 232
- New Favorites Folder button, 236
- New Library Item button, 300
- overview, 227
- Refresh Site List button, 300
- Remove from Favorites button, 236
- Scripts category, 232-233
- Templates category
 - Apply button, 300
 - commands, 310
 - creating templates, 299
- Update Current Page command, 315
- Update Site command, 315
- URLs category, 231-232

asterisk (*), 12

Asynchronous JavaScript and XML.

See AJAX

attributes

- of tags, 138
- of text fields, 405-407

audio files

- deleting parameters, 218
- editing parameters, 218
- embedded players, 219-221
- file formats, 214-215
- finding, 213
- links, 219
- looping, 217
- multiple parameters, 218
- parameters list, 217
- Play Sound behavior, 352
- streaming, 207
- web pages
 - adding to, 213-214
 - playback controls, 216

authoring tools, 20**Auto Indent option (View Options menu), 142****automatic indent, 142****Autoplay option (Property Inspector), 210****AVI files, 208****avoiding spam, 107-108****B****Background category (CSS Rule Definition dialog box), 118-120****backgrounds**

- AP divs, 340-341
- cells, 254
- color, 77
- images, 77
- Spry menu bars, 330

backup templates, 309**Balance Braces option (Coding toolbar), 143****bandwidth, 207****banner divs, 266****Baseline image alignment (Property Inspector), 165****Basic tab (Clean up Word HTML dialog box)**

- Apply Source, 153
- Clean Up CSS option, 153
- Fix Invalidly Nested, 153
- Remove All Word, 152
- Show Log on Completion, 153

Beatnik file format, 215**behaviors, 13, 348**

- adding
 - to actions, 357
 - to web page objects, 354-355, 362
- applying to hidden AP divs, 370
- Behaviors panel, 349

- Call JavaScript, 350
- Change Property, 350
- Check Browser, 352
- Check Plugin, 350
- Control Shockwave, 352
- definition of, 348
- deprecated behaviors, 351-352
- Drag AP Element, 350, 365-369
- editing, 359
- Effects, 350
- execution order, changing, 363
- Go to Timeline Frame, 352
- Go to URL, 350, 364-365
- hidden AP divs, creating, 357
- Hide Pop-Up Menu, 352
- hyperlinks
 - attaching to, 357
 - null links, 356
- Jump Menu, 350
- Jump Menu Go, 350
- Open Browser Window, 350, 360-361
- Play Sound, 352
- Play Timeline, 352
- Popup Message, 350, 362
- pre-installed behaviors list, 349-351
- Preload Images, 351
- Set Nav Bar Image, 351
- Set Text of Container, 351, 363-364
- Set Text of Frame, 351

- Set Text of Status Bar, 351
- Set Text of Text Field, 351
- Show Pop-up Menu, 352
- Show-Hide Elements, 351, 356-357
- Stop Timeline, 352
- Swap Image, 13, 351
- Swap Image Restore, 351
- templates, 315
- trigger events, setting, 359
- triggering with buttons, 370
- Validate Form, 351, 421-424
- Behaviors panel, 349. See also behaviors**
 - Show Events For menu, 353
 - versus Server Behaviors panel, 355
- blank values (lists), 413**
- Blind Up/Down effect (Spry), 378**
- Block category (CSS Rule Definition dialog box), 118-120**
- <blockquote> tag, 92**
- blurry images, sharpening, 168**
- <body> tag, 139-141**
- Book menu (References panel), 153-154**
- Border category (CSS Rule Definition dialog box), 118, 122**
- Bottom image alignment (Property Inspector), 165**
- Boutell, Tom, 297**
- Box category (CSS Rule Definition dialog box), 118, 121**

- box elements, 345**
- box model (CSS), 259-261**
-
 tag, 73**
- breadcrumbs, 101, 322**
- Bridge (Adobe)**
 - adding file metadata, 202-203
 - advantages, 205
 - Bridge Home, 204
 - browsing files, 200-201
 - Favorites panel, 201
 - file metadata, 203
 - filtering files based on metadata, 203
 - Get Photos from Camera feature, 204
 - Image Editing feature, 204
 - Image Searches feature, 204
 - overview, 198-199
 - previewing files, 201-202
 - user interface, 199-200
- Brightness and Contrast tool, 168**
- broadband connections, 207**
- broken links, fixing, 464**
- browsers**
 - Check Browser behavior, 352
 - CSS requirements, 111
 - events
 - definition of, 348
 - displaying information on, 348-349
 - onBlur, 353
 - onChange, 353

- onClick, 354
- onFocus, 354
- onLoad, 354
- onMouseDown, 354
- onMouseOver, 354
- onMouseUp, 354
- onSelect, 354
- onSubmit, 354
- overview, 352-353
- support for, 353
- Firefox, 89
- Internet Explorer, 208
- multimedia files, 208
- new windows, opening, 332, 360-361
- Open Browser Window behavior, 350, 360-361
- TTS browsers, 161-162, 248-249
- web pages, previewing, 89-91
- browsing files with Adobe Bridge, 200-201**
- bulleted lists, 87**
- buttons**
 - adding to forms, 413-415
 - generic, 413
 - Go, 418
 - Image, 413
 - None, 413-415
 - radio buttons, 408-409
 - Reset, 413
 - states, 323, 333
 - Submit, 413-414
 - triggering behaviors with, 370
- C**
- cache, building, 57
- Café Press, 12**
- Call JavaScript behavior, 350**
- Cascading Style Sheets. See CSS**
- case-sensitivity, 69**
- cells (tables)**
 - aligning contents of, 253-254
 - headers, 248
 - layout tables, 254
 - merging, 252-253
 - moving backward in, 249
 - padding, 248
 - selecting, 245
 - selecting groups of, 245
 - spacing, 248
 - splitting, 252-253
 - td tag, 244
- centering page content, 274-275**
- certificates (servers), 431**
- CGI scripts, 426-427**
- Change Link Sitewide command (Files panel), 464**
- Change Properties behavior, 350**
- changing, 267**
- Char Width attribute (text fields), 406**
- check boxes, 409-410**
- Check Browser behavior, 352**
- Check In/Check Out, 447-450, 455**
- Check Page menu (Document toolbar), 43**
- Check Plugin behavior, 350**
- checked values, 409**
- choosing**
 - fonts, 8
 - hosting providers, 435
- Class property (forms), 402**
- class selectors, 86**
 - applying, 117
 - creating, 115-117
 - removing, 117-118
- classes (CSS)**
 - applying, 117
 - creating, 115
- Clean Up CSS option (Clean up Word HTML dialog box), 153**
- Clean up Word HTML dialog box, 152-153**
- cleaning up HTML created with Word, 151-153**
- Clear History command (History panel), 480**
- Clear property (CSS), 265**
- Clear setting (CSS Rule Definition dialog box), 122**
- clearing floating elements, 272-273**
- client-side script, 415**
- Clip setting (CSS Rule Definition dialog box), 123**
- Cloaking feature, 309**
- closing panels, 46**
- Code Coloring category (Preferences dialog box), 148**
- Code Format category (Preferences dialog box), 149-150**

Code Hints category (Preferences dialog box), 150

Code Inspector, 144

Code Navigator, 144-145

code preferences

code hints, 150

color preferences, 148

formatting preferences, 149-150

rewrite preferences, 151

Word documents, cleaning up in, 152

Code Rewriting category (Preferences dialog box), 151

code validation, 154-155

Code view, 42

Coding toolbar, 142-144

View Options menu, 141-142

Coding toolbar, 142-144

ColdFusion, 12, 433

Collapse Full Tag option (Coding toolbar), 143

Collapse Selection option (Coding toolbar), 143

collapsible panels, 383

Collapsible Panels widget (Spry), 383

collapsing panel groups, 45-46

color

assets, 231

background color

AP divs, 340-341

setting global properties, 77

code preferences, 148

custom colors, 76-77

of hyperlinks, 102

library item highlights, 305

of Spry menu bars, 330

Syntax Coloring option (View Options menu), 142

text color

global properties, 76

selecting via Text Color text box (Property Inspector), 84

value identification software, 77

websafe colors, 230

Color category (Assets panel), 231

Color Picker, 76-77, 102, 186

Color setting (CSS Rule Definition dialog box), 120-122

ColorCop, 77

columns

adjusting width, 252

creating, 251, 270-272

displaying width of, 244

Eye icon header, 342

removing, 250

selecting, 245

setting number of, 244, 247

commands

deleting, 480

recording, 478-479

renaming, 480

running, 480

Commands menu, 25

comments, 144

Common category objects (Insert panel), 29-32

common gateway interface, 427

Compare command (Synchronize command), 463

compound selectors, 126, 269

configuring Subversion version control, 452-453

conflicts, 290-291

Connect/Disconnect button (Files panel), 446

content management

Contribute, 316

InContext Editing, 316-317

overview, 315

context menus, 47

contrast (images), 168

Contribute (Adobe), 316, 467

Control Shockwave behavior, 352

converting inline styles, 144

copying

assets to websites, 239

image maps, 173

images in Photoshop, 192

copying/pasting text to web pages, 70-71

copyright laws, 7

Crop tool, 168

cropping images via Photoshop, 183-185

CSS (Cascading Style Sheets)

box model, 259-261

browser requirements, 111

built-in sheets, 406

- classes
 - applying, 117
 - creating, 115
- Clean Up CSS option (Clean up Word HTML dialog box), 153
- creating for handheld devices
 - Device Central, 295
 - Handheld style sheet, 294
 - iPhone and advanced handhelds, 295-297
 - overview, 294
- creating for mobile devices
 - alternative style sheets, 282
 - external style sheets, 282-285
 - media attribute, 279-281
 - previewing style rendering, 281-282
- creating for print
 - adding print-only messages, 293-294
 - hiding elements, 286-289
 - hiding hyperlinks, 291-293
 - identifying style conflicts, 290-291
 - modifying default fonts, 289-290
 - overview, 286
- CSS-Positioning, 112, 259
- CSS Rule Definition dialog box, 118-124
- CSS Styles panel, 112-114
- external style sheets
 - creating from scratch, 129-130
 - importing style into, 128-129
 - linking to, 284-285
 - media type, setting, 282-284
 - saving styles in, 130
- overview, 9
- page layouts
 - browser display of, 277
 - centering page content, 274-275
 - Clear property, 265
 - clearing floating elements, 272-273
 - columns, 270-272
 - compound selectors, 269
 - creating, 261-262
 - divs, 265-266
 - Float property, 265
 - floating page elements, 269-270
 - id selectors, 266
 - page margins, 267
 - tracing images, 268-269
 - view options, 263-264
- previewing style rendering, 281-282
- and Property Inspector, 131
- rules, 113
- selectors
 - class selectors, 86, 115-118
 - compound selectors, 126
 - definition of, 113-114
 - tag selectors, 124-125
- Spry panel CSS, editing, 386
- styles
 - applying, 85, 117
 - creating, 115-116
 - deleting, 85
 - editing, 127-128
 - inheritance, 132-133
 - moving, 128-129
 - naming, 115
 - placing definitions in, 115
 - precedence, 132
 - redefining HTML tags, 124
 - removing from objects, 117-118
 - renaming, 85
 - settings, 118-124
 - viewing, 81, 84
 - styling text with, 112-114
 - templates, 315
 - uses of, 111
- CSS Rule Definition dialog box, 118-120, 122, 124**
- CSS Styles panel, 9, 112-114. See also CSS styles**
 - CSS Rule Definition dialog box, 118-124
 - Edit Style button, 127-128
- .csv file extension, 197**
- Cursor setting (CSS Rule Definition dialog box), 123**
- custom colors, creating, 76-77**
- custom guides**
 - adding to layout tables, 275
 - creating, 275

custom snippets

- creating, 473-476
- keyboard shortcuts, 478

Customize Favorites command (Insert bar), 481**customizing**

- bulleted lists, 87
- menu bars, 327-328
- numbered lists, 87

D**data sets (Spry), 389-394****.dcr files, 210****Default image alignment (Property Inspector), 165****Delete command (Synchronize command), 463****Delete Library Item button (Assets panel), 300****deleting**

- asset favorites, 236
- columns (tables), 250
- CSS styles, 85, 117-118
- forms, 415
- recorded commands, 480
- rows (tables), 250
- sound file parameters, 218
- synchronized files, 462

delimited data files, 198**delimiters, 255****dependent files, 450****deprecated behaviors, 351-352****deprecated tags, 82****design notes**

- author information, 466
- Contribute (Adobe), 467
- web pages, adding to, 465-466

Design view, 42, 139**Detach from Original button (Property Inspector), 305****development sites, 55****Device Central, 295****DHTML (Dynamic HTML), 335-336****directories**

- definition of, 52
- parent directories, 98
- root, 51
- SpryAssets, 376
- Templates, 308

disabling extensions via Extension Manager, 483**Display setting (CSS Rule Definition dialog box), 121****displaying**

- AP divs
 - Show-Hide Elements behavior, 351, 356-357
- assets by category in Assets panel, 229
- event information, 348-349
- HTML tag hierarchies (tables), 245
- library item attributes, 305

<div> tag, 336**divs. See AP divs****docking panels, 46****doctitle, 311****doctype tag, 69, 138****document-relative paths (hyperlinks)**

- definition of, 94
- examples of, 96-98

Document toolbar, 42-43**document type declaration, 138****Document window, 42****Code view**

- Coding toolbar, 142-144
- View Options menu options, 141-142

Design view, 139**Flash files, 211****Shockwave files, previewing, 211****Split Code view, 138, 141****Split view, 142-144****Status bar, 44-45****Tab groups, 22****toolbar, 42****Welcome screen, 21-22****domains**

- names, 94
- as URL components, 95

down() function, 345**downloading**

- multimedia players, 208
- templates, 308

Drag AP Element behavior, 350, 365-369

DreamHost, 435

Dreamweaver Exchange, 134

Dreamweaver menu, 26

drop-down menus, 413

Dynamic HTML (DHTML), 335-336

dynamic web pages

definition of, 12

server-side scripting, 433

E

Edit button (Assets panel), 300

Edit Image Settings option, 168

Edit menu commands, 23

Edit Style button (CSS Styles panel),
127-128

Edit Tag mode (Quick Tag Editor), 146

Edit tool, 168

editable regions (templates)

creating, 310

highlight color, adjusting, 311

layers, 311

making existing regions, 310-311

making new editable
regions, 311-313

naming, 311

optional regions, 311-313

placement of, 312

editing

assets, 239

behaviors, 359

CSS styles, 127-128

default fonts, 289-290

history steps via History
panel, 479

images, 167-168

keyboard shortcuts, 476-477

library items, 306-307

menu bars, 329-332

navigation bars, 325

page margins, 267

sound file parameters, 218

tags, 145-147

templates, 314

website definitions, 61-62

Editing Files section (Site Definition
Wizard), 53-56

editors, associating with file
extensions, 167

effects (Spry)

adding to rollover images,
192-193

Appear/Fade effect, 380-381

Effects behavior, 350

overview, 378

removing, 380

Squish effect, 379-380

Effects behavior, 350

email spam, avoiding, 107-108

Email Link dialog box, 109

Email Link object, 107

embedded audio players, 219-221

Embedded Media HTML
Generator, 218

embedding server-side scripts in web
pages, 434

Enable Design Notes option (Site
Definition dialog box), 465-466

Encoding command, 81

Enctype property (forms), 402

errors, syntax error alerts, 142

events, 348

browser support, 353

definition of, 348

information, displaying, 348-349

onBlur, 353

onChange, 353

onClick, 354

onFocus, 354

onLoad, 354

onMouseDown, 354

onMouseOver, 354

onMouseUp, 354

onSelect, 354

onSubmit, 354

overview, 352-353

trigger events, 359

Excel

file extensions, 197

importing table data from,
197-198, 205

Expand All option (Coding
toolbar), 143

Expand/Collapse button (Files
panel), 446

expanding

- Files panel, 59
- panel groups, 45-46
- Property Inspector, 47

Export Table dialog box, 255**exporting**

- table data, 254-255
- web pages from page layout software, 9

Extensible Hypertext Markup Language. See XHTML**Extension Manager, 482-483****Extensible Markup Language. See XML****extensions, file. See file extensions****extensions, software, 337**

- Adobe Exchange website, 473, 482-483
- definition of, 351
- disabling via Extension Manager, 483
- installing via Extension Manager, 482-483
- overview, 134

Extensions category (CSS Rule Definition dialog box), 119, 123**external AJAX libraries**

- Lightview, 394-396
- overview, 394

external links, 464**external style sheets**

- creating from scratch, 129-130
- importing styles into, 128-129

linking to, 284-285

media type, setting, 282-284

saving styles in, 130

Eye icon column header, 342**F****favorites**

- creating, 235-236
- deleting, 236
- favorites lists, 481
- organizing, 236

Favorites category (Insert bar), 481**Favorites panel (Adobe Bridge), 201****feathering image edges via Photoshop, 185-186****fields**

- hidden fields, 429
- text fields
 - adding to forms, 403-404
 - attributes, 405-407
 - Text Field AutoClear snippet, 407
 - Validation text fields (Spry), 424-425

<fieldset> tag, 416**fieldsets, adding to forms, 416****file extensions**

- .AIFF, 208
- .AVI, 208
- .csv, 197
- .dcr, 210

editors, associating with, 167

.JPEG, 166, 171

.GIF, 166

.lbi, 302

.lck, 449

.MOV, 208

.PNG, 167

.prn, 197

sound formats, 214-215

.swf, 210

.WAV, 208

file locations (websites), specifying, 55**file management**

- Check In/Check Out, 447-450, 455
- Select Newer Local command (Files panel), 460
- Select Newer Remote command (Files panel), 460
- Synchronization command (Files panel), 461-462

File Management menu (Document toolbar), 43**File menu commands, 23****file sharing (websites), 56****File Types/Editors option (Preferences dialog box), 167****file:/// prefix, 231, 240****filenames as URL components, 95****files**

- browsing with Adobe Bridge, 200-201
- creating, 60-61

- dependent files, 450
 - extensions. *See* file extensions
 - filtering based on metadata, 203
 - help files, 47-48
 - metadata
 - adding with Adobe Bridge, 202-203
 - definition of, 202
 - moving within websites, 64
 - naming, 61, 69
 - orphaned files, 464-465
 - previewing with Adobe Bridge, 201-202
 - saving, 69
 - synchronized files, deleting, 462
 - synchronizing on local and remote sites, 459-463
 - transferring
 - dependent files, 450
 - to remote sites, 449
 - updating, 315
 - XML files, 388
- Files panel, 445. *See also* files**
- Change Link Sitewide command, 464
 - Connect/Disconnect button, 446
 - creating new files in, 60-61
 - Expand/Collapse button, 446
 - expanding, 59
 - functions of, 58-59
 - Get button, 446
 - Put button, 446
 - Refresh button, 446
 - Select Newer Local command, 460
 - Select Newer Remote command, 460
 - Synchronize command, 461-462
- Filter setting (CSS Rule Definition dialog box), 124**
- filters, 192-193**
- Find and Replace dialog boxes, 484-485**
- finding sound files, 213**
- Firefox, 89, 208**
- firewalls, 442**
- Fix Invalidly Nested and Unclosed Tags check box, 151**
- Fix Invalidly Nested Tags option (Clean up Word HTML dialog box), 153**
- Flash files, 209**
- alternative content, 211
 - as sound files, 215
 - assets, 232
 - file extensions, 210
 - looping, 210
 - previewing, 211
 - quality settings, 211
 - resizing, 212
 - support websites, 214
- Float property (CSS), 265**
- Float setting (CSS Rule Definition dialog box), 121**
- floating page elements, 269-270**
- folders, 52**
- tag, 82, 485**
- Font-family setting (CSS Rule Definition dialog box), 119**
- Font-size setting (CSS Rule Definition dialog box), 119**
- Font-style setting (CSS Rule Definition dialog box), 119**
- Font-variant setting (CSS Rule Definition dialog box), 119**
- Font-weight setting (CSS Rule Definition dialog box), 119**
- fonts**
- choosing, 8
 - modifying default fonts, 289-290
 - pixels versus points, 75
 - selecting, 82-83
 - of Spry menu bars, 330
 - web pages, 75
- Form Delimiter option (Preferences dialog box), 399**
- form-hosting websites, 427**
- Form ID property (forms), 402**
- <form> tag, 404**
- Format menu (Property Inspector), 72**
- Format Source Code drop-down menu option (Coding toolbar), 144**
- formatting**
- Apply Source Formatting option (Clean up Word HTML dialog box), 153
 - code preferences, 149-150
 - forms, 402

text

- applying CSS styles, 85
- deleting CSS styles, 85
- renaming CSS styles, 85
- viewing CSS styles, 84
- in web pages, 72-73

FormMail script, 428-429**forms**

- accessibility, 404
- adding
 - to buttons, 413-415
 - to web pages, 401-402
- check boxes, 409-410
- CSS. *See* CSS
- definition of, 399
- deleting, 415
- elements, designating as required, 423
- fieldsets, 416
- files, uploading, 431-432
- form-hosting websites, 427
- formatting, 402
- hidden fields, 429
- insertion points, 404
- jump menus, 416-418
- labels, 415
- List/Menu objects, 411-413
- lists, 411-413
- menus, 411-413
- objects, naming, 406
- outlines, viewing, 399
- packets, 430

processing

- CGI scripts, 426-427
- FormMail script, 428-429
- GET method, 427
- parsing data, 426-427
- POST method, 427
- server-side scripts, 434-435

properties, 402

radio buttons, 408-409

search forms, 11

selecting, 402

submissions, 430

Text Field AutoClear snippet, 407

text fields

- adding, 403-404
- attributes, 405-407
- multi line fields, 406
- password fields, 406
- single line fields, 406
- sizing, 407

Textarea objects, 407

Validate Form behavior, 351

validating, 12

- with Spry Validation text field, 424-425
- with Validate Form behavior, 421-424

Forms category objects (Insert panel), 35-37**Forms section (Snippets panel), 413****forward slash (/), 98****frames**

- Go to Timeline Frame behavior, 352
- Set Text of Frame behavior, 351

FreeScripts, 427**FTP access**

- firewalls, 442
- Passive FTP, 445
- proxy servers, 442
- remote sites, 441-442
- server connections, 445

full paths, 94**function calls, 347****functions**

- definition of, 347
- down(), 345
- MM_swapImage(), 347

G**generic buttons, 413-415****Get button (Files panel), 446****Get command (Synchronize command), 463****GET method, 427-450****Get Photos from Camera feature (Adobe Bridge), 204****GIF file format, 166****global properties, setting in web pages, 74-75**

- background, 77
- headings, 79

- page fonts, 75
- page margins, 78
- text color, 76
- Go buttons, 418**
- Go to Timeline Frame behavior, 352**
- Go to URL behavior, 350, 364-365**
- Google Analytics, 468-471**
- grammar checking, 70
- graphics. *See* images
- groups
 - check box groups, 410
 - radio button groups, 408-409
- Grow/Shrink effect (Spry), 378**
- guides
 - in images, 189
 - in layout tables, 275-276

H

- H Space, 165**
- Hand tool, 44**
- handheld devices, CSS (Cascading Style Sheets)**
 - Device Central, 295
 - Handheld style sheet, 294
 - iPhone and advanced handhelds, 295-297
 - overview, 294
- hard drives, saving web pages to, 6**
- Head Content option (Design view), 139**
- <head> tag, 139-141**

- header cells (tables), 248
- headers (web pages), 115
- Heading 1 through Heading 6 option (Property Inspector), 72**
- headings (web pages), 79
- Headings settings (Page Properties dialog box), 79
- Height setting (CSS Rule Definition dialog box), 121-123
- Help, 27, 47-48**
- hidden AP divs
 - applying behaviors to, 370
 - creating, 357
- hidden characters, displaying, 142
- Hidden Characters option (View Options menu), 142**
- hidden fields, 429
- Hide Panels/Show Panels command, 45**
- Hide Pop-up Menu behavior, 352**
- hiding
 - AP divs, 351, 356-357
 - elements through CSS, 286-289
 - hyperlinks, 291-293
 - panels, 45, 138
- high resolution files, 169**
- Highlight effect (Spry), 378**
- Highlight Invalid Code option (Coding toolbar), 143**
- Highlight Invalid HTML option (View Options menu), 142**
- hints (code), 150

- History panel**
 - Clear History command, 480
 - commands, saving, 479
 - history steps, editing, 479
- home pages (websites), 96**
- horizontal rules, 88**
- HostGator, 435**
- hosting providers, 435**
- hotspots, 172**
 - aligning, 175-176
 - creating, 174-175
 - overlapping, 176
- .htm extension, 69**
- .html extension, 69**
- HTML (Hypertext Markup Language), 6, 335**
 - cleaning up HTML created with Word, 151-153
 - definition of, 6
 - overview of, 19
 - Roundtrip HTML, 20
 - tags, 138
 - behaviors, 357
 - redefining via CSS styles, 124
 - searches, 485
 - tables, 245
 - text within tags, searching, 486
 - validating code, 154-155
 - viewing in web browsers, 6
- HTTP requests, 426**

hyperlinks

- absolute paths, 94-96
- adding to websites, 99-101
- assets, 231-232
- behaviors, attaching to, 357
- breadcrumbs, 322
- broken links, fixing, 464
- color preferences, 102
- definition of, 93, 322
- document-relative paths
 - definition, 94
 - examples, 96-98
- external links, 464
- hiding, 291-293
- image maps
 - copying/pasting, 173
 - creating, 173
 - definition of, 172
 - hotspots, 172-176
 - naming, 173
- Link Checker, 464-465
- linked images, 172
- mailto links, 107-108
- managing, 463-465
- named anchors, 103-105
- null links, 356
- to PDF files, 212-213
- site root-relative paths
 - definition, 94
 - examples, 98
- to sound files, 219
- targeted links, opening new web browser windows, 332
- text, incorporating into, 99
- underline, turning on/off, 103, 134
- updating, 463
- URLs, changing, 464
- web page examples, 8

Hypertext Markup Language.
See HTML

ICE (InContext Editing), 316-317

id selectors, 266

Ignore command (Synchronize command), 463

Image buttons, 413-415

Image category (Assets panel), 230-231

Image Editing feature (Adobe Bridge), 204

image maps

- copying/pasting, 173
- creating, 173
- definition of, 172
- hotspots, 172
 - aligning, 175-176
 - creating, 174-175
 - overlapping, 176
- naming, 173

Image Preview dialog box, 171

Image Searches feature (Adobe Bridge), 204

Image Size dialog box, 185

images

- adding to web pages, 159-163
- alternative text, adding, 161-163
- assets, 230-231
- background images
 - AP divs, 340-341
 - setting global properties, 77
- copying in Photoshop, 192
- creating via Photoshop
 - adding shapes, 190-191
 - adding text, 188-189
 - setting resolution, 187
 - sizing images, 187
- cropping via Photoshop, 183-185
- editing, 167-168
- feathering edges via Photoshop, 185-186
- file formats
 - GIF, 166
 - JPEG, 166
 - PNG, 167
- guides, 189
- image maps
 - copying/pasting, 173
 - creating, 173
 - definition of, 172
 - hotspots, 172-176
 - naming, 173
- linked images, creating, 172

- linking in Lightview, 396
- optimization software, 169
- optimizing for web pages, 168-171
- organizing, 240
- pixelated images, 171
- placeholder images, 310
- Preload Images behavior, 351
- previewing, 160-161
- properties, 163
- resizing via Photoshop, 183-185
- restoring, 178
- reverting in Photoshop, 187
- rollover effects, 13, 177, 192-193, 323-325
- rotating via Photoshop, 183-185
- Set Nav Bar Image behavior, 351
- sliced images, 194
- Smart Objects, 195-197
- spacer images, 256
- spacing (web page elements), adjusting, 165
- Swap Image behavior, 351
- Swap Image Restore behavior, 351
- text, aligning with, 164
- tiling, 341
- tracing images, 268-269
- undoing changes in Photoshop, 187
- web page examples, 8
- Import Tabular Data dialog box, 197-198**
- importing**
 - CSS styles into external style sheets, 128-129
 - existing websites to remote sites, 451
 - images into web pages, 159-163
 - table data, 197-198, 205, 254-255
 - templates, 308
 - websites, 64
- InContext Editing (ICE), 316-317**
- InContext Editing category objects (Insert panel), 38**
- Indent button (Property Inspector), 87-88**
- Indent Code option (Coding toolbar), 144**
- indenting**
 - automatic indent, 142
 - Indent button (Property Inspector), 87-88
 - Indent Code option (Coding toolbar), 144
- inheritance of CSS styles, 132-133**
- inline styles, converting, 144**
- Insert After text box (Snippets panel), 476**
- Insert bar, 481**
- Insert Before text box (Snippets panel), 476**
- Insert Block radio button (Snippets panel), 474-475**
- Insert button (Assets panel), 300**
- Insert HTML mode (Quick Tag Editor), 147**
- Insert Jump Menu dialog box, 417**
- Insert menu, 24**
- Insert Navigation Bar dialog box, 323-324**
- Insert panel**
 - objects
 - Common category, 29-32
 - Forms category, 35-37
 - InContext Editing category, 38
 - Layout category, 33-35
 - Spry category, 37-38
 - Text category, 39-41
 - overview, 27-28
- Insert Rollover Image dialog box, 177**
- Insert Spry Repeat List dialog box, 390**
- insertion points, 404**
- inspectors, 144**
- installing**
 - extensions via Extension Manager, 482-483
 - Lightview, 395-396
- interactivity, 13-14**
- Internet Explorer, 208**
- invalid code preferences, highlighting, 142**
- invisible elements, turning on/off, 104-105**
- Invisible Elements category (Preferences dialog box), 399**

iPhone, 295-297

item labels (lists), 412

item values (lists), 412

J-K

Java applets

adding to web pages, 222-224

versus JavaScript, 222

JavaScript

actions, 348

Call JavaScript behavior, 350

client-side script, 415

function calls, 347

functions, 347

in rollover images, 177

resources, 370

versus Java, 222

Jeroen Wijering, 220-221

JPEG file format, 166, 171

JSP scripts, 433

Jump Menu behavior, 350

Jump Menu Go behavior, 350

jump menus

forms, creating in, 416-417

Go buttons, 418

JW FLV Media Player, 220-221

keyboard shortcuts

editing, 476-477

printing, 478

saving, 477

snippets, 478

L

<label> tag, 415

labels, adding to forms, 415

LAN information, setting for remote sites, 443

languages, selecting for web pages, 81

layers of editable regions (templates), 311

Layout category objects (Insert panel), 33-35

layout tables

cells, 275

color, 254

guides, 275-276

nested tables, 256

Zoom tool, 276

layouts, 9-10

.lbi files, 302

.lck files, 449

Left image alignment (Property Inspector), 165

Legacy Snippet folder (Snippets panel), 474

<legend> tag, 416

Letter-spacing setting (CSS Rule Definition dialog box), 120

Library category (Assets panel)

commands, 303

library items, creating, 299

Update Current Page
command, 307

Update Site command, 307

library items, 15

adding to web pages, 303-306

attributes, 305

compared to templates, 308

content, adding to, 303

creating, 299-301

from existing content, 301-302

from scratch, 301-303

detaching from original
items, 305

editing, 306-307

external AJAX libraries, 394-396

highlight color, selecting, 305

.lbi file extension, 302

opening, 305

recreating, 305

saving, 306

servers, sharing on, 304

updating, 306-307

uses of, 299

versus templates, 301

Lightview, 394

installing, 395-396

linking images in, 396

line numbers, displaying, 142

Line Numbers option

Coding toolbar, 143

View Options menu, 142

Link Checker, 464-465

Link color option (Page Properties dialog), 102

Link option (Property Inspector), 172

links. *See* hyperlinks

Liquid Audio file format, 215

List category (CSS Rule Definition dialog box), 118, 122

List Item button (Property Inspector), 87

List style image setting (CSS Rule Definition dialog box), 122

List style position setting (CSS Rule Definition dialog box), 122

List style type setting (CSS Rule Definition dialog box), 122

List/Menu objects, 411-413

listing website assets, 229

lists

blank values, 413

creating in forms, 411-413

item labels, 412

item values, 412

multiple values, selecting, 412

nested lists, 87

Repeat Lists, inserting, 390

Select objects, 413

sizing, 411

unordered lists, 87

versus menus, 413

widths, adjusting, 413

Live view (Document toolbar), 42

Line-height setting (CSS Rule Definition dialog box), 119

Local Info category (Site Definition Wizard), 62

local sites

link management, 463-465

Select Newer Local command (Files panel), 460

Synchronization command (Files panel), 461-462

transferring files to, 445

local websites, synchronizing files on local and remote sites, 459-463

locating sound files, 213

Location Toolbar property (Open Browser Window behavior), 360

locking guides in layout tables, 276

Loop option (Property Inspector), 210

looping

Flash files, 210

sound files, 217

M

\$mailprog variable (FormMail scripts), 428

mailto links, 107-108

Manage Sites dialog box, 52-54

managing

favorites lists, 481

files

Check In/Check Out, 447-450, 455

Select Newer Local command (Files panel), 460

Select Newer Remote command (Files panel), 460

Synchronization command (Files panel), 461-462

links, 463-465

Margin setting (CSS Rule Definition dialog box), 122

margins

changing, 267

of web pages, 78

Mark as Already Synchronized command (Synchronize command), 463

Matt's Script Archive, 427

Max Chars attribute (text fields), 406

media attribute (CSS), 279-281

Menu bar. *See also* menu bars

Commands menu, 25

Dreamweaver menu, 26

Edit menu, 23

File menu, 23

Help menu, 27

Insert menu, 24

Site menu, 26-27

Text menu, 25

View menu, 24

Menu Bar property (Open Browser Window behavior), 360

menu bars. *See also* Menu bar

creating, 326-327

customizing, 327-328

definition of, 322

editing, 329-332

menus

- commands
 - recording, 478
 - saving recorded commands, 479
- creating in forms, 411-413
- drop-down menus, 413
- Jump Menu behavior, 350
- Jump Menu Go behavior, 350
- jump menus, 416-418
- Select objects, 413
- Show Pop-up Menu behavior, 352
- versus lists, 413

merging table cells, 252-253**messages**

- Popup Message behavior, 350, 362
- popup messages, 362
- print-only messages, 293-294

<meta> tag, 139**metadata**

- adding with Adobe Bridge, 202-203
- definition of, 202
- filtering files based on metadata, 203

Metadata panel (Bridge), 202**Method property (forms), 402****Microsoft Visual SourceSafe access, setting for remote sites, 444****Middle image alignment (Property Inspector), 165****MIDI file format, 215****mirroring websites, 439****Missing Alt Text report option (Reports menu), 162****MM_swapImage() function, 347****mobile devices, CSS (Cascading Style Sheets) for**

- alternative style sheets, 282
- Device Central, 295
- external style sheets, 282-285
- Handheld style sheet, 294
- iPhone and advanced handhelds, 295-297
- media attribute, 279-281
- overview, 294
- previewing style rendering, 281-282

Modify Navigation Bar dialog box, 325**modifying. See editing****MOV files, 208****Move or Convert CSS drop-down menu (Coding toolbar), 144****Movies category (Assets panel), 232****moving**

- AP divs, 339
- CSS styles, 128-129
- website files, 64

MP3 (MPEG 3) file format, 214**multi line text fields, 406****multimedia files**

- ActiveX controls, 208
- bandwidth, 207
- browsers, 208

file formats, 214-215**Flash files, 209**

- alternative content, 211
- as sound files, 215
- assets, 232
- file extensions, 210
- looping, 210
- previewing, 211
- quality settings, 211
- resizing, 212
- support websites, 214

multimedia players, 208, 216**PDF files, linking to, 212-213****Shockwave files**

- Control Shockwave behavior, 352
- previewing, 211

sound files

- adding to web pages, 213-214
- deleting parameters, 218
- editing parameters, 218
- embedded players, 219-221
- finding, 213
- links, 219
- looping, 217
- multiple parameters, 218
- parameters list, 217
- playback controls, 216

multimedia players, 208, 216

N**named anchors, 103-104**

- as invisible elements, 104
- linking to, 105
- Point-to-File icon (Property Inspector), 106-108

naming

- AP divs, 338-339
- CSS styles, 115
- domains, 94
- editable regions (templates), 311
- files, 61
- form objects, 406
- hidden fields, 429
- image maps, 173
- templates, 309
- website files, 69
- websites, 54

navigation

- breadcrumbs, 322
- hyperlinks. *See* hyperlinks
- menu bars
 - creating, 326-327
 - customizing, 327-328
 - definition of, 322
 - editing, 329-332
- navigation bars
 - creating, 323-325
 - definition of, 322
 - editing, 325
 - Set Nav Bar Image behavior, 351

- overview, 321-323
- primary navigation, 321
- secondary navigation, 321

navigation bars

- creating, 323-325
- definition of, 322
- editing, 325
- Set Nav Bar Image behavior, 351

Navigation Toolbar property (Open Browser Window behavior), 360**nesting**

- AP divs, 337, 342-343
- lists, 87
- tables, 256

Netscape, 208**New CSS Rule dialog box, 115-116****New Document dialog box, 67-68, 187, 313****New Favorites Folder button (Assets panel), 236****New Library Item button (Assets panel), 300****New Optional Region dialog box, 311****None buttons, 413****None option (Property Inspector, Format menu), 72****notes (design)**

- author information, 466
- Contribute (Adobe), 467
- web pages, adding to, 465-466

null links, 356**numbered lists, 87****O****objects, Smart Objects, 195-197****Ogg Vorbis file format, 214****onBlur event, 353****onChange event, 353****onClick event, 354****onFocus event, 354****onLoad event, 354****onMouseDown event, 354****onMouseOver event, 354****onMouseUp event, 354, 359****onSelect event, 354****onSubmit event, 354****onUnload event, 354****Open Browser Window behavior, 350, 360-361****Open Browser Window dialog box, 360-361****Open button (Property Inspector), 305****Open Documents option (Coding toolbar), 143****opening**

- Manage Sites dialog box, 54
- new browser windows, 360-361
- panels, 45

Opera, 208**optimizing images for web pages, 168-171****optional editable regions, 311-313****order of behaviors, changing, 363****Ordered List button (Property Inspector), 87**

organizing

- asset favorites, 236
- images, 240
- websites, 63-64

orphaned files, 464-465**Outdent button (Property Inspector), 87-88****Outdent Code option (Coding toolbar), 144****Oval Hotspot tool, 175****Overflow setting (CSS Rule Definition dialog box), 123****overlapping**

- AP divs, 339-341
- hotspots, 176

P**<p> tag, 73****packets, 430****padding (cells), 248****Padding setting (CSS Rule Definition dialog box), 122****page layouts, 9-10**

- cells, adding, 275
- centering page content, 274-275
- clearing floating elements, 272-273
- color, 254
- columns, 270-272
- compound selectors, 269
- CSS box model, 259-261

CSS page layouts

- Clear property, 265
- creating, 261-262
- Float property, 265
- view options, 263-264

definition of, 259**divs**

- banner divs, 266
- inserting, 265-266

floating page elements, 269-270**guides**

- adding, 275
- creating, 275
- locking, 276
- turning on/off, 275

id selectors, 266**nested tables, 256****page margins, 267****resolution, selecting, 260****tracing images, 268-269****Zoom tool, 276****page margins, 267****Page Properties dialog box, 74, 268**

- Active link color option, 102
- Appearance (CSS) settings, 75-78
- Headings settings, 79
- hyperlink color, setting, 102
- Link color option, 102
- Rollover link color option, 102
- Title/Encoding settings, 79-81
- Visited link color option, 102

Page Source command (web browsers), 6**Page-break-after setting (CSS Rule Definition dialog box), 123****Page-break-before setting (CSS Rule Definition dialog box), 123****pages. See web pages****panel groups, expanding/collapsing, 45-46****panels, 45, 58**

- accordions, 383
- closing, 46
- collapsible panels, 383
- docking/undocking, 46
- hiding/showing, 45
- opening, 45
- resizing, 46
- Spry panel CSS, editing, 386
- tabbed panels, 381-382
- tooggling on/off, 138

Paragraph option (Property Inspector, Format menu), 72**paragraph tags, 73****Parameters dialog box, 218****parent directories, 98****parsing data, 425-427****Passive FTP, 445****password text fields, 406****pasting image maps, 173****paths**

- absolute paths, 94-96
- document-relative paths
 - definition of, 94
 - examples of, 96-98

- site root-relative paths
 - definition of, 94
 - examples of, 98
- as URL components, 95
- PDF (Portable Document Format)**
 - files, linking to, **212-213**
- Pen tool (Photoshop), 190-191**
- period (.), 114**
- Photoshop**
 - images
 - copying, 192
 - creating, 187-191
 - cropping, 183-185
 - feathering edges of, 185-186
 - resizing, 183-185
 - reverting, 187
 - rotating, 183-185
 - undoing changes to, 187
 - Smart Objects, 195-197
 - New Document dialog box, 187
 - overview, 181-182
 - Pen tool, 190-191
 - rollover images, 192-193
 - Show Guides command, 189
 - sliced images, 194
 - Text tool, 188-189
 - website, 182
- PHP scripts, 433**
- pictures. See images**
- pixelated images, 171**
- pixels versus points (fonts), 75**
- placeholder images, 310**
- placeholder text, 311**
- Placement setting (CSS Rule Definition dialog box), 123**
- Play Sound behavior, 352**
- Play Timeline behavior, 352**
- Plugin objects**
 - adding to web pages, 213
 - Check Plugin behavior, 350
 - resizing, 216
- PNG file format, 167**
- Point-to-File icon (Property Inspector), 106-108**
- Pointer Hotspot tool, 175**
- points (fonts), 75**
- Polygon Hotspot tool, 178**
- pop-up blockers, 360**
- popup menus, 352**
- Popup Message behavior, 350, 362**
- popup messages**
 - creating, 362
 - Popup Message behavior, 350, 362
- ports as URL components, 95**
- Position setting (CSS Rule Definition dialog box), 122**
- positioning AP divs, 339**
- Positioning category (CSS Rule Definition dialog box), 119, 122-123**
- POST method (processing forms), 427**
- pound sign (#), 114**
- pre-installed behaviors list, 349-351**
- precedence of CSS styles, 132**
- Preferences dialog box**
 - AP divs category, 337
 - Code Coloring category, 148
 - Code Format category, 149-150
 - Code Hints category, 150
 - Code Rewriting category, 151
 - File Types/Editors option, 167
 - Invisible Elements category, 399
- Preformatted option (Property Inspector, Format menu), 72**
- Preload Images behavior, 351**
- Preload Rollover Image check box (Insert Rollover Image dialog box, 177**
- Prevent Overlaps check box (AP Elements panel), 342**
- Preview panel (Bridge), 202**
- Preview/Debug in the Browser menu (Document toolbar), 43**
- previewing**
 - assets, 230
 - files with Adobe Bridge, 201-202
 - Flash movies, 211
 - images, 160-161
 - Shockwave movies, 211
 - style rendering, 281-282
 - web pages
 - in Device Central, 295
 - in web browsers, 89-91
- primary navigation, 321**

print, designing CSS (Cascading Style Sheets) for

- adding print-only messages, 293-294
- hiding elements, 286-289
- hiding hyperlinks, 291-293
- identifying style conflicts, 290-291
- modifying default fonts, 289-290
- overview, 286

print-only messages, creating, 293-294

printing keyboard shortcuts, 478

.prn file extension, 197

processing forms

- CGI scripts, 426-427
- FormMail script, 428-429
- GET method, 427
- parsing data, 426-427
- POST method, 427
- server-side scripts, 434-435

properties. *See specific properties*

Property Inspector

- Align menu, 164
- alignment icons, 86
- Alt menu, adding alternative text to, 162
- AP divs, positioning, 339
- Autoplay option, 210
- color information, entering, 76
- columns (tables), 252
- CSS and, 131

CSS Styles panel

- applying CSS styles, 85
- class selectors, 86
- deleting CSS styles, 85
- renaming CSS styles, 85
- viewing CSS styles, 84

Detach from Original button, 305

expanding, 47

form properties, 402

Format menu, 72

image properties, viewing, 163

Indent button, 87-88

library item attributes, viewing, 305

Link option, 172

List Item button, 87

Loop option, 210

Open button, 305

Ordered List button, 87

Outdent button, 87-88

overview, 46-47

Point-to-File icon, 106-108

Recreate button, 305

rows (tables), 252

tables, 247

Text Color text box, 84

Text Font menu, 82-83

Text Size menu, 83-84

Unordered List button, 87

Vis menu, 341-342

proxy servers, 442

Put button (Files panel), 446

Put command (Synchronize command), 463

PUT method, 449-450

Q

query files, saving searches as, 486

query strings as URL components, 96

Quick Tag Editor, 145-146

Edit Tag mode, 146

Insert HTML mode, 147

Wrap Tag mode, 147

QuickTime file format, 215

R

radio buttons, adding to forms, 408-409

RDS access, 443

Reader, 212

RealMedia file format, 214

Recent Snippets drop-down menu option (Coding toolbar), 144

@recipients variable (FormMail scripts), 428

recording commands, 478-480

Recreate button (Property Inspector), 305

references, accessing, 153-154

References panel, 153-154, 348-349

- @referers variable (FormMail scripts), 428**
- Refresh button (Files panel), 446**
- Refresh Design View button (Document toolbar), 43**
- Refresh Site List button (Assets panel), 300**
- remote servers, .lck files, 449**
- remote sites**
 - defining, 439-443
 - existing websites, importing to, 451
 - FTP access, 441-442
 - LAN information, 443
 - link management, 463-465
 - Microsoft Visual SourceSafe access, 444
 - RDS access, 443
 - Select Newer Remote command (Files panel), 460
 - settings, 445
 - Synchronization command (Files panel), 461-462
 - synchronizing files on local and remote sites, 459-463
 - transfer methods, 440
 - transferring files to, 445-449
 - WebDAV access, 443-444
- Remove All Word Specific Markup option (Clean up Word HTML dialog box), 152**
- Remove Comment option (Coding toolbar), 144**
- Remove from Favorites button (Assets panel), 236**
- removing**
 - class selectors (CSS), 117-118
 - columns (tables), 250
 - CSS styles from objects, 117-118
 - forms, 415
 - guides from images, 189
 - rows (tables), 250
 - Spry effects, 380
 - synchronized files, 462
 - underline from hyperlinks, 134
- renaming**
 - CSS styles, 85
 - recorded commands, 480
- Repeat Lists (Spry), inserting, 390**
- Replace All button (Find and Replace dialog), 485**
- Replace button (Find and Replace dialog), 485**
- reports, generating, 467-468**
- Reports dialog box, 468**
- Reports menu, 162**
- repositioning AP divs, 339**
- requests (HTTP), 426**
- required elements, designating in forms, 423**
- Resample command, 168**
- Reset buttons, 413**
- Resize Handles property (Open Browser Window behavior), 360**
- resizing**
 - AP divs, 338
 - Flash files, 212
 - images via Photoshop, 183-185
 - lists, 411
 - panels, 46
 - playback controls (sound files), 216
 - Plugin objects, 216
 - tables, 252
 - text fields, 407
- resolution**
 - of images, 187
 - of web page layouts, 260
- restoring images, 178**
- reusability, 15**
- reverting images in Photoshop, 187**
- rewriting code preferences, 151**
- Right image alignment (Property Inspector), 165**
- rollover effects, 13, 177, 192-193, 323-325**
- Rollover link color option (Page Properties dialog), 102**
- root directories, 51**
- rotating images via Photoshop, 183-185**
- Roundtrip HTML, 20**
- rows (table)**
 - adjusting height, 252
 - creating, 249-251
 - removing, 250

selecting, 245
 setting number of, 244, 247
 <tr> tag, 244

Rule Definition dialog box, 115

rules (CSS), 113

running recorded commands, 480

S

Sams Teach Yourself JavaScript in 24 Hours, Fourth Edition (Moncur), 370

Save As command (web browsers), 6

Save Page As command (web browsers), 6

saving

CSS styles in external style sheets, 130

keyboard shortcuts, 477

library items, 306

Link Checker reports, 465

recorded commands, 479

searches as query files, 486

web pages, 6, 89

website files, 69

Word documents as web pages, 152

workspace, 46

scratch-building templates, 308

scripts, 12

assets, 232-233

CGI scripts, 426-427

client-side script, 415

FormMail

\$mailprog variable, 428

processing forms, 428-429

@recipients variable, 428

@referers variable, 428

@valid_ENV variable, 429

server-side scripting

ASP, 433

ASP.NET, 433

ColdFusion, 433

dynamic web pages, 433

embedding in web pages, 434

enabling in websites, 54

JSP, 433

PHP, 433

processing forms, 434-435

Scripts category (Assets panel), 232-233

Scrollbars as Needed property (Open Browser Window behavior), 360

searches

fine-tuning, 485

query files, saving as, 486

search forms, 11

source code, 485

tags

- font tags, 485
- specific tags, 485
- text within tags, 486

text, 485

secondary navigation, 321

security of form submissions, 430

Select File dialog box, 100

Select Image Source dialog box, 160-161

Select Newer Local command (Files panel), 460

Select Newer Remote command (Files panel), 460

Select objects, 413

Select Parent Tag option (Coding toolbar), 143

Select Table command (Table Selector menu), 245

selecting forms, 402

selectors (CSS), 88

class selectors

- applying, 117
- creating, 115-117
- removing, 117-118

compound selectors, 126, 269

definition of, 113-114

favorites lists (Insert bar), adding to, 481

id selectors, 266-267

tag selectors, 124-125

Server Behaviors panel, 355

server-side scripting

ASP, 433

ASP.NET, 433

ColdFusion, 433

dynamic web pages, 433

JSP, 433

PHP, 433

processing forms, 434-435

- web pages, embedding in, 434
- websites, enabling in, 54
- servers**
 - certificates, 431
 - FTP connections, 445
 - library items, sharing, 304
 - proxy servers, 442
 - remote servers, 449
 - Server Behaviors panel, 355
 - template backups, 309
 - web pages, uploading, 15
- Set Magnification menu, 44**
- Set Nav Bar Image behavior, 351**
- Set Text of Container behavior, 351, 363-364**
- Set Text of Frame behavior, 351**
- Set Text of Status Bar behavior, 351**
- Set Text of Text Field behavior, 351**
- Shake effect (Spry), 378**
- shapes, adding to images (Photoshop), 190-191**
- sharing library items on servers, 304**
- Sharing Files section (Site Definition Wizard), 54-56**
- Sharpen tool, 168**
- Shockwave, 209, 214**
 - assets, 232
 - Control Shockwave behavior, 352
 - file extensions, 210
 - previewing, 211
- shortcuts (keyboard)**
 - editing, 476-477
 - printing, 478
 - saving, 477
 - snippets, 478
- Show Code Navigator option (Coding toolbar), 143**
- Show Events For menu (Behaviors panel), 353**
- Show Guides command (Photoshop), 189**
- Show-Hide Elements behavior, 351, 356-357**
- Show Log check box (Update Pages dialog box), 307, 314**
- Show Log on Completion option (Clean up Word HTML dialog box), 153**
- Show Pop-up Menu behavior, 352**
- showing syntax error alerts, 142**
- single line text fields, 406**
- site cache, building, 57**
- Site Definition dialog box**
 - Advanced tab
 - Check In/Check Out, 448
 - viewing remote site, 445
 - Enable Design Notes option, 465-466
- Site Definition Wizard, 52-55**
 - Editing Files section, 56
 - Local Info category, 62
 - remote sites, defining, 439-443
 - Sharing Files section, 54-56
 - Testing Files section, 53
 - Use Case-Sensitive Link Checking check box, 62
- Site menu commands, 26-27**
- site root-relative paths (hyperlinks)**
 - definition, 94
 - examples, 98
- sites. See websites**
- sizing**
 - AP divs, 338
 - Flash files, 212
 - images, 187
 - lists, 411
 - navigation bar buttons, 325
 - playback controls (sound files), 216
 - Plugin objects, 216
 - Spry menu bars, 331
 - tables, 252
 - text, 83-84
 - text fields, 407
- slash (/), 98**
- sliced images, creating, 194**
- Slide Up/Down effect (Spry), 378**
- Smart Objects, 195-197**
- snippets. See also Snippets panel**
 - custom snippets, 473-476
 - definition of, 473
 - keyboard shortcuts, 478
- Snippets panel**
 - Forms section, 413
 - Insert After text box, 476
 - Insert Before text box, 476
 - Insert Block radio button, 474-475

- Legacy Snippet folder, 474
- snippet categories list, 474
- Text Field Autoclear, 407
- Wrap Selection radio button, 474-476
- Sort Table dialog box, 250**
- sorting table data, 249-250**
- sound**
 - Play Sound behavior, 352
 - streaming, 207
- sound files**
 - adding to web pages, 213-214
 - deleting parameters, 218
 - editing parameters, 218
 - embedded players, 219-221
 - file formats, 214-215
 - finding, 213
 - links, 219
 - looping, 217
 - multiple parameters, 218
 - parameters list, 217
 - playback controls, resizing, 216
- Source Code category (Find and Replace dialog box), 485**
- Source command (web browsers), 6**
- source files, 169**
- spacer images, 256**
- spacing (cells), 248**
- spam, avoiding, 107-108**
- special effects, adding to rollover images, 192-193**
- Specific Tag category (Find and Replace dialog box), 485**
- spell checking web pages, 70**
- Split Cell dialog box, 253**
- Split Code view, 138, 141**
- Split view, 43, 142-144**
- splitting table cells, 252-253**
- spreadsheets, importing table data to, 197-198, 205, 254-255**
- Spry category objects (Insert panel), 37-38**
- Spry framework**
 - accessing, 374
 - accordions, 383
 - capabilities of, 374-376
 - collapsible panels, 383
 - data sets, creating, 389-394
 - effects
 - Appear/Fade effect, 380-381
 - overview, 378
 - removing, 380
 - Squish effect, 379-380
 - external JavaScript and CSS files, 376-378
 - menu bars
 - creating, 326-327
 - customizing, 327-328
 - editing, 329-332
 - Repeat Lists, inserting, 390
 - Spry panel CSS, editing, 386
 - tabbed panels, 381-382
 - ToolTips, 384-385
 - Validation text fields, 424-425
- SpryAssets directory, 376**
- Squish effect (Spry), 378-380**
- stacking orders (AP divs), 341**
- Stakenburg, Nick, 394**
- states of buttons, 323, 333**
- static web pages, 12**
- statistics about websites, generating, 468-471**
- Status bar, 44-45, 351**
- Status Bar property (Open Browser Window behavior), 360**
- Stop Timeline behavior, 352**
- storing website files, 55**
- streaming sound/video, 207**
- Style setting (CSS Rule Definition dialog box), 122**
- styles. See CSS (Cascading Style Sheets)**
- Submit buttons, 413-414**
- Subversion version control**
 - configuring, 452-453
 - online resources, 454
 - overview, 452
 - tools, 453-454
- Swap Image behavior, 13, 351**
- Swap Image Restore behavior, 351**
- .swf files, 210**
- Synchronize command (Files panel), 461-463**
- synchronized files, deleting, 462**
- synchronizing files, 459-463**
- Syntax Coloring option (View Options menu), 142**

Syntax Error Alerts in Info Bar option

- Coding toolbar, 143
- View Options menu, 142

System Color Picker, 76-77**T****Tab groups, 22****tabbed panels, 381-382****Tabbed Panels widget (Spry), 381-382****Table dialog box**

- Accessibility settings, 248-249
- Cell Padding setting, 248
- Cell Spacing setting, 248
- table values, setting, 244

Table Selector menu

- Select Table command, 245
- Table Widths option, turning on/off, 244
- table widths/height, clearing, 252

<table> tag, 244**Table Widths option (Table Selector menu), 244****tables**

- adding to web pages, 243-245
- cells
 - aligning contents of, 253-254
 - color in layout tables, 254
 - headers, 248
 - merging, 252-253

moving backward in, 249

padding, 248

selecting, 245

selecting groups of, 245

spacing, 248

splitting, 252-253

columns

adjusting width, 252

creating, 251

displaying width of, 244

removing, 250

selecting, 245

setting number of, 244, 247

data

adding, 249

delimited data files, 198

exporting, 254-255

importing, 197-198, 205

sorting, 249-250

HTML tags, 244-245

nested tables, 256

Property Inspector, 247

resizing, 252

rows

adjusting height, 252

creating, 249-251

removing, 250

selecting, 245

setting number of, 244, 247

selecting, 245

Table Widths option (Table Selector menu), 244

TTS browsers, 248-249

for visually impaired users, 248-249

web page layouts

adding cells, 275

color, 254

guides, 275-276

nested tables, 256

Zoom tool, 276

width/height values, 244, 252

tag menus, 150**tag selectors, 44, 124-125****tags**

attributes, 138

behaviors, 357

<blockquote>, 92

<body>, 139-141

, 73

Collapse Full Tag option (Coding toolbar), 143

deprecated tags, 82

<div>, 336

<doctype>, 69, 138

<fieldset>, 416

Fix Invalidly Nested Tags option (Clean up Word HTML box), 153

, 82

<form>, 404

<head>, 139-141

<label>, 415

<legend>, 416

<meta>, 139

- <p>, 73
- Quick Tag Editor, 145-147
- redefining via CSS styles, 124
- searches
 - font tags, 485
 - specific tags, 485
 - text within tags, 486
- Select Parent Tag option (Coding toolbar), 143
- <table>, 244
- <td>, 244
- text within tags, searching, 486
- <tr>, 244
- Wrap Tag option (Coding toolbar), 144
- Target Browsers dialog box, 91**
- <td> tag, 244**
- Template Properties dialog box, 314**
- templates**
 - backups, 309
 - behaviors, 315
 - cloaking, 309
 - compared to library items, 308
 - creating, 299
 - from existing web pages, 308-309
 - from scratch, 308-310
 - creating web pages from, 313-314
 - download websites, 308
 - editable regions
 - adjusting highlight color, 311
 - layers, 311
 - making existing regions editable, 310-311
 - making new editable regions, 311-313
 - naming, 311
 - optional regions, 311-313
 - placement of, 312
 - editing, 314
 - files, updating, 315
 - importing from web, 308
 - naming, 309
 - placeholder images, 310
 - placeholder text, 311
 - versus library items, 301
 - web page templates, 15
- Templates category (Assets panel), 299-300, 310**
- Templates directory, 308**
- Testing Files section (Site Definition Wizard), 53**
- text. *See also* CSS**
 - aligning in web pages, 86
 - alternative text
 - adding to images, 161-163
 - Missing Alt Text report option, 162
 - anti-aliasing, 191
 - color
 - selecting via Text Color text box (Property Inspector), 84
 - setting properties in web pages, 76
 - copying/pasting, 70-71
 - entering in web pages, 70
 - fonts
 - pixels versus points, 75
 - selecting via Text Font menu (Property Inspector), 82-83
 - setting properties in web pages, 75
 - formatting, 72-73, 84-85
 - hidden characters, displaying, 142
 - hyperlinks, incorporating into, 99
 - indenting, 87-88
 - nested lists, 87
 - placeholder text, 311
 - searches, 485
 - Set Text of Container behavior, 351, 363-364
 - Set Text of Frame behavior, 351
 - Set Text of Status Bar behavior, 351
 - Set Text of Text Field behavior, 351
 - size, changing, 83-84
 - spell checking, 70
 - text fields
 - adding to forms, 403-404
 - attributes, 405-407
 - multi line fields, 406
 - password fields, 406
 - single line fields, 406
 - sizing, 407
 - Text Field AutoClear snippet, 407

Validation text fields (Spry), 424-425

text within tags, searching, 486

Textarea objects, 407

unordered lists, 87

Validate Form behaviors, 351

Word Wrap option (View Options menu), 141

Text-align setting (CSS Rule Definition dialog box), 121

Text category (Find and Replace dialog box), 485

Text category objects (Insert panel), 39-41

Text Color text box (Property Inspector), 84

Text-decoration setting (CSS Rule Definition dialog box), 119

Text Field Autoclear snippet, 407

text fields

- adding to forms, 403-404
- attributes, 405-407
- multi line fields, 406
- password fields, 406
- single line fields, 406
- sizing, 407
- Text Field AutoClear snippet, 407
- Validation text fields (Spry), 424-425

Text Font menu (Property Inspector), 82-83

Text-indent setting (CSS Rule Definition dialog box), 121

Text menu, 25

Text Size menu (Property Inspector), 83-84

Text tool (Photoshop), 188-189

Text-transform setting (CSS Rule Definition dialog box), 120

Textarea objects, 407

TextTop image alignment (Property Inspector), 165

tiling images, 341

timelines, 352

Title text box (Document toolbar), 43

Title/Encoding settings (Page Properties dialog box), 79-81

titles, adding to web pages, 79-80

toolbars

- Coding, 142-144
- Document, 43

ToolTips, adding, 384-385

Top image alignment (Property Inspector), 165

<tr> tag, 244

Tracing Image dialog (Page Properties dialog box), 268

tracing images, 268-269

tracking code, 469

transfer methods (remote sites), selecting, 440

transferring files

- dependent files, 450
- to remote sites, 445-449

trigger events, 359

trustworthiness of online information, 6

TTS (text-to-speech) browsers

- alternative text for images, 161-162
- tables, accessing, 248-249

Type category (CSS Rule Definition dialog box), 118-119

U

u-Law file format, 215

underlining hyperlinks, 103

undocking panels, 46

undoing changes to images, 187

uniform resource locators (URLs), 93-96

Unordered List button (Property Inspector), 87

unordered lists, 87

Update Current Page command (Assets panel), 307, 315

Update Files dialog box, 463

Update Pages dialog box, 307, 314

Update Site command (Assets panel), 307, 315

updating

- files, 315
- library items, 306-307
- links, 463
- web pages, 314

uploading

- form files, 431-432
- web pages, 15

URL (uniform resource locator), 93-96

- Go to URL behavior, 350, 364-365
- links, changing in, 464
- home pages, 96

URL to Display property (Open Browser Window behavior), 360

URLs category (Assets panel), 231-232

Use Case-Sensitive Link

- Checking check box (Site Definition Wizard), 62

V

V Space, 165

@valid_ENV variable (FormMail scripts), 429

Validate Form behavior, 351, 421-424

Validate Markup menu (Document toolbar), 43

validating

- code, 154-155
- forms, 12
 - with Spry Validation text field, 424-425
 - with Validate Form behavior, 421-424

Validation text fields (Spry), 424-425

value identification software (color), 77

values, checked values, 409

vector-based graphics, 209

VeriSign, 431

version control, Subversion version control, 444

- configuring, 452-453
- online resources, 454
- overview, 452
- tools, 453-454

Vertical-align setting (CSS Rule Definition dialog box), 121

video. See multimedia

View menu, 24

View Options menu

- Code view, 141-142
- Document toolbar, 43

viewing

- AP divs
 - Show-Hide Elements behavior, 356-357
 - Show-Hide Elements behaviors, 351
- assets by category in Assets panel, 229
- CSS styles, 81, 84
- Document toolbar, 43
- event information, 348-349
- files with Adobe Bridge, 201-202
- hidden characters, 142
- HTML code in web browsers, 6
- HTML tag hierarchies (tables), 245
- image properties, 163
- library item attributes, 305
- panels, 45, 138

web pages in web browsers, 89-91

views

- Code view, 141-144
- Design, 138-139
- Split Code, 138, 141
- Split, 142-144
- switching between, 138

Vis menu (Property Inspector), 341-342

visibility (AP divs), changing, 336, 341-342

Visibility setting (CSS Rule Definition dialog box), 123

Visited link color option (Page Properties dialog), 102

Visual Aids menu (Document toolbar), 43, 104-105

Visual SourceSafe access, setting for remote sites, 444

W

.WAV file format, 208, 215

web browsers

- Check Browser behavior, 352
- CSS requirements, 111
- events
 - definition of, 348
 - displaying information on, 348-349
 - onBlur, 353

- onChange, 353
- onClick, 354
- onFocus, 354
- onLoad, 354
- onMouseDown, 354
- onMouseOver, 354
- onMouseUp, 354
- onSelect, 354
- onSubmit, 354
- overview, 352-353
- support for, 353

web browsers. See browsers

web hosting, 15

web pages. See also websites

- elements of, 7-9
- exporting from page layout software, 9
- interactivity, 13-14
- previewing, 89-91
- saving, 6, 89
- saving Word documents as, 152
- static web pages, 12
- updating, 314
- uploading, 15

Web Photo Album, 178

web servers, 15

WebDAV access, setting for remote sites, 443-444

websafe colors, 230

website navigation, 321

websites. See also web pages

- assets
 - color assets, 231
 - copying to websites, 239
 - creating, 237-239
 - editing, 239
 - images assets, 230-231
 - link assets, 231-232
 - listing, 229
 - movie assets, 232
 - previewing, 230
 - script assets, 232-233
 - viewing by category in Assets panel, 229

Café Press, 12

defining, 51-58

development sites, 55

Dreamweaver Exchange, 134

importing, 64

local sites

- link management, 463-465

- Select Newer Local command, 460

- Synchronization command, 461-462

- transferring files to, 445

mirroring, 439

moving files within, 64

naming, 54

organizing, 63-64

remote sites

- defining, 439-443

- FTP access, 441-442

- importing existing websites to, 451

- LAN information, 443

- link management, 463-465

- Microsoft Visual SourceSafe access, 444

- RDS access, 443

- Select Newer Remote command (Files panel), 460

- selecting transfer methods, 440

- Synchronization command (Files panel), 461-462

- transferring files to, 445-449

- viewing settings via Advanced Tab, 445

- WebDAV access, 443-444

root directories, 51

site cache, 57

statistics, generating, 468-471

trustworthiness of, 6

Welcome screen, 21-22

what you see is what you get (WYSIWYG), 20

White-space setting (CSS Rule Definition dialog box), 121

widgets (Spry)

- Accordion widget, 383

- Collapsible Panels widget, 383

Tabbed Panels widget, 381-382

ToolTip widget, 384-385

Width setting (CSS Rule Definition dialog box), 121-123

Wikipedia, 6

Window Height property (Open Browser Window behavior), 360

Window Name property (Open Browser Window behavior), 360

Window Size drop-down menu, 44-45

Window Width property (Open Browser Window behavior), 360

windows, 43

wizards, **Site Definition Wizard**, 52

- defining remote sites, 439-443
- Editing Files section, 53-56
- Local Info category, 62
- Sharing Files section, 54-56
- Testing Files section, 53
- Use Case-Sensitive Link Checking check box, 62

Word documents, 152

Word Wrap option (View Options menu), 141

Word-spacing setting (CSS Rule Definition dialog box), 120

workspaces, saving, 46

Wrap Selection radio button (Snippets panel), 474-476

Wrap Tag mode (Quick Tag Editor), 147

Wrap Tag option (Coding toolbar), 144

WYSIWYG (what you see is what you get), 20

X

XHTML (Extensible Hypertext Markup Language), 6, 69

- cleaning up HTML created with Word, 151-153
- code preferences
 - code hints, 150
 - code rewriting, 151
 - color, 148
 - formatting, 149-150
- document type declaration, 138
- overview, 137
- syntax, 137-138
- tags, 138
- validating code, 154-155

XML (Extensible Markup Language), 373

- attributes, 388
- displaying with Spry data source, 389-390
- elements, 388
- files, creating, 388
- overview, 387
- reusing with Spry data set, 390-394

Y-Z

YouTube, 12

z-index values, 123, 336, 341

Zoom tool, 44, 276