

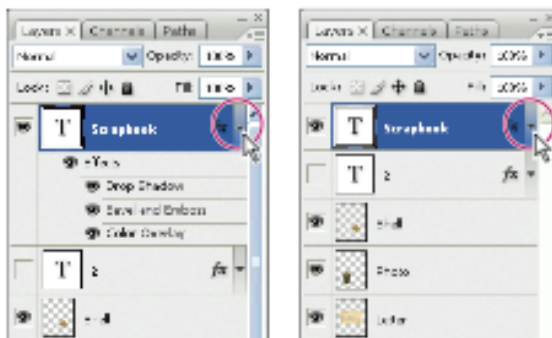
8 In the Layers palette, notice the list of effects nested in the Scrapbook type layer.



You should see four rows of information. The top row identifies them as Effects. The other three rows are the three styles that you applied to the layer: Drop Shadow, Bevel and Emboss, and Color Overlay. A visibility eye icon (👁) also appears next to each effect. You can turn off any effect by clicking its eye icon to make it disappear. Clicking this visibility box again restores both the icon and the effect. You can hide all three layer styles by clicking the eye icon for Effects.

9 Before you continue, make sure that eye icons appear for all four items nested under the Scrapbook layer.

10 To hide the layer styles listings, click the Reveal Layer Effects arrow to collapse the effects list.



Lesson 5, page 162

The top and bottom graphics on the page are the same for steps 8 & 10. The first one for step 8 should show only the dialog box with the effects, and no highlights.

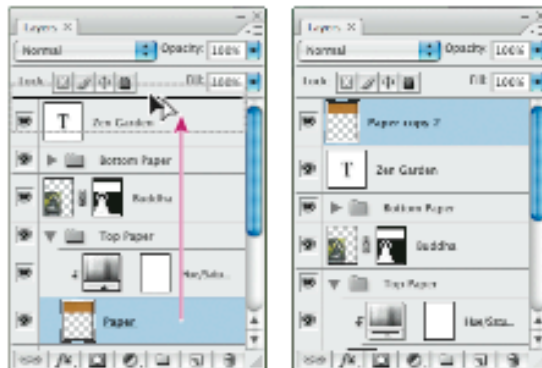
- 2 Click with the Type tool in the center of the top paper background, and type **Zen Garden**.



To add the paper texture, first you will copy it.

- 3 In the Layers palette, click the arrow next to the Top Paper layer group to expand its contents.
- 4 Press the Alt (Windows) or Option (Mac OS) key, and drag the Paper layer to just above the Zen Garden type layer. This makes a copy of the Paper layer on top of the type layer.

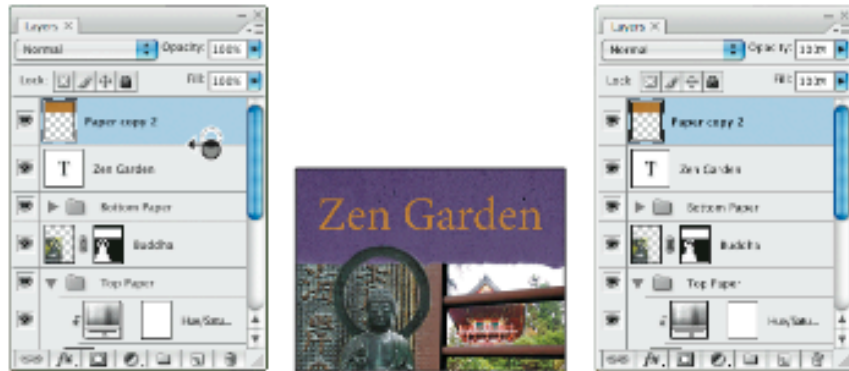
You must move the layer out of its layer group to be able to create a clipping group in the next step. You can clip two layers together, but you cannot clip together a layer group and a layer.



Lesson 6, page 205

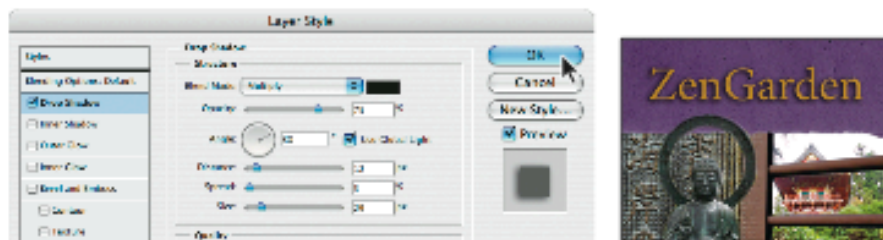
For step 4, the bottom two graphics should be the same size.

5 To clip the Paper Copy layer to the Zen Garden type layer, position the pointer between the two layers, and hold down Alt (Windows) or Option (Mac OS) to display the double-circle clipping layer icon (⌘); Click when this icon appears.



The original gold paper texture shows through the type. Now you'll make the type pop a bit more with a drop shadow.

6 To add a drop shadow, select the Zen Garden type layer. Click the Add Layer Style button (fx) at the bottom of the Layers palette, and choose Drop Shadow from the pop-up menu. In the Layer Style dialog box under the Drop Shadow options, select the Multiply blending mode; set the Distance to 12, Spread to 5, Size to 29. Click OK.



Note: If you make a mistake and inadvertently add the Drop Shadow effect to the Paper Copy layer, simply drag the effect to the Zen Garden type layer to apply it there.

To complete the composition and this lesson, you'll add your name as the author to the bottom paper texture.

7 In the Layers palette, make sure that the top layer is selected, so that the new type

Lesson 6, page 206

For step 6, bottom graphic should show layer styles dialog on left and sample art on right.

Page 231, The last sentence is missing a line of text. It should read:

Even better: use an external hard drive set to back up automatically. "The question is not if your [internal] hard drive is going to crash," says Graham, reciting a common adage, "it's when."

Page 321 (Lesson 10) Note for after Step 4: *If you don't have an F13 key on your keyboard, feel free to substitute another key for this keyboard shortcut.*