

ENGINEERING DESIGN GRAPHICS WITH **Autodesk[®]** **Inventor[®] 2020**



JAMES D. BETHUNE

FREE SAMPLE CHAPTER

SHARE WITH OTHERS



***Engineering Design
Graphics with
Autodesk® Inventor®
2020***

This page intentionally left blank

***Engineering Design
Graphics with
Autodesk® Inventor®
2020***

James D. Bethune

Engineering Design Graphics with Autodesk® Inventor® 2020

Copyright © 2020 by Pearson Education, Inc. All rights reserved. This publication is protected by Copyright and permission should be obtained from the publisher prior to any prohibited reproduction, storage in a retrieval system, or transmission in any form or by any means, electronic, mechanical, photocopying, recording, or likewise. For information regarding permissions, request forms and the appropriate contacts within the Pearson Education Global Rights & Permissions Department, please visit www.pearsoned.com/permissions/.

Many of the designations by manufacturers and sellers to distinguish their products are claimed as trademarks. Where those designations appear in this book, and the publisher was aware of a trademark claim, the designations have been printed in initial caps or all caps.

Credits and acknowledgments borrowed from other sources and reproduced, with permission, in this textbook appear on the appropriate page within the text. Unless otherwise stated, all artwork has been provided by the author.

Autodesk screen shots reprinted courtesy of Autodesk, Inc. © 2019. All rights reserved. Autodesk, AutoCAD, Autodesk Inventor, and Inventor are registered trademarks or trademarks of Autodesk, Inc., in the U.S.A. and certain other countries.

Notice of Liability:

The publication is designed to provide tutorial information about Inventor® and/or other Autodesk computer programs. Every effort has been made to make this publication complete and as accurate as possible. The reader is expressly cautioned to use any and all precautions necessary, and to take appropriate steps to avoid hazards, when engaging in the activities described herein.

Neither the author nor the publisher makes any representations or warranties of any kind, with respect to the materials set forth in this publication, express or implied, including without limitation any warranties of fitness for a particular purpose or merchantability. Nor shall the author or the publisher be liable for any special, consequential, or exemplary damages resulting, in whole or in part, directly or indirectly, from the reader's use of, or reliance upon, this material or subsequent revisions of this material.

Acquisitions Editor: Chhavi Vig
Managing Editor: Sandra Schroeder
Senior Production Editor: Lori Lyons
Cover Designer: Chuti Prasertsith

Full-Service Project Management:
Gayathri Umashankaran/codeMantra
Composition: codeMantra
Proofreader: Abigail Manheim

Library of Congress Control Number is on file

ISBN 10: 0-13-556309-0
ISBN 13: 978-0-13-556309-7

ScoutAutomatedPrintCode



This book introduces Autodesk® Inventor® 2020 and shows how to use Autodesk Inventor to create and document drawings and designs. The book puts heavy emphasis on engineering drawings and on drawing components used in engineering drawings such as springs, bearings, cams, and gears. It shows how to create drawings using many different formats such as .ipt, .iam, ipn, and .idw for both English and metric units. It explains how to create drawings using the tools located under the **Design** tab and how to extract parts from the **Content Center**.

All topics are presented using a step-by-step format so that the reader can work directly from the text to the screen. There are many easy-to-understand labeled illustrations. The book contains many sample problems that demonstrate the subjects being discussed. Each chapter contains a variety of projects that serve to reinforce the material just presented and allow the reader to practice the techniques described.

Chapters 1 and 2 present 2D sketching tools and the **Extrude** tool. These chapters serve as an introduction to the program. There are 38 Chapter Projects to help students apply the material presented.

Chapter 3 demonstrates the tools needed to create 3D models, including **Shell, Hole, Rib, Split, Loft, Sweep,** and **Coil**. Work points, work axes, and work planes are explained and demonstrated.

Chapter 4 shows how to create orthographic views from 3D models. The creation of isometric views, section views, and auxiliary views is covered. In addition, a comparison between first- and third-angle projection is presented using both ANSI and ISO conventions.

Chapter 5 shows how to create assembly drawings using both the bottom-up and the top-down processes. The chapter includes presentation drawings and exploded isometric drawings with title blocks, parts lists, revision blocks, and tolerance blocks. There is an extensive step-by-step example that shows how to create an animated assembly—that is, a drawing that moves on the screen.

Chapter 6 covers threads and fasteners. Drawing conventions and callouts are defined for both inch and metric threads. The chapter shows how to calculate thread lengths and how to choose the appropriate fastener from Inventor's **Content Center**. The **Content Center** also includes an extensive listing of nuts, setscrews, washers, and rivets.

Chapter 7 shows how to apply dimensions to drawings. Both ANSI and ISO standards are demonstrated, but the emphasis is on ANSI standards. Different styles of dimensioning, including ordinate and baseline, and using Inventor's **Hole Table** are presented. Applying dimensions to a drawing is considered an important skill, so many examples and sample problems are included.

Chapter 8 is an extensive discussion of tolerancing, including geometric tolerances. The chapter first shows how to use Inventor to apply tolerances to a drawing. The chapter then shows how to calculate tolerances in various design situations. Positional tolerances for both linear and geometric applications are included. The chapter introduces the **Limits/Fits Calculator** located on the **Power Transmission** panel under the **Design** tab.

Chapter 9 shows how to draw springs using the **Standard.ipt** format and the **Coil** tool. It also shows how to draw springs using the tools on the

Spring panel under the **Design** tab. Compression, extension, torsion, and Belleville springs are included.

Chapter 10 shows how to draw shafts using the **Shaft** tool under the Design tab. Chamfers, retaining rings, retaining ring grooves, keys and keyways, splines, pins, O-rings, and O-ring grooves are covered. The chapter contains many exercise problems.

Chapter 11 shows how to match bearings to specific shafts using the **Content Center**. Plain, ball, and thrust bearings are presented. An explanation of tolerances between a shaft and bearing bore and between the bearing's outside diameter and the assembly housing is given. Both ANSI and ISO standards are presented.

Chapter 12 emphasizes how to draw gears and how to mount them into assembly drawings. Spur, bevel, and worm gears are introduced. The chapter shows how to create gear hubs with setscrews, and keyways with keys, and how to draw assembly drawings that include gears. There are two new extensive assembly exercise problems.

Chapter 13 shows how to draw basic sheet metal parts, including features such as tabs, reliefs, flanges, cuts, holes, and hole patterns.

Chapter 14 shows how to create and draw weldments. Only fillet and groove welds are covered.

Chapter 15 shows how to design and draw cams. Displacement diagrams and different types of followers are discussed.

Chapter 16 is available online and includes two large project-type problems. They can be used as team projects to help students learn to work together to share and compile files, or they can be used as end-of-the-semester individual projects. This chapter can be found on the web as a supplement to the Instructor's Manual at <http://pearsonhighered.com/irc>. Instructors may distribute to students.

Acknowledgments

I would like to thank the following reviewers for their invaluable input: Rebecca Rosenbauer, Lafayette College; Antigone Sharris, Triton College; Nancy E. Study, Virginia State University; and Marsha Walton, Finger Lakes Community College.

Thanks to my family: David, Maria, Randy, Sandra, Hannah, Wil, Madison, Jack, Luke, Sam, and Ben.

A special thanks to Cheryl.

James D. Bethune

Style Conventions in *Engineering Design Graphics with Autodesk® Inventor® 2020*

Text Element	Example
<p>Key terms—Bold and italic on first mention in the body of the text. Brief glossary definition in margin following first mention.</p>	<p>Create a <i>work axis</i> by clicking on the edge of the block.</p>
<p>Inventor tools—Bold and follow Inventor capitalization convention.</p>	<p>Click on the Line tool.</p>
<p>Toolbar names, menu items, and dialog box names—Bold and follow capitalization convention in Inventor tab, panel, or pull-down menu (generally first letter capitalized).</p>	<p>The Design tab The Modify panel The 2D Chamfer dialog box The File pull-down menu</p>
<p>Dialog box controls/buttons/input items—Bold and follow capitalization convention of the name of the item or the name shown in the Inventor tooltip.</p>	<p>Choose the Metric tab in the New File dialog box. Click on the Flush button on the Place Constraint dialog box. On the Assembly tab, set the Offset to 0.000 mm. ONG 300/320 sat 76</p>

This page intentionally left blank

Brief Contents

CHAPTER 1	Get Started	1
CHAPTER 2	Two-Dimensional Sketching	27
CHAPTER 3	3D Models	85
CHAPTER 4	Orthographic Views	167
CHAPTER 5	Assembly Drawings	221
CHAPTER 6	Threads and Fasteners	311
CHAPTER 7	Dimensioning a Drawing	389
CHAPTER 8	Tolerancing	455
CHAPTER 9	Springs	563
CHAPTER 10	Shafts	605
CHAPTER 11	Bearings	671
CHAPTER 12	Gears	697
CHAPTER 13	Sheet Metal Drawings	747
CHAPTER 14	Weldment Drawings	779
CHAPTER 15	Cams	799
	Index	823

This page intentionally left blank

Contents

CHAPTER 1 Get Started	1	Taper	87
Chapter Objectives	1	ViewCube	90
Introduction	1	Revolve	94
Creating a First Sketch	4	Holes	96
The Undo Tool	9	Fillet	99
Creating a Solid Model	9	Full Round Fillet	100
Sample Problem SP1-1	12	Face Fillet	101
Sample Problem SP1-2 Angular Shapes	19	Creating a Variable Fillet	103
Chapter Summary	22	Chamfer	104
Chapter Test Questions	22	Face Draft	105
Chapter Project	24	Shell	107
CHAPTER 2 Two-Dimensional Sketching	27	Split	109
Chapter Objectives	27	Mirror	111
Introduction	27	Rectangular Pattern	112
The Sketch Panel	27	Circular Pattern	113
Circle	33	Sketch Planes	114
Arc	36	Editing a 3D Model	120
Spline	39	Default Planes and Axes	123
Ellipse	40	Work Planes	125
Point	43	Sample Problem SP3-1	127
Rectangle	43	Angled Work Planes	129
Fillet	44	Offset Work Planes	132
Chamfer	46	Work Points	135
Polygon	48	Ribs (WEBs)	139
Text	49	Loft	141
Geometry Text	51	Sweep	144
Dimension	52	Coil	146
Constraints	52	Model Material	148
Pattern—Rectangular	55	Chapter Summary	150
Pattern—Circular	57	Chapter Test Questions	150
Pattern—Mirror	59	Chapter Project	153
Move	60	CHAPTER 4 Orthographic Views	167
Copy	62	Chapter Objectives	167
Rotate	64	Introduction	167
Trim	65	Fundamentals of Orthographic Views	168
Extend	66	Orthographic Views with Inventor	173
Offset	67	Isometric Views	180
Editing a Sketch	68	Section Views	181
Sample Problem SP2-1	70	Offset Section Views	184
Chapter Summary	75	Aligned Section Views	185
Chapter Test Questions	75	Detail Views	185
Chapter Project	77	Break Views	186
CHAPTER 3 3D Models	85	Auxiliary Views	187
Chapter Objectives	85	ASME Y14.3-2003	190
Introduction	85	Chapter Summary	194
Extrude	85	Chapter Test Questions	194
		Chapter Project	198

CHAPTER 5 Assembly Drawings	221	CHAPTER 7 Dimensioning a Drawing	389
Chapter Objectives	221	Chapter Objectives	389
Introduction	221	Introduction	389
Bottom-Up and Top-Down Assemblies	221	Terminology and Conventions—ANSI	390
Starting an Assembly Drawing	222	Creating Drawing Dimensions	392
Degrees of Freedom	224	Drawing Scale	399
Free Move and Free Rotate Tools	226	Units	400
Constrain	227	Aligned Dimensions	403
Presentation Drawings	235	Radius and Diameter Dimensions	404
Animation	238	Dimensioning Holes	406
Isometric Drawings	238	Sample Problem SP7-1	407
Assembly Numbers	241	Dimensioning Counterbored, Countersunk Holes	411
Parts List	243	Angular Dimensions	413
Title Block	246	Ordinate Dimensions	415
Subassemblies	249	Baseline Dimensions	418
Drawing Sheets	253	Hole Tables	419
Other Types of Drawing Blocks	255	Locating Dimensions	421
Top-Down Assemblies	260	Fillets and Rounds	422
Editing a Part within an Assembly Drawing	280	Rounded Shapes—Internal	422
Patterning Components	284	Rounded Shapes—External	423
Mirroring Components	285	Irregular Surfaces	423
Copying Components	286	Polar Dimensions	424
Chapter Summary	288	Chamfers	425
Chapter Test Questions	288	Knurling	426
Chapter Project	291	Keys and Keyseats	426
CHAPTER 6 Threads and Fasteners	311	Symbols and Abbreviations	427
Chapter Objectives	311	Symmetrical and Centerline Symbols	427
Introduction	311	Dimensioning to a Point	428
Thread Terminology	312	Dimensioning Section Views	429
Thread Callouts—Metric Units	312	Dimensioning Orthographic Views	429
Thread Callouts—ANSI Unified Screw Threads	313	3D Dimensions	430
Thread Representations	314	Sample Problem SP7-2	431
Internal Threads	315	Sample Problem SP7-3	433
Threaded Blind Holes	317	Chapter Summary	436
Creating Threaded Holes Using the Hole Tool	319	Chapter Test Questions	436
Standard Fasteners	322	Chapter Projects	439
Sizing a Threaded Hole to Accept a Screw	324	CHAPTER 8 Tolerancing	455
Screws and Nuts	328	Chapter Objectives	455
Types of Threaded Fasteners	332	Introduction	455
Flat Head Screws—Countersunk Holes	333	Direct Tolerance Methods	455
Counterbores	336	Tolerance Expressions	457
Drawing Fasteners Not Included in the Content Center	340	Understanding Plus and Minus Tolerances	457
Sample Problem SP6-1	342	Creating Plus and Minus Tolerances	458
Washers	345	Limit Tolerances	462
Setscrews	348	Angular Tolerances	463
Rivets	351	Standard Tolerances	465
Sample Problem SP6-2	352	Double Dimensioning	466
Chapter Summary	364	Chain Dimensions and Baseline Dimensions	467
Chapter Test Questions	364	Tolerance Studies	469
Chapter Project	367		

Rectangular Dimensions	470	CHAPTER 10 Shafts	605
Hole Locations	470	Chapter Objectives	605
Choosing a Shaft for a Toleranced Hole	471	Introduction	605
Sample Problem SP8-1	473	Uniform Shafts and Chamfers	606
Sample Problem SP8-2	473	Shafts and Retaining Rings	611
Nominal Sizes	474	Shafts and Keys	616
Standard Fits (Metric Values)	474	Square Keys	617
Hole and Shaft Basis	476	Pratt and Whitney Keys	622
Visual Presentations of the Hole and Shaft Tolerances	478	Woodruff Keys	629
Standard Fits (Inch Values)	479	Shafts with Splines	632
Preferred and Standard Sizes	479	Collars	638
Surface Finishes	480	O-Rings	643
Surface Control Symbols	482	Drawing Shafts and Pins Using the Tools Under the Design Tab	648
Geometric Tolerances	491	Chapter Summary	652
Tolerances of Form	491	Chapter Test Questions	652
Straightness	492	Chapter Project	655
Straightness (RFS and MMC)	492	CHAPTER 11 Bearings	671
Circularity	495	Chapter Objectives	671
Cylindricity	495	Introduction	671
Geometric Tolerances Using Inventor	496	Plain Bearings	672
Tolerances of Orientation	504	Ball Bearings	677
Datums	504	Thrust Bearings	681
Perpendicularity	505	Chapter Summary	686
Parallelism	508	Chapter Test Questions	686
Angularity	509	Chapter Project	688
Profiles	509	CHAPTER 12 Gears	697
Runouts	510	Chapter Objectives	697
Positional Tolerances	512	Introduction	697
Virtual Condition	514	Gear Terminology	697
Floating Fasteners	514	Gear Formulas	699
Sample Problem SP8-3	515	Drawing Gears Using the Gear Tool	699
Sample Problem SP8-4	516	Gear Hubs	701
Fixed Fasteners	517	Gear Ratios	706
Sample Problem SP8-5	518	Gear Trains	707
Design Problems	519	Gears with Keyways	709
Chapter Summary	522	Gear Assemblies	712
Chapter Test Questions	522	Supports for Bevel Gears	724
Chapter Project	525	Worm Gears	726
CHAPTER 9 Springs	563	Supports for Worm Gears	728
Chapter Objectives	563	Chapter Summary	730
Introduction	563	Chapter Test Questions	730
Compression Springs	563	Chapter Projects	732
Extension Springs	570	CHAPTER 13 Sheet Metal Drawings	747
Torsion Springs	577	Chapter Objectives	747
Belleville Springs	580	Introduction	747
Springs in Assembly Drawings	582	Sheet Metal Drawings	747
Chapter Summary	588	Flat Patterns	761
Chapter Test Questions	588		
Chapter Project	590		

Punch Tool	762	Displacement Diagrams	800
Chapter Summary	769	Drawing a Cam Using Inventor	801
Chapter Test Questions	769	Sample Problem SP15-1	806
Chapter Projects	770	Cams and Followers	809
CHAPTER 14 Weldment Drawings	779	Chapter Summary	815
Chapter Objectives	779	Chapter Test Questions	815
Introduction	779	Chapter Projects	816
Fillet Welds	779	Index	823
Weldments—Groove Welds	791		
Sample Problem SP14-1	792		
Chapter Summary	794		
Chapter Test Questions	794		
Chapter Project	795		
CHAPTER 15 Cams	799		
Chapter Objectives	799		
Introduction	799		

4

chapterfour

Orthographic Views

CHAPTER OBJECTIVES

- Learn how to draw orthographic views
- Learn ANSI standards and conventions
- Learn about third-angle projection
- Learn how to draw section and auxiliary views

orthographic views: Two-dimensional views used to define a three-dimensional model. (Usually more than one view is needed to define a 3D model.)

Introduction

Orthographic views may be created directly from 3D Inventor models.

Orthographic views are two-dimensional views used to define a three-dimensional model. Unless the model is of uniform thickness, more than one orthographic view is necessary to define the model's shape. Standard practice calls for three orthographic views: a front, a top, and a right-side view, although more or fewer views may be used as needed.

Modern machines can work directly from the information generated when a solid 3D model is created, so the need for orthographic views—blueprints—is not as critical as it once was; however, there are still many drawings in existence that are used for production and reference. The ability to create and read orthographic views remains an important engineering skill.

This chapter presents orthographic views using third-angle projection in accordance with American National Standards Institute (ANSI) standards. International Organization for Standardization (ISO) first-angle projections are also presented.

Fundamentals of Orthographic Views

Figure 4-1 shows an object with its front, top, and right-side orthographic views projected from the object. The views are two-dimensional, so they show no depth. Note that in the projected right plane, there are three rectangles. There is no way to determine which of the three is closest and which is farthest away if only the right-side view is considered. All views must be studied to analyze the shape of the object.

Figure 4-2 shows three orthographic views of a book. After the views are projected they are positioned as shown. The positioning of views relative to one another is critical. The views must be aligned and positioned as shown.

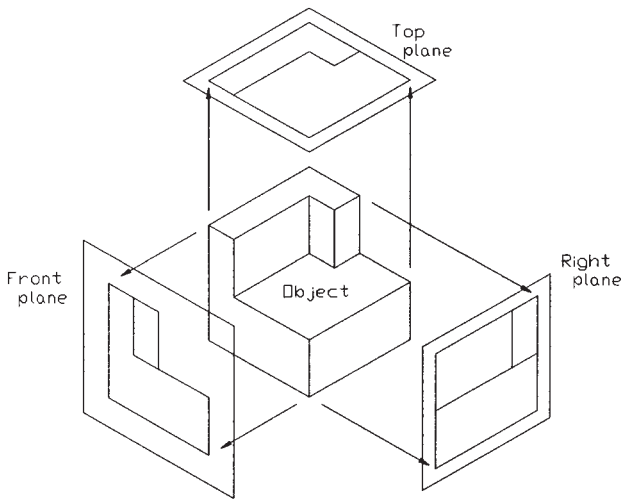


Figure 4-1

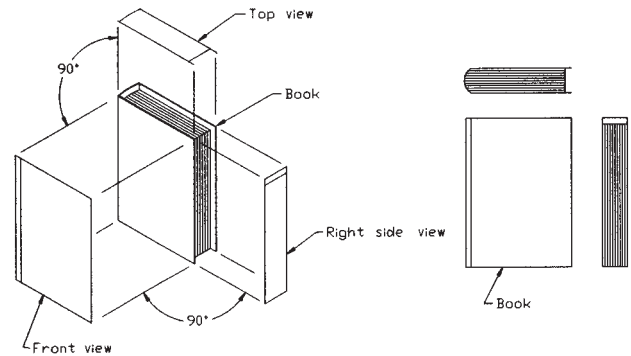


Figure 4-2

Normal Surfaces

normal surfaces: Surfaces that are 90° to each other.

Normal surfaces are surfaces that are at 90° to each other. Figures 4-3, 4-4, and 4-5 show objects that include only normal surfaces and their orthographic views.

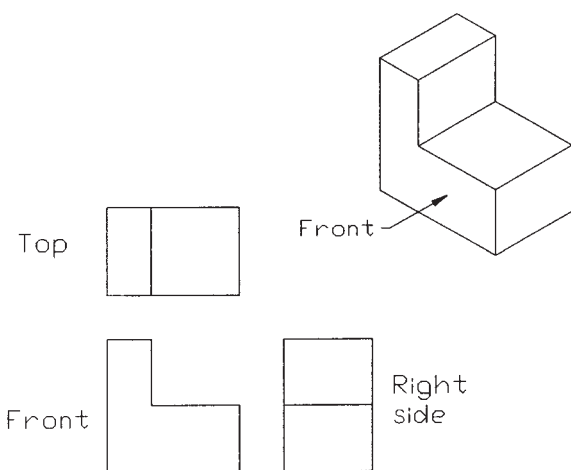


Figure 4-3

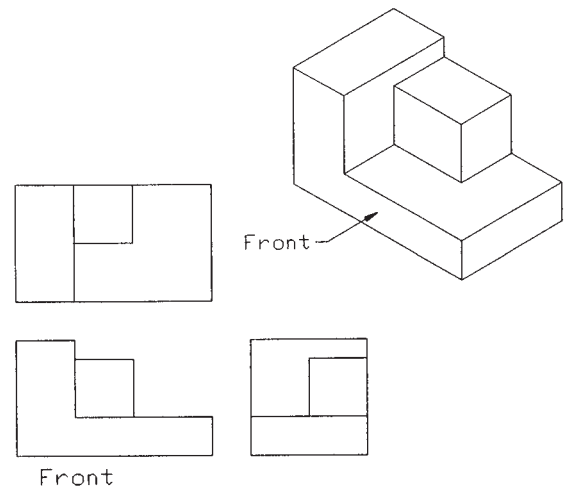
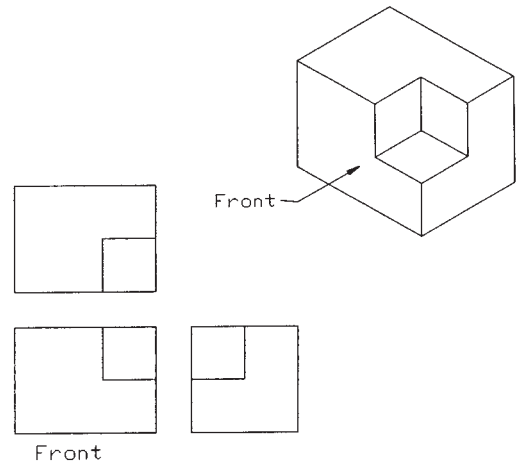


Figure 4-4

Figure 4-5



Hidden Lines

Hidden lines are used to show surfaces that are not directly visible. All surfaces must be shown in all views. If an edge or surface is blocked from view by another feature, it is drawn using a hidden line. Figures 4-6 and 4-7 show objects that require hidden lines in their orthographic views.

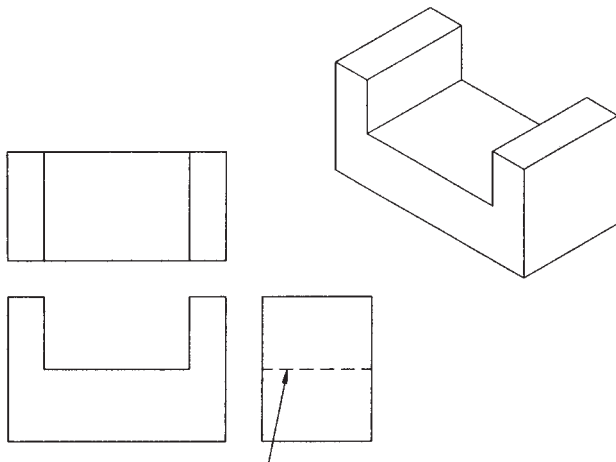


Figure 4-6

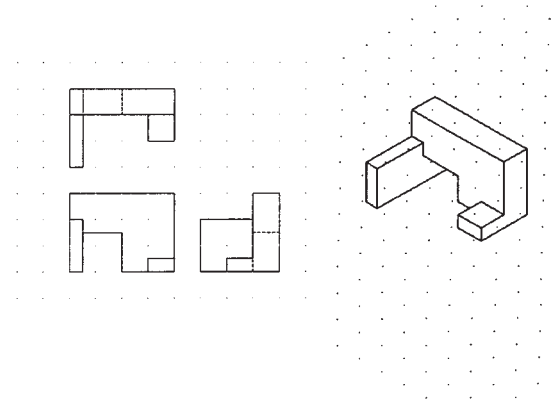
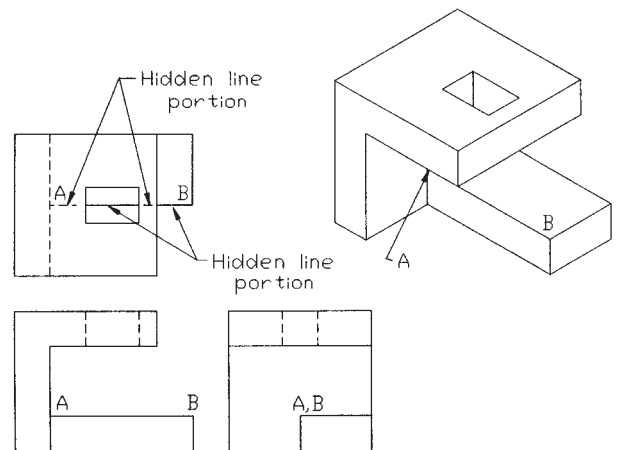


Figure 4-7

Figure 4-8 shows an object that contains an edge line, A-B. In the top view, line A-B is partially hidden and partially visible. The hidden portion of the line is drawn using a hidden-line pattern, and the visible portion of the line is drawn using a solid line.

Figure 4-8



Figures 4-9 and 4-10 show objects that require hidden lines in their orthographic views.

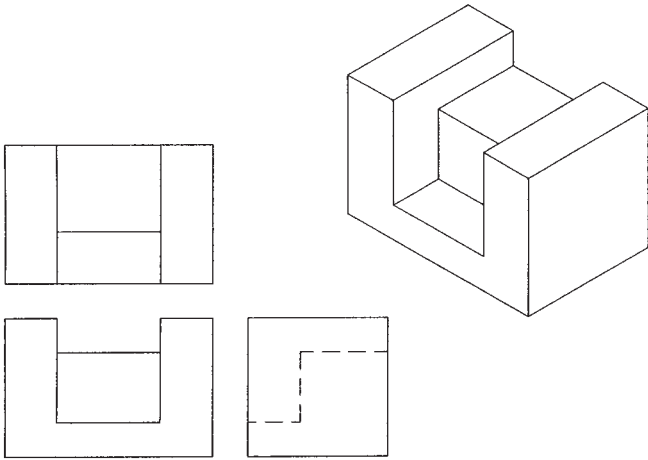


Figure 4-9

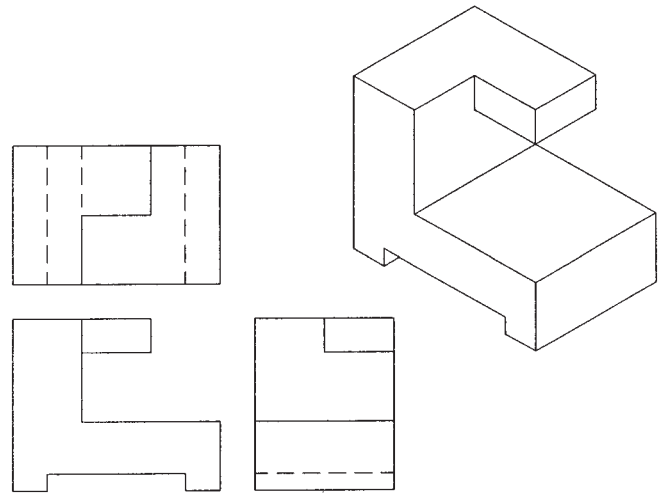


Figure 4-10

Precedence of Lines

It is not unusual for one type of line to be drawn over another type of line. Figure 4-11 shows two examples of overlap by different types of lines. Lines are shown on the views in a prescribed order of precedence. A solid

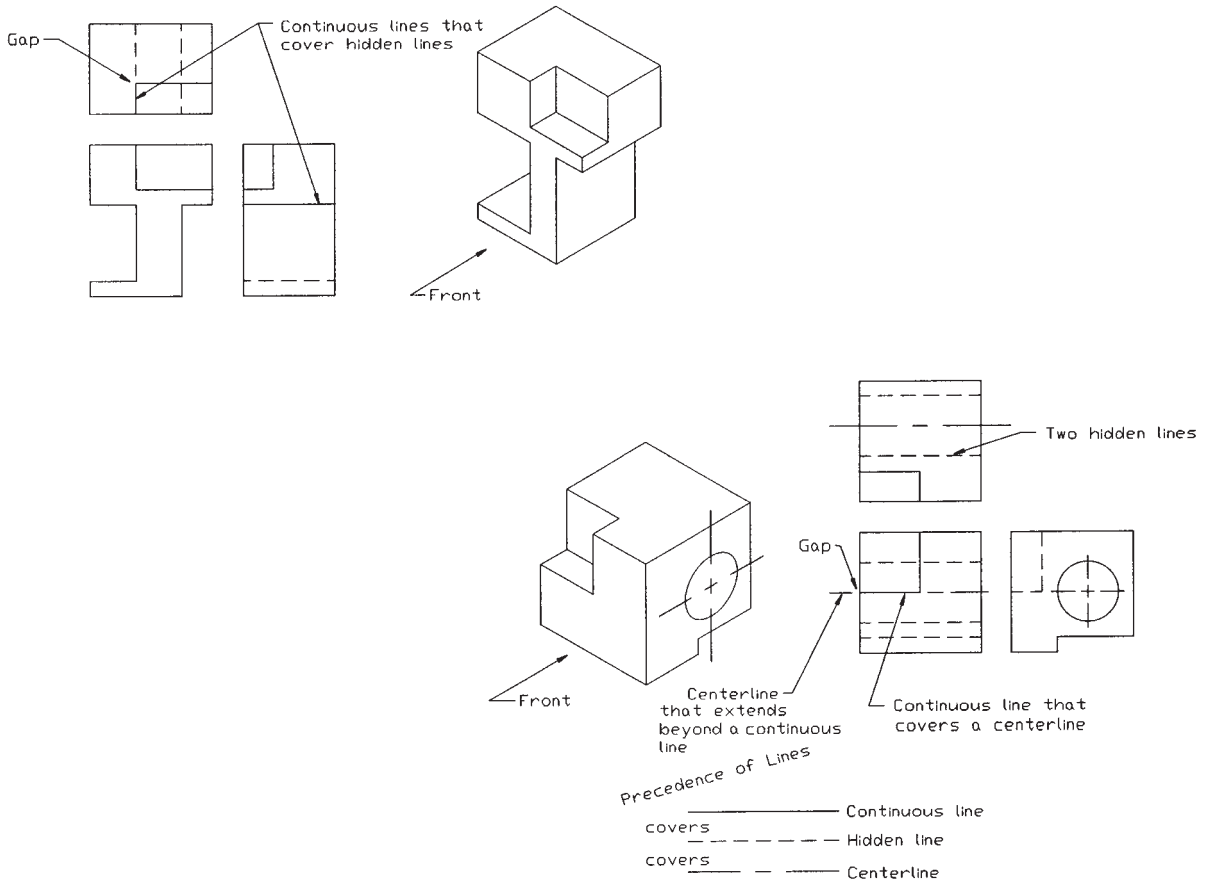


Figure 4-11

line (object or continuous) takes precedence over a hidden line, and a hidden line takes precedence over a centerline.

Slanted Surfaces

slanted surfaces: Surfaces that are at an angle to each other.

Slanted surfaces are surfaces drawn at an angle to each other. Figure 4-12 shows an object that contains two slanted surfaces. Surface *ABCD* appears as a rectangle in both the top and front views. Neither rectangle represents the true shape of the surface. Each is smaller than the actual surface. Also, none of the views shows enough of the object to enable the viewer to accurately define the shape of the object. The views must be used together for a correct understanding of the object's shape.

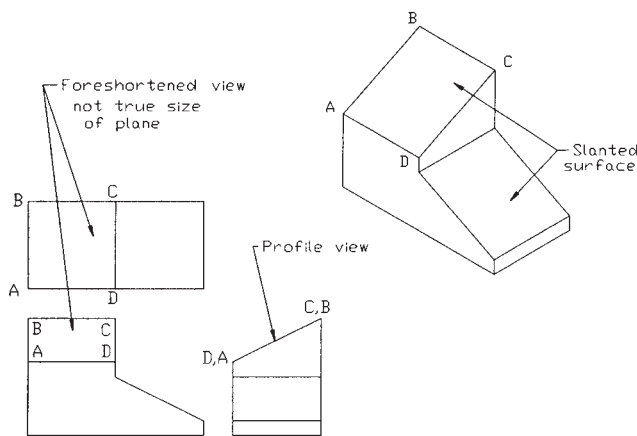


Figure 4-12

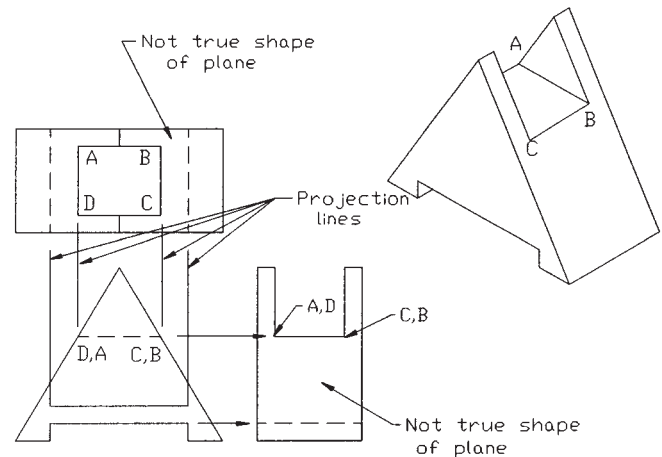
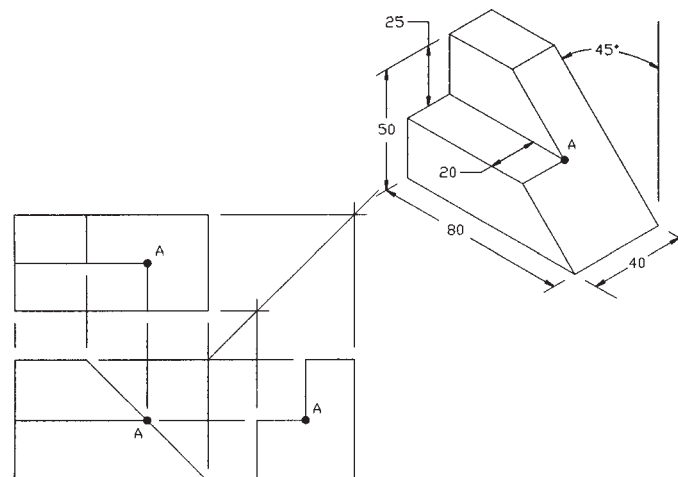


Figure 4-13

Figures 4-13 and 4-14 show objects that include slanted surfaces. Projection lines have been included to emphasize the importance of correct view location. Information is projected between the front and top views using vertical lines and between the front and side views using horizontal lines.

Figure 4-14

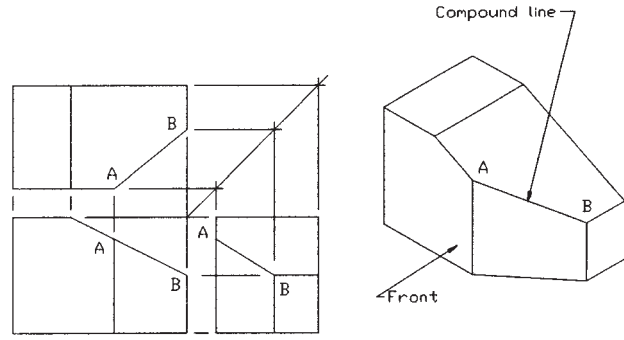


Compound Lines

compound line: A line that is neither perpendicular nor parallel to the *X*, *Y*, or *Z* axis.

A **compound line** is formed when two slanted surfaces intersect. Figure 4-15 shows an object that includes a compound line.

Figure 4-15



Oblique Surfaces

oblique surface: A surface that is slanted in two different directions.

An **oblique surface** is a surface that is slanted in two different directions. Figures 4-16 and 4-17 show objects that include oblique surfaces.

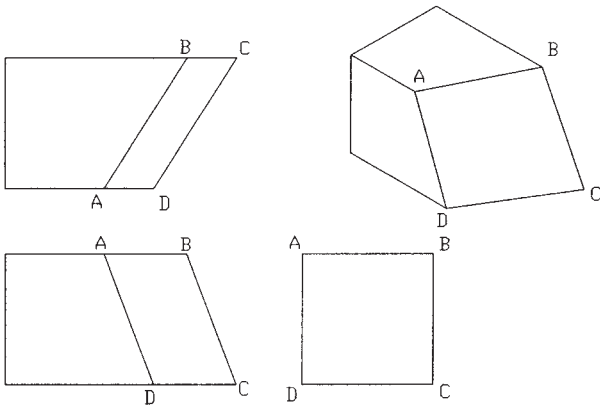


Figure 4-16

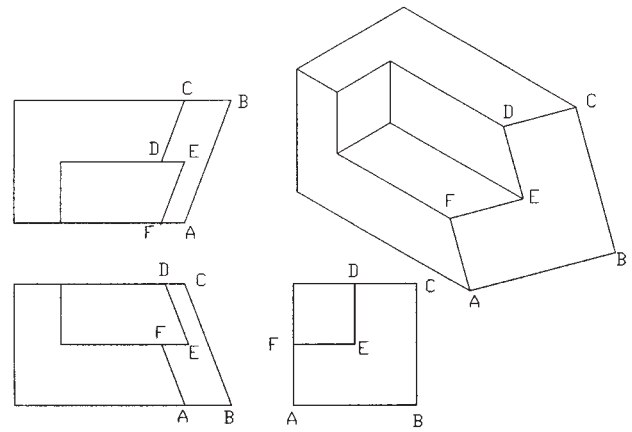
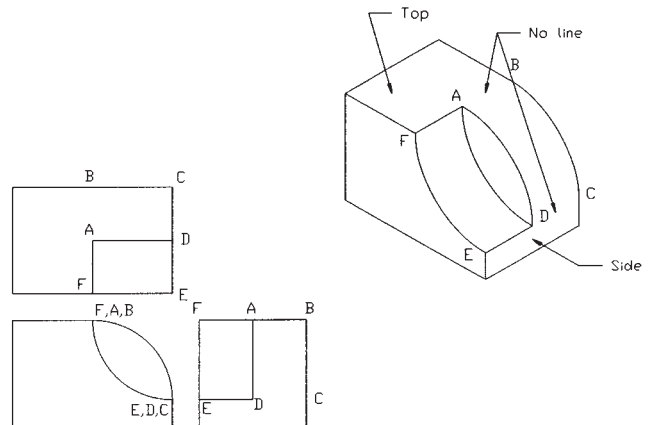


Figure 4-17

Rounded Surfaces

Figure 4-18 shows an object with two rounded surfaces. Note that as with slanted surfaces, an individual view is insufficient to define the shape of a surface. More than one view is needed to define the surface's shape accurately.

Figure 4-18



Convention calls for a smooth transition between rounded and flat surfaces; that is, no lines are drawn to indicate the tangency. Inventor includes a line to indicate tangencies between surfaces in the isometric drawings created using the multiview options but does not include them in the orthographic views. Tangency lines are also not included when models are rendered.

Figure 4-19 shows the drawing conventions for including lines for rounded surfaces. If a surface includes no vertical portions or no tangency, no line is included.

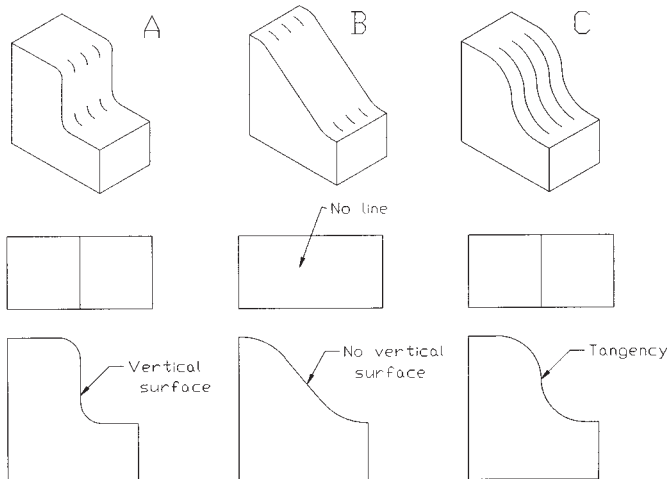


Figure 4-19

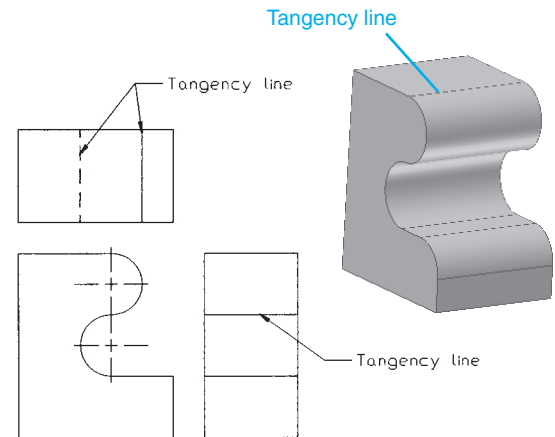


Figure 4-20

Figure 4-20 shows an object that includes two tangencies. Each is represented by a line. Note in Figure 4-20 that Inventor will add tangent lines to the 3D model. These lines will not appear in the orthographic views.

Figure 4-21 shows two objects with similar configurations; however, the boxlike portion of the lower object blends into the rounded portion exactly on its widest point, so no line is required.

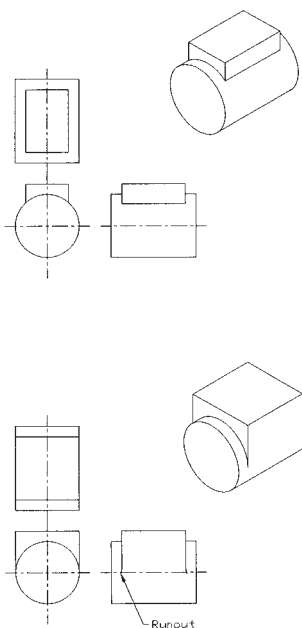
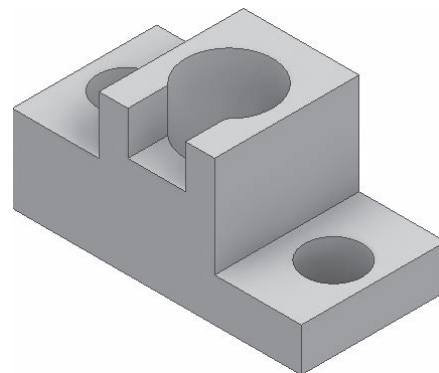


Figure 4-21

Orthographic Views with Inventor

Inventor will create orthographic views directly from models. Figure 4-22 shows a completed three-dimensional model. See Figure P4-7 for the model's dimensions. It was created using an existing file, **BLOCK, 3HOLE**. It will be used throughout this chapter to demonstrate orthographic presentation views.

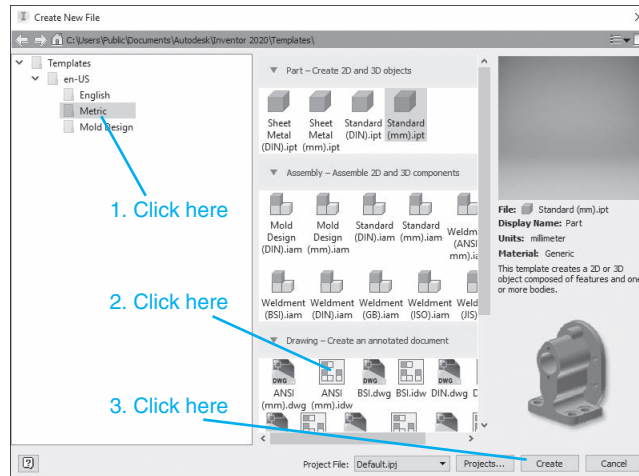
Figure 4-22



- 1 Start a new drawing, click the **Metric** tab, and select the **ANSI (mm).idw** option.

See Figure 4-23. ANSI stands for American National Standards Institute.

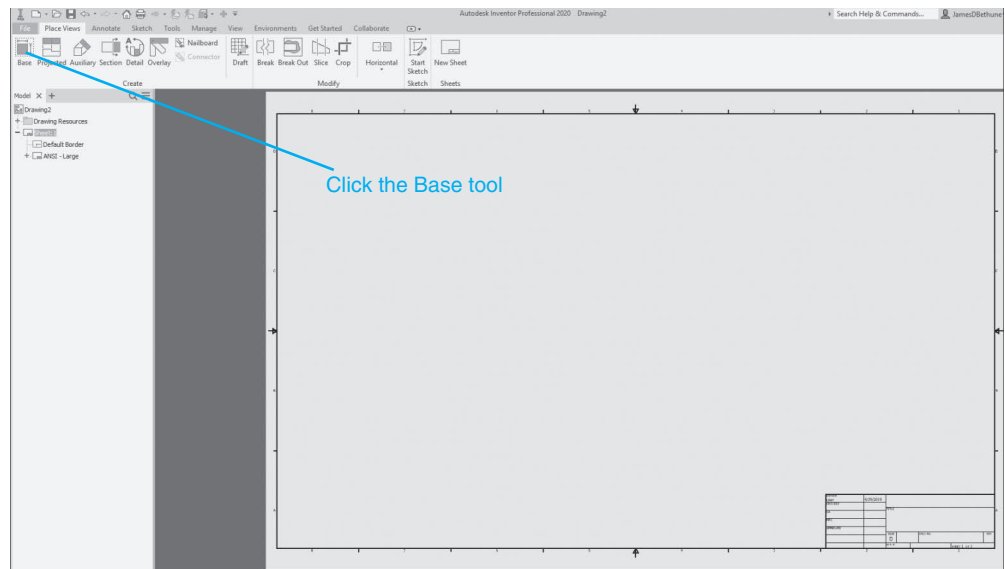
Figure 4-23



- 2 Click **Create**.

The drawing management screen will appear. See Figure 4-24.

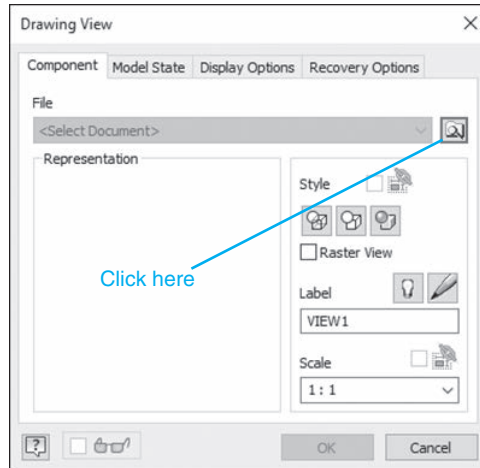
Figure 4-24



- 3 Click the **Base** tool located on the **Create** panel under the **Place Views** tab.

The **Drawing View** dialog box will appear. See Figure 4-25.

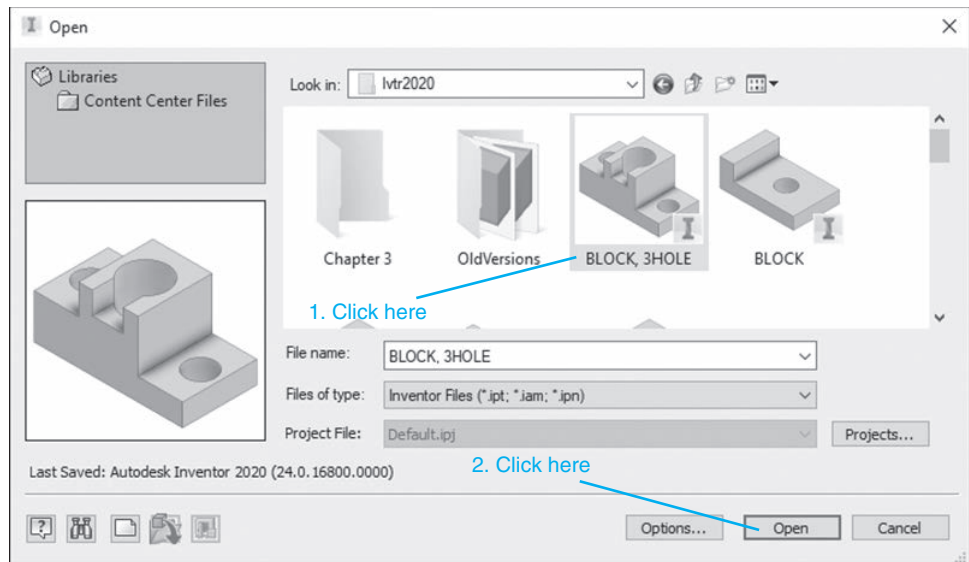
Figure 4-25



- 4 Click the **Open an existing file** button.

The **Open** dialog box will appear. See Figure 4-26.

Figure 4-26



- 5 Select the desired model. In this example, the model's file name is **BLOCK, 3HOLE**.

- 6 Click the **Open** box.

The **Drawing View** dialog box will appear. See Figure 4-27.

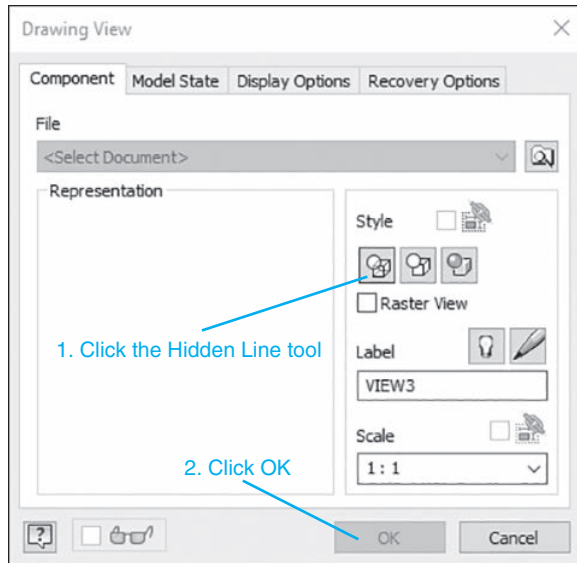


Figure 4-27



Figure 4-28

- 7 Ensure that the **Hidden line** option is active, and click **OK**.

Figure 4-28 shows the resulting orthographic view. The selection of orientation will vary with the model's original orientation.

The screen will include a border and a title block. The lettering in the title block may appear illegible. This is normal. The text will be legible when printed. The section on title blocks will explain how to work with title blocks.

EXERCISE 4-2 Creating Other Orthographic Views

- 1 The view shown in Figure 4-28 will be defined as a top view. Click and drag the border around the view and move it upward on the drawing screen. Click the **Projected View** tool on the **Create** panel under the **Place Views** tab.
- 2 Click the view already on the drawing screen.
- 3 Move the cursor downward from the view.
A second view will appear.
- 4 Select a location, click the left mouse button to place the view, then click the right mouse button and select the **Create** option.

Figure 4-29 shows the resulting two orthographic views. The initial view is defined as the **Top** view. This is a relative term based on the way the model was drawn. The initial view can be defined as the **Top** view, and the second view created from that front view.

EXERCISE 4-3 Adding Centerlines

Convention calls for all holes to be defined using centerlines. The views in Figure 4-29 do not include centerlines.

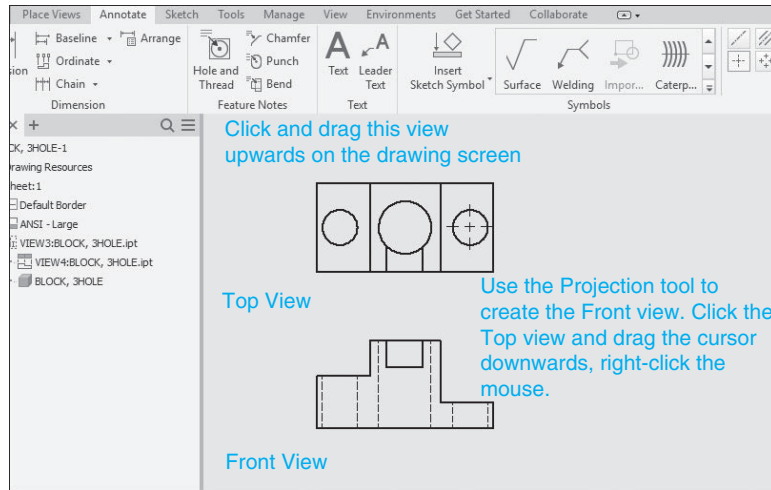


Figure 4-29

- 1 Click the **Annotate** tab.

See Figure 4-30.

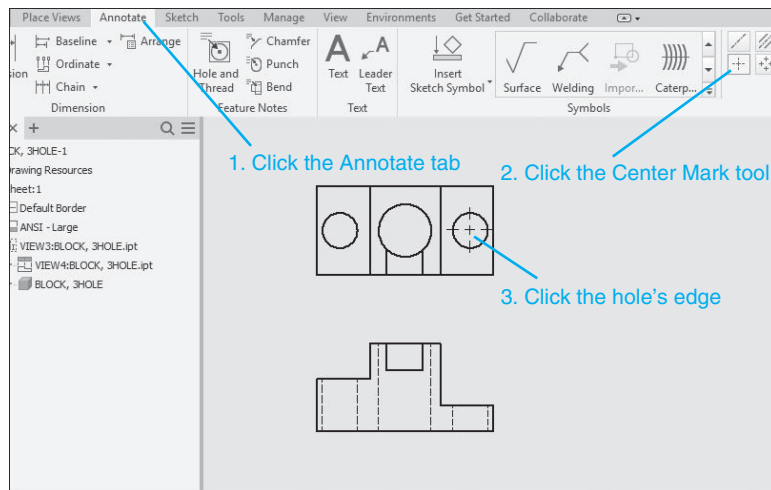


Figure 4-30

- 2 Click the **Center Mark** tool located on the **Symbols** panel under the **Annotate** tab.
- 3 Move the cursor into the drawing screen and click the edges of the holes in the top view. Right-click the mouse and select the **OK** option.
- 4 Click and drag the individual center lines for each hole in the **Top view** to create a single center line through all three holes as shown. When the cursor is moved onto a center mark, green-filled circles will appear. Click and drag these circles to form a single center line.

See Figure 4-31.

- 5** Click the **Centerline Bisector** tool located on the **Symbols** panel under the **Annotate** tab.
- 6** Click each side of the holes' projections in the front view.

Vertical centerlines will appear. See Figure 4-32.

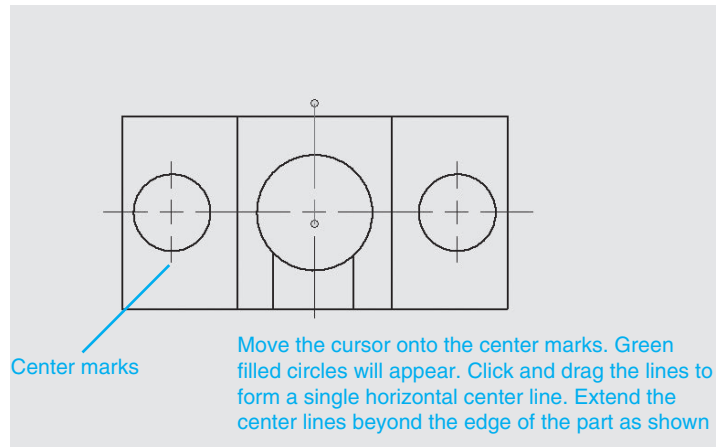


Figure 4-31

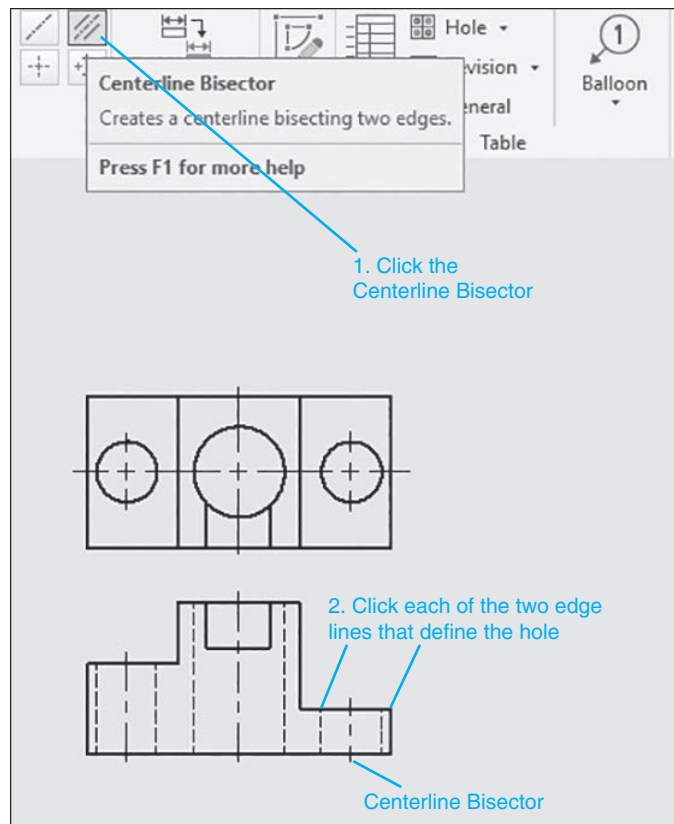


Figure 4-32

EXERCISE 4-4 Editing the Size of a Centerline

If the centerline patterns are too small or too big for the given feature, they may be edited to create a more pleasing visual picture.

- 1 Click the **Styles Editor** tool located on the **Styles and Standards** panel under the **Manage** tab.

Click the **+** sign to the left of the **Center Mark** heading, and select the **Center Mark (ANSI)** option. See Figure 4-33.

- 2 Change the center mark values as needed.

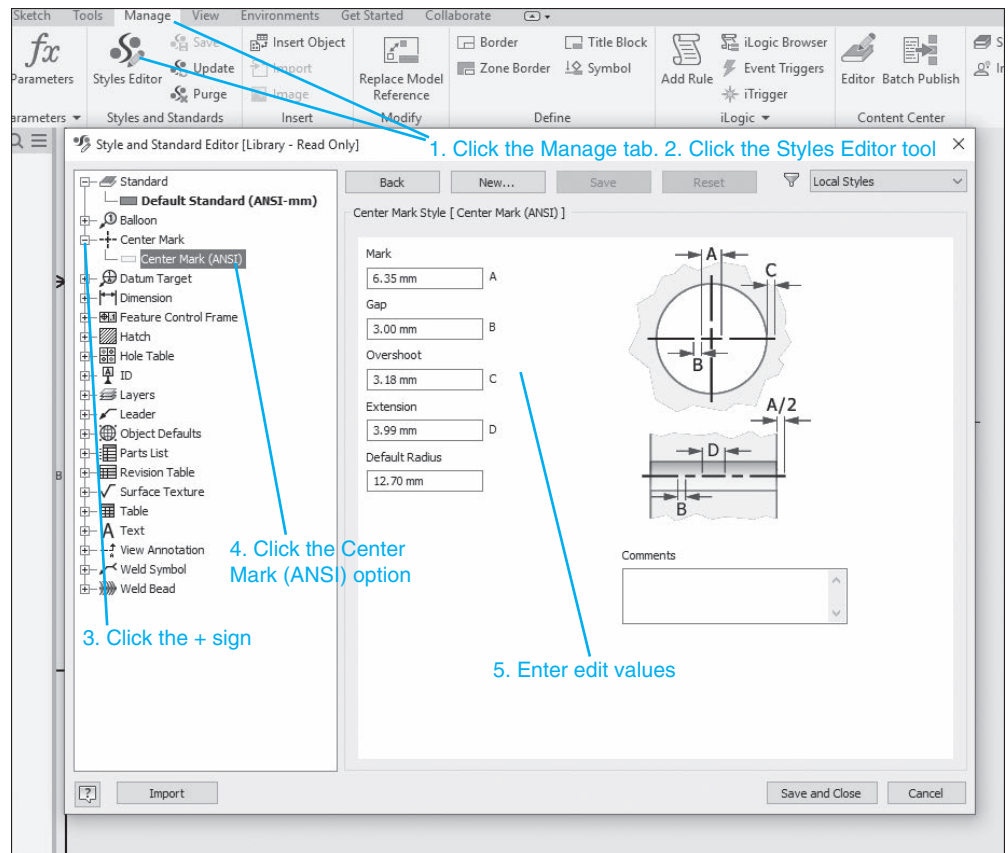


Figure 4-33

EXERCISE 4-5 Changing the Background Color of the Drawing Screen

- 1 Click the **Tools** tab at the top of the screen.

Select the **Application Options** option.

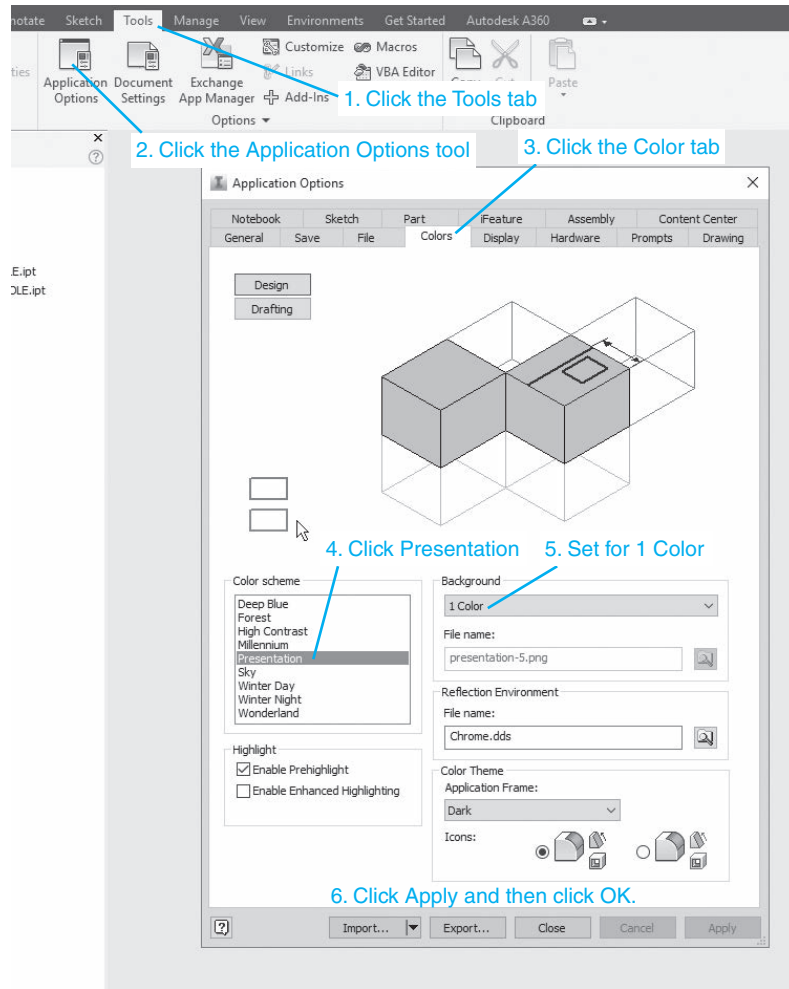
The **Application Options** dialog box will appear. See Figure 4-34.

- 2 Click the **Colors** tab.
- 3 Click the desired color, then **OK**.

The background color will be changed. In this example the **Presentation Color scheme** and **1 Color Background** were selected. This format is used throughout the book for visual clarity.

- 4 Click **Apply** and **OK**.

Figure 4-34



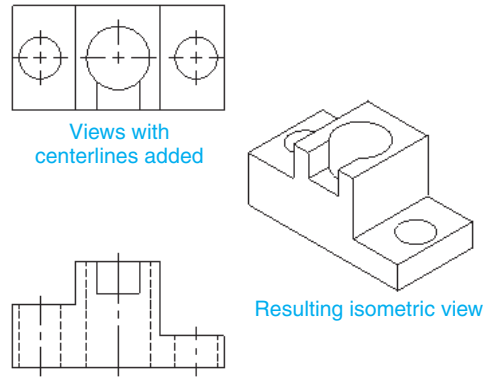
Isometric Views

An isometric view may be created from any view on the screen. The resulting orientation will vary according to the view selected. In this example, the front view is selected.

- 1 Access the **Create** panel under the **Place Views** tab and click the **Projected View** tool.
- 2 Click the **Front** orthographic view.
- 3 Move the cursor to the right of the front view and select a location for the isometric view by clicking the mouse.
- 4 Move the cursor slightly and click the right mouse button.
- 5 Select the **Create** option.

Figure 4-35 shows the resulting isometric view. Isometric views help visualize the orthographic views.

Figure 4-35



Section Views

section view: A view used to expose an internal surface of a model.

Some objects have internal surfaces that are not directly visible in normal orthographic views. **Section views** are used to expose these surfaces. Section views do not include hidden lines.

Any material cut when a section view is defined is hatched using section lines. There are many different styles of hatching, but the general style is evenly spaced 45° lines. This style is defined as ANSI 31 and will be applied automatically by Inventor.

Figure 4-36 shows a three-dimensional view of an object. The object is cut by a cutting plane. **Cutting planes** are used to define the location of the section view. Material to one side of the cutting plane is removed, exposing the section view.

cutting plane: A plane used to define the location of a section view.

Figure 4-36

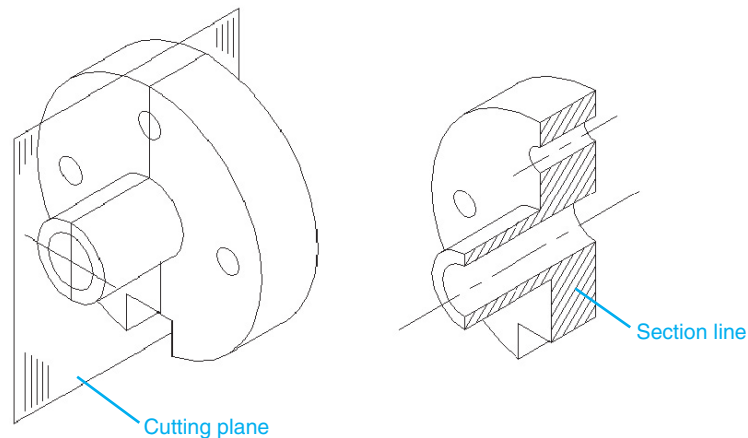


Figure 4-37 shows the same object presented using two dimensions. The cutting plane is represented by a cutting plane line. The cutting plane line is defined as A-A, and the section view is defined as view A-A.

All surfaces directly visible must be shown in a section view. In Figure 4-38, the back portion of the object is not affected by the section view and is directly visible from the cutting plane. The section view must include these surfaces. Note how the rectangular section blocks out part of the large hole. No hidden lines are used to show the hidden portion of the large hole.

Figure 4-37

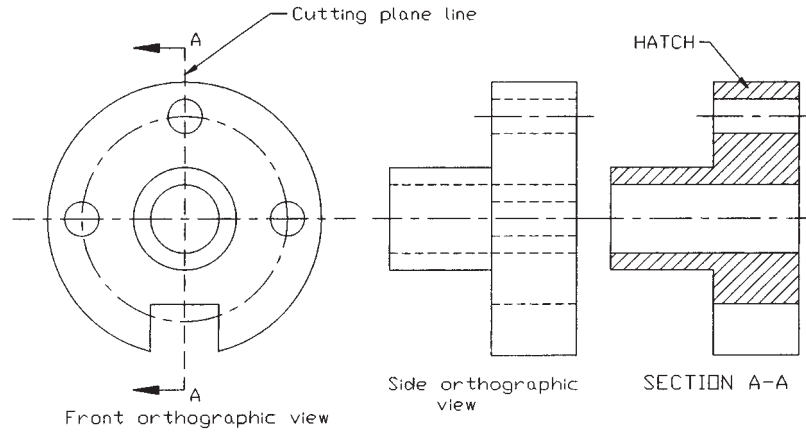
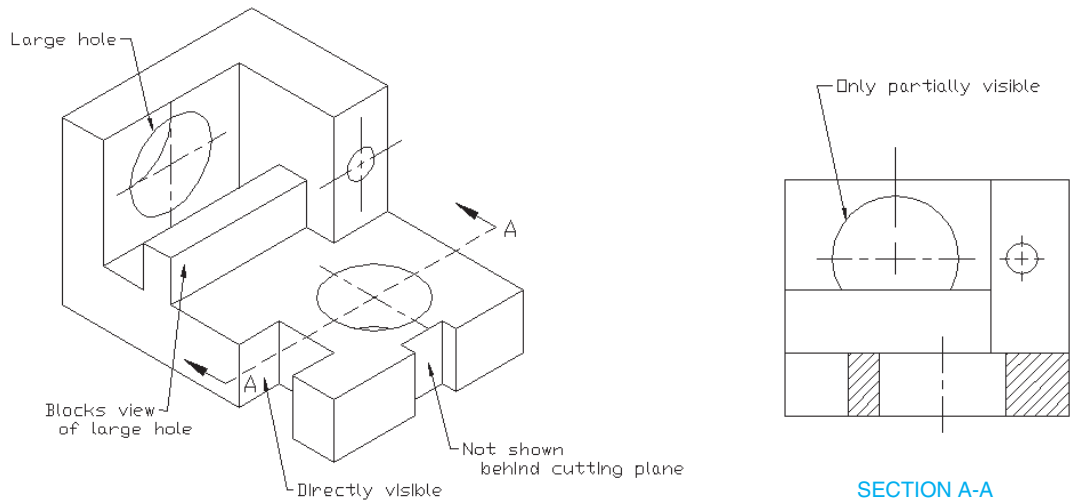


Figure 4-38



EXERCISE 4-6

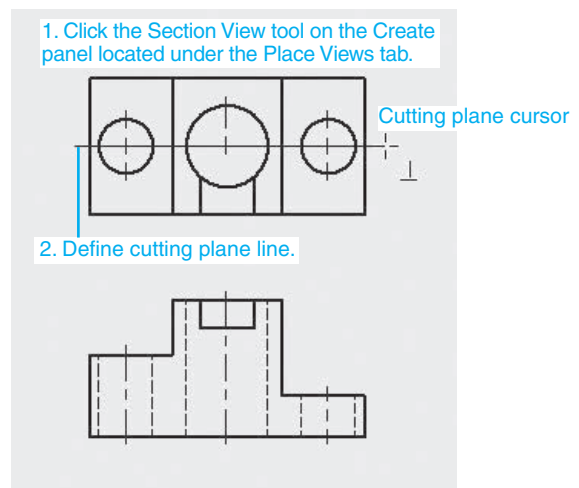
Drawing a Section View Using Inventor

Figure 4-39 shows the front and top views of the object defined in Figure P3-10. A section view will be created by first defining the cutting plane line in the top view, then projecting the section view below the front view.

- 1 Click the **Section View** tool on the **Create** panel under the **Place Views** tab, then click the top view.

The cursor will change to a +-like shape.

Figure 4-39



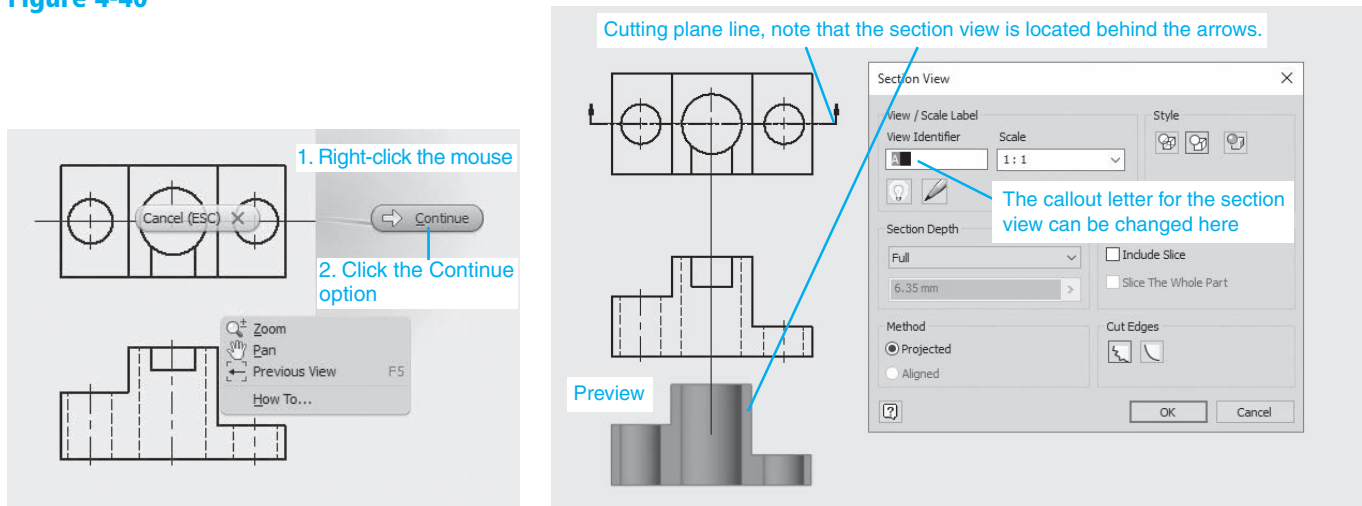
- 2 Define the cutting plane by defining two points on the top view.

See Figure 4-39. Note that if you touch the cursor to the endpoint of one of the hole's centerlines, a dotted line will follow the cursor, assuring that the cutting plane line is aligned with the holes' centerlines.

- 3 Right-click the mouse and select the **Continue** option.

The **Section View** dialog box will appear. See Figure 4-40.

Figure 4-40



- 4 Set the **Label** letter for **A**, the **Scale** for **1:1**, and **Style** for **Hidden Lines**.

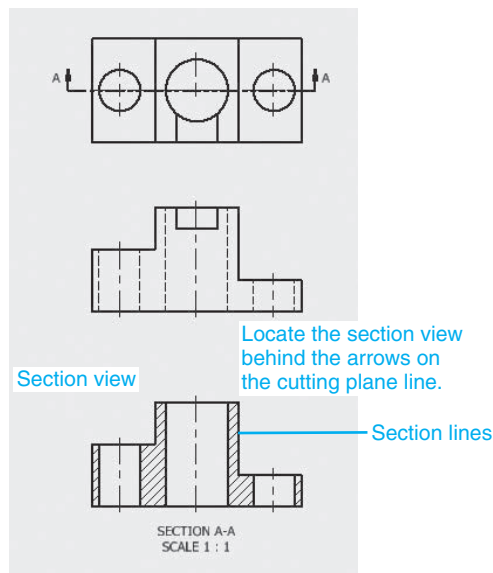
- 5 Move the cursor so as to position the section view below the front view.

- 6 Click the section view location.

- 7 Add the appropriate centerlines using the **Centerline Bisector** tool.

Figure 4-41 shows the resulting section view. Notice that the section view is defined as A-A, and the scale is specified. The arrows of the cutting plane line are directed away from the section view. The section view is located behind the arrows.

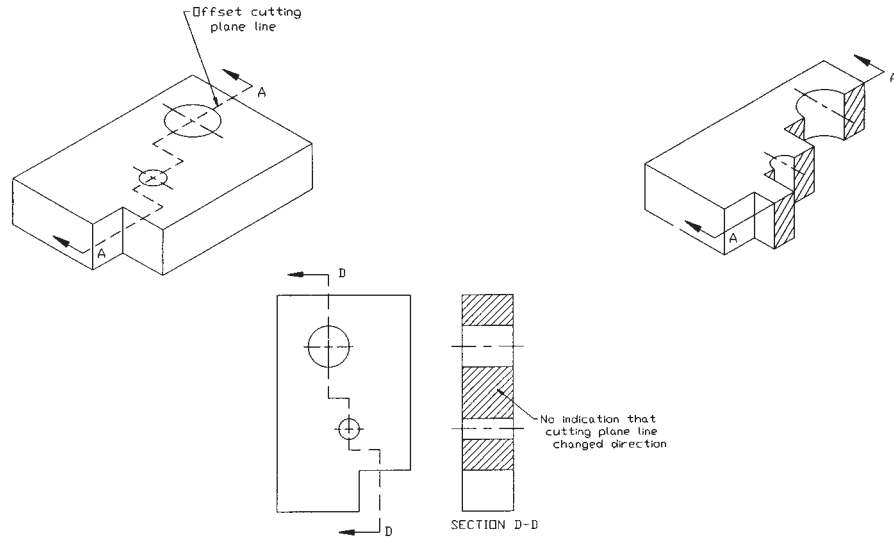
Figure 4-41



Offset Section Views

Cutting plane lines need not pass directly across an object, but may be offset to include several features. Figure 4-42 shows an object that has been cut using an offset cutting plane line.

Figure 4-42



EXERCISE 4-7

Creating an Offset Cutting Plane

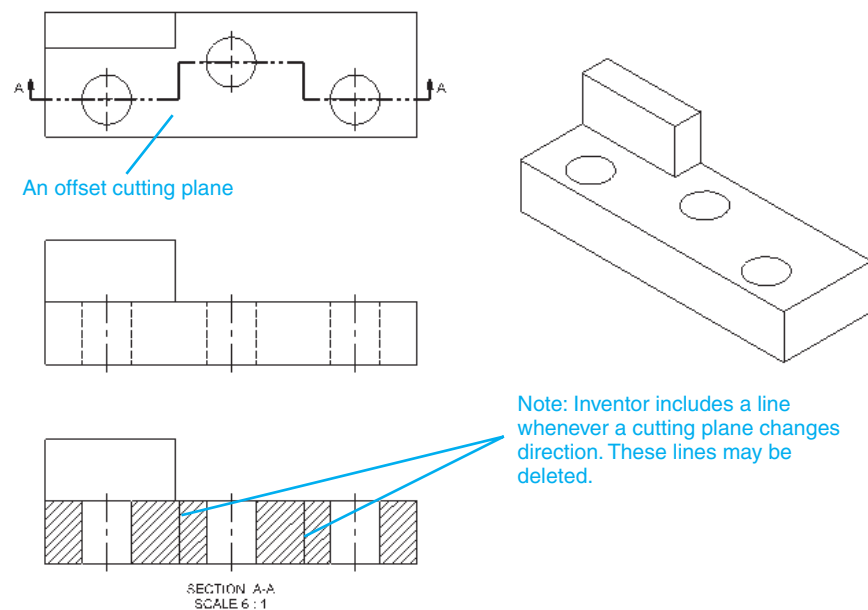
Figure 4-43 shows the front and top views of an object. The views were created using the **Create View**, **Projected View**, and **Centerline** tools.

- 1 Click the **Section View** tool, and click the top view.
- 2 Draw a cutting plane across the top view through the centers of each of the three holes.

When drawing an offset cutting plane line, show the line in either horizontal or vertical line segments.

- 3 Locate the section view below the front view and add the appropriate centerlines.

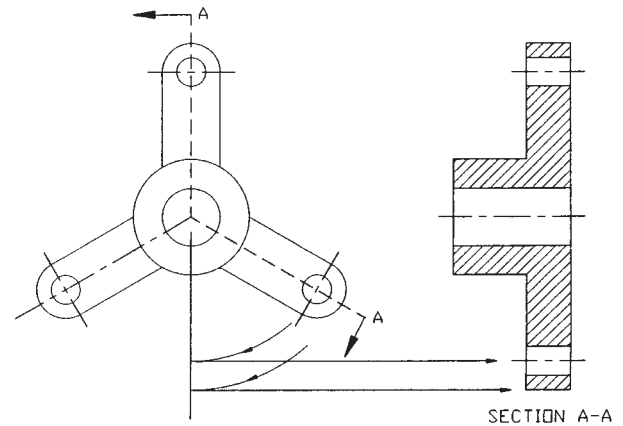
Figure 4-43



Aligned Section Views

Figure 4-44 shows an example of an aligned section view. Aligned section views are most often used on circular objects and use an angled cutting plane line to include more features in the section view, like an offset cutting plane line.

Figure 4-44



An aligned section view is drawn as if the cutting plane line ran straight across the object. The cutting plane line is rotated into a straight position, and the section view is projected.

Figure 4-45 shows an aligned section view created using Inventor.

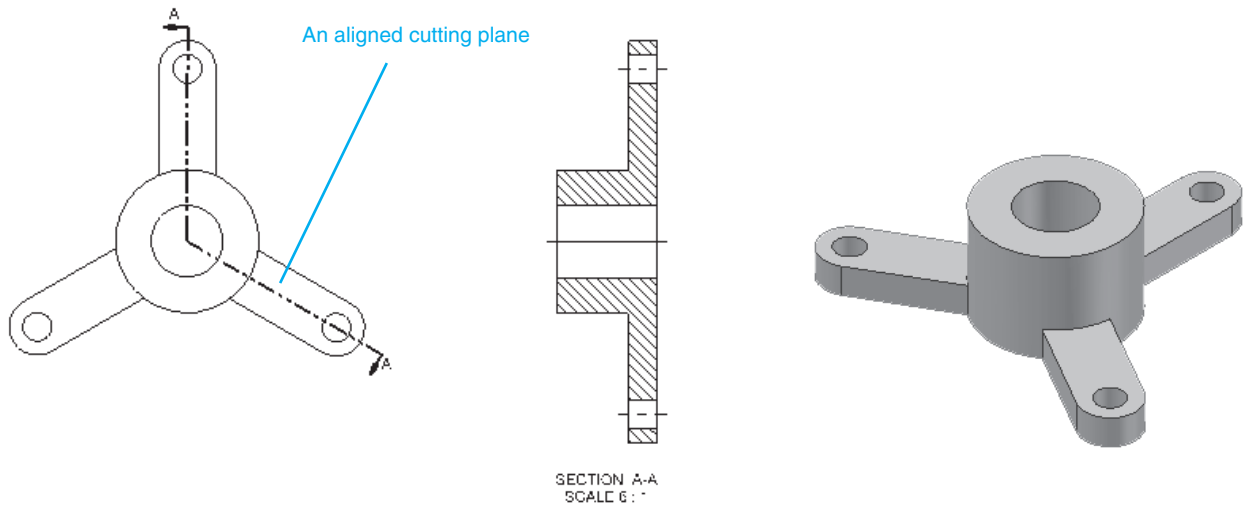


Figure 4-45

Detail Views

detail view: An enlarged view of a portion of a model.

Detail views are used to enlarge portions of an existing drawing. The enlargements are usually made of areas that could be confusing because of many crossing or hidden lines.

- 1 Click the **Detail View** tool on the **Create** panel under the **Place Views** tab, then click the view to be enlarged.

In this example, the top view was selected.

The **Detail View** dialog box will appear. See Figure 4-46.

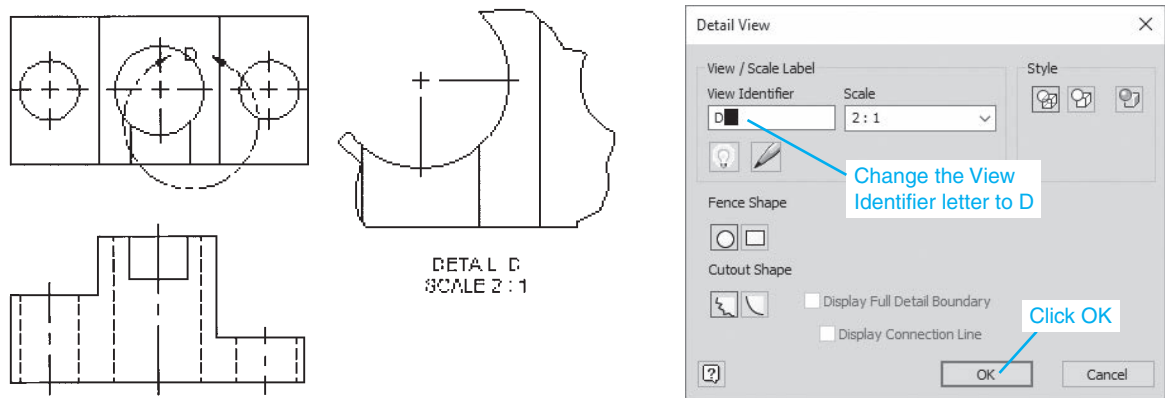


Figure 4-46

- 2 Set the **Label** letter to **D** and the **Scale** to **2:1**, then pick a point on the view.
 - 3 Move the cursor, creating a circle.
- The circle will be used to define the area of the detail view.
- 4 When the circle is of an appropriate diameter, click the left mouse button and move the cursor away from the view.
 - 5 Locate the detail view and click the location.
 - 6 Use the **Center Mark** tool to add a center mark to the circle in the Detail drawing.

Break Views

It is often convenient to break long, continuous shapes so that they take up less drawing space. Figure 4-47 shows a long L-bracket that has a continuous shape; that is, its shape is constant throughout its length. Figure 4-48 shows an orthographic view of the same L-bracket.

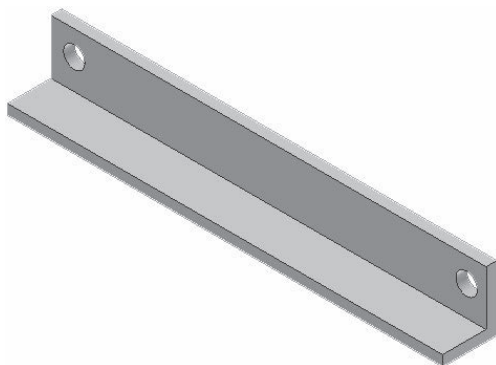
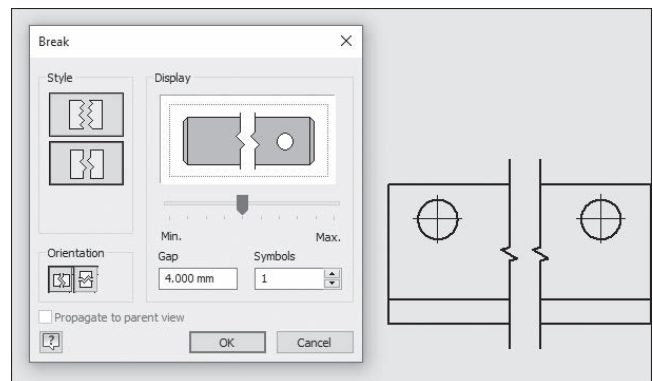


Figure 4-47



The overall dimension remains the same as the original

Figure 4-48

EXERCISE 4-9 Creating a Broken View

- 1 Click the **Break** tool located on the **Create** panel under the **Place Views** tab, then click the orthographic view.

The **Broken View** dialog box will appear.

- 2 Select the orientation of the break and the gap distance between the two portions of the L-bracket.

In this example, the gap distance is 1.00. Do not click the **OK** box. Define the break with the **Broken View** dialog box on the drawing screen.

- 3 Click a point near the left end of the L-bracket, then move the cursor to the right and click a second point near the right end of the L-bracket.

Figure 4-48 shows the resulting broken view.

Multiple Section Views

It is acceptable to take more than one section view of the same object to present a more complete picture of the object. Figures 4-49 and 4-50 show objects that use more than one section view.

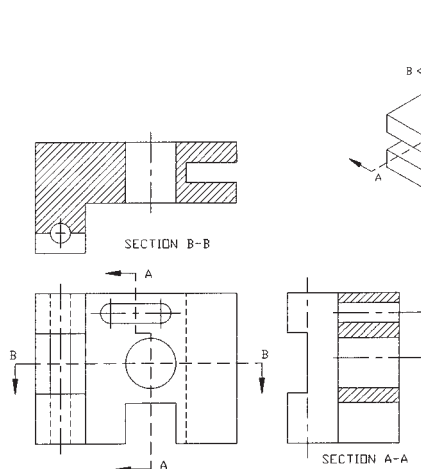


Figure 4-49

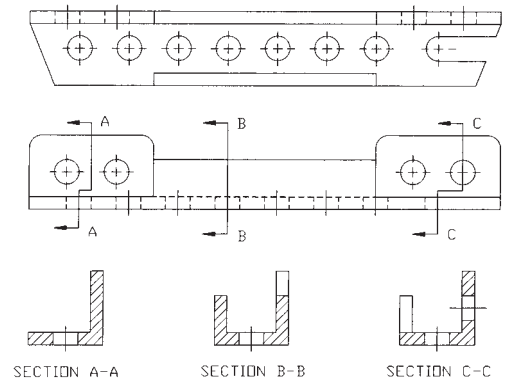


Figure 4-50

Auxiliary Views

auxiliary view: An orthographic view drawn perpendicular to a slanted or oblique surface.

Auxiliary views are orthographic views used to present true-shape views of slanted surfaces. Figure 4-51 shows an object with a slanted surface that includes a hole drilled perpendicular to the slanted surface. Note how the right-side view shows the hole as an ellipse and that the surface *A-B-C-D* is foreshortened; that is, it is not shown at its true size. Surface *A-B-C-D* does appear at its true shape and size in the auxiliary view. The auxiliary view was projected at 90° from the slanted surface so as to generate a true-shape view.

Figure 4-52 shows an object that includes a slanted surface and hole.

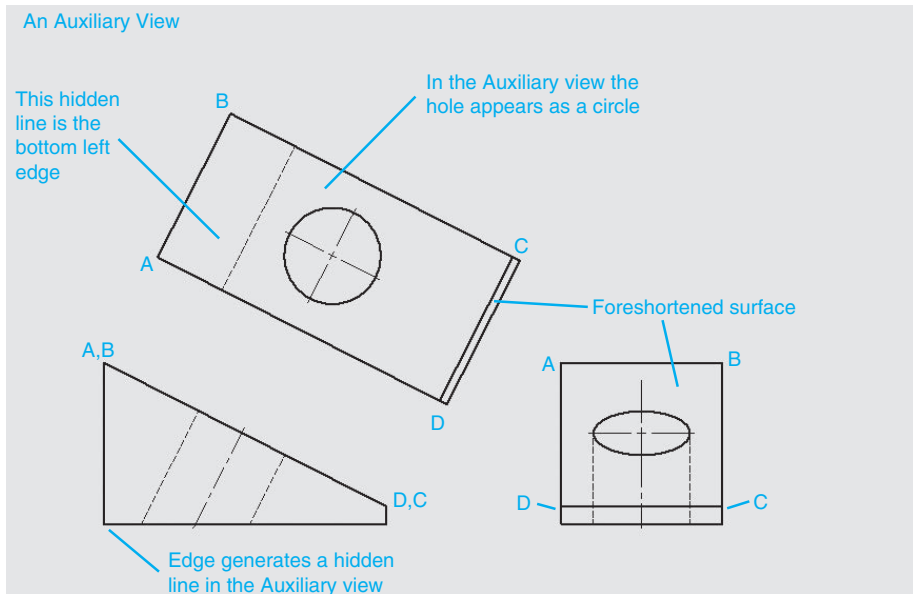
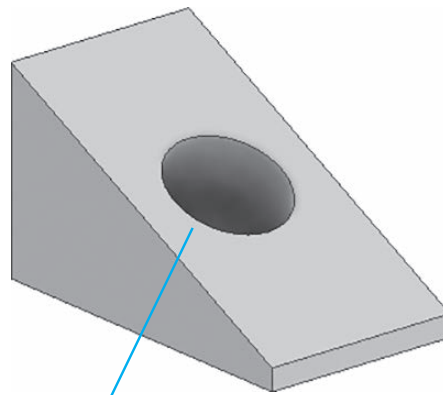


Figure 4-51



An object with hole perpendicular to the slanted surface

Figure 4-52

EXERCISE 4-10 Drawing an Auxiliary View

- 1** Create a drawing using the **ANSI (mm).ipt** format. Click the **Base View** and **Projected View** tools on the **Create** panel under the **Place Views** tab, and create a front and a right-side view as shown in Figure 4-53.

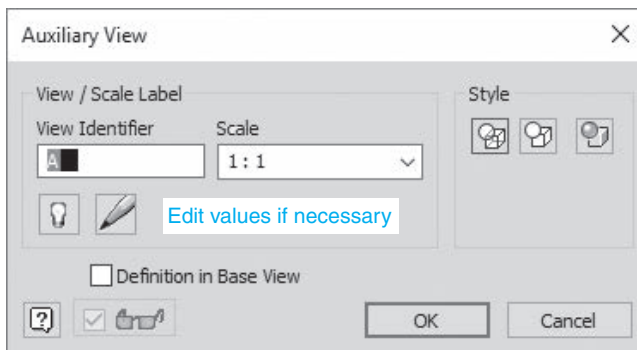
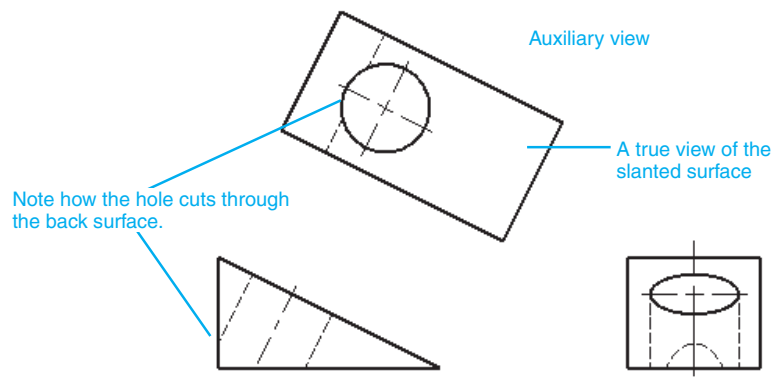
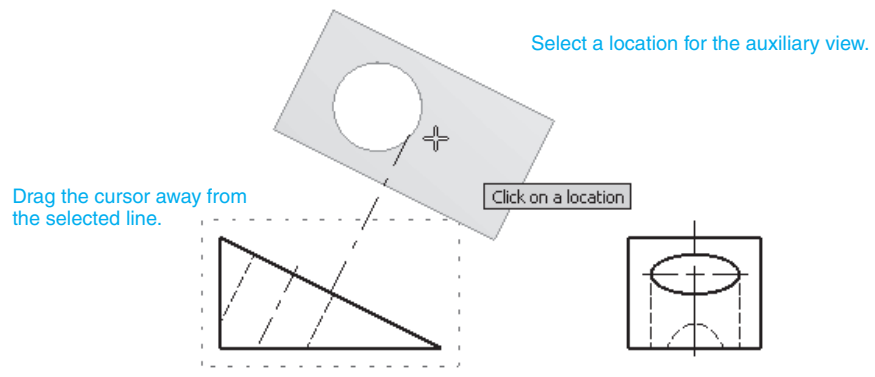
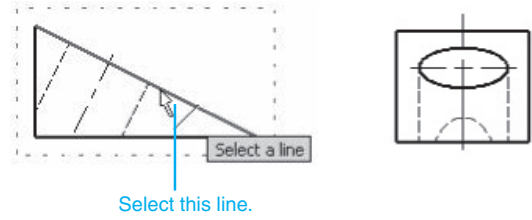
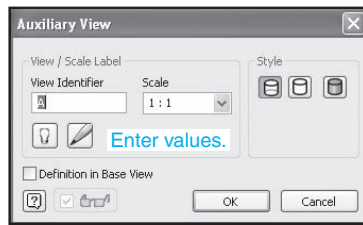
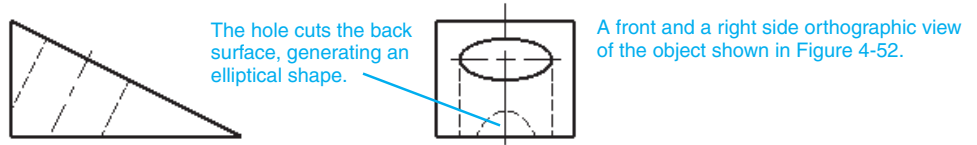
Click the **Auxiliary View** tool, then the front view.

- 2** The **Auxiliary View** dialog box will appear.
- 3** Enter the appropriate settings, then click the slanted edge line in the front view.

In this example, a scale of 1:1 was used.

- 4** Move the cursor away from the front view and select a location for the auxiliary view.
- 5** Click the left mouse button and create the auxiliary view.

Figure 4-53



ASME Y14.3-2003

Drawing Standards

There are two sets of standards used to define the projection and placement of orthographic views: the ANSI and the ISO. The ANSI calls for orthographic views to be created using third-angle projection and is the accepted method for use in the United States. See the American Society of Mechanical Engineers (ASME) publication ASME Y14-3-2003. Some countries other than the United States use first-angle projection. See ISO publication 128-30.

This chapter has presented orthographic views using third-angle projections as defined by ANSI. However, there is so much international commerce happening today that you should be able to work in both conventions, just as you should be able to work in both inches and millimeters.

Figure 4-54 shows a three-dimensional model and three orthographic views created using third-angle projection and three orthographic views created using first-angle projection. Note the differences and similarities. The front view in both projections is the same. The top views are the same, but are in different locations. The third-angle projection presents a right side view, whereas the first-angle projection presents a left side view.

Figure 4-54

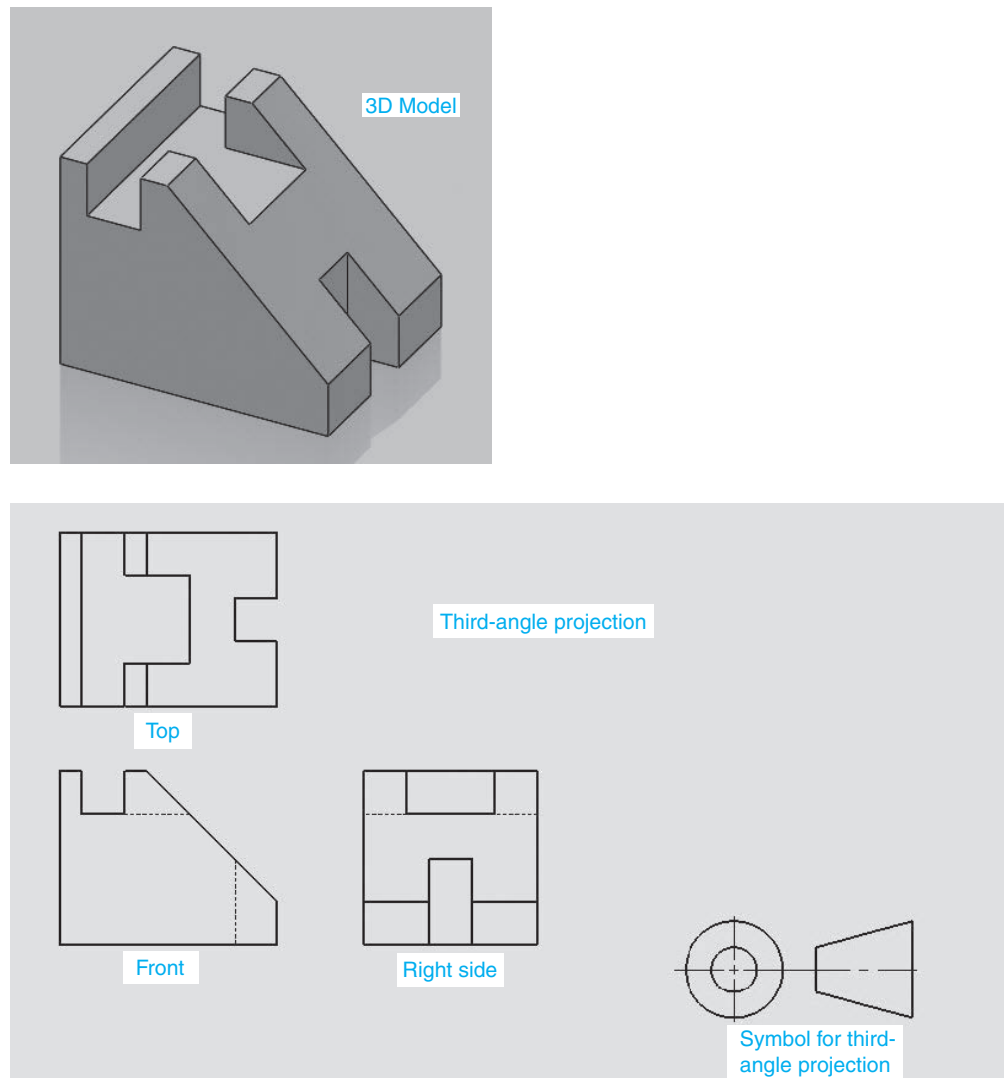


Figure 4-54
(Continued)

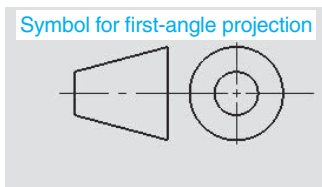
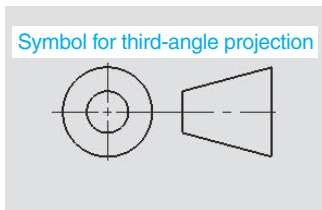
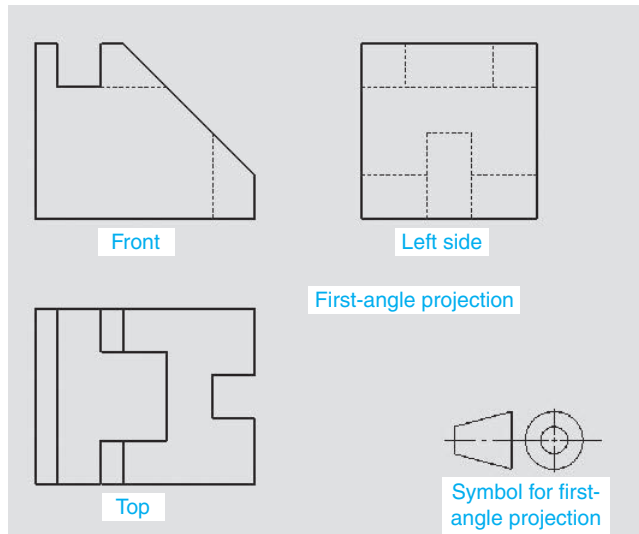


Figure 4-55 shows the drawing symbols for first- and third-angle projections. These symbols can be added to a drawing to help the reader understand which type of projection is being used. These symbols were included in the projections presented in Figure 4-54.

Third- and First-Angle Projections

Figure 4-56 shows an object with a front orthographic view and two side orthographic views: one created using third-angle projection, and the other created using first-angle projection. For third-angle projections, the orthographic view is projected on a plane located between the viewer's position and the object. For first-angle projections, the orthographic view

Figure 4-55

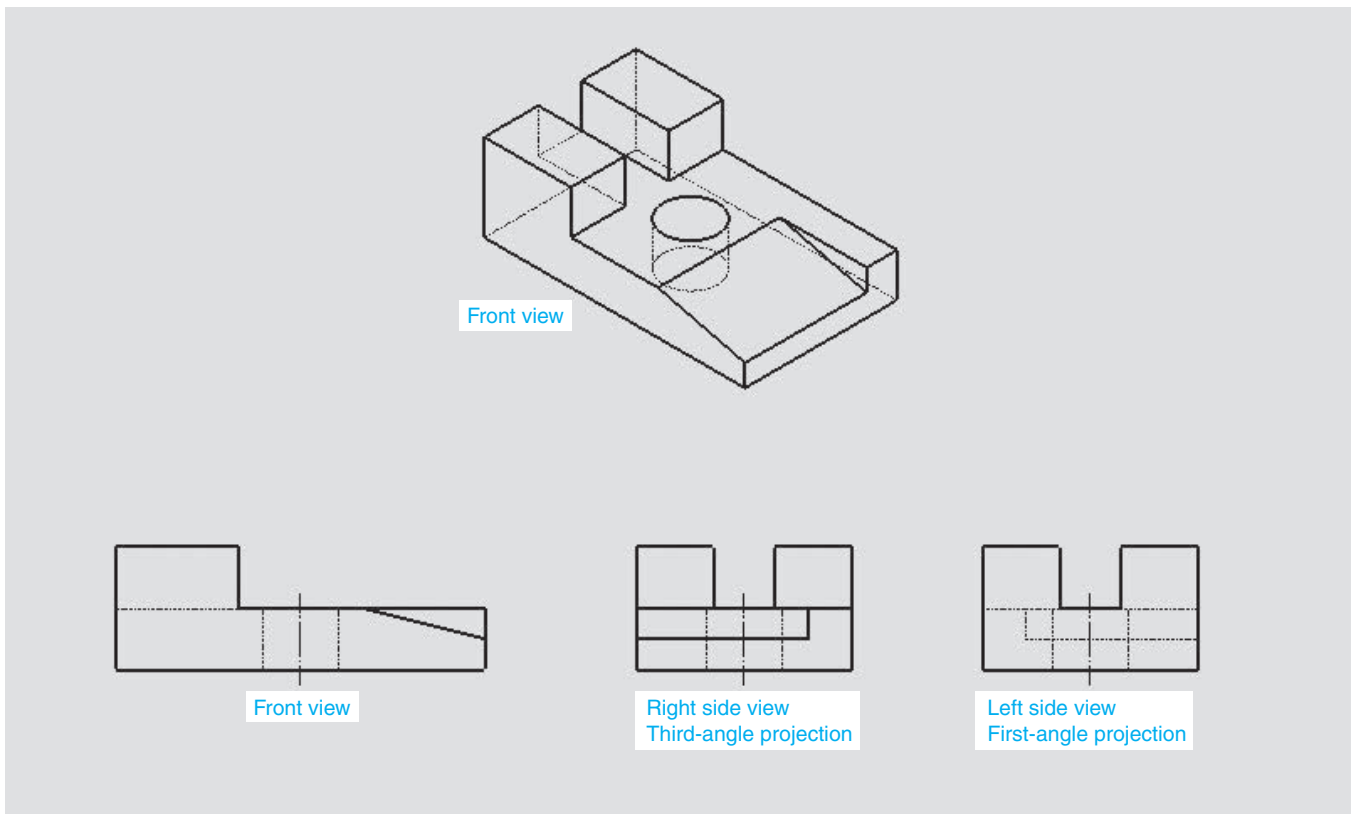


Figure 4-56

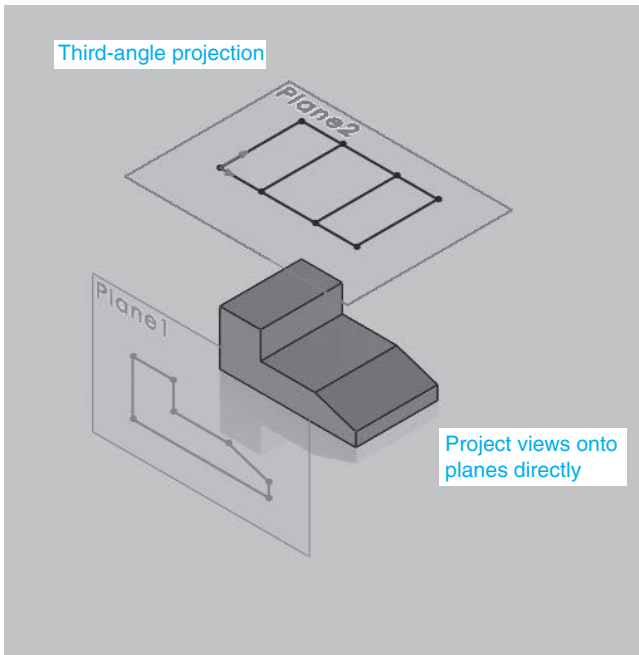


Figure 4-57

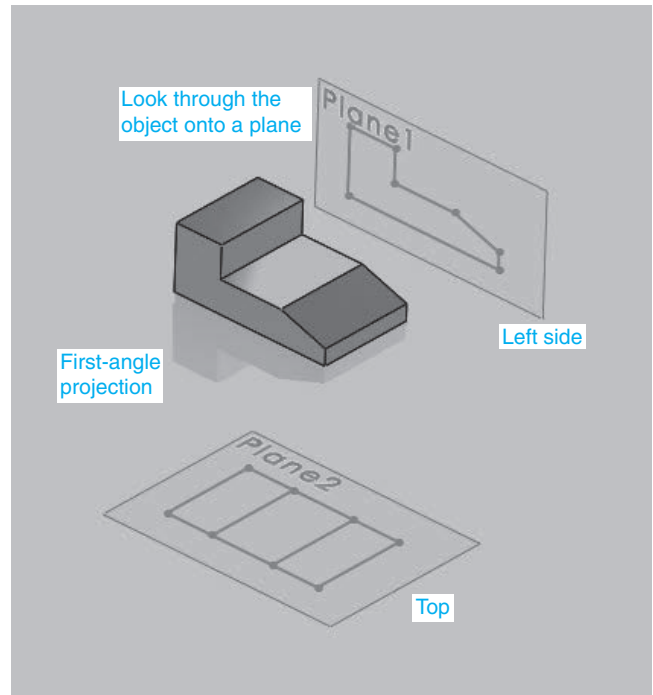


Figure 4-58

is projected on a plane located beyond the object. The front and top views for third- and first-angle projections appear the same, but they are located in different positions relative to the front view.

The side orthographic views are different for third- and first-angle projections. Third-angle projection uses a right side view located to the right of the object. First-angle projections use a left side view located to the right of the object. Figures 4-57 and 4-58 show the two different side view projections for the same object. For third-angle projection, the viewer is located on the right side of the object and creates the side orthographic view on a plane located between the view position and the object. The viewer looks directly at the object. For first-angle projection, the viewer is located on the left side of the object and creates the side orthographic view on a plane located beyond the object. The viewer looks through the object.

To help understand the difference between side view orientations for third- and first-angle projections, locate your right hand with the heel facing down and the thumb facing up. Rotate your hand so that the palm is facing up—this is the third-angle projection orientation. Return to the thumb up position. Rotate your hand so that the palm is down—this is the first-angle view orientation.

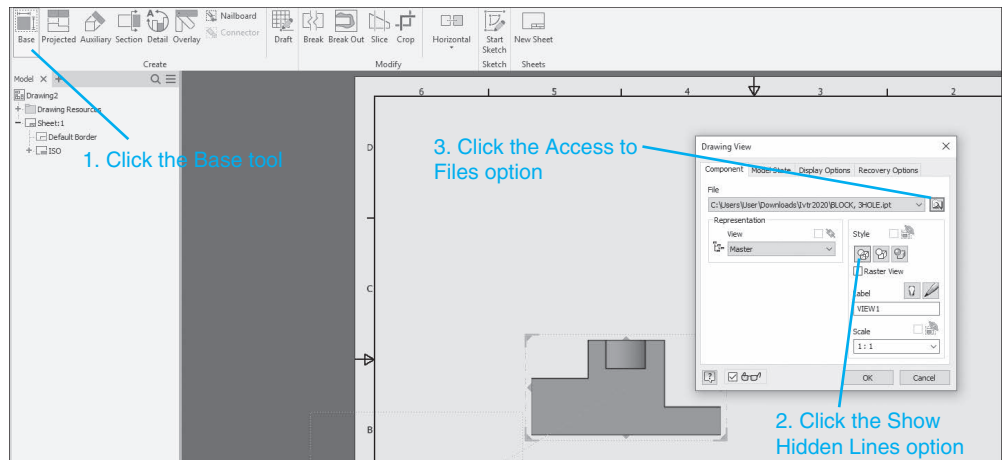
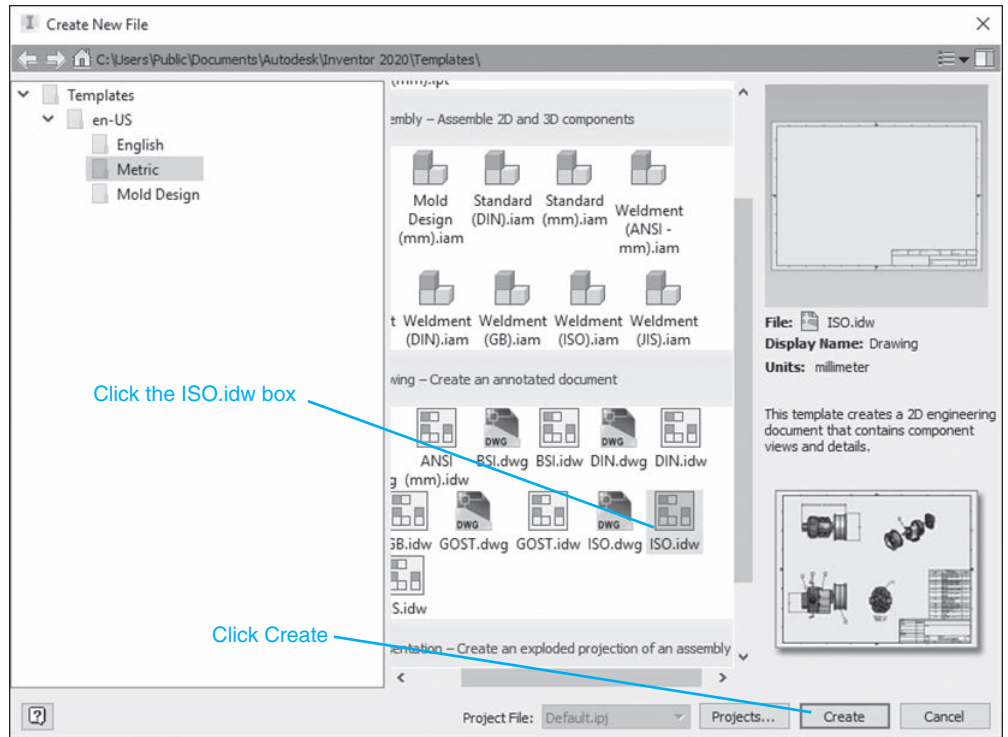
To create first-angle projections using Inventor:

- 1 Start a **New** drawing using the **ISO.idw** template.

This template will automatically create first-angle projection drawings.

- 2 Click the **Base** tool.
- 3 Select the appropriate file.
- 4 Select the orientation.
- 5 Use the **Projected View** tool to select and position the views (Figure 4-59).

Figure 4-59



Chapter Summary

This chapter introduced orthographic drawings using third-angle projection in accordance with ANSI standards. Conventions were demonstrated for objects with normal surfaces, hidden lines, slanted surfaces, compound lines, oblique surfaces, and rounded surfaces.

Inventor creates orthographic views directly from models. The tools on the **Create** panel and the **Annotate** panel were introduced for managing orthographic presentation views. Isometric views can also be created from models.

Section views are used to expose internal surfaces that are not directly visible in normal orthographic views. Cutting planes were used to define the location of section views. Offset and aligned section views also were created.

Techniques for creating detail views, broken views, and auxiliary views were demonstrated as well.

Chapter Test Questions

Multiple Choice

Circle the correct answer.

1. Which of the following is not one of the three views generally taken of an object?
 - a. Front
 - b. Top
 - c. Left
 - d. Right
2. In the precedence of lines, a hidden line covers a(n) _____ line.
 - a. continuous
 - b. center
 - c. compound
 - d. oblique
3. Which of the following is used to define a section view?
 - a. A cutting plane
 - b. A section line
 - c. A centerline
4. Section lines are used to define which of the following on a section view?
 - a. The outside edges of the section cut
 - b. The location of the section view
 - c. The areas where the section view passes through solid material

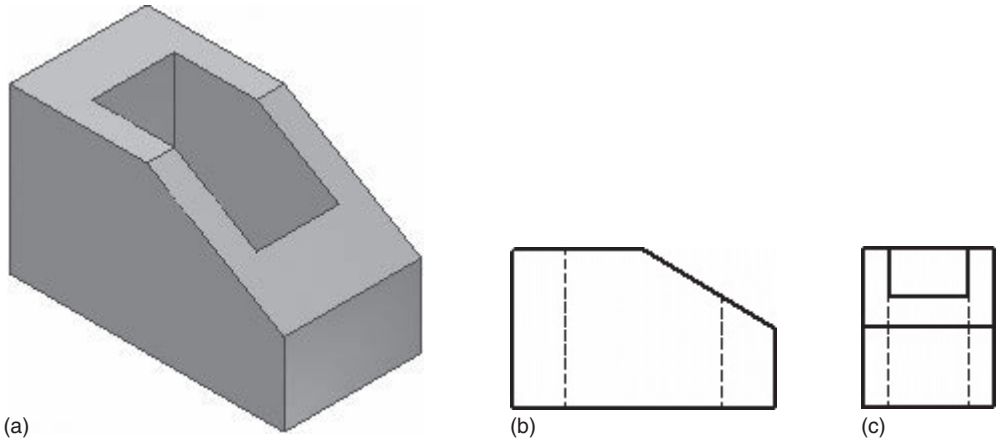


Figure MC4-1

5. Given the model shown in Figure MC4-1, which is the correct top view?
a. b. c.
6. Given the model shown in Figure MC4-1, which is the correct front view?
a. b. c.
7. Given the model shown in Figure MC4-2, which is the correct top view?
a. b. c.
8. Given the model shown in Figure MC4-2, which is the correct right-side view?
a. b. c.

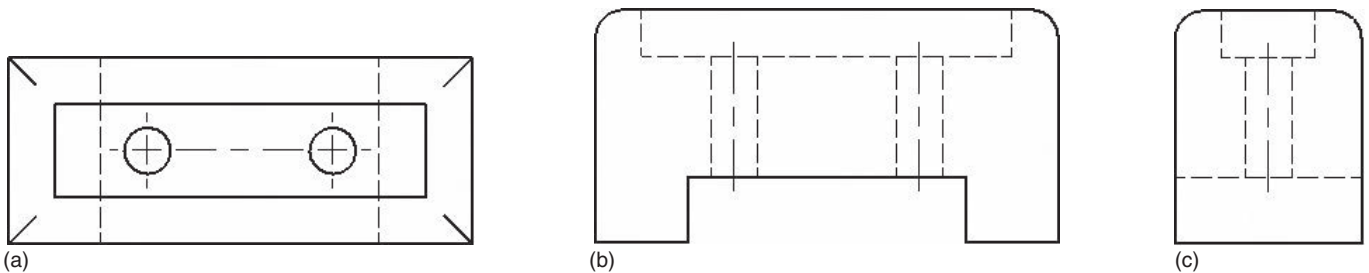
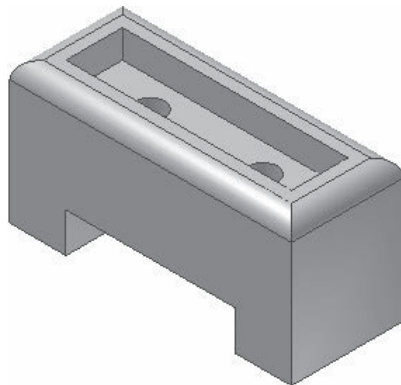


Figure MC4-2

9. Given the model shown in Figure MC4-2, which is the correct top view?
 a. b. c.
10. Given the model shown in Figure MC4-2, which is the correct front view?
 a. b. c.

Matching

Given the drawing shown in Figure MC4-3, identify the types of lines used to create the drawing.

Column A

- a. _____
- b. _____
- c. _____
- d. _____
- e. _____

Column B

- 1. Centerlines
- 2. Cutting plane line
- 3. Continuous line
- 4. Section line
- 5. Hidden line

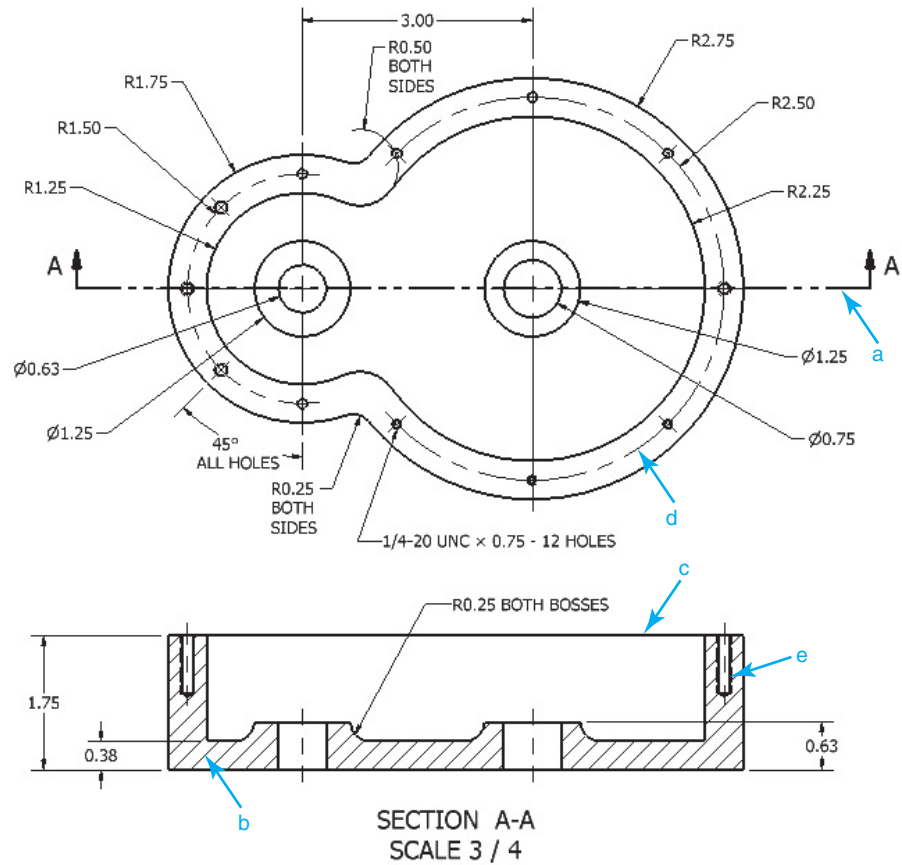


Figure MC4-3

True or False

Circle the correct answer.

- 1. True or False:** Orthographic views are two-dimensional views used to define three-dimensional models.
- 2. True or False:** Normal surfaces are surfaces located 90° to each other.
- 3. True or False:** Hidden lines are not used in orthographic views.
- 4. True or False:** A compound line is formed when two slanted surfaces intersect.
- 5. True or False:** An oblique surface is a surface that is slanted in two different directions.
- 6. True or False:** Center points cannot be edited; they can be used only as they appear on the drawing screen.
- 7. True or False:** A section view can be taken only across an object's centerline.
- 8. True or False:** Aligned section views are most often used on circular objects.
- 9. True or False:** A detail view is used to enlarge portions of an existing drawing.
- 10. True or False:** Break views are used to shorten long continuous shapes so they can fit within the drawing screen.

Chapter Project

Project 4-1

Draw a front, a top, and a right-side orthographic view of each of the objects in Figures P4-1 through P4-24. Make all objects from mild steel.

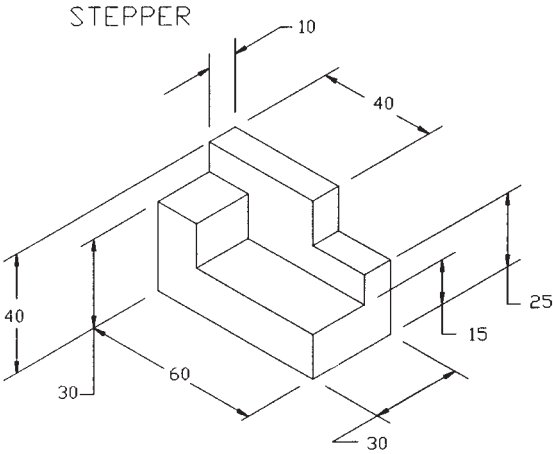


Figure P4-1
MILLIMETERS

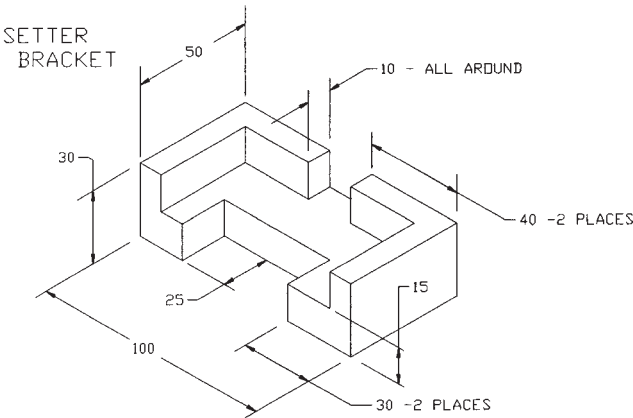
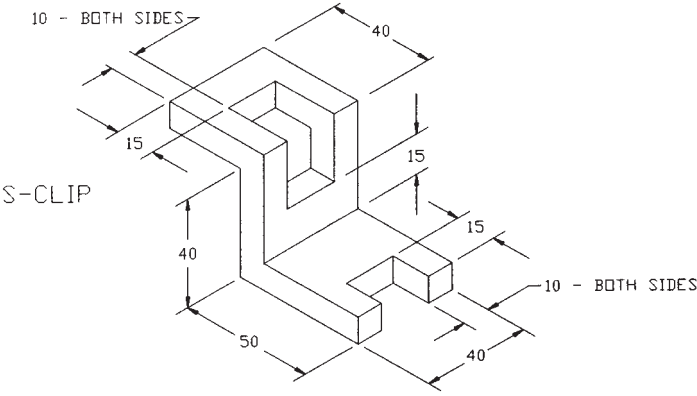


Figure P4-2
MILLIMETERS



MATL = 10mm SAE 1020 STEEL

Figure P4-3
MILLIMETERS

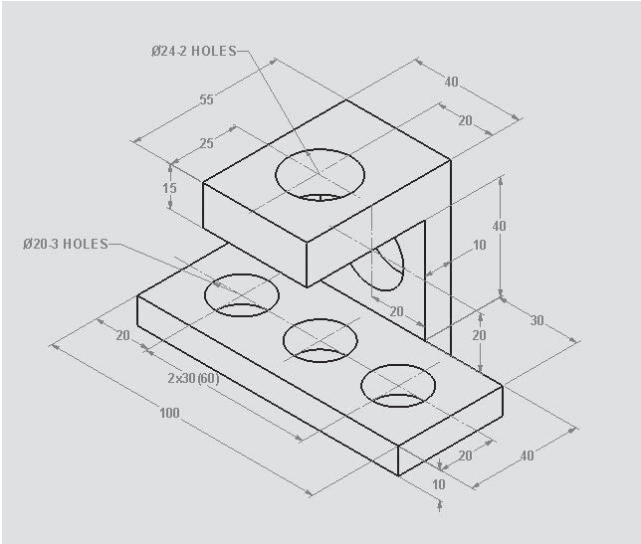


Figure P4-4
MILLIMETERS

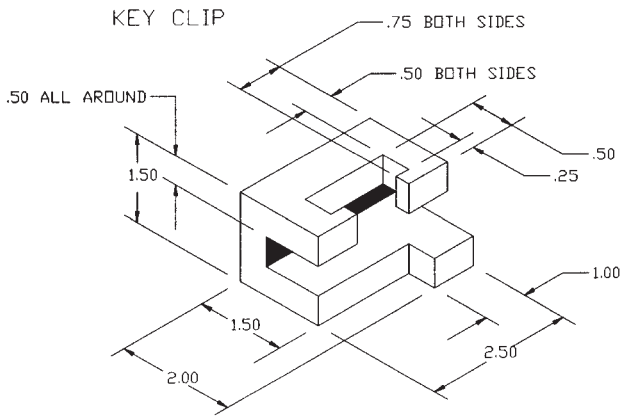


Figure P4-5
INCHES

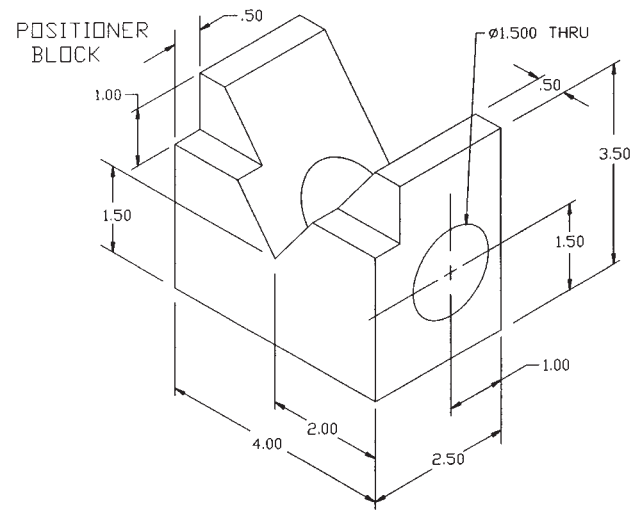


Figure P4-6
INCHES

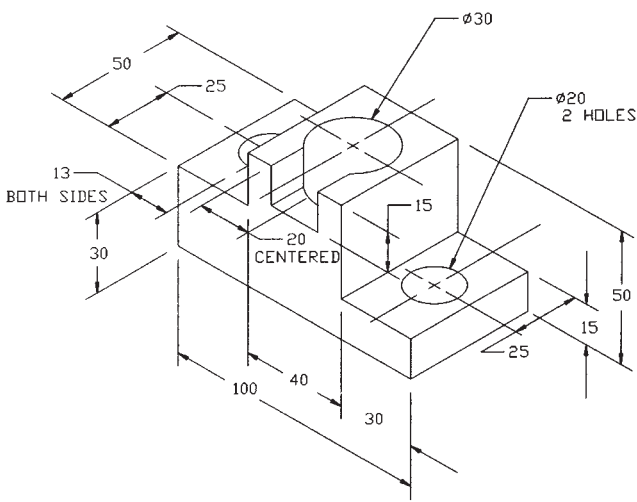


Figure P4-7
MILLIMETERS

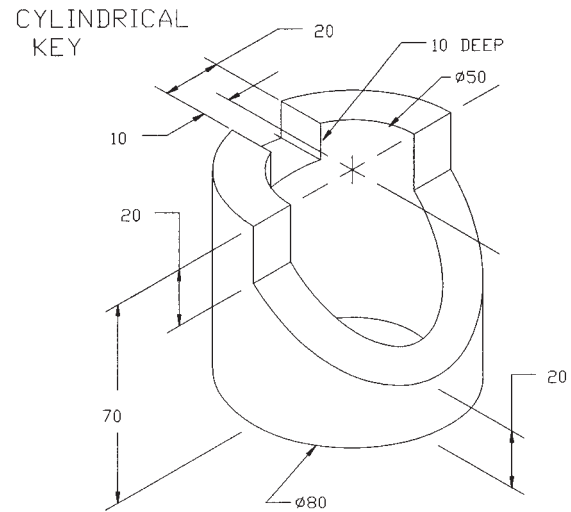


Figure P4-8
MILLIMETERS

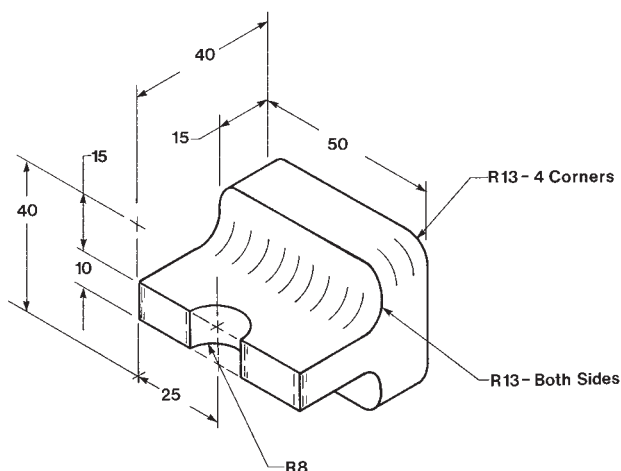


Figure P4-9
MILLIMETERS

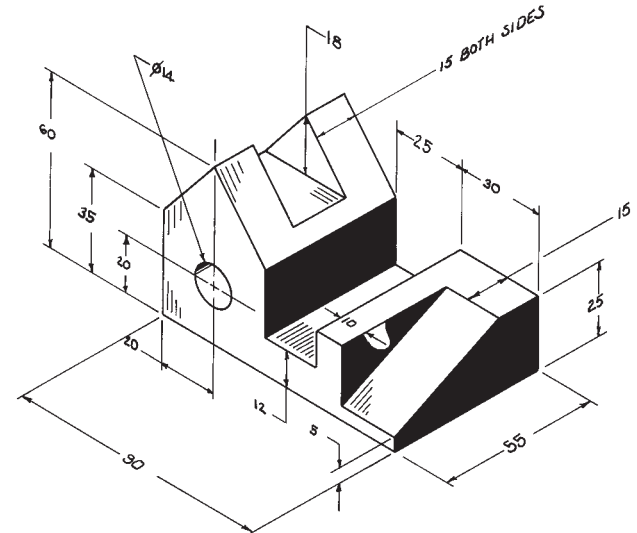


Figure P4-10
MILLIMETERS

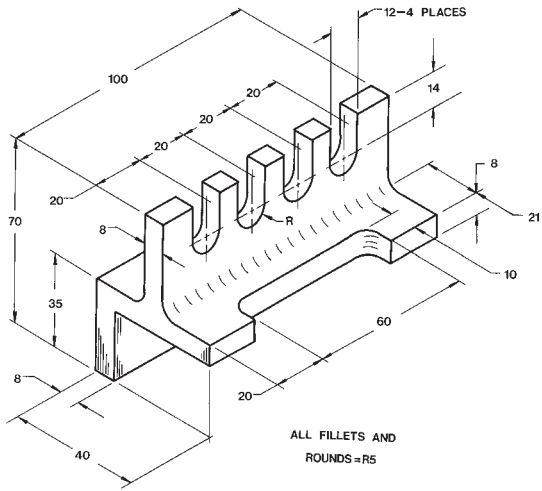


Figure P4-17
MILLIMETERS

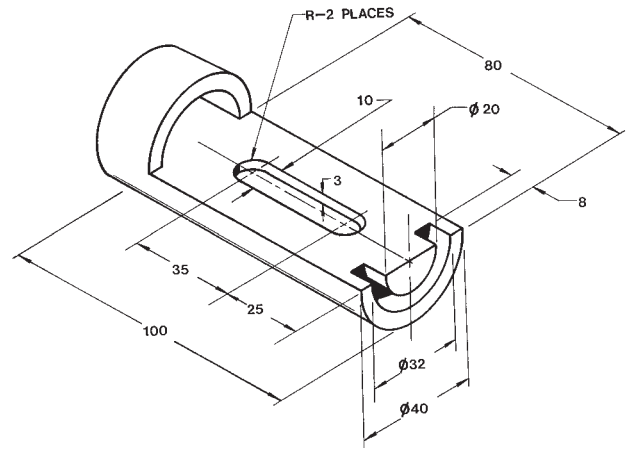


Figure P4-18
MILLIMETERS

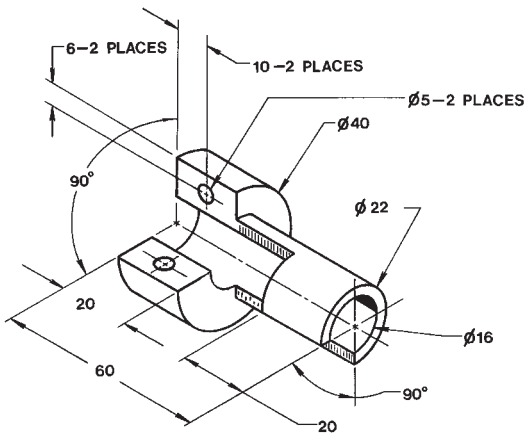


Figure P4-19
MILLIMETERS

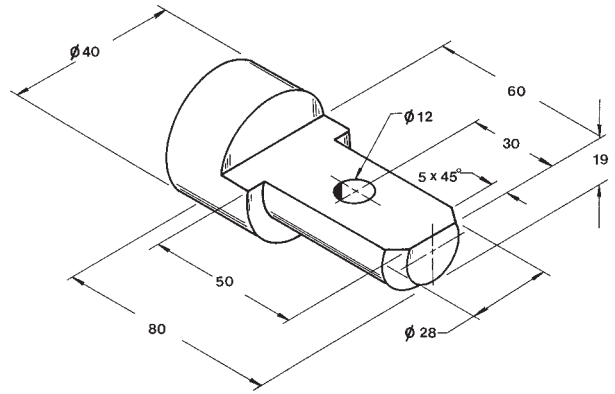


Figure P4-20
MILLIMETERS

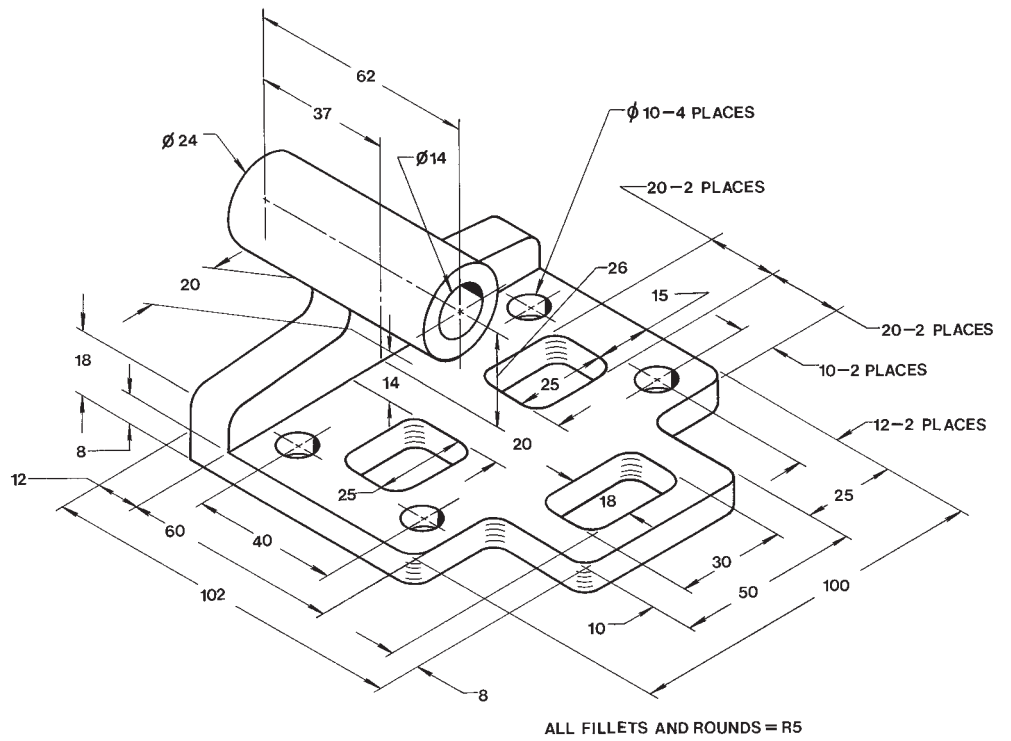


Figure P4-23
MILLIMETERS

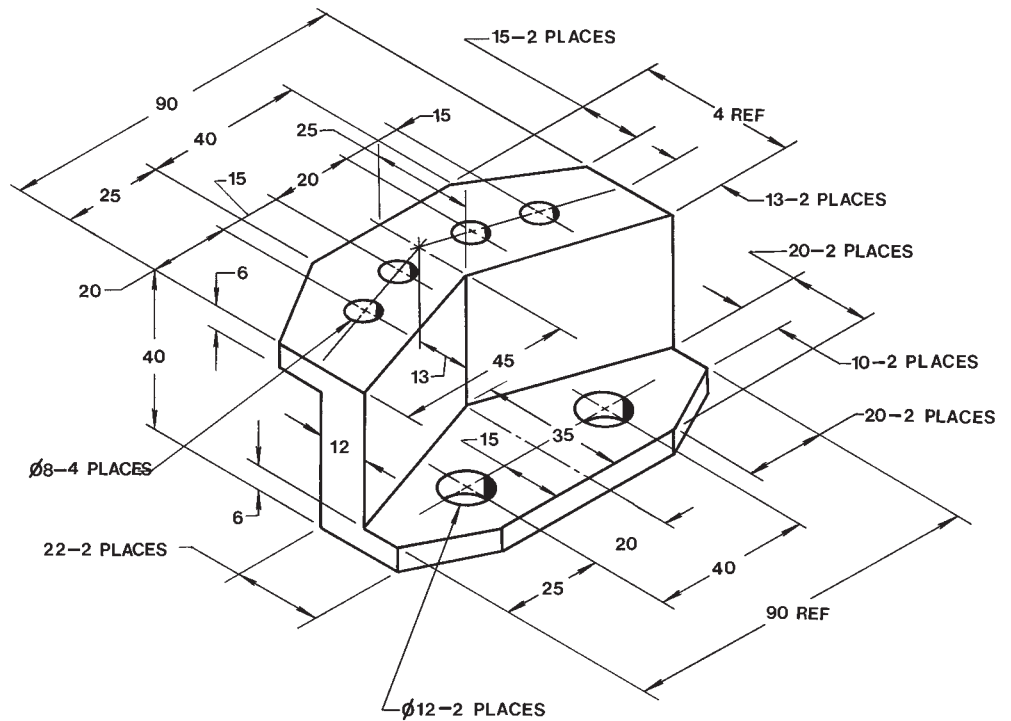


Figure P4-24
MILLIMETERS

Project 4-2

Draw at least two orthographic views and one auxiliary view of each of the objects shown in Figures P4-25 through P4-36.

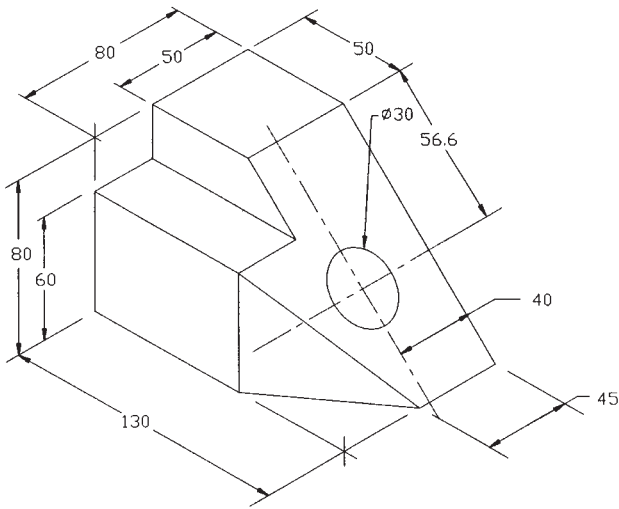


Figure P4-25
MILLIMETERS

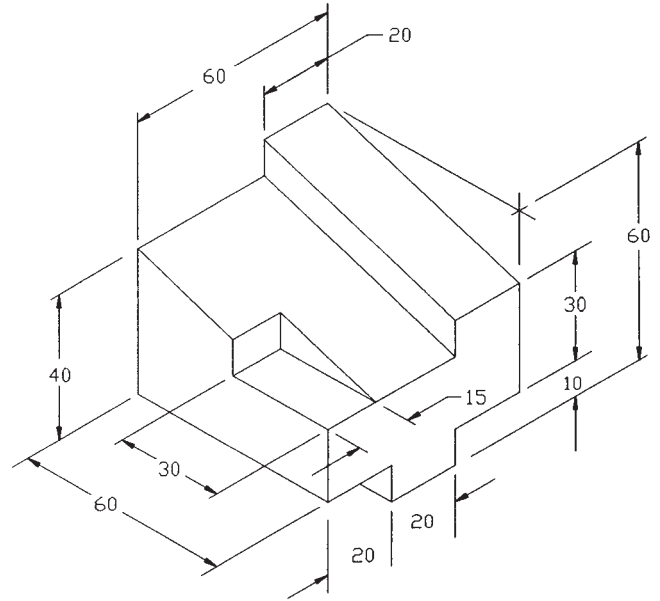


Figure P4-26
MILLIMETERS

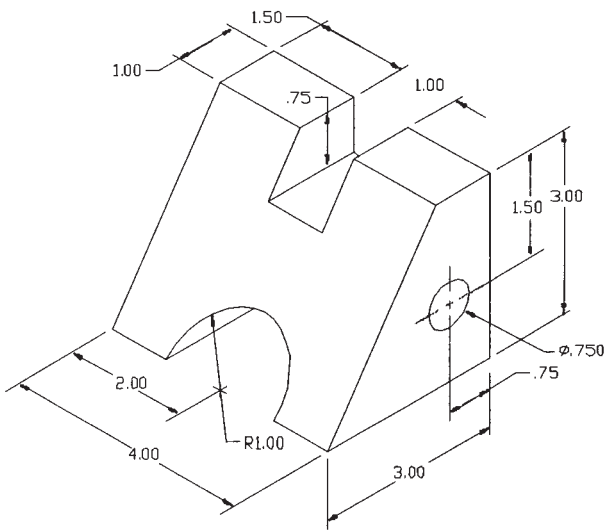


Figure P4-27
INCHES

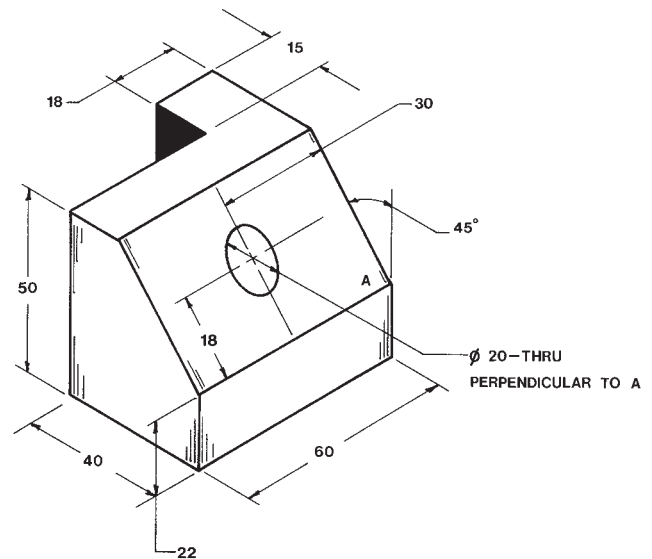


Figure P4-28
MILLIMETERS

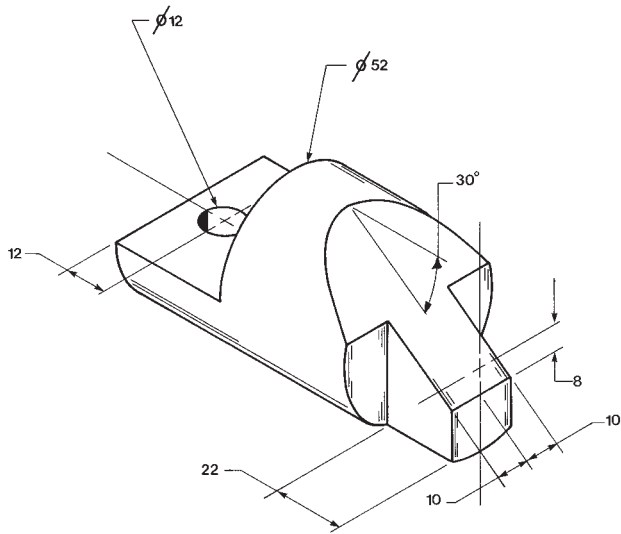


Figure P4-29
MILLIMETERS

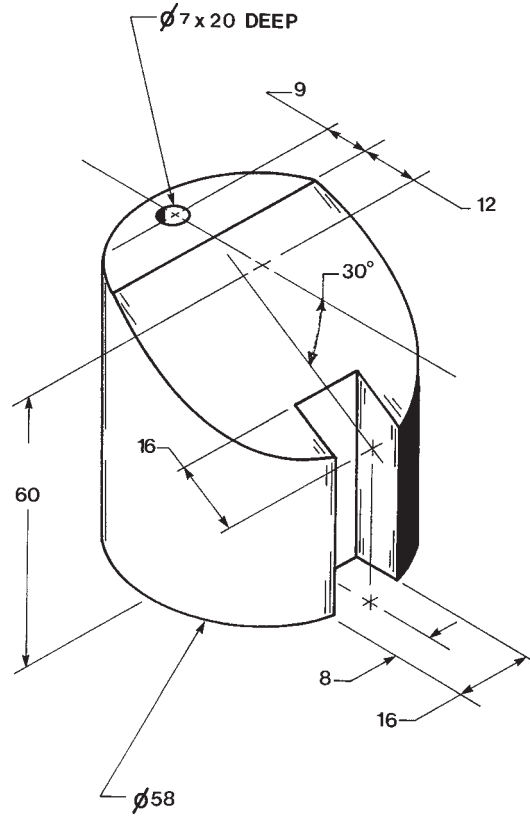


Figure P4-30
MILLIMETERS

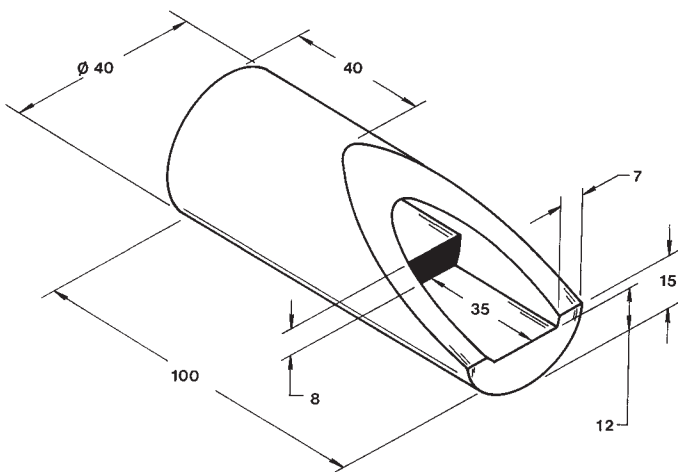


Figure P4-31
MILLIMETERS

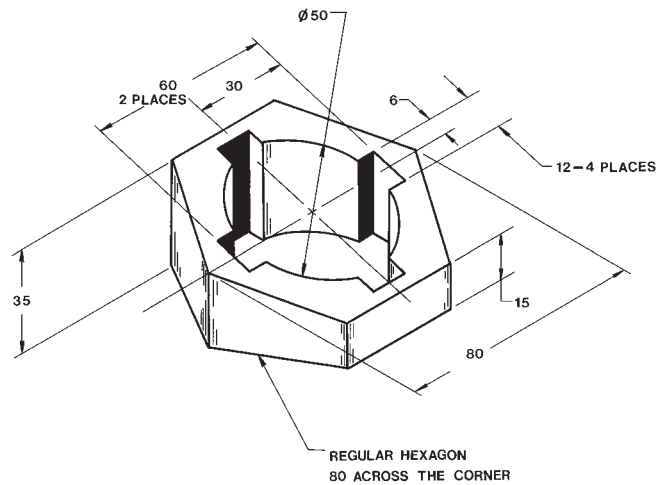


Figure P4-32
MILLIMETERS

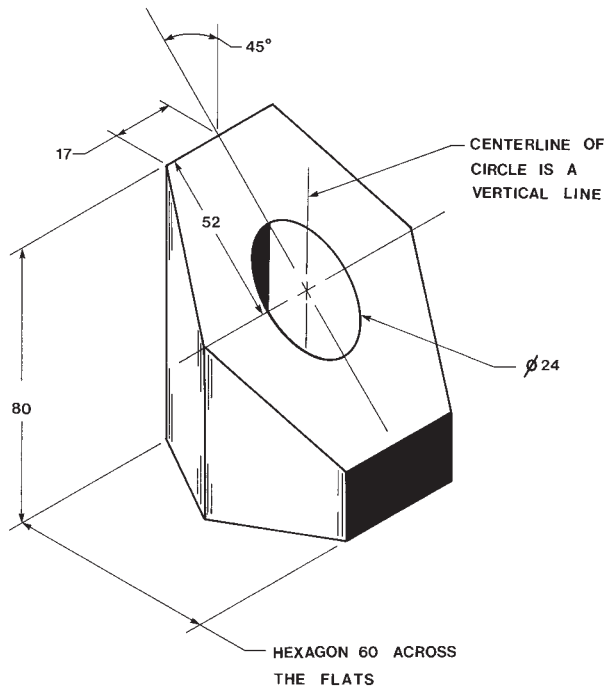


Figure P4-33
MILLIMETERS

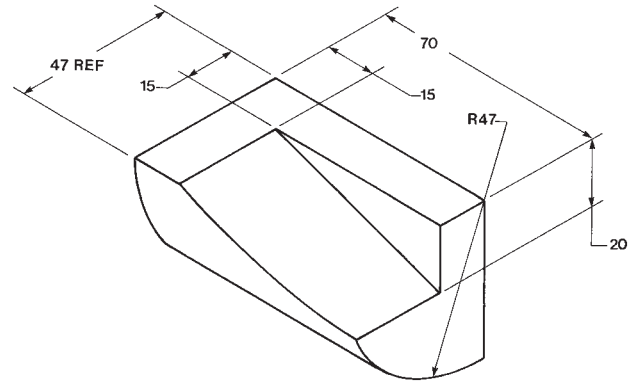


Figure P4-34
MILLIMETERS

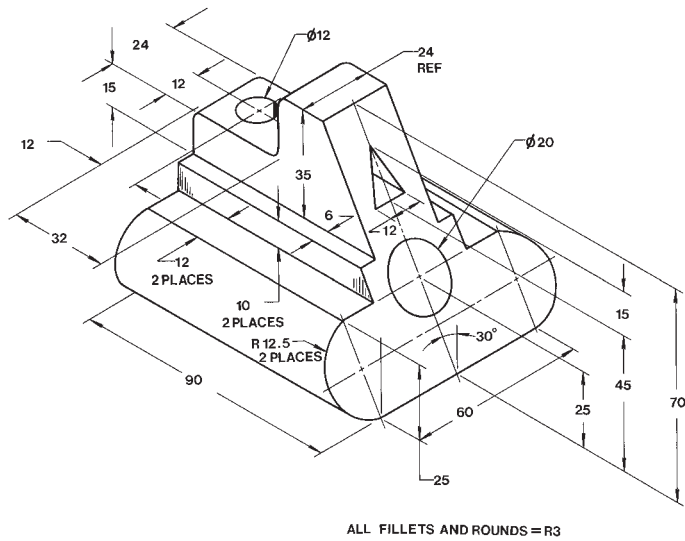


Figure P4-35
INCHES

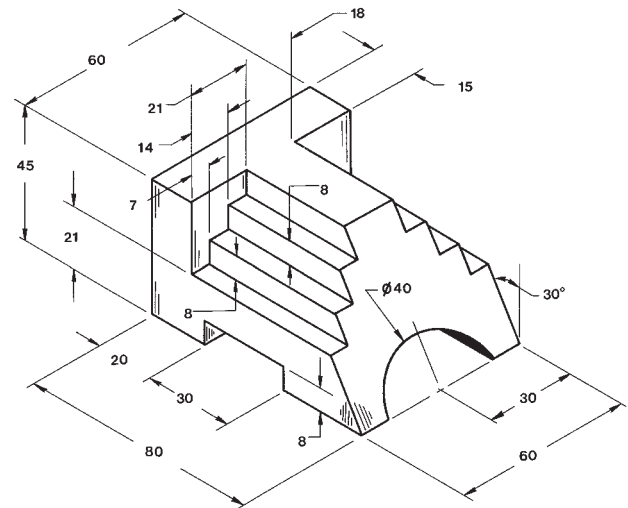


Figure P4-36
MILLIMETERS

Project 4-3

Define the true shape of the oblique surfaces in each of the objects shown in Figures P4-37 through P4-40.

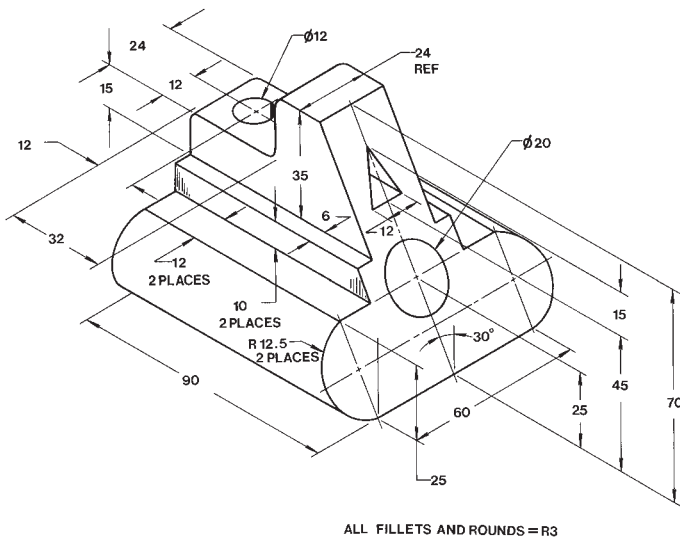


Figure P4-37
INCHES

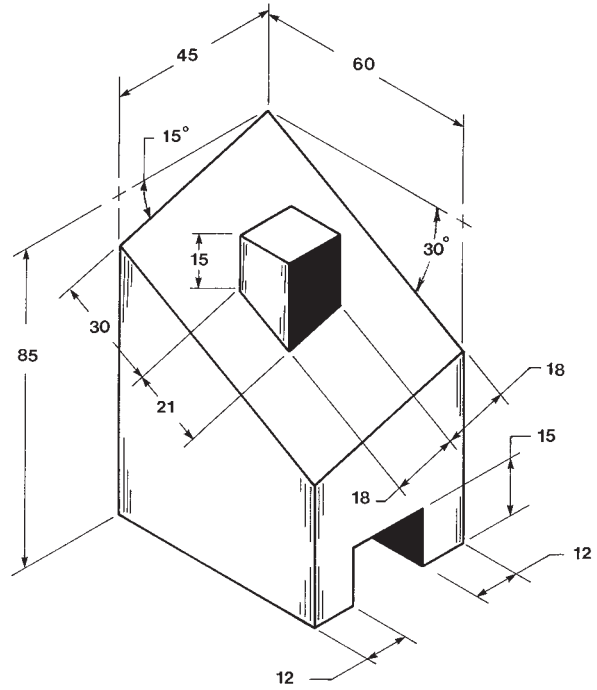


Figure P4-38
MILLIMETERS

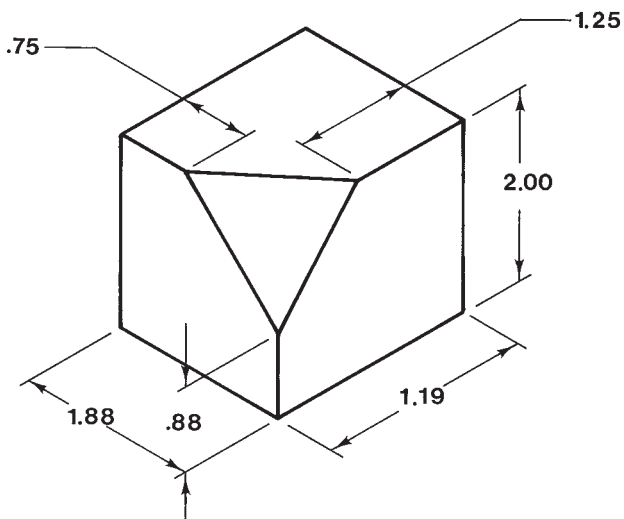


Figure P4-39
INCHES

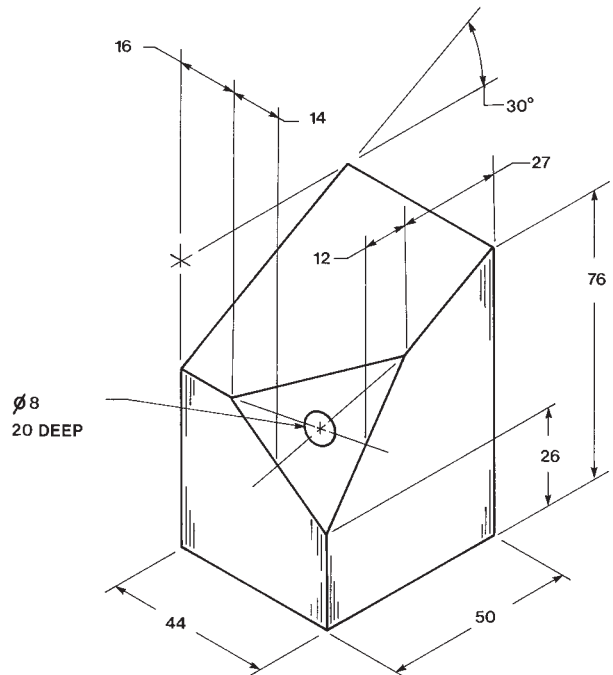


Figure P4-40
MILLIMETERS

Project 4-5

Draw at least one orthographic view and the indicated section view for each object shown in Figures P4-45 through P4-50.

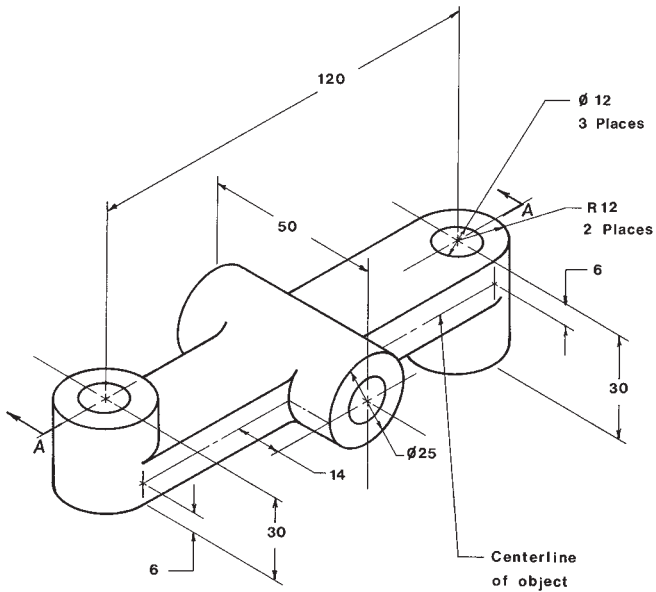


Figure P4-45
MILLIMETERS

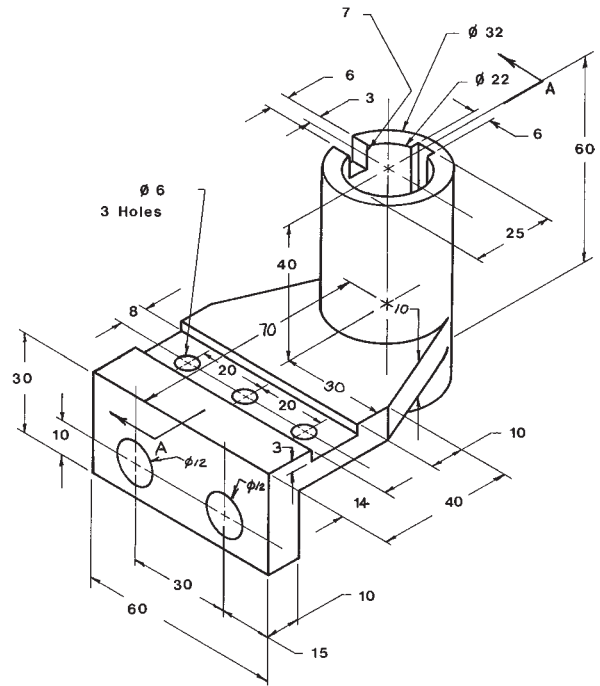


Figure P4-46
MILLIMETERS

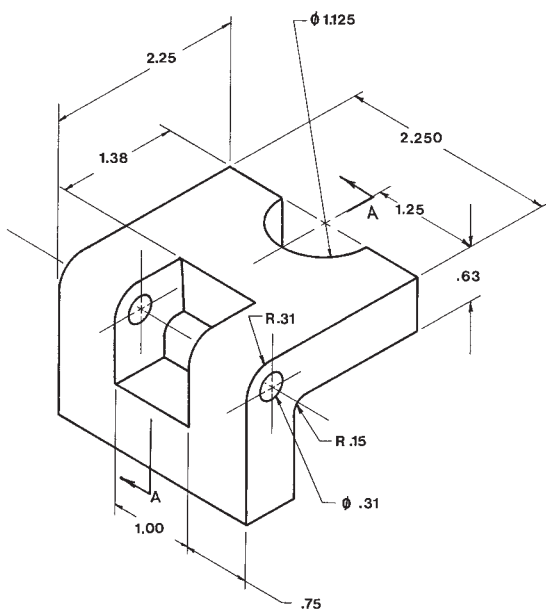


Figure P4-47
INCHES

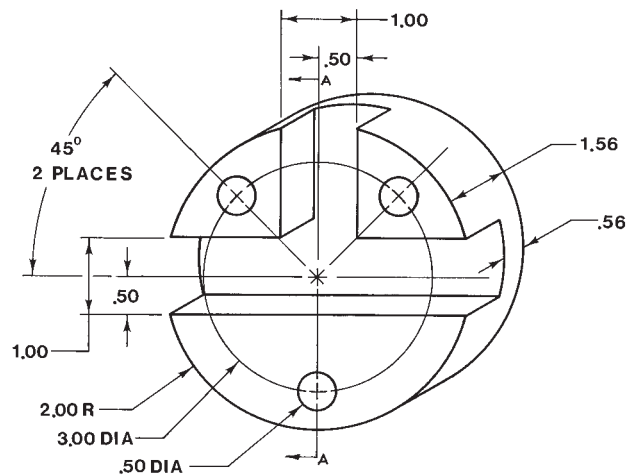


Figure P4-48
INCHES

Project 4-6

Given the orthographic views in Figures P4-51 and P4-52, draw a model of each, then draw the given orthographic views and the appropriate section views.

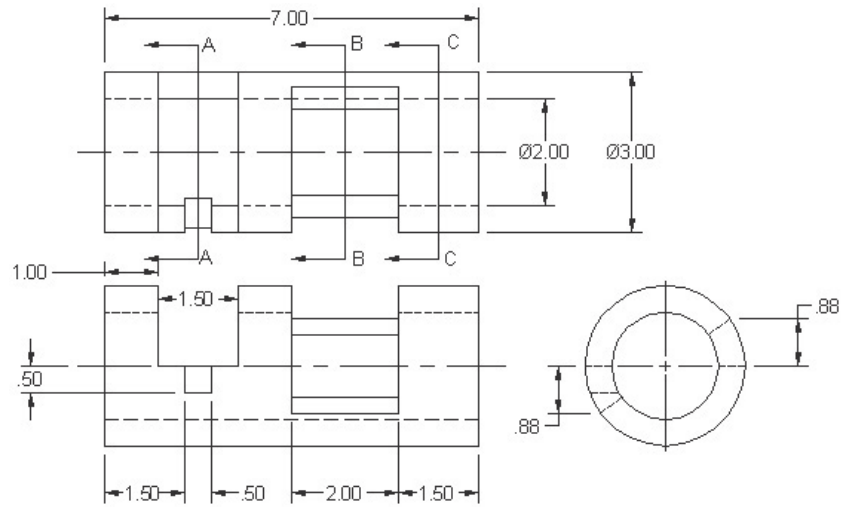


Figure P4-51

INCHES

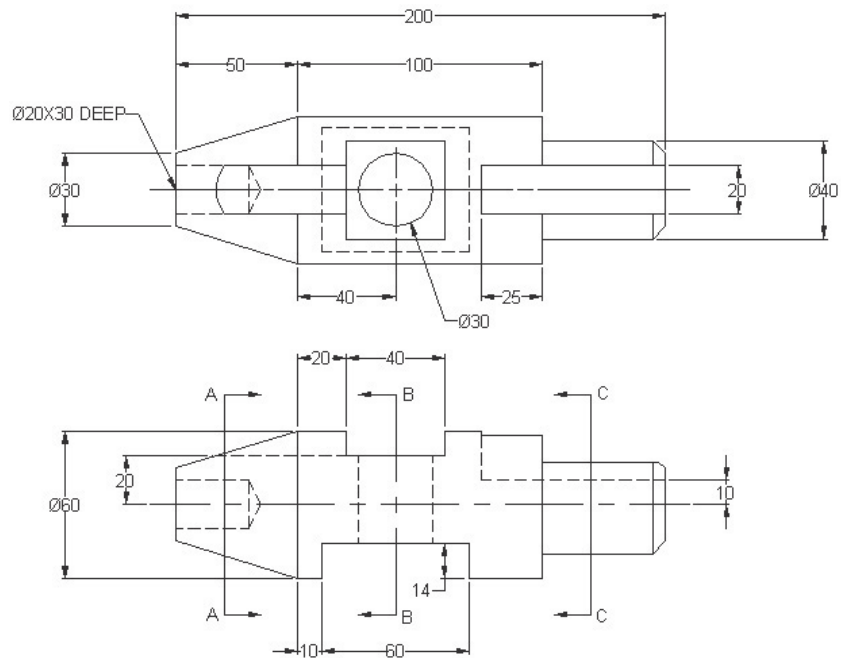


Figure P4-52

MILLIMETERS

Project 4-7

Draw a 3D model and a set of multiviews for each object shown in Figures P4-53 through P4-60.

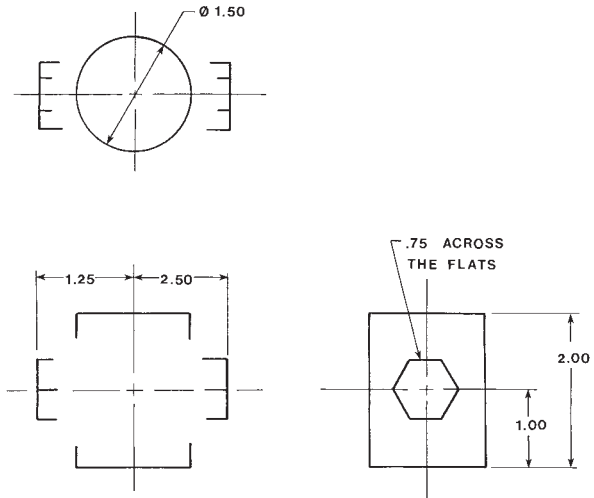


Figure P4-53
INCHES

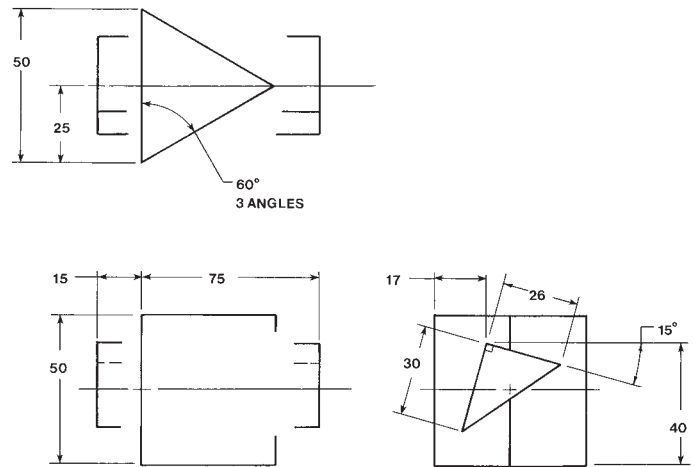


Figure P4-54
MILLIMETERS

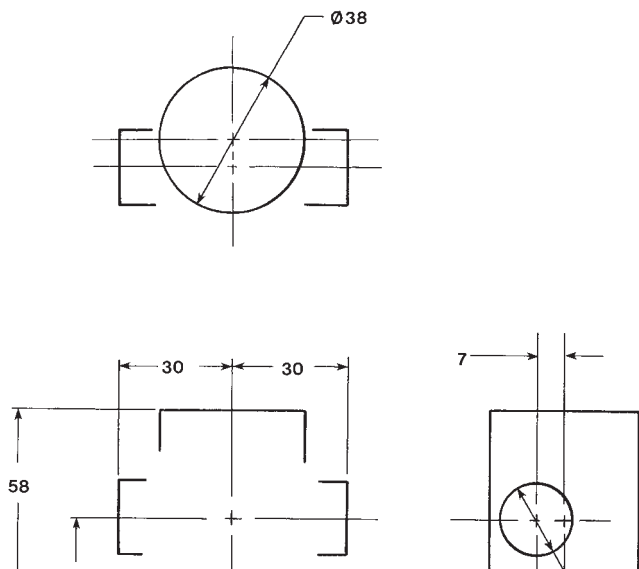


Figure P4-55
MILLIMETERS

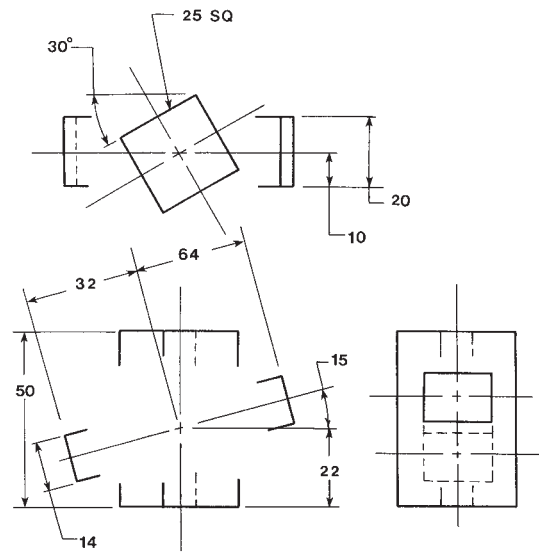


Figure P4-56
MILLIMETERS

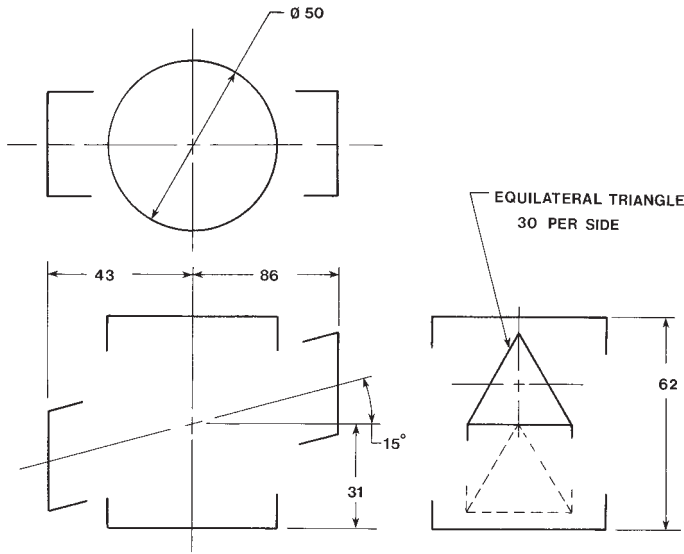


Figure P4-57
MILLIMETERS

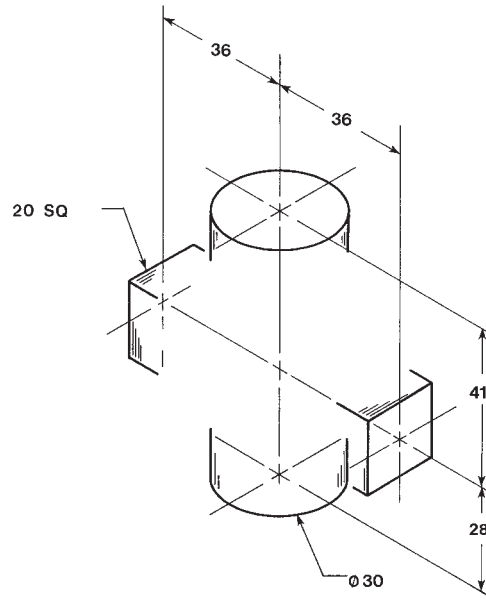


Figure P4-58
MILLIMETERS

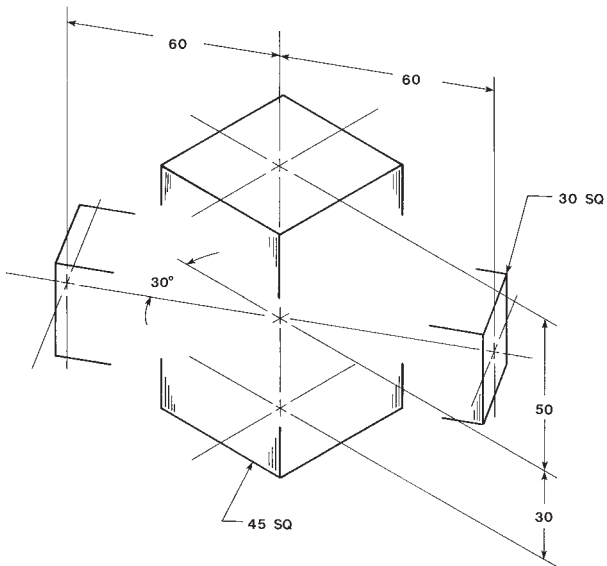


Figure P4-59
MILLIMETERS

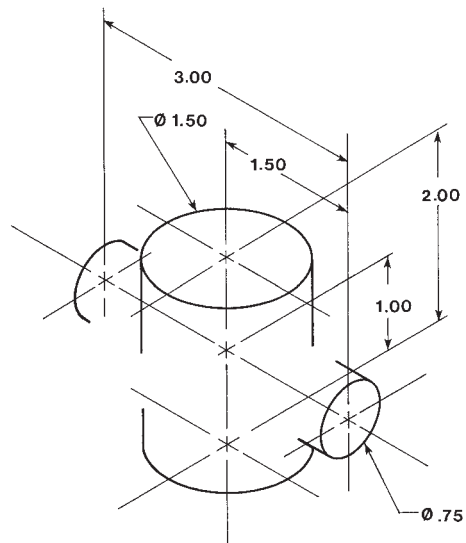


Figure P4-60
INCHES

Project 4-8

Figures P4-61 through P4-66 are orthographic views. Draw 3D models from the given views. The hole pattern defined in Figure P4-61 also applies to Figure P4-62.

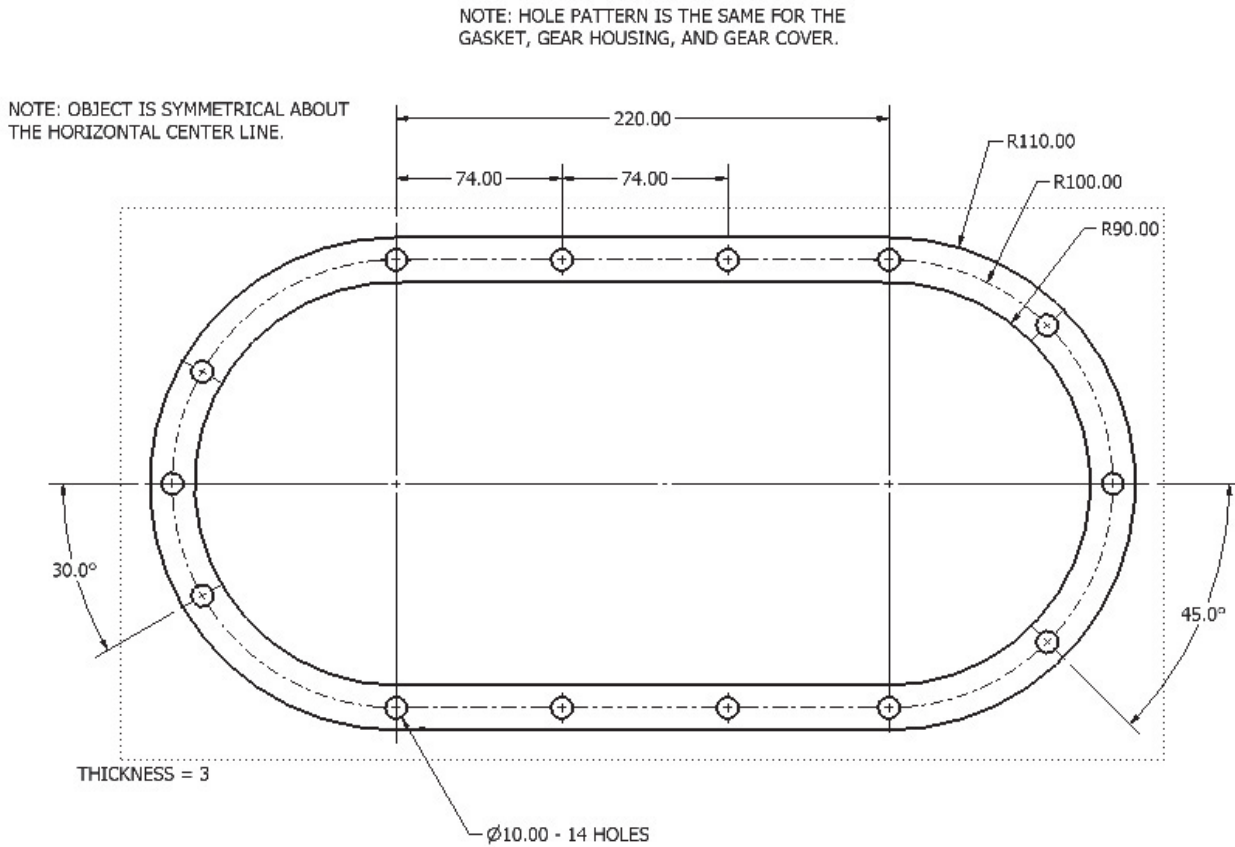


Figure P4-61
MILLIMETERS

Figure P4-62
MILLIMETERS

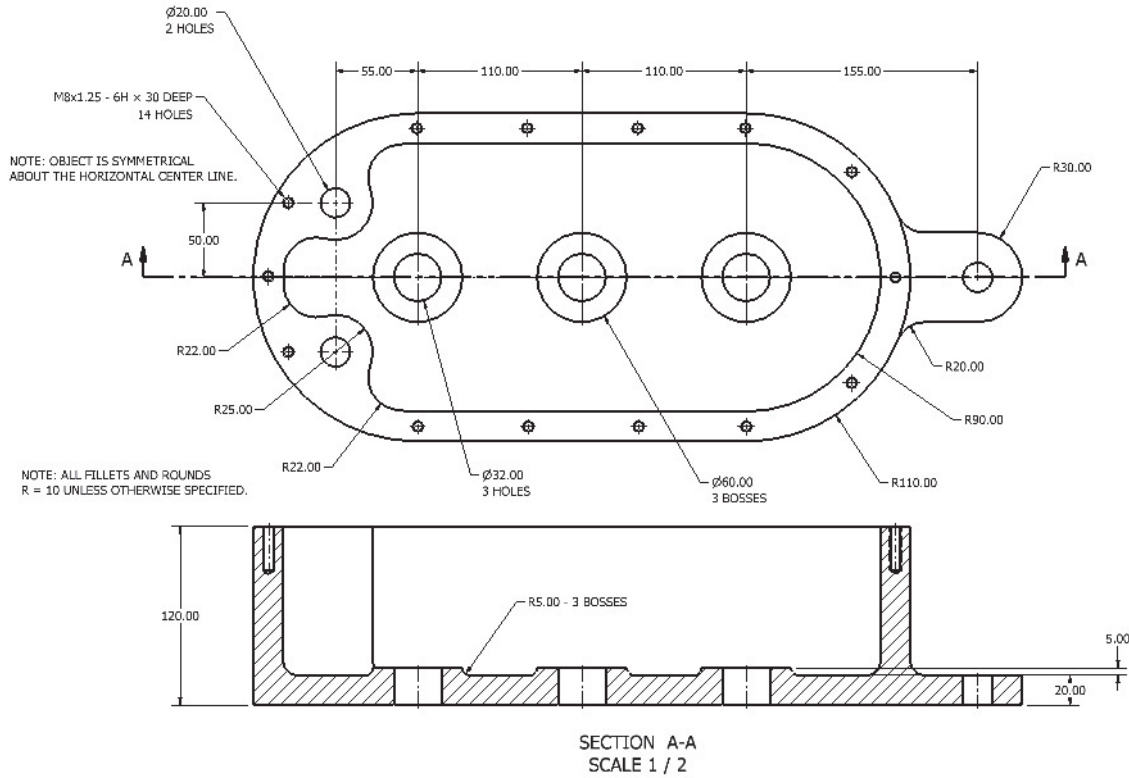


Figure P4-63
INCHES

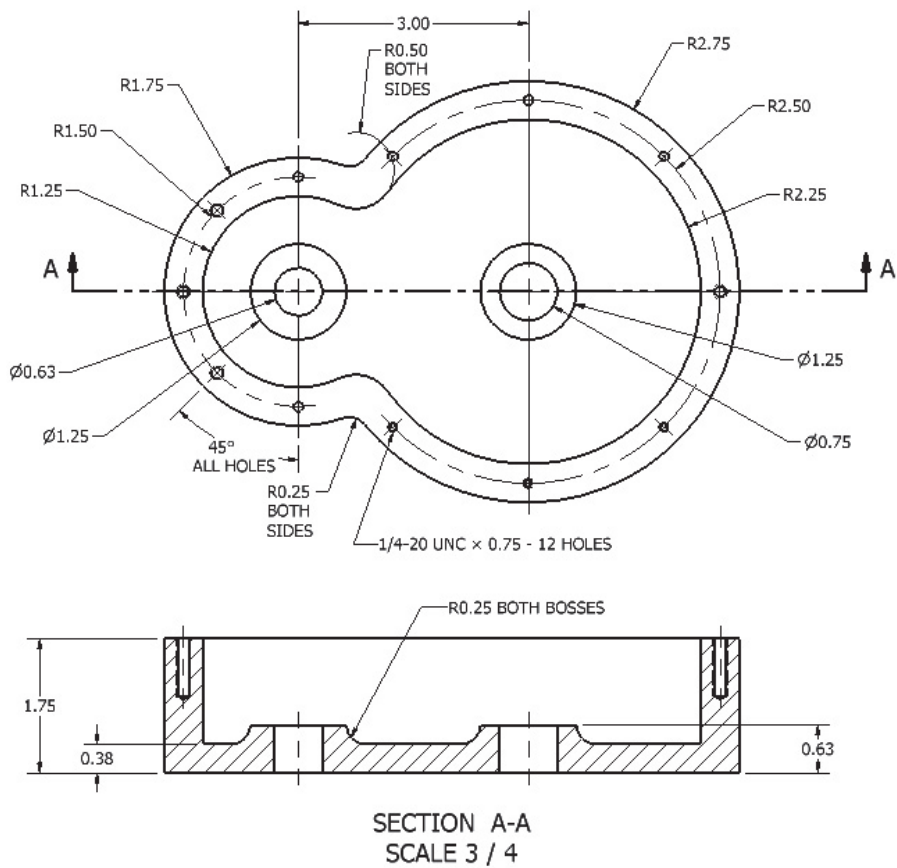


Figure P4-64
INCHES

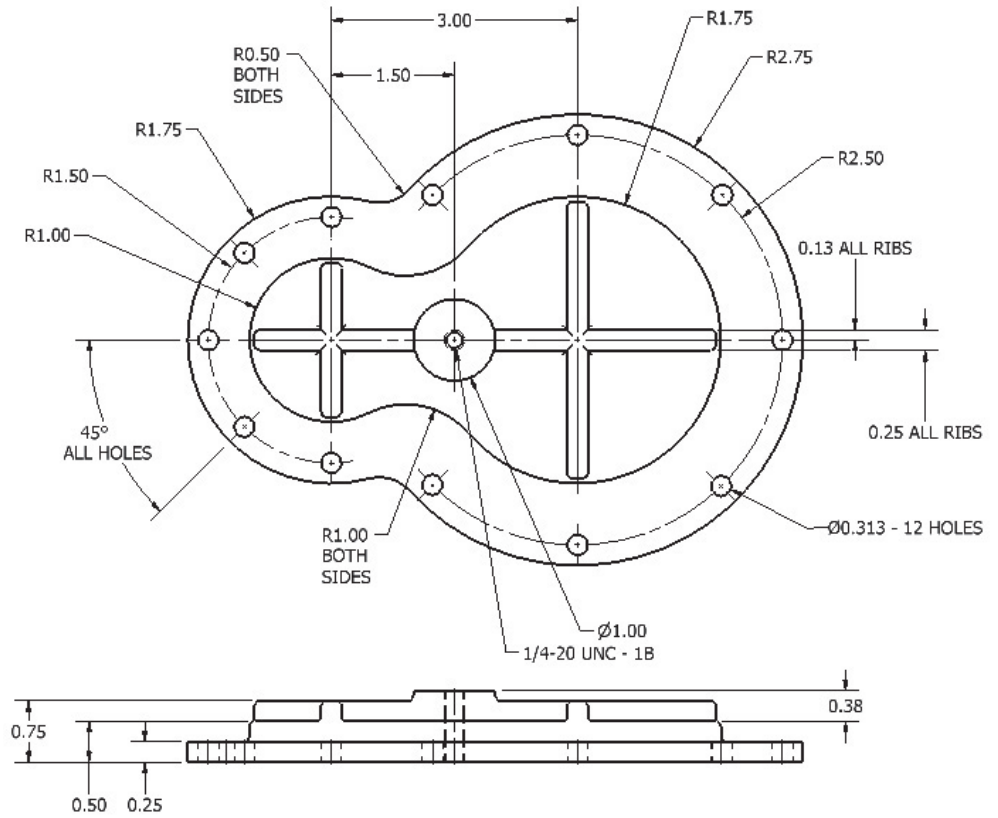
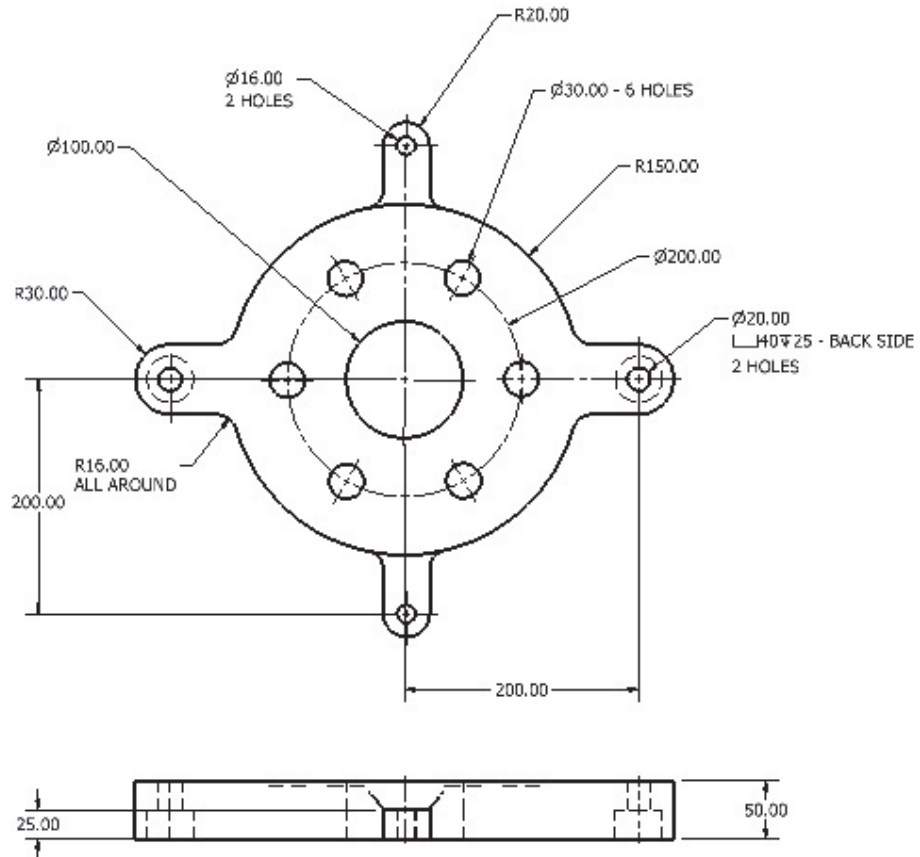


Figure P4-65
MILLIMETERS



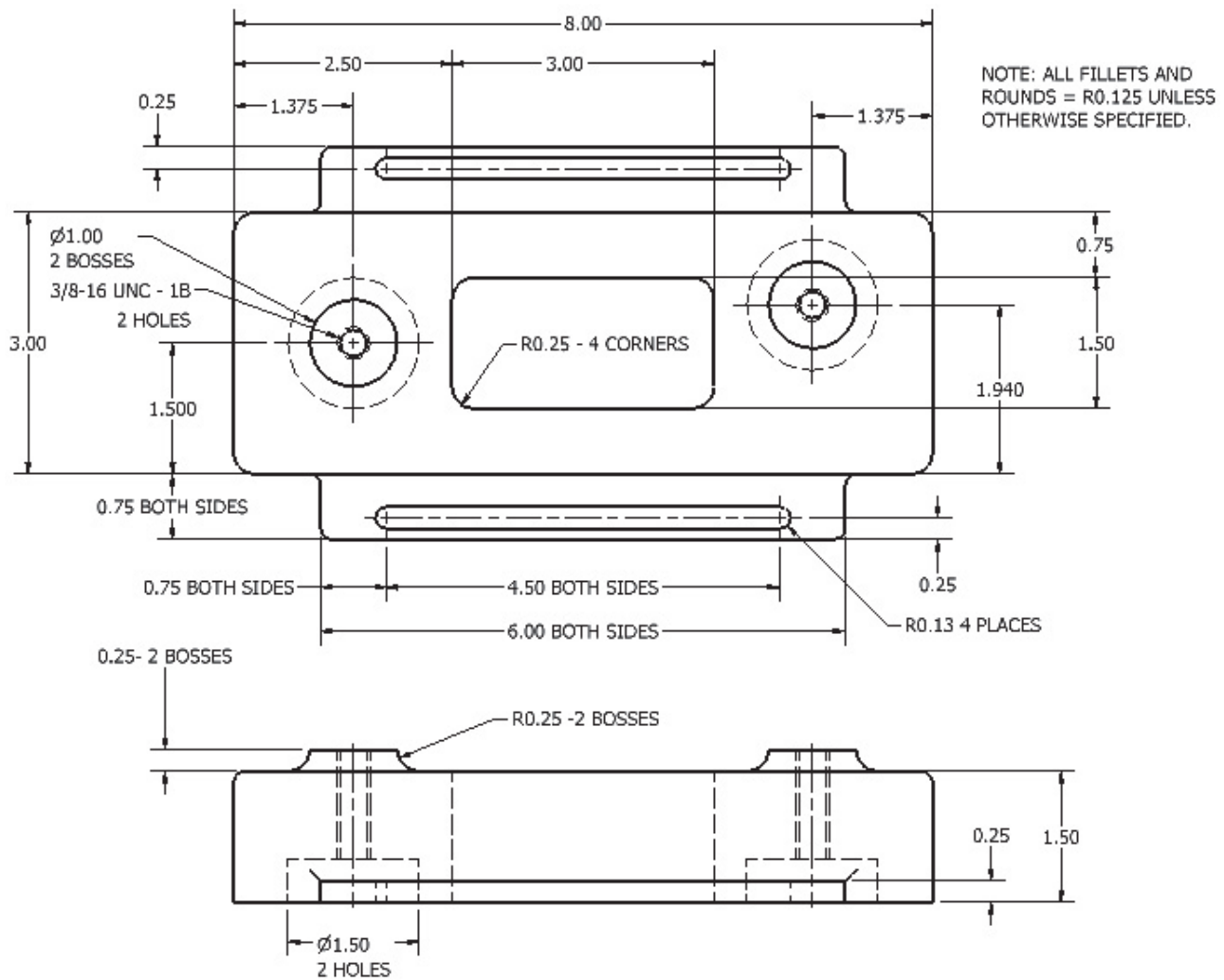


Figure P4-66
INCHES

Project 4-9

Figures P4-67 through P4-71 are presented using first-angle projection and ISO conventions.

- Create a solid model from the given orthographic views.
- Draw front, top, and right-side orthographic views of the objects using third-angle projection and ANSI conventions.

Figure P4-67
MILLIMETERS

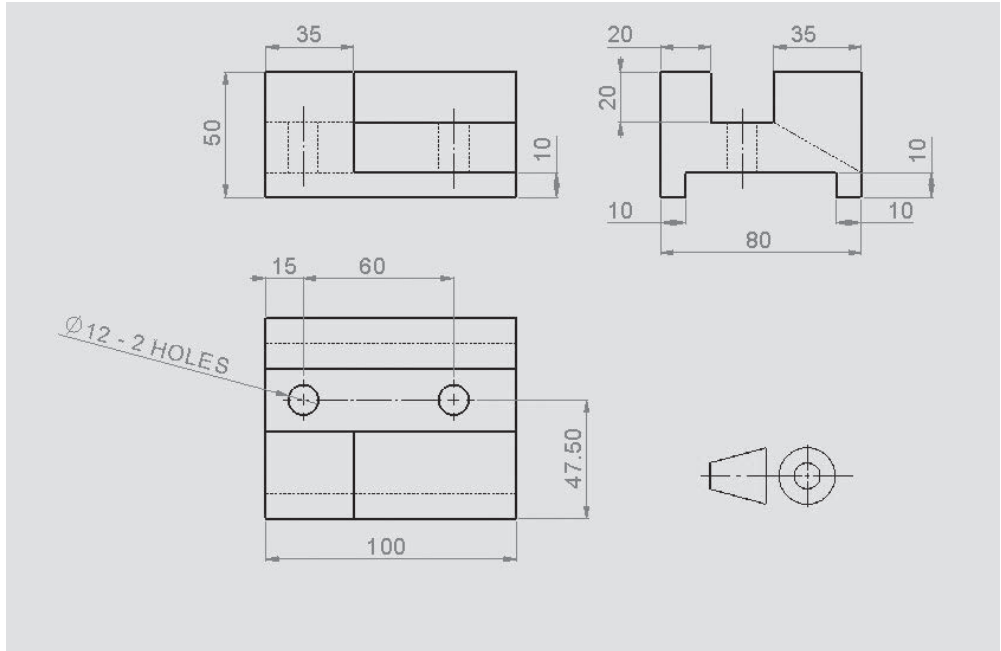


Figure P4-68
MILLIMETERS

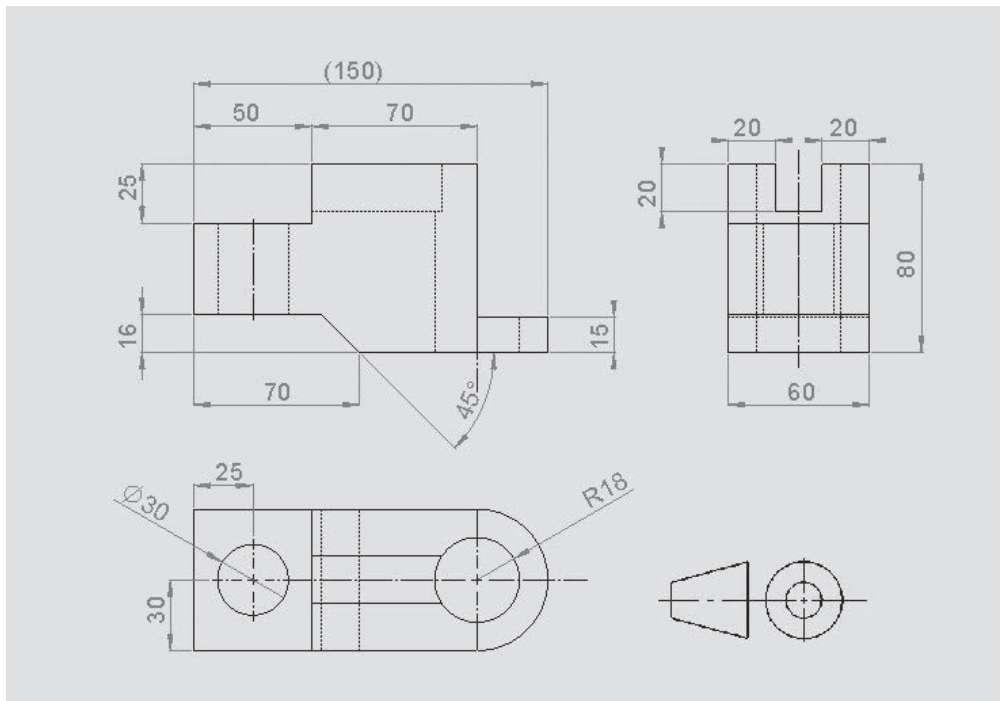


Figure P4-69
MILLIMETERS

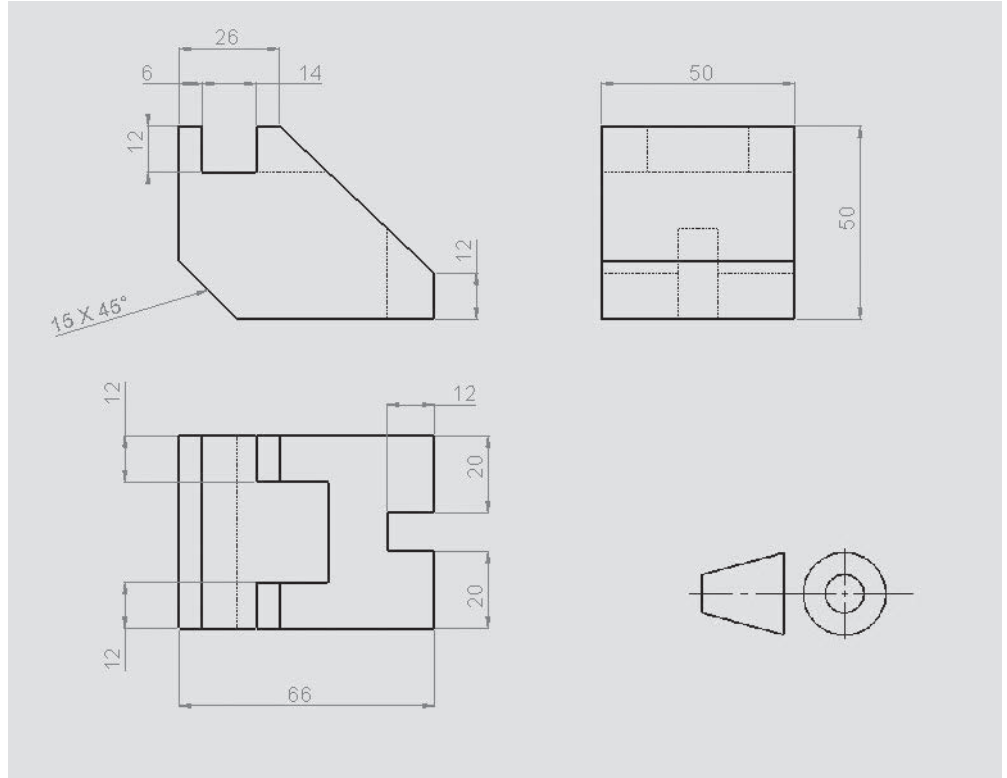


Figure P4-70
MILLIMETERS

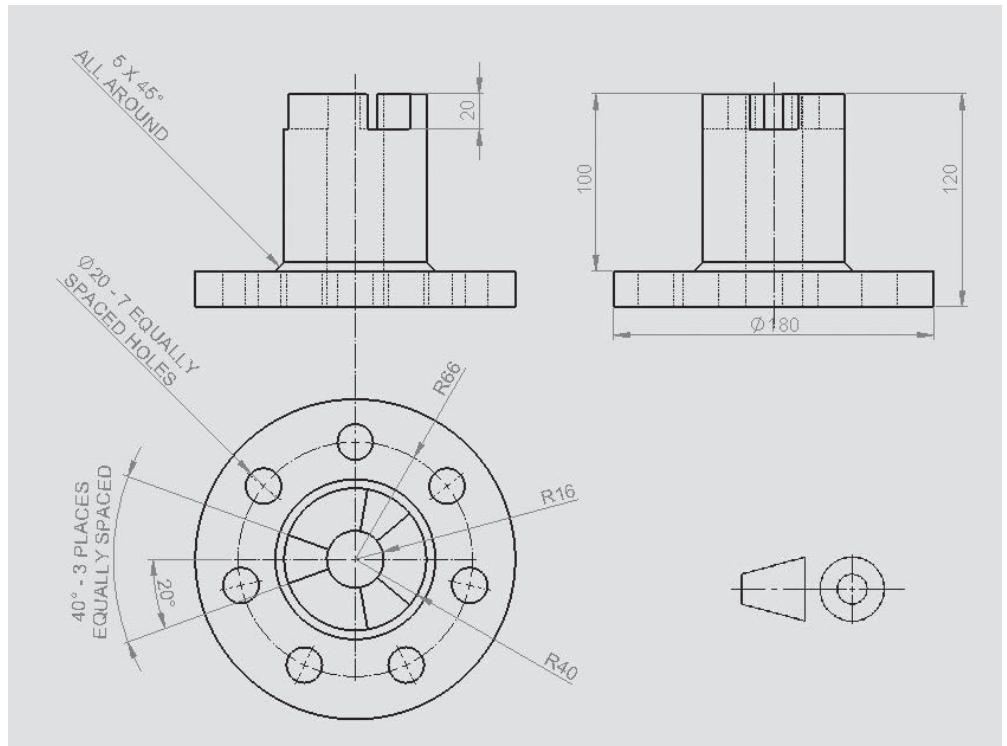
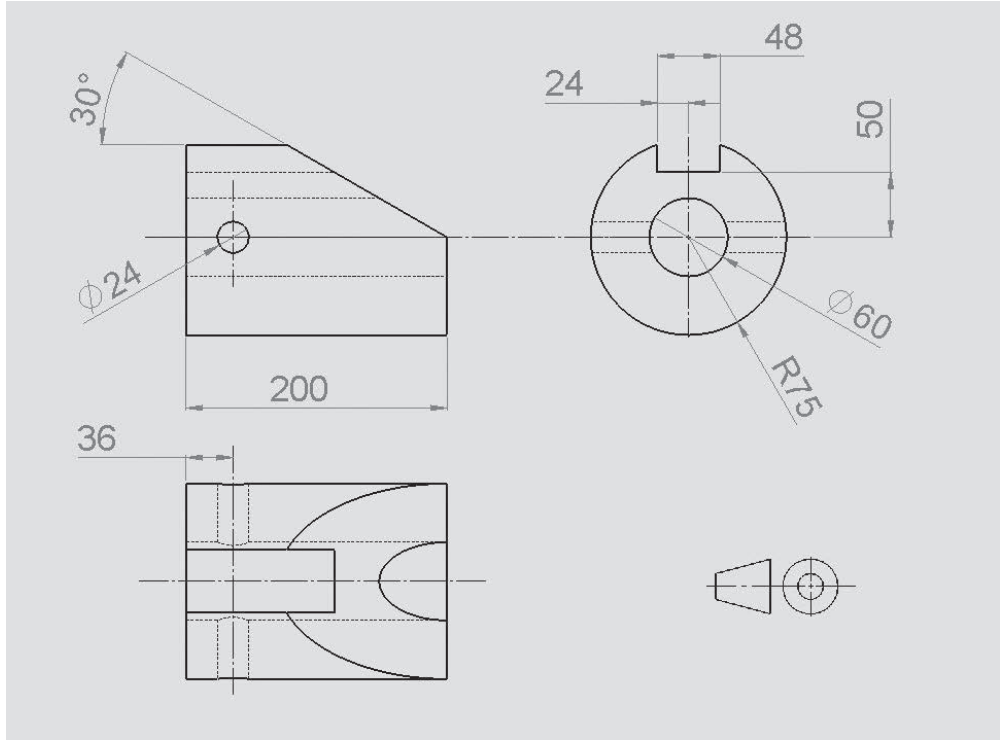


Figure P4-71
MILLIMETERS



Index

0°, defined, 31

A

Abbreviations, in dimensioning, 427

Addendum, in gears, 698, 699

Aligned dimensions, 52, 403–404

Aligned section views, 185

All-around fillet welds, 789–790

American National Standards Institute (ANSI), 167

on dimensions, 389, 390, 395

on orthographic views, 190–191

on threads, 312, 313, 319

American Society of Mechanical Engineers (ASME), 190

American Standard

clearance locational fits, 824

interference locational fits, 827

running and sliding fits (hole basis), 825

transition locational fits, 826

Angled work planes, 129–132

Angle option, in Constrain tool, 231–232

Angular dimensions, 391, 413

Angularity tolerances, 509

Angular shapes, drawing, 19–20

Angular tolerances, 463–465

Animate tool, 238

Animating the LINKS, 272

Annotate panel, 177–178, 393

ANSI. *See* American National Standards Institute (ANSI)

Applications Option dialog box, 3, 4, 179

Arcs, sketching, 36–38

ASME (American Society of Mechanical Engineers), 190

Assemble panel bar, 223

Assembly drawings, 221–287

aligning, 278–279

Animate tool for, 238

Balloon tool for, 241–243

bottom-up assemblies, 221

Constrain tool for, 227–233

copying components in, 266–267, 286–287

creating and assembling parts, 261–263, 269–271

CROSSLINK, 268–269, 278

Degrees of Freedom option and, 224–226

drawing sheets for, 253–255

editing, 280–284

Free Move tool, 226

isometric, 238–241

LINKs, 264–267, 270–272, 275–277

mirroring components in, 285–286

numbers in, 241–243

Parts List tool for, 243–245

patterning components in, 284–285

plate, 272–275

presentation drawings, 235–237, 279–280

Rotate Component tool for, 227

saving, 234

sketch plane changes in, 261

springs in, 582–587

starting, 222–224, 260–261

subassemblies, 249–252

title blocks for, 246–248, 255–258

top-down assemblies, 221, 260–280

weldments, 3

work points and axes in, 263–264

Auxiliary views, 187–189

B

Backgrounds

gradient backgrounds, 29

grid backgrounds, 29

screen, changing color of, 3, 179–180

Backlash, defined, 698

Ball bearings, 671, 677–681

Balloon tool, 241–243

Baseline dimensions, 418–419, 468–469

Bearings, 671–685

ball, 671, 677–681

interface, 675

plain, 671, 672–676

thrust, 671, 681–685

Belleville springs, 580–582

Bend radii, 751–753

Bevel gears, 698, 718–725

Bilateral tolerances, 455–456

Bisector tool, for centerlines, 178, 183

Blind holes, 98, 317–319, 321–322, 324–325

Bolt circles, 57

Bolts, 322, 323, 325–332

Bottom-up assemblies, 221

Break views, 186–187

Bubble numbers, 242

Bushings. *See* Plain bearings

C

Callouts, in threads, 312–314

Cams, 799–814

defined, 799

displacement diagrams and, 799, 800

drawing, 801–803, 806–809

followers and, 809–814

hole additions to, 803–805

Center distance, of gears, 698

Centerline Bisector tool, 178, 183

Centerlines

- adding, 176–178
- dimensioning, 430
- editing, 179
- for holes, 394–395
- symbols, 427–428

Center Point Arc tool, 38, 51

Chain dimensions, 467–468

Chamfers

- defined, 46, 425
- dimensioning, 425
- on shafts, 606–610
- sketching, 46–48

Chamfer tool, 104–105

Change orders (COs), 258

Circle Center Point tool, 33–34

Circles

- location and size changes, 68–70
- patterns of, 57–58, 113–114
- sketching, 33–35, 142

Circle Tangent tool, 35

Circle tool, 12, 17, 34–35

Circularity tolerances, 495

Circular Pattern dialog box, 57

Circular Pattern tool, 113–114

Circular pitch, 698

Circular thickness, 698

Clearance, of gears, 699

Clearance fits, 474–475

Clearance locational fits, 824

Closed splines, 39

Coil tool, 146–148, 563–565, 568, 572, 579

Collars, 638–643

Columns, for parts lists, 245–246

Compound lines, 171–172

Compression springs, 563–570

- coil ends, 565–570
- drawing, with coil tool, 563–565

Constrain tool, 227–233

- Angle option, 231–232
- Flush option, 227–228
- Insert option, 233
- Mate option, 227–228
- Offset option, 229
- overview, 227
- positioning objects with, 229–230
- Tangent option, 232

Constraints, 52–55

Content Center, 311, 333, 339–340, 342, 345, 611, 643, 646

Copy Component tool, 286–287

Copy tool, 62–63, 266

Corners, in sheet metal drawings, 756–757

COs (change orders), 258

Counterbores, 336–339, 411–412

Countersunk holes, 333–337, 413

Create In-Place Component dialog box, 261, 262, 264

Create New File dialog box, 2, 27–28, 235

Crest, of threads, 312

CROSSLINK, 268–269, 278

Cuts, in sheet metal drawings, 757–759

Cutting planes, 181, 184

Cylinders, 128, 139

- drawing a work axis at center of, 139

Cylindrical fits

- hole basis, 828
- shaft basis, 830

Cylindricity tolerances, 495–496

D

Datums, 498, 504–505

Datum surfaces, 480

Dedendum, defined, 698

Default planes and axes, 123–125

Degrees of Freedom option, 224–226

Design tab, 648–651

Detail views, 185–186

Deviation tolerances, 455

Dialog boxes. See specific dialog boxes

Diameter dimensions, 404–406

Diametral pitch, 697, 699

Dimension lines, 390

Dimensions and dimensioning, 389–435

- aligned, 52, 403–404
- angular, 391, 413
- baseline, 418–419, 468–469
- centerlines, 430
- chain, 467–468
- chamfers, 425
- drawing, 389, 392–393
- drawing scales and, 399–400
- editing, 8–9
- errors to avoid, 391–392
- fillets and rounds, 422–423
- holes and hole tables, 397–399, 406–407, 411–412, 419–420
- horizontal, 394–395
- irregular surfaces, 423–424
- keys and keyseats, 426–427
- knurls, 426
- linear, 391, 472–473
- locating, 421–422
- model, 389, 393
- ordinate, 415–417
- orthographic views, 393, 429–430
- overall, 395
- to points, 428–429
- polar, 424–425
- radius and diameter, 404–406
- rectangular, 470
- reference, 408

section views, 429
symbols and abbreviations, 409–411, 427–428
terminology and conventions for, 390–392
text, 396–397, 406
3D, 430–431
types of, 389
units, 400–402
vertical, 395–396

Dimension tool, 34, 37, 49, 52, 389, 407

Disc Cam tool, 799, 801

Displacement diagrams, 800

Double dimensioning, 413, 466–467

Drawing dimensions, 389, 392–393

Drawing layout files, 3

Drawing notes, 259

Drawing revisions, 258

Drawings. *See also* Sketches

assembly drawings, 221–287 (*See also* Assembly drawings)

sheet metal, 747–768 (*See also* Sheet metal drawings)

starting, 1–3

weldment (*See* Weldment drawings)

Drawing scales, 399–400

Drawing sheets, 253–255

Drawing View dialog box, 175, 239, 240

Drill sizes, 479

Drive Constraint dialog box, 273

E

ECOs (engineering change orders), 258–259

Edit Dimension dialog box, 8, 68, 69, 458, 459

Edit Feature tool, 120

Editing

arcs, 37

assembly drawings, 280–284

balloons, 242

centerlines, 179

dimensions, 8–9

features, 89–90, 280–282

hole dimensions, 399

parts lists, 244–245

splines, 39–40

3D modeling, 88–90, 120–123

2D sketching, 68–69

Edit Sheet dialog box, 253

Edit Sketch tool, 120

Ellipses, sketching, 40–42

Ellipse tool, 42

Engineering change orders (ECOs), 258–259

Equilateral polygon, 48

Esc key, 31

Exploded assembly drawings, 235–237

Extend tool, 66–67

Extension lines, 390

Extension springs, 570–577

External rounded shapes, 423

Extrude dialog box, 10, 12, 85, 88, 90

Extrude tool, 10, 12, 15–16, 85–87, 621

F

Face Draft tool, 105–106

Face fillets, 101–103

Face width, 698

Fasteners, 322–352

accessing, 311

bolts, 325–332

counterbores and, 336–339

fixed, 517

floating, 514–515

hole designs based on size of, 490

length and depth determinations, 324–328

nuts, 328–332, 343–345

rivets, 351–352

screws, 328–329, 332–336, 339

setscrews, 348–351, 638–641

standard specifications for, 322–323

tolerances and, 490

washers, 345–348

Feature Control Frame dialog box, 498,

500, 502

Feature editing, 89–90, 280–282

Features, defined, 90

File extensions, 3

Fillets

adding, 123

defined, 44

dimensioning, 422

face fillets, 101–103

full round fillets, 100–101

sketching, 45–46

variable fillets, 103

Fillet tool, 99–103

Fillet welds, 779–786, 789–790

First-angle projections, 191–193

Fits, and tolerances, 474–476, 478–479

Fixed condition, 488–489

Fixed fasteners, 517

Flanges, 91–93, 753–754

Flat head screws, 333–337

Flatness tolerances, 491

Flat Pattern tool, 761

Flip tool, 57

Floating condition, 487–488

Floating fasteners, 514–515

Floating objects, 473

Flush option, in Constrain tool, 227–228

Followers, 809–814

Fonts, changing, 51

Format Text dialog box, 398

Free Move tool, 226

Free Orbit tool, 20

Full round fillets, 100–101

G

Gauges, wire and sheet metal, 823

Gear ratios, 706–707

Gears, 697–731

- assemblies, 712
- bevel, 698, 718–725
- combinations of, 707–708
- direction of, 708
- drawing, 699–701
- formulas for, 699
- hub additions to, 701–706, 719–721
- with keyways, 709–712, 721–723
- meshing, 697, 708, 712, 718
- ratio between, 706–707
- spur, 698, 699–701, 709
- terminology, 697–699
- worm, 698, 726–729

Gear trains, 707–708

Geometric tolerances, 491, 496–500, 503

Geometry Text tool, 51–52

Get Started panel, 1, 2

Gradient backgrounds, 29

Grid backgrounds, 29

Groove welds, 791–792

Grounded components, 224

H

Hatch tool, 426

Height of text, changing, 51

Hexagons

- defining size of, 49
- sketching, 48–49

Hex head bolts, 325–327

Hex head screws, 329, 340

Hidden lines, 169–170

Hole-basis tolerances, 476–478, 679–689

Hole dialog box, 320, 321

Holes

- adding, 10–12, 17–19
- blind holes, 98, 317–319, 321–322, 324–325
- in cams, 803–805
- centerlines for, 394–395
- counterbores, 336–339, 411–412
- countersunk, 333–337, 413
- in cylinders, 128
- diameter changes, 121
- dimensioning, 397–399, 406–407, 411–412, 419–420
- fastener size and, 490
- in sheet metal drawings, 755–756, 760–761
- through holes, 96–97, 320–321
- tolerances and, 470–473

Hole tables, 419–420

Hole tool, 319–321

Home tool, 21

Horizontal dimensions, 394–395

Hubs, gear, 701–706, 719–721

I

Idler gears, 708

Insert option, in Constrain tool, 233

Interference fits, 474, 475

Intermittent fillet welds, 786

Internal rounded shapes, 422–423

Internal threads, 315–316

International Organization for Standardization (ISO), 167, 190, 389, 390

Irregular surface dimensioning, 423–424

ISO. *See* International Organization for Standardization (ISO)

Isometric drawings, 238–241

Isometric 3D view, 9

Isometric position, returning to, 21

Isometric views, 180–181

K

Keys, 616–622

- defined, 426
- dimensioning, 426–427
- Pratt and Whitney, 622–628
- square, 426, 617–622, 628
- Woodruff, 629–632

Keyways

- creating, 621–622, 625–628
- defined, 426
- dimensioning, 426–427
- gears with, 709–712, 721–723
- plain groove, 628
- on shafts, 616–622

Knurls, 426

L

Lay, defined, 481

Lay symbols, 485–486

Leader lines, 391

Length of models, changing, 120–121

Limits/Fits Calculator, 475–476, 479

Limit tolerances, 455, 462–463

Linear dimensions, 391, 472–473

Lines

- compound, 171–172
- defining lengths of, 31–33
- hidden, 169–170
- precedence of, 170–171

Line tool, 29–31

LINKs, 264–267, 270–272, 275–277

Locating dimensions, 421–422

Loft tool, 141–143

M

Major diameter, of threads, 312

Mate option, in Constrain tool, 227–228

Material designations, 148–149

Maximum material condition (MMC), 493, 494, 507, 514–515
Meshing gears, 697, 708, 712, 718
Minor diameter, of threads, 312
Mirror Component tool, 285–286
Mirror tool, 59–60, 111–112
MMC. *See* Maximum material condition (MMC)
Model dimensions, 389, 393
Modeling. *See* 3D modeling
Module, in gears, 698
Mouse wheel, 224, 226
Move tool, 60–62
Multiple section views, 187

N

New File dialog box, 2
Nominal sizes, 474
Normal surfaces, 168–169
Number of teeth, in gears, 698, 699
Numbers, in assembly drawings, 241–243
Nuts, 328–332, 343–345

O

Oblique surfaces, 172
Oblique work planes, 136–137
Offset option, in Constrain tool, 229
Offset section views, 184
Offset tool, 67–68, 142, 143
Offset work planes, 132–134
Open dialog box, 175, 236
Open splines, 39
Ordinate dimensions, 415–417
O-rings, 643–648
Orthographic views, 167–193
 auxiliary, 187–189
 break, 186–187
 centerlines and, 176–178
 creating, 173–176
 defined, 167
 detail, 185–186
 dimensioning, 393, 429–430
 drawing standards for, 190–191
 fundamentals of, 168–173
 isometric, 181–182
 section, 181–183, 187
 third- and first-angle projections, 191–193
Outside diameter, 698
Overall dimensions, 395
Overdimensioning, 414–415, 466–467

P

Parallelism tolerances, 508
Part files, 3
Parts List tool, 243–245
Path, creating, 146
Pattern Component tool, 284–285

Patterns
 circular, 57–58, 113–114
 Mirror tool for, 59–60
 rectangular, 55–57, 112–113
 for 2D sketching, 55–60
Perpendicularity tolerances, 498–499, 505–508
Pins, 641–643
Pitch, of threads, 312–313, 319
Pitch diameter, 697, 699
Place Component dialog box, 223
Place Constraint dialog box, 227, 228, 231–233
Place Views tool, 239
Plain bearings, 671, 672–676
Plain groove keyways, 628
Plate, in assembly drawings, 272–275
Plus and minus tolerances, 455–462
Points, dimensioning to, 428–429
Point tool, 43
Polar dimensions, 424–425
Polygons, sketching, 48–49
Positional tolerances, 500–502, 512–513
Power Transmission panel, 625–628, 648
Pratt and Whitney keys, 622–628
Preferred clearance fits
 cylindrical fits (hole basis), 828
 cylindrical fits (shaft basis), 830
Preferred pitches, 698
Preferred transition and interference fits
 hole basis, 829
 shaft basis, 831
Presentation drawings, 235–237, 279–280
Presentation files, 3
Pressure angles, 699
Profile tolerances, 509–510
Punch tool, 762–768

R

Radius dimensions, 404–406
Rectangles
 patterns of, 55–57, 112–113
 sizing, 6–8
 sketching, 4–6, 43–44
Rectangular dimensions, 470
Rectangular Pattern dialog box, 57
Rectangular Pattern tool, 112–113
Reference dimensions, 408
Regardless of feature size (RFS) application, 493, 494, 507
Release blocks, 255
Reliefs, in sheet metal drawings, 755
Restoring work planes, 129
Retaining rings, 611–616
Revision blocks, 256–258
Revolve tool, 94–96
RFS. *See* Regardless of feature size (RFS) application
Ribs (webs), 139–141

Rivets, 351–352
Root, of threads, 312
Root diameter, 698
Rotate Component tool, 226, 227
Rotate tool, 64–65
Rotating objects, 20–21
Roughness, defined, 481
Rounded surfaces, 172–173
Rounds, dimensioning, 422–423
Running and sliding fits (hole basis), 825
Runout tolerances, 510–512

S

Save As command, 12
Screen background, changing color of, 3, 179–180
Screws, 328–329, 332–336, 339, 340–341
Section views
 aligned, 185
 defined, 181
 dimensioning, 429
 drawing, 182–183
 multiple, 187
 offset, 184
Select Assembly dialog box, 236
Setscrews, 348–351, 638–641
Shaft-basis tolerances, 476–478, 679–681
Shafts, 605–651
 collars and, 638–643
 Design tab for, 648–651
 interface, 675
 keys and, 616–622
 o-rings and, 643–648
 retaining rings and, 611–616
 with splines, 632–638
 uniform shafts with chamfered ends, 606–610
Shaft tolerances, 672–673
Sheet metal drawings, 747–768
 bend radii and, 751–753
 corners in, 756–757
 creating, 747–749
 cuts in, 757–759
 flanges and, 753–754
 Flat Pattern tool for, 761
 holes in, 755–756, 760–761
 Punch tool for, 762–768
 reliefs and, 755
 tabs and, 754–755
 thickness added to, 749–751
Sheet metal gauges, 823
Shell tool, 107–108
Simple holes, 96
Sketches. See also Drawings; 2D sketching
 creating, 4–6, 146–148
 defined, 90
 editing, 88–89, 280–284
Sketch panel, 27–29, 621
Sketch planes, 114–119, 261

Slanted surfaces, 171
Sleeve bearings. See Plain bearings
Slots, 422
Solid modeling. See 3D modeling
Splines
 defined, 39
 editing, 39–40
 shafts with, 632–638
 sketching, 39
Split tool, 109–110
Springs, 563–604
 in assembly drawings, 582–587
 Belleville, 580–582
 compression, 563–582
 extension, 570–577
 torsion, 577–580
Spur gears, 698, 699–701, 709
Square keys, 426, 617–622, 628
Squares
 projecting, 143
 sketching, 142
Standard tolerances, 465–466
Straightness tolerances, 492–495, 499–500
Style and Standard Editor dialog box, 396, 403, 460, 465
Subassemblies, 249–252
Supports
 for bevel gears, 724–725
 for worm gears, 728–729
Surface finishes, 480–486
Surface texture, 480
Sweep tool, 144–146
Symbols
 datum, 505
 dimensioning, 409–411, 427–428
 surface control, 482–484
 weldment drawings, 787–789
Symbols panel, 177, 178
Symmetric tolerances, 456

T

Tabs, in sheet metal drawings, 754–755
Tangent Arc tool, 37
Tangent option, in Constrain tool, 232
Tangent work planes, 127–128
Tapering, 87–90
T-brackets, 784
Text
 dimensioning, 396–397, 406
 font and text height changes, 51
 positioning, 396–397
 unidirectional, 395–396
Text tool, 49–52
Third-angle projections, 191–193
Threads, 311–322
 accessing, 311
 blind holes for, 317–319, 321–322, 324–325

- callouts, 312–314
- Hole tool for, 319–321
- internal, 315–316
- representations of, 314–315
- terminology for, 312
- 3D dimensioning, 430–431**
- 3D modeling, 85–149**
 - Chamfer tool for, 104–105
 - Circular Pattern tool for, 113–114
 - Coil tool for, 146–148
 - default planes and axes in, 123–125
 - editing, 88–90, 120–123
 - Extrude tool for, 10, 12, 15–16, 85–87
 - Face Draft tool for, 105–106
 - Fillet tool for, 98–103
 - holes in, 10–12, 17–19, 96–98
 - Loft tool for, 141, 143
 - material designations for, 148–149
 - Mirror tool for, 111–112
 - Rectangular Pattern tool for, 112–113
 - Revolve tool for, 94–96
 - ribs (webs) in, 139–141
 - saving, 12
 - Shell tool for, 107–108
 - sketch planes and, 114–119
 - Split tool for, 109–110
 - starting, 9–12
 - Sweep tool for, 144–146
 - tapering in, 87–90
 - ViewCube and, 90–93
 - work axes in, 135, 138–139
 - work planes in, 125–134
 - work points in, 135–137
- Three-point arc tool, 36–37**
- Three Point Rectangle tool, 44**
- Through holes, 96–97, 320–321**
- Thrust bearings, 671, 681–685**
- Title blocks, 246–248, 255–258**
- Tolerances, 455–521**
 - analysis of, 469–470
 - angular, 463–465
 - angularity, 509
 - chain and baseline dimensions and, 468–470
 - circularity, 495
 - cylindricity, 495–496
 - datums and, 498, 504–505
 - defined, 455
 - design problems and, 486–487, 519–521
 - direct methods, 455–456
 - double dimensioning and, 466–467
 - expressions, 457
 - fastener size and, 490
 - fits, 474–476, 478–479
 - fixed condition and, 488–489, 517
 - flatness, 491
 - floating condition and, 487–488, 514–515

- of form, 491
- geometric, 491, 496–500, 503
- hole and shaft, 478, 679–681
- holes and, 470–473
- limit, 455, 462–463
- linear dimensions and, 472–473
- nominal sizes and, 474
- of orientation, 504
- parallelism, 508
- perpendicularity, 498–499, 505–508
- plus and minus, 455–462
- positional, 500–502, 512–513
- profile, 509–510
- rectangular dimensions and, 470
- runout, 510–512
- shaft, 672–673
- standard, 465–466
- straightness, 492–495, 499–500
- surface finishes and, 480–486
- virtual condition and, 514
- Tolerances of form, 491**
- Tolerances of orientation, 504**
- Tolerance studies, 469–470**
- Top-down assemblies, 221, 260–280**
- Torsion springs, 577–580**
- Trails, hiding, 237**
- Transition fits, 474, 475**
- Transition locational fits, 826**
- Trim tool, 37, 65–66**
- Tweak Components tool, 236–237**
- 2D sketching, 27–76**
 - arcs, 36–38
 - chamfers, 46–48
 - circles, 33–35
 - Constrain panel in, 52–55
 - Copy tool in, 62–63
 - Dimension tool in, 34, 49, 52
 - editing, 68–69
 - ellipses, 40–42
 - Extend tool in, 66–67
 - fillets, 45
 - hexagons, 48–49
 - Line tool in, 29–31
 - Mirror tool in, 59–60
 - Move tool in, 60–62
 - Offset from Plane tool, 142, 143
 - Offset tool in, 67–68
 - patterns for, 55–60
 - Point tool in, 43
 - polygons, 48–49
 - rectangles, 4–6, 43–44
 - Rotate tool in, 64–65
 - Sketch panel for, 27–29
 - splines, 39
 - Text tool in, 49–52
 - Trim tool in, 37, 65–66
- Two Point Rectangle tool, 43**

U

U-brackets, 675–676

Undo tool, 9, 88

Unidirectional text, 395–396

Unified screw threads, 313–314

Uniform shafts, 606–610

Unilateral tolerances, 455–456

Units, dimensioning, 400–402

V

Variable fillets, 103

Vertical dimensions, 395–396

ViewCube, 90–93

Views. *See* Orthographic views

Virtual condition, 514

W

Washers, 345–348

Webs (ribs), 139–141

Weldment drawings, 779

creating, 792–793

defined, 779

fillet welds, 779–786, 789–790

groove welds, 791–792

symbols, 787–789

Whole depth, 698

Wire gauges, 823

Woodruff keys, 629–632

Work axes, 135, 138–139, 263–264, 271, 584–587

Working depth, 698

Work planes, 125–134

angled, 129–132

defined, 125

help features for, 125–126

hiding, 129

oblique, 136–137

offset, 132–134

restoring, 129

tangent, 127–128

Work points, 135–137, 263–264

Worm gears, 698, 726–729