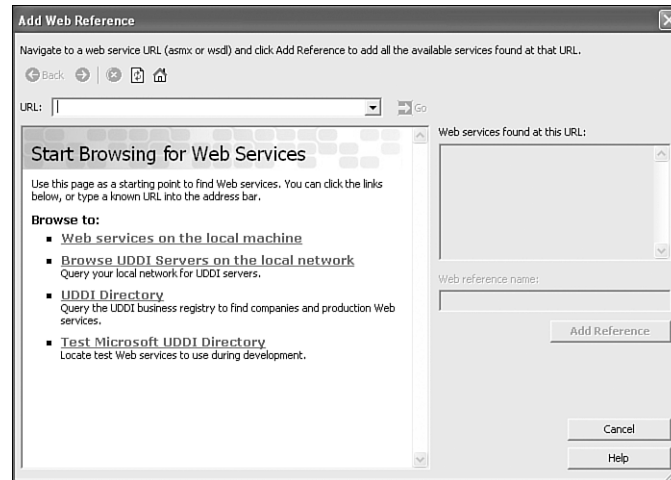


**FIGURE 13.9**  
*The Add Web Reference dialog box.*



The Add Web Reference dialog pops up as shown in Figure 13.9.

The Add Web Reference dialog has several features. You can search the UDDI directory that was discussed earlier today. You can also search the Test Microsoft UDDI Directory. Microsoft has several Web services, such as the Knowledge Base search service, that you can test and implement in your own applications.

Because you don't want to do either of the available options, you must type the URL of the Web service you want to consume. In the Address box, type

**`http://localhost/fistService_vb/Service1.asmx`**

or

**`http://localhost/fistService_cs/Service1.asmx`**

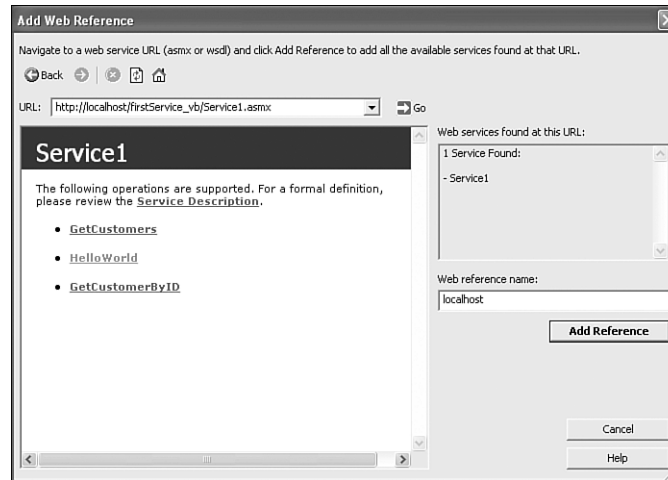
depending on what you named your project earlier.

After you type in the address and press Enter, you should see something similar to Figure 13.10, which is the Service Help Page for the Web service named `Service1.asmx`.

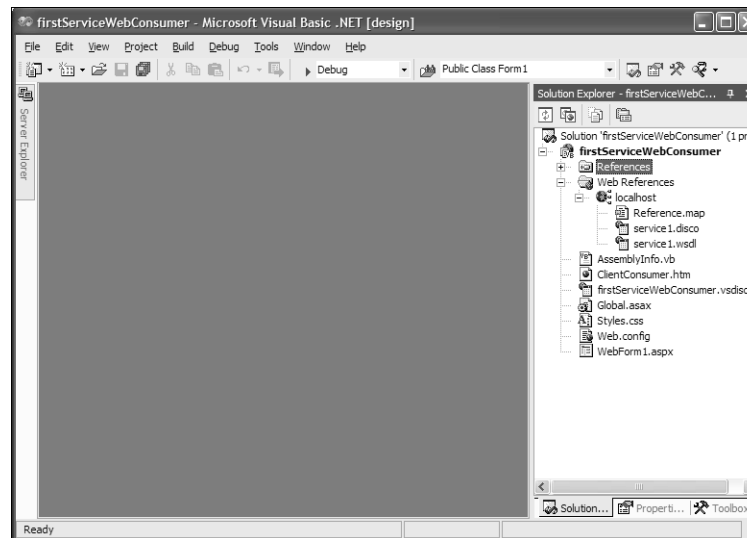
From here, you have the same capabilities that you did when you ran the Web service from the project earlier. You can view the service descriptions, invoke the Web services, and inspect additional information that you might need about implementing the Web service. To add this reference to your project, click the Add Reference button. Your Solution Explorer should now look like Figure 13.11.

**FIGURE 13.10**

*Service Help page for Service1.asmx.*

**FIGURE 13.11**

*Solution after adding a Web reference for Service1.asmx.*

**Tip**

When you add the Web reference, the Web server name where the Web service is located shows up in the Solution Explorer under Web References. You can right-click on the name of the Web server (in this case, localhost) and change it to something more familiar or recognizable.

Now that you've added the Web reference, you can reference the methods in the Web