

# Index

## A

- <A HREF=> attributes, 498
- Accent sensitivity option, 267
- Access Control Lists (ACLs), 482
- Access reports, converting, 380–381
- Accounts
  - in installation, 47–48
  - user. *See* Users and user accounts
  - Web service, 53–56
- ACLs (Access Control Lists), 482
- Action property, 368–369
- Activation, configuring, 70–71
- Active Directory Domains, 668
- Add method in IDataParameterCollection, 626–627
- Add New Data Source option, 252
- Add New Item dialog, 249, 444, 451–452, 456, 459–460
- Add New Report screen, 113
- Add/Remove Windows Components
  - dialog, 667
- Add Web Reference dialog, 552–557
- Add Windows Components Dialog, 668
- Administrators
  - credentials for, 48
  - in role-based security, 134
  - tasks for, 208
- Administrators Group
  - permissions for, 139
  - security with, 230–231
  - user accounts in, 211–213
- ADO.NET DataSet, 11
- Advanced Textbox Properties dialog, 385
- AdventureWorks2000 sample database
  - installing, 53
  - Report Project wizard for, 88
- Aggregates
  - in Chart controls, 421
  - expressions for, 293
  - for Report Parameters, 291
  - Report Processor for, 271
  - in Report wizard, 106
  - for ReportItems, 378
  - RowNumber and RunningValue
    - functions, 335–336
  - in Textbox controls, 332
- Alert boxes in Report Manager, 527–528
- Aliases for DataSet fields, 269
- Alignment in Matrix reports, 120
- AllCode evidence, 477
- AllCodeMembershipCondition class, 477
- Allow History to be Created Manually
  - option, 177
- AllowPartiallyTrustedCallersAttribute
  - attribute, 484
- Ampersands (&) in URLs, 499
- Anarchists, 220
- and operator in DataSet filters, 278
- Annotating
  - Chart controls, 408–413
  - Table controls, 372–377
- Appearance tab, 419–420
- Application Directory evidence, 477
- Application event logs, Data Processing
  - extension for, 644–647
- Application Name clause for subscriptions, 184

## 710 Index

- Application Name property
  - in connection strings, 92, 255
  - for Data Sources, 87, 91–93, 252
- ApplicationDirectoryMembershipCondition
  - class, 477
- Area charts, 400
- ArrayList collection, 627
- ASP.NET
  - IFrameless approach, 600–601
  - web forms for parameter collection, 546
- aspnet\_regiis.exe process, 65
- aspnet\_wp.exe process, 66, 598–599
- Assemblies
  - Code Access Security evidence for, 473, 475–479
  - expressions in, 17
  - FullTrusts for, 609
- AssemblyKeyFile attribute, 485
- AssemblyVersion attribute, 307–308, 485–487
- Assert method in debugging, 563–565
- AssertedBackColor function, 472, 479
- Assigning roles, 139–148, 581–582
- Asterisks (\*) in DataSet filters, 272
- At signs (@) for query parameters, 280
- Auditing Data Sources, 234
- Authentication Methods dialog, 560
- Auto label positioning, 412
- Auto-starting option, 56
- AutoSize setting, 362
- Available values for Report Parameters, 286–290
- Axes in Chart controls, 392–393, 398
- B**
- B/W (black and white) printers, 417–418
- BackgroundImage property, 352–355, 415
- BackgroundRepeat property, 353
- Backing up policy files, 467
- Bands in Report Designer, 15
- Bang operator (!) in DataSet filters, 274–275
- Bar charts, 400
- Base name element, 458–459
- Batches for roles, 581–582
- Behavior files, 528
- Behaviors in Report Manager, 527–530
- Between operator in DataSet filters, 275
- Binary comparisons in DataSet filters, 273
- Binary Interchange File Format (BIFF), 155
- Binary Large Objects (BLOBs)
  - for images, 352–353
  - PublicKey, 488
  - Report Processor for, 29–30
- BinaryWrite method, 594, 597
- Binding
  - to controls, 270, 331–332, 338
  - query parameters, 282
  - in report layout, 322
  - sorting expressions, 341–342
  - to versions, 485–486
- Bit lengths for certificates, 676
- Black and white (B/W) printers, 417–418
- Blank command, 500
- BLOBs (Binary Large Objects)
  - for images, 352–353
  - PublicKey, 488
  - Report Processor for, 29–30
- Body section in Report Designer, 16
- BOL (Books Online) help file, 45, 707–708
- Bookmark action, 369
- Bookmark property, 368
- Bookmark referencing for Document
  - Maps, 368
- Books Online (BOL) help file, 45, 707–708
- Boolean data type, 285
- Boost Table Report.RDL template, 455
- BoostStyleSheet.dll file, 493
- BoostStyleTemplates.xml file, 490, 493
- Border property, 416
- Bottom N operator, 275
- Break method
  - for Data Processing extensions, 629
  - for exception handling, 565

- for rendering, 597–598
- Broken Data Sources, repairing, 574–578
- Browse-only permissions, 143
- Browser role, 33, 141–142
- Browsers
  - credentials for, 134–139
    - assigning roles to user accounts, 139–145
    - roles and tasks in, 145–148
  - languages for, 339
  - for previewing reports, 319
- Brute-force attacks, 648
- Bubble charts, 400, 419–422
- Business Intelligence Projects, 6, 247–248

## C

- C# projects, 551
- CA Identifying Information screen, 670
- Cached Snapshots, 30–31
- Caching
  - Intermediate Format, 30–32
  - managed reports, 34–35, 167–170
  - for report previews, 320–321
- Calculated fields
  - in DataSets, 268–270
  - in Matrix controls, 425
- Calendar controls, 172
- Camelcase, 104
- CanGrow property, 334
- CanShrink property, 334
- CAs. *See* Certificate Authorities (CAs)
- CAS. *See* Code access security (CAS)
- Cascading Parameters feature, 294–297
- Cascading style sheets (CSSs), 461
  - for behaviors, 527–530
  - for company logos, 526–527
  - creating, 461–462, 488–493
  - parameters area in, 530–534
  - for Report Manager, 523–525
- Case sensitivity
  - in collation sorting, 267
  - in DataSet filter comparisons, 273–274
  - in policy files, 70

- in searches, 149
- Casual style
  - for Matrix reports, 117
  - for tables, 102
- CatalogItems class, 496, 566–569
- Category fields
  - for Chart controls, 401–402
  - in Landing Zones, 395–396
- CD keys, 45–46
- CDATA section, 529
- CDOs (Collaboration Data Objects), 701
- Certificate Authorities (CAs)
  - for access, 653–654
  - for domains, 652
  - installing, 666–670
  - obtaining certificates from, 666–667, 670–693
  - selecting, 652–653
  - for SSL, 666–667
  - stand-alone, 693–695
- Certificate Authority snap-in, 687–688
- Certificate dialog, 664
- Certificate Request File Name screen, 680
- Certificate request files, 658
- Certificate Request Submission screen, 681
- Certificate Revocation Lists (CRLs), 653
- Certificate Services ISAPIs, 670
- Certificate Summary screen, 692
- Certificate Wizard, 690
- Certificates, 661–662
  - CAs for. *See* Certificate Authorities (CAs)
  - HTTP requests. *See* HTTP certificate requests
  - IIS certificate wizard for, 654–658
  - issues with, 658–659
  - obtaining, 666–667, 670–693
  - for web servers, 40, 43–44, 670–693
- Certification Authority Type screen, 669
- certnew.cer file, 690–691
- certnew.p7b file, 690–691
- certreq.txt file, 684

## 712 Index

- Change or Remove Instance dialog, 82–83
- Changed data, auditing, 234
- Chart controls
  - annotating, 408–413
  - axes in, 392–393, 398
  - bubble and scatter charts, 419–423
  - color in, 416–419
  - creating, 401–402
  - data for, 389–391
  - history, 387–389
  - images in, 354
  - Landing Zones in, 391–394
    - Category Fields, 395–396
    - Data Fields, 394–395
    - Series Fields, 397
  - pie charts and doughnut charts, 405–408
  - programming, 403–405
  - stock charts, 413–415
  - types, 399–400
  - user interface for, 391–398
- Chart Properties dialog, 399, 416
- Chart property pages, 388
- Charting Property Pages dialog, 20–21, 24–25
- Choose a Certificate Authority screen, 679
- Choose the Deployment Location screen, 103
- Choose the Table Layout screen, 101
- Choose the Table Style screen, 101–102
- Class identifier (clsid) element, 456
- Class libraries
  - for Data Processing extensions, 616–617
  - for sharing code, 306–314
- Class properties, accessing, 312–314
- Close Method, 622
- CLR (Common Language Runtime), 17–18
- CLRSharedFunction.RDL report, 311
- clsBuildSQL class, 308
- clsBuildSQL.vb file, 312
- clsid (class identifier) element, 456
- Code access security (CAS), 18, 607
  - AllowPartiallyTrustedCallersAttribute attribute for, 484
  - AssemblyKeyFile attribute for, 485
  - AssemblyVersion attribute for, 485–487
  - code blocks for, 462–466
  - CodeGroups for, 475–478
  - NamedPermissionSets for, 473–475
  - permissions in, 471–473
  - policy configuration files for, 69, 466–471, 487–488
  - StrongName key in, 483–484
  - StrongName membership condition in, 482–483, 487–488
  - style sheets for, 461–462, 488–493
  - URL evidence in, 478–482
- Code and code blocks
  - for Data Processing extensions, 617–619
  - permissions, 471–472
  - sharing, 306–314
  - for style sheets, 462–466
- Code tab
  - for code blocks, 463
  - for custom code functions, 302–303
  - for images, 364–365
  - for Report Properties, 310
- CodeBehindBackColor function, 462–463, 468
- <CodeGroup> element, 480, 487–488
- CodeGroups
  - configuring, 475–484
  - for rspreviewpolicy.conf, 612
  - for rssrvpolicy.config, 492, 611–612
- Coercion with DataSet filters, 277
- Collaboration Data Objects (CDOs), 701
- Collation Sorting Styles, 266–268
- Colons (:)
  - for query parameters, 280
  - in URLs, 499
- Color in Chart controls, 416–419

- Column charts, 400
- Columns
  - in Matrix controls, summing, 436–437
  - in Report wizard, 107
  - width, 118–119
- Columns property, 16, 325
- ColumnSpacing property, 325
- Comma-delimited (CSV) files, 155
- Command interface for Data Processing extensions, 617
- Command line
  - for configuration, 70–72
  - for installation, 51
- Command names in SSL installation, 654, 657–658, 677–678
- Command text for DataSets, 239–240
- Command type for DataSets, 259
- Commands in URLs, 499–500
- Commands tab, 249
- CommandText element, 258
- CommandText property, 629–630
- CommandTimeout property, 630
- CommandType property, 630–631
- Comments in policy files, 70
- Common Language Runtime (CLR), 17–18
- Company logos in Report Manager, 526–527
- Comparisons in DataSet filters, 273–274
- Completing the Report Wizard screen, 104, 117–118
- Completing the Web Server Certificate Wizard screen, 682–683, 692
- Component Update dialog, 52
- Concurrent connection limitations of IIS on XP, 41–42, 136, 703–705
- Confidentiality. *See* Security
- <configuration> element, 486
- Configuration files
  - for Data Processing extensions, 641–644
  - policy, 69
  - RSReportDesigner.config, 69
  - RSReportServer.config, 67
  - RSWebApplication.config, 68–69
  - for SSL, 68, 696–697
  - vs. XML files, 70
- Confirmation page, 695
- Connection interface for Data Processing extensions, 617
- Connection strings, 6, 224
  - Application Name property in, 92, 255
  - credentials in, 256
  - Data Link Property wizard for, 91
  - displaying, 93
  - encryption with, 234
  - for EventLog Data Processing extension, 644–645
  - for new reports, 251
  - Report Server for, 224–225
- ConnectionString property, 615, 621, 623
- ConnectionTimeout property, 621, 623, 705
- Containers, temporary, 346–351
- Contains conditions in searches, 568
- Content Manager role, 33, 140–141
- Context-sensitive Help hyperlink, 138
- Controls
  - binding, 270, 322, 331–332, 338
  - Chart. *See* Chart controls
  - creating, 329–330
  - Data Region, 332–333
  - designing, 116
  - Image, 352–353
    - adding to reports, 355–356
    - BackgroundImage property for, 353–354
  - layout for, 11–16
  - List, 333–334
    - grouping, 345–351
    - sorting, 339–343
  - Matrix. *See* Matrix controls and reports
  - overlapping, 381
  - RepeatWith property for, 336–338
  - right margins for, 330
  - styles of, 117

## 714 Index

Subreports, 381–385  
 Table, 335, 369–372  
     customizing and annotating, 372–374  
     recursive data structure handling in,  
         374–377  
     in Report Designer, 16  
 Textbox. *See* Textbox controls  
 Converting Microsoft Access reports,  
     380–381  
 Copying certificate requests, 684–685  
 Count function  
     for bubble charts, 421  
     in Report wizard, 106  
 CountDistinct function, 433–436  
 Create a New Certificate option, 656  
 Create Linked Report option, 199–200  
 CreateCommand method  
     in Connection, 640  
     in EventLogConnection, 624  
 CreateDataSource method, 576  
 CreatedBy property, 567  
 CreateFolder method, 581, 584  
 CreateHistorySnapshot method, 585  
 CreateParameter method, 634  
 CreateReport method, 584–585  
 CreateReportHistorySnapshot method,  
     585–586  
 CreateRole method, 579  
 CreateSchedule method, 570, 573  
 CreationDate property, 567  
 CreationTime property, 314  
 Credentials  
     activation for, 70–71  
     in connection strings, 256  
     Data Link Property wizard for, 91  
     for Data Processing extensions,  
         614–615, 639, 648–649  
     encrypted, GUIDs for, 460  
     encrypting and storing, 72  
     for EventLog Data Processing  
         extension, 645  
     in HTML postbacks, 516–517  
     for installation, 48

Report Server for, 224–225  
     in SOAP, 559–561  
     SSL for, 665  
     stored, 246, 648–649  
     web browser, 134–139  
         assigning roles to user accounts,  
             139–145  
         roles and tasks in, 145–148  
 Credentials tab, 645  
 CRLs (Certificate Revocation Lists), 653  
 Cryptography. *See* Encryption  
 Crystal Reports, 2  
 CSSs. *See* Cascading style sheets (CSSs)  
 CSV (comma-delimited) files, 155  
 Currency format  
     in Matrix reports, 119  
     in Report wizard, 107  
     in RSReportHost, 21  
     Textbox controls for, 338–339  
 Custom code  
     functions, 301–306  
     for transforming images, 364–365  
 Custom report views, 160–161  
 Customizing Table controls, 372–377  
 CustomParameters function, 533  
 CustomParameters.htc file, 532–533

## D

DailyRecurrence option, 570  
 Data binding  
     to controls, 270, 331–332, 338  
     in report layout, 322  
 Data caching  
     Intermediate Format, 30–32  
     managed reports, 34–35, 167–170  
     for report previews, 320–321  
 Data-driven subscriptions, 35, 182–191  
 .data extension, 320  
 Data Fields in Landing Zones, 394–395  
 Data Link Dialog applet, 255  
 Data Link Properties dialog  
     for connections, 91–93, 252

- for Data Processing extensions, 253–254
  - for new reports, 251
- Data Link Property wizard, 91
- Data Options tab, 266
- Data Processing extensions, 3, 605
  - class libraries for, 616–617
  - coding, 617–619
  - configuration files for, 641–644
  - deploying, 640–641
  - designing, 615–616
  - EventLog for, 644–647
  - EventLogConnection for, 619–624
  - EventLogDataReader for, 636–639
  - IDbCommand and
    - IDbCommandAnalysis for, 628–636
  - impersonation in, 639–640
  - for Microsoft Samples, 606–614
  - for new reports, 252–256
  - Parameters and ParameterCollection for, 625–628
  - security for, 648–649
  - for writing reports, 614–615
- Data Region controls, 16, 332–333, 382
- Data Source page, 168–169
- Data Sources, 2–3, 237–238
  - Application Name properties for, 87, 91–93
  - characteristics, 238
  - configuring, 206–207
  - Connection strings for, 252
  - creating, 251–256
  - for Data Processing extensions, 252–256, 614, 639
  - deleted, repairing, 574–578
  - for EventLog Data Processing extension, 644–645
  - for linked managed reports, 198–199
  - mirrored, 245–246
  - passwords for, as URL parameters, 511–513
  - in rendering reports, 163–164
  - in Report Designer, 8
  - in Report Manager, 34, 202–207
  - in Report wizard, 89–91, 114
  - security for, 225–228
    - auditing, 234
    - credentials stored for, 224–225
    - integrated security for, 230–233
    - RSExecRole membership, 228–229
    - runtime prompting, 223–224
    - shared, 203–204
    - TLS, 233–234
  - SOAP methods for, 576–578
  - suites of, 244–245
  - templates for, 460
- Data tab
  - for Chart controls, 393, 403–405, 410–411
  - for custom code functions, 304
  - for EventLog Data Processing extension, 645
  - for stored procedures, 261
- Data Transformation Services (DTS) project, 214
- Data types for Report Parameters, 285–286
- Database Creators, 48
- Database fields for DataSets, 268–270
- Database images, 355
- DatadrivenFileShareExample table, 185–191
- DataReader interface, 617
- Dataset dialog, 631
- DataSet Fields collection, 301
- DataSet Properties dialog, 261
- DataSetName property, 332
  - for Matrix controls, 427
  - for Table controls, 370
- DataSets, 6, 237–238
  - characteristics, 239–241
  - for Chart controls, 389–390
  - creating, 256–258
  - fields for, 268–270
  - filtering, 270–271



## 716 Index

- case-sensitive comparisons in, 273–274
  - NULL fields in, 272
  - string fields in, 272
  - wildcards in, 272
- query designers for
  - generic, 258–260
  - GuiQD, 260–263
  - query options for, 265–268
  - for Report Designer, 8–11
  - from stored procedures, 241
  - transactions for, 263–265
- DataSource table security, 225–227
- DataSourceCredentials parameter, 591
- DataSourceDefinition class, 576
- <DataValue> element, 403
- Dates
  - in Matrix controls, 425–426
  - in parameters, 282
- DateTime data type, 285
- db\_datareader role, 143, 153
- Debug.Assert method, 563–565
- Debugger.Break method
  - for Data Processing extensions, 629
  - for exception handling, 565
  - for rendering, 597–598
- Debugging
  - Data Processing extensions, 629
  - in installation, 66
  - in SOAP, 562–565, 598–599
- DebugLocal configuration, 311
- DebugLocal mode, 20, 464–465
- Decoded URL items, 498
- Default generic query designers, 9
- Default Rendering extension, 193
- Default URLs for Report Manager, 33
- Default values for Report Parameters, 286, 290–292
- Default Web Site Properties dialog, 654–655, 673
- DefaultCredentials class, 560, 588
- <DefaultRenderingExtension> element, 192
- DefaultTraceSwitch attribute, 66
- Define Query Parameters dialog, 281, 632
- Delayed or Immediate Request screen, 675
- Delayed signing, 485
- Deleted Data Sources, 204–206, 574–578
- Deleting
  - folders, 144–145
  - Reporting Services, 82–84
  - snapshots, 176
- Delivery extensions
  - printing, 28–29
  - in Report Server, 27–29
  - in Subscriptions, 192–193
- Deploy.bat file, 309, 641
- Deploying
  - in Data Processing extensions, 640–641
  - reports, 317–321
  - Matrix, 129
  - in Report wizard, 102–103, 110–112
  - tuned, 244
- Deployment folders, 242–244
- Description element, 456–457
- Description property in searches, 567
- Descriptions
  - for roles, 146
  - in templates, 456–457
- Design the Matrix screen, 116
- Design the Query screen, 94–95, 98–99, 115
- Design the Table screen, 100
- DesignerParameters property, 633
- Details Grouping dialog, 348, 375–376
- Details view, 144, 156–157
- Developer Edition, 36
- Developer Role Definition, 578–579
- Development server
  - Data Sources for, 244–246
  - deployment folders for, 242–244
- Devenv.exe.config file, 486
- DeviceInfo string, 590, 596
- Diagnostics namespace, 637
- Different servers, joining tables from, 257



- Directory Security tab, 654–655, 673, 690
- DisableISec.rss script, 232
- <DisplayErrorLink> element, 69, 145
- Dithering, 417
- DNS names in SSL installation, 654, 657–658, 677–678
- Document Maps
  - displaying and hiding, 153
  - for drilldown, 367–369
  - in Report Designer, 18–19
- Documentation, refreshing, 84
- Domain controllers
  - certificate authorities, 652–654
  - installation on, 42
- <DOMAIN> element, 135
- Dot operator (.) in DataSet filters, 274
- Doughnut charts, 400, 405–408
- Download CA certificate option, 690
- DPAPI libraries, 460
- Drilldown, 150–151, 365–369
- Drivers, printer, 28
- DROP DATABASE statements, 222
- dsp: prefix, 501
- dspe: prefix, 501
- dsu: prefix, 501
- DTS (Data Transformation Services)
  - project, 214
- Dundas Chart control, 388, 390
- Duplicate names in Data Processing
  - extensions, 618
- Dynamic SQL queries
  - custom code functions for, 301–306
  - executing, 298–301
- E**
- E-mail
  - SMTP configuration for, 60–62, 699–700
  - for subscriptions, 192
- Edit Chart Value dialog, 404
  - for bubble charts, 419–421
  - for labels, 410–412
  - for Subreports, 384
- Edit Expression dialog, 293–294
- Edit filters for Knowledgebase, 707–708
- Edit Item Security option, 140, 194–195
- Edit Metabase Data dialog, 704
- Edit Property Value dialog, 92
- Edit References dialog, 484–485
- Edit Role assignment web page, 146
- Editing
  - data-driven subscriptions, 185
  - DataSet fields, 269
  - Textbox controls, 331
- Embedded credentials, 615
- Embedded images, 355–356
- Embedded Images dialog, 356
- Enable drilldown option, 116
- EnableIntegratedSecurity property, 231–232
- Encoding parameter, 591
- Encrypted content, removing, 71–72
- Encryption
  - bit length for, 676
  - for certificates, 656
  - for credentials, 72, 460
  - for passwords, 136, 512
  - SSL for, 57
  - in strong naming, 482
  - for subscriptions, 188–189
  - TLS, 225, 233–234, 246
- EndDate property, 571–572
- EndDateSpecified property, 572
- Enterprise Edition, 37
- Equal signs (=) in filters, 273, 275
- Equals conditions in searches, 567
- Error messages, options for, 69
- Escaped URL items, 498–499
- Evaluation Edition, 36
- EventLog class, 618, 637–639
- EventLog Data Processing extension, 644–647
- EventLogCommand class, 625, 628
- EventLogCommandClass interface, 627
- EventLogConnection class, 619–622
  - ConnectionTimeout property, 623

## 718 Index

CreateCommand method, 624  
 LocalizedName property, 623  
 Open and Close methods, 622  
 SetConfiguration method, 622–623  
 State property, 624  
 EventLogDataExtension class, 623  
 EventLogDataParameter Class, 626–627  
 EventLogDataParameterCollection  
     interface, 627, 633  
 EventLogDataReader class, 635–639  
 EventLogParameters collection, 638  
 Evidence for assemblies, 473, 475–479  
 Evil-minded perpetrators, 220–221  
 Exception handling in SOAP, 560,  
     562–565  
 Exchange mailboxes, 60  
 Exclamation points (!) in DataSet filters,  
     274–275  
 <ExcludedRenderFormats> element, 193  
 ExecuteBatch method, 581  
 ExecuteReader class, 635–636  
 Executing stored procedures  
     generic query designer for, 259–260  
     GuiQD for, 261  
 Execution logging, 214  
 Execution page, 167–168  
 Execution permissions, 465, 473  
 Execution properties, rights to, 164–165  
 Execution time limitations for managed  
     reports, 174–178  
 Execution timeouts in Site Settings, 213  
 ExecutionLog table, 214, 440–441  
 ExecutionTime variable, 328  
 Exists method, 637  
 Expiration date for snapshot schedules,  
     172–173  
 Expiration time for Report Server sessions,  
     509  
 Export formats lists, 155  
 Exporting  
     managed reports, 154–156  
     Matrix controls, 438–440  
 <Expression> element, 293

Expression property, 124  
 Expressions, 293–294  
     in assemblies, 17  
     for Chart control properties, 405  
     for DataSet filters, 273  
     for Matrix reports, 124  
     Preview tab for, 300  
     sort, 340–342  
 Extended properties dialog, 427, 431  
 Extending Report Manager, 35–36  
 Extensible Stylesheet Language  
     Transformations (XSLT), 27  
 Extension interface, 617  
 @ExtensionSettings parameter, 188  
 External images, 357–359  
     custom code for, 364–365  
     formatting, 360–362  
     issues with, 363–364  
     user-enabled fields in, 360

## F

Feature Selection dialog, 46, 53, 63  
 Field Value property, 401  
 Fields  
     for Chart controls, 391–393, 401  
         Category, 395–396  
         Data, 394–395  
         Series, 397  
     for DataSet filters, 274–278  
     for DataSets, 268–270  
     for external images, 360  
     for Matrix controls, 116, 428  
     for Report Designer, 13  
     for subscriptions, 185  
 Fields collection, 301  
 Fields Selector Window, 269  
 FILEEXTN column, 189  
 FileIOPermission errors, 465, 471–472  
 <FileShareConfiguration> element, 193  
 Fill tab, 416–417  
 Fills for Chart controls, 416–417  
 Filtering  
     DataSet data, 270–271

- case-sensitive comparisons in, 273–274
  - NULL fields in, 272
  - string fields in, 272
  - wildcards in, 272
- Knowledgebase, 707–708
- Table controls, 374
- FilterValue operators, 275
- FindItems Method, 567–569
- First function, 332
- First Reports Project, 113
- FirstMatchCodeGroup class, 479
- Flags element, 458
- Float data type, 285
- Folders
  - deleting, 144–145
  - in rendering reports, 156–157
  - report items in, 565–569
  - Report Manager for, 33–34
  - for roles, 581–582
- FontWeight property, 373
- Footers
  - eliminating, 380
  - in report layout, 327–328
  - templates for, 450–451
  - working with, 378–380
- Foreign Key columns in GuiQD JOINs, 262
- Format property
  - in Matrix controls, 119, 430
  - in Rectangle controls, 348
  - in Report wizard, 107
  - in RSReportHost, 21
  - in Textbox controls, 338–339
- Formats in rendering reports, 154–156
- Formatted SQL strings, functions for, 302–303
- Formatting
  - external images, 360–362
  - in Matrix reports, 119
- Forward slashes (/) in URLs, 499
- 403.9 errors, 41–42, 703–705
- Free form control hosting, 334

- FsiDataExtension.dll file, 607
- FullTrusts
  - for assemblies, 609
  - for Data Processing extensions, 641
  - in NamedPermissionSets section, 473
- Functions, custom, 301–306
- Fx option, 293, 405

## G

- General hyperlink for linked managed reports, 199
- General tab
  - for cached data, 321
  - for Chart controls, 399
  - for Data Processing extensions, 252
  - for DataSet transactions, 263–264
  - for encryption, 49
  - for grids, 331
  - for languages, 172
  - for List controls, 346
  - for Matrix controls, 122
- Generic query designer, 258–260
- Geographical Information screen, 679
- Geometries, report, 452
- Get command, 500
- Get Online Help link, 145
- GetCustomerSQL function, 308
- GetDataSourceContents function, 499
- GetEnumerator method, 626–627
- GetEventLogEntries method, 635, 637–638
- GetParameters method
  - in EventLogCommandClass, 627–628
  - in IDbCommandAnalysis, 617, 625, 632–633
- GetReportDataSources method, 575
- GetReportDefinition method, 583–584
- GetResourceContents method, 499
- Global variables, 328–330
- Gradients
  - for Chart controls, 417
  - for Textbox controls, 448–449
- GRANT statement, 222

## 720 Index

- Graphical Query Designer (GuiQD) for
    - DataSets, 260–261
    - JOINs with, 262–263
    - for stored procedures, 261
  - Graphical User Interface (GUI) in Report wizard, 95–96
  - Grayscale for Chart controls, 417–418
  - Greater than signs (>) in DataSet filters, 275
  - Greeked graphics, 447
  - GreenBars in Matrix controls, 433–436
  - Grids, snapping controls to, 331
  - Group-by fields in Report wizard, 99–100
  - GROUP BY queries for external images, 357–358
  - Group properties for Table controls, 375–376
  - Grouping
    - in List controls, 345–351
    - in Matrix controls, 120–127, 431–433
    - in Report wizard, 107–110
  - Grouping and Sorting Properties dialog
    - for Matrix controls, 124, 431–434
    - in Report wizard, 109–110
  - Groups tab for Matrix controls, 429
  - GUI (Graphical User Interface) in Report wizard, 95–96
  - GUIDs
    - for encrypted credentials, 460
    - <InstallationID> for, 67, 81–82
  - GuiQD (Graphical Query Designer) for
    - DataSets, 260–261
    - JOINs with, 262–263
    - for stored procedures, 261
    - templates for, 450–451
    - working with, 378–380
  - Height property, 326–327
  - HelloWorld.htc behavior file, 528
  - Help for Report Manager, 35
  - Hidden option for Matrix controls, 127
  - Hidden property
    - with drilldown, 366
    - for Subreports, 383
  - Hide Details view, 230
  - Hiding Subreports, 383–385
  - Historical reports, sorting, 343–345
  - History
    - IF for, 30–31
    - properties for, 175–176
    - Report Manager for, 34–35
    - SOAP for, 585–587
  - History rights to user accounts, 177–178
  - History snapshots, limits of, 213
  - History tab, 153, 175
  - HistoryID parameter, 590
  - Horizontal chart rotation, 406–407
  - HTML
    - exporting managed reports to, 155
    - rendering, 588–589
    - source files, 496
  - HTML forms in URL addressing, 513–517
  - HTMLViewer.css style sheet, 518
  - HTTP certificate requests
    - accessing, 682–683
    - advanced, 684
    - copying, 684–685
    - downloading certificates in, 690
    - pasting, 686
    - pending, 686–687, 691
    - responses for, 689
    - selecting to query, 689
    - for stand-alone Certificate Authorities, 693–695
    - status of, 688
    - submitting, 684–685
- ## H
- Hash evidence, 477
  - Hashing for Chart controls, 417–418
  - HashMembershipCondition class, 477
  - Headers
    - eliminating, 380
    - in report layouts, 327–328

HTTP postback in URL addressing,  
513–517

HTTPS, SSL for, 57–58

https:// prefix, 663

## I

Icon Resource Id (IconResId) element,  
458

IconDll element, 457

IDataParameter interface, 617, 625–626

IDataParameterCollection interface, 617,  
626–627

IDataReader interface, 617

IDataReaderExtension interface, 617, 637

IDbCommand interface, 617, 625,  
628–636

IDbCommandAnalysis interface, 617, 625,  
628–636

IDbConnection interface, 617, 619

IDbConnectionExtension interface, 617,  
619–620

IDbTransaction interface, 617

IDbTransactionExtension interface, 617

IF (Intermediate Format)

    caching, 30–32

    Report Processor for, 29–30

IFrameless Approach, 600–601

IFRAMEs, 531–532, 544–545

IIF (inline if) statements, 343

IIS

    installation on, 47, 51–64

    MaxConnections in, 136, 703–705

IIS certificate wizard, 654–658, 674–683,  
691–692

IIS Metabase Editor, 703–705

IISRESET command, 42, 232

IL (intermediate language), 4

Image property, 601

Image wizard, 356, 363

Images, 352–353

    adding to reports, 355–356

    BackgroundImage property for,  
353–354

    external. *See* External images

Images folder, 523

Impersonate Privilege, 42

Impersonation, 639–640

Implements operator, 621

In operator, 275

Indexed views for external images,  
357–358

Individual subscriptions, 179–181

Inline if (IIF) statements, 343

Input parameters for custom code  
functions, 304

Install this CA certification path option,  
694

Installation

    Certificate Authorities, 666–670

    Reporting Services

        accounts for, 47–48

        auto-starting in, 56

        command-line options for, 51

        on domain controllers, 42

        final steps in, 63–64

        on IIS servers, 47, 51–64

        licensing in, 50, 63

        log files in, 65–66

        in non-default websites, 64–66

        on one machine, 43–45

        operating system choices in, 39–41

        pathways for, 39–41

        Report Designer, 45–46

        Report Server database selection in,  
58–59

    Sample AdventureWorks2000

        database, 46–47

    samples setup in, 63

    Setup Wizard preparation, 52–53

    SMTP mail configuration in, 60–62

    SSL in, 695–697

    testing, 73–78

    virtual directories in, 56–58, 65

    on web farms, 49–50, 79–82

    web service accounts in, 53–56

sample reports, 132

## 722 Index

SSL on web servers, 651–652, 695–697  
     certificate authorities on domain  
         controllers, 652–654  
     certificates with, 658–659  
     common names in, 657–658,  
         677–678  
     process, 654–656  
 <InstallationID> element, 67, 81–82  
 <InstanceId> element, 67  
 Integer data type, 285  
 Integra tool, 234  
 Integrated Security, 231  
     for Data Sources, 223–234  
     and IF caching, 30–31  
     precautions for, 239  
     security risks with, 91  
 Intermediate Format (IF)  
     caching, 30–32  
     Report Processor for, 29–30  
 Intermediate language (IL), 4  
 Internationalization  
     template settings for, 446  
     Textbox controls for, 338–339  
 Internet Information Services dialog, 672  
 IsDBNull function, 278  
 IsNothing function, 278  
 ISNULL function, 425  
 ISOLATION Level for DataSet  
     transactions, 265  
 Item-level roles, 132, 578–580  
 Item-level security settings, 193–202  
 ItemTasks class, 579  
 IWAM account privileges, 42

### J–K

JET (Joint Engine Technology), query  
     parameters in, 280  
 JIT Debugging dialog, 565  
 Joining tables  
     from different servers, 257  
     with GuiQD, 262–263  
     for Matrix controls, 424

Jump to Report action, 369  
 Jump to URL action, 369  
 Kanatype sensitivity option, 267  
 Key management, 71–72  
 Knowledgebase filters, 707–708

### L

<Label> element for templates, 446  
 Label property, 336  
     for Document Maps, 18  
     for List controls, 367  
 Label Value pairs, 289  
 Labels  
     for chart elements, 408–413  
     for fields, 331, 337  
 Landing zones (LZs) in Chart controls,  
     391–394  
     Category Fields, 395–396  
     Data Fields, 394–395  
     Series Fields, 397  
 Landscape orientation, 324–327  
 Language property  
     for reports, 339, 348  
     in RSReportHost, 21–22  
     in Textbox controls, 338–339  
 Language variable, 329  
 Last run time in rendering reports,  
     173–174  
 Launching Subreports, 383–385  
 Layout, 321–322  
     controls. *See* Controls  
     data binding and Value property in, 322  
     drilldown in, 365–369  
     global variables in, 328–330  
     headers and footers in, 327–328,  
         378–381  
     images, 352–353  
         adding, 355–356  
         BackgroundImage property for,  
             353–354  
         external. *See* External images  
     page sizing in, 324–327

- Product Inventory and Valuation report, 323–324
  - in Report Designer, 11–16
  - in Report wizard, 101
  - Subreports, 381–385
  - Layout tab
    - for Matrix controls, 120–121, 426
    - in Report Designer, 12, 325–326
    - in Report wizard, 105
  - Layout view, 284
  - LEFT OUTER JOINS, 425
  - Legends, 392
  - Less than signs (<) in DataSet filters, 275
  - Level function, 376–377
  - Libraries
    - for Data Processing extensions, 616–617
    - DPAPI, 460
    - for sharing code, 306–314
  - Licensing in installation, 50, 63
  - Lightman, David, 223
  - LIKE operator, 272
  - Line charts, 400
  - Line property, 416
  - Linked reports
    - creating, 197–202
    - Report Manager for, 34
  - List controls, 333–334
    - grouping with, 345–351
    - in Report Designer, 16
    - sorting in, 339–343
  - List Properties dialog, 347
  - ListChildren method, 499, 565–566, 575
  - ListFormatExtensions.rss file, 503
  - Listing
    - report items, 565–569
    - reports with broken Data Sources, 574–576
    - schedules, 572–574
  - ListReportHistory method, 587
  - ListRoles method, 579
  - ListSchedules method, 572–573
  - ListTasks method, 579
  - Literal credentials in SOAP, 561
  - Literals for strings, 331, 337
  - LocalDebug mode, 307
  - Locales
    - in collation sorting, 267–268
    - in currency formatting, 21
  - LocalizedName property
    - EventLogConnection, 623
    - IDbConnection, 619
  - Log files
    - in auditing, 234
    - execution, 214
    - in installation, 65–66
  - LogExplorer tool, 234
  - Login accounts for installation, 48
  - Login credentials and IDs, 55, 665
  - Logos in Report Manager, 526–527
  - LZs (landing zones) in Chart controls, 391–394
    - Category Fields, 395–396
    - Data Fields, 394–395
    - Series Fields, 397
- M**
- machine.config file, 70
  - Manage Reports task, 161–166
  - Manage Reports Task right, 222
  - Manage shared schedules hyperlink, 214
  - Managed reports, 4, 24, 131. *See also*
    - Report Manager
      - caching, 34–35, 167–170
      - execution time limitations for, 174–178
      - exporting, 154–156
      - history properties for, 175–176
      - item-level security settings for, 193–202
      - linked, 197–202
      - searching for, 149–152
      - snapshots for, 170–173
      - subscriptions for. *See* Subscriptions
  - Margins for controls, 330
  - Margins property, 325
  - Marker size property, 410
  - Matrix controls and reports, 112–113, 423



## 724 Index

- alignment in, 120
  - creating, 426–431
  - dates in, 425–426
  - deploying, 129
  - for EventLog reports, 647
  - exporting, 438–440
  - formatting in, 119
  - GreenBars in, 433–436
  - grouping and sorting in, 120–127, 431–433
  - joining tables for, 424
  - performance of, 437–438
  - in Report Designer, 14, 16
  - Report wizard for. *See* Report wizard
  - starting, 424
  - summing columns and rows in, 436–437
  - visibility in, 127–128
  - Matrix Properties dialog, 429
  - <MaxActiveRegForOneUser> element, 69
  - MaxConnections setting, 136, 703–705
  - Maximum values for Report Parameters, 291–292
  - <MaxRetries> element, 193, 699
  - Membership for RSExecRole, 228–229
  - MemoryStream for PictureBox, 601
  - MenuListSecureMethods\_Click method, 558
  - Metabase Editor, 703–705
  - Microsoft Access reports, converting, 380–381
  - Microsoft Samples, Data Processing extensions for, 606–614
  - MimeType parameter in Render, 591
  - MIMETYPE property
    - for external images, 362
    - for image backgrounds, 353
  - Minimum values for Report Parameters, 291–292
  - MinuteRecurrence option, 570
  - MinutesInterval option, 570
  - Mirrored Data Sources, 245–246
  - ModifiedBy property, 567
  - ModifiedDate property, 567
  - Monitoring report processor, 440–441
  - MonthlyDOWRecurrence option, 570
  - MonthlyRecurrence option, 570
  - Mscorcfg.msc file, 491
  - MSDE, 39
  - MSDN Universal, 50
  - Multiple-value select reports, 534–546
  - MultipleSelects1.htm file, 537–538
  - MultipleSelects2.htm file, 541
  - MultipleSelects3.htm file, 541
  - My Reports folder, 211–213
  - My Reports role, 33, 141
  - My Subscriptions link, 180
  - MyReports feature, 243
- ## N
- Name and Security Settings screen, 676
  - Name element, 456
  - Name property
    - for Matrix reports, 124
    - in searches, 567
  - NamedPermissionSets section
    - for Code Access Security, 473–475
    - for Data Processing extensions, 610–611
  - Names
    - certificates, 656
    - DataSet fields, 269
    - groups, 431–433
    - parameters, 283
    - projects, 89
    - reports, 103–104, 249–250
    - roles, 146
    - site, 211
    - in SSL installation, 654, 657–658, 677–678
    - Textbox controls, 330–331
  - Navigation
    - rendering extension parameters for, 505–506
    - in Subreports, 384–385
  - Navigation tab, 384–385
  - .NET assemblies, 17

NetBIOS name in SSL installation, 654,  
657–658, 677–678

New Folder button, 156–157

New Project dialog, 89, 247–248, 592

New reports, 247

- DataSets for. *See* DataSets
- projects for, 247–251
- shared Data Sources for, 251–256

New Role Assignment option, 140, 195

New Snapshot option, 175

New Subscription option, 192

New System Role screen, 208–209

New System Role Assignment screen,  
209–210

NIH (Not Invented Here) syndrome, 336

NoData property, 391

Non-default websites, installation in,  
64–66

Non-string fields in filters, 276–277

NoRepeat property, 354

NoRows property, 415

Not Invented Here (NIH) syndrome, 336

NOT IS NULL clause, 391

Nothing permission sets, 473

NULL values

- for Chart controls, 391
- with filters, 270–272, 276–277
- for Matrix controls, 425

Number of connections, 41–42, 136,  
703–705

Numeric fields in DataSet filters, 276–277

## O

ODBC

- drivers for, 3
- query parameters in, 280

Office Web Components (OWCs)

- exporting Matrix controls to, 438–440
- for managed reports, 155–156

OLE DB, 3, 93

Open architecture, 3

Open method, 622

Operating system choices in installation,  
39–41

Operators in DataSet filters, 274–275

Option Compare Binary setting, 273

Option Compare Text setting, 273

Option Strict directive, 551–552, 592

OPTION values for multiple-value  
selection, 539

Options dialog for templates, 446

or operator in DataSet filters, 278

Oracle query parameters, 280

ORDER BY clause, 407

Organization Information screen, 656,  
676–677

Orientation, page, 324–327

OUTPUT parameters with stored  
procedures, 261, 297–298

Overlapping

- controls, 381
- labels, 412

OverwriteDataSources property, 245

Overwriting reports, 244

OWCs (Office Web Components)

- exporting Matrix controls to, 438–440
- for managed reports, 155–156

## P

Padding property, 362

Page headers and footers

- eliminating, 380
- in report layout, 327–328
- templates for, 450–451
- working with, 378–380

Page\_Load event handler, 594–596

Page Not Found errors, 76

PageFooter section, 16

PageHeader section, 16

PageNumber variable, 328

Pages, sizing, 324–327

PageSize property, 325–327

Palette property, 416

Paper size, 324–327

## 726 Index

- ParameterCollection class, 625–628
- Parameters, 279–280
  - ASP.NET web forms for, 546
  - Cascading, 294–297
  - for custom code functions, 304
  - for Data Processing extensions, 625–628
  - query, 280–283
  - report, 283–284
    - data types for, 285–286
    - defaults for, 290–292
    - prompt strings for, 286–290
    - as proxy controls, 379–380
    - Report Parameters dialog, 284–285
    - rights to, 162–163
    - values for, 286–290
  - in Report Manager, 530–534
  - RETURN and OUTPUT, 297–298
  - in sorting, 341–344
  - for Subreports, 382
  - URL, 500–507
    - passing, 511–513
    - Service Pack 1 for, 517–518
- Parameters class, 625–628, 634
- Parameters dialog, 632
- Parameters interface, 617
- Parameters method, 628
- Parameters property, 625, 633–634
- Parameters tab
  - for DataSets, 282
  - for Subreports, 382
- ParametersUsed parameter, 591
- ParamParserFn.sql function, 535–537
- Parents of Subreports, returning to, 385
- Passwords
  - for Data Processing extensions, 648
  - for Data Sources, 23
  - encryption for, 136, 512
  - for RSExecRole, 229
  - in runtime prompting, 223
  - in SOAP, 561
  - SSL for, 665
  - for subscriptions, 188
  - as URL parameters, 511–513
  - user, 136
- Pasting certificate requests, 686
- PDF, exporting managed reports to, 154–155
- Pending certificate requests, 686–687, 691
- Performance
  - of Matrix controls, 437–438
  - of Report Manager, 133
- Permissions. *See also* Rights
  - for Administrators Group, 139
  - errors in, 76
  - for policy files, 473, 475–479
  - Report Manager for, 33
  - for sample reports, 143–144
  - SQL, 55
  - in style sheets, 471–475
- Permissions class, 471
- <PermissionSet> element, 474
- PermissionSets
  - for Code Access Security, 473–475
  - for Data Processing extensions, 609–610
  - for style sheets, 491
- Persist security info option, 184
- Perspective for 3D charts, 406
- Pickup folder, 700–701
- PictureBox controls, 601–602
- Pictures, 352–353
  - adding to reports, 355–356
  - BackgroundImage property for, 353–354
  - external. *See* External images
- Piddle files, 550
- Pie charts, 400, 405–408
- PivotTables, 156, 423, 439
- PKI (Public Key Infrastructure), 662
- Pling operator (!) in DataSet filters, 274–275
- Plot areas in Chart controls, 416
- Plug In Drawing Does Little Else files, 550
- Plus signs (+)
  - in searches, 149

- in URLs, 499
- Point Labels tab, 410
- Policy files, 69
  - permissions for, 473, 475–479
  - StrongNameMembershipCondition in, 487–488
  - for style sheets, 466–471
- <Polling-Interval> element, 73
- Pooched systems, 508
- Portrait orientation, 324–327
- Post-development folders, 243–244
- Post method, 514
- Potential Scripting Violation warning, 694
- Prefixes in URL addressing, 500–507
- Previewing and Preview tab
  - for expressions, 300
  - for images, 354
  - for Matrix controls, 127–128, 429, 434
  - with referenced assemblies, 307, 310
  - in Report Designer, 19–22
  - in Report wizard, 104, 110, 118–119
  - reports, 317–321
- Primary Key columns in GuiQD JOINS, 262
- Primary parameters in Cascading Parameters, 294
- Printers, grayscales for, 417–418
- Printing
  - Delivery extensions, 28–29
  - server-side, 603–604
- PrintOnFirstPage property, 327
- PrintOnLastPage property, 327
- Private keys in strong naming, 482
- prjBuildSQL.DLL file, 309–310
- prjBuildSQLAssemblyInfo.VB file, 307
- Process a Pending Request screen, 691
- Product Catalog report, 153
- Product Inventory and Valuation report, 323–324
- Production environments, debugging in, 598
- Production folders, 243–244
- profile parameter, 136

- Programmability in Report Designer, 16–18
- Programming Chart controls, 403–405
- Projects
  - creating, 247–251
  - images in, 355
  - names for, 89
- Prompt strings
  - removing, 379–380
  - for Report Parameters, 286–290
- Prompted credentials, 516–517
- Properties and Properties tab
  - accessing, 312–314
  - in assemblies, 17
  - for Data Sources, 238
  - for DataSets, 240
  - in Matrix reports, 121, 126
  - in overwriting reports, 244
  - in Report Manager, 153
  - in Report wizard, 96
- Properties option, 96
- Prototypes for Chart controls, 393
- Proxy controls, 379–380
- Public Key Infrastructure (PKI), 662
- Public keys in strong naming, 482
- PublicKey Blobs, 488
- Publisher evidence, 477
- Publisher role, 33, 141
- PublisherMembershipCondition class, 477
- PublishSampleReports.rss script, 132

## Q

- Queries
  - for certificate requests, 689
  - for DataSets
    - fields for, 268–270
    - options for, 265–268
  - in Report wizard, 94–96, 114–115
- Query Builder, 95–98
- Query designers
  - generic, 258–260
  - GuiQD, 260–263
- Query parameters, 280–283

## 728 Index

QueryString for Data Processing  
extensions, 616

Question marks (?) for query parameters,  
280

### R

rc: prefix in URL addressing, 501, 504–507

rc:DocMapID parameter, 505

rc:EndFind parameter, 506–507

rc:FallbackPage parameter, 506–507

rc:FindString parameter, 506–507

rc:LinkTarget parameter, 506

rc:Parameters parameter, 504, 517–518

rc:Section parameter, 505

rc:StartFind parameter, 506–507

rc:StyleSheet parameters, 517–518

rc:Toolbar parameter, 504

rc:Zoom parameter, 505

<rd:InitialDimension> element, 454

<rd:properties> element, 453

<rd:ReportID> element, 454

RDL (Report Definition Language) files, 4

code for, 22–23

Data Sources in, 90

images in, 355

in linked reports, 34

moving, 246

SOAP for, 583–585

uploading, 160–161

RDL extension, 4

RDS (Report Data Source) files, 23–24, 88

READ COMMITTED isolation level, 265

Ready to Install dialog, 63

Recovering deleted shared Data Sources,  
204–206

Rectangle controls, 346–351

RecurrencePattern class, 569–571

References property, 488

References Collection property, 18

References tab, 310, 313, 469

Refresh button, 165–166

Refresh Fields option, 284

Refreshing documentation, 84

Registering Data extensions, 613–614

Registration Information dialog, 52

Registry keys

for CD keys, 46

for website search, 152

RelativePathName element, 455

Removing

folders, 144–145

Reporting Services, 82–84

snapshots, 176

Renaming parameters, 283

Render command, 499

<render> element, 155

RENDER\_FORMAT column, 189

Render method

input parameters, 590–591

output parameters, 591–600

with sessions, 602–604

for SOAP, 510, 588–589, 597

Rendered reports, 16–17

Rendering extensions

displaying, 19

in Report Designer, 17

in Report Server, 26–27

in URL addressing, 504–507

Rendering HTML, 588–589

Rendering reports, 153–154

caching in, 167–170

Data Sources in, 163–164

with external images, 362

folder management in, 156–157

formats in, 154–156

last run time in, 173–174

Manage Reports task in, 161–166

managed report execution time in,  
174–178

resources in, 157–161

snapshots in, 170–173

with SOAP, 588–589

ASP.NET IFrameless approach,  
600–601

Render method input parameters,  
590–591

- Render method output parameters, 591–600
  - sessions in, 602–604
  - with Windows forms application, 601–602
- RenderStream method, 589, 591
- Repairing deleted Data Sources, 574–578
- Repeat property, 353–354
- RepeatOnNewPage property, 371, 380
- RepeatWith property
  - for headers, 450
  - vs. headers and footers, 380
  - for Table controls, 336–338, 371–372
- RepeatX property, 354
- RepeatY property, 354
- replaceUrl function, 532–533, 545
- Replacing files, 609
- Report Data Source (RDS) files, 23–24, 88
- Report Definition Language (RDL), 4
  - code for, 22–23
  - Data Sources in, 90
  - images in, 355
  - in linked reports, 34
  - moving, 246
  - SOAP for, 583–585
  - uploading, 160–161
- Report definitions, 3
- Report Designer, 3–7
  - control layout in, 11–16
  - Data Sources for, 8
  - DataSets for, 8–11
  - Document Maps in, 18–19
  - installing, 45–46
  - previewing in, 19–22
  - programmability in, 16–18
  - RDL files for, 22–23
  - RDS files for, 23–24
  - Report wizard in. *See* Report wizard
  - stored credentials in, 246
- Report execution timeouts
  - Report Manager for, 34–35
  - setting, 32
  - in Site Settings, 213
- Report Expressions, 468
- Report items
  - in folders, 565–569
  - in Report Designer, 11
- Report Manager, 4–5, 32–33, 131–133, 521–522. *See also* Managed reports
  - ASP.NET web forms for, 546
  - behaviors in, 527–530
  - for caches, 34–35
  - cascading style sheets for, 523–525
  - company logos in, 526–527
  - Data Sources in, 34, 202–207
  - extending, 35–36
  - for folder management, 33–34
  - help for, 35
  - Images folder for, 523
  - for linked reports, 34
  - log file for, 66
  - multiple-value selection in, 534–546
  - parameters area for, 530–534
  - performance of, 133
  - rendering reports in. *See* Rendering reports
  - role-based security in, 132–133
    - users and administrators in, 134
    - viewing reports in, 148–149
    - web browser credentials in, 134–148
  - searching in, 149–152
  - for security permissions, 33
  - for shared Data Sources, 34
  - for shared schedules, 34
  - for site settings. *See* Site Settings
  - for subscriptions. *See* Subscriptions
  - summary, 216–217
  - users and administrators in, 134
- Report parameters, 283–284
  - data types for, 285–286
  - defaults for, 290–292
  - prompt strings for, 286–290
  - as proxy controls, 379–380
  - Report Parameters dialog, 284–285
  - rights to, 162–163
  - in URLs, 513

## 730 Index

- values for, 286–290
- Report Parameters dialog, 284–285, 288, 341–342
- Report Path parameter, 590
- Report Processor
  - characteristics of, 29–30
  - monitoring, 440–441
- Report Project template, 247–248
- Report Project wizard, 6, 87–89, 247. *See also* Report wizard
- Report Properties dialog, 469
- Report.RDL template, 451–453
- Report Scripting Utility (rs.exe), 4, 502–503, 510–511
- Report Server, 5, 24–25
  - for credentials, 224–225
  - database selection for, 58–59
  - Delivery extensions in, 27–29
  - for IF caching, 30–32
  - log files for, 66
  - rendering extensions in, 26–27
  - Report Processor in, 29–30
  - session management for, 507–511
  - Site Settings for, 215
  - Windows service polling in, 72–73
- Report Server Database screen, 225–226, 228
- Report Server Email extension node, 61
- Report wizard, 87, 448
  - for Matrix reports
    - column width in, 118–119
    - control design in, 116
    - control style in, 117
    - Data Sources in, 114
    - final steps, 117–119
    - launching, 113
    - previewing, 118–119
    - query design in, 114–115
    - report type in, 114–115
  - for Table reports
    - aggregates in, 106
    - Application Name properties in, 91–93
    - column formatting in, 107
    - connection string display in, 93
    - Data Sources in, 89–91
    - deploying, 110–112
    - deployment location in, 102–103
    - examining reports in, 104–106
    - group-by fields in, 99–100
    - layout in, 101
    - previewing, 104, 110
    - query design in, 94–96
    - report names in, 103–104
    - report type in, 99–100
    - rowset size in, 96–99
    - sorting and grouping in, 107–110
    - table style in, 101–102
    - testing queries in, 96–98
- ReportFolder variable, 328
- ReportHistorySnapshots array, 587
- Reporting Services, 2
  - data source for, 2–3
  - main components, 3–6
  - versions, 36–37
- Reporting Services Books Online, 45, 707–708
- ReportingService class, 503, 559, 565, 602–603
- ReportingServices.CSS file, 523–524, 531
- ReportingServicesService.exe.config file, 486
- ReportingServicesService.exe service, 29
- ReportingServicesWebServer.dll file, 523
- ReportItems collection
  - for headers and footers, 378–379
  - for style sheets, 461
- ReportName property, 381
- ReportName variable, 328
- <ReportParameters> element, 344
- ReportProjectItems.vmdir file, 454–455, 459
- Reports
  - building from scratch. *See* New reports
  - geometries, 452
  - from Microsoft Access, 380–381



- names for, 103–104
- previewing and deploying, 317–321
- templates for. *See* Templates
- ReportServerTempDB file, 58
- ReportServerUrl variable, 328
- ReportStyleSheetPermission set, 480
- Request File Summary screen, 681
- RequestedFormat parameter, 590
- Resizing external images, 360–362
- Resolving common names, 657
- Resources in rendering reports, 157–161
- Responses for certificate requests, 689
- RETURN parameters, 261, 297–298
- Revert to Parent Security option, 195
- Right margins for controls, 330
- Rights. *See also* Permissions
  - to execution properties, 164–165
  - to report parameters, 162–163
  - to subscriptions, 181–182
- Risks, security
  - for Data Processing extensions, 648–649
  - with integrated security, 91
  - SQL injection, 279
- Role Assignment web page, 148
- Roles and role-based security, 33, 132–133
  - batches for, 581–582
  - item-level, 132, 578–580
  - for managed reports, 195–196
  - Site Settings for, 215
  - site-wide functionality of, 208
  - for user accounts, 139–148
  - users and administrators in, 134
  - viewing reports in, 148–149
  - web browser credentials in, 134–149
- ROLLBACK statement, 232
- Root Certificate Authorities, 654, 662, 666–667
- Rosetta service, 2–3
- Rotation for 3D charts, 406
- RowCount function, 433
- RowNumber function, 335–336
- Rows
  - limiting, 19, 96–99
  - summing, 436–437
- rs: prefix in URL addressing, 501
- rs:ClearSession parameter, 511
- rs:Command parameter, 511
- rs:Commands in URLs, 499–500
- rs.CreateReportHistorySnapshot method, 585–586
- rs:DocMap parameter, 504
- rs.exe (Report Scripting Utility), 4, 502–503, 510–511
- rs:Format parameter, 501–503
- rs.GetReportDefinition method, 583–584
- rs:ParameterLanguage parameter, 517–518
- rs:SessionID parameter, 511
- rs:Snapshot parameter, 504
- rsactivate.exe program, 70–71
- rsconfig.exe program
  - for credentials, 72
  - for RSExecRole, 229
  - for Unattended Execution Account, 357
- RSDocRefresh.msi file, 84
- <RSEmailDPConfiguration> element, 699
- RSExecRole
  - creating, 225–227
  - membership for, 228–229
- rskeymgmt.exe program, 71–72
- rsmgrpolicy.config file, 466
- RSPreviewHost.exe file, 642–643
- rspreviewpolicy.config file, 466
  - for CodeGroups, 478–479, 612
  - for NamedPermissionSets, 473–474, 490
- RSReportDesigner.config file, 69
  - for caching, 320
  - for Data Processing extensions, 643–644
- RSReportHost utility, 20–22, 318–319, 470–471
- RSReportServer.config file, 67
  - contents of, 61–63

## 732 Index

- for Data Processing extensions, 613, 642–643
- methods in, 558
- for SMTP, 700
- for SSL, 68, 696
- for subscription delivery, 193
- RSSETUPACCOUNT option, 48–49
- RSSETUPPASSWORD options, 48–49
- RSsrvcpolicy.config file, 466
  - for CodeGroups, 492, 611–612
  - for Data Processing extensions, 641–642
  - for NamedPermissionSets, 490, 610–611
- RSStp\_.cab file, 65
- RSstrongNameStyleSheet assembly, 488
- RSstylesheet.dll file, 467–469
- <RSTrace> element, 66
- RSWebApplication.config file, 63
  - contents of, 68
  - for help link, 145
  - for SSL, 696
  - for subscription delivery, 192
- Run As dialog, 671–672
- RunAs.exe shortcuts, 135
- RunningRequestsDbCycle setting, 32
- RunningValue function, 306
  - for lists, 335–336
  - in Matrix controls, 433–436
- Runtime prompting for Data Sources, 223–224
- Runtime trace log files, 66

## S

- Sales People report, 165, 170–173
- Sample reports and databases
  - installing, 46–47, 53, 63, 132
  - permissions for, 143–144
- SampleReports folder, 201
- SampleReports project, 74–78
- savecred parameter, 135–136
- Scaling in Chart controls, 414
- Scatter charts, 400, 419–423

- Scheduled Jobs
  - managing, 72–73
  - in uninstallation, 83
- ScheduleDefinition class, 571–572
- ScheduleID property, 573
- Schedules, 569
  - issues with, 571–572
  - listing, 572–574
  - RecurrencePatterns for, 569–571
  - shared
    - Report Manager for, 34
    - Site Settings, 214–215
  - snapshot, expiration date for, 172–173
  - for subscriptions, 190–191
- Search feature on websites, adding, 151–152
- SearchCondition class, 567–568
- Searches.htm file, 158–160
- Searching
  - in Knowledgebase, 707–708
  - rendering extension parameters for, 506–507
  - in Report Manager, 149–152
- SearchUrl key, 152
- Secondary parameters in Cascading Parameters, 294
- <SecondsBeforeRetry> element, 193
- Secure methods in SOAP, 558–561
- Secure Sockets Layer (SSL), 651
  - certificates for, 661–662
    - CAs for. *See* Certificate Authorities (CAs)
    - IIS certificate wizard for, 654–658
    - issues with, 658–659
    - obtaining, 666–667, 670–693
    - for web servers, 40, 43–44, 670–693
  - configuration files for, 68, 696–697
  - importance of, 57–58, 663
  - for Reporting Services, 40, 43–44, 663–665, 695–697
  - on web servers, 651–652, 695–697
    - Certificate Authorities on domain controllers, 652–654

- certificates with, 658–659
  - common names in, 657–658, 677–678
  - process, 654–656
  - working with, 665
- SecureConnectionLevel, 63
- Security, 1, 219–220
  - code access. *See* Code access security (CAS)
  - credentials. *See* Credentials
  - for Data Processing extensions, 648–649
  - for Data Sources, 225–228
    - auditing, 234
    - credentials stored for, 224–225
    - integrated security for, 230–233
    - RSExecRole membership, 228–229
    - runtime prompting, 223–224
    - shared, 203–204
    - TLS, 233–234
  - integrated, 231
    - for Data Sources, 223–234
    - and IF caching, 30–31
    - precautions for, 239
    - security risks with, 91
  - for managed reports, item-level, 193–202
  - motivation for, 220–221
  - in Report Designer, 17–18
  - role-based. *See* Roles and role-based security
  - with SQL injection, 279
  - SSL. *See* Secure Sockets Layer (SSL)
  - summary, 234–235
  - Trojan reports, 221–222
- Security Alert Dialog, 666
- Security logins, 229
- SELECT statements in Trojan reports, 222
- Select the Data Source screen, 90, 96, 114
- Select the Number of Snapshots to Keep option, 178
- Select the Report Type screen, 99–100, 115
- SelectCommand for DataSets, 240
- SemiTransparent shading, 418–419
- Send the request immediately option, 675
- <SendUsing> element, 700
- Series Fields in Landing Zones, 397
- Server Certificate screen, 674
- <Server> element, 151–152
- Server-side printing, 603–604
- Servers
  - with IIS, installation on, 47, 51–64
  - joining tables from, 257
  - operating systems for, 41
  - web. *See* Web servers, SSL installation on
- Service Account dialog, 53–56
- Service Oriented Architecture Protocol. *See* SOAP (Service Oriented Architecture Protocol)
- Service Pack 1 (SP1)
  - for chart elements, 413
  - installing, 85
  - for URL addressing, 517–518
- SessionData tables, 510
- SessionID property, 602–604
- SessionID variable, 508–510
- SessionIDs in URLs, 602
- Sessions
  - for Report Servers, 507–511
  - in SOAP, 602–604
- Set security, 193–194
- SetConfiguration method, 619, 622–623, 643
- SetPolicies method, 581
- SetRoleProperties method, 579
- Setup program, 51
  - for installation, 43–44
  - preparation of, 52–53
  - for SSL, 663–664
- Shading for Chart controls, 418–419
- Shared code, libraries for, 306–314

## 734 Index

- Shared credentials (SSPI)
  - for Data Sources, 223–234
  - and IF caching, 30–31
  - precautions for, 239
  - security risks with, 91
- Shared Data Source dialog, 254–255, 614
- Shared Data Sources, 23
  - characteristics, 206–207
  - creating, 245, 251–256
  - deleted, recovering, 204–206
  - Report Manager for, 34
  - security concerns for, 203–204
- Shared functions for images, 364–365
- Shared schedules
  - Report Manager for, 34
  - Site Settings for, 214–215
- Shortcuts for RunAs.exe, 135
- Show Details option, 143, 157
- Show Details view, 230
- ShowHideToggle parameter, 591
- Single transactions for DataSets, 263–265
- Site evidence, 477
- Site Settings, 207–210
  - for execution logging, 214
  - for history snapshot limits, 213
  - My Reports folder for, 211–213
  - names, 211
  - for report execution timeouts, 213
  - for roles and report server security, 215
  - for shared schedules, 214–215
- Site Settings hyperlink, 207–210
- Site-wide Roles and Tasks, 208
- SiteMembershipCondition class, 477
- Size
  - external images, 360–362
  - pages, 324–327
  - rendering extension parameters for, 505
- Sizing property, 361–362
- Slashes (/) in URLs, 499
- SMTP configuration, 60–62, 699–700
  - in installation, 60–62
  - Pickup folder, 700–701
  - warnings for, 700–701
- <SMTPConnectionTimeout> element, 699
- <SMTPServerPickupDirectory> element, 700–701
- <SMTPServerPort> element, 699
- <SMTPUseSSL> element, 699
- sn.exe program, 487–488
- SnagIt processor, 360
- Snapping controls to grid, 331
- Snapshots
  - deleting, 176
  - history limits for, 213
  - IF for, 30–31
  - for managed reports, 170–173
  - Report Manager for, 34–35
  - SOAP for, 585–587
  - sorting, 343–345
  - in URLs, 504
- SOAP (Service Oriented Architecture Protocol), 4, 25, 549–550
  - for batches for roles, 581–582
  - exception handling in, 562–565
  - for history, 585–587
  - item-level role definitions in, 578–580
  - listing report items in, 565–569
  - Option Strict for, 551–552
  - for RDL files, 583–585
  - rendering reports with, 588–589
    - ASP.NET IFrameless approach, 600–601
    - Render method input parameters, 590–591
    - Render method output parameters, 591–600
    - sessions in, 602–604
    - with Windows forms application, 601–602
  - for repairing deleted Data Sources, 574–578
  - for Report Manager, 521–522
  - for schedules, 569–574
  - secure methods in, 558–561
  - server-side printing in, 603–604

- sessions in, 602–604
- SSL for, 665
- support for, 26
- web references for, 552–558
- <soap:addresslocation> attribute, 556
- SoapException class, 585
- Solution Configuration setting, 20
- Solution Explorer, 248–249
- Sorting
  - DataSets, 266–268
  - in List controls, 339–343
  - in Matrix reports, 120–127, 431–433
  - in Report wizard, 107–110
  - in Snapshots and Historical reports, 343–345
- SortPriority element, 456
- Source files, HTML, 496
- Source property for images, 353, 355
- Sources, data. *See* Data Sources
- sp\_OACreate stored procedure, 73
- SP1 (Service Pack 1)
  - for chart elements, 413
  - installing, 85
  - for URL addressing, 517–518
- Space characters in URLs, 499
- Split method, 493
- SQL Authentication, 55
- SQL injection, 279, 534–535
- SQL Login credentials, 55, 225
- SQL Profiler traces, 507–508
- SQL queries
  - Command text, 239
  - dynamic
    - custom code functions for, 301–306
    - executing, 298–301
- SQL Server Agent, 171
  - for Report Server, 29
  - for Scheduled Jobs, 72–73
  - in uninstallation, 84
- SQL Server in installation, 58, 79–80
- SQL Server Service Manager, 171
- SQLExpress, 39
- src attribute, IFRAMES, 545
- SSL. *See* Secure Sockets Layer (SSL)
- SSL option, 695
- SSPI security
  - for Data Sources, 223–234
  - and IF caching, 30–31
  - precautions for, 239
  - security risks with, 91
- Staging folders, 243–244
- Stand-alone certificate authorities, 693–695
- Standard Edition, 37
- StartDateTime property, 570, 572
- State property, 624
- Status of certificate requests, 688
- Stock charts, 400, 413–415
- Store All Report Execution Snapshots in History option, 177–178
- Stored credentials
  - for Data Processing extensions, 648–649
  - in Report Designer, 246
- Stored procedures
  - DataSets from, 241
  - generic query designer for, 259–260
  - GuiQD for, 261
  - parameters for, 281
- StoredProcedure Command type, 259
- Storing credentials, 72
- StreamID class, 589
- StreamIds parameter, 591
- <StreamRoot> parameter, 596–597
- String data type and fields
  - in DataSet filters, 272
  - for Report Parameters, 285
- StrongName evidence, 476, 482–484
- StrongName membership condition, 482
- StrongNameMembershipCondition class, 476, 487–488
- Style, Matrix control, 117
- Style Builder dialog, 525–526
- Style Properties dialog
  - for Chart controls, 416–417
  - for labels, 412–413

## 736 Index

- Style sheets. *See* Cascading style sheets (CSSs)
  - <StyleSheet> parameter, 597
  - StyleSheet.rdl report, 481
  - StyleSheet.xml file, 488
  - <StyleStream> parameter, 596–597
  - <StyleTemplate> element, 447
  - StyleTemplate.xml file, 490
  - StyleTemplates.xml file, 445–446, 448–449
  - Submitting function, 540
  - Subreport Properties dialog, 382
  - Subreports, 381–382
    - hiding and launching, 383–385
    - in Report Designer, 16
  - Subscriptions, 5, 178–179
    - data-driven, 35, 182–191
    - delivery extension configuration issues
      - in, 192–193
    - individual, 179–181
    - rights to, 181–182
    - in uninstallation, 84
  - SubType property, 399–400
  - Sum function
    - in bound controls, 332
    - for bubble charts, 421
    - in Report wizard, 106
  - Summing in Matrix controls, 436–437
  - Syntax in URL addressing, 500–507
  - System Administrator tasks, 208
  - System.CodeDom, 17
  - <system.diagnostics> element, 66
  - System.Diagnostics namespace, 637
  - System-level roles, 132
  - System Roles web page, 208
  - System User tasks, 208
- T**
- T-SQL
    - in Report wizard, 94
    - for Trojan reports, 230
  - Table-based queries, GuiQD for, 260–261
  - Table controls, 335, 369–372
    - customizing and annotating, 372–374
    - recursive data structure handling in, 374–377
    - in Report Designer, 16
    - Report wizard for. *See* Report wizard
  - Table Properties dialog, 109
  - Table style, 101–102
  - TableDirect Command type, 259
  - Tables, joining
    - from different servers, 257
    - with GuiQD, 262–263
    - for Matrix controls, 424
  - Tabular Data Stream (TDS), 246
  - TargetServerURL property, 20, 318–319, 697
  - Tasks
    - for roles, 579–580
    - in security, 33
    - site-wide functionality of, 208
    - in Web browser credentials, 145–148
  - TCP/IP addresses for common names, 657
  - TDS (Tabular Data Stream), 246
  - Templates
    - base name element, 458–459
    - building, 444–449
    - clsid element, 456
    - customizing, 451–455
    - DataSource, 460
    - Description element, 456–457
    - Flags element, 458
    - for gradient fills, 448–449
    - for headers and footers, 450–451
    - IconDll element, 457
    - IconResId element, 458
    - Name element, 456
    - RelativePathName element, 455
    - selecting, 249–250
    - SortPriority element, 456
  - Temporary containers, 346–351
  - Testing
    - functions, 307
    - installation, 73–78
    - for NULL values, 278
    - queries, 96–98

- TestReports folder, 156–157
  - TestUser account, 131
  - <Testuser> element, 135
  - TextAlign property, 120
  - Textbox controls
    - binding data to, 331–332
    - creating, 329–330
    - for currency and internationalization, 338–339
    - editing, 331
    - gradient fills for, 448–449
    - images in, 354
    - names, 330–331
    - snapping to grid, 331
    - Value property, 327, 329
  - Textbox Properties dialog, 431
  - Thawte CA, 666
  - 3D Effect tab, 406–407
  - Timeouts
    - IIS, 705
    - report execution, 213
    - for Report Server sessions, 508
  - TLS (Transport Layer Security)
    - encryption, 225
    - for Data Sources, 233–234
    - for stored credentials, 246
  - Today function, 301
  - ToggleItem property, 368, 383
  - TOP expression, 96–99
  - Top N operator, 275
  - TotalPages variable, 328
  - Trace log files, 66
  - <Transaction> element, 264–265
  - Transaction interface for Data Processing
    - extensions, 617
  - Transaction logs, 234
  - Transaction property, 635
  - Transactions for DataSets, 263–265
  - Transforming images, 364–365
  - Transparency
    - of Chart controls, 416
    - of Table controls, 373
  - Transport Layer Security (TLS), 225
    - for Data Sources, 233–234
    - for stored credentials, 246
  - Trojan reports, 17
    - characteristics, 221–222
    - and integrated security, 230–231
  - TRUNCATE TABLE statements, 222
  - Trusted connections, 48
  - Tuned reports, deploying, 244
  - Tuning, configuration files for. *See* Configuration files
  - Type property, 399–400
- ## U
- Unattended Execution Account
    - credentials, 357
  - Uninstalling Reporting Services, 82–84
  - UNION statement, 305
  - Update Service for root Certificate
    - Authorities, 654
  - Url evidence, 476, 478–482
  - URL Membership condition, 482
  - URL Request Strings, 496
  - URL variable, 559
  - UrlMembershipCondition class, 476, 491
  - URLs, 495–496
    - commands in, 499–500
    - drilling, 150–151
    - HTTP postback in, 513–517
    - https:// prefix, 663
    - passwords in, 511–513
    - for Report Manager, 33
    - for Report Server, 496–499
    - Service Pack 1 for, 517–518
    - sessions in, 507–511
    - syntax and parameter prefixes in, 500–507
  - Use as Windows credentials when
    - connecting to the data source option, 168
  - Use method, 489, 493
  - Use Single Transaction option, 263–264



**738 Index**

Use SSL option, 57, 663–664  
 Use the Following Schedule to Add  
     Snapshot to Report History option,  
     178  
 <UsedInQuery> element, 344–345  
 User-enabled fields, 360  
 User IDs for Data Sources, 23  
 User interface for Chart controls, 391–398  
 User names  
     in runtime prompting, 223  
     in SOAP, 561  
     in subscriptions, 188  
 UserID variable, 329  
 Users and user accounts  
     in Administrators Group, 211–213  
     credentials for, 23  
     history rights to, 177–178  
     roles for, 134, 139–145

**V**

Values and Value property, 464  
     in bubble charts, 421  
     in DataSet filters, 273–274, 276  
     for images, 353, 363, 365  
     in report layout, 322  
     for Report Parameters, 286–292  
     with ReportItems, 378–379  
     for strings, 337  
     in Textbox control, 327, 329, 338  
 Values tab, 421  
 Variables, global, 328–330  
 Verisign CA, 654, 666  
 Versions  
     binding to, 485–486  
     Reporting Services, 36–37  
 Vertical rotation for 3D charts, 406  
 View folders task, 146  
 View tab  
     for linked managed reports, 202  
     in Report Manager, 153–154  
 Viewing  
     reports in role-based security, 148–149  
     resources in rendering reports, 160–161

Views for external images, 357–358  
 Virtual directories, 56–58, 65  
 Visibility Attribute, 128  
 Visibility in Matrix reports, 127–128  
 Visibility tab, 127–128  
 Visible attribute, 155  
 Visible report areas, 504–505  
 Visual control layout, 11–16  
 Visual SourceSafe, 246

**W**

WAP (Wireless Application Protocol), 27  
 Warning class, 584–585  
 Warnings parameter, 591  
 Web browsers  
     credentials for, 134–139  
         assigning roles to user accounts,  
         139–148  
     roles and tasks in, 145–148  
     languages for, 339  
     for previewing reports, 319  
 Web Certificate Wizard, 674  
 web.config file, 486  
 Web farms, installation on, 49–50, 79–82  
 Web images. *See* External images  
 Web references for SOAP, 552–558  
 Web Server Certificate Wizard, 673–674,  
     690  
 Web servers, SSL installation on, 651–652,  
     695–697  
     certificate authorities on domain  
         controllers, 652–654  
     certificates with, 658–659, 670–693  
     common names in, 657–658, 677–678  
     process, 654–656  
 Web service accounts, installing, 53–56  
 Web site certificates, 664  
 Websites, adding search to, 151–152  
 WeeklyRecurrence option, 570  
 Whizzdle files, 550  
 Width  
     in collation sorting, 267  
     columns, 118–119

- pages, 325–327
- Width option, 267
- Width property, 325–327
- Wildcard characters
  - in DataSet filters, 272
  - in searches, 149, 151
- Windows 2000 best practices, 59
- Windows Collation Sorting Styles, 265–266
- Windows Components Wizard, 668–670
- Windows Domain Credentials, 55
- Windows forms applications, rendering
  - with, 601–602
- Windows Integrated security (SSPI)
  - for Data Sources, 223–234
  - and IF caching, 30–31
  - precautions for, 239
  - security risks with, 91
- Windows Server 2003 best practices, 59
- Windows service
  - executing, 54
  - polling, 72–73
- Windows XP
  - best practices for, 59
  - concurrent connections in, 41–42, 136, 703–705

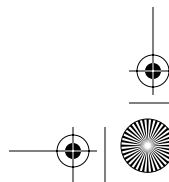
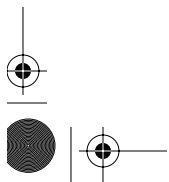
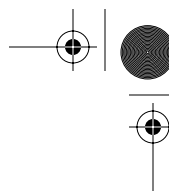
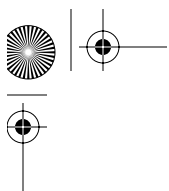
- Wireless Application Protocol (WAP), 27
- Worker Process, 54
- Workstations
  - Data Sources for, 244–246
  - deployment folders for, 242–244
  - operating systems for, 41
- Write method, 594, 601
- WRITEMODE column, 189
- WSDL files, 550, 555–556

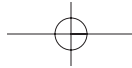
## **X**

- X-axes in Chart controls, 392–393, 398
- XML format and files
  - vs. policy files, 70
  - for RDL, 22
- XSD schema, 22
- XSLT (Extensible Stylesheet Language Transformations), 27

## **Y–Z**

- Y-axes in Chart controls, 393, 398
- Your Site's Common Name screen, 678
- Yukon service, 2–3
- Zone evidence, 477
- ZoneMembershipCondition class, 477





# informIT

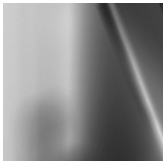
[www.informit.com](http://www.informit.com)

## YOUR GUIDE TO IT REFERENCE



### Articles

Keep your edge with thousands of free articles, in-depth features, interviews, and IT reference recommendations – all written by experts you know and trust.



### Online Books

Answers in an instant from **InformIT Online Book's** 600+ fully searchable on line books. For a limited time, you can get your first 14 days **free**.

POWERED BY  
**Safari**  
TECH BOOKS ONLINE™



### Catalog

Review online sample chapters, author biographies and customer rankings and choose exactly the right book from a selection of over 5,000 titles.



Wouldn't it be great  
if the world's leading technical  
publishers joined forces to deliver  
their best tech books in a common  
digital reference platform?

They have. Introducing  
**InformIT Online Books**  
powered by Safari.

POWERED BY  
**Safari**  
TECH BOOKS ONLINE

■ **Specific answers to specific questions.**

InformIT Online Books' powerful search engine gives you relevance-ranked results in a matter of seconds.

■ **Immediate results.**

With InformIT Online Books, you can select the book you want and view the chapter or section you need immediately.

■ **Cut, paste and annotate.**

Paste code to save time and eliminate typographical errors. Make notes on the material you find useful and choose whether or not to share them with your work group.

■ **Customized for your enterprise.**

Customize a library for you, your department or your entire organization. You only pay for what you need.

**Get your first 14 days FREE!**

For a limited time, InformIT Online Books is offering its members a 10 book subscription risk-free for 14 days. Visit <http://www.informit.com/online-books> for details.

**informIT**  
**Online Books**

**informit.com/onlinebooks**



# Register Your Book

at [www.awprofessional.com/register](http://www.awprofessional.com/register)

You may be eligible to receive:

- Advance notice of forthcoming editions of the book
- Related book recommendations
- Chapter excerpts and supplements of forthcoming titles
- Information about special contests and promotions throughout the year
- Notices and reminders about author appearances, tradeshows, and online chats with special guests

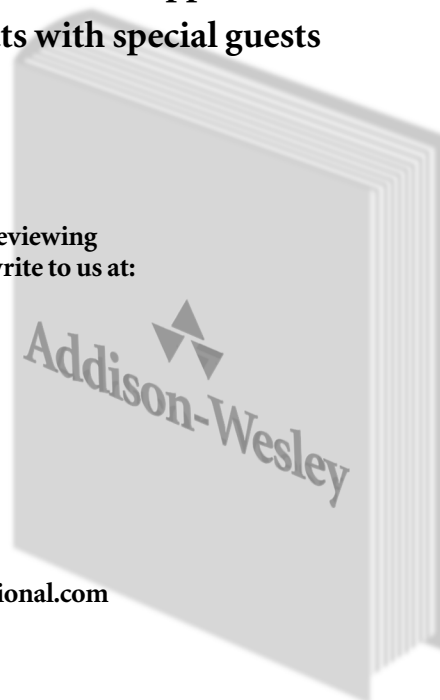


## Contact us

If you are interested in writing a book or reviewing manuscripts prior to publication, please write to us at:

Editorial Department  
Addison-Wesley Professional  
75 Arlington Street, Suite 300  
Boston, MA 02116 USA  
Email: [AWPro@aw.com](mailto:AWPro@aw.com)

Visit us on the Web: <http://www.awprofessional.com>



# DVD-ROM Warranty

Addison-Wesley warrants the enclosed DVD-ROM to be free of defects in materials and faulty workmanship under normal use for a period of ninety days after purchase (when purchased new). If a defect is discovered in the DVD-ROM during this warranty period, a replacement DVD-ROM can be obtained at no charge by sending the defective DVD-ROM, postage prepaid, with proof of purchase to:

Disc Exchange  
Addison-Wesley Professional  
Pearson Technology Group  
75 Arlington Street, Suite 300  
Boston, MA 02116  
Email: [AWPro@aw.com](mailto:AWPro@aw.com)

Addison-Wesley makes no warranty or representation, either expressed or implied, with respect to this software, its quality, performance, merchantability, or fitness for a particular purpose. In no event will Addison-Wesley, its distributors, or dealers be liable for direct, indirect, special, incidental, or consequential damages arising out of the use or inability to use the software. The exclusion of implied warranties is not permitted in some states. Therefore, the above exclusion may not apply to you. This warranty provides you with specific legal rights. There may be other rights that you may have that vary from state to state. The contents of this DVD-ROM are intended for personal use only.

More information and updates are available at:

<http://www.awprofessional.com/>  
<http://www.sqlreportingservices.net/>