

Lightroom Classic CC and Lightroom CC August 2018 update

This August Adobe have updated Lightroom Classic CC 7.5 and Lightroom CC. The Lightroom Classic CC release includes new book layouts and paper options you can choose from when working in the Book module. There is also the ability to edit photo cells in Book module and save these as new Page layouts. Plus, you can now easily import older presets and profiles into Lightroom Classic CC.

Lightroom CC for desktop allows you to select albums to browse photos offline, for those times when you suspect the Internet connection where you are heading to be slow or non-existent. Lightroom CC for mobile users will benefit from new organizational and selection features plus depth map support for more recent iPhone model cameras.

BOOK MODULE UPDATES

A number of improvements have been made to the Book module, which give you access to the newest Blurb book styles as well as more control over your book layout designs.

BOOK SETTINGS PANEL

The Book Settings panel (**Figure 1**) features new Blurb book styles that include a Layflat paper type for Blurb Photo books plus the new Blurb Magazines, and Blurb Trade Books styles. Photo books created using Layflat paper have seamless spreads. This opens up the available design options for centre-spread layouts. When using Standard Layflat, the minimum page count is 33 pages. This is due to the binding requirements. The Magazine format can be used to create high-end magazines with a semi-gloss cover or velvet finish paper. Trade Books meanwhile, offer an affordable, alternative book format.

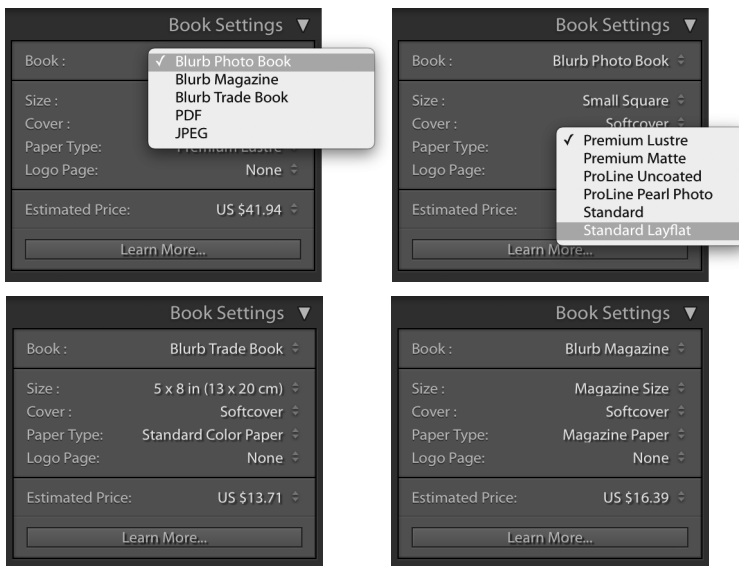


Figure 1 The Book Settings panel new layout options.

PAGE PANEL

You can now select where page numbers are printed on a book, including on only left or right pages, or on all pages. To do this, go to the Page panel (**Figure 2**) and check the Page Numbers box. From the Location menu you can choose where the page numbers should appear in the page layout. Below that is the Display menu where you can choose to have numbers displayed on both pages or left pages or right pages only.

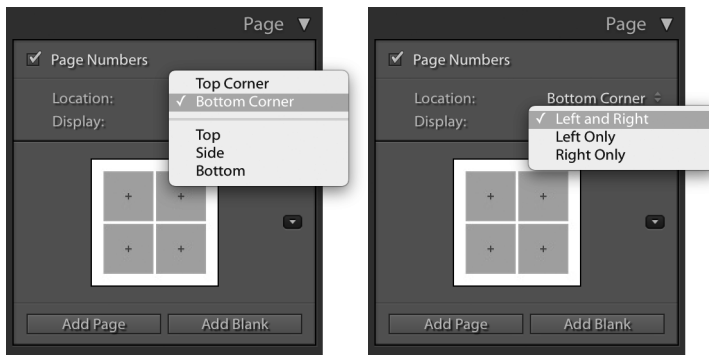
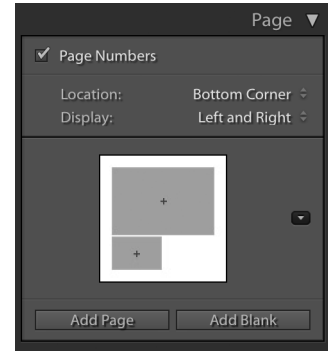
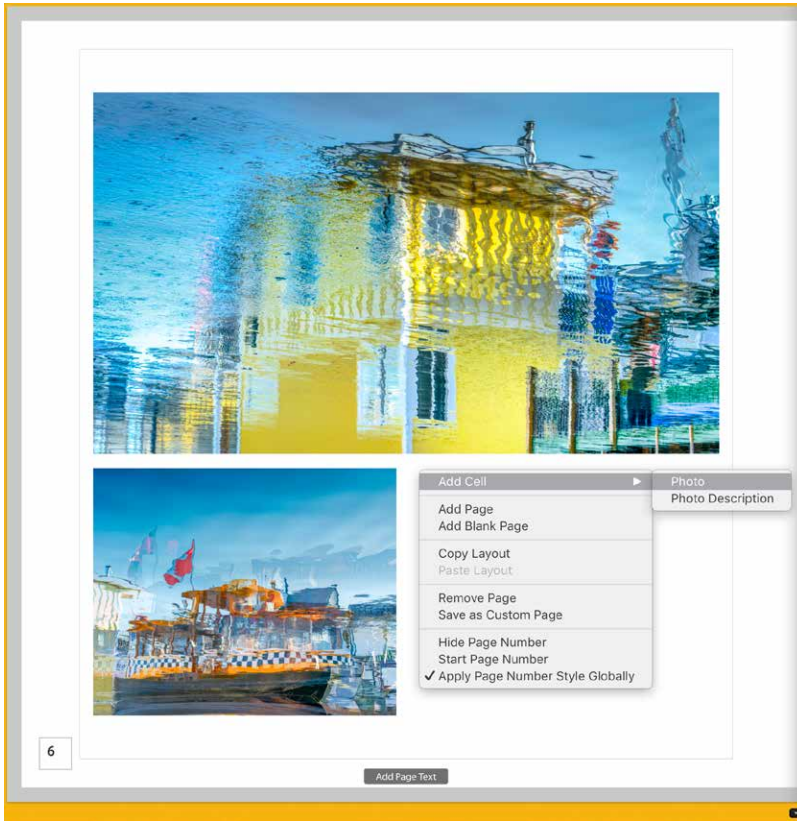


Figure 2 The new Page panel new options.

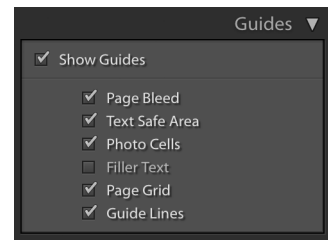
CUSTOMIZING THE PAGE CELLS

You can now refine the layout with custom-sized cells within a page layout. These can be any size you want and not restricted by the standard padding. You can add multiple cells to a page layout, move them to the front or back and place a cell exactly where you want it. When you have finished editing a layout you can save this as a custom page layout setting.

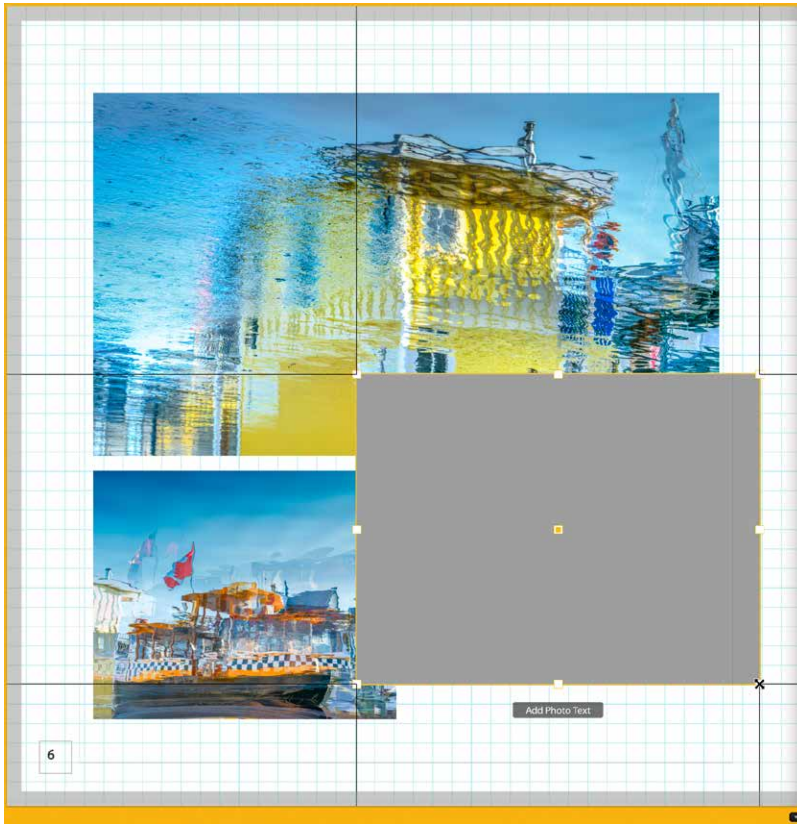
To add a new cell to a page, go to a full page view and select a page layout. Right-click anywhere on the page and choose Add Cell ⇌ Photo or Photo Description from the context menu. To resize a cell, click on the cell to activate it. Then click on the square icon in the centre of the bounding box and drag to reposition it. Or, you can hold down the **Alt** key and use the keyboard arrow keys to move a selected cell. To adjust the size of a cell, drag one of the corner handles of the bounding box. You can arrange the placement of a cell by sending it forward or backward on a layout. Select a cell, right-click and choose one of the Send to Back or Bring To Front options from the context menu. Lastly, you can use the same context menu to save the edited layout as a custom page.



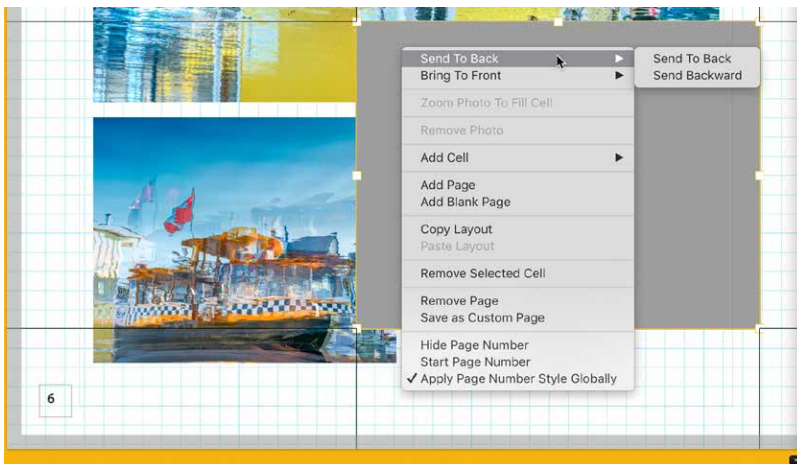
1. To add a new photo cell to a Book page layout, right-click and choose Add Cell ⇒ Photo from the context menu (here I chose to add a Photo cell).



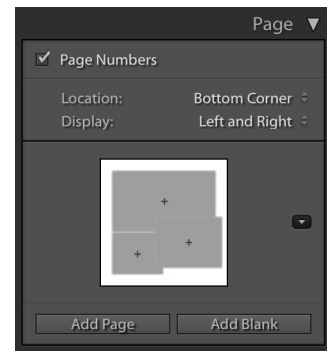
2. To move the added cell, click to activate the cell, click the square in the centre and drag to reposition. It can help to have the Page Grid and Guide Lines selected in the Guides panel as you do this.



3. To resize a cell, click and drag any of the corner handles.



4. To adjust the arrangement of the cell, click to select a cell. Next, right-click to access the context menu and choose to send either backwards or forwards. You can also use this menu to choose “Save as Custom Page” and save the new layout.



IMPORT PRESETS AND PROFILES

You can import a zip archive of presets and profiles, provided the zip archive contains XMP presets, XMP profiles, DCP profiles and LCP profiles. To do this the presets and profiles you wish to import must first be archived as a zip file.

To carry out an import you can go to the File menu and choose File ⇒ Import Develop Profiles and Presets. This can be used to import both presets and profiles. To import profiles only, go to the Basic panel Profile Browser (**Figure 3**), click the plus (+) icon at the upper-left corner and choose Import Profiles from the menu. To import new presets only, go to the Presets panel (**Figure 4**), click the plus (+) icon at the upper-right corner and choose Import Presets from the menu. In each case, when the import dialog that appears, select the .zip archive containing profiles and presets you want to import. Lightroom will then automatically place the presets and profiles in the correct locations on your system.

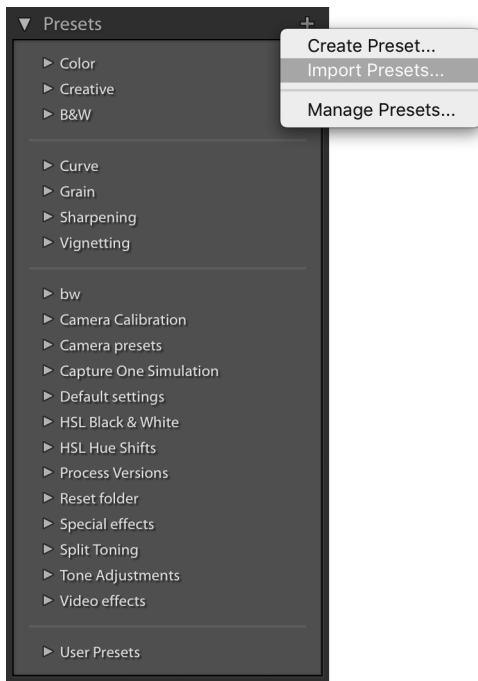


Figure 4 The Presets panel Import Presets menu.

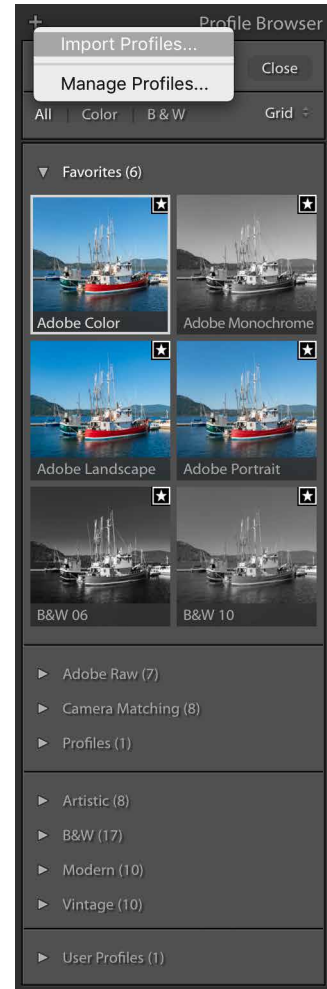


Figure 3 The Profile Browser Import Profiles menu.

HEIC IMAGE FILES SUPPORT ON WINDOWS

Lightroom Classic CC now supports Apple's HEIC image file format on Windows 10.

LIGHTROOM CC FOR DESKTOP

OFFLINE EDITING FOR ALBUMS

The Album context menu has a “Store Album Locally” setting (see **Figure 5**). This ensures original copies of the album’s photos are stored locally on your computer. It is most useful if you are running Lightroom CC for Desktop on a laptop computer while travelling and you are unsure if the bandwidth in your hotel room will be sufficient, or you are about to hop on a plane for a long journey.

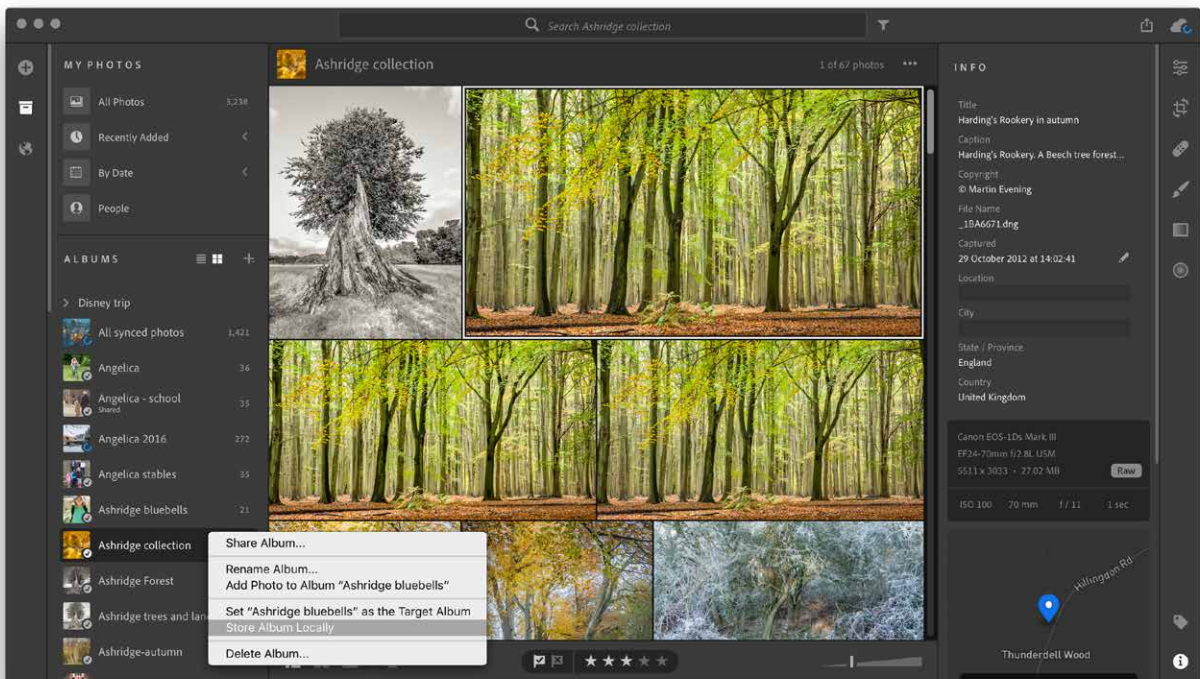


Figure 5 The Lightroom CC for Desktop Albums context menu, which includes “Store Album Locally”.

ALBUM VIEW IN THE INFO PANEL

The Info panel in Lightroom CC for Desktop now has an Albums section at the bottom, which can be used to see which albums a particular photo belongs to (highlighted in **Figure 6**). As you work in Lightroom CC you are likely to share photos across more than one album. This new addition lets you locate other albums more easily.

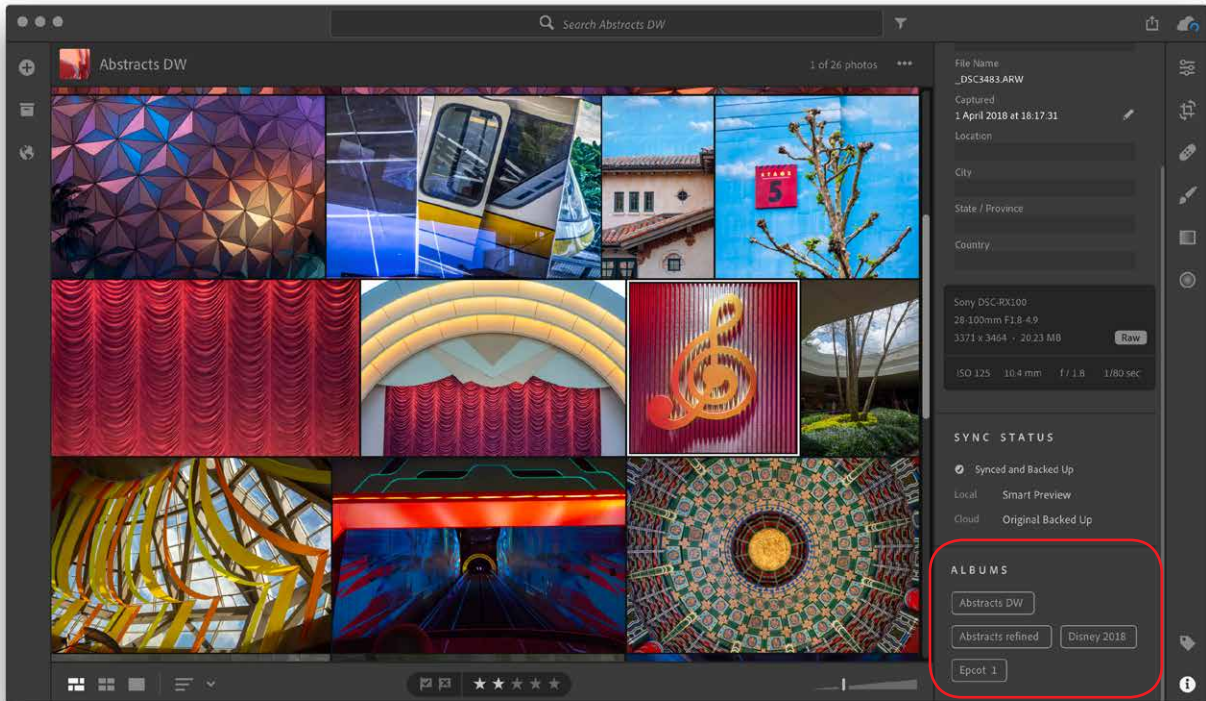


Figure 6 *The Lightroom CC for Desktop Info panel Albums section.*

LIGHTROOM CC MOBILE

IOS

This release of Lightroom CC for iOS has a number of new organizational features. First off, two new smart folders (Lr Camera Photos and Recently Added) have been included (see **Figure 7**). The Shared Albums tab (**Figure 8**) filter displays all the albums you currently shared on lightroom.adobe.com.

Multi-selecting photos

A long tap on a photo thumbnail followed by a drag, is a new gesture that can be used when making a multi-selection of photos (see **Figure 9**). It's important you lift your finger briefly after making the long tap before tapping or dragging to add more photos to a selection.

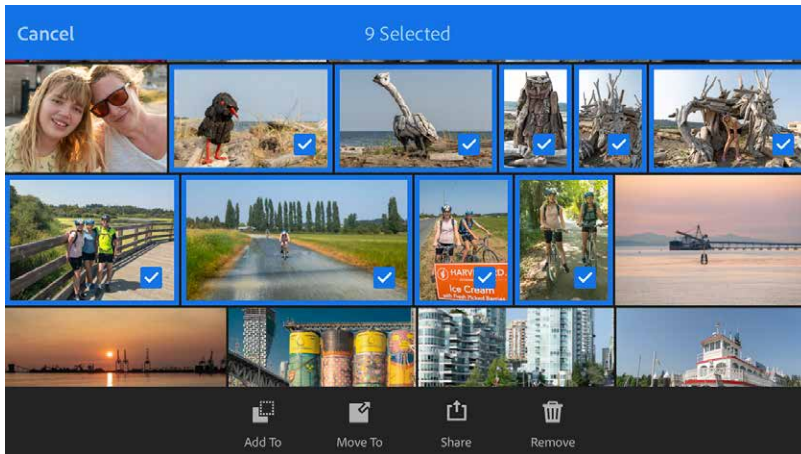


Figure 9 Multi-selecting photos in Lightroom CC for iOS.

HDR and long exposure photos

HDR and long exposure photos captured using the Lightroom CC Camera are now more compact. They are typically less than half the previous files size, but without any loss in visual quality. Consequently, they will take up less space on your device and less time to upload.

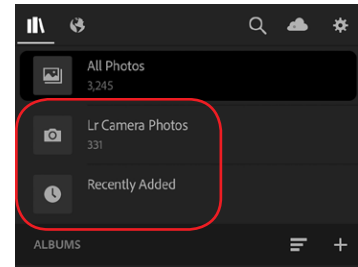


Figure 7 The new Lightroom CC for iOS Camera Photos and Recently Added Smart Folders.

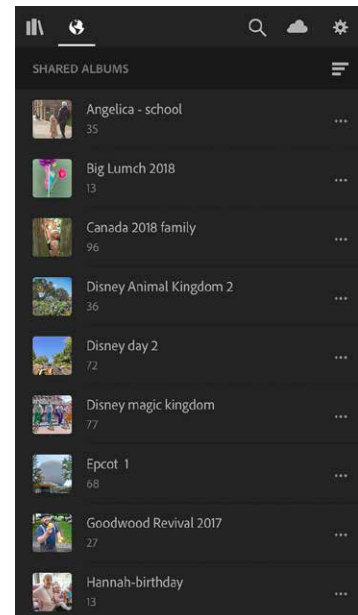


Figure 8 The Shared Albums tab.

Filter menu updates

The Filter menu (**Figure 10**) has been updated. You can now filter your photos by Media type, Camera, Location, Keywords, and whether or not the photo has been edited yet in Lightroom CC.

Depth Map Support

The iPhone 7 Plus, iPhone 8 or iPhone X are capable of capturing HEIC files with depth maps. If you go to the Lightroom CC for iOS settings ⇒ Technology Previews section, you can enable the Lightroom camera (or other capture apps) to capture photos with depth maps. A new Depth selection tool can be used to turn a depth map into a selection that can be modified with a brush. Having done that you can edit the selection just like a normal brush selection and modify the Edit settings. There is now also support for the HEIC format on Android devices.

Guided tutorials

Don't forget the new Guided Tutorials that can also be accessed via the Lightroom CC for mobile Settings ⇒ Help & Support section (see **Figure 12**). Here you can find a number of tutorials that will help you learn how to work with Lightroom CC for mobile. Included here is now a tutorial on how to apply watermarks to photos exported from your device.

ANDROID

Android users will see that Lightroom CC for Android has an Optics editing section with the ability to “Remove Chromatic Aberration” and “Enable lens Corrections”. You can also pause and resume synchronization within the Lightroom Cloud status tab (see **Figure 11**).

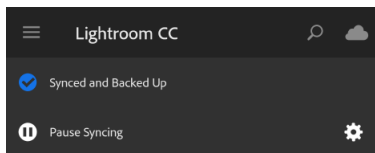


Figure 11 *Lightroom Cloud Status view on Android.*

BEST PHOTOS

The Best Photos feature, which was first available on lightroom.adobe.com, is now available as a technology preview on Android. The Best Photos feature combines Adobe's AI technology along with edits you have made to your photos to quickly create a recommended selection of the best photos within a selected album.

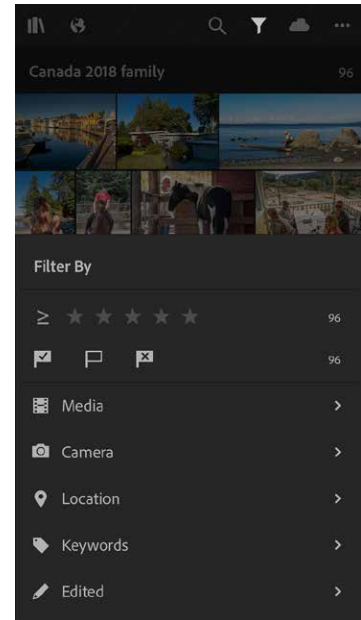


Figure 10 *The Filter menu.*

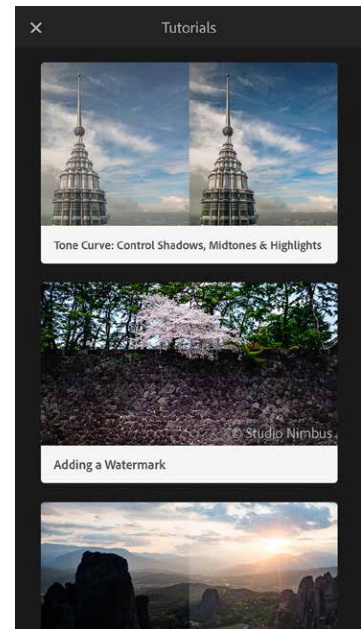


Figure 12 *Guided Tutorials on Lightroom CC for mobile.*

THE ADOBE® PHOTOSHOP® LIGHTROOM® CLASSIC CC BOOK

Includes Lightroom CC/Lightroom mobile



The Adobe Photoshop Lightroom Classic CC Book by Martin Evening

752 pages + Website with videos and free downloads

www.thelightroombook.com

Published by **Adobe Press**

All copyright © Martin Evening