

Lightroom Classic CC and Lightroom CC June 2018 Updates

This June Adobe have updated Lightroom Classic CC 7.4 and Lightroom CC 1.4. This release includes user interface refinements to aid folder management in Lightroom Classic CC, support for the HEIF format, the ability to auto stack photo merge results. Plus, the ability to manage presets and profiles in Lightroom Classic CC. You can now sync profiles and presets with Lightroom CC, create custom presets, plus copy and paste Edit settings. Also, you can read about two new technology previews available in Lightroom CC.

Folder Search Performance Improvements

Folder search performance has been improved in Lightroom Classic CC 7.4. This has been achieved by Adobe reworking the Folder Search algorithm and also includes support for non-English unicode characters. In my experience, folder searching was not particularly slow in previous versions of Lightroom. Lightroom could find the folder I was searching for within a few seconds. Now though searches are pretty much instantaneous and it feels more robust and reliable.

Catalog folder files

As a consequence of the new folder search feature, if you inspect the Lightroom Catalog folder (**Figure 1**) you will notice a new database file, *Lightroomname.helper.Irdata* that sits alongside the *Lightroomname.Ircat* catalog and *Lightroomname_Previews.Irdata* files. This file remains after application is closed. It contains folder search data and is sort of a persistent cache for folder search optimization. The file isn't very big in size and doesn't require a backup. Each time you launch Lightroom, Lightroom checks to see if there is a *helper.Irdata* file and, if missing, creates a new one.

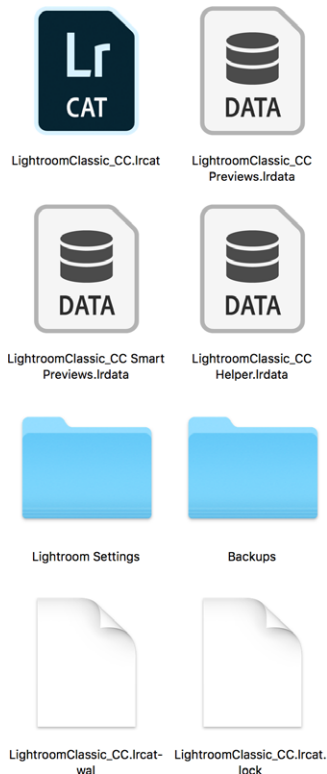


Figure 1 The Lightroom Catalog folder files.

Color Labels for Folders

You can now apply Color Labels to the Folders and filter the color labeled Folders just as you can filter Favorite Folders via the Folders panel Filter bar.

To apply a color label to a folder, right mouse-click on a folder name in the Folders panel to open the context menu. Navigate to “Add Color Label” and select a color from the menu (see **Figure 2**). To remove a color label, select “None” from the “Add Color Label” menu.

To filter by colored folders, click on the magnifying glass in the Folders panel Filter bar and select “Labeled Folders” (see **Figure 3**).

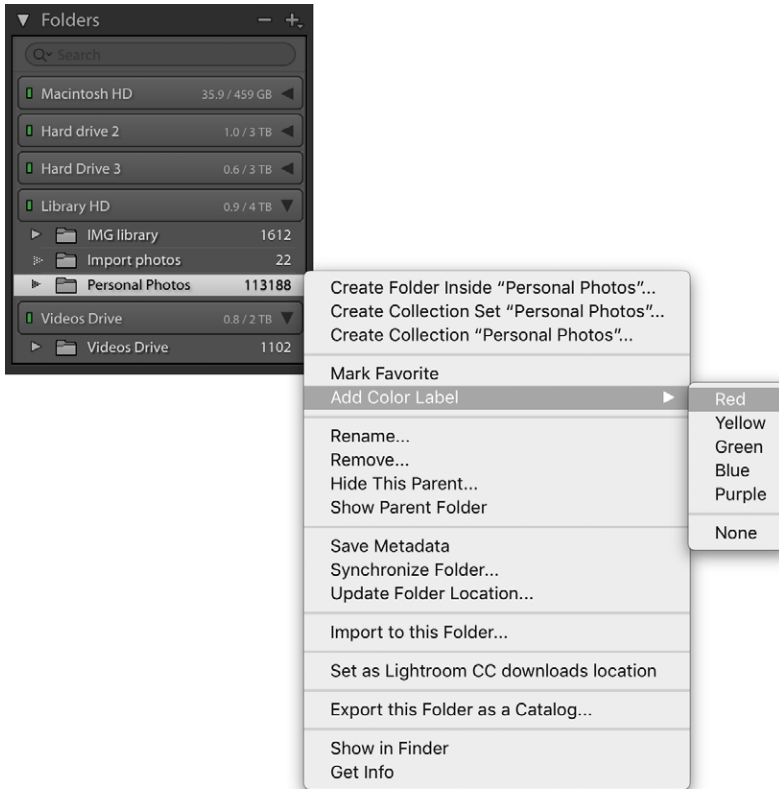


Figure 2 The Folders panel Context menu and the color label options.

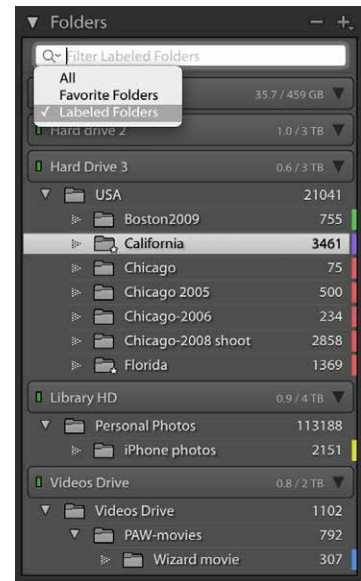


Figure 3 The Folders panel Filter bar pop-up menu with ‘Labeled Folders’ selected.

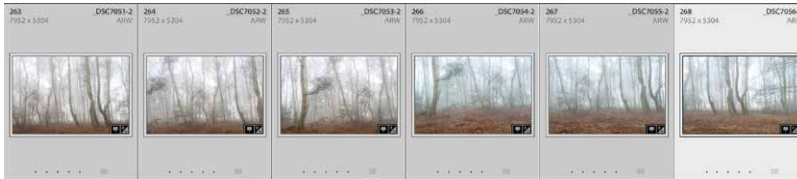
HEIF Support

The High Efficiency Image Format (HEIF) was recently adopted by Apple for iPhone photos captured using devices updated to iOS11. HEIC is the name Apple have given this new format, which is actually more of a container for photos and audio. The chief advantage is that HEIC offers better file compression and can therefore store image files more efficiently than JPEG. The new format also supports 16-bit, which for some captures may result in less banding.

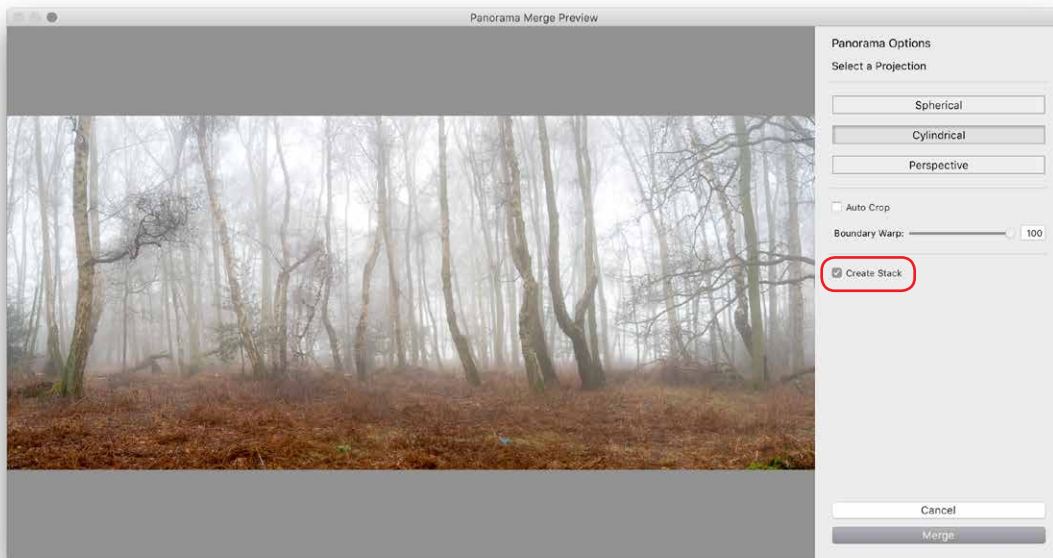
Essentially, HEIC files are treated more as output-referred (like JPEG, TIFF, etc) rather than scene-referred (raw) files. Having said that, Lightroom does treat HEIC files differently to JPEGs or TIFFs. For a start, Lightroom caches the image data from the HEIC files in the negative cache, because decompressing a HEIC file can otherwise be very slow. Without this cache, navigating through HEIC image files would be noticeably laggy. Normally, user edits made to a JPEGs or TIFFs are written to XMP which is then embedded inside the JPEG/TIFF container. However, at present Lightroom is blocked from writing data into HEIC files (you can read from an HEIC image, but you can't write to it). Therefore, since there is no way to embed XMP settings into a HEIC, Lightroom has to add XMP sidecars files instead. If you open an HEIC in Lightroom, adjust the Develop settings and hit Done, Lightroom will add a sidecar (just like it would when editing a native raw file).

Auto Stack Merge results

Whenever you carry out a Photo Merge HDR or Panorama there is now an option to Auto Stack the Merge Operation result alongside the input images. All are automatically stacked together and the merged image will be the first image of the stack.

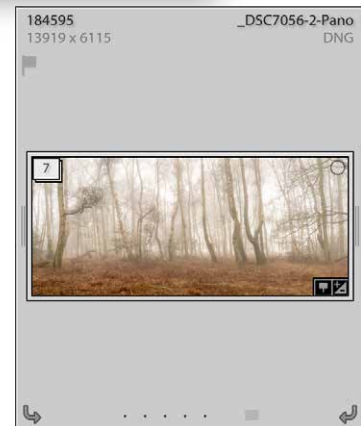


1. Here, I selected six photos from the Library Grid view to create a panorama.



2. I went to the Photo menu and chose Photo Merge ⇒ Panorama (Ctrl M). In the Panorama Merge Preview dialog I checked the Create Stack option (circled).

3. I clicked Merge to apply the Photo Merge panorama to the selected photographs. When the panorama processing was complete this created a closed stacked group in the Library module with the merged image as the top thumbnail in the stack.



Presets and Profiles Managers

You can now choose to hide Presets or Profile sets. This means you can customize the user interface so you only see the Presets or Profiles sets that are relevant to you. Once hidden, the Presets or Profiles sets will no longer appear in the Presets panel or Profile Browser, or other places where Develop Presets might appear, such as in the Import interface.

Managing Profiles

To manage Profile sets, open the Profile Browser, right-click on any Profile set name (such as Favorites) and select the Manage Profiles option. A list of all the Profile sets will then appear in the Manage Profiles dialog. Uncheck the ones you wish to hide (see **Figure 4**). Note that you can hide any except for the Favorites profiles. You can also choose to Expand All or Collapse All Profile sets from the Profile Browser context menu.

Managing Presets

To manage Presets sets, click on the '+' icon at the top of the Presets panel and select Manage Presets. This opens the Manage Presets dialog shown in **Figure 5**. To restore hidden presets you can go to the Manage Presets dialog again via the Presets panel popup menu. Or, you can right-click on any Preset set name and select the Reset Hidden Presets option.

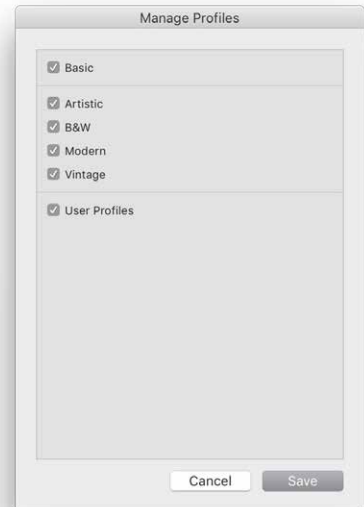
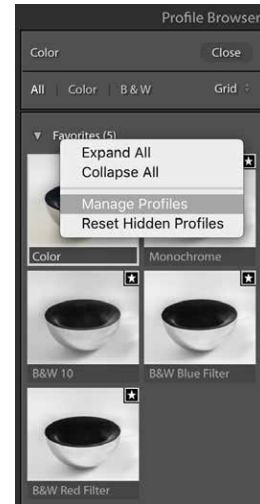


Figure 4 The Profile Browser context menu and Manage Profiles dialog (below).

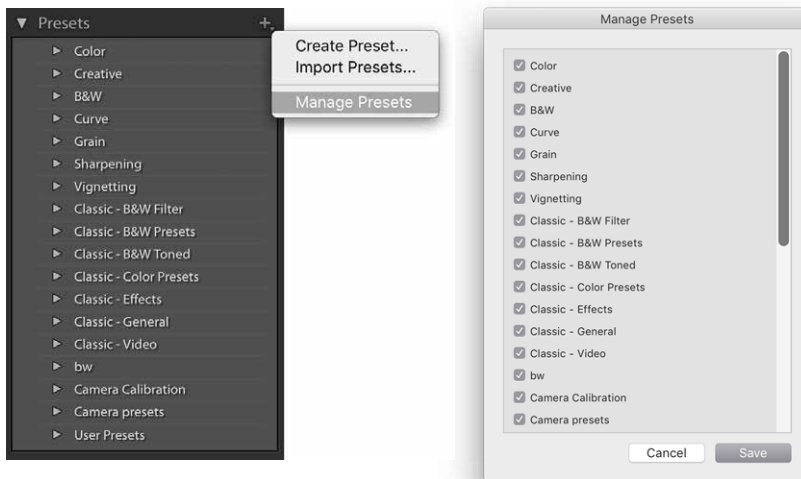


Figure 5 The Presets pop-up menu and Manage Presets dialog (right).

Disabling hover previews for Presets

There is a new preference in the Performance tab section: “Enable hover preview of presets in Loupe” (highlighted in **Figure 6** below). This lets you turn off the Preset Preview while hovering in the Develop module Loupe view (although the preview will still update in the Navigator panel). This user preference only controls the Presets hover preview behavior. Whenever you open the Profile Browser, Lightroom always previews the profile effect on hovering. However, you can always press the **[Alt]** key to temporarily turn off the profile preview. This lets you do a quick before and after comparison of a profile effect without having to move the mouse.

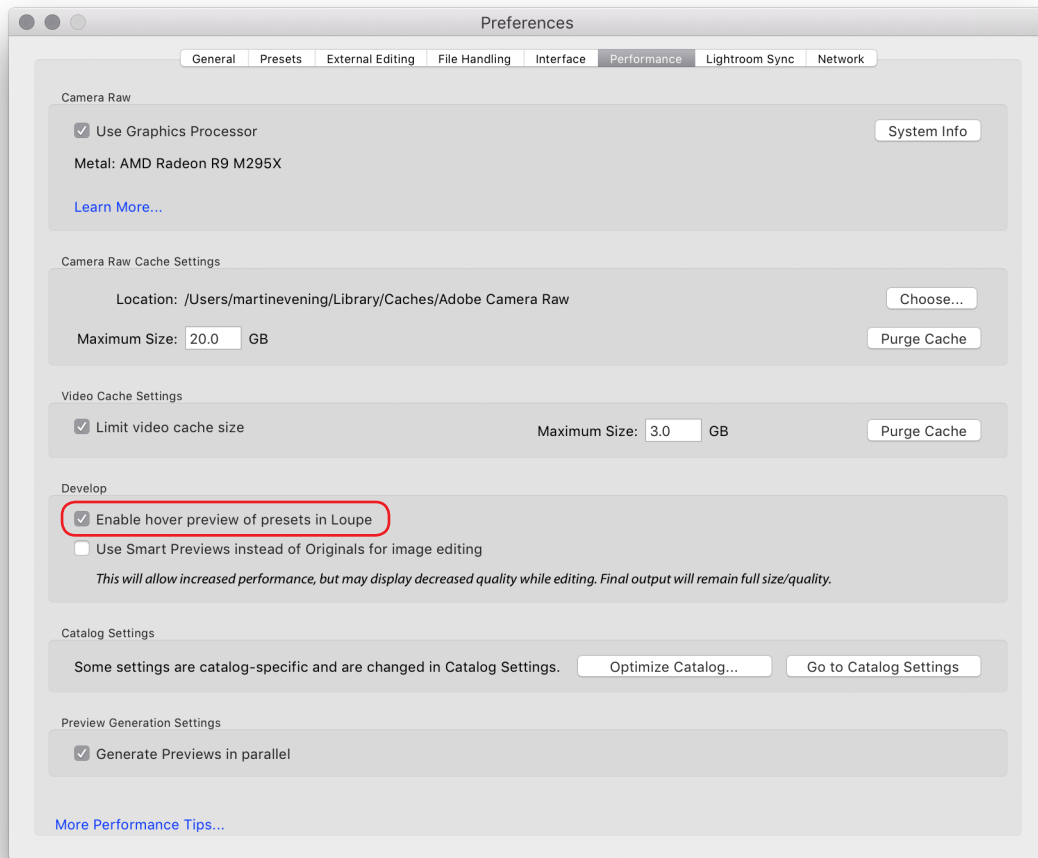


Figure 6 The Lightroom Preferences Performance tab section.

Lightroom CC update

Lightroom CC profiles and Presets syncing

Lightroom CC is now able to synchronize both presets and profiles, including custom-created presets and third-party presets and profiles. You can also create presets on your mobile devices and have these synced across Lightroom CC via the Creative Cloud, just as you can sync your photos.

If you are installing Lightroom CC for desktop for the first time, the existing Lightroom Classic CC profiles and presets on your computer should automatically migrate to Lightroom CC. Otherwise, you'll need to manually import your presets and profiles from Lightroom Classic CC to Lightroom CC. To do this, launch Lightroom CC for desktop. Go to the File menu and choose Import Profiles & Presets. In the Import dialog, browse to find the presets that you wish to select and import.

Sync presets using the following directory path:

Win: C:\ProgramData\Adobe\CameraRaw\Settings

Mac: Username/Library/ Application Support/ Adobe/CameraRaw/Settings

Sync profiles using the following directory path:

Win: C:\ProgramData\Adobe\CameraRaw\CameraProfiles

Mac: username/Library/ Application Support/ Adobe/Camera Raw /Camera Profiles

Once the presets and profiles have been imported and allowed to sync you should see these synced across all other devices running Lightroom CC. Be warned that depending on your Internet connection, it may take up to few hours for these to all appear synced.

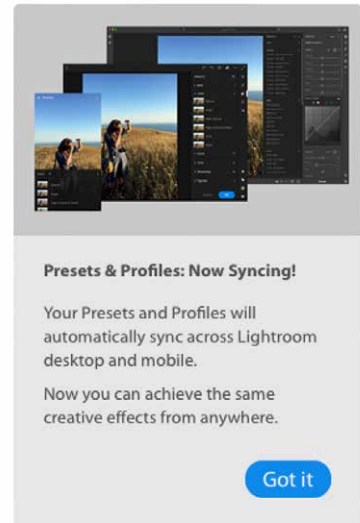


Figure 7 The above Presets and Profiles syncing dialog indicates presets and profiles are syncing automatically.

Batch copy and paste settings

In Lightroom CC for desktop you can now copy Develop settings from one image and paste them to multiple images at once.

Go to the Lightroom CC Photo menu and choose Copy Settings (**⌘C** [Mac] **Ctrl** **C** [PC]). This copies the Develop edit settings from the current selected image based on the options selected in the Copy Settings dialog (see **Figure 8**). To paste, select the image or images you wish to apply the settings to and choose Photo ⇒ Paste Settings (**⌘V** [Mac] **Ctrl** **V** [PC]).

By default the Copy Settings excludes copying tools, lens corrections and geometry settings. To precisely select which settings you wish to copy (and set as the new default), go to Photo ⇒ Choose Edit Settings to Copy (**⌘Shift** **C** [Mac] **Ctrl** **Shift** **C** [PC]). This opens the dialog shown in Figure 8, where you can check the settings as desired.

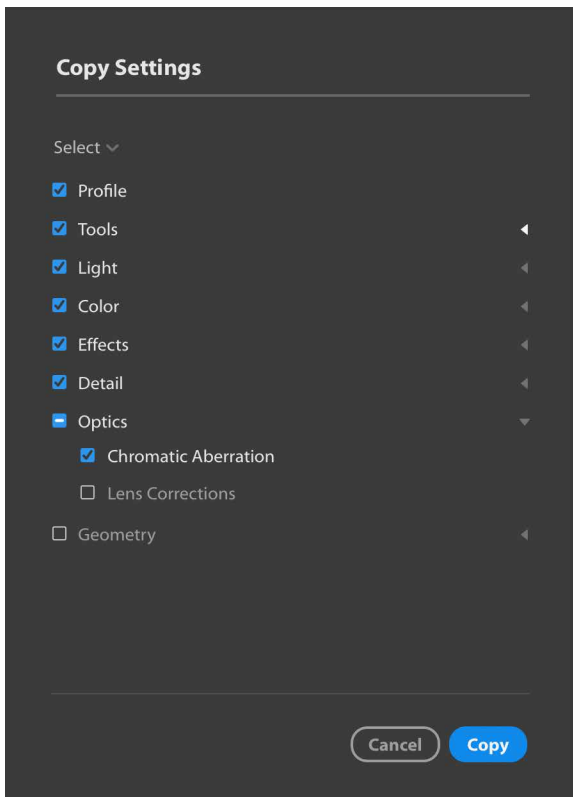


Figure 8 *The Copy Settings dialog.*

Creating presets in Lightroom CC for mobile

Similarly, you can now also create and manage presets via Lightroom CC for mobile. To create a new preset tap on the three dots highlighted in **Figure 9**. Next, tap on Create Preset at the bottom. This opens the New Preset panel where you can name the new preset, choose which group to save it to and check the items you wish to include in the preset.

To manage presets, tap on the Manage Presets button shown in Figure 9. This opens the Manage Presets panel shown in **Figure 10**, where you can check which preset groups you wish to remain visible in Lightroom CC for mobile.

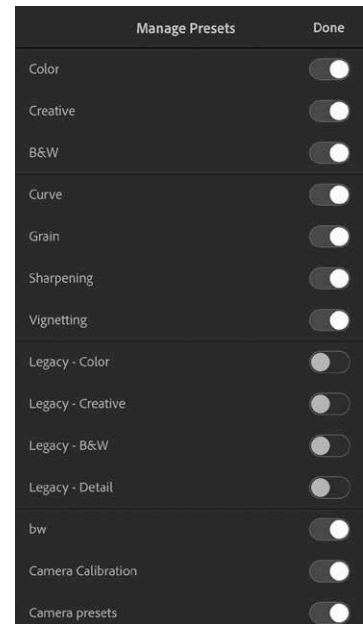
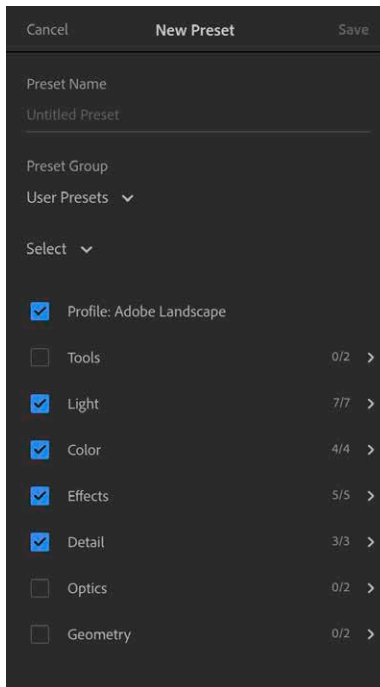
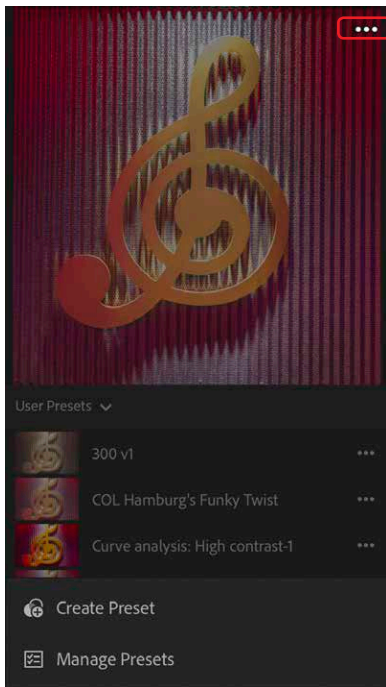


Figure 10 The Manage Presets panel.

Figure 9 The Presets options (left) and New Preset panel (right).

Enhanced Album Sharing to Lightroom online

Lightroom CC now also lets you share your images directly through lightroom.adobe.com. Plus you are also given more control over what options are available for the albums you share directly via Lightroom CC.

To share an album, navigate to the Album list on the left, right-click on the album you wish to share, and select Share Album. This opens the Shared Album dialog (see **Figure 11**). Here you can copy the link to share the album link with others. You can decide whether to allow people to download images and whether to include metadata and show location information. You can modify the options at any time. This includes shared albums/collections previously created via Lightroom Classic CC.

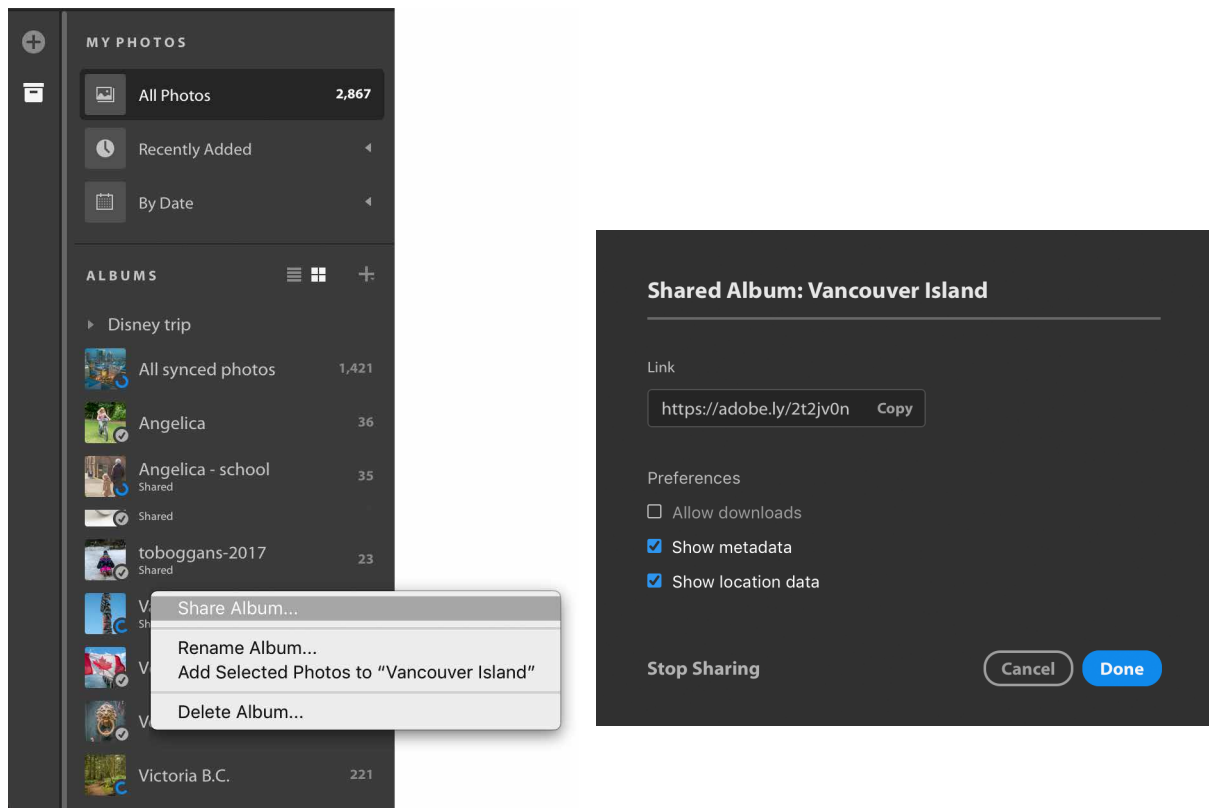


Figure 11 The Albums list showing the context menu (left) and Shared Album dialog (right).

Healing brush (iOS only)

iPhone and iPad iOS users can access the new Healing brush tool when working in the Edit mode. **Figure 12** shows the Healing brush in action. Select the Healing brush tool and simply tap, or tap and drag over the area you wish to repair. Lightroom CC then automatically selects a source area to clone from. To scroll the image, remember to use a two finger gesture to navigate. Otherwise, a single tap adds a new target healing spot.

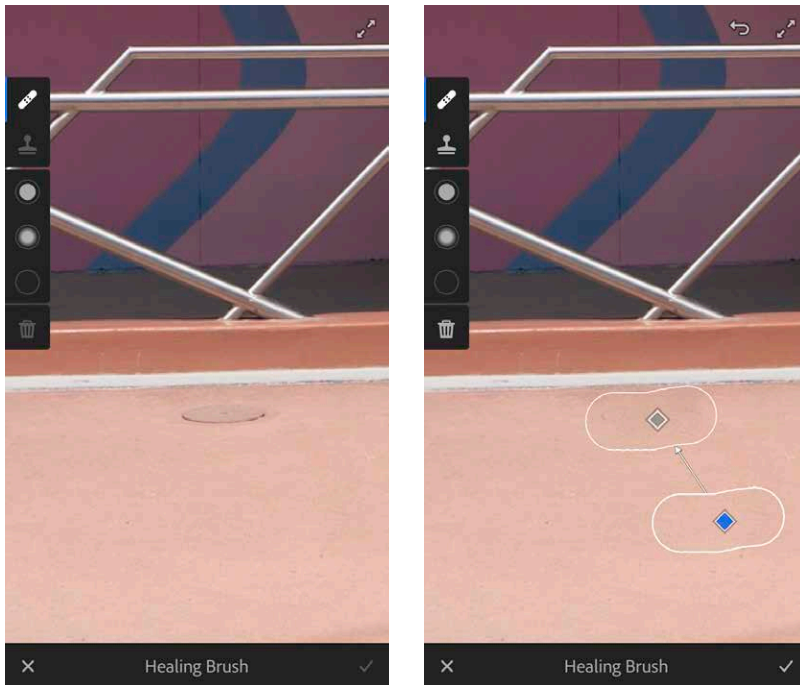


Figure 12 The Healing brush in Lightroom CC for iOS mobile in action (before (left) and after (right)).

Remove Chromatic aberrations

The Edit mode Optics menu now includes a Remove Chromatic Aberration option. This automatically removes lateral chromatic aberration, which is the green/purple fringing that may sometimes be seen towards the edges of a photo, particularly along high contrast edges. **Figure 13** shows a typical example of lateral chromatic aberration in the top image, which can easily be removed by enabling the Remove Chromatic Aberration option.

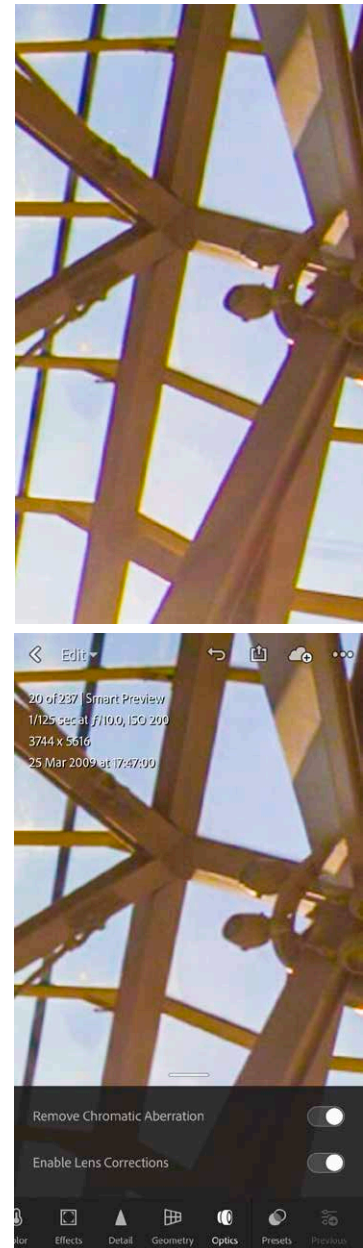


Figure 13 Removing chromatic aberration. Before (top), after (below).

Technology Previews

Tapping on the Lr icon in the top left corner opens the Lightroom CC for mobile settings panel. Among these is the Technology Previews at the bottom. Tap on this to access the Technology Previews panel shown in **Figure 14**.

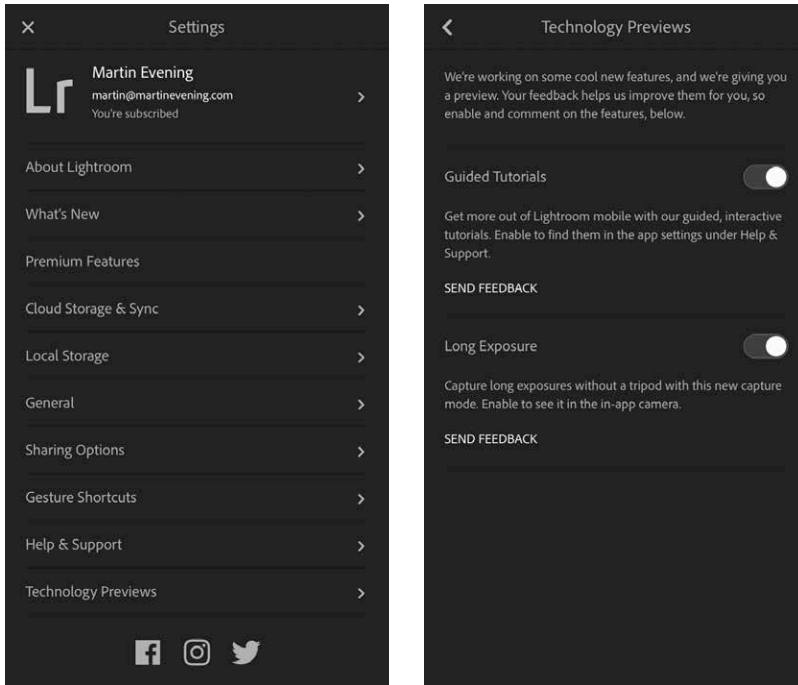


Figure 14 The Lightroom Settings panel (left) and Technology Previews options (right).

Guided Tutorials

In the Technology Previews panel you can enable Guided Tutorials. Doing so makes these accessible via the Help & Support settings (see **Figure 15**). This presents a menu of tutorials. Select a tutorial and this will then guide you to select one of your own photos and follow the programmed steps to discover how to use some of the Edit tools and options in Lightroom CC for mobile.

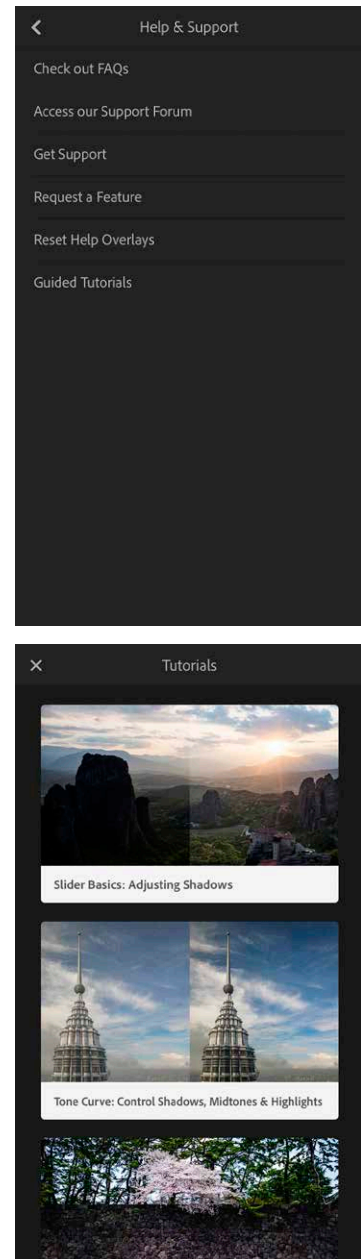


Figure 15 The Help & Support settings (top) and Tutorials (below).

Long Exposure

The Long Exposure option adds a Long Exposure shooting mode to the Lightroom CC for mobile camera settings shown in **Figure 16** below.

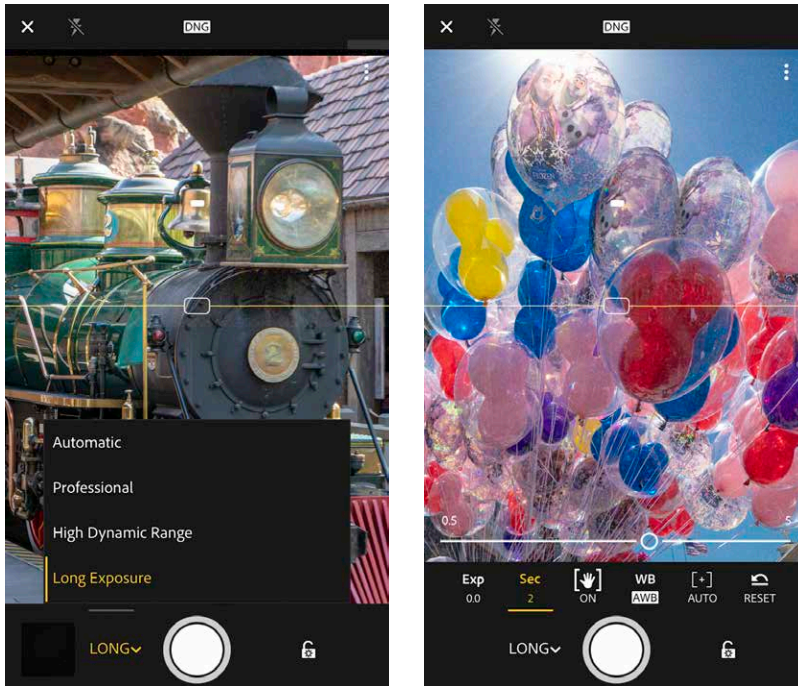


Figure 16 The Lightroom CC camera mode menu (left) and the camera Long Exposure timer settings (right).

When selected, you can set the exposure time by adjusting the Long Exposure timer settings. In this mode, the Lightroom CC camera captures a sequence of photos and combines them to produce a composite, long exposure image. You don't necessarily need to use a tripod as the Lightroom CC processing is able to align the still sections of a scene and keep these sharp. On the other hand, you can get creative with intentional camera movement to create blurry, abstract images (see **Figure 17**). However, if you move the camera about too much, Lightroom CC may be unable to process and won't create an image. Also do bear in mind that shooting in this mode uses up more battery power because of the added number of exposures and additional processing, which can take quite a while to compute at the longer exposure settings.

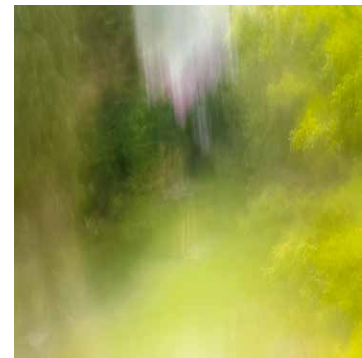


Figure 17 This photograph of my back garden was captured using a 5 second long exposure.

THE ADOBE® PHOTOSHOP® LIGHTROOM® CLASSIC CC BOOK

Includes Lightroom CC/Lightroom mobile



The Adobe Photoshop Lightroom Classic CC Book by Martin Evening

752 pages + Website with videos and free downloads

www.thelightroombook.com

Published by **Adobe Press**

All copyright © Martin Evening