

# Easy Photo Editing with Windows Vista's Photo Gallery

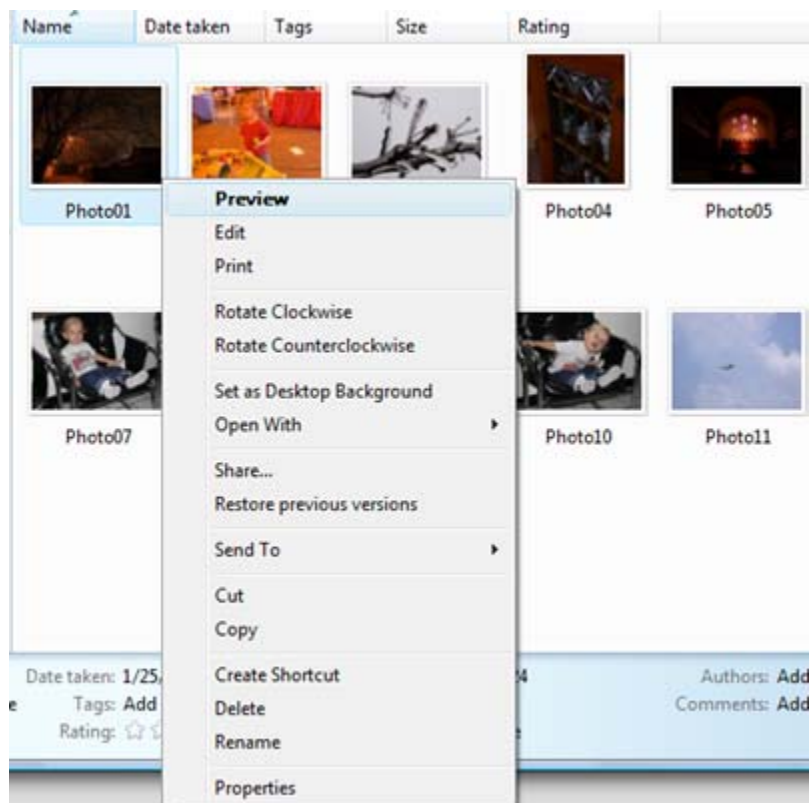
By Mark Edward Soper

## Introducing Windows Photo Gallery

Windows Vista brings the best set of photo-editing tools ever built into Windows in its brand-new Windows Photo Gallery feature. Photo Gallery can display technical information about the picture, create a data CD or video DVD slide show, print photos in a variety of sizes and layouts, reduce photo image sizes for easier emailing, and open a photo for editing with another program. In this article, we will see how to repair the most common photo problems using Photo Gallery.

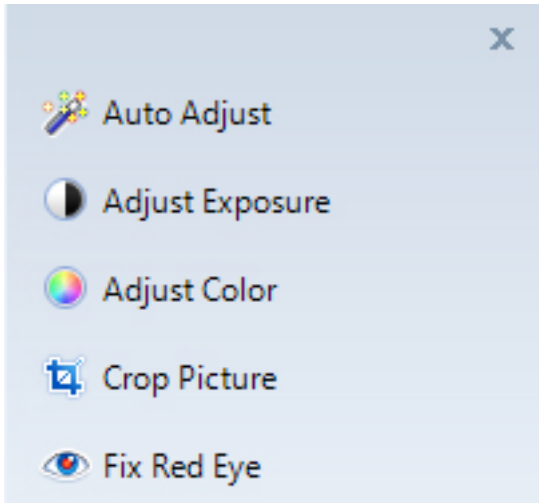
## Opening a Picture with Windows Vista Photo Gallery

To open a photo with Photo Gallery, open the folder containing the photo (Windows Vista uses each user's Pictures folder by default for photos), right-click the photo, and select Preview (**Figure 1**). Photo Gallery opens the photo. Note that some third-party photo editing or organizing programs may take over the preview option. In such cases, right-click the photo, select Open with..., and select Windows Photo Gallery from the list of choices.



## Opening the Fix Menu

After opening a photo with Windows Photo Gallery, click the Fix menu if you want to fix problems with the photo. The Fix menu (**Figure 2**) opens on the right side of the photo.



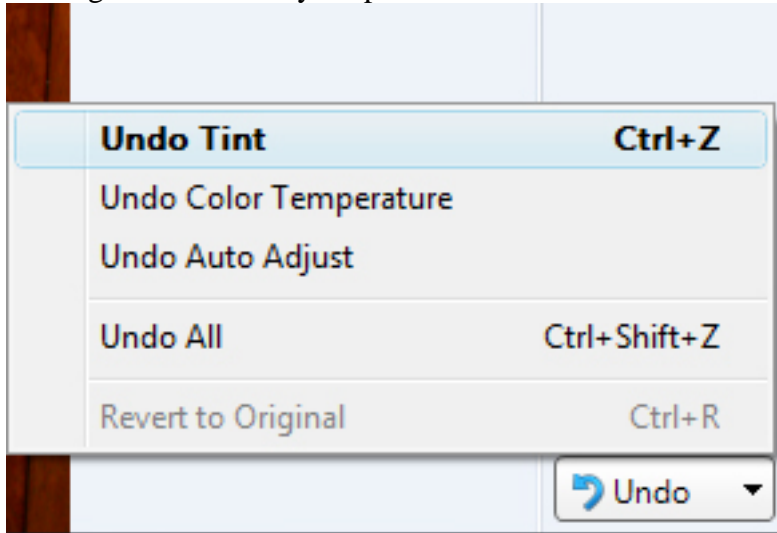
## Using Auto Adjust

If you're not sure how to fix a photo, but realize that it needs work, try Auto Adjust. Auto Adjust (**Figure 3**) can fix problems with exposure and color. In many cases, you may not need to make any other adjustments.



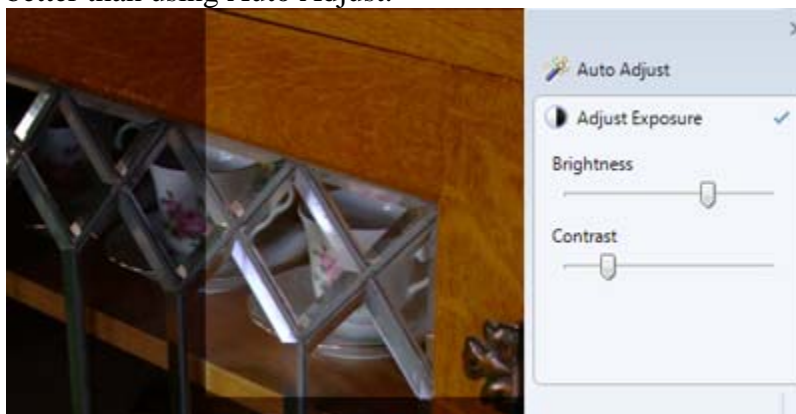
## Undoing and Redoing Your Edits

Use the Undo button below the editing tools to undo edits. To see the edits that have been made, open the Undo button menu (**Figure 4**). The most recent edit is listed at the top of the list. Select it to undo it. To undo more edits, select the edit to undo: that edit, along with all edits above it, will be undone. You can also click the Undo button to undo the last change made, and keep clicking Undo to undo each previous change. The Redo button works in a similar fashion. However, if you open the Redo button, the earliest change is listed at the top. If the Revert to Original option is listed, select it to revert to the original version of your photo.



## Using Adjust Exposure

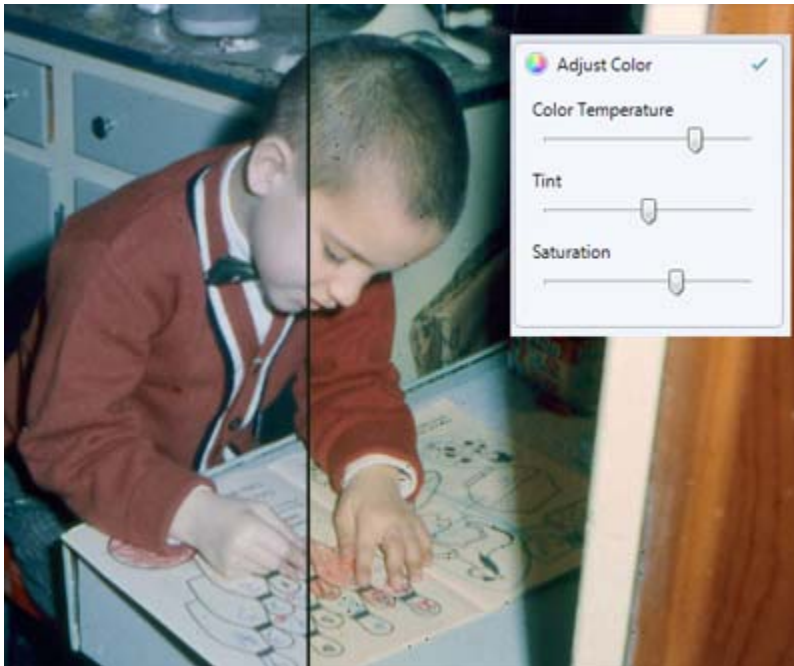
You can adjust exposure manually with Adjust Exposure. Click this option, and sliders for brightness and contrast appear. To darken the photo, move the Brightness slider to the left. To lighten the photo, move the Brightness slider to the right. To reduce contrast, move the Contrast slider to the left. To increase contrast, move the Contrast slider to the right. As this example (**Figure 5**) shows, adjusting exposure manually is sometimes better than using Auto Adjust.



## Using Adjust Color

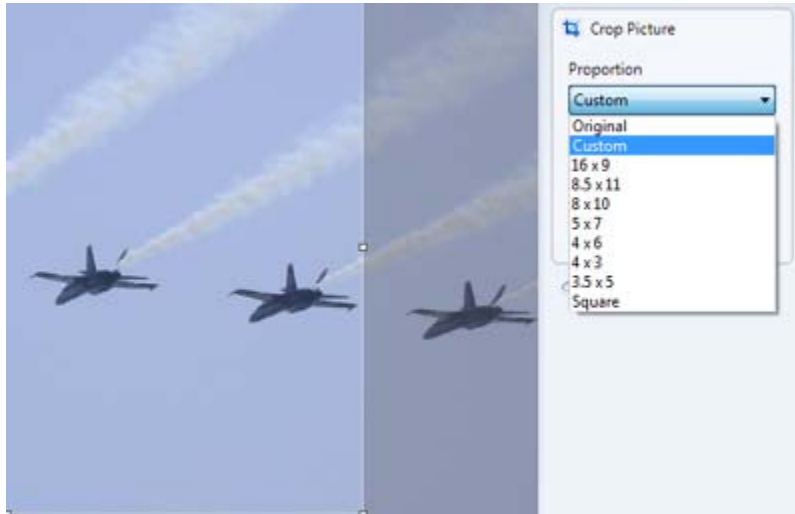
To help fix photos with color problems, click Adjust Color. Adjust Color offers three adjustments:

- Color Temperature (**Figure 6**) adjusts off-color problems caused by incorrect white balance or incorrect film type.
- Tint changes the overall color of a photo – it's useful for special effects.
- Saturation (also used in Figure 6) increases or decreases the intensity of colors in a photo. Adjust the Saturation slider all the way to the left, and you turn a color photo into a black-and-white photo. Adjust the slider all the way to the right, and colors are intensified. Use smaller adjustments to tone down too-vivid colors or to enhance faded colors.



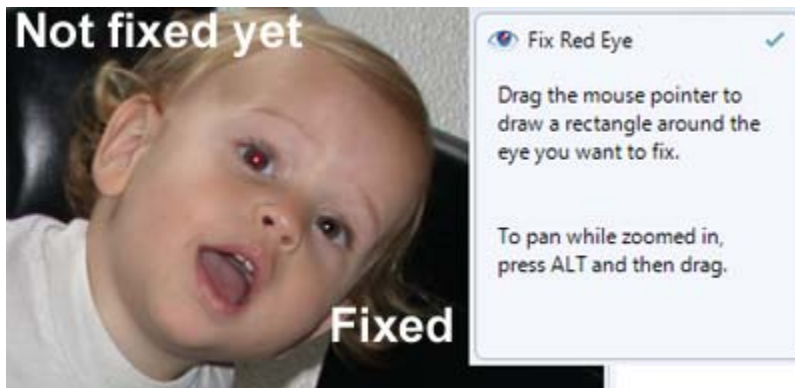
## Cropping a Picture

The Crop Picture tool includes a wide variety of popular print sizes, as well as custom and square (**Figure 7**). Drag the crop frame to highlight the area of the picture you want to include in the cropped version. The Rotate Frame option enables you to crop a vertical picture from a horizontal one, and vice-versa. Click Apply after selecting the desired crop size, frame position, and frame rotation to complete the cropping process.



## Fixing Red Eye

To remove red eye from a photo, click Fix Red Eye, then use the mouse to draw a rectangle around a red eye (**Figure 8**). Release the left mouse button, and redevye is removed. Repeat as needed until all red eye problems are removed.



## **Saving Your Changes**

When you close a photo in Windows Photo Gallery, all changes are saved automatically. If you use Windows Vista Ultimate, Enterprise, or System, you can use the Previous Versions tab on a photo's properties sheet to revert to a previous version stored by System Restore or by a file and folder backup. However, if you use Windows Vista Home Basic or Home Premium, you don't have the Previous Versions tab. If you use Windows Vista Home Basic or Home Premium editions, we recommend that you copy the photos you want to fix into a separate folder, so your originals are preserved.

## **Conclusion**

Windows Photo Gallery's photo-editing tools work very well, and will help to minimize the need to use full-featured photo-editing programs for many people.

*Mark Edward Soper is a contributor to Special Edition Using Windows Vista, 0789734729, and is the author of the forthcoming book on Maximum PC Microsoft Windows Vista Exposed, 0789735865*