

5.5.4 Optional Lab: Install Third-Party Software in Windows 7

Introduction

Print and complete this lab.

In this lab, you will install and remove a third party software application supplied by your instructor. The student will install the Packet Tracer Windows application.

Recommended Equipment

The following equipment is required for this exercise:

- A computer system that is using Windows 7
- A flash drive or CD with the latest Packet Tracer Windows install package

Step 1

Log on to the computer with the Administrator account.

Use Windows Explorer to navigate to the Packet Tracer folder.

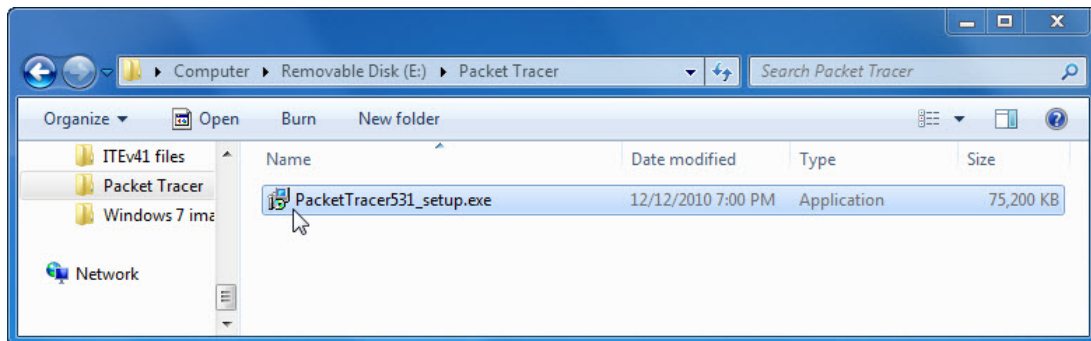
If installing from a CD, place the CD into the CD drive.

Navigate to D:\Packet Tracer.

If installing from a flash drive, place the flash drive into a USB port.

Navigate to E:\Packet Tracer.

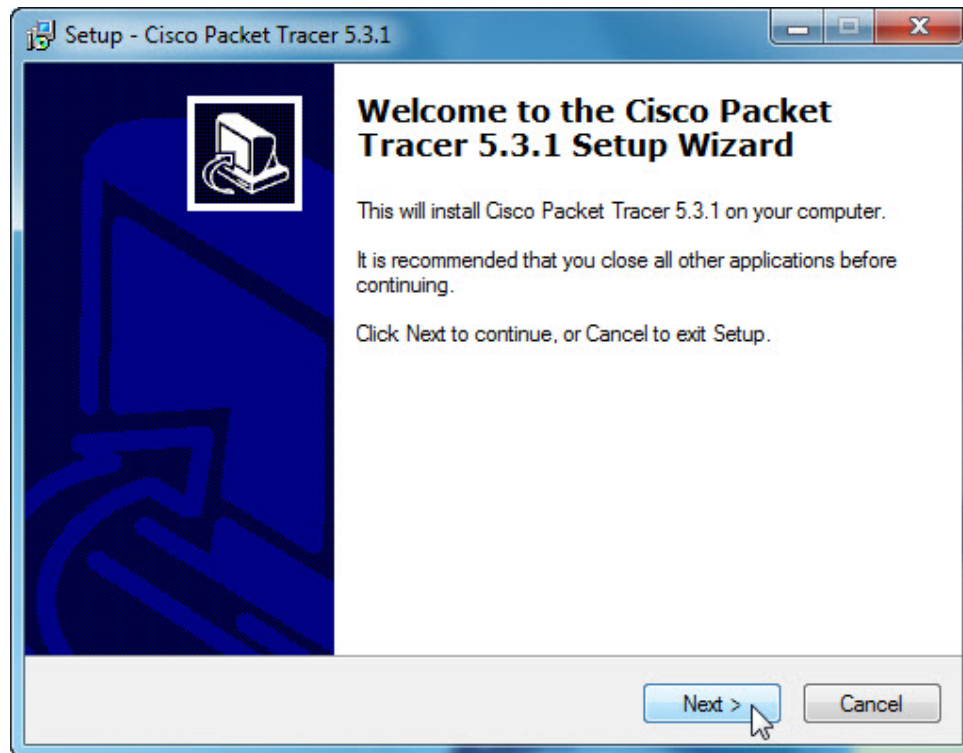
Locate the PacketTracer###_setup.exe (where ### is the version number) application in the CD or flash drive. Click the **PacketTracer531_setup.exe** icon to start the installation process of the Packet Tracer application. You may need to double-click the icon to start the installation.



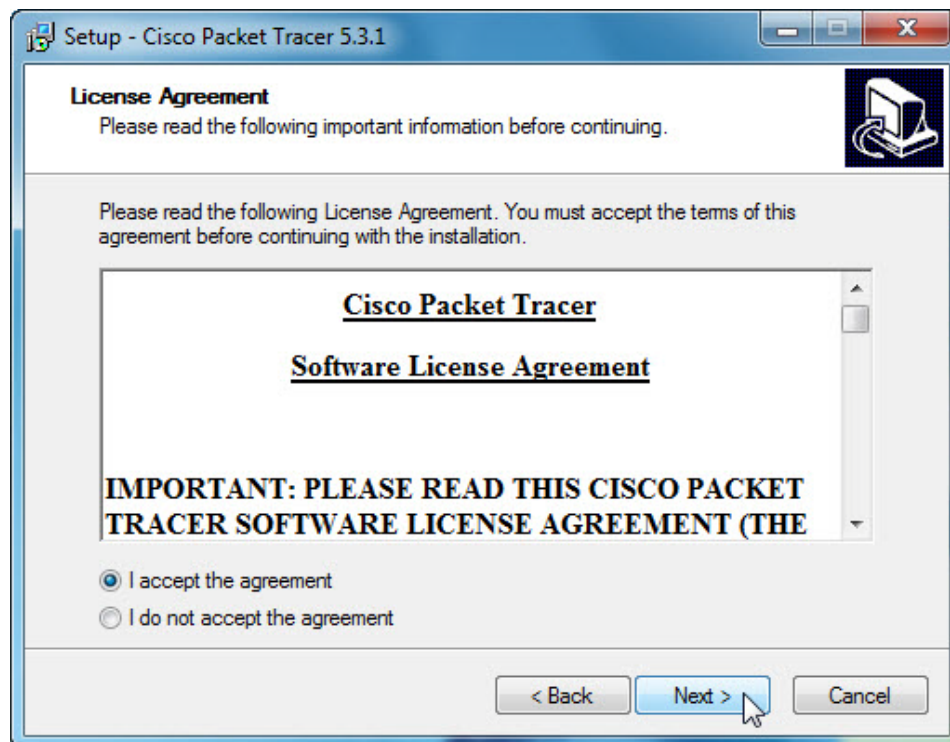
If the User Account Control window appears click **Yes**.

Step 2

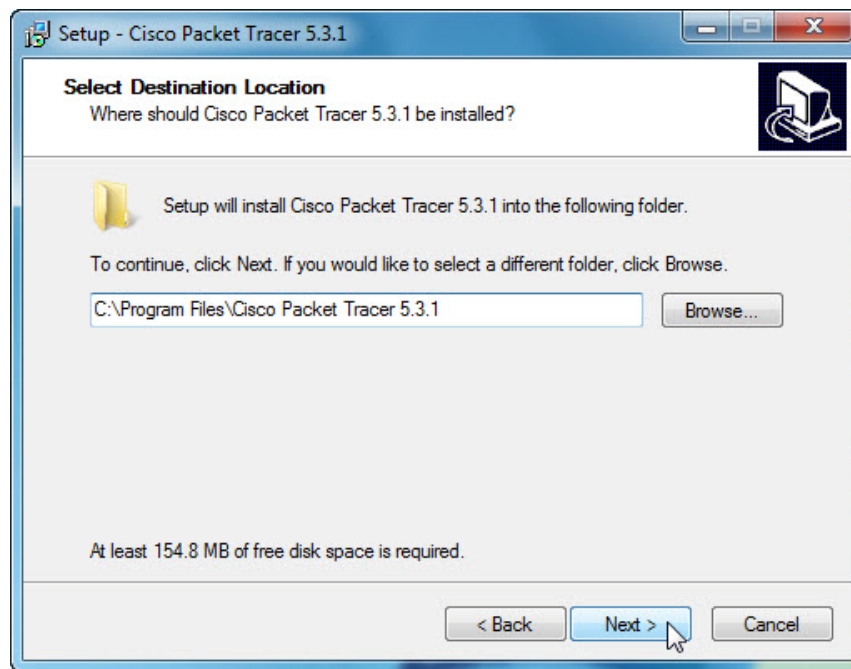
Click **Next** when the Setup – Cisco Packet Tracer 5.3.1 program window opens.



Select "I accept the agreement". Click **Next**.



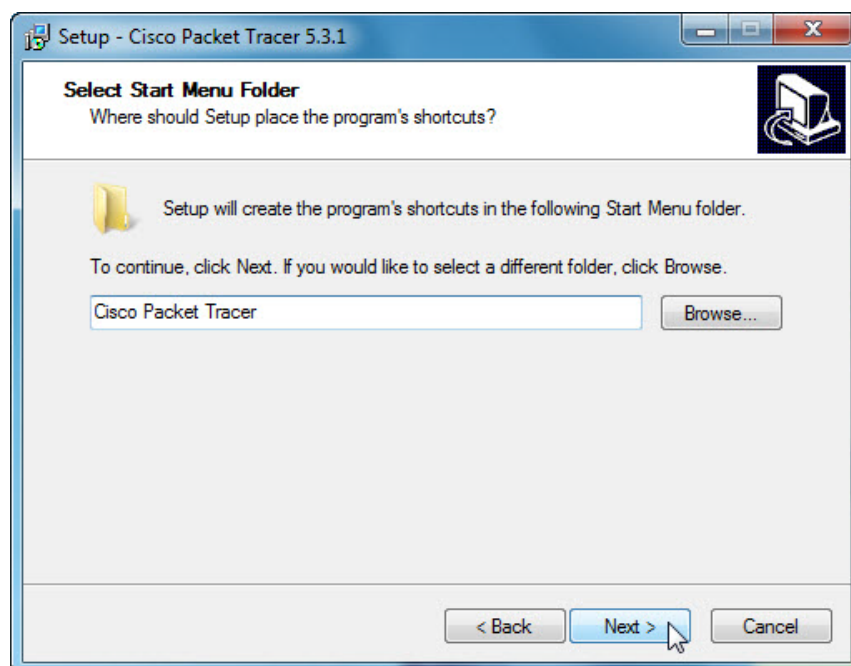
The “Select Destination Location” page appears. Keep the default setting.



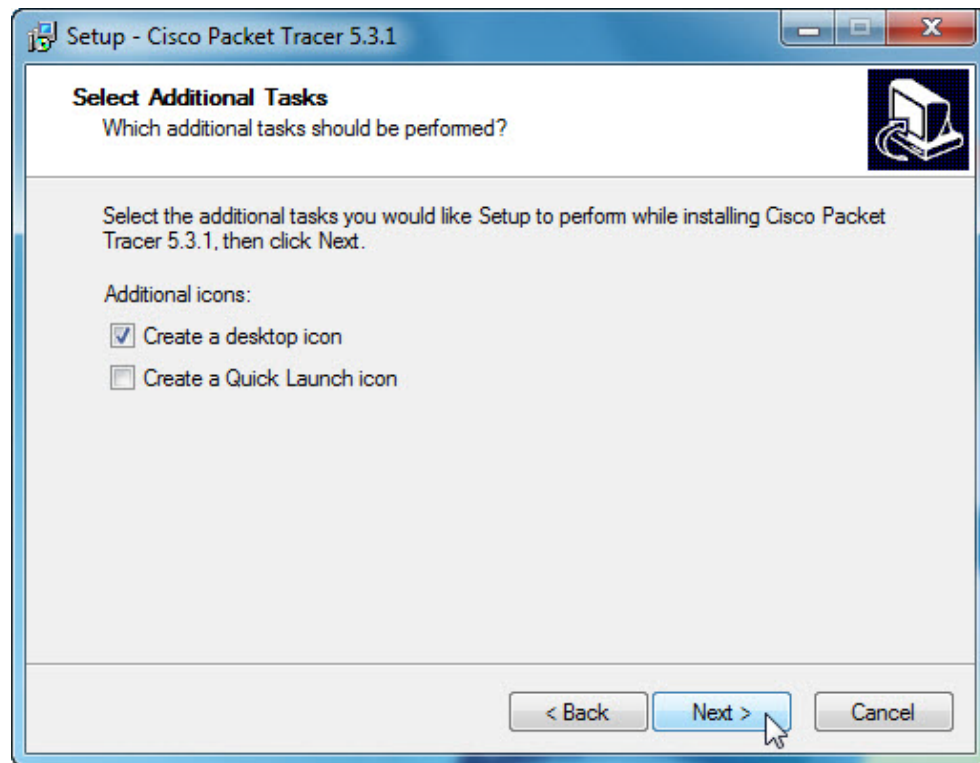
What is the default location for Packet Tracer?

Click **Next**.

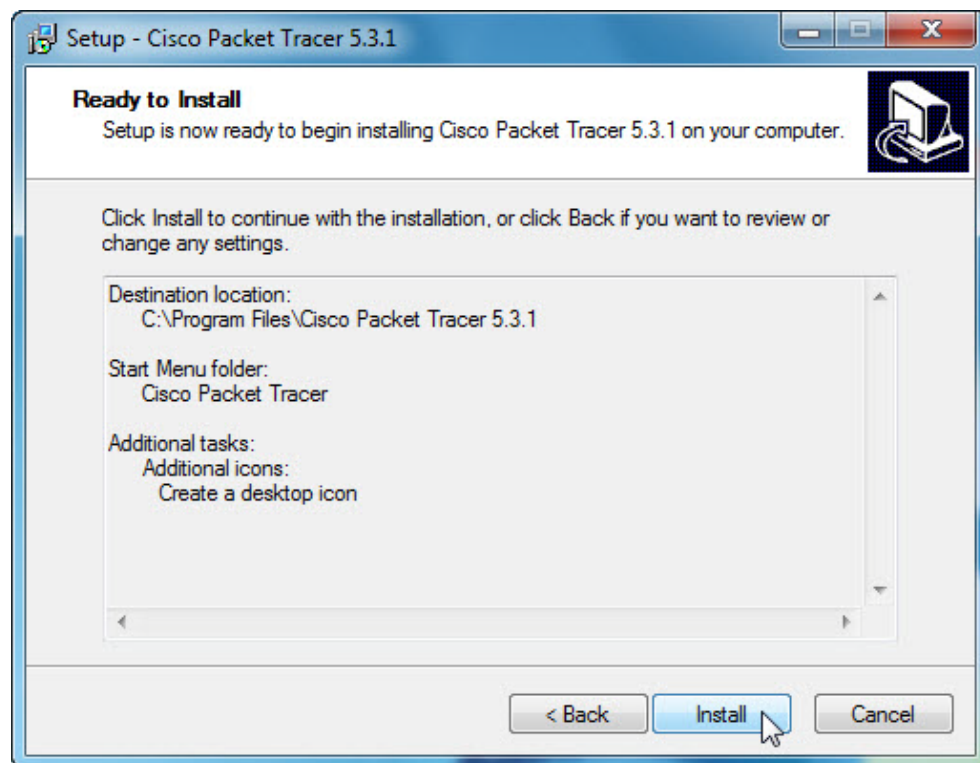
The “Select Start Menu Folder” page appears. Leave the default choice and click **Next**.



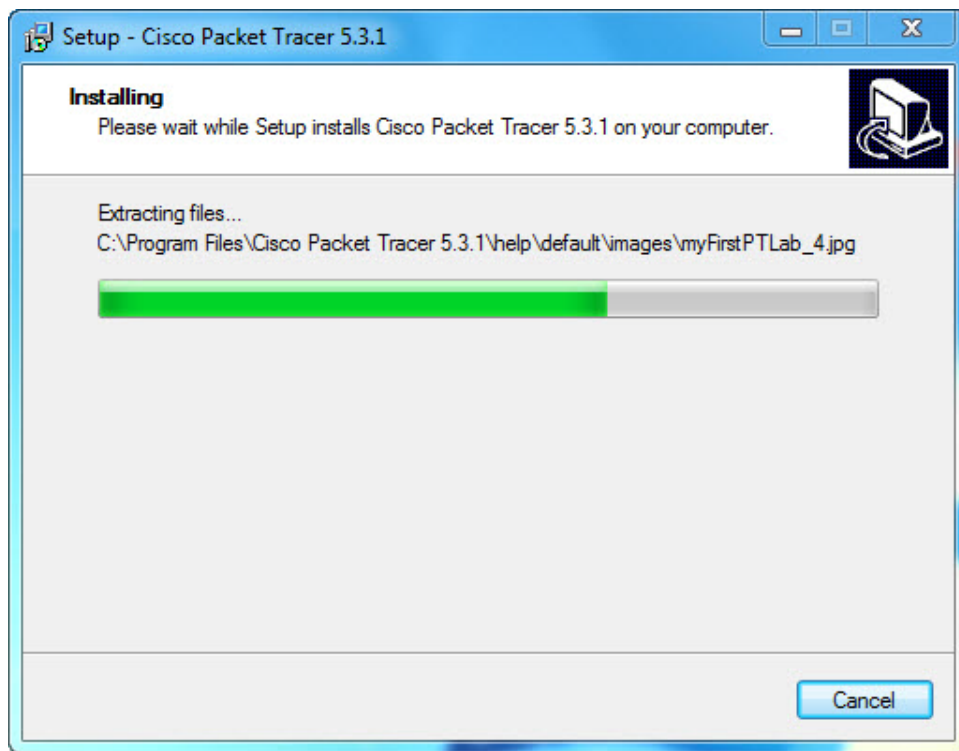
The “Select Additional Tasks” page appears. Leave the default choice and click **Next**.



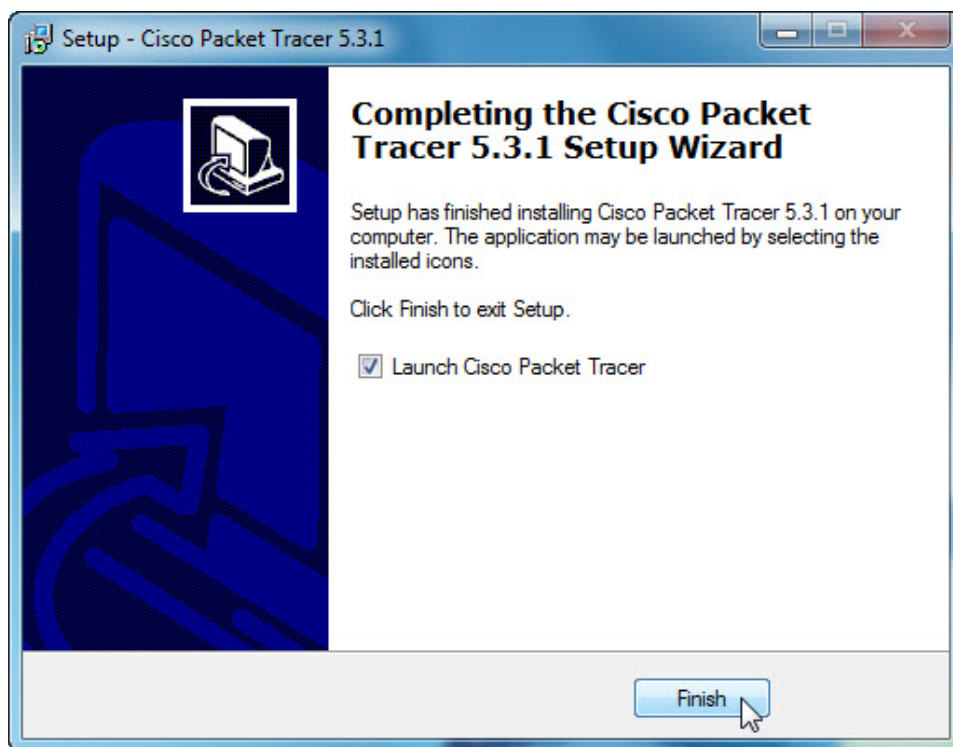
On the “Ready to Install” page, click **Install** to install the application.



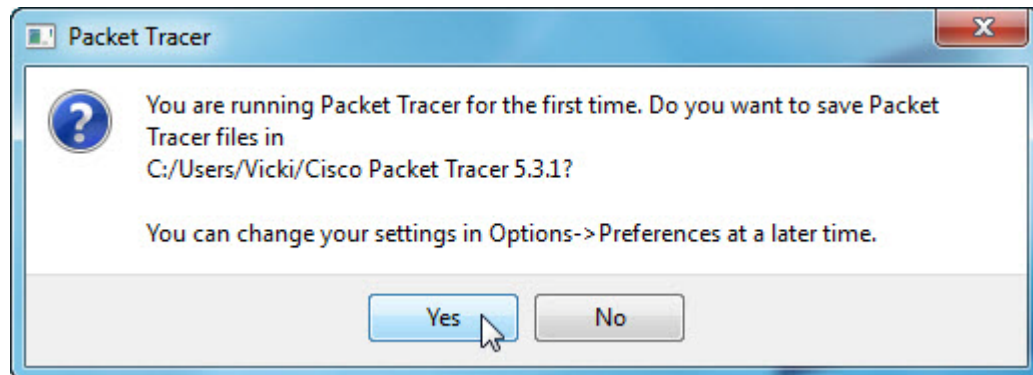
A window opens displaying the file installation progress.



When the “Completing the Cisco Packet Tracer 5.3.1 Setup Wizard” page appears, click **Finish**.

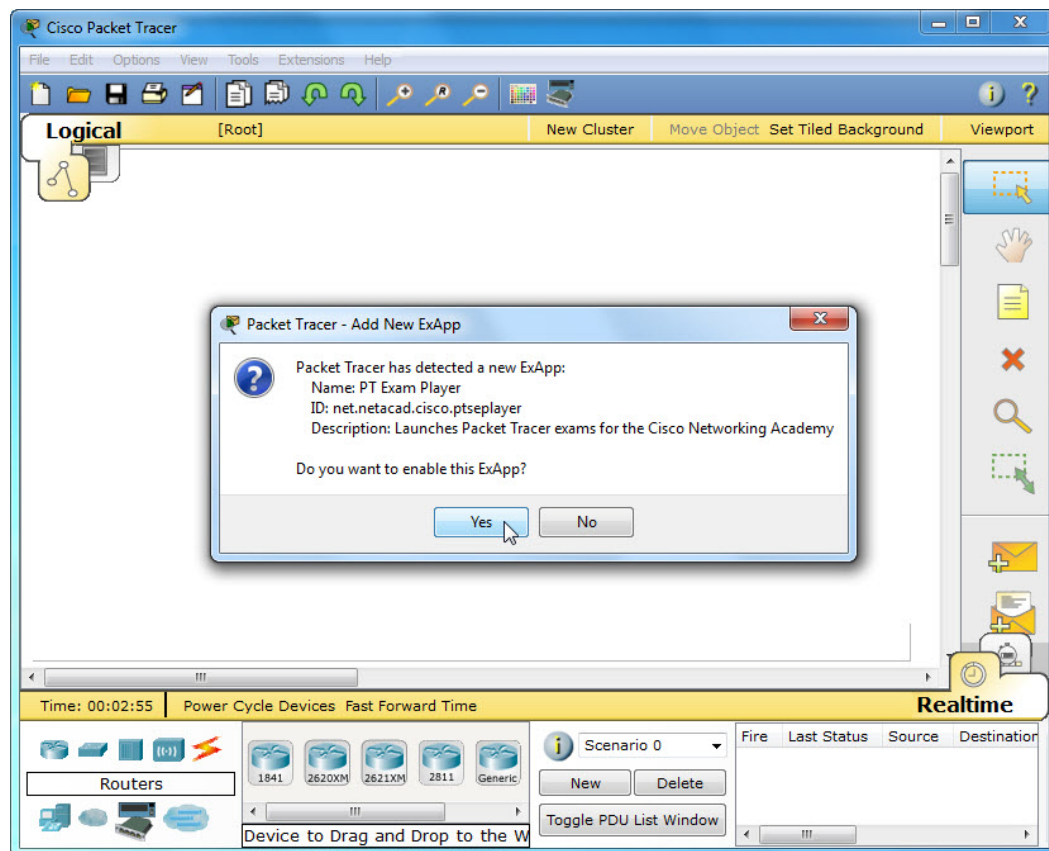


The “You are running Packet Tracer for the first time” page appears. Click **Yes**.

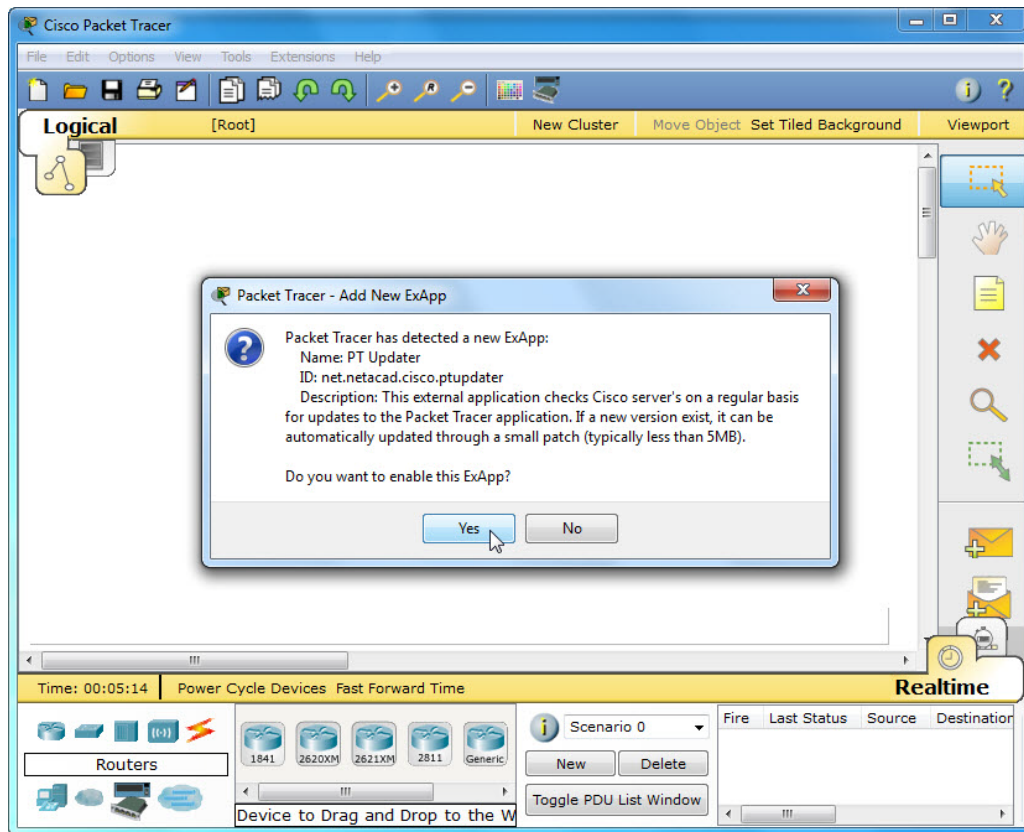


If the User Account Control window appears, click **Allow access**.

If the “Packet Tracer has detected a new ExApp:” page appears. Click **Yes**.



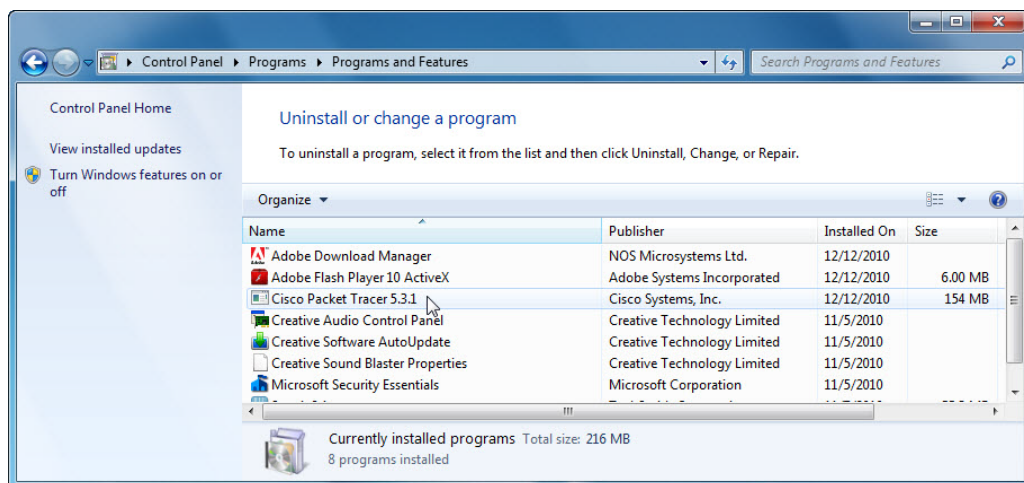
If a second “Packet Tracer has detected a new ExApp:” page appears. Click **Yes**.



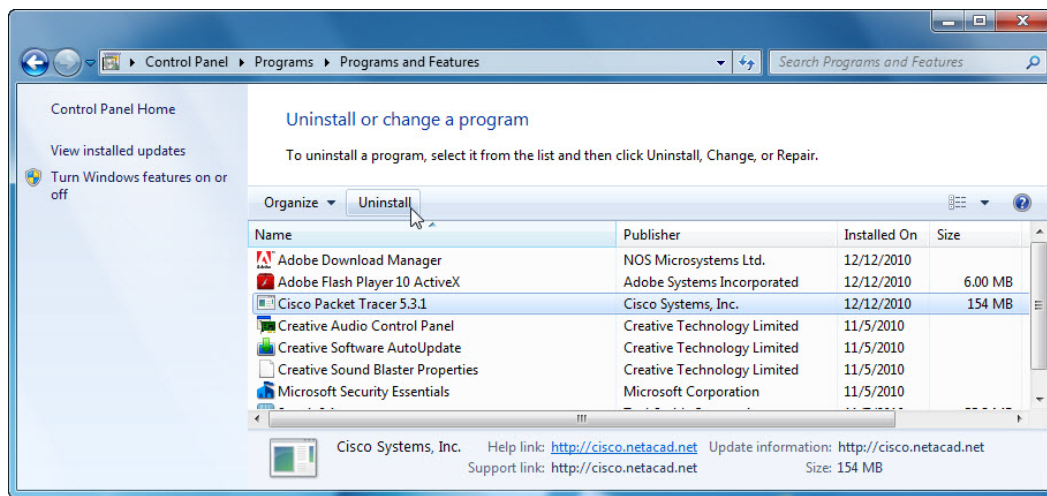
Close all open windows.

Step 3

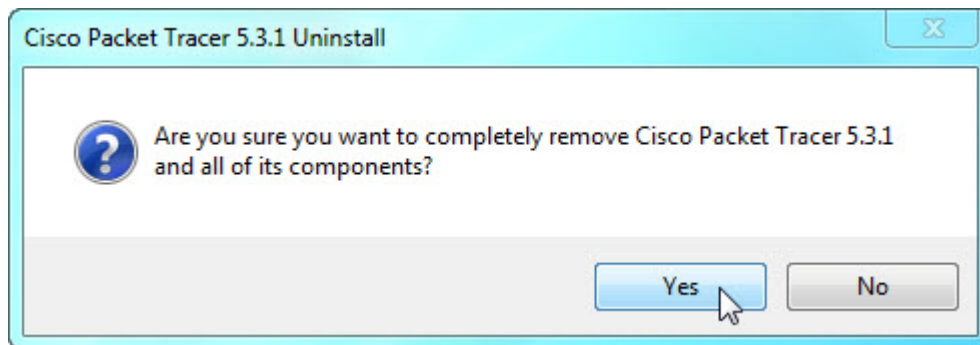
To uninstall a program, choose **Start > Control Panel > Uninstall a program**. Click the **Cisco Packet Tracer 5.3.1** in the list.



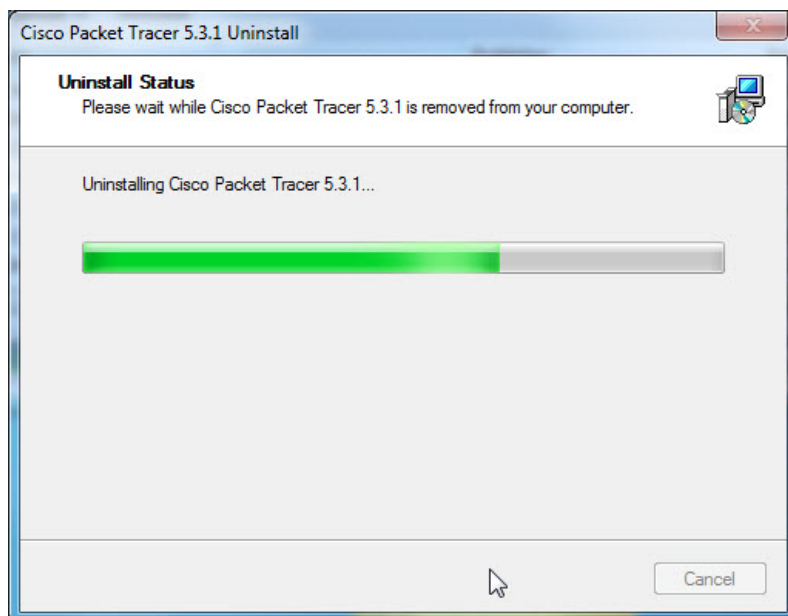
Click **Uninstall**.



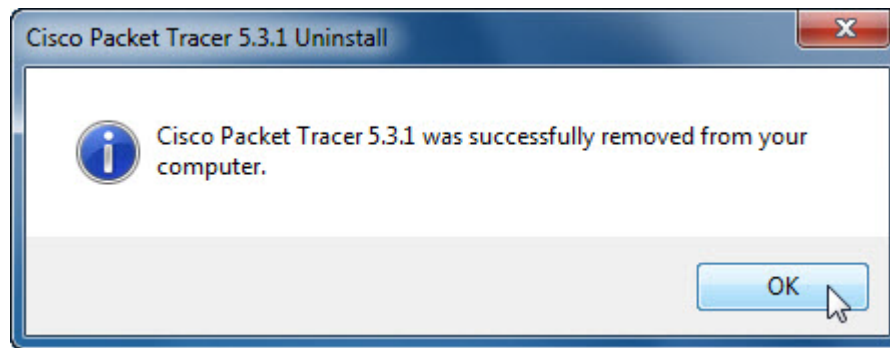
Click **Yes** to confirm the removal.



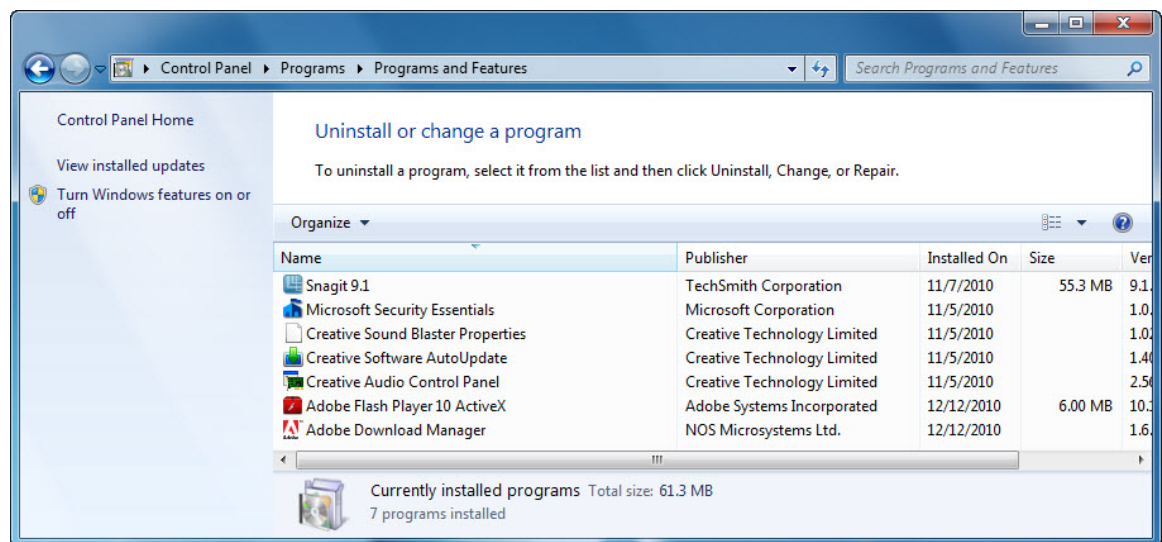
The following screen will appear displaying the removal progress:



Click **OK** to confirm the successful removal of Packet Tracer.



After the application removal process, the Uninstall or change a program window no longer shows the Cisco Packet Tracer 5.3.1 in the list.



1. Why does Microsoft recommend using Uninstall or change a program to remove an installed application?