

## 15.5.3 Optional Lab: Test the Wireless NIC in Windows 7

### Introduction

Print and complete this lab.

In this lab, you will check the status of your wireless connection, investigate the availability of wireless networks, and test connectivity.

### Recommended Equipment

- A computer with Windows 7 installed
- A wireless NIC installed
- An Ethernet NIC installed
- Linksys WRT300N Wireless Router
- Internet connectivity

### Step 1

Disconnect the Ethernet cable from your computer.

An “orange dot” appears over the “Connections” icon.

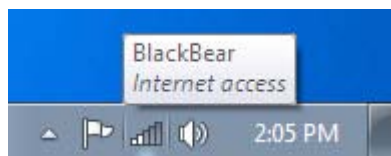


Connect to a wireless network.

Hover over the “Connections” icon in the tray.

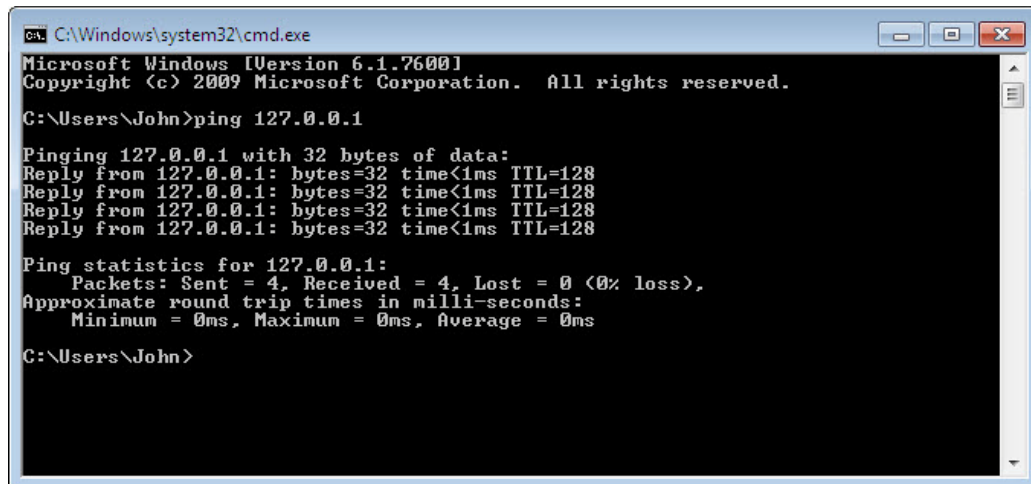
What is the name of the wireless connection?

Answers may vary.



Open a command window.

Ping **127.0.0.1**.



```
C:\Windows\system32\cmd.exe
Microsoft Windows [Version 6.1.7600]
Copyright (c) 2009 Microsoft Corporation. All rights reserved.

C:\Users\John>ping 127.0.0.1

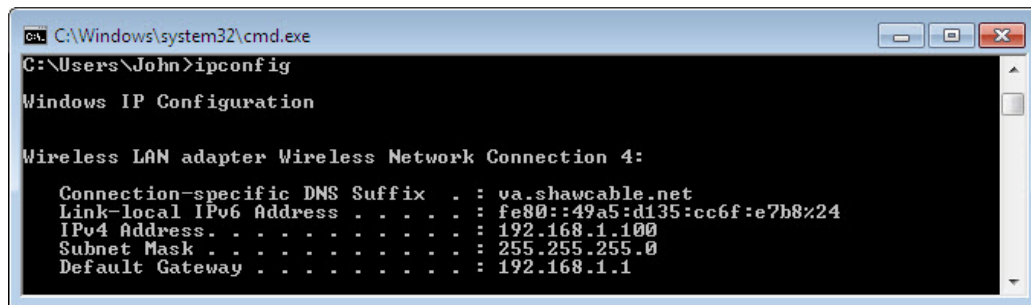
Pinging 127.0.0.1 with 32 bytes of data:
Reply from 127.0.0.1: bytes=32 time<1ms TTL=128
Reply from 127.0.0.1: bytes=32 time<1ms TTL=128
Reply from 127.0.0.1: bytes=32 time<1ms TTL=128
Reply from 127.0.0.1: bytes=32 time<1ms TTL=128

Ping statistics for 127.0.0.1:
    Packets: Sent = 4, Received = 4, Lost = 0 (0% loss),
    Approximate round trip times in milli-seconds:
        Minimum = 0ms, Maximum = 0ms, Average = 0ms

C:\Users\John>
```

How many Replies did you receive?

Use the ipconfig command.



```
C:\Windows\system32\cmd.exe
C:\Users\John>ipconfig

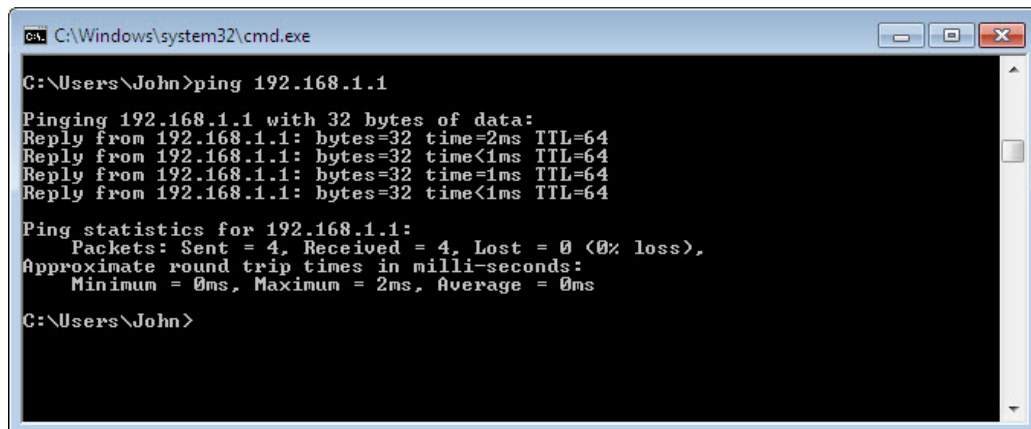
Windows IP Configuration

Wireless LAN adapter Wireless Network Connection 4:

    Connection-specific DNS Suffix  . : va.shawcable.net
    Link-local IPv6 Address . . . . . : fe80::49a5:d135:cc6f:e7b8%24
    IPv4 Address. . . . . : 192.168.1.100
    Subnet Mask . . . . . : 255.255.255.0
    Default Gateway . . . . . : 192.168.1.1
```

What is the IP address of the default gateway?

Ping the default gateway.



```
C:\Windows\system32\cmd.exe
C:\Users\John>ping 192.168.1.1

Pinging 192.168.1.1 with 32 bytes of data:
Reply from 192.168.1.1: bytes=32 time=2ms TTL=64
Reply from 192.168.1.1: bytes=32 time<1ms TTL=64
Reply from 192.168.1.1: bytes=32 time=1ms TTL=64
Reply from 192.168.1.1: bytes=32 time<1ms TTL=64

Ping statistics for 192.168.1.1:
    Packets: Sent = 4, Received = 4, Lost = 0 (0% loss),
    Approximate round trip times in milli-seconds:
        Minimum = 0ms, Maximum = 2ms, Average = 0ms

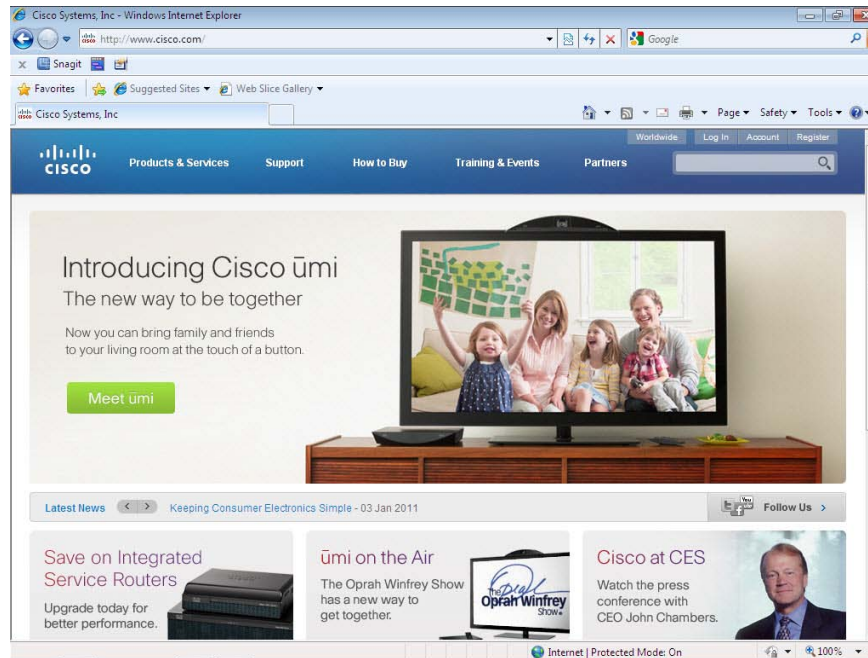
C:\Users\John>
```

A successful ping indicates that there is a connection between the computer and the default gateway.

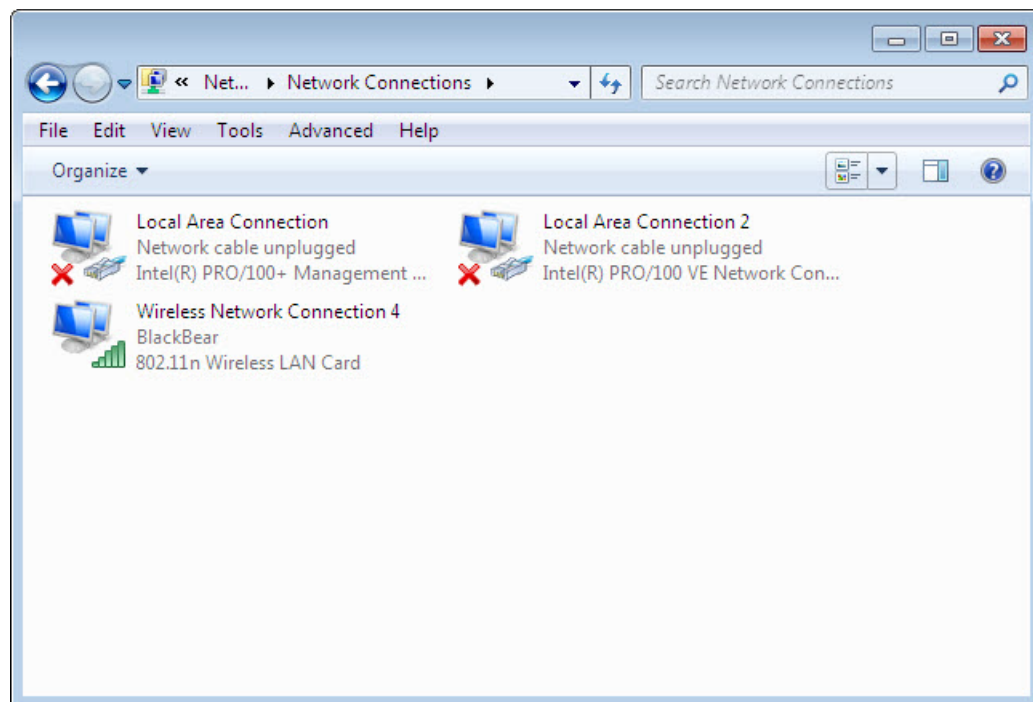
**Step 2**

Open a web browser.

Type **www.cisco.com** in the “Address” field, and then press **Enter**.

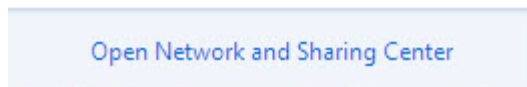
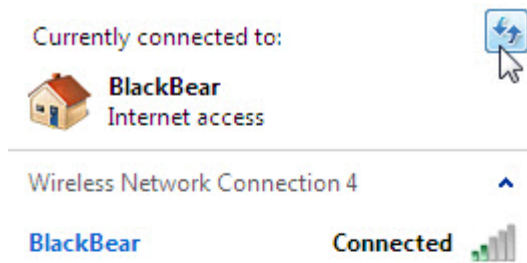
**Step 3**

Open the **Network Connections** window.



Right-click the wireless connection and choose **Connect / Disconnect**.

Select **All** from the Show drop-down menu. Press the **Refresh** button.



What are the names of the wireless networks that are available?