

## 11.4.3 Optional Lab: Install Additional RAM in Windows 7

### Introduction

Print and complete this lab.

In this lab, you will install additional RAM.

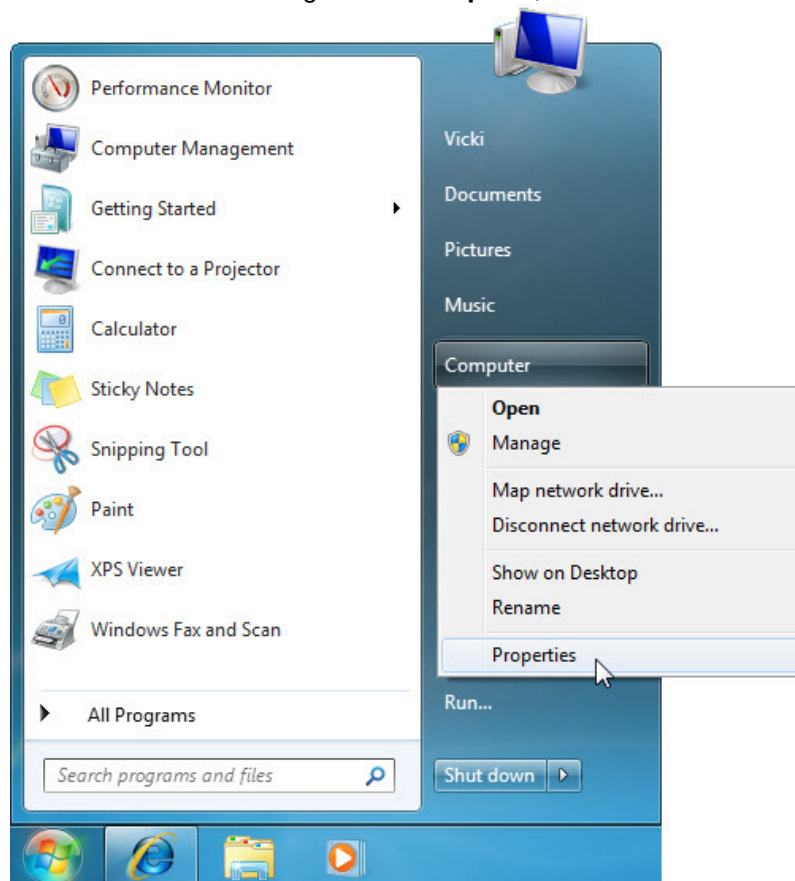
### Recommended Equipment

- Computer running Windows 7
- Available RAM slot on motherboard
- Additional RAM module(s)
- Tool kit
- Antistatic wrist strap
- Antistatic mat

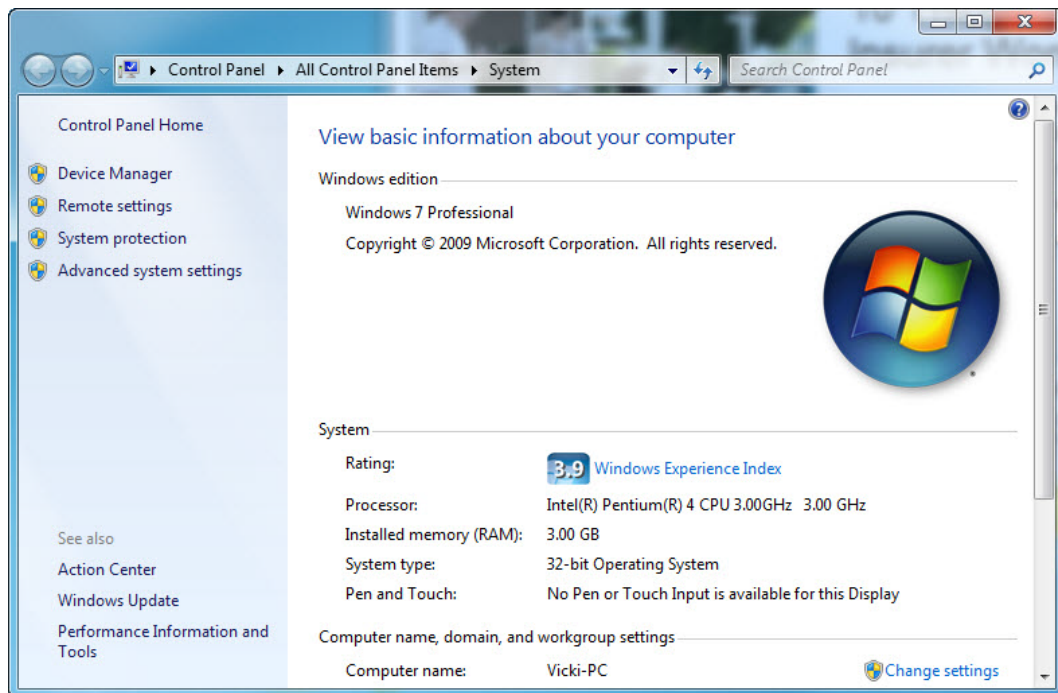
### Step 1

Log on to the computer as an administrator.

Click the **Start** button. Right-click **Computer**, and then choose **Properties**.



The System window appears.



How much RAM is installed in your computer?

Close the System window.

## Step 2

Shut down your computer.

If a switch is present on the power supply, set the switch to “0” or “off”.

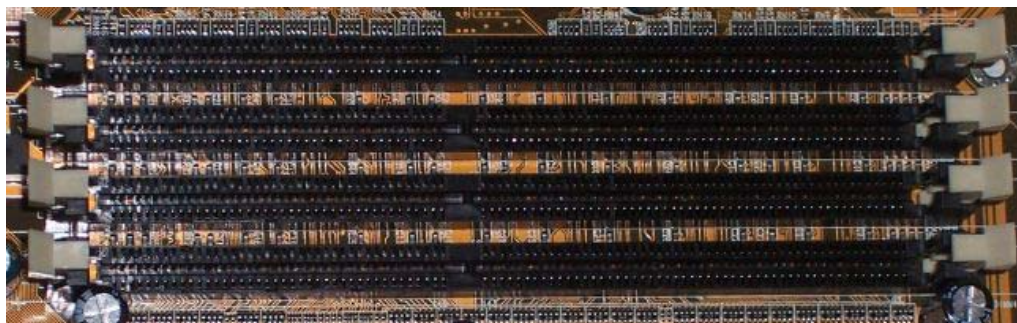
Unplug the computer from the AC outlet.

Remove the side panels from the case.

Put on the antistatic wrist strap, and then clip it to the case.

## Step 3

Press down on the retainer tabs at each end of a slot. The memory module will be lifted out of the memory slot. Remove the memory module.



What type of memory is the module that you removed?

What is the speed of the memory in MHz?

#### Step 4

**CAUTION:** If, during re-installation of the RAM module, the module does not fit correctly or does not install easily, carefully remove the module and start the installation again.

Align the notches at the bottom of the RAM module with the key(s) in the ram slot. Place the RAM module in the slot, and then push down firmly on the RAM module until the module is fully seated in the slot and the retainer tabs hold the module in place.

Press each retainer tab in toward the memory module to make sure that the RAM is held in place by the retainer tabs.

Install the RAM modules provided by your instructor.


#### Step 5

Remove the antistatic wrist strap from the case and from your wrist, and then replace the case panels.

Plug the power cable into an AC outlet.

If a switch is present on the power supply, set the switch to “1” or “on”.

Boot your computer, and then log on as an administrator.

A screenshot of a computer's BIOS boot screen. The text is white on a black background. It shows the AMIBIOS version (C)2001 American Megatrends, Inc., the BIOS date (08/14/03 19:41:02), and the version (08.00.02). It prompts the user to press DEL to run Setup and shows the progress of checking NVRAM. It then displays the detected hardware: 512MB OK, Auto-Detecting Pri Master..IDE Hard Disk, Auto-Detecting Pri Slave...IDE Hard Disk, Auto-Detecting Sec Master..CDROM, and Auto-Detecting Sec Slave...

```
AMIBIOS(C)2001 American Megatrends, Inc.  
BIOS Date: 08/14/03 19:41:02 Ver: 08.00.02  
  
Press DEL to run Setup  
Checking NVRAM..  
  
512MB OK  
Auto-Detecting Pri Master..IDE Hard Disk  
Auto-Detecting Pri Slave...IDE Hard Disk  
Auto-Detecting Sec Master..CDROM  
Auto-Detecting Sec Slave...
```

Open the “System Properties” window.

How much RAM is installed in your computer?