

# My Samsung Galaxy Note™ II



Craig James Johnston  
Guy Hart-Davis

que

FREE SAMPLE CHAPTER



SHARE WITH OTHERS

# My Samsung Galaxy Note™ II

Craig James Johnston  
Guy Hart-Davis

**que**®

800 East 96th Street,  
Indianapolis, Indiana 46240 USA

# My Samsung Galaxy Note™ II

Copyright © 2013 by Pearson Education, Inc.

All rights reserved. No part of this book shall be reproduced, stored in a retrieval system, or transmitted by any means, electronic, mechanical, photocopying, recording, or otherwise, without written permission from the publisher. No patent liability is assumed with respect to the use of the information contained herein. Although every precaution has been taken in the preparation of this book, the publisher and author assume no responsibility for errors or omissions. Nor is any liability assumed for damages resulting from the use of the information contained herein.

ISBN-13: 978-0-7897-4882-9

ISBN-10: 0-7897-4882-7

Library of Congress Control Number: 2013935190.

Printed in the United States of America

First Printing: May 2013

## Trademarks

All terms mentioned in this book that are known to be trademarks or service marks have been appropriately capitalized. Que Publishing cannot attest to the accuracy of this information. Use of a term in this book should not be regarded as affecting the validity of any trademark or service mark.

All Galaxy Note II images are provided by Samsung Electronics America.

## Warning and Disclaimer

Every effort has been made to make this book as complete and as accurate as possible, but no warranty or fitness is implied. The information provided is on an "as is" basis. The author and the publisher shall have neither liability nor responsibility to any person or entity with respect to any loss or damages arising from the information contained in this book.

## Bulk Sales

Que Publishing offers excellent discounts on this book when ordered in quantity for bulk purchases or special sales. For more information, please contact

### U.S. Corporate and Government Sales

1-800-382-3419

corpsales@pearsontechgroup.com

For sales outside of the U.S., please contact

### International Sales

international@pearsoned.com

### Editor-in-Chief

Greg Wiegand

### Acquisitions Editor

Michelle Newcomb

### Development Editor

Charlotte Kughen,

The Wordsmithery LLC

### Managing Editor

Kristy Hart

### Project Editor

Betsy Gratner

### Copy Editor

Karen Annett

### Indexer

Erika Millen

### Proofreader

Kathy Ruiz

### Technical Editor

Christian Kenyeres

### Editorial Assistant

Cindy Teeters

### Book Designer

Anne Jones

### Compositor

Trina Wurst,

TnT Design, Inc.

# Contents at a Glance

<b>Prologue</b>	Getting to Know Your Galaxy Note II .....	<b>3</b>
<b>Chapter 1</b>	Connecting to Bluetooth, Wi-Fi, and VPNs .....	<b>43</b>
<b>Chapter 2</b>	Customizing Your Galaxy Note II .....	<b>73</b>
<b>Chapter 3</b>	Browsing the Web .....	<b>93</b>
<b>Chapter 4</b>	Email .....	<b>109</b>
<b>Chapter 5</b>	Google Now and Navigation .....	<b>141</b>
<b>Chapter 6</b>	Working with Date, Time, and Calendar .....	<b>157</b>
<b>Chapter 7</b>	Contacts .....	<b>181</b>
<b>Chapter 8</b>	Phone, SMS, and MMS .....	<b>203</b>
<b>Chapter 9</b>	Audio, Video, Photos, and Movies .....	<b>229</b>
<b>Chapter 10</b>	Books and Magazines .....	<b>263</b>
<b>Chapter 11</b>	Working with Android Apps .....	<b>281</b>
<b>Chapter 12</b>	Maintaining Your Galaxy Note II and Solving Problems ...	<b>293</b>
	Index .....	<b>304</b>

# Table of Contents

<b>Prologue: Getting to Know Your Galaxy Note II</b>	<b>3</b>
Your Galaxy Note II's External Features	3
Front	4
Back	5
Top	6
Bottom	6
S Pen	7
Getting to Know the S Pen	7
Air View	8
Gestures	10
Quick Commands	11
First-Time Setup	13
Fundamentals of Android 4.1 and TouchWiz	18
The Unlock Screen	18
The Home Screen(s)	20
Use the Touchscreen	24
Use the Keyboard	25
Dictation—Speak Instead of Type	29
Edit Text	30
Menus	32
Run Two Apps at the Same Time	33
Switch Between Apps	35
Installing Synchronization Software	35
Install Android File Transfer (Apple Mac OS X)	36
Install Google Music Manager (Apple Mac)	37
Install Google Music Manager (Windows)	38
Configure Music Manager (Windows and Apple Mac)	39
<b>1 Connecting to Bluetooth, Wi-Fi, and VPNs</b>	<b>43</b>
Connecting to Bluetooth Devices	43
Pair with a New Bluetooth Device	44
Change Bluetooth Settings	47
Change Bluetooth Device Options	47

Wi-Fi	49
Connect to Wi-Fi	49
Wi-Fi Network Options	50
Advanced Wi-Fi Options	51
Wi-Fi Direct	53
Set Up Wi-Fi Direct	53
Use Wi-Fi Direct (the Official Way)	54
Use Wi-Fi Direct (Use WiFi Shoot)	56
Near Field Communications (NFC)	57
Enable NFC, Android Beam, and S Beam	57
Use Android Beam to Send Links to Content	58
Use Android Beam to Send Real Files	59
Use Samsung S Beam to Send Files	61
Cellular Networks	62
Change Mobile Settings	62
Virtual Private Networks (VPN)	64
Add a VPN	64
Connect to a VPN	66
Mobile Wi-Fi Hotspot	69
Start Your Mobile Wi-Fi Hotspot	69

**2****Customizing Your Galaxy Note II****73**

Changing Your Wallpaper	74
Wallpaper from Gallery Pictures	75
Live Wallpaper	76
Wallpaper	76
Changing Your Keyboard	77
Adding Widgets to Your Home Screens	78
Add a Widget	78
Remove and Move a Widget	80
Setting the Language	80
Changing Accessibility Settings	81
Adjusting Sound Settings	83
Modifying Display Settings	84

Adjusting Samsung-Specific Settings .....	87
Home Screen Mode .....	87
Blocking Mode .....	88
Motion .....	89
S Pen .....	91

### **3 Browsing the Web 93**

Navigating with Chrome .....	93
Web Page Options .....	95
Browser Tricks .....	96
Managing Bookmarks, Most Visited, and Other Devices .....	97
Manage Bookmarks .....	98
Create a Bookmark .....	99
Manage the Most Visited Sites List .....	99
Manage the Other Devices List .....	100
Managing Multiple Tabs .....	101
Customizing Browser Settings .....	102

### **4 Email 109**

Gmail .....	109
Add a Google Account .....	110
Navigate the Gmail App .....	112
Compose Gmail Email .....	113
Add Attachments to Messages .....	114
Read Gmail Email .....	115
Modify Gmail Settings .....	117
Manage Gmail Labels .....	120
Email Application .....	121
Add a Work Email Account .....	121
Add a New POP3 or IMAP Account .....	124
Working with the Email App .....	127
Navigate the Email Application .....	127
Compose an Email .....	128
Add Attachments to a Message .....	130
Read Email .....	130
Change Email App Settings .....	132

**5 Google Now and Navigation 141**

Google Now .....	141
Understand the Google Now Screen .....	142
Set Up Google Now .....	143
Set Up Google Maps .....	145
Google Maps .....	146
Get Directions .....	146
Adjust Google Maps Settings .....	148
Use Offline Google Maps .....	150
Access Google Maps Offers .....	151
Locate Friends with Google Latitude .....	153
Navigation .....	153

**6 Working with Date, Time, and Calendar 157**

Setting the Date and Time .....	157
Clock Application .....	159
Navigate the Clock Application .....	159
Manage Alarms .....	160
Use the World Clock .....	162
Use the Desk Clock .....	163
Use Dock Mode .....	164
Using the Calendar Application .....	167
Navigate the Calendar Main Screen .....	167
Choose Which Calendars and Task Lists to View .....	169
Change Calendar Settings .....	169
Add a New Event .....	171
Respond to a Google Event Invitation .....	174
Respond to a Corporate Event Invitation .....	175
Use Quick Responses .....	177
Add a Task .....	178



**7****Contacts****181**

Adding Accounts .....	181
Navigating Contacts .....	186
Check a Contact's Status .....	188
Edit a Contact .....	188
Add a Contact Photo .....	190
Adding and Managing Contacts .....	191
Add a Contact from an Email .....	191
Add a Contact Manually .....	192
Add a Contact from a vCard .....	193
Add a Contact Using Near Field Communications .....	194
Manage Contacts Settings .....	195
Create Contact Groups .....	196
Change the Contacts in a Contacts Group .....	197
Choose Which Contacts to Display .....	198
Join and Separate Contacts .....	199
Adding a Contact to Your Home Screen .....	200

**8****Phone, SMS, and MMS****203**

Phone .....	203
Open and Navigate the Phone App .....	204
Receive a Call .....	205
Handle Missed Calls .....	207
Place a Call .....	208
Configure the Phone App .....	213
SMS and MMS .....	215
Get to Know the Messaging App .....	216
Manage Settings for the Messaging App .....	216
Compose Messages .....	223
Attach Files to Messages .....	224
Receive Messages .....	226

**Audio, Video, Photos, and Movies 229**

Enjoying Music with the Music Application .....	229
Install the Play Music App .....	230
Find Music .....	231
Purchase Music .....	231
Add Your Existing Music to Google Music .....	233
Use the Music Application .....	236
Control Playback .....	238
Work and Listen to Music .....	240
Work with Playlists .....	241
Listen to Music with No Wireless Coverage .....	243
Playing and Sharing Videos .....	244
Share Videos .....	246
Delete Videos .....	248
Taking Photos and Videos with the Camera App .....	248
Take Photos .....	248
Change Camera Settings .....	249
View the Photos You Take .....	251
Record Videos with the Camera App .....	253
Change Video Settings .....	253
Enjoying Videos with the YouTube App .....	254
Meet the YouTube Main Screen .....	255
Play a Video .....	256
Change YouTube Settings .....	258
Upload a Video to YouTube from the YouTube App .....	260

**Books and Magazines 263**

Reading Books with Play Books and Kindle .....	263
Open the Play Books App and Meet Your Library .....	264
Get Books from the Play Store .....	265
Read Books with the Play Books App .....	267
Choose Options for the Play Books App .....	268
Install the Kindle App .....	270

Reading Magazines with Play Magazines .....	274
Open the Play Magazines App and Choose Your Magazines .....	275
Read a Magazine with the Play Magazines App .....	277
Choose Options for the Play Magazines App .....	278

**11 Working with Android Apps 281**

Configuring Google Wallet .....	281
Navigating Google Play .....	283
Download Free Apps .....	284
Buy Apps .....	285
Manage Apps .....	286
Manage Google Play Settings .....	288
Keeping Apps Up to Date .....	289

**12 Maintaining Your Galaxy Note II and Solving Problems 293**

Updating Android .....	294
Optimizing the Battery .....	296
Take Care of the Battery .....	296
Monitor Battery Use .....	297
Choose Power-Saving Options .....	298
Apps and Memory .....	299
Reining in Your Data Usage .....	300
Set Background Data Limits .....	302
Caring for the Galaxy Note II's Exterior .....	302
Getting Help with Your Galaxy Note II .....	303

**Index 304**

## About the Authors

**Craig James Johnston** has been involved with technology since his high school days at Glenwood High in Durban, South Africa, when his school was given some Apple ][ Europluses. From that moment, technology captivated him, and he has owned, supported, evangelized, and written about it.

Craig has been involved in designing and supporting large-scale enterprise networks with integrated email and directory services since 1989. He has held many different IT-related positions in his career ranging from sales support engineer to mobile architect for a 40,000-smartphone infrastructure at a large bank.

In addition to designing and supporting mobile computing environments, Craig cohosts the CrackBerry.com podcast as well as guest hosting on other podcasts, including iPhone and iPad Live podcasts. You can see Craig's previously published work in his books *Professional BlackBerry*, and many books in the *My* series, including *My BlackBerry Curve*, *My Palm Pre*, *My Note II One*, *My DROID* (first and second editions), *My Motorola Atrix 4G*, *My BlackBerry PlayBook*, and *My HTC EVO 3D*.

Craig also enjoys high-horsepower, high-speed vehicles and tries very hard to keep to the speed limit while driving them.

Originally from Durban, South Africa, Craig has lived in the United Kingdom, the San Francisco Bay Area, and New Jersey, where he now lives with his wife, Karen, and a couple of cats.

Craig would love to hear from you. Feel free to contact Craig about your experiences with *My Samsung Galaxy Note II* at <http://www.CraigsBooks.info>.

All comments, suggestions, and feedback are welcome, including positive and negative.

**Guy Hart-Davis** is the author of approximately 100 computer books, including *Kindle Fire Geekery* and *How to Do Everything: Samsung Galaxy Tab*.

## Dedication

*"We shouldn't be surprised that conditions in the universe are suitable for life, but this is not evidence that the universe was designed to allow for life."*

—Stephen Hawking

## Acknowledgments

We would like to express our deepest gratitude to the following people on the *My Samsung Galaxy Note II* team who all worked extremely hard on this book:

- Michelle Newcomb, our acquisitions editor, who worked with us to give this project an edge
- Christian Kenyeres, our technical editor, who double-checked our writing to ensure the technical accuracy of this book
- Charlotte Kughen, our developmental editor, who developed the manuscript skillfully
- Karen Annett, who copy-edited the manuscript with a light touch
- Betsy Gratner, who kept the project rolling and on schedule
- TnT Design, who laid out the book beautifully

## We Want to Hear from You!

As the reader of this book, *you* are our most important critic and commentator. We value your opinion and want to know what we're doing right, what we could do better, what areas you'd like to see us publish in, and any other words of wisdom you're willing to pass our way.

We welcome your comments. You can email or write to let us know what you did or didn't like about this book—as well as what we can do to make our books better.

*Please note that we cannot help you with technical problems related to the topic of this book.*

When you write, please be sure to include this book's title and author as well as your name and email address. We will carefully review your comments and share them with the author and editors who worked on the book.

Email: [feedback@quepublishing.com](mailto:feedback@quepublishing.com)

Mail: Que Publishing  
ATTN: Reader Feedback  
800 East 96th Street  
Indianapolis, IN 46240 USA

## Reader Services

Visit our website and register this book at [quepublishing.com/register](http://quepublishing.com/register) for convenient access to any updates, downloads, or errata that might be available for this book.



In this chapter, you become familiar with the external features of the Galaxy Note II and the basics of getting started with the Android operating system. Topics include the following:

---

- Getting to know your Galaxy Note II's external features
- Getting to know your Galaxy Note II's S Pen (Stylus)
- Learning the fundamentals of Android 4.1 (Jelly Bean) and TouchWiz
- Setting up your Galaxy Note II for the first time
- Installing desktop synchronization software

## Prologue

# Getting to Know Your Galaxy Note II

Let's start by getting to know more about your Galaxy Note II by examining the external features, device features, and how the Android 4.1 operating system works.

In addition to Android 4.1 (Jelly Bean), this chapter covers the Samsung TouchWiz interface, which is overlaid on top of Android to adjust the way things look and function.

## Your Galaxy Note II's External Features

Becoming familiar with the external features of your Galaxy Note II is a good place to start because you will be using them often. This section covers some of the technical specifications of your Galaxy Note II, including the touchscreen, camera, and S Pen. There are many versions of the Samsung Galaxy Note II, but no matter which one you own or which wireless carrier you use to connect it, the exterior, functionality, and look and feel of the interface are exactly the same.



## Front



- **Proximity sensor**—Detects when you place your Galaxy Note II against your head to talk, which causes it to turn off the screen so that your ear doesn't inadvertently activate things on the screen.
- **Light sensor**—Adjusts the brightness of your Galaxy Note II's screen based on the brightness of the ambient light.
- **Earpiece**—The part you hold against your ear while on a call.
- **Indicator light**—Indicates new events (such as missed calls, new Facebook messages, or new emails).
- **Front camera**—1.9-megapixel front-facing camera that can be used for video chat, taking self-portraits, and even unlocking your Galaxy Note II using your face.

- **Touchscreen**—The Galaxy Note II has a 5.5" 720×1280 pixel Super AMOLED HD (Super Active-Matrix Organic Light-Emitting Diode) S-Stripe RGB screen that incorporates capacitive touch.
- **Back button**—Touch to go back one screen when using an application or menu. This is a touch-sensitive button.
- **Menu button**—Touch to see a context-aware menu of options based on the screen or app you are using.
- **Home button**—Press to go to the Home screen. The application that you are using continues to run in the background. Press and hold to see a list of recently used apps and switch between them. This is a physical button.

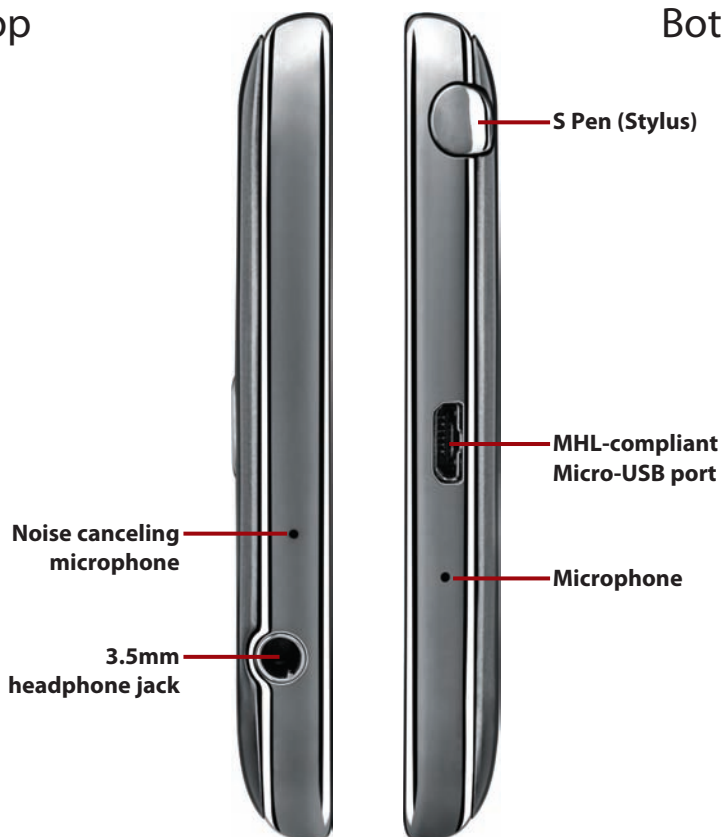


- **Volume up/down buttons**—Enables you to control the audio volume on calls and while playing audio and video.

- **Power button**—Allows you to wake up your Galaxy Note II by pressing once. Press and hold for one second to reveal a menu of choices. The choices enable you to put your Galaxy Note II into Silent mode, Airplane mode, or power it off completely.
- **Rear camera**—8-megapixel camera with autofocus that takes clear pictures close-up or far away.
- **LED (light-emitting diode) camera flash**—Helps to illuminate the surroundings when taking pictures in low light.
- **Speaker**—Produces audio when speakerphone is in use. Place your Galaxy Note II on a hard surface for the best audio reflection.
- **Back cover removal point**—Allows you to remove the back cover. Insert your fingernail and pull to remove the back cover. After you have removed the back cover, you can install or swap SIM cards, and insert or swap the Micro-SD memory card.

Top

Bottom



- **3.5mm headphone jack**—Plug in your Galaxy Note II or third-party headsets to enjoy music and talk on the phone.
- **Noise canceling microphone**—Used in conjunction with the regular microphone on phone calls to reduce background noise. This microphone is also used when you record videos.
- **MHL-compliant Micro-USB port**—You can use the Micro-USB port to synchronize your Galaxy Note II to your desktop computer and charge it, but because it is Mobile High-definition Link (MHL) compliant, you can use it to play movies on your TV via high-definition multimedia interface (HDMI) using a special cable or dock.
- **Microphone**—You use the microphone when you are on a call and holding your Galaxy Note II to your ear.
- **S Pen (Stylus)**—Pull the S Pen out of its holder to draw on the screen and interact with apps. Read more about the S Pen in the next section.

## S Pen

Your Samsung Galaxy Note II comes with a stylus, which Samsung calls the S Pen. The S Pen is stored in the Galaxy Note II on the right side and you pull it out from the lower right. This section covers some of the S Pen's features and functions.

### Getting to Know the S Pen

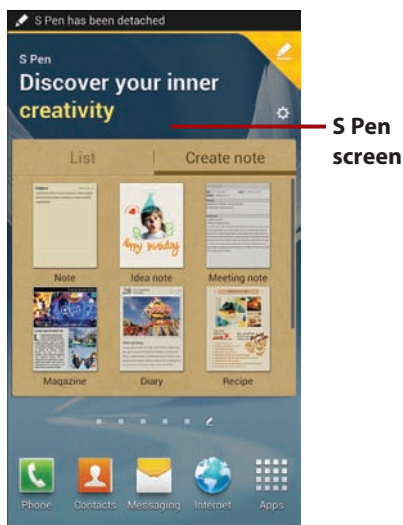
Let's take a look at the S Pen itself and learn about its features.



- **Stylus tip**—The S Pen stylus tip is what makes contact with the screen as you write and draw. The stylus tip is pressure sensitive so it knows how hard or soft you are pressing. This is particularly useful for drawing as pressure translates into line thickness.
- **S Pen button**—The S Pen button adds extra functionality to the S Pen. When you press the button as you drag the pen on the screen, you can perform functions, such as moving between screens, taking screenshots, and even cutting out parts of any screen.

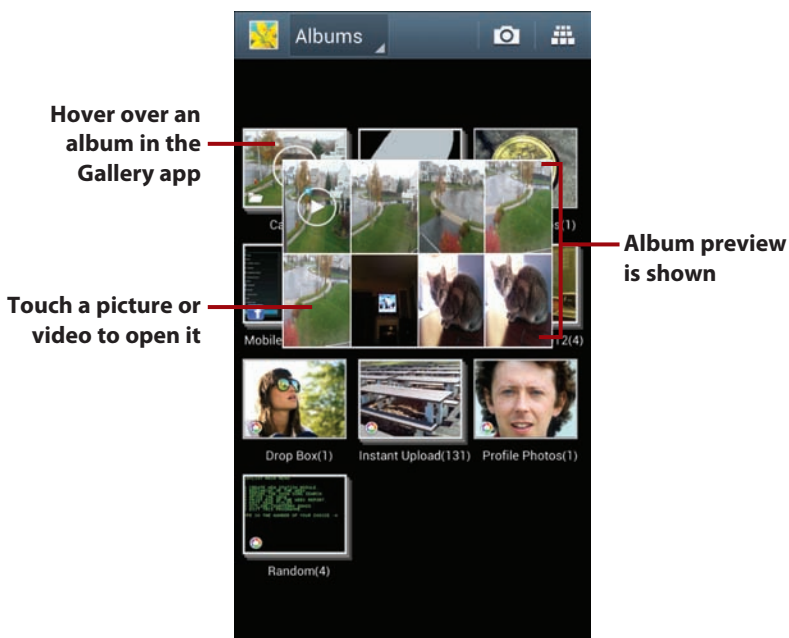
## Special S Pen Screen

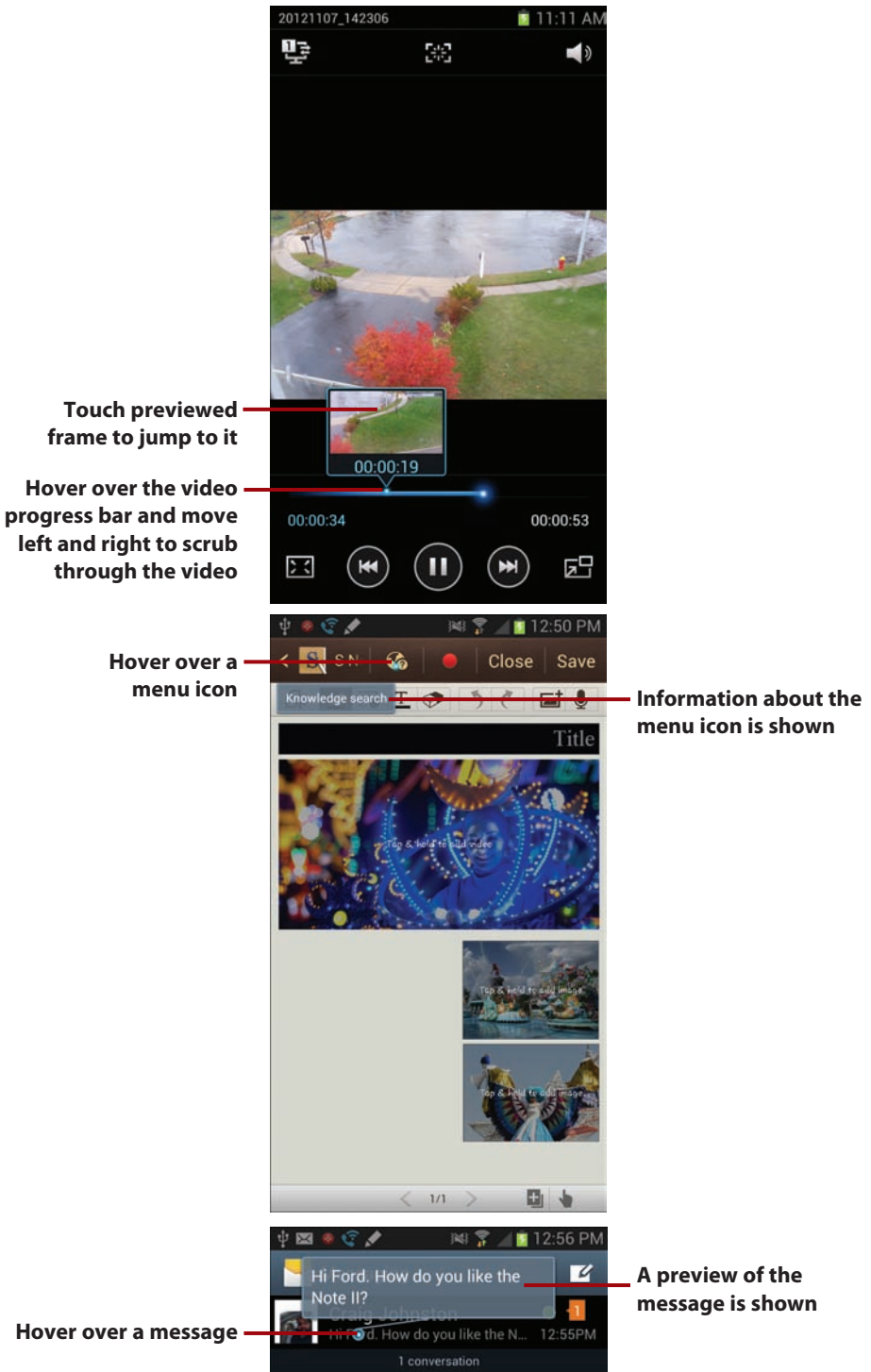
By default, when you remove the S Pen from your Galaxy Note II, a special S Pen screen displays. On that screen, you see the Create Note widget from the S Note app. If you want, you can remove this widget and place other widgets or app shortcuts that you want to appear when you remove your S Pen.



## Air View

Air View is a feature that shows you a preview of information about an object and enables you to interact with it when you hover the S Pen near the screen over an object that is Air View enabled. Here are some examples of using Air View.





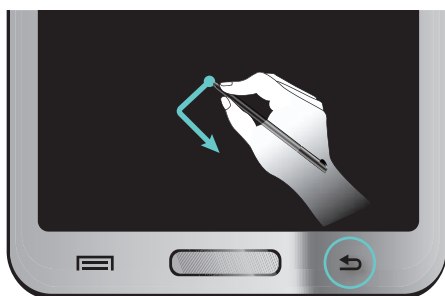
## *It's Not All Good*

### **Air View Is Not Always Available**

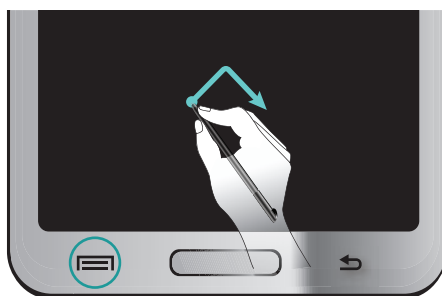
Apps must be specifically written to support Air View, which means that as of the writing of this book there are not very many apps you can use with Air View. For example, although you can use Air View to preview emails in the Email app (which is written by Samsung), Air View does not work in Gmail. Air View is also a little buggy because it sometimes does not work. For example, Air View is supposed to work in the Contacts app to preview contact information, but it does not. By the time you read this book, some updates might have addressed the bugginess of Air View, and vendors like Google might have updated their apps to add support for Air View.

## Gestures

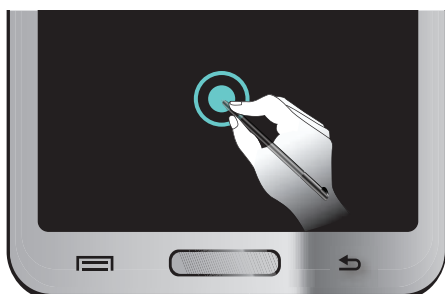
While holding the S Pen button, you can draw symbols on the screen to take actions such as going back to the previous screen or bringing up the menu. Here are some examples.



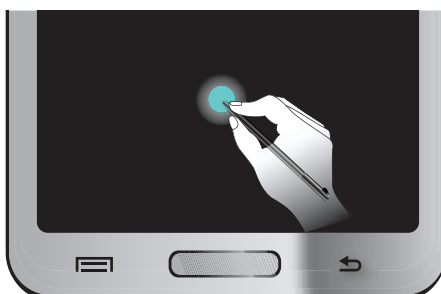
**Back gesture**



**Menu gesture**



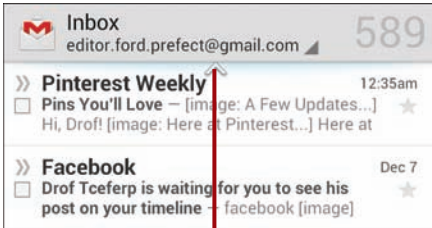
**Double-tap to create a new S Note**



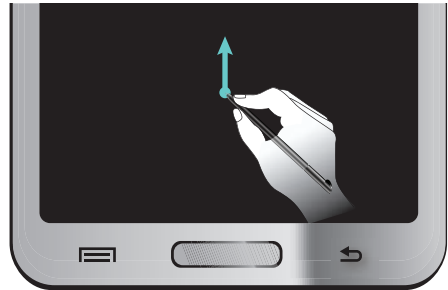
**Press and hold to take a screenshot**

## Scrolling Using the S Pen

You can scroll up and down by hovering your S Pen at the top or bottom of an area of the screen that scrolls, such as a message list. For this gesture, you must not press the S Pen button—just hover at the top or bottom of the scroll area. You see an arrow indicating that the scrolling gesture has been recognized.



**Hover to scroll up**

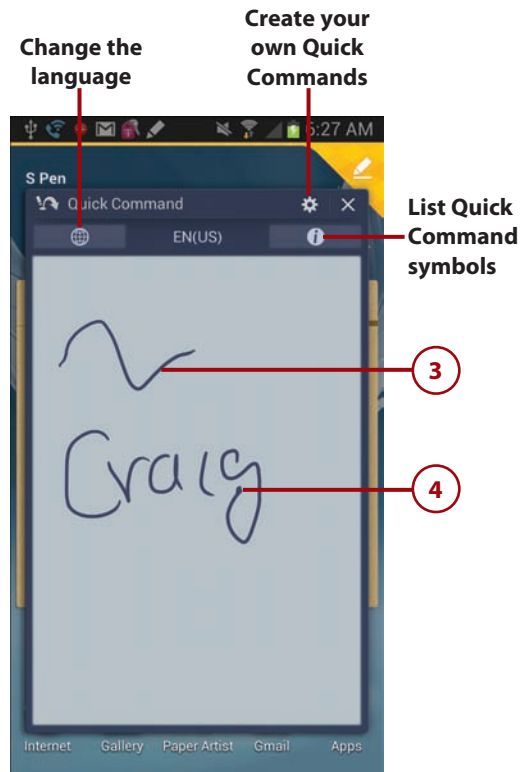


**Draw up to open Quick Commands**

## Quick Commands

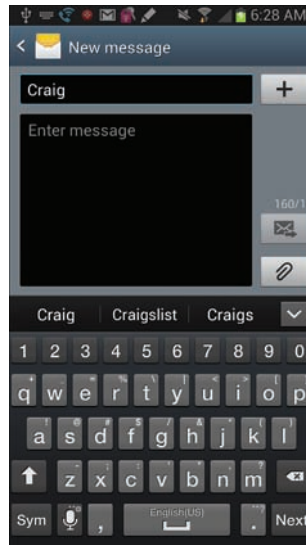
Quick Commands is a feature that enables you to draw symbols on the screen that cause apps to load or activate certain device features. You can even create your own Quick Command symbols.

1. While pressing the S Pen button, draw up from the bottom of the screen to activate Quick Commands.
2. Release the S Pen button.
3. Draw a Quick Command symbol. This example uses the symbol for composing a text message.
4. Write a keyword, such as a name, search term, or place, after the Quick Command symbol. In this example, we want to compose a text message to Craig so we write Craig.





- The command is executed and you should see the app load and your keyword acted upon. In the example, the Message app opens, and a new message is created for Craig.



## Default Quick Commands

When you first use Quick Commands, there are a few preloaded that you can use right away. They include searching the Internet for a search term, composing an email to someone, looking up an address in Google Maps, placing a call to someone, and sending a text message to someone.

## Grabbing Part of the Screen

Using your S Pen, you can grab any part of the screen as an image. To do that, simply press and continue holding the S Pen button. Draw around the part of the screen you want to capture. Release the S Pen button and the part of the screen inside the shape you have drawn is copied and placed in the Gallery app in an album called Screenshots. Because it is a regular image at that point, you can edit it or share it with your friends.

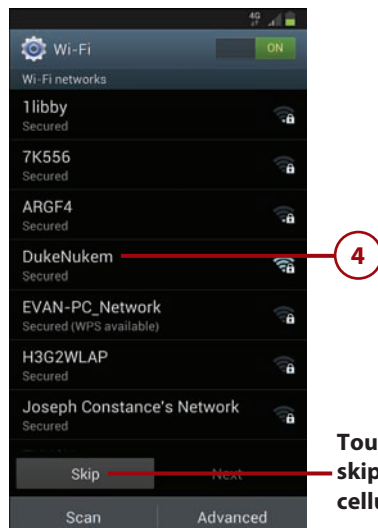
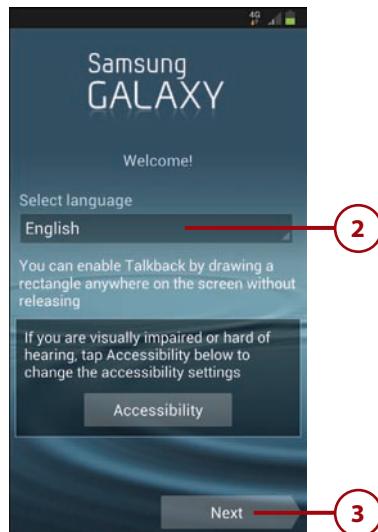


Draw around the area you want to capture

# First-Time Setup

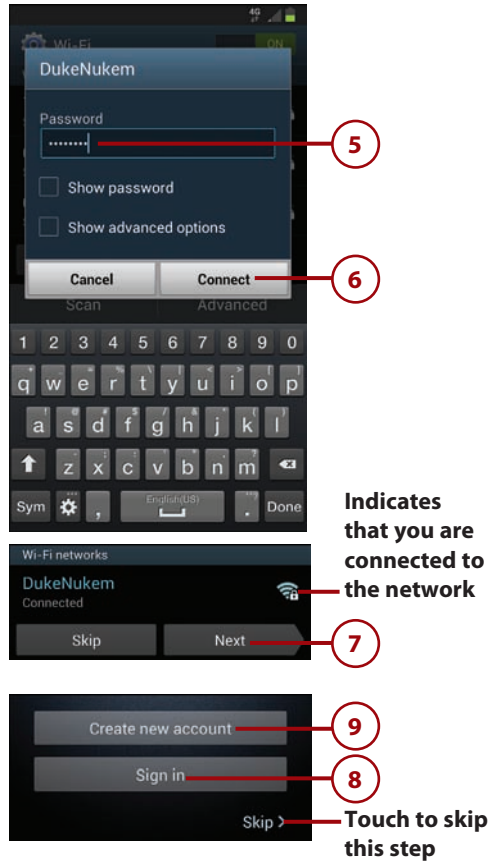
Before setting up your new Samsung Galaxy Note II, you should have a Google account because your Galaxy Note II running Android is tightly integrated into Google. When you have a Google account, you can store your content in the Google cloud, including any books and music you buy or movies you rent. If you do not already have a Google account, go to <https://accounts.google.com> on your desktop computer and sign up for one.

1. Touch and hold the Power button until you see the animation start playing.
2. Touch to change your language if needed.
3. Touch Next.
4. Touch a Wi-Fi network to connect. If you'd rather not connect to a Wi-Fi network, touch Skip and continue at step 8.



Touch to skip and use cellular data

5. Enter the password for the Wi-Fi network using the onscreen keyboard.
6. Touch Connect. Your Galaxy Note II connects to the Wi-Fi network.
7. Touch Next.
8. Touch to sign in to your Samsung account, if you have one, or touch Skip and jump to step 17.
9. Touch to create a new Samsung account, if you don't have one, or touch Skip and jump to step 17.

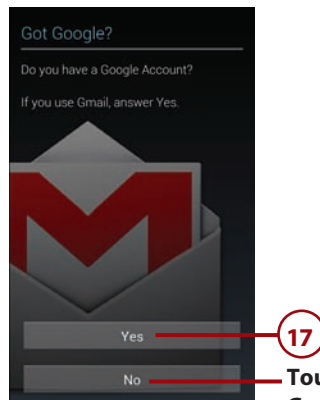
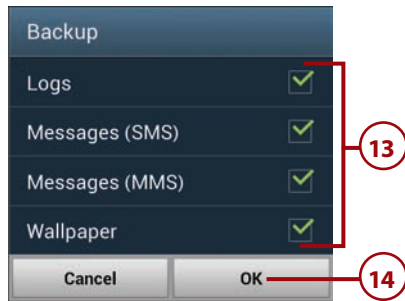
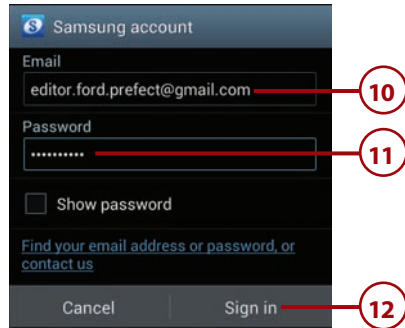


>>> Go Further

## DO I NEED A SAMSUNG ACCOUNT?

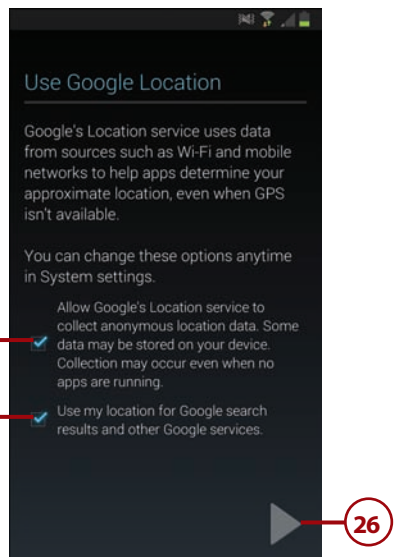
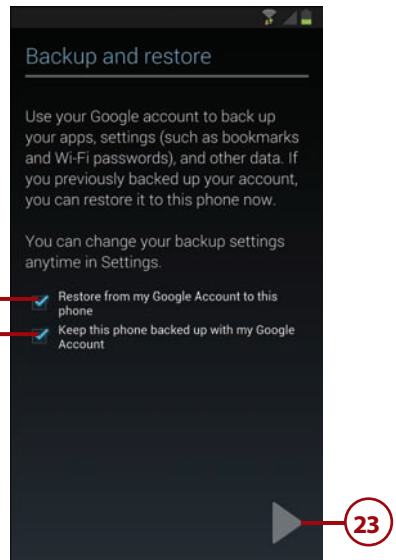
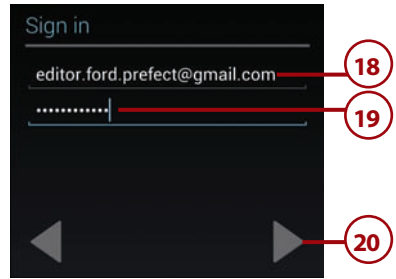
Android was designed to be used with a Google account. That Google account enables you access to the Google ecosystem of Android apps, music, movies, and books, plus your phone's settings are backed up to the Google cloud. If you change devices, your new device reverts back to the way you had your old device set up. A Samsung account does a similar thing, but it uses the Samsung ecosystem. Technically, you don't really need a Samsung account because Google provides you everything you need. However, Samsung uses the Samsung account to enable certain Samsung-specific features on your Galaxy Note II (and other Samsung Android phones and tablets). These include Group Cast and Share Shot, which both involve sharing content in a group setting.

10. Enter the email address you used for your Samsung account.
11. Enter your Samsung account password.
12. Touch Sign In.
13. Select the information you want to be backed up to the Samsung cloud.
14. Touch OK.
15. Touch to first restore data previously backed up in the Samsung cloud to your Galaxy Note II before continuing.
16. Touch Next.
17. Touch Yes to log in to your Google account.



**Touch to create a Google account**

18. Enter your Google account email address (your Gmail address).
19. Enter your Google account password.
20. Touch to continue.
21. Check this box to restore settings previously saved in the Google cloud to your new Galaxy Note II before continuing.
22. Check this box to keep data on your Galaxy Note II backed up to the Google cloud.
23. Touch to continue.
24. Check this box if you are okay with Google collecting information about your geographic location at any time. Although this information is kept safe, if you are concerned about privacy rights, uncheck this box.
25. Check this box if you are okay with Google using your geographic location for Google searches and other Google services.
26. Touch to continue.



27. Touch to create a Dropbox account.
28. Touch to sign in to your existing Dropbox account.
29. Touch to skip using Dropbox and continue.

## Do I Need Dropbox?

Dropbox is a company that provides cloud storage data. This means that you can use its storage to store your pictures, videos, and other files privately, and choose to share some of that content with your friends. You do not need to use Dropbox on your Galaxy Note II. You can choose other cloud storage companies like Box.net, and even Google's cloud storage.

30. Check the box to enable Easy mode, or leave it unchecked to skip Easy mode.

## What Is Easy Mode?

When you enable Easy mode, your Android Home screens are filled with widgets that are meant to help you use your Galaxy Note II. These widgets include Favorite Settings, Favorite Apps, and Favorite Contacts. Later, you can disable Easy mode if you feel it is too intrusive.

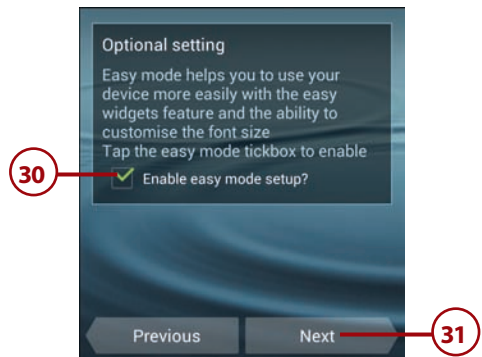
31. Touch Next to continue.
32. Touch to choose a different font size for displaying email, contacts, and text messages, or leave it set to Normal.
33. Touch Finish.



28

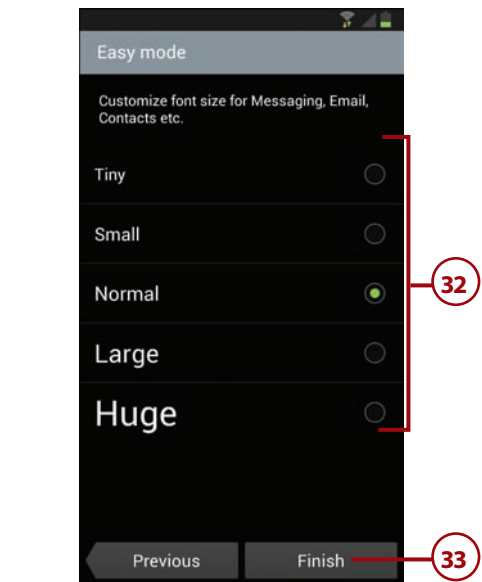
27

29



30

31



32

33

# Fundamentals of Android 4.1 and TouchWiz

Your Galaxy Note II is run by an operating system called Android. Android was created by Google to run on any smartphone, and your Galaxy Note II uses a version called Android 4.1 (or Jelly Bean). Samsung has made many changes to this version of Android by adding extra components and modifying many standard Android features. They call this customization TouchWiz.

## The Unlock Screen

If you haven't used your Galaxy Note II for a while, the screen goes blank to conserve battery power. This task explains how to interact with the Lock screen.

1. Press the Power button or Home button to wake up your Galaxy Note II.
2. Slide your finger across the screen from left to right (or right to left) to unlock your Galaxy Note II.
3. Touch the Missed Calls icon and slide it in any direction to unlock your Galaxy Note II and jump straight to the missed calls list. This icon is visible only when you have missed calls.
4. Touch the Missed Text Messages icon and slide it in any direction to unlock your Galaxy Note II and jump straight to the missed text messages list. This icon is visible only when you have missed text messages.
5. Touch an app icon along the bottom of the screen and slide it up to unlock your Galaxy Note II and launch that app.



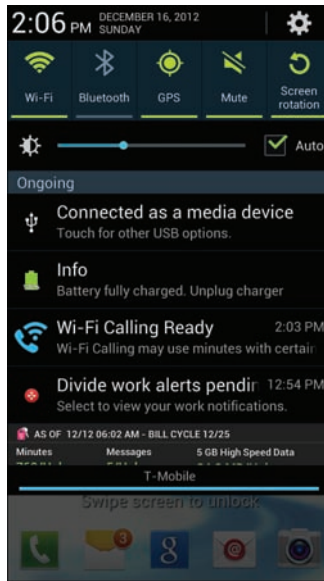


---

## Working with Notifications and Settings on the Lock Screen

You can work with notifications and settings right on the Lock screen. If you see notifications in the Notification bar, pull down the Notification bar to view and clear them. Touching a notification takes you straight to the app that created them. Read more about the Notification bar later in this section.

---



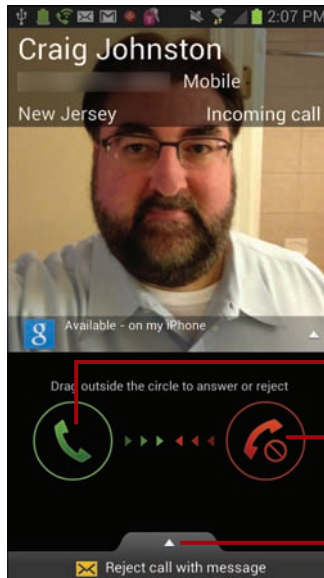
**Swipe down to see notifications and settings**

---

## Answering a Call from the Lock Screen

If your Galaxy Note II is locked when a call comes in, you have three choices: Drag the green icon to answer the incoming call; drag the red icon to reject the incoming call and send it straight to voice mail; or drag up from the bottom of the screen to reject the call and send a preset text message (SMS) to the caller.

---



**Drag to answer**

**Drag to reject**

**Slide up to reject and send a text message**



## The Home Screen(s)

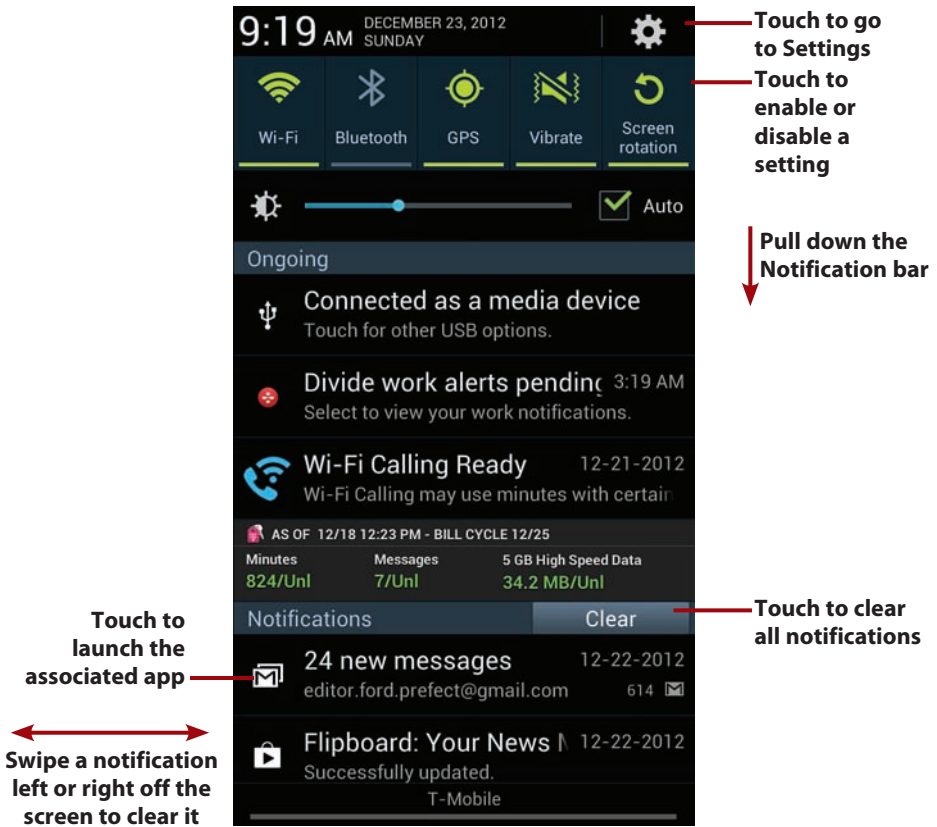
After you unlock your Galaxy Note II, you are presented with the middle Home screen. Your Galaxy Note II has five Home screens. The Home screens contain application shortcuts, a Launcher icon, Notification bar, Shortcuts, Favorites Tray, and widgets.



- **Notification bar**—The Notification bar shows information about Bluetooth, Wi-Fi, and cellular coverage, as well as the battery level and time. The Notification bar also serves as a place where apps can alert or notify you using notification icons.
- **Notification icons**—Notification icons appear in the Notification bar when an app needs to alert or notify you of something. For example, the Phone app can show the Missed Calls icon indicating that you missed a call.

## Working with Notifications

To interact with notifications that appear in the Notification bar, place your finger above the top of the screen and drag to pull down the Notification bar and reveal the notifications. Swipe individual notifications off the screen to the left or right to clear them one by one, or touch Clear to clear all of them at once. The Notification bar also includes Quick Settings such as the ability to turn on or off Wi-Fi or Bluetooth.



- **Widget**—Widget are applications that run directly on the Home screens. They are specially designed to provide functionality and real-time information. An example of a widget is one that shows the current weather or provides a search capability. Widgets can be moved and sometimes resized.
- **App shortcut**—When you touch an app shortcut, the associated app launches.

---

## Creating App Shortcuts

Touch the Launcher icon to see all of your apps. Touch and hold on the app you want to make a shortcut for. After the Home screens appear, drag the app shortcut to the location you want the shortcut to be on the Home screen, drag it to an App folder, or drag it left or right off the screen to move between Home screens. Release the icon to place it.



- 
- **App folders**—You can group apps together in a folder as a way to organize your apps and declutter your screen.

## Creating App Folders

To create a new App folder, touch and hold the first app shortcut you want in your folder. When the Create Folder icon appears, drag the app shortcut to that icon and release it. After you give your App folder a name, the folder displays on your Home screen. Now you can drag other app shortcuts into that folder. To open the folder, touch it to reveal the shortcuts in that folder.

**Drag an app shortcut to the Create Folder icon**



Create folder

Enter folder name

Work

Cancel

OK

**Give your folder a name**

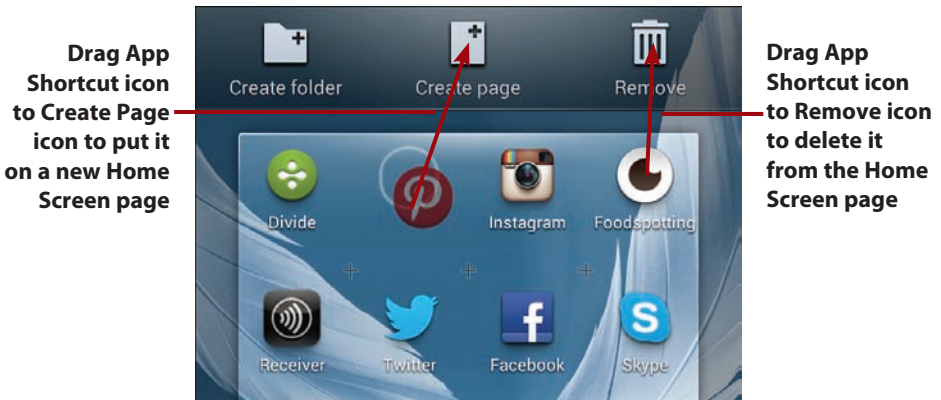


**Drag app shortcuts to an existing folder**

- **Favorites Tray**—The Favorites Tray is visible on all Home screens. You can drag apps to the Favorites Tray so that they are available no matter which Home screen you are looking at. Apps in the Favorites Tray can be rearranged and removed.
- **Launcher icon**—Touch to show application icons for all applications that you have installed on your Galaxy Note II.

## Creating a New Home Screen and Removing an App Shortcut

If you want to create a new Home screen, touch and hold an App Shortcut icon. When the three action icons appear, drag your App Shortcut icon to the Create Page icon, and the shortcut is placed on a brand-new Home Screen page. To remove an App Shortcut icon, drag it to the Remove icon.



## Use the Touchscreen

You interact with your Galaxy Note II mostly by touching the screen, which is known as making gestures on the screen. You can touch, swipe, pinch, double-tap, and type.



**Touch**—To start an application, touch its icon. Touch a menu item to select it. Touch the letters of the onscreen keyboard to type.



**Touch and hold**—Touch and hold to interact with an object. For example, if you touch and hold a blank area of the Home screen, a menu pops up. If you touch and hold an icon, you can reposition it with your finger.



**Drag**—Dragging always starts with a touch and hold. For example, if you touch the Notification bar, you can drag it down to read all of the notification messages.



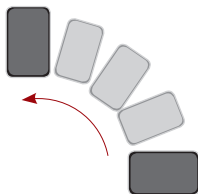
**Swipe or slide**—Swipe or slide the screen to scroll quickly. To swipe or slide, move your finger across the screen quickly. Be careful not to touch and hold before you swipe or you will reposition something. You can also swipe to clear notifications or close apps when viewing the recent apps.



**Double-tap**—Double-tapping is like double-clicking a mouse on a desktop computer. Tap the screen twice in quick succession. For example, you can double-tap a web page to zoom in to part of that page.



**Pinch**—To zoom in and out of images and pages, place your thumb and forefinger on the screen. Pinch them together to zoom out or spread them apart to zoom in (unpinching). Applications like Browser, Gallery, and Maps support pinching.



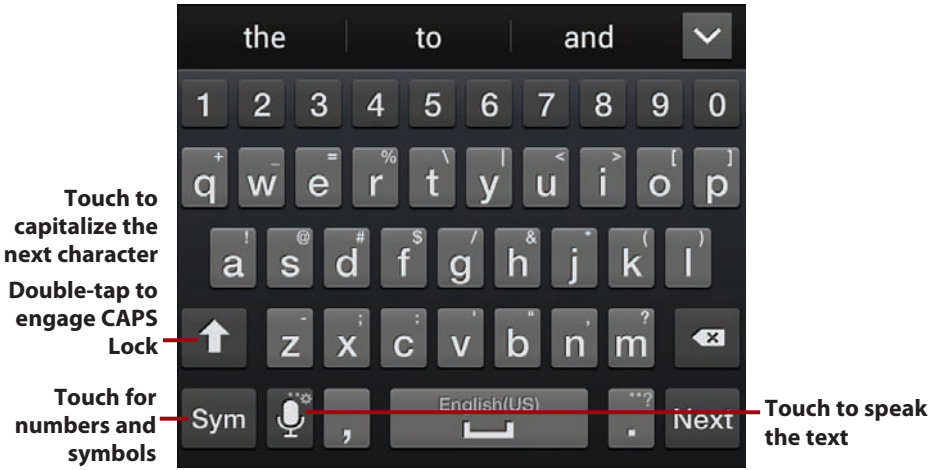
**Rotate the screen**—If you rotate your Galaxy Note II from an upright position to being on its left or right side, the screen switches from Portrait view to Landscape view. Most applications honor the screen orientation. The Home screens and Launcher do not.

## Use the Keyboard

Your Galaxy Note II has a virtual or onscreen keyboard for those times when you need to enter text. You might be a little wary of a keyboard that has no physical keys, but you will be pleasantly surprised at how well it works.

Some applications automatically show the keyboard when you need to enter text. If the keyboard does not appear, touch the area where you want to type and the keyboard slides up ready for use.

Using the virtual keyboard as you type, your Galaxy Note II makes word suggestions. Think of this as similar to the spell checker you would see in a word processor. Your Galaxy Note II uses a dictionary of words to guess what you are typing. If the word you were going to type is highlighted, touch space or period to select it. If you can see the word in the list but it is not highlighted, touch the word to select it.



To make the next letter you type a capital letter, touch the Shift key. To make all letters capitals (or CAPS), double-tap the Shift key to engage CAPS Lock. Touch Shift again to disengage CAPS Lock.

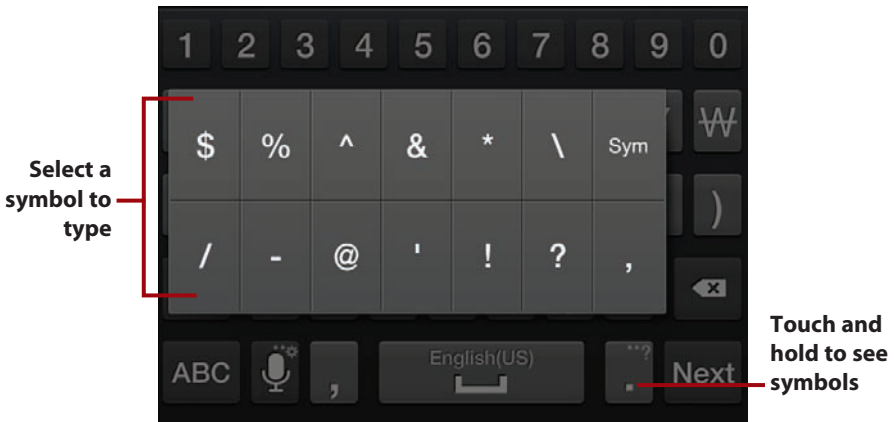
To type numbers or symbols, touch the Symbols key.

When on the Numbers and Symbols screen, touch the Symbols key to see extra symbols. There are three screens of symbols. Touch the ABC key to return to the regular keyboard.



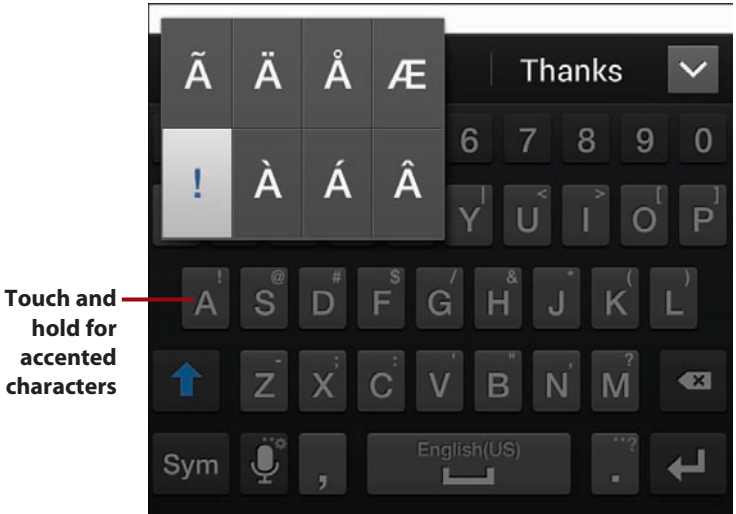
### Quick Access to Symbols

If you want to type commonly used symbols, touch and hold the period key. A small window opens with those common symbols. Slide your finger over the symbol you want to type, and lift it to type that symbol.





To enter an accented character, touch and hold any vowel or C, N, or S keys. A small window opens enabling you to select an accented or alternative character. Slide your finger over the accented character and lift your finger to type it.

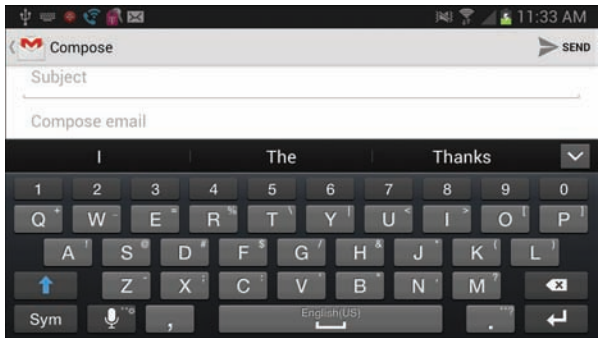


To reveal other alternative characters, touch and hold any other letter, number, or symbol.

---

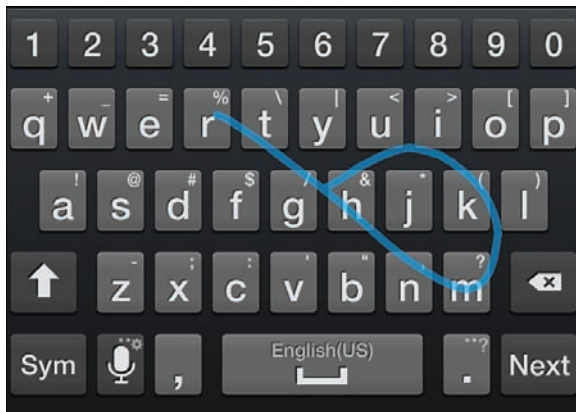
## Want a Larger Keyboard?

Turn your Galaxy Note II sideways to switch to a landscape keyboard. The landscape keyboard has larger keys and is easier to type on.



## Swipe to Type

Instead of typing on the keyboard in the traditional way by touching each letter individually, you can swipe over the letters in one continuous movement. This is called Continuous Input. It is enabled by default; to use it, just start swiping your finger over the letters of the word you want to type. Lift your finger after each word. No need to worry about spaces because your Galaxy Note II adds them for you. To type a double letter (as in the word pool), loop around that letter on the keyboard.



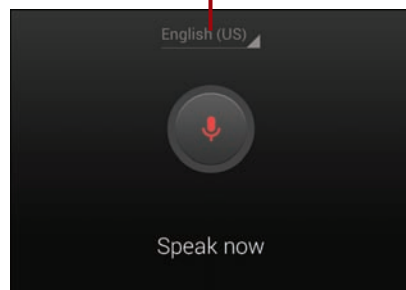
## Dictation—Speak Instead of Type

Your Galaxy Note II can turn your voice into text. It uses Google's speech recognition service, which means that you must have a connection to the cellular network or a Wi-Fi network to use it.

1. Touch the microphone key.
2. Wait until you see Speak Now and start speaking what you want to be typed. You can speak the punctuation by saying "comma," "question mark," "exclamation mark," or "exclamation point."



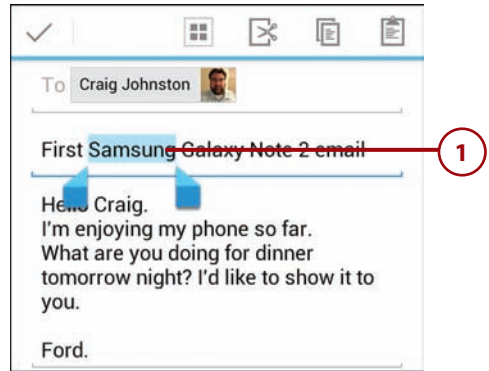
**Touch to select a different dictation language**



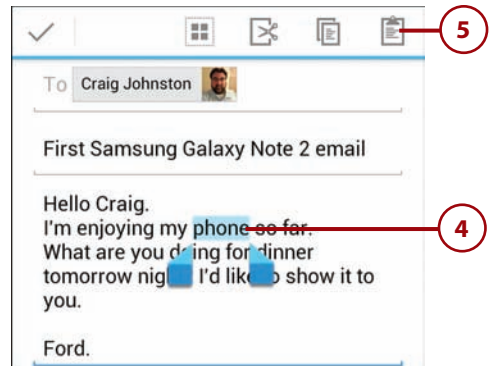
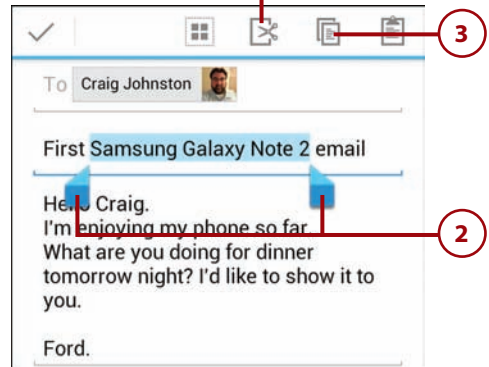
## Edit Text

After you enter text, you can edit it by cutting, copying, or pasting the text. This task describes how to select and copy text so you can paste over a word with the copied text.

1. While you are typing, touch and hold a word you want to copy.
2. Slide the blue end markers until you have selected all of the text you want to copy.
3. Touch to copy the text.
4. Touch and hold the word you want to paste over.
5. Touch to paste what you copied earlier.

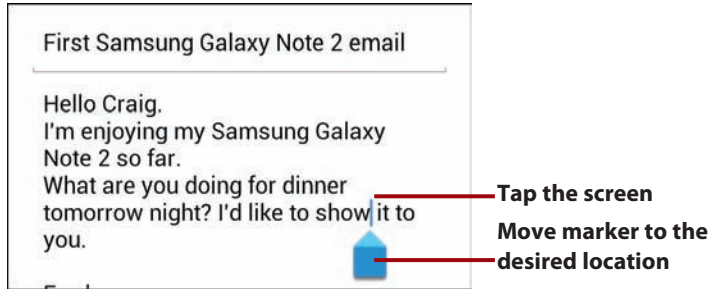


**Touch to cut the text**



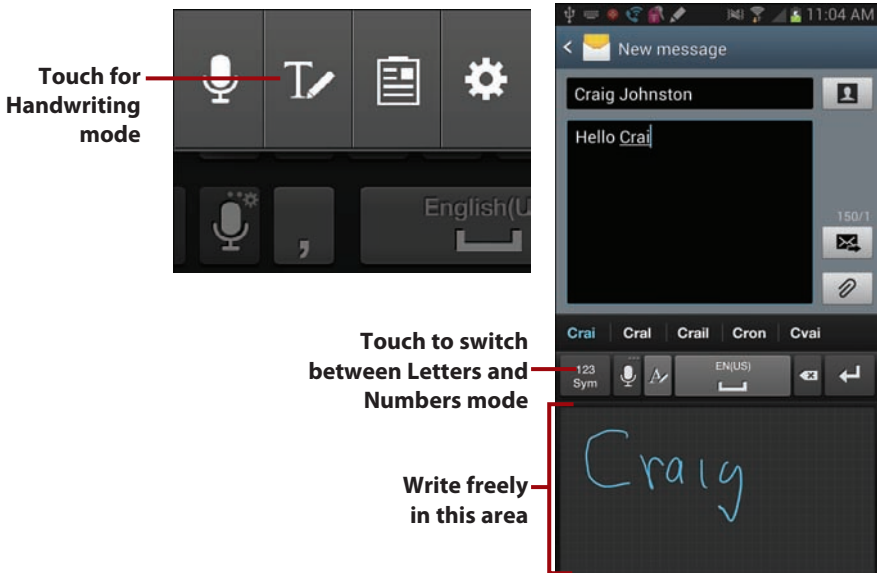
## Placing a Cursor

You can also simply place a cursor on the screen and move it around to do manual text editing, such as backspace to delete letters or manually insert a new word. To do this, tap on the screen in the text area. A single blue marker displays; drag that marker to the point in the text you want to make changes to. Now start typing or tap backspace, and the action occurs at the cursor position.



## Writing Instead of Typing

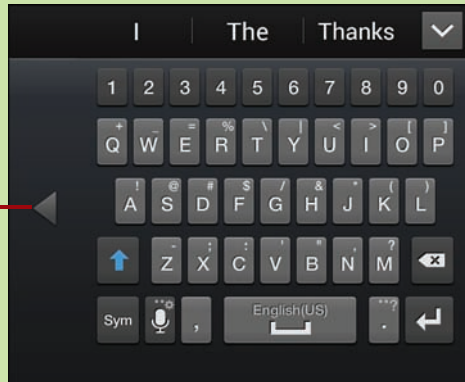
As discussed earlier in this chapter, your Galaxy Note II comes with the S Pen stylus. Instead of typing on the keyboard, you can use handwriting recognition to write. To enable Handwriting mode, pull out the S Pen from its holder and then touch and hold the Microphone button. Touch the Handwriting icon to enable Handwriting mode. Now write on the screen.



## ONE-HANDED TYPING

Your Galaxy Note II is a pretty large phone and unlike smaller phones that have 4-inch screens, you cannot type with one hand on your Galaxy Note II. Samsung addresses this by enabling you to put the keyboard into one-handed typing mode. This mode squashes the keyboard to the left or right of the screen so that you can type with one thumb. To enable one-handed mode, touch and hold the Microphone button and then touch the Settings icon (the cog). Check the box next to One-Handed Operation. Touch the Back key to return to your keyboard, and you'll see that it is now in one-handed mode. Touch the arrow to switch between left-handed and right-handed modes.

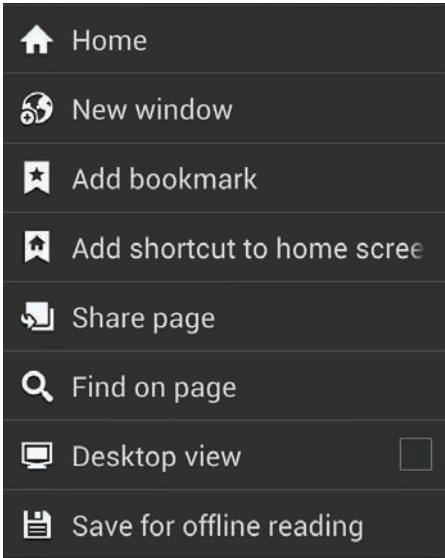
**Touch to switch  
between left-handed  
and right-handed  
modes**



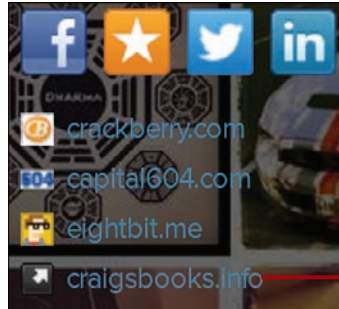
## Menus

Your Galaxy Note II has two types of menus: app menus and context menus. All applications use an app menu. To see the app menu, touch the physical Menu button, which is to the left of the Home button.

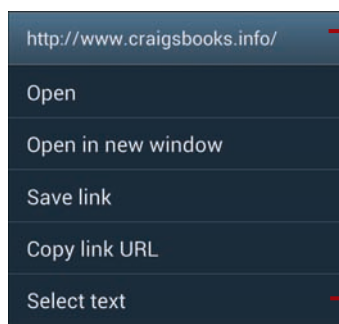
A context menu applies to an item on the screen. If you touch and hold something on the screen (in this example, a link on a web page), a context menu appears. The items on the context menu differ based on the type of object you touched.



**App menu**



**Touch and hold a link to reveal the link context menu**



**Touch an item in the menu**

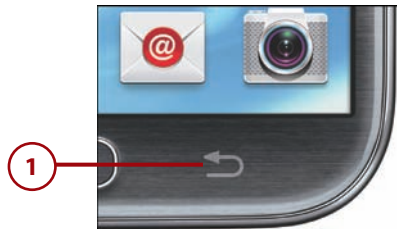
## Run Two Apps at the Same Time

Your Galaxy Note II has a feature called Multi Window that allows certain apps to run on the same screen at the same time.

1. Press and hold the Back button.
2. Drag an app onto the screen but keep holding it.

## Not All Apps Support Multi Window

When you touch Edit to add more apps to the list of Multi Window apps, remember that apps must be specially written to take advantage of Multi Window mode. This means that you might not see the apps you are looking for until the developer updates the app to support Samsung's Multi Window mode.



**Scroll up and down to see all apps**

**2**

**Add more apps to the list**



3. Drag the app to either the top or bottom half of the screen and release it.
4. Drag the bar up or down to give more or less room to each app.
5. Touch the bar to reveal the Swap and Full Screen icons.
6. Touch to swap the position of the apps on the screen.
7. Touch to make the selected app full screen.



## Switch Between Apps

You can switch between running apps and close apps using the multitasking feature.

1. Press and hold the Home button.
2. Scroll up and down the list of running apps.
3. Touch an app to switch to it.
4. Swipe an app left or right off the screen to close it.



## Installing Synchronization Software

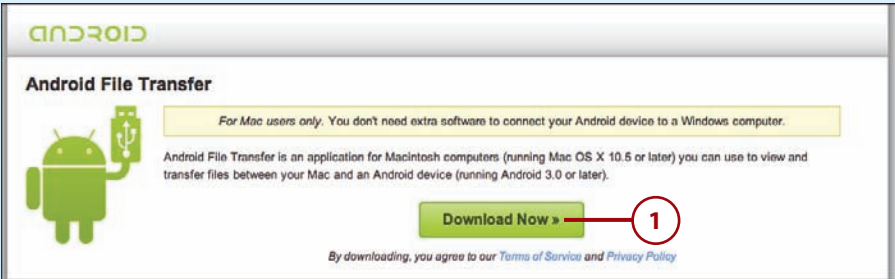
Because your Galaxy Note II is tightly integrated with Google and its services, all media that you purchase on your phone is stored in the Google cloud and accessible anywhere, anytime. However, you might have a lot of music on your computer and need to copy that to your Google cloud. To do that, you need to install the Google Music Manager software or the Android File Transfer app for your Mac to copy any file back and forth.



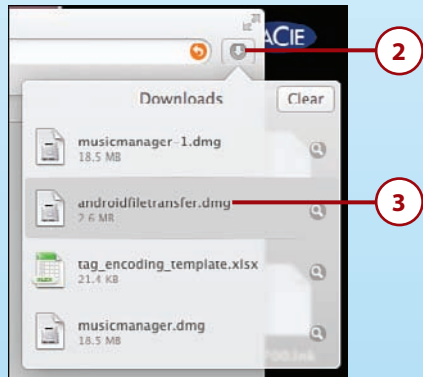
## Install Android File Transfer (Apple Mac OS X)

You only need the Android File Transfer app when using a Samsung Android phone (like your Galaxy Note II) on an Apple Mac running OS X.

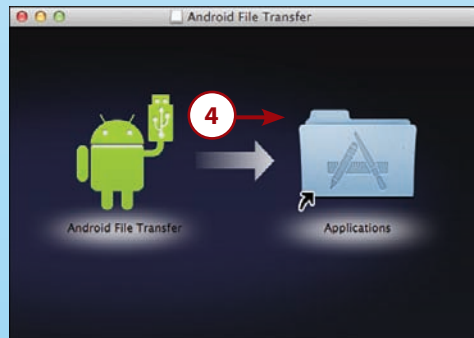
1. From your Mac, browse to <http://www.android.com/filetransfer/> and download the Android File Transfer app.



2. Click the Downloads icon.
3. Double-click the app in your Safari Downloads.



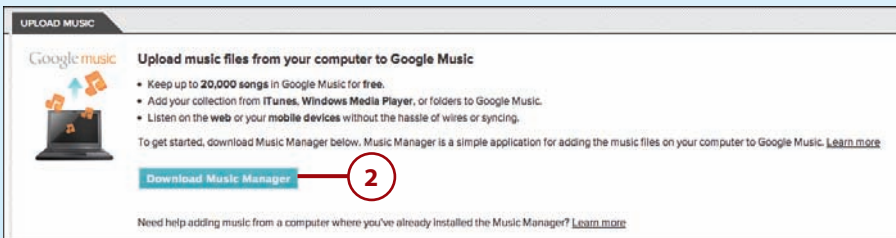
4. Drag the green Android to the Applications shortcut to install the app.



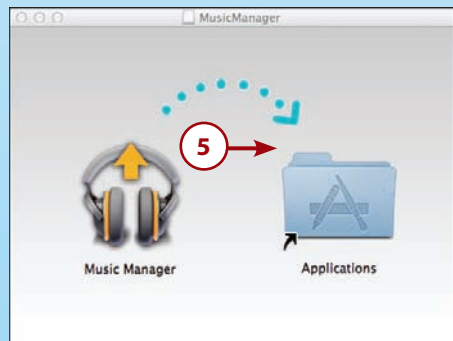
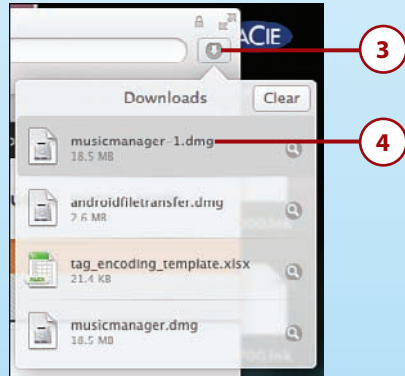
## Install Google Music Manager (Apple Mac)

Don't install Google Music Manager unless you plan to upload files from your computer to the Google Music cloud.

1. Visit [https://music.google.com/music/listen#manager\\_pl](https://music.google.com/music/listen#manager_pl) from your desktop web browser and log in to your Google account if you're prompted.
2. Click to download Music Manager.



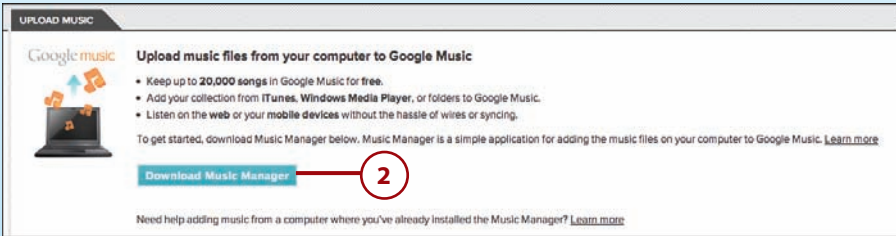
3. Click the Downloads icon.
4. Double-click the app in your Safari Downloads.
5. Drag the Music Manager icon to the Applications shortcut to install the app.
6. Double-click the Music Manager icon in the Applications folder.
7. Skip to the "Configure Music Manager" section to complete the installation.



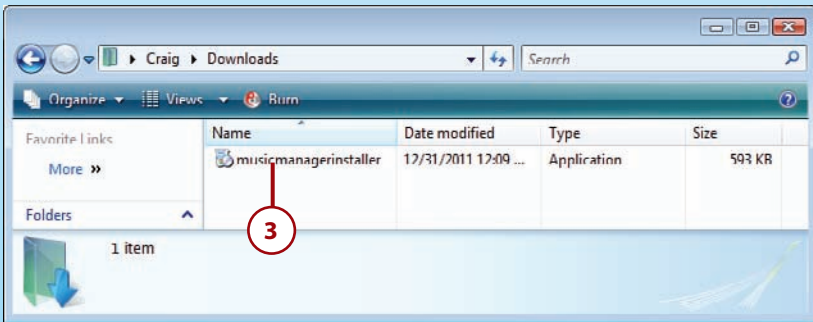
## Install Google Music Manager (Windows)

Don't install Google Music Manager unless you plan to upload files from your computer to the Google Music cloud.

1. Visit [https://music.google.com/music/listen#manager\\_pl](https://music.google.com/music/listen#manager_pl) from your desktop web browser and log in to your Google account if you're prompted.
2. Click to download Music Manager.



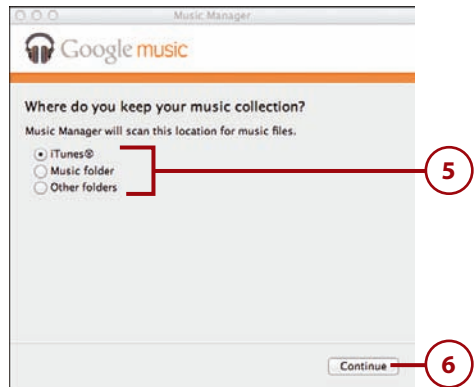
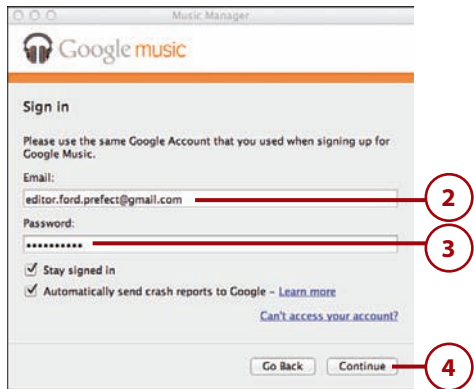
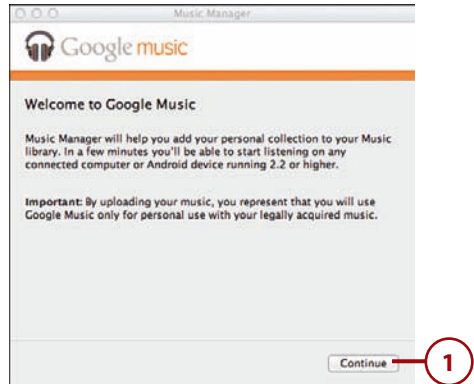
3. Double-click the app in your Downloads folder.



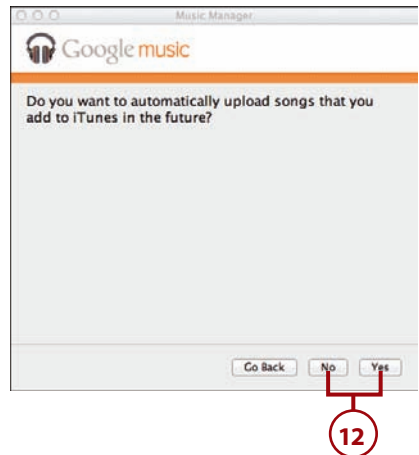
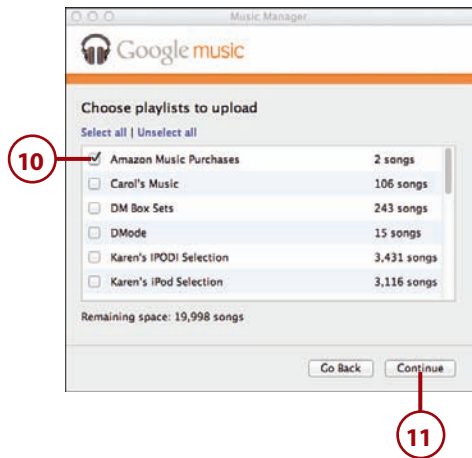
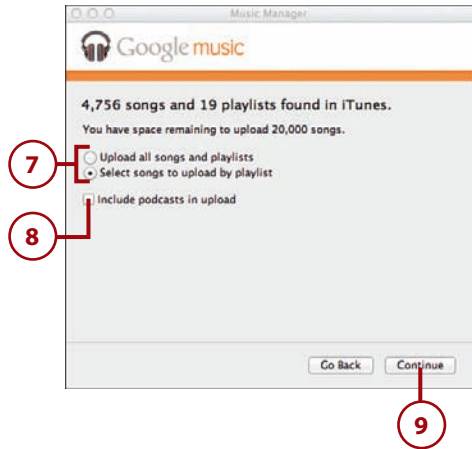
4. Skip to the "Configure Music Manager" section to complete the installation.

## Configure Music Manager (Windows and Apple Mac)

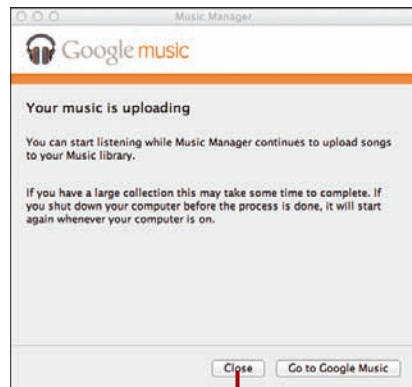
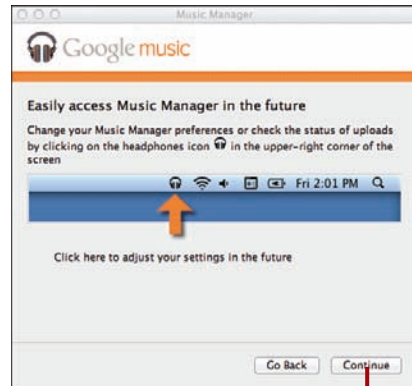
1. Click Continue.
2. Enter your Google (Gmail) email address.
3. Enter your Google (Gmail) password.
4. Click Continue.
5. Choose where you keep your music.
6. Click Continue.



7. Choose whether to upload all of your music or just some of your playlists. Remember that you can only upload 20,000 songs for free. Skip to step 12 if you chose to upload all music.
8. Check if you want to also upload podcasts.
9. Click Continue.
10. Select one or more playlists of music.
11. Click Continue.
12. Choose whether you want to automatically upload any new music that is added to your computer.



13. Click Continue.
14. Click Close.





Choose a new wallpaper

Set wallpaper

In this chapter, you find out how to customize your Galaxy Note II to suit your needs and lifestyle. Topics include the following:

---

- Using wallpapers and live wallpapers
- Replacing the keyboard
- Adjusting sound and display settings
- Setting region and language

# 2

## Customizing Your Galaxy Note II

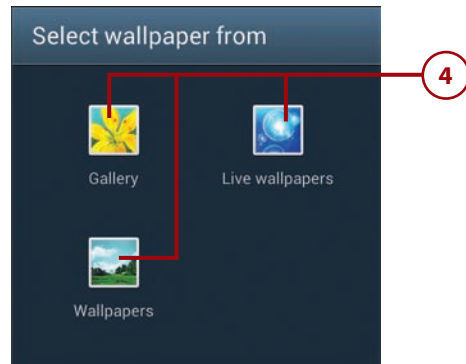
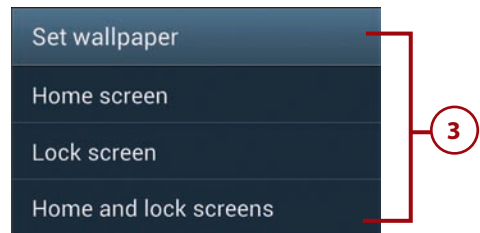
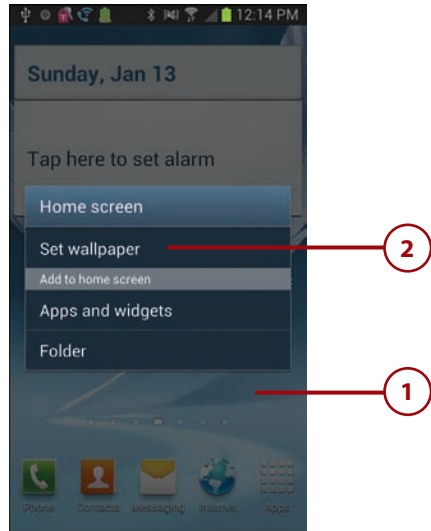
Your Galaxy Note II arrives preconfigured to appeal to most buyers; however, you might want to change the way some of the features work, or even personalize it to fit your mood or lifestyle. Luckily your Galaxy Note II is customizable.



## Changing Your Wallpaper

Your Galaxy Note II comes preloaded with a cool wallpaper. You can install other wallpapers, use live wallpapers that animate, and even use pictures in the Gallery application as your wallpaper.

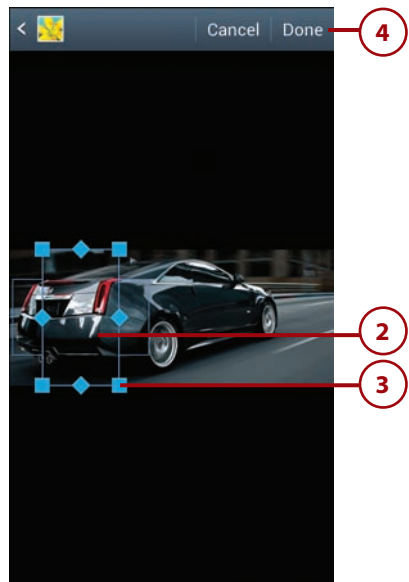
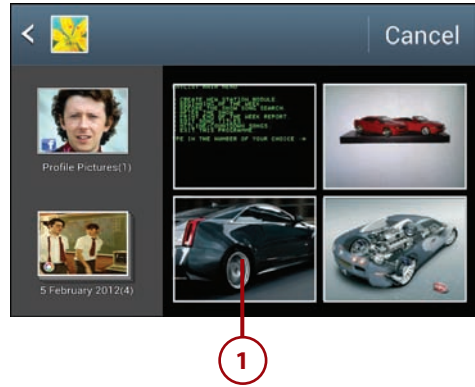
1. Touch and hold in an open area on the Home screen.
2. Touch Set Wallpaper.
3. Select where you want to change the wallpaper.
4. Touch the type of wallpaper you want to use. Use the steps in one of the following three sections to select your wallpaper.



## Wallpaper from Gallery Pictures

You can use any picture in your Gallery as a wallpaper.

1. Select the photo you want to use as your wallpaper.
2. Move the crop box to the part of the photo you want to use.
3. Adjust the size of the crop box to include the part of the photo you want.
4. Touch Done to use the cropped portion of the photo as your wallpaper.



## Live Wallpaper

Live wallpaper is wallpaper with some intelligence behind it. It can be a cool animation or even an animation that keys off things such as the music you are playing on your Galaxy Note II, or it can be something simple such as the time. There are some very cool live wallpapers in Google Play that you can install and use.

1. Touch the live wallpaper you want to use. This example uses the Star Trek: Red Alert live wallpaper.
2. Touch to see and change the live wallpaper settings.
3. Touch Set Wallpaper to use the live wallpaper.

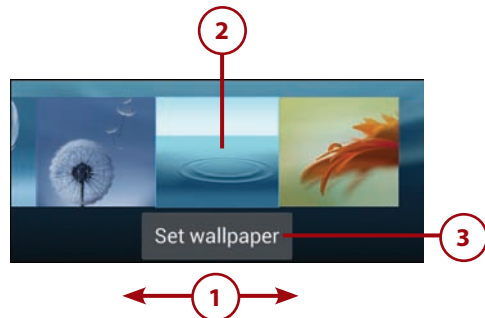
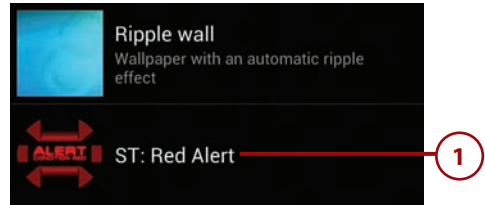
## Finding More Wallpaper

You can find wallpaper or live wallpaper in Google Play. Open Google Play and search for “wallpaper” or “live wallpaper.” Read more on how to use Google Play in Chapter 11, “Working with Android Apps.”

## Wallpaper

Choose a static wallpaper.

1. Scroll left and right to see all of the wallpapers.
2. Touch a wallpaper to preview it.
3. Touch Set Wallpaper to use the wallpaper.



# Changing Your Keyboard

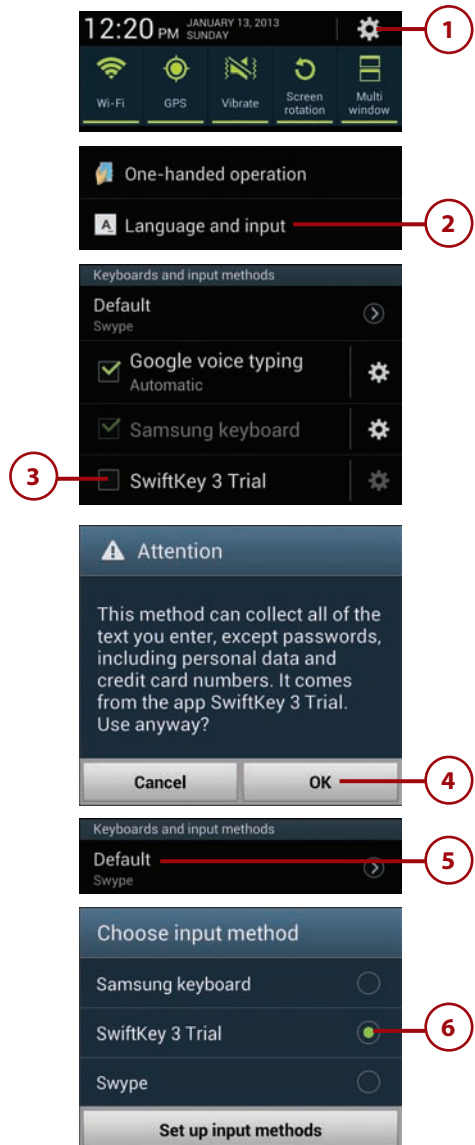
If you find it hard to type on the standard Galaxy Note II keyboard, or you just want to make it look better, you can install replacement keyboards. You can download free or purchase replacement keyboards from Google Play. Make sure you install a keyboard before following these steps.

1. Pull down the notification bar and touch the Settings icon.
2. Touch Language and Input.
3. Check the box next to a keyboard you have previously installed from the Google Play store (in this example, we used SwiftKey 3) to make that keyboard available for use.
4. Touch OK to change the input method.

## Doing Your Research

When you choose a different keyboard in step 3, the Galaxy Note II gives you a warning telling you that nonstandard keyboards have the potential for capturing everything you type. Do your research on any keyboards before you download and install them.

5. Touch Default to change the default keyboard to the one you have just enabled.
6. Touch the name of your new keyboard to select it to be the default.



## What Can You Do with Your New Keyboard?

Keyboards you buy in Google Play can do many things. They can change the key layout, change the color and style of the keys, offer different methods of text input, and even enable you to use an old T9 predictive input keyboard that you might have become used to when using an old “dumb phone” that only had a numeric keypad.

## Adding Widgets to Your Home Screens

Some applications that you install come with widgets that you can place on your Home screens. These widgets normally display real-time information, such as stocks, weather, time, and Facebook feeds. Your Galaxy Note II also comes preinstalled with some widgets. Here is how to add and manage widgets.

### Add a Widget

Your Galaxy Note II should come preinstalled with some widgets, but you might also have some extra ones that have been added when you installed other applications. Here is how to add those widgets to your Home screens.

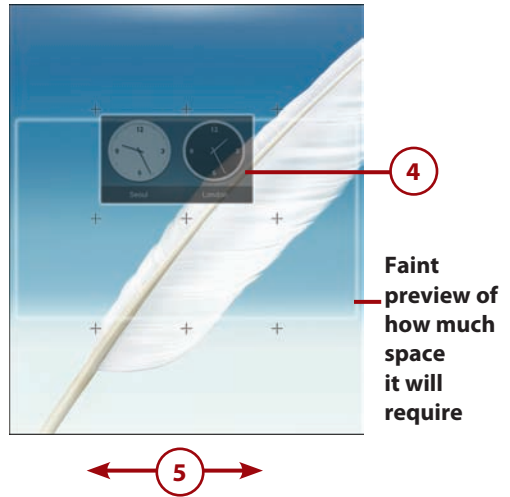
1. Touch the Launcher icon.
2. Touch Widgets.
3. Touch and hold a widget to move it to the Home screen. Keep holding the widget as you move to step 4. This example uses the Dual Clock (Analog).



4. Position the widget where you want it on the Home screen.
5. Drag the widget between sections of the Home screen.
6. Release your finger to place the widget. Some widgets ask you a few questions after they are positioned.

### How Many Widgets Can I Fit?

Each part of the Home screen is divided into four blocks across and four blocks down. In the figure for steps 2 and 3, notice that each one shows its size in blocks across and down (such as 1×1). From that, you can judge if a widget is going to fit on the screen you want it to be on, but it also helps you position it in step 3.



### Resizing Widgets

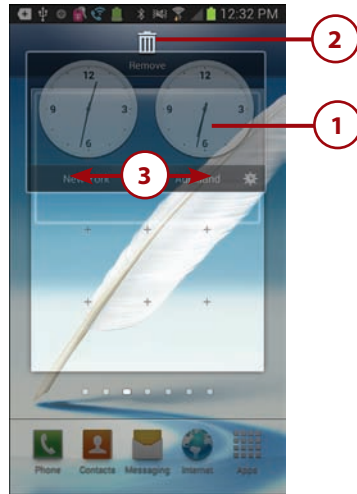
Some (not all) widgets can be resized. To resize a widget, touch and hold the widget until you see an outline and then release it. If the widget can be resized, you see the resizing borders. Drag them to resize the widget. Touch anywhere on the screen to stop resizing.



## Remove and Move a Widget

Sometimes you want to remove a widget, resize it, or move it around.

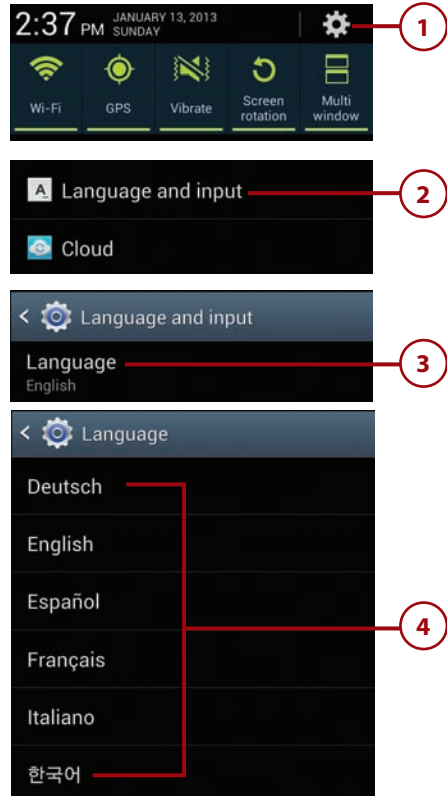
1. Touch and hold the widget until you see a blue shadow, but continue to hold the widget.
2. Drag the widget to the word Remove to remove it.
3. Drag the widget around the screen or drag it between sections of the Home screen to reposition it.
4. Release the widget.



## Setting the Language

If you move to another country or want to change the language used by your Galaxy Note II, you can do so with a few touches.

1. Pull down the Notification bar and touch the Settings icon.
2. Touch Language and Input.
3. Touch Language.
4. Touch the language you want to switch to.



## What Obeys the Language Setting?

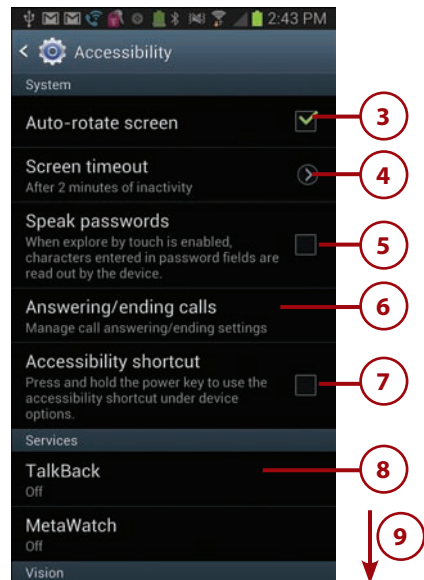
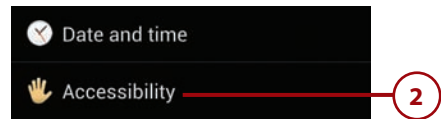
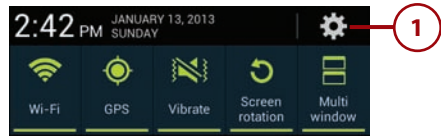
When you switch your Galaxy Note II to use a different language, you immediately notice that all standard applications and the Galaxy Note II menus switch to the new language. Even some third-party applications honor the language switch. However, many third-party applications ignore the language setting on the Galaxy Note II. So you might open a third-party application and find that all of its menus are still in English.



# Changing Accessibility Settings

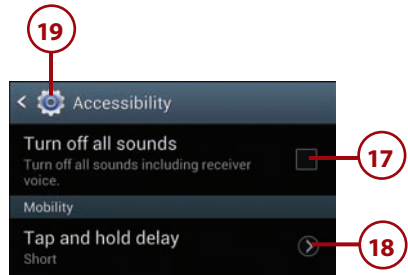
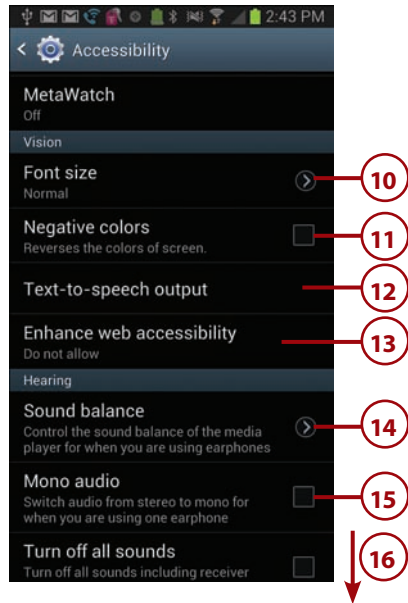
Your Galaxy Note II includes built-in settings to assist people who might otherwise have difficulty using some features of the device. The Galaxy Note II has the ability to provide alternative feedback, such as vibration and sound. It can even read menu items aloud to you.

1. Pull down the Notification bar and touch the Settings icon.
2. Touch Accessibility.
3. Touch to enable automatic screen rotation. When disabled, the screen does not rotate between Portrait and Landscape modes.
4. Touch to set how many minutes of inactivity your Galaxy Note II waits before timing out the screen.
5. Touch to enable or disable the feature where your tablet speaks your passwords as you type them.
6. Touch to choose whether to use the Home key to answer calls and/or the power key to end calls.
7. Touch to enable or disable the feature where you can press and hold the power key to jump straight to this Accessibility settings screen.
8. Touch to enable or disable TalkBack. When enabled, TalkBack speaks everything, including menus.
9. Scroll down for more settings.





10. Touch to set the font size used on your Galaxy Note II. You can choose sizes ranging from tiny to huge.
11. Touch to enable or disable negative colors where all colors displayed on your Galaxy Note II are reversed.
12. Touch to choose which text-to-speech service to use (Google or Samsung) and rate of the speech.
13. Touch to allow or disallow Google web scripts that make websites more accessible.
14. Touch to adjust the balance of audio played when wearing earphones.
15. Touch to use mono audio when wearing one earphone.
16. Scroll down for more settings.
17. Touch to turn off all sounds.
18. Touch to change how long you have to hold when you perform a touch-and-hold on the screen.
19. Touch to save your settings and return to the previous screen.



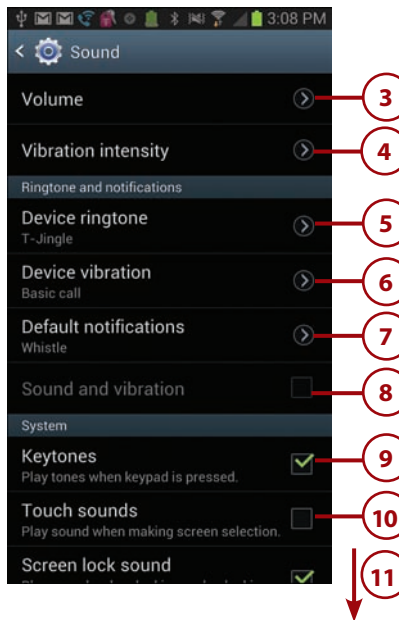
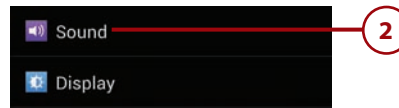
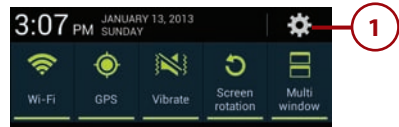
## More About Text-to-Speech

By default, your Galaxy Note II uses the Google Text-to-Speech service with an option to use the Samsung service to speak any text that you need to read. You can install other text-to-speech software by searching for them in the Google Play store. After you've installed the software, it shows as a choice in step 12.

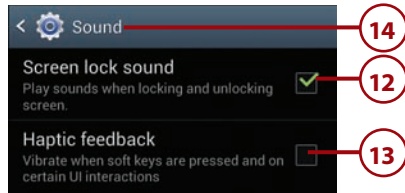
# Adjusting Sound Settings

You can change the volume for games, ringtones, and alarms, change the default ringtone and notification sound, plus control what system sounds are used.

1. Pull down the Notification bar and touch the Settings icon.
2. Touch Sound.
3. Touch to change the volume for games and media, such as videos and music, ringtones and notifications, and alarms.
4. Touch to choose the intensity of vibrations for incoming calls, notifications, and haptic feedback.
5. Touch to choose the default notification ringtone or add new ones.
6. Touch to choose the vibration pattern used for notifications or create your own.
7. Touch to choose the sound that plays for notifications.
8. Touch to enable or disable playing a sound and vibration when being notified. This option is only available when you have your Galaxy Note II in Sound mode.
9. Touch to enable or disable playing touch-tone sounds when typing numbers on the phone keypad.
10. Touch to enable or disable the touch sounds that play when you touch something on the screen or a menu.
11. Scroll down for more settings.

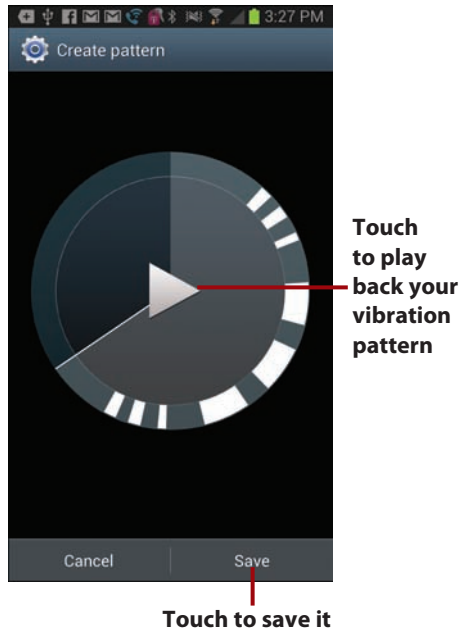


12. Touch to enable or disable the screen lock sound that plays when your Galaxy Note II locks the screen after the inactivity timeout.
13. Touch to enable or disable Haptic feedback, which is a vibration that indicates that you have successfully touched the Menu and Back keys.
14. Touch to save your changes and return to the previous screen.



### Creating Your Own Vibration Patterns

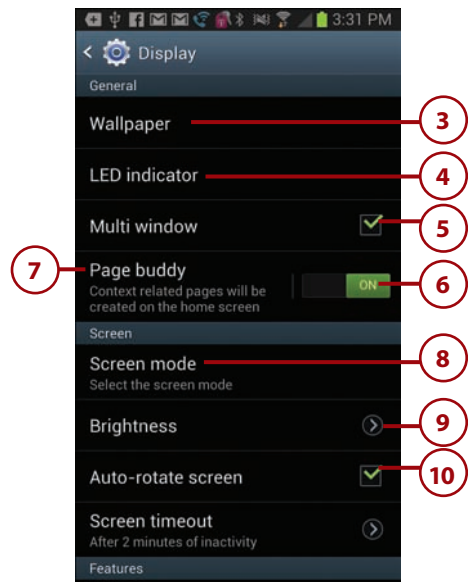
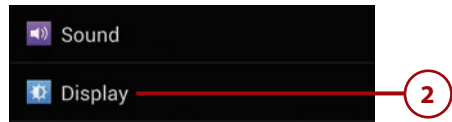
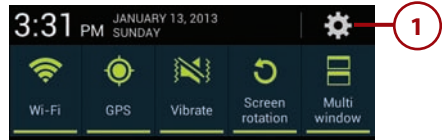
In step 6, you can choose the vibration pattern to be used when you are notified, but you can also create your own. Touch Create. On the next screen, touch in the area where it reads “Tap to create,” and then tap out your vibration pattern on the screen using short taps for short vibrations and long taps for longer vibrations. The example in the figure uses Morse Code for SOS. You can literally create any vibration pattern you want.



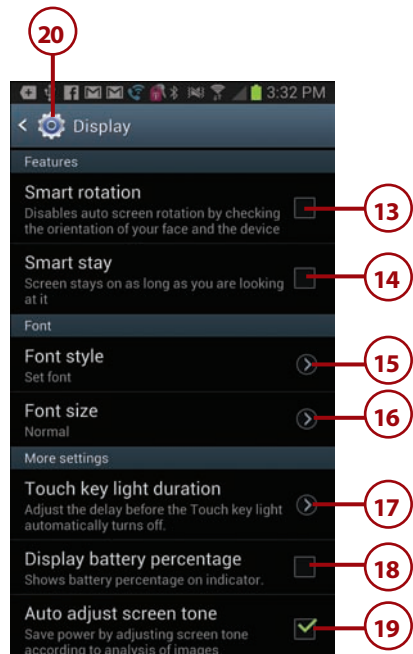
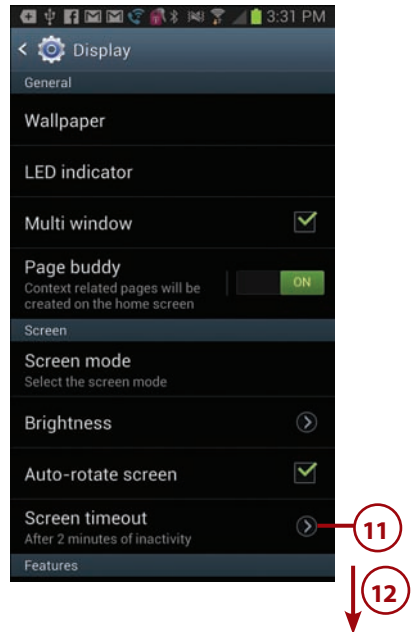
## Modifying Display Settings

You can change the screen brightness or set it to automatic, change the wallpaper, change how long to wait before your Galaxy Note II goes to sleep, change the size of the font used, and change whether to use the Pulse notification light.

1. Pull down the Notification bar and touch the Settings icon.
2. Touch Display.
3. Touch to change the wallpaper. Read earlier tasks in this chapter for more about how to change the wallpaper.
4. Touch to choose when the LED indicator is used.
5. Touch to enable or disable Multi Window, which is when two apps run on the screen at the same time. See the Prologue, "Getting to Know Your Galaxy Note II," for more information on Multi Window.
6. Touch to enable or disable Page Buddy. Page Buddy displays a helpful page when it detects that you've done certain things, such as plugging in your headset, plugging your phone into a dock, roaming, or removing the S Pen.
7. Touch to choose which Page Buddy pages are used.
8. Touch to choose the Screen mode, which is how the screen represents colors. You can choose Dynamic, Standard, Natural, or Movie.
9. Touch to change the screen brightness manually or set it to automatic. When on automatic, your Galaxy Note II uses the built-in light sensor to adjust the brightness based on the light levels in the room.
10. Touch to enable or disable Auto-Rotate, which is when your Galaxy Note II uses the accelerometer to detect its orientation and rotate the screen to match it.



11. Touch to choose how many minutes of inactivity must pass before your Galaxy Note II puts the screen to sleep.
12. Scroll down for more settings.
13. Touch to enable or disable a feature that uses the front-facing camera to determine the orientation of the screen based on the orientation of your face.
14. Touch to enable or disable a feature that uses the front-facing camera to keep the screen turned on while you are looking at your phone no matter what the screen timeout is set to.
15. Touch to choose the font style used for all text.
16. Touch to choose the font size used for all text.
17. Touch to set the key light duration, which is how long the light under the Menu and Back keys remains lit after you have touched them.
18. Touch to enable or disable displaying the battery level as a percentage as well as showing the level graphically.
19. Touch to enable or disable automatically adjusting the tone of the screen based on the kinds of images being shown.
20. Touch to save your changes and return to the previous screen.



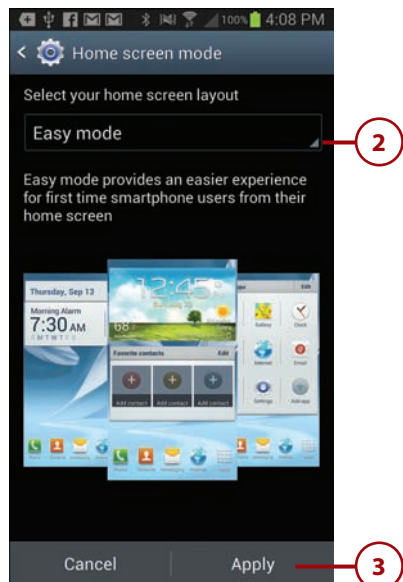
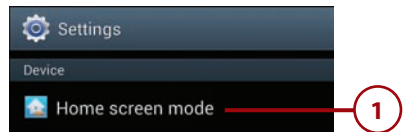
# Adjusting Samsung-Specific Settings

On top of the regular Android features, Samsung has added some that only work on their phones. Here is how to set those settings. For this section, assume that all screens start on the Settings screen.

## Home Screen Mode

Home Screen mode changes which widgets are placed on your Home screen and how many you have on the Home screen. Easy mode places a lot of widgets that have shortcuts to many apps.

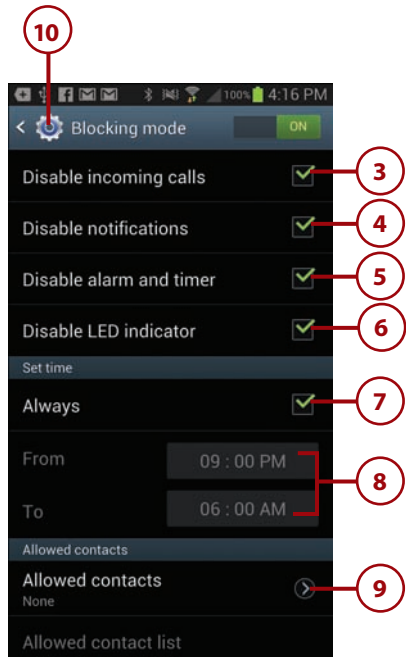
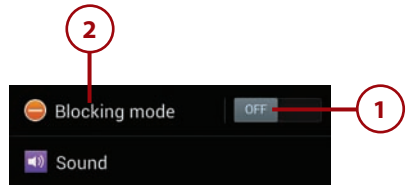
1. Touch Home Screen Mode under the Device section.
2. Touch to choose Basic Mode or Easy Mode.
3. Touch to save your changes and return to the previous screen.



## Blocking Mode

Blocking mode enables you to choose a time period when notifications are blocked. This would normally be while you are asleep, but it could be anytime you choose.

1. Touch to enable or disable Blocking Mode.
2. Touch to configure Blocking Mode.
3. Touch to enable or disable blocking all incoming calls while in Blocking mode.
4. Touch to enable or disable blocking all notifications while in Blocking mode.
5. Touch to enable or disable blocking all alarms and timers while in Blocking mode.
6. Touch to enable or disable blocking the LED indicator while in Blocking mode.
7. Touch to set the Blocking mode to Always. Uncheck to set it for a specific period.
8. Set the period of time when Blocking mode is automatically enabled and disabled.
9. Touch to configure which contact's calls will get through when Blocking mode is enabled.
10. Touch to save your changes and return to the previous screen.

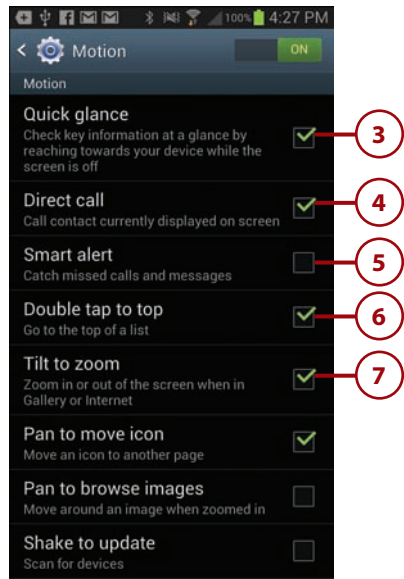
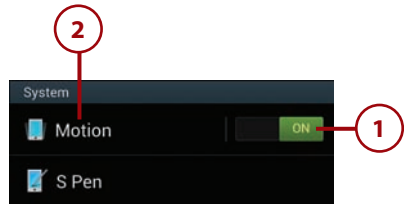




## Motion

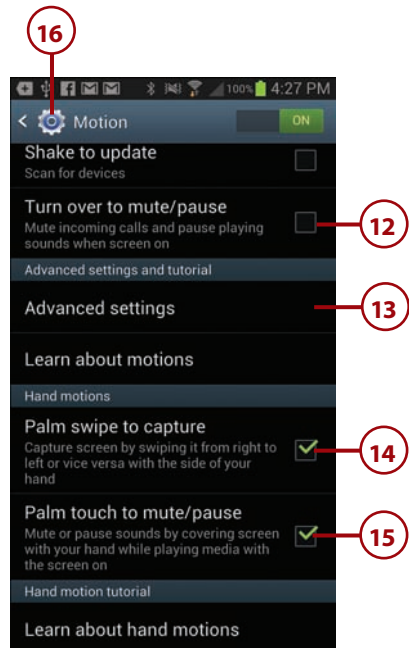
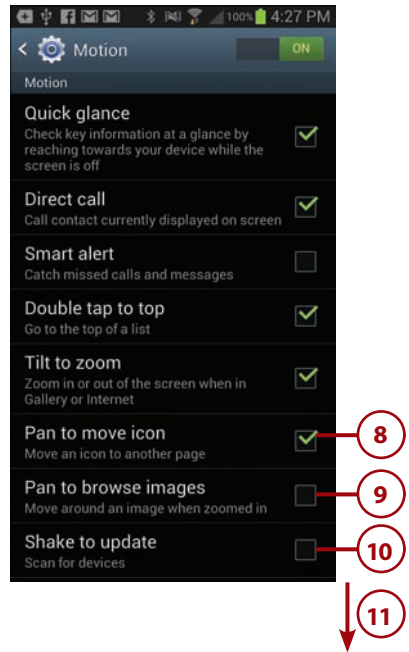
Motion has a number of features that enable you to use hand movements and phone movements to show information and perform certain functions.

1. Touch to enable or disable Motion.
2. Touch to configure Motion.
3. Touch to enable or disable Quick Glance, which displays key information such as number of missed calls, number of unread emails, and battery percentage if you reach toward your phone while the screen is off.
4. Touch to enable or disable Direct Call, which enables you to lift the phone to your ear to automatically place a call to a contact whose phone number is on the screen.
5. Touch to enable or disable Smart Alert, which vibrates the phone as you pick it up if you have missed any calls or messages.
6. Touch to enable or disable Double Tap to Top, which allows some apps to scroll to the top of a list if you double-tap the top of your Galaxy Note II.
7. Touch to enable or disable Tilt to Zoom, which enables you to tilt your phone to zoom in and out of images.





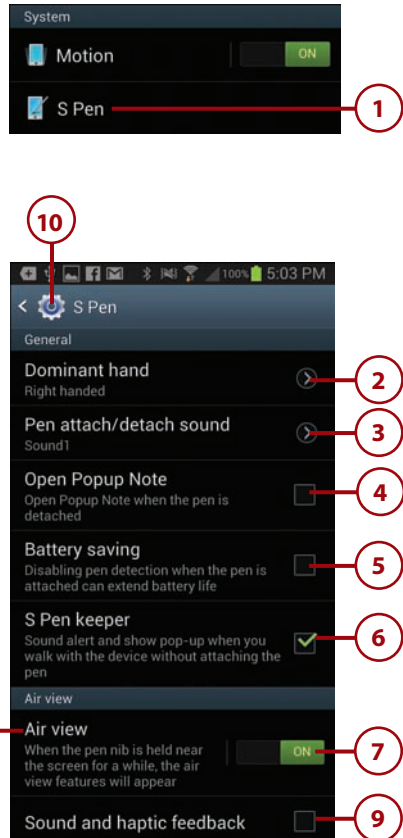
8. Touch to enable or disable Pan to Move Icon. To use this feature, touch and hold an icon to start moving it, and instead of moving it left and right, move the phone left and right to scroll between Home screens.
9. Touch to enable or disable a feature that allows you to move around a zoomed-in image by moving your phone rather than swiping around the image.
10. Touch to enable a feature that enables you to shake your phone to manually update content when in certain apps or settings screens. Examples include checking for new email, scanning for Bluetooth devices, or scanning for Wi-Fi networks.
11. Scroll down for more settings.
12. Touch to enable or disable a feature that mutes your phone when you turn it over.
13. Touch to choose what information is shown when Quick Glance is enabled in step 3.
14. Touch to enable or disable a feature that allows you to take a screenshot by swiping across the screen with the side of your hand.
15. Touch to enable or disable a feature that allows you to mute or pause sounds by covering the screen with your hand.
16. Touch to save your changes and return to the previous screen.



## S Pen

The S Pen Settings screen enables you to configure how your S Pen behaves and even makes it possible for your Galaxy Note II to alert you if you leave your S Pen on the desk and walk away.

1. Touch S Pen.
2. Touch to change the dominant hand from left handed to right handed.
3. Touch to change the sound that is played when you detach your S Pen.
4. Touch to enable or disable a feature that opens Popup Note, which is a mini version of S Note, when you detach your S Pen. This can be useful for writing quick notes.
5. Touch to enable or disable S Pen detection, which saves the battery. S Pen detection enables your Galaxy Note II to detect when you remove the S Pen from its holder.
6. Touch to enable or disable S Pen Keeper that alerts you if you leave your S Pen lying around and walk away without it.
7. Touch to enable or disable Air View. See the Prologue to learn more about Air View.
8. Touch to configure which Air View settings are enabled.
9. Touch to enable or disable sound and haptic feedback while using the S Pen.
10. Touch to save your changes and return to the previous screen.



# Index

## Symbols

24-hour time format,  
setting, 159

## A

ABC key, 27

accented characters,  
entering, 28

accepting

calls, 205-206

invitations

*corporate event invitations, 175-176*

*Google event invitations, 174-175*

*via Quick*

*Responses, 177*

accessibility settings

Chrome app, 104-105

overview, 81-82

accessing

Google Maps offers,  
151-152

Google Now, 141-142

Access Point Name

(APN), 63

accounts

adding to Contacts,  
181-186

Amazon accounts, creat-  
ing, 271

Facebook accounts,

sharing videos on, 247

Google accounts, 14

*adding, 110-111*

*multiple Google  
accounts, 111*

Google Wallet, configur-  
ing, 281-282

POP3 or IMAP accounts,

adding to Email app,  
124-127, 138-139

removing from

Contacts, 186

Samsung accounts, 14

work email account,

adding to Email app,  
121-124

YouTube accounts, shar-  
ing videos on, 247

Accounts settings, 182-186

ActiveSync setup, 182-183

Add Account command,

110, 121, 124

Add Call command, 212

adding. *See also* creating

accounts to Contacts,  
181-186

accounts to Email app

*corporate accounts,  
134-139*

*POP3 or IMAP*

*accounts, 124-127*

*POP/IMAP accounts,  
138-139*

*work email accounts,  
121-124*

Calendar events,  
171-174

contacts

*contact photos, 190*

*from email, 191*

*to Home screen,  
200-201*

*with NFC (Near Field  
Communications),  
194*

*manually, 192*

*from vCards, 193*

email attachments

*in Email app, 130*

*to Gmail email, 114*

Google accounts,  
110-111

music to Google Music,  
233-235

music to playlists, 242

tasks, 178

videos to YouTube, 260

VPNs (virtual private  
networks), 64-65

widgets to Home  
screens, 78-79

addresses

IP addresses, 52

MAC addresses, 52

Add to Playlist command,  
241-242

Air View, 8-10, 91

alarms

blocking, 88

creating, 160

- deleting, 161
- editing, 161
- Location Alarm, 161
- managing, 160-161
- Smart Alarm, 161
- Snooze feature, 161
- volume, 161
- Aldiko app, 274
- Amazon accounts, creating, 271
- Android
  - Android apps, 281
    - buying, 285
    - downloading, 284
    - managing, 286-287
    - permissions, 284
    - reinstalling, 289
    - uninstalling, 287
    - updating, 287-290
  - Android Beam
    - enabling, 57-58
    - overview, 58
    - sending files with, 59-60
    - sending links to content, 58-59
  - Android File Transfer, installing on Apple Mac OS X, 36
  - Android Market, 281
  - Android Market, 281
    - answering calls from Lock screen, 19
  - Anti-Shake setting (Camera app), 254
  - APN (Access Point Name), 63
  - App folders, creating, 23-24
  - Apple Mac OS X
    - Android File Transfer, installing, 36
    - Google Music Manager
      - configuring, 39-41
      - installing, 37
  - Application Manager, 299-300
  - app menus, 32
  - apps. *See also* widgets
    - Aldiko, 274
    - Android apps, 281
      - buying, 285
      - downloading, 284
      - managing, 286-287
      - permissions, 284
      - reinstalling, 289
      - uninstalling, 287
      - updating, 287-290
    - Calendar
      - adding events, 171-174
      - adding tasks, 178
      - choosing calendars and tasks lists to view, 169
      - deleting events, 174
      - drawing on, 168
      - editing events, 174
      - event colors, 168
      - navigating main screen, 167-168
      - Quick Responses, 177
      - responding to corporate event invitations, 175-176
      - responding to Google event invitations, 174-175
      - settings, 169-171
    - Camera
      - flash, 249
      - light metering, 250
      - recording videos, 253
      - settings, 249-251
      - Share Shot feature, 250
      - taking photos, 248-249
      - video settings, 253-254
      - viewing photos, 251-252
    - Chrome, 93
      - bookmarks, 97-100
      - browser settings, 102-107
      - browser tricks, 96-97
      - browsing in secret, 101
      - Developer Tools, 107
      - landscape orientation, 96
      - multiple tabs, 101
      - navigation, 93-94
      - web page options, 95
      - zooming in/out, 97
    - Clock
      - alarms, 160-161
      - desk clock, 163
      - Dock mode, 164-167
      - navigating, 159
      - Stopwatch, 159
      - World Clock, 162

## Contacts

- adding contact photos, 190*
- adding contacts, 191-200*
- adding contacts to Home screen, 200-201*
- checking contact's status, 188*
- choosing which contacts to display, 198*
- contact groups, 196-197*
- dialing calls from, 209*
- editing contacts, 188-189*
- importing/exporting contacts, 201*
- joining contacts, 199*
- managing contacts, 191-200*
- navigating, 186-187*
- overview, 181*
- separating contacts, 200*
- settings, 195*

## Email

- adding message attachments, 130*
- adding POP3 or IMAP accounts, 124-127*
- adding work email accounts, 121-124*
- composing email, 128-129*
- corporate account settings, 134-139*
- navigating, 127-128*
- POP/IMAP account settings, 138-139*
- reading email, 130-131*
- settings, 132-139*

## Flipboard, 279

## Gallery, 244

- pictures, setting as wallpaper, 75*
- videos, 245-247*

## Gmail, 109

- adding message attachments, 114*

- composing email, 113*
- Google accounts, adding, 110-111*
- labels, 120*
- marking messages as important/not important, 116*
- muting email conversations, 116*
- navigating, 112*
- reading email, 115-116*
- reporting phishing, 116*
- reporting spam, 116*
- settings, 117-119*

## Google Maps

- accessing special offers, 151-152*
- getting directions, 146-147*
- Google Latitude, 153*
- offline Google Maps, 150-151*
- overview, 146*
- settings, 148-149*
- setting up, 145*

## Google Now

- accessing, 141-142*
- Google Now screen, 142*
- setting up, 143-144*

## Kindle

- installing, 270*
- reading books, 272-275*
- registering, 271-275*
- view options, 274*

## Kobo, 274

- memory management, 299-300*

## Messaging

- attaching files to messages, 224-225*
- composing messages, 223-224*
- message limits, 224*
- navigating, 216*
- receiving messages, 226-227*
- settings, 216-222*

## Music Hub, 244

## Music Player, 244

## Navigation, 153-154

## Nook, 274

## Phone, 203

- accepting calls, 205-206*
- Auto Reject mode, 213*
- Call settings, 213-215*
- conference calls, 212*
- controlling calls, 210-212*
- handling missed calls, 207-208*
- navigating, 204-205*
- opening, 204-205*
- placing calls, 208-212*
- receiving calls, 205*
- rejecting calls, 206*

## Play Books

- buying books, 265-267*
- opening, 264*
- options, 268-270*
- reading books, 267*

## Play Magazines

- choosing magazines, 275-276*
- opening, 275-276*
- options, 278*
- reading magazines, 277-278*

## Play Music, 229

- adding music to Google Music, 233-235*
- controlling playback, 238-240*
- finding music, 231*
- installing, 230*
- managing music, 236-237*
- offline listening, 243-244*
- playlists, 241-243*
- purchasing music, 231-233*
- synchronizing music, 244*
- working while listening, 240*

## PressReader, 275

## running multiple, 33-34

- shortcuts, 21
    - creating*, 22
    - removing*, 24
  - stopping, 299-300
  - switching, 35
  - YouTube, 254
    - main screen*, 255
    - playing videos*, 256-257
    - settings*, 258-259
    - uploading videos*, 260
  - Zinio, 275
  - app shortcuts, 21
    - creating*, 22
    - removing*, 24
  - Apps icon, 230
  - artists, sorting albums by, 237
  - Attach icon, 130
  - attaching files to messages, 224-225
  - attachments, adding to email
    - in Email app, 130
    - in Gmail email, 114
  - Attach Picture command (Gmail), 114
  - Attach Video command (Gmail), 114
  - audio, attaching to messages, 224-225
  - Autofill data (Chrome), clearing, 104
  - Autofill Forms feature (Chrome), 102
  - Auto-fit option (Gmail), 118
  - automatically updating apps, 287
  - automatic focus (camera), 253
  - automatic retrieval of multimedia messages, 219
  - automatic screen rotation, enabling/disabling, 81
  - Auto Reject mode, 213
  - Auto-Rotate, 85
- B**
- Back button, 5
  - back cover removal point, 6
  - back external features, 5-6
  - background data limits, setting, 302
  - Bandwidth Management settings (Chrome app), 106-107
  - Basic Mode, 87
  - battery
    - care of, 296
    - monitoring battery use, 297-298
    - Power Saving options, 298-299
    - spare batteries, 296
  - Bcc (Blind Carbon Copy), 113
  - blocking
    - alarms, 88
    - calls, 88
    - LED indicator, 88
    - notifications, 88
    - pop-up windows, 106
    - timers, 88
  - Blocking mode, 88
  - blogs (Android), 303
  - Bluetooth devices, 43
    - device options, 47-48
    - pairing, 44-46
    - passkeys, 45
    - profiles, 48
    - settings, 47
  - bookmarks, 97
    - adding to Home screen, 98
    - creating, 99
    - deleting, 98
    - editing, 98
    - managing, 98
    - Most Visited sites list, 99-100
    - Other Devices list (Chrome), 100
    - viewing, 98
  - Bookmarks folder, 98
  - Bookmarks screen, 99
  - book readers
    - Aldiko app, 274
    - Kindle app
      - installing*, 270
      - reading books*, 272-275
      - registering*, 271-275
      - view options*, 274
  - Kobo app, 274
  - Nook app, 274
  - Play Books app
    - buying books*, 265-267
    - opening*, 264
    - options*, 268-270
    - reading books*, 267
  - books, 263
    - buying from Play Books app, 265-267
    - free books, finding online, 267
    - reading
      - with Kindle app*, 272-275
      - with Play Books app*, 267
    - reviewing, 266
    - sharing, 266
    - viewing in Play Books app, 264
  - bottom external features, 7
  - Briefing alarm type, 160
  - brightness, adjusting, 85
  - Bring Your Own Device (BYOD) policy, 124
  - browsing web with Chrome, 93
    - bookmarks, 97
      - adding to Home screen*, 98
      - creating*, 99
      - deleting*, 98
      - editing*, 98
      - managing*, 98
      - Most Visited sites list*, 99-100
      - Other Devices list*, 100
      - viewing*, 98
    - browser settings, 102-107
      - Accessibility*, 104-105
      - Bandwidth Management*, 106-107
      - content settings*, 105-106
      - general settings*, 102
      - history, clearing*, 104

- Network Action Predictions*, 103
  - Privacy*, 102-104
  - browser tricks, 96-97
  - browsing in secret, 101
  - Developer Tools, 107
  - landscape
    - orientation, 96
    - multiple tabs, 101
    - navigation, 93-94
    - web page options, 95
    - zooming in/out, 97
  - bursts of photos, taking, 249
  - buttons
    - Back, 5
    - Home, 5
    - Menu, 5
    - Power, 6
    - S Pen, 7
    - volume, 5
  - buying
    - Android apps, 285
    - books from Play Books app, 265-267
    - magazines from Play Magazines app, 275-276
    - music from Play Music app, 231-233
  - BYOD (Bring Your Own Device) policy, 124
- C**
- cache (browser), clearing, 104
  - Calendar
    - adding events, 171-174
    - adding tasks, 178
    - choosing calendars and tasks lists to view, 169
    - drawing on, 168
    - event colors, 168
    - navigating main screen, 167-168
    - Quick Responses, 177
    - responding to corporate event invitations
      - from calendar, 176
      - from email, 175
    - responding to Google event invitations
      - from calendar, 175
      - from email, 174
    - settings, 169-171
  - Calendar icon, 167
  - calls
    - accepting, 205-206
    - answering from Lock screen, 19
    - blocking, 88
    - call settings, 213-215
    - controlling, 210-212
    - declining, 206
    - missed calls, handling, 207-208
    - muting, 205, 211
    - placing
      - conference calls, 212
      - dialing from contact entry, 209
      - dialing from keypad, 208-209
      - dialing with voice, 210
    - putting on hold, 210
    - receiving, 205
    - rejecting, 206
    - sending to voicemail, 206
    - using other apps
      - during, 212
  - Camera app
    - flash, 249
    - light metering, 250
    - recording videos, 253
    - settings, 249-251
    - Share Shot feature, 250
    - taking photos, 248-249
    - video settings, 253-254
    - viewing photos, 251-252
  - camera
    - Camera app
      - flash, 249
      - light metering, 250
      - recording videos, 253
      - settings, 249-251
      - Share Shot feature, 250
      - taking photos, 248-249
      - video settings, 253-254
      - viewing photos, 251-252
    - front camera, 4
    - LED (light-emitting diode) camera flash, 6
    - rear camera, 6
  - CAPS Lock, 26
  - capturing screen with S Pen, 12
  - Carbon Copy (Cc), 113
  - Carousel view (Play Books app), 264
  - CB (Citizens' Band) messages, 221
  - Cc (Carbon Copy), 113
  - cellular network mobile settings, 62-64
  - changing
    - accessibility settings, 81-82
    - contacts in contact groups, 197
    - contacts to display, 198
    - display settings, 84-86
    - font size
      - in Kindle app, 274
      - in Play Books app, 270
    - keyboard, 77-78
    - language, 80-84
    - ringtones, 83
    - search engines, 102
    - screen brightness, 85
    - sound settings, 83-84
    - wallpaper, 74
      - finding wallpaper, 76
      - live wallpaper, 76
      - static wallpaper, 76
      - wallpaper from Gallery pictures, 75
  - checking
    - contact's status, 188
    - for Android updates, 294
  - check-in notifications, enabling on Google Maps, 149
  - choosing. *See* changing
  - Chrome app, 93
    - bookmarks, 97
      - adding to Home screen, 98
    - creating, 99
    - deleting, 98
    - editing, 98
    - managing, 98



- Most Visited sites list*, 99-100
  - Other Devices list*, 100
  - viewing*, 98
- browser tricks, 96-97
- browsing in secret, 101
- Developer Tools, 107
- landscape orientation, 96
- multiple tabs, 101
- navigation, 93-94
- settings
  - Accessibility*, 104-105
  - Bandwidth Management*, 106-107
  - browser settings*, 102-107
  - content settings*, 105-106
  - general settings*, 102
  - Network Action*
  - Predictions*, 103
  - Privacy*, 102-104
  - web page options, 95
  - zooming in/out, 97
- Chrome icon, 94
- cities, managing in World Clock, 162
- Citizens' Band (CB) messages, 221
- cleaning Galaxy Note II exterior, 302-303
- Clear Browsing Data dialog (Chrome), 103-104
- clearing
  - Autofill data (Chrome), 104
  - browser cache, 104
  - browser history, 104
  - cookies, 104
  - notifications, 21
- Clock
  - alarms
    - creating*, 160
    - deleting*, 161
    - editing*, 161
    - Location Alarm*, 161
    - managing*, 160-161
    - Smart Alarm*, 161
    - Snooze feature*, 161
    - volume*, 161
  - desk clock, 163
  - Dock mode
    - dock settings*, 166-167
    - enabling*, 164
    - shortcuts, changing*, 165-167
    - navigating, 159
    - Stopwatch, 159
    - World Clock, 162
  - color of Calendar events, 168
  - completed tasks, marking, 178
  - composing
    - email
      - in Email app*, 128-129
      - in Gmail*, 113
    - messages, 223-224
  - conference calls, 212
  - configuring
    - Google Music Manager, 39-41
    - Google Wallet, 281-282
  - connections
    - Bluetooth devices, 43
      - device options*, 47-48
      - pairing*, 44-46
      - passkeys*, 45
      - profiles*, 48
      - settings*, 47
    - cellular network mobile settings, 62-64
    - mobile Wi-Fi hotspots
      - limiting who can connect*, 71
      - starting*, 69-71
  - NFC (Near Field Communications)
    - Android Beam*, 57-60
    - enabling*, 57-58
    - overview*, 57
    - S Beam*, 57-58, 61
  - VPNs (virtual private networks)
    - adding*, 64-65
    - connecting to*, 66-68
    - creating shortcuts to*, 68
    - deleting*, 67
    - editing*, 67
  - Wi-Fi Direct
    - connecting with*, 54-55
  - overview*, 53
  - setting up*, 53
  - WiFi Shoot*, 56
- Wi-Fi networks
  - advanced Wi-Fi options*, 51-52
  - connecting to*, 49-50
  - mobile Wi-Fi hotspots*, 69-71
  - network options*, 50
- contact groups
  - changing contacts in, 197
  - creating, 196-197
- Contact Photo dialog, 190
- contacts
  - adding
    - from email*, 191
    - to Home screen*, 200-201
    - manually*, 192
    - with NFC (Near Field Communications)*, 194
    - from vCards*, 193
  - adding to Home screen, 200-201
  - adding to messages, 224-225
  - checking status of, 188
  - choosing which contacts to display, 198
  - contact groups
    - changing contacts in*, 197
    - creating*, 196-197
  - dialing calls from, 209
  - editing, 188-189
  - exporting, 201
  - importing, 201
  - joining, 199
  - managing, 195
  - navigating, 186-187
  - photos, adding, 190
  - separating, 200
- Contacts app
  - adding contact photos, 190
  - adding contacts
    - from email*, 191
    - to Home screen*, 200-201



- manually*, 192
- with NFC (Near Field Communications)*, 194
- from vCards*, 193
- checking contact's status, 188
- choosing contacts to display, 198
- contact groups
  - changing contacts in*, 197
  - creating*, 196
- dialing calls from, 209
- editing contacts, 188-189
- importing/exporting contacts, 201
- joining contacts, 199
- navigating, 186-187
- overview, 181
- separating contacts, 200
- settings, 195
- Contacts to Display
  - command, 198
- Contact widget, 201
- Content Settings (Chrome app), 105-106
- context menus, 32
- Continuous Input, 29
- controlling
  - calls, 210-212
  - music playback, 238-240
- cookies, clearing, 104
- corporate email accounts
  - adding, 121-124
  - Email app settings, 134-139
- corporate event invitations, responding to
  - from calendar, 176
  - from email, 175
- CPU Power Saving
  - option, 298
- crash reports (Chrome), 103
- Create Contact
  - command, 191
- creating. *See also* adding
  - alarms, 160
  - Amazon accounts, 271
  - App folders, 23-24

- app shortcuts, 22
- bookmarks, 99
- contact groups, 196-197
- Home screens, 24
- playlists, 241
- Creation mode feature, 220
- currency conversion in
  - Google Play, 285
- cursor, 31
- customizing
  - accessibility settings, 81-82
  - display settings, 84-86
  - keyboard, 77-78
  - language, 80-84
  - sound settings, 83-84
  - wallpaper, 74
    - finding wallpaper*, 76
    - live wallpaper*, 76
    - static wallpaper*, 76
    - wallpaper from Gallery pictures*, 75

## D

- data usage
  - and music
    - downloads, 233
    - managing, 300-302
- Date and Time settings, 157-159
  - date, 157-159
  - network time sync, 158
- Day theme (Play Books app), 269
- declining
  - calls, 206
  - invitations
    - corporate event invitations*, 175-176
    - Google event invitations*, 174-175
    - via Quick Responses*, 177
- delaying Android updates, 295
- deleting
  - accounts, 186
  - alarms, 161
  - app shortcuts, 24
  - bookmarks, 98
  - Calendar events, 174
  - playlists, 242
  - VPNs (virtual private networks), 67
- delivery reports, 218-219
- desk clock, 163. *See also* Clock
- Detect Your Location setting (Google Maps), 148
- Developer Tools (Chrome), 107
- Device settings
  - Blocking mode, 88
  - Home Screen mode, 87
  - Motion
    - Direct Call*, 89
    - Double Tap to Top*, 89
    - Pan to Move Icon*, 90
    - Quick Glance*, 89
    - Smart Alert*, 89
    - Tilt to Zoom*, 89
  - Motion setting, 89-90
  - S Pen, 91
- dialing calls
  - from contact entry, 209
  - from keypad, 208-209
  - with voice, 210
- Dialing screen, 210-211
- dictation, 29
- Direct Call, 89
- directions, getting
  - with Google Maps, 146-147
  - with Navigation app, 153-154
- Directions icon (Google Maps), 146
- disabling
  - Air View, 91
  - automatic screen rotation, 81
  - Auto-Rotate, 85
  - Blocking mode, 88
  - Direct Call, 89
  - Haptic feedback, 84
  - mobile data, 63
  - Pan to Move Icon, 90
  - Quick Glance, 89
  - Smart Alert, 89
  - TalkBack, 81
  - Tilt to Zoom, 89

Display Options panel (Play Books app), 269-270  
 Display settings, 84-86  
 DIVIDE, 124  
 Dock mode (Clock)  
   dock settings, 166-167  
   enabling, 164  
   shortcuts, changing, 165-167  
 double-tapping, 25  
 Double Tap to Top setting, 89  
 downloading  
   free Android apps, 284  
   free music, 231  
 dragging, 25  
 drawing  
   on Calendar, 168  
   in email, 129  
 Dropbox, 17  
 Dual Persona, 124

## E

earpiece, 4  
 Easy mode, 17, 87  
 editing  
   alarms, 161  
   bookmarks, 98  
   Calendar events, 174  
   contacts, 188-189  
   text, 30-31  
   VPNs (virtual private networks), 67  
 email. *See also* messages  
   adding contacts from, 191  
 Email app  
   *adding message attachments, 130*  
   *adding POP3 or IMAP accounts, 124-127*  
   *adding work email accounts, 121-124*  
   *corporate account settings, 134-139*  
   *POP/IMAP account settings, 138-139*  
   *reading email, 128-131*  
   *settings, 132-139*  
 Gmail, 109  
   *adding message attachments, 114*  
   *composing email, 113*  
   *Google accounts, adding, 110-111*  
   *labels, 120*  
   *marking messages as important/not important, 116*  
   *muting email conversations, 116*  
   *navigating, 112*  
   *reading email, 115-116*  
   *reporting messages as spam, 116*  
   *reporting phishing activity, 116*  
   *settings, 117-119*  
   responding to invitations from  
     *corporate event invitations, 175*  
     *Google event invitations, 174*  
 Email app  
   adding message attachments, 130  
   adding POP3 or IMAP accounts, 124-127  
   adding work email accounts, 121-124  
   composing email, 128-129  
   corporate account settings, 134-139  
   navigating, 127-128  
   POP/IMAP account settings, 138-139  
   reading email, 130-131  
   settings, 132-139  
 enabling. *See also* settings  
 Air View, 91  
 Android Beam, 57-58  
 Auto-Rotate, 85  
 automatic screen rotation, 81  
 Blocking mode, 88  
 check-in notifications on Google Maps, 149  
 Direct Call, 89  
 Dock mode (Clock), 164  
 Haptic feedback, 84  
 JavaScript, 105  
 NFC (Near Field Communications), 57-58  
 Pan to Move Icon, 90  
 Quick Glance, 89  
 S Beam, 57-58  
 Smart Alert, 89  
 TalkBack, 81  
 Tilt to Zoom, 89  
 End Call command, 212  
 entering text. *See* text entry  
 Enterpoid DIVIDE, 124  
 events (Calendar)  
   adding, 171-174  
   colors, 168  
   corporate event invitations  
     *responding from calendar, 176*  
     *responding from email, 175*  
   deleting, 174  
   editing, 174  
   Google event invitations  
     *responding from calendar, 175*  
     *responding from email, 174*  
 exporting contacts, 201  
 Exposure setting (Camera app), 254  
 external features. *See also*  
 S Pen  
   back, 5-6  
   cleaning and protecting, 302-303  
   front, 4-5  
   overview, 3-7  
   top/bottom, 7  
 Extra Volume button, 214

## F

Facebook accounts  
 adding, 181-186  
 removing, 186  
 sharing videos on, 247

- Favorites Tray, 24
  - Featured list (Play Books app), 265
  - FIFO (first in, first out), 217
  - files
    - attaching to messages, 224-225
    - sending
      - with *Android Beam*, 59-60
      - with *S Beam*, 61
  - finding
    - friends with Google Latitude, 153
    - music, 231
    - wallpaper, 76
  - first in, first out (FIFO), 217
  - first-time setup, 13-17
  - flash settings (camera), 249
  - Flipboard app, 279
  - focus (camera), 253
  - folders
    - App folders, creating, 23-24
    - Bookmarks folder, 98
    - Mobile Bookmarks folder, 98
  - font size
    - changing in Kindle app, 274
    - changing in Play Books app, 270
    - setting, 86
  - free apps, downloading, 284
  - free books, finding
    - online, 267
  - free music, downloading, 231
  - Free Sample option (Play Books app), 266
  - friends
    - locating with Google Latitude, 153
    - sharing location with, 148
  - front camera, 4
  - front external features, 4-5
- G
- Galaxy Note II website, 303
  - Gallery, 244
    - pictures, setting as wallpaper, 75
    - videos
      - playing, 245-246
      - sharing, 246-247
  - genres (Play Music app), 237
  - gestures
    - with S Pen, 10-11
    - with touchscreen, 24-25
  - Gmail, 109
    - adding message attachments, 114
    - composing email, 113
  - Google accounts, adding, 110-111
  - labels, 120
  - marking messages as important/not important, 116
  - muting email conversations, 116
  - navigating, 112
  - reading email, 115-116
  - reporting messages as spam, 116
  - reporting phishing activity, 116
  - settings, 117-119
  - GOOD (Good Technology), 124
  - Google accounts, 14
    - adding, 110-111
    - multiple Google accounts, 111
  - Google event invitations
    - responding from calendar, 175
    - responding from email, 174
  - Google Latitude, 153
  - Google Maps. *See also* Google Now
    - accessing special offers, 151-152
    - getting directions, 146-147
    - Google Latitude, 153
    - offline Google Maps, 150-151
    - overview, 146
    - settings, 148-149
      - location settings*, 145
      - offers settings*, 151-152
    - setting up, 145
  - Google Music, adding music to, 233-235
  - Google Music Manager
    - adding music to Google Music, 233-235
    - configuring, 39-41
    - installing on Apple Mac, 37
    - installing on Windows, 38
  - Google Now. *See also* Google Maps
    - accessing, 141-142
    - Google Now screen, 142
    - setting up, 143-144
  - Google Play
    - Android apps
      - buying, 285
      - downloading free apps, 284
      - managing, 286-287
      - permissions, 284
      - reinstalling, 289
      - uninstalling, 287
      - updating automatically, 287
    - currency conversion, 285
    - Google Wallet, configuring, 281-282
    - navigating, 283
    - settings, 288-289
  - Google Play Books
    - buying books, 265-267
    - opening, 264
    - options, 268-270
    - reading books, 267
  - Google Wallet, configuring, 281-282
  - GPS navigation
    - Google Maps
      - accessing special offers, 151-152

*getting directions,*  
 146-147  
*Google Latitude,* 153  
*offline Google Maps,*  
 150-151  
*overview,* 146  
*settings,* 145, 148-152  
*setting up,* 145  
 Google Now  
   *accessing,* 141-142  
   *Google Now*  
   *screen,* 142  
   *setting up,* 143-144  
 Navigation app, 153-154  
 groups (contact)  
   changing contacts in, 197  
   creating, 196-197  
 Guidelines setting (Camera  
 app), 254

## H

handling missed calls,  
 207-208  
 handwriting, entering with  
   S Pen, 31  
 Handwriting mode  
   (S Pen), 31  
 Haptic feedback  
   enabling/disabling, 84  
   with S Pen, 91  
 help, 269, 303  
 hold, putting calls on, 210  
 Hold command, 210  
 Home button, 5  
 Home Screen mode, 87  
 Home screens, 20  
   adding bookmarks to, 98  
   adding contacts to,  
   200-201  
   App folders, creating,  
   23-24  
   app shortcuts  
   *creating,* 22  
   *removing,* 24  
   creating, 24  
   Favorites Tray, 24  
   Launcher icon, 24  
   notifications, 21  
   widgets  
   *adding,* 78-79  
   *moving,* 80  
   *removing,* 80  
   *resizing,* 79  
 hotspots (Wi-Fi)  
   limiting who can  
   connect, 71  
   starting, 69-71  
 Hotword detection (Google  
 Now), 144

## I

icons  
   Apps, 230  
   Attach, 130  
   Calendar, 167  
   Chrome, 94  
   Directions, 146  
   Google Music Manager,  
   233  
   Launcher, 22, 24  
   Notification, 20  
   Play Music, 231  
   Play Store, 230, 283  
   Set Wallpaper, 76  
   smiley icons, 223  
 images  
   attaching to messages,  
   224-225  
   icons  
     *Apps,* 230  
     *Attach,* 130  
     *Calendar,* 167  
     *Chrome,* 94  
     *Directions,* 146  
     *Google Music Man-*  
     *ager,* 233  
     *Launcher,* 22, 24  
     *Notification,* 20  
     *Play Music,* 231  
     *Play Store,* 230, 283  
     *Set Wallpaper,* 76  
     *smiley icons,* 223  
   wallpaper, changing, 74  
     *finding wallpaper,* 66  
     *live wallpaper,* 76  
     *static wallpaper,* 76  
     *wallpaper from Gal-*  
     *lery pictures,* 75  
 IMAP accounts, adding to  
   Email app, 124-127

Import/Export  
   command, 201  
 importing contacts, 201  
 indicator light, 4  
 Insert Smiley dialog, 223  
 installing  
   Android File Transfer on  
   Apple Mac OS X, 36  
   Android updates,  
   294-295  
   Google Music Manager  
   *on Apple Mac,* 37  
   *on Windows,* 38  
   Kindle app, 270  
   Play Music app, 230  
 instant mix (music), 239  
 invitations, responding to  
   corporate event invita-  
   tions, 175-176  
   Google event invitations,  
   174-175  
   via Quick Responses, 177  
 IP addresses, 52

## J-K

JavaScript, enabling, 105  
 Join Contact command, 199  
 joining contacts, 199  
  
 Keep on Device  
   command, 243  
 keyboard  
   changing, 77-78  
   Continuous Input, 29  
   landscape mode, 28  
   overview, 25-27  
   Symbols window, 27-28  
 keypad, dialing calls from,  
 208-209  
 Kindle app  
   installing, 270  
   reading books, 272-275  
   registering, 271-275  
   view options, 274  
 Kobo app, 274

## L

labels (Gmail), 120  
 landscape keyboard, 28

Landscape mode (Email app), 128

landscape orientation

- Chrome app, 96
- for videos, 245

language, changing, 80-84

Language and Input settings, 80-84

Latitude (Google), 153

Launcher icon, 24

Learn About Power Saving option, 299

LED camera flash, 6

LED indicator, blocking, 88

library (Play Books app), opening, 264

light metering, 250

light sensor, 4

limiting connections to mobile Wi-Fi hotspots, 71

LinkedIn accounts

- adding, 181-186
- removing, 186

links to content, sending with Android Beam, 58-59

listening to music

- controlling playback, 238-240
- offline listening, 243-244
- playlists, 241-243
- working while listening, 240

live wallpaper, 76

locating friends with Google Latitude, 153

location

- adding to messages, 224-225
- sharing with friends, 148

Location Alarm, 161

Location Settings (Google Maps), 145

locking Google Play user settings, 289

Lock screen, 18-19

- opening Phone from, 204

Logs (Phone app), 204

## M

MAC addresses, 52

Mac OS X

- Android File Transfer, installing, 36
- Google Music Manager
  - configuring*, 39-41
  - installing*, 37

magazines

- choosing, 275-276
- reading, 277-278
- reviewing, 276
- sharing, 276
- subscribing to, 276

mail. *See* email

maintenance, 293

- Android updates, 294-295
  - checking for*, 294
  - delaying*, 295
  - installing*, 294-295
- apps and memory, 299-300
- battery
  - care of*, 296
  - monitoring battery use*, 297-298
  - Power Saving options*, 298-299
  - spare batteries*, 296
- data usage management, 300-302
- Galaxy Note II's exterior, 302-303

Make Available Offline option (Google Maps), 150

Manage Labels command (Gmail), 120

Manage SIM Card Messages command, 218

managing

- alarms, 160-161
- Android apps, 286-287
- bookmarks, 98
- Chrome
  - bookmarks*, 98
  - Most Visited sites list*, 99
- cities in World Clock, 162
- contacts, 195
- multiple tabs in Chrome, 101
- music, 236-237
- Manual email delivery, 184
- manual focus (camera), 253
- Maps. *See* Google Maps
- marking tasks as completed, 178
- memory management, 299-300
- Menu button, 5
- menus
  - app menus, 32
  - context menus, 32
- Message Options dialog, 227
- messages. *See also* email
  - attaching files to, 224-225
  - composing, 223-224
  - message limits, 224
  - receiving, 226-227
- Messaging app
  - attaching files to messages, 224-225
  - composing messages, 223-224
  - message limits, 224
  - navigating, 216
  - receiving messages, 226-227
  - settings, 216-222
- MHL-compliant Micro-USB port, 7
- microphone, 7
- Microsoft Exchange Active-Sync setup, 182-183
- Missed Calls icon, 18
- Missed Text Messages icon, 18
- MMS (Multimedia Message Service). *See also* Messaging app
- Mobile Bookmarks folder, 98
- mobile data, disabling, 63
- Mobile Networks settings, 62-64
- mobile Wi-Fi hotspots
  - limiting who can connect, 71
  - starting, 69-71

modes  
 Blocking mode, 88  
 Easy mode, 17  
 Home Screen mode, 87

monitoring battery use, 297-298

Most Visited sites list (Chrome), 94, 99-100

Motion settings, 89-90  
 Direct Call, 89  
 Double Tap to Top, 89  
 Pan to Move Icon, 90  
 Quick Glance, 89  
 Smart Alert, 89  
 Tilt to Zoom, 89

moving widgets, 80

Multimedia Message Service (MMS), 215. *See also* Messaging app

multiple apps, running, 33-34

multiple Google accounts, 111

multiple tabs in Chrome, 101

Multi Window feature, 33-34, 85

music  
 data usage issues, 233  
 finding, 231  
 instant mix, 239  
 loading to Google Music, 233-235  
 managing, 236-237  
 Music Hub, 244  
 offline listening, 243-244  
 playing  
*controlling playback*, 238-240  
*offline listening*, 243-244  
*playlists*, 241-243  
*working while listening*, 240  
 playlists  
*adding songs to*, 242  
*creating*, 241  
*deleting*, 242  
*Playlists screen*, 236-237  
*rearranging songs in*, 243  
*renaming*, 242

purchasing, 231-233  
 shuffling, 236  
 synchronizing, 244

Music Hub app, 244

Music Manager. *See* Google Music Manager

Music Player app, 244

muting  
 calls, 205, 211  
 email conversations in Gmail, 116  
 phone when turned over, 90

My Apps option, 286

## N

navigating  
 Calendar main screen, 167-168  
 Chrome app, 93-94  
 Clock, 159  
 Contacts app, 186-187  
 Email app, 127-128  
 Gmail, 112  
 Google Play, 283  
 Messaging app, 216  
 Phone app, 204-205

Navigation app, 153-154. *See also* Google Maps

Near Field Communications. *See* NFC (Near Field Communications)

Network Action Predictions (Chrome), 103

network connections. *See* connections

network time sync, 158

New Arrivals list  
 Play Books app, 266  
 Play Magazines app, 276

New Playlist command, 241

NFC (Near Field Communications)  
 adding contacts with, 194  
 Android Beam  
*enabling*, 57-58  
*overview*, 58  
*sending files with*, 59-60  
*sending links to content*, 58-59

enabling, 57-58  
 overview, 57

S Beam  
*enabling*, 57-58  
*sending files*, 61

Night theme (Play Books app), 269

noise cancelling microphone, 7

Nook app, 274

Notification bar, 20

Notification icons, 20

notifications  
 blocking, 88  
 check-in notifications, enabling on Google Maps, 149  
 clearing, 21  
 Notification bar, 20  
 Notification icons, 20  
 Quick Settings, 21  
 viewing, 19-21

Notify Me of Nearby Offers option (Google Maps), 151-152

## O

offers (Google Maps), accessing, 151-152

offline Google Maps, 150-151

online resources, 303

onscreen keyboard  
 Continuous Input, 29  
 landscape mode, 28  
 overview, 25-27  
 symbols window, 27-28

opening  
 Phone app, 204-205  
 Play Books app, 264  
 Play Magazines app, 275-276

optimizing battery  
 battery care, 296  
 Power Saving options, 298-299  
 spare batteries, 296  
 usage monitoring, 297-298

## OS X

- Android File Transfer, installing, 36
- Google Music Manager
  - configuring*, 39-41
  - installing*, 37

Other Devices list (Chrome), 94, 100

## P

Page Buddy, 85

pairing Bluetooth devices, 44-46

Pan to Move Icon setting, 90

passkeys, 45

passwords for accounts, 183

permissions (Android apps), 284

phishing, reporting in Gmail, 116

Phone app, 203

- accepting calls, 205-206

- Auto Reject mode, 213

- call settings, 213-215

- conference calls, 212

- controlling calls, 210-212
- handling missed calls, 207-208

- navigating, 204-205

- opening, 204-205

- placing calls

- conference calls*, 212

- dialing from contact entry*, 209

- dialing from keypad*, 208-209

- dialing with voice*, 210

- receiving calls, 205

- rejecting calls, 206

- settings, 213-215

phone calls. *See* calls

photos

- contact photos,

- adding, 190

- setting as wallpaper, 75

- taking, 248-249

- viewing, 251-252

- zooming, 252

pinching, 25

placing calls

- conference calls, 212

- dialing from contact

- entry, 209

- dialing from keypad,

- 208-209

- dialing with voice, 210

Play Books app

- buying books, 265-267

- opening, 264

- options, 268-270

- reading books, 267

playing

- music

- controlling playback*, 238-240

- offline listening*,

- 243-244

- playlists*, 241-243

- working while listening*, 240

- videos, 245-246, 256-257

playlists

- adding songs to, 242

- creating, 241

- deleting, 242

- Playlists screen, 236-237

- rearranging songs in, 243

- renaming, 242

Playlists screen, 236-237

Play Magazines app

- choosing magazines,

- 275-276

- opening, 275-276

- options, 278

- reading magazines,

- 277-278

Play Music app, 229

- adding music to Google

- Music, 233-235

- controlling playback,

- 238-240

- finding music, 231

- installing, 230

- managing music,

- 236-237

- offline listening, 243-244

- playlists

- adding songs to*, 242

- creating*, 241

- deleting*, 242

- rearranging songs*

- in*, 243

- renaming*, 242

- purchasing music,

- 231-233

- synchronizing music, 244

- working while

- listening, 240

play music command, 230

Play Music icon, 231

Play Store. *See* Google Play

Play Store app icon, 283

Play Store icon, 230

POP3 accounts, adding,

- 124-127, 138-139

Popup Note, 91

pop-up windows,

- blocking, 106

Power button, 6

Power Saving options,

- 298-299

Preload Webpages dialog

- (Chrome), 106

PressReader, 275

Priority Sender list, 133

Privacy settings (Chrome),

- 102-104

problem solving

- Android updates,

- 294-295

- checking for*, 294

- delaying*, 295

- installing*, 294-295

- apps and memory,

- 299-300

- battery optimization

- battery care*, 296

- monitoring battery*

- use*, 297-298

- Power Saving options*,

- 298-299

- spare batteries*, 296

- data usage, 300-302

- exterior care and protec-

- tion, 302-303

- online resources, 303

- Wi-Fi connections, 50

- profiles (Bluetooth), 48

- protecting Galaxy Note II

- exterior, 303

- proximity sensor, 4



public transportation  
options on Google  
Maps, 147

purchasing  
Android apps, 285  
books from Play Books  
app, 265-267  
music from Play Music  
app, 231-233

push email delivery, 184

## Q

Quick Commands, 11-12

Quick Connect bar, 187

Quick Glance setting, 89

Quick Responses, 177

quick responses (Email  
app), 132

Quick Settings, 21

## R

Rate & Review option (Play  
Books app), 266

Read Aloud option (Play  
Books app), 269

readers. *See* book readers

reading  
books  
*with Kindle app*,  
272-275  
*with Play Books  
app*, 267

email  
*in Email app*, 130-131  
*in Gmail*, 115-116

magazines in Play Maga-  
zines app, 277-278

read reports, 219

rear camera, 6

rearranging playlists, 243

receiving  
calls, 205  
messages, 226-227

recording videos, 253

Recording Mode dialog, 253

recurring events,  
adding, 172

registering Kindle app,  
271-275

reinstalling Android  
apps, 289

Reject Call with Message  
option, 206

rejecting calls, 206

Remote Security Adminis-  
tration, 184

removing  
accounts, 186  
app shortcuts, 24  
widgets, 80

Rename command, 242

renaming playlists, 242

reporting  
phishing, 116  
spam, 116

reports  
delivery reports, 218-219  
read reports, 219

resizing widgets, 79

responding to invitations  
corporate event invita-  
tions  
*from calendar*, 176  
*from email*, 175

Google event invitations  
*from calendar*, 175  
*from email*, 174

via Quick Responses, 177

Return to Call in Progress  
option, 212

reverse pairing Bluetooth  
devices, 46

reviewing  
books, 266  
magazines, 276

ringtones, choosing, 83

rotating screen, 25

running multiple apps,  
33-34

## S

Samsung accounts, 14

Samsung S Beam. *See*  
S Beam

Save Contact To dialog, 191

S Beam  
enabling, 57-58  
sending files, 61

scaling text, 104

screen brightness, 85

screen captures with  
S Pen, 12

Screen mode, 85

Screen Power Saving  
option, 298

screens  
Dialing, 210-211

Home screens, 20  
*adding bookmarks  
to*, 98  
*adding contacts to*,  
200-201  
*App folders, creating*,  
23-24  
*app shortcuts, 22-24  
creating*, 24  
*Favorites Tray*, 24  
*Launcher icon*, 24  
*notifications*, 21  
*widgets*, 78-80

Lock, 18-19, 204

rotating, 25

Screen mode, 85

touchscreen, 24-25

Unlock, 18-19

Upload Video, 260

scrolling with S Pen, 11

search engines,  
choosing, 102

Secure Sockets Layer  
(SSL), 127

security  
SSL (Secure Sockets  
Layer), 127  
TLS (Transport Layer  
Security), 127

sending  
files  
*with Android Beam*,  
59-60  
*with S Beam*, 61

links to content, 58-59

sensors  
light sensor, 4  
proximity sensor, 4

Separate Contact com-  
mand, 200

separating contacts, 200

service set identifier  
(SSID), 49



## settings

- Accessibility, 81-82
- Accounts, 182-186
- Application Manager, 299-300
- Battery, 297-298
- Bluetooth
  - Bluetooth settings*, 47
  - device settings*, 47-48
- Calendar, 169-171
- call settings, 213-215
- Camera app, 249-251
- Chrome app, 102-107
  - Accessibility*, 104-105
  - Bandwidth Management*, 106-107
  - content settings*, 105-106
  - general settings*, 102
  - Network Action Predictions*, 103
  - Privacy*, 102-104
- Clock
  - alarm settings*, 160-161
  - desk clock settings*, 163
- Contacts, 195
- Data Usage, 301-302
- Date and Time, 157-159
  - 24-hour time format*, 159
  - date format*, 159
  - network time sync*, 158
  - time zone*, 158
- Device
  - Blocking mode*, 88
  - Home Screen mode*, 87
  - Motion setting*, 89-90
- Display, 84-86
- Dock mode settings, 166-167
- Email app, 132-139
- first-time setup, 13-17
- Gmail, 117-119
- Google Maps, 148-149
  - Location Settings*, 145
  - offers settings*, 151-152
- Google Now, 143-144
- Google Play, 288-289
- Kindle app, 274
- Language, 80-84
- Messaging, 216-222
- Mobile Networks, 62-64
- Notification bar Quick Settings, 21
- Play Books app, 268-270
- Play Magazines app, 278
- Power Saving options, 298-299
- Sound, 83-84
- S Pen, 91
- YouTube app, 258-259
- setting up
  - ActiveSync, 182-183
  - first-time setup, 13-17
  - Google Map, 145
  - Wi-Fi Direct, 53
- Set Wallpaper icon, 76
- Set Wallpaper command, 74-76
- Share Shot feature, 250
- Share Via dialog, 246, 252
- sharing
  - books, 266
  - location with friends, 148
  - magazines, 276
  - videos, 246-247
- Shift key, 26
- shooting modes (Camera app), 251
- shortcuts
  - app shortcuts
    - creating*, 22
    - removing*, 24
  - Dock mode (Clock), 165
  - to VPNs (virtual private connections), 68
- Short Message Service (SMS), 215. *See also* Messaging app
- Show All Labels command (Gmail), 120
- shuffling music, 236
- signatures, adding to messages, 222
- Similar Magazines list (Play Magazines app), 276
- sizing widgets, 79
- sleep settings, 86
- sliding, 25
- Smart Alarm, 161
- Smart Alert, 89
- smiley icons, 223
- SMS (Short Message Service), 215. *See also* Messaging app
- Snooze feature, 161
- social networking, Flipboard app, 279
- Software Update, 294
- Software Update dialog, 295
- solving problems
  - Android updates, 294-295
    - checking for*, 294
    - delaying*, 295
    - installing*, 294-295
  - apps and memory, 299-300
  - battery optimization
    - battery care*, 296
    - monitoring battery use*, 297-298
    - Power Saving options*, 298-299
    - spare batteries*, 296
  - data usage, 300-302
  - exterior care and protection, 302-303
  - online resources, 303
  - with Wi-Fi
    - connections, 50
- sound settings, 83-84. *See also* music
- spam
  - reporting in Gmail, 116
  - Messaging app settings, 222
- spare batteries, 296
- speakers, 6
- speech recognition (Google Now), 144
- S Pen
  - Air View, 8-10
  - gestures, 10-19
  - Handwriting mode, 31
  - Haptic feedback, 91
  - overview, 7-8
  - Quick Commands, 11-12
  - screen captures with, 12
  - scrolling with, 11
  - settings, 91
  - S Pen button, 7

S Pen Keeper, 91  
 stylus tip, 7  
 text entry, 31-32

S Pen Keeper, 91

SSID (service set identifier), 49

SSL (Secure Sockets Layer), 127

stars (Gmail), 112

starting mobile Wi-Fi hotspots, 69-71

static wallpaper, 76

stickers, adding to events, 172

stopping apps, 299-300

Stopwatch, 159

stylus tip (S Pen), 7

subscribing to magazines, 276

swiping, 25

switching apps, 35

Symbols key, 27

Symbols window, 27-28

synchronization software, 35
 

- Android File Transfer, installing on Apple Mac OS X, 36
- Google Music Manager *configuring*, 39-41 *installing on Apple Mac*, 37 *installing on Windows*, 38

synchronizing
 

- Gmail accounts, 119
- Gmail labels, 120
- music, 244
- network time sync, 158

## T

taking photos, 248-249

TalkBack, 81

task lists, viewing, 169

tasks
 

- adding, 178
- marking as completed, 178
- task lists, viewing, 169

text editing, 30-31

text entry
 

- dictation, 29
- keyboard
  - Continuous Input*, 29
  - landscape mode*, 28
  - overview*, 25-27
  - with S Pen, 31-32
  - symbols, 27-28

text messaging. *See* Messaging app

text scaling, 104

Tilt to Zoom setting, 89

time
 

- Clock
  - alarms*, 160-161
  - desk clock*, 163
  - Dock mode*, 164-167
  - navigating*, 159
  - World Clock*, 162
- Date and Time setting, 157-159

timers, blocking, 88

Timer setting (Camera app), 254

time zone
 

- selecting for meetings, 172
- setting, 158, 170

TLS (Transport Layer Security), 127

top external features, 7

touch, 24

touch and hold, 24

touchscreen, 5, 24-25

TouchWiz apps
 

- running multiple*, 33-34
- switching between*, 35

gestures, 24-25

Home screens, 20
 

- App folders*, 23-24
- app shortcuts*, 22
- notifications*, 21
- Favorites Tray*, 24

menus, 32

onscreen keyboard, 25-29

text editing, 30-32

touchscreen, 24-25

Unlock screen, 18-19

Transport Layer Security (TLS), 127

troubleshooting. *See* problem solving

Turn Off Haptic Feedback option, 299

Twitter accounts
 

- adding, 181-186
- removing, 186

## U

Unhold command, 211

uninstalling Android apps, 287

unlocking phone, 18-19

Unlock screen, 18-19

updates (Android), 294-295
 

- automatic updates, 287
- checking for, 294
- delaying, 295
- installing, 294-295
- manual updates, 289-290

uploading
 

- music to Google Music, 233-235
- videos to YouTube, 260

Upload Video screen, 260

Users Also Viewed list (Play Books app), 266

## V

vCards, adding contacts from, 193

vibration settings, 83-84

videos
 

- attaching to messages, 224-225
- camera settings, 253-254
- playing, 245-246, 256-257
- recording, 253
- sharing, 246-247
- YouTube app, 254
  - main screen*, 255
  - playing videos*, 256-257
  - settings*, 258-259

*sharing videos on*, 247  
*uploading videos*, 260  
 Video to Upload dialog, 260  
 viewing  
   bookmarks, 98  
   calendars, 169  
   notifications, 19-21  
   photos, 251-252  
   task lists, 169  
 views, Air View, 8-10  
 virtual private networks.  
   See VPNs (virtual private  
   networks)  
 voice, dialing calls with, 210  
 voicemail, sending calls  
   to, 206  
 Voice Search feature  
   (Google Now), 144  
 Voice settings (Google  
   Now), 143-144  
 volume  
   alarms, 161  
   sound settings, 83  
   volume buttons, 5  
 VPNs (virtual private  
   networks)  
   adding, 64-65  
   connecting to, 66-68  
   creating shortcuts to, 68  
   deleting, 67  
   editing, 67

## W

wallpaper, 74  
   finding, 76  
   live wallpaper, 76  
   static wallpaper, 76  
   wallpaper from Gallery  
   pictures, 75  
 watching video, 245-246,  
   256-257  
 web browsing with  
   Chrome, 93  
   bookmarks, 97  
     *adding to Home*  
     *screen*, 98  
     *creating*, 99  
     *deleting*, 98  
     *editing*, 98  
     *managing*, 98  
   *Most Visited sites list*,  
     99-100  
   *Other Devices list*, 100  
   viewing, 98  
   browser settings,  
     102-107  
     *Accessibility*, 104-105  
     *Bandwidth Manage-*  
     *ment*, 106-107  
     *content settings*,  
     105-106  
     *general settings*, 102  
     *Network Action Pre-*  
     *dictions*, 103  
     *Privacy*, 102-104  
   browser tricks, 96-97  
   browsing in secret, 101  
   Developer Tools, 107  
   landscape  
     orientation, 96  
   multiple tabs, 101  
   navigation, 93-94  
   web page options, 95  
   zooming in/out, 97  
 White Balance setting (Cam-  
   era app), 254  
 widgets, 21. *See also* apps  
   adding to Home screens,  
     78-79  
   Contact widget, 201  
   moving, 80  
   removing, 80  
   resizing, 79  
 Wi-Fi Direct  
   connecting with, 54-55  
   overview, 53  
   setting up, 53  
   WiFi Shoot, 56  
 Wi-Fi networks  
   advanced Wi-Fi options,  
     51-52  
   connecting to, 49-50  
   mobile Wi-Fi hotspots  
     *limiting who can*  
     *connect*, 71  
     *starting*, 69-71  
   network options, 50  
   Wi-Fi Direct  
     *connecting with*,  
     54-55  
     *overview*, 53  
     *setting up*, 53  
     *WiFi Shoot*, 56  
 Windows  
   configuring Google  
   Music Manager on,  
     39-41  
   installing Google Music  
   Manager on, 38  
 Wireless Fidelity. *See* Wi-Fi  
   networks  
 work email accounts  
   adding, 121-124  
   Email app settings,  
     134-139  
 work event invitations,  
   responding to  
     from calendar, 176  
     from email, 175  
 World Clock, 162

## X-Y-Z

YouTube app, 254  
   main screen, 255  
   playing videos, 256-257  
   settings, 258-259  
   sharing videos on, 247  
   uploading videos, 260  
  
 Zinio, 275  
 zooming  
   Chrome app, 97  
   photos, 252