

Steven Mann
Chuck Rivel
Ray Barley
Jim Pletscher
Aneel Ismaily

Microsoft®
SharePoint® 2010
Business Intelligence

UNLEASHED

SAMS



Steven Mann
Chuck Rivel
Ray Barley
Jim Pletscher
Aneel Ismaily

Microsoft® SharePoint® 2010 Business Intelligence

UNLEASHED

SAMS

800 East 96th Street, Indianapolis, Indiana 46240 USA

Microsoft® SharePoint® 2010 Business Intelligence Unleashed

Copyright © 2011 by Pearson Education, Inc.

All rights reserved. No part of this book shall be reproduced, stored in a retrieval system, or transmitted by any means, electronic, mechanical, photocopying, recording, or otherwise, without written permission from the publisher. No patent liability is assumed with respect to the use of the information contained herein. Although every precaution has been taken in the preparation of this book, the publisher and author assume no responsibility for errors or omissions. Nor is any liability assumed for damages resulting from the use of the information contained herein.

ISBN-13: 978-0-672-33551-8

ISBN-10: 0-672-33551-4

Library of Congress Cataloging-in-Publication Data is on file.

Printed in the United States of America

First Printing: May 2011

Trademarks

All terms mentioned in this book that are known to be trademarks or service marks have been appropriately capitalized. Pearson Education, Inc. cannot attest to the accuracy of this information. Use of a term in this book should not be regarded as affecting the validity of any trademark or service mark.

Warning and Disclaimer

Every effort has been made to make this book as complete and as accurate as possible, but no warranty or fitness is implied. The information provided is on an “as is” basis. The author and the publisher shall have neither liability nor responsibility to any person or entity with respect to any loss or damages arising from the information contained in this book.

Bulk Sales

Pearson offers excellent discounts on this book when ordered in quantity for bulk purchases or special sales. For more information, please contact:

U.S. Corporate and Government Sales

1-800-382-3419

corpsales@pearsontechgroup.com

For sales outside of the U.S., please contact:

International Sales

+1-317-581-3793

international@pearsontechgroup.com

Editor-in-Chief

Greg Wiegand

Executive Editor

Neil Rowe

Development Editor

Mark Renfrow

Managing Editor

Kristy Hart

Project Editor

Andy Beaster

Copy Editor

Keith Cline

Indexer

Erika Millen

Proofreader

Charlotte Kughen

Technical Editor

Mark Meyerovich

Publishing Coordinator

Cindy Teeters

Book Designer

Gary Adair

Composition

Gloria Schurick

Contents at a Glance

Introduction	1
Part I Getting Started	
1 Introduction to the Business Intelligence Center in SharePoint 2010.....	7
2 Configuring and Using Excel Services in SharePoint 2010	17
Part II Reporting Services	
3 Reporting Services Setup and Installation.....	37
4 Report Management	47
5 Using the Report Viewer Web Parts.....	71
Part III PerformancePoint Services	
6 PerformancePoint Services Configuration	89
7 PerformancePoint Services Development.....	99
8 PerformancePoint Services Security.....	141
Part IV PowerPivot	
9 PowerPivot for Excel	151
10 PowerPivot with SharePoint	167
Part V Visio Services	
11 Configuring Visio Graphics Service.....	187
12 Visio Graphics Service Development.....	197
13 Visio Graphics Service Security.....	223
Part VI End-to-End Solutions	
14 Building a Management Dashboard Solution	235
15 Integrating Visio and Excel Services.....	271
Part VII Troubleshooting	
16 Reporting Services Issues	281
17 PerformancePoint Services Issues	287
18 PowerPivot Issues	297
19 Visio Services Issues	305
Index	313

Table of Contents

Introduction	1
How This Book Is Organized	2
What This Book Does Not Cover	2
Expanding Your Knowledge.....	3
Part I Getting Started	
1 Introduction to the Business Intelligence Center in SharePoint 2010	7
Planning for Your Business Intelligence Center	7
Server Prerequisites and Licensing Considerations.....	7
Choosing BI Tools.....	8
Creating and Configuring Your Business Intelligence Center	9
Creating a New Site Collection Using the Business Intelligence Center Site Collection Template	9
Reviewing the Business Intelligence Center	9
Reviewing Features Enabled for BI	12
Creating a New Subsite Using the Business Intelligence Center Site Template	13
Summary	15
Best Practices	15
2 Configuring and Using Excel Services in SharePoint 2010	17
Configuring Excel Services	17
Global Settings.....	18
Trusted File Locations.....	22
Trusted Data Providers.....	25
Trusted Data Connection Libraries	26
User-Defined Functions	27
Using Excel Services	28
Creating a Library for Excel Workbooks	28
Adding Excel Workbooks to the Library	29
Accessing Excel Workbooks from the Library.....	31
Using the Excel Web Access Web Part	31
Summary	33
Best Practices	33

Part II Reporting Services

3	Reporting Services Setup and Configuration	37
	Installing Reporting Services	38
	Installing the Reporting Services Add-In for SharePoint	39
	Configuring the Reporting Services Add-In for SharePoint Integration	40
	Adding Content Types to a Document Library.....	42
	Summary	45
	Best Practices.....	45
4	Report Management	47
	Deploying Reports.....	48
	Upload Report to Document Library	48
	Deploy Report from BIDS.....	49
	Save from Report Builder.....	51
	Built-In SharePoint Functions	53
	Shared Schedules.....	55
	Processing Options.....	58
	Data Sources	60
	Shared Datasets	62
	Parameters.....	64
	Subscriptions.....	65
	Summary	69
	Best Practices.....	69
5	Using the Report Viewer Web Parts	71
	Configuring the SharePoint Integrated Mode Web Part.....	71
	SharePoint Integrated Mode Web Part Properties	75
	SharePoint Integrated Mode Web Part Connections	77
	Configuring the Native Mode Web Parts	81
	Summary	85
	Best Practices.....	86

Part III PerformancePoint Services

6	PerformancePoint Services Configuration	89
	Adding PerformancePoint Services.....	89
	Setting up the Secure Store Service.....	90
	Applying PerformancePoint Service Application Settings	91
	Enabling Non-Business Intelligence Center Sites with PerformancePoint Services	93

Setting Trusted Data Source Locations and Trusted Content Locations	96
Summary	98
Best Practices	98

7 PerformancePoint Services Development 99

Using Dashboard Designer	99
Creating Data Connections	102
Analysis Services Data Connection	102
Excel Services Data Connection	104
SharePoint List Data Connection	107
SQL Server Table Data Connection	108
Building Key Performance Indicators	109
Blank KPI	110
Objective	112
Developing Scorecards	113
Creating Reports	117
Analytic Chart	118
Analytic Grid	119
Strategy Map	121
KPI Details	122
Reporting Services	123
Excel Services	124
ProClarity Analytics Server Page	125
Web Page	126
Filtering Data	126
Custom Table	127
MDX Query	127
Member Selection	128
Named Set	128
Time Intelligence	129
Time Intelligence Connection	129
Constructing Dashboards	130
Connecting Filters to Dashboard Content Objects	131
Linking KPI Details Report to a Scorecard	133
Creating Multiple Pages in a Dashboard	134
Deploying the Dashboard to SharePoint	135
User Interaction with the Decomposition Tree	137
Summary	139
Best Practices	139

8 PerformancePoint Services Security	141
Data Source Delegation.....	141
PerformancePoint Services and SharePoint Permissions	144
Summary	147
Best Practices.....	147

Part IV PowerPivot

9 PowerPivot for Excel	151
Overview of PowerPivot.....	151
Installing PowerPivot	152
Using PowerPivot.....	153
Getting the Data	154
Importing from a Database	154
Importing from a Flat File	157
Preparing the Data.....	158
Creating Relationships Between the Tables	159
Adding Calculated Fields.....	160
Hiding Unwanted Fields.....	161
Presenting the Data.....	162
Summary	165
Best Practices.....	165
10 PowerPivot for SharePoint	167
Overview of PowerPivot for SharePoint	167
Installing PowerPivot for SharePoint	168
Hardware and Software Requirements	168
New Single-Server Install	169
Multiserver Farm Install	171
Using PowerPivot for SharePoint	176
PowerPivot Gallery	176
Data Refresh and Snapshots.....	179
Publishing Workbooks.....	180
Controlling Data Exposure and Spreadmarts	181
Monitoring PowerPivot.....	182
Enabling Usage and Health Data Collection	182
Using the PowerPivot Management Dashboard	183
Summary	184
Best Practices.....	184

Part V Visio Services

11	Configuring Visio Graphics Service	187
	Adding the Visio Graphics Service	187
	Configuring Visio Graphics Service Global Settings	189
	Configuring a Visio Graphics Service Global Settings Parameters by Using Windows PowerShell	190
	Visio Graphics Service Trusted Data Providers	191
	Visio Process Repository Site Template	193
	Summary	195
	Best Practices	195
12	Visio Graphics Service Development	197
	Prerequisites	197
	Developing a Data-Driven Visio Web Drawing	198
	Publish a Drawing to a SharePoint 2010 Document Library	212
	Browsing a Visio Web Drawing Online	213
	Refreshing Data in a Visio Web Drawing	214
	Embedding a Drawing into a SharePoint Page Using the Visio Web Access Web Part	214
	Interaction with Other SharePoint 2010 Applications	218
	Custom Data Providers	220
	Summary	221
	Best Practices	221
13	Visio Graphics Service Security	223
	Internal Data Sources	223
	External Data Sources	224
	Adding a New Trusted Data Provider	224
	Data Source Delegation	226
	Publishing an ODC File to SharePoint 2010 with Secure Store Service Security Model	229
	Summary	231
	Best Practices	231

Part VI End-to-End Solutions

14	Building a Management Dashboard Solution	235
	Preparing the Management Console	235
	Creating the Site Collection and Sites	235
	Customizing the Navigation	237

Configuring Reporting Services.....	239
Configuring PerformancePoint Services	239
Deployed Solution	239
Creating a Reporting Services Report with Report Builder 3.0	240
Create a Data Source.....	241
Create a Dataset	242
Create a Report	245
Creating PerformancePoint Content.....	250
Creating the Analysis Services Data Connection.....	251
Creating the Scorecard and KPIs	252
Creating Reports	259
Creating the Filter.....	262
Building and Deploying the PerformancePoint Dashboard	263
Interacting with the BI Dashboard.....	266
Summary	269
Best Practices	269
15 Integrating Visio and Excel Services	271
Deployed Solution	271
Creating a Visio Web Drawing with Microsoft Visio 2010	
Premium Edition	272
Summary	277
Best Practices.....	277
Part VII Troubleshooting	
16 Reporting Services Issues	281
How Do I Create a Shared Dataset in Report Builder?.....	281
Report Builder Getting Started Dialog Not Displayed	282
Enable Report Builder to Create or Edit Reports	283
Is the Reporting Services Add-In Installed?.....	284
How Do I Activate the Report Server Integration Feature?.....	285
How Do I Create Report Artifacts in a SharePoint Library?.....	285
Checking Report Project Settings	286
Summary	286
Best Practices.....	286
17 PerformancePoint Services Issues	287
PerformancePoint Services Is Not Configured Correctly	287
Dashboard Connection Formula	289
Creating PerformancePoint Content Items in a Nontrusted Location.....	292
Insufficient Security for Dashboard Deployment	293

Cube Action Not Available on a PerformancePoint Services Report.....	294
Summary	295
Best Practices	296
18 PowerPivot Issues	297
Troubleshooting PowerPivot for Excel	297
Enabling Tracing from PowerPivot for Excel	298
Disable Tracing from PowerPivot for Excel.....	299
Analyze Traces from PowerPivot for Excel.....	300
Troubleshooting PowerPivot for SharePoint	300
Common Issues.....	301
Installing PowerPivot.....	302
Using PowerPivot.....	302
Summary	303
19 Visio Services Issues	305
Visio Graphics Service Data Refresh Failed (Event ID 8037, 8038, 8062, 8063)	305
Visio Configuration Database Not Found (Event ID 8040).....	306
Visio Graphics Service Untrusted Data Provider Request (Event ID 8041)	307
Visio Graphics Service Failed to Generate Diagram (Event ID 8060, 8042, 8043)	307
Visio Proxy Initialization Failed (Event ID 8044)	307
Visio Application Proxy Has Invalid Endpoint (Event ID 8049)	308
Visio Graphics Service Data Provider Not Found (Event ID 8050).....	310
Visio Graphics Service File Loading Error (Event ID 8051, 8061)	310
Summary	311
Best Practices	311
Index	313

About the Authors

Steve Mann was born and raised in Philadelphia, Pennsylvania, where he still resides today. He is an Enterprise Applications Engineer for Morgan Lewis and has more than 17 years of professional experience. Steve was previously a Principal Architect for RDA Corporation where he worked for over 13 years.

For the past 8 years, he has primarily focused on collaboration and business intelligence solutions using Microsoft technologies. Steve managed the internal BI Practice Group at RDA for several years. He was also heavily involved within RDA's Collaboration/Search Practice Group.

He has authored and co-authored several books related to the subject of SharePoint Server 2010. Steve's blog site can be found at www.SteveTheManMann.com.

Chuck Rivel is currently employed at RDA as a Principal Architect which involves scoping, designing, developing and delivering custom data warehouse projects for many different industries. He has over 14 years' experience working with MS technologies and the last 8 years have been focused on DW\BI development. Currently, he is the BI Technical Lead for RDA, which is responsible for the technical direction of the BI team within RDA and for creating training programs for existing RDA employees to learn the BI toolset.

Ray Barley is a Principal Architect at RDA Corporation and has worked as a developer, analyst, project manager, architect, trainer and independent consultant. He has been focused on architecting and delivering Business Intelligence solutions since 2005. Ray helps to run the Baltimore SQL Server User group, is a frequent speaker at local user group meetings, and a frequent contributor to MSSQLTips.com.

Jim Pletscher is a Senior BI Consultant with RDA and has worked in the IT field for more than 15 years. Jim first began exploring OLAP technologies with SQL Server 2000, and has worked extensively with SQL Server 2005 and 2008, developing Reporting and Analysis solutions for numerous clients in a variety of industries over the past 8+ years. He is originally from Pennsylvania, and lives there now, but has also lived in Northern California as well.

Aneel Ismaily was born and raised in Karachi, Pakistan and then moved to the United States at the age of 18. Since then he has lived in Atlanta, GA. Aneel joined Georgia State University in 2001 and finished his BS degree from there in Computer Science. He is currently enrolled in a professional MBA program at Georgia State University and expecting to graduate in Dec, 2012. Aneel brings over eight years of experience to RDA in designing, developing, deploying, and supporting Business Intelligence Solutions. He currently holds Sr. Software Engineer Position with RDA. Prior to RDA, Aneel was employed at BCD Travel as a BI Solution Developer and previously as a Database Administrator. You can learn more about Aneel at <http://www.linkedin.com/in/aismaily>.

Dedications

To my family, especially my wife Jen, for being so excited for me on getting the opportunity to write the book and then pushing me to get it done.
—Chuck Rivel

To my wife Karen, and our children Katelyn, Jessica and Joshua. To my dad for teaching me the value of perseverance.
—Ray Barley

I'd like to thank RDA and my colleagues there for creating an environment where we can learn together and encouraging me to take on new challenges. I'd also like to thank Ralph Ceseña and Dominic Eve who first got me interested in Business Intelligence technologies many years ago.
—Jim Pletscher

I dedicate this book to each and every member of my family for their unconditional support in all aspects of my life. I love you all!
—Aneel Ismaily

Acknowledgments

Special thanks to Deepak Gupta from RDA for pitching the idea to me for a SharePoint BI book. In addition to Deepak, I really appreciated my colleagues' efforts and assistance in authoring this with me - I wouldn't have had enough time or energy to complete this on my own. Thanks to Neil Rowe and Sams Publishing for allowing us to produce a focused authoritative guide within the *Unleashed* series.

—Steve Mann

I want to thank all of the colleagues that I have worked with over the years. Because you shared your knowledge to me on the different technologies we have worked with over the years, those experiences gave me the confidence to want to share my thoughts in an effort to help others learn in the same way as I have learned from all of you. In addition, I want to thank Sams Publishing for providing this vehicle to me and my fellow co-authors. Lastly, special thanks to Steve Mann for asking me to come on board.

—Chuck Rivel

Thanks to Steve Mann for asking me to participate in this project. Thanks to all of my colleagues who over the years have shared their knowledge.

—Ray Barley

To my parents, who bought me my first computer, a Commodore64, and started what has become my career with computers. To my wife, Treva, and kids, Rebecca, Colin, and Hayden, who keep life fun and exciting and remind me not to sweat the small stuff.

—Jim Pletscher

Thanks to Steve Mann, Chuck Rivel, Ray Barley and Jim Pletscher for giving me this opportunity. I also thank the entire team of Sams Publishing for their support during the book review.

—Aneel Ismaily

We Want to Hear from You!

As the reader of this book, you are our most important critic and commentator. We value your opinion and want to know what we're doing right, what we could do better, what areas you'd like to see us publish in, and any other words of wisdom you're willing to pass our way.

As an associate publisher for Sams Publishing, I welcome your comments. You can email or write me directly to let me know what you did or didn't like about this book—as well as what we can do to make our books better.

Please note that I cannot help you with technical problems related to the topic of this book. We do have a User Services group, however, where I will forward specific technical questions related to the book.

When you write, please be sure to include this book's title and author as well as your name, email address, and phone number. I will carefully review your comments and share them with the author and editors who worked on the book.

Email: feedback@sampublishing.com

Mail: Neil Rowe
Executive Editor
Sams Publishing
800 East 96th Street
Indianapolis, IN 46240 USA

Reader Services

Visit our website and register this book at informit.com/register for convenient access to any updates, downloads, or errata that might be available for this book.

Introduction

B*usiness intelligence* (BI) has been around for many more years than you might think. *Decision support systems* (DSS) and *executive information systems* (EIS) from the 1970s and 1980s, along with *artificial intelligence* (AI) systems from the 1990s, can now all be considered as part of what BI comprises today.

In brief, BI refers to the aggregation of all relevant business information, put together such that correlations and metrics may be monitored and analyzed, and the making of decisions based on trends and the results of the analyzed information.

In the early 2000s, when economic conditions became rough, companies began focusing on their businesses more closely. This produced the essential need for BI solutions. Many organizations began building data warehouses using SQL Server 2000 and Analysis Services 2000. Microsoft recognized this need and approached the development of their SQL Server 2005 product with BI in mind.

The release of SQL Server 2005 brought BI to the forefront of Microsoft solutions. Although this took care of the data and reporting components, it did not address the core monitoring and planning aspects of a BI solution. To fill this gap, Microsoft began developing Office *PerformancePoint Server* 2007 (PPS) in conjunction with the acquisition of ProClarity. At the same time, *Microsoft Office SharePoint Server* 2007 (MOSS 2007) was being promoted as the main delivery mechanism for BI solutions using Microsoft technologies, and was at this point being referred to as the Microsoft BI stack. The Microsoft BI stack fulfilled the business needs, but the solution was made up of various separate components. Enter Office 2010.

With the releases of SharePoint Server 2010 and SQL Server 2008 R2, the convergence of the BI stack is more evident. Once-separated components (MOSS and PPS) are now combined within the same architecture, and tighter integration now exists between SharePoint and Reporting Services and Analysis Services.

The Office 2010 platform forces technological change within skillsets and roles. The BI specialists who may be considered SQL Server experts now need to understand SharePoint and its role within a BI solution. Conversely, SharePoint experts and developers need to be able to use SharePoint as a delivery mechanism for BI solutions.

Previously, if you needed to understand BI solutions using SQL Server, you referred to a SQL Server or data warehousing publication. If you needed to understand SharePoint, you referred to SharePoint-related material. With the tighter integration of the Microsoft BI Stack, we believe there is a need to combine the components of BI and SharePoint into one reference book for this integration. This book bridges the gap between the two worlds of database technology and portal solutions.

How This Book Is Organized

- ▶ Part I, “Getting Started,” explains how to prep SharePoint 2010 for the deployment of BI solutions. The Business Intelligence Center is described, and you learn about Excel Services.
- ▶ Part II, “Reporting Services,” focuses on the integration and use of Reporting Services within SharePoint, including uses of the Report Viewer web part.
- ▶ Part III, “PerformancePoint Services,” discusses the configuration and development of PPS (which is now part of SharePoint 2010 as an application service), along with security aspects of PPS.
- ▶ Part IV, “PowerPivot,” explains how Analysis Services and SharePoint 2010 have been integrated to produce a mechanism for business users to publish analytical information via Excel.
- ▶ Part V, “Visio Services,” explores how the visualization of BI data is becoming as important as the information it provides. Leveraging Visio Services within SharePoint adds an interesting component to BI solutions.
- ▶ Part VI, “End-to-End Solutions,” covers how all the components and services all fit together (in contrast to earlier chapters where these components and services are examined from discrete perspectives). This part provides two scenario-based end-to-end solutions that explain how to construct a BI solution.
- ▶ Part VII, “Troubleshooting,” outlines resolutions to common problems so that you do not have to search the Internet for guidance with regard to currently known issues and errors.

What This Book Does Not Cover

This book explains the integration and uses of SQL Server 2008 R2 components with SharePoint Server 2010. It does not discuss the processes of building a data warehouse, dimensional model, or Analysis Services cube. These are separate core topics that need to be explored on their own.

Some BI specialists consider *Business Connectivity Services* (BCS) an extension of business solutions. Although BCS does provide access to external data sources (which could include data warehouses or central repositories), this book focuses more on the commonality of SQL Server components in SharePoint 2010. To really understand BCS and the various capabilities, you should refer to publications that deal specifically with that subject; general SharePoint 2010 books just scratch the surface.

Another extension possible through the leveraging of BI data within SharePoint is InfoPath 2010. By creating forms with InfoPath 2010, you can leverage data from BCS, external data sources via Web Services, or from direct database connections. However, this subject area is beyond the scope of this book. To explore the possibilities of InfoPath 2010 within a SharePoint environment, refer to *InfoPath with SharePoint 2010 How-To* (Sams, 2010).

Expanding Your Knowledge

We hope that this book provides a solid foundation of understanding about potential BI solutions via SharePoint and SQL Server and that you find everything you need here. However, business requirements and changing needs usually require custom solutions that cannot all be possibly documented in one location.

So, to stay current and find additional answers if needed, consider the following resources a good investment of your time and attention:

- ▶ **Microsoft BI site:** <http://www.microsoft.com/bi/>
- ▶ **Microsoft Office Developer Center:** <http://msdn.microsoft.com/en-us/office/default.aspx>
- ▶ **Microsoft SharePoint 2010 site:** <http://sharepoint.microsoft.com/>
- ▶ **RDA BI/SQL Server Practice Group Blog:** <http://bisqlserver.rdacorp.com/>

This page intentionally left blank

CHAPTER 3

Reporting Services Setup and Configuration

There are two options for installing Reporting Services: native mode and SharePoint Integrated mode. Native mode includes the Report Manager web application that can be used to manage all aspects of managing, deploying, and executing reports. Reporting Services can be installed in native mode completely independent of SharePoint. With SharePoint Integrated mode, the Report Manager is disabled and all report management and execution functions are provided in SharePoint. The considerations and steps for installing and configuring Reporting Services in SharePoint Integrated mode are the topic of this chapter.

Reporting Services uses a SQL Server database to store reports, subscriptions, and so on. This database is named ReportServer by default. The contents of the database are different depending on how it is created; i.e. whether it is created for Reporting Services running in native mode or SharePoint Integrated mode. The creation of the appropriate database can be handled by running the Reporting Services Configuration Manager or during the installation of Reporting Services and the database engine.

After installing or configuring Reporting Services to run in SharePoint Integrated mode, the Reporting Services Add-In for SharePoint must be installed and configured. The Add-In is a SharePoint feature that is activated at the site collection level and provides the infrastructure for storing, running and managing reports within SharePoint.

There are a number of advantages to installing Reporting Services in SharePoint Integrated mode versus native mode. First and foremost is the fact that the integration of Reporting Services with SharePoint is seamless. Reports are stored in SharePoint document libraries, allowing users to

IN THIS CHAPTER

- ▶ Installing Reporting Services
- ▶ Installing the Reporting Services Add-In for SharePoint
- ▶ Configuring the Reporting Services Add-In for SharePoint Integration
- ▶ Adding Content Types to a Document Library

interact with them from the familiar SharePoint web interface. Report security is handled in SharePoint rather than in the Report Manager, which implements its own security scheme.

Installing Reporting Services

Reporting Services is one of several features that can be installed from SQL Server setup along with the relational database engine. There are two steps during the setup that are important to highlight to allow the setup to do the majority of the work in getting Reporting Services running in SharePoint Integrated mode. First, as shown in Figure 3.1, choose the **SQL Server Feature Installation** option. The SQL Server PowerPivot for SharePoint option is not relevant to this discussion. The All Features with Defaults option is normally a good choice, except that it installs and configures Reporting Services in native mode, which is of no benefit.

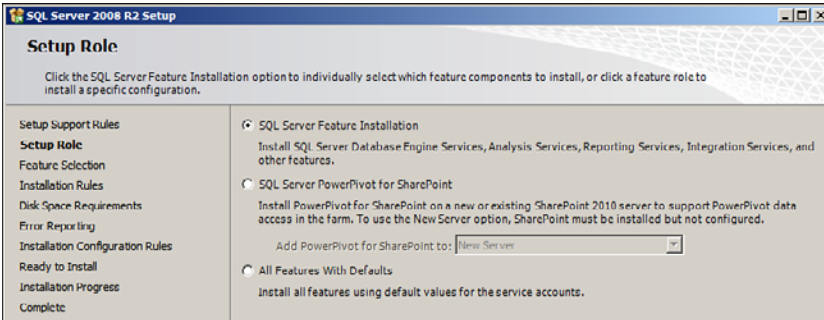


FIGURE 3.1 Configure service application associations.

The second step to highlight is Reporting Services configuration, as shown in Figure 3.2.

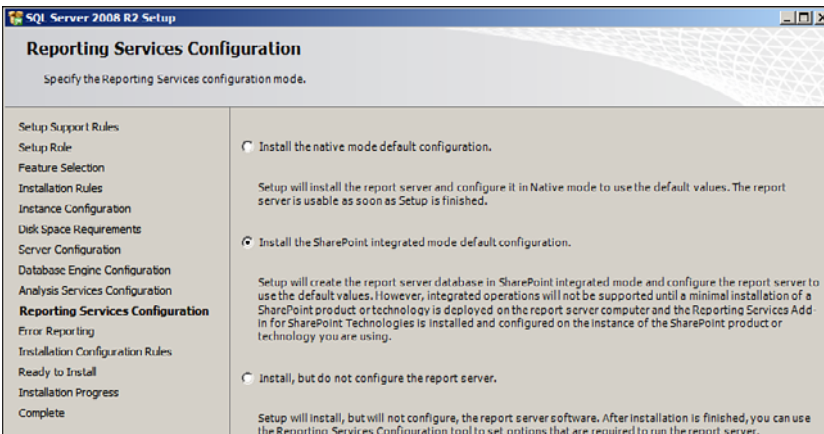


FIGURE 3.2 Reporting Services configuration.

Choose **Install the SharePoint Integrated Mode Default Configuration**. This creates the Reporting Services database in SharePoint Integrated mode. There are some scenarios where the integrated mode default configuration option may not be available; for example you have to install both the database engine and Reporting Services. If the option is not available then the alternative is to choose **Install, but do not configure the Report Server** and then use the Reporting Services Configuration Manager to create a new Reporting Services database in SharePoint Integrated mode.

Installing the Reporting Services Add-In for SharePoint

In addition to getting Reporting Services set up and configured for SharePoint Integrated mode, the Reporting Services Add-In for SharePoint needs to be installed and configured. The add-in is a SharePoint Feature that provides the infrastructure to seamlessly integrate Reporting Services within SharePoint. Beginning with SharePoint 2010, the Reporting Services Add-In for SharePoint is included in the software prerequisites for SharePoint, as shown in Figure 3.3.

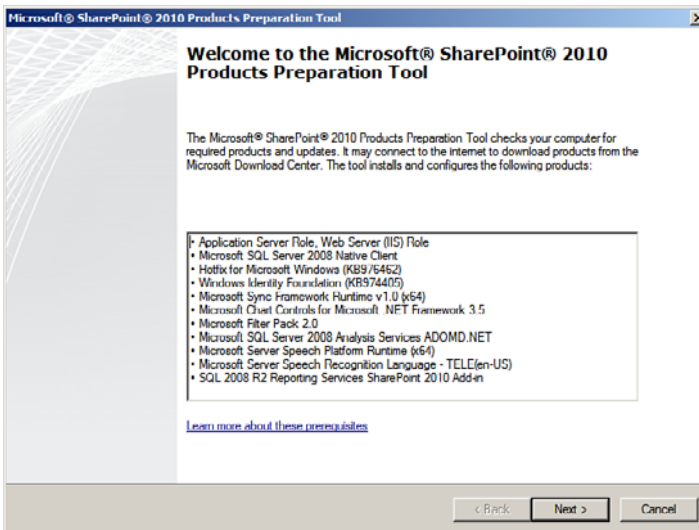


FIGURE 3.3 Microsoft SharePoint 2010 Products Preparation tool.

You can install any of the necessary software prerequisites by selecting **Install Software Prerequisites** from the SharePoint 2010 setup. The Reporting Services Add-In for SharePoint is also available as a separate download from the Microsoft website. (Just search for SQL Server 2008 R2 Feature Pack). Note that the version of the Reporting Services Add-In for SharePoint is based on both the version of SQL Server and the version of SharePoint. There are versions of the add-in for SQL Server 2005, SQL Server 2008, and SQL Server 2008 R2, and versions for SharePoint 2007 and SharePoint 2010.

After installing the Reporting Services Add-In for SharePoint, you see the Report Server Integration Feature in the Site Collection Features gallery.

TIP

To view the Site Collection Feature gallery, navigate to the root site in a site collection and click Site Actions, Site Settings, and Site collection features (in the Site Collection Administration section).

Configuring the Reporting Services Add-In for SharePoint Integration

After getting Reporting Services set up for SharePoint Integration and installing the Reporting Services Add-In for SharePoint, the next step is to configure the Reporting Services SharePoint Integration in SharePoint Central Administration. To do so follow these steps:

1. Launch SharePoint Central Administration from the Start menu. (It should be pinned to the Start menu; if not, select it from the All Programs, Microsoft SharePoint 2010 program group.) The SharePoint Central Administration home page is displayed, as shown in Figure 3.4.



FIGURE 3.4 SharePoint Central Administration.

2. Click **General Application Settings** to display that page, as shown in Figure 3.5.
3. Click **Reporting Services Integration** and fill in the form, as shown in Figure 3.6

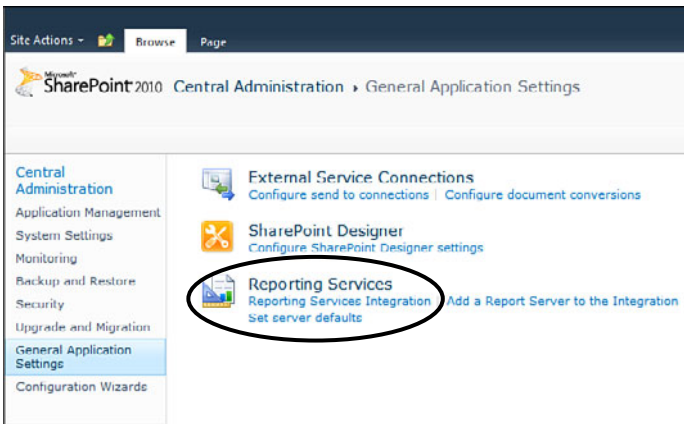


FIGURE 3.5 SharePoint Central Administration General Application Settings.

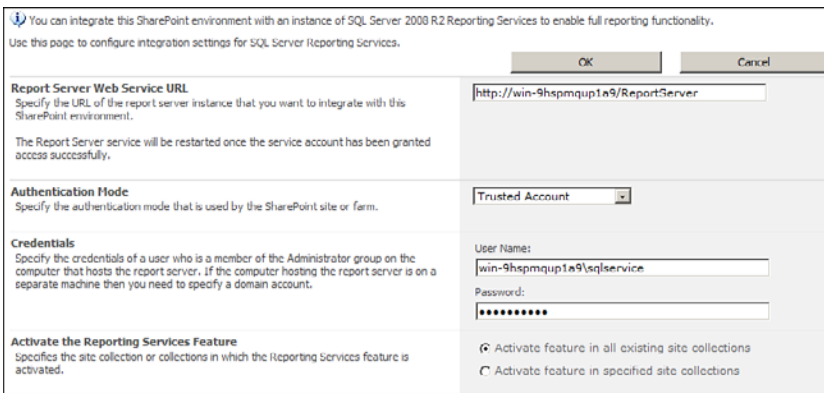


FIGURE 3.6 Reporting Services Integration in SharePoint Central Administration.

The following are the main points about the entries on the form:

- ▶ You can find the Report Server Web Service URL by opening the Reporting Services Configuration Manager and navigating to the Web Service URL page, as shown in Figure 3.7.

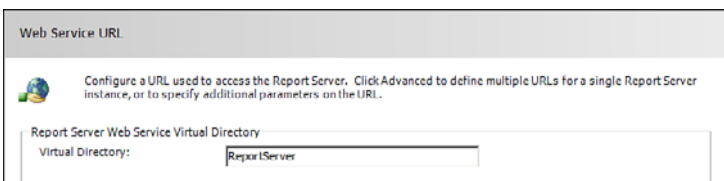


FIGURE 3.7 Reporting Services Configuration Web Service URL page.

- ▶ Choose **Windows Authentication for Authentication Mode** if Kerberos is configured; otherwise, choose **Trusted Account**.
- ▶ Enter a domain account for the credentials; this account must be in the Administrators group on the server where Reporting Services is installed.
- ▶ Specify to activate the Reporting Services feature for all existing site collections or specific ones as appropriate. As a general rule, it is a good idea to choose all existing site collections.

After you enter the required information and click **OK**, the Reporting Services Integration Summary is displayed, as shown in Figure 3.8.

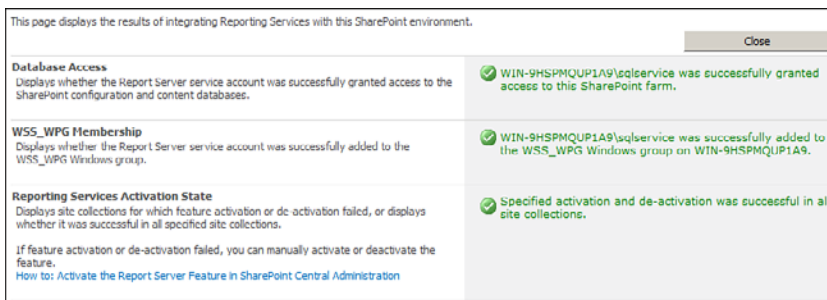


FIGURE 3.8 Reporting Services Integration Summary.

At this point, the configuration of Reporting Services in SharePoint Integrated mode is complete.

Adding Content Types to a Document Library

A Content Type in SharePoint is a collection of settings that describe a piece of content such as a document, task, contact, report, and so on. If you set up Reporting Services in SharePoint Integrated mode, you can then store reports, report models, and shared data sources in SharePoint document libraries. For a given document library, the appropriate content types for these artifacts must be added and the New Document menu customized to specify the types of documents that can be created when the New Document button is clicked. Follow these steps to add the appropriate Reporting Services content types to a document library and customize the New Document menu:

1. Navigate to (or create) a document library and click the **Library** tab, as shown in Figure 3.9. (The Library tab is underneath Library Tools.)
2. Click **Library Settings** on the ribbon to display the Library Settings page, as shown in Figure 3.10.
3. Click **Advanced Settings** to display the Advanced Settings page, as shown in Figure 3.11. (Only the relevant portion of the page is shown.)

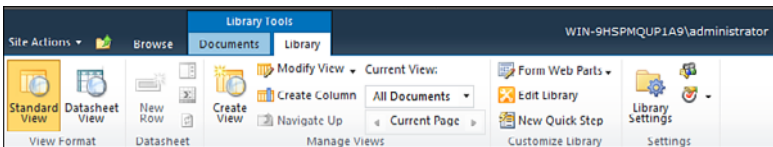


FIGURE 3.9 Document library.

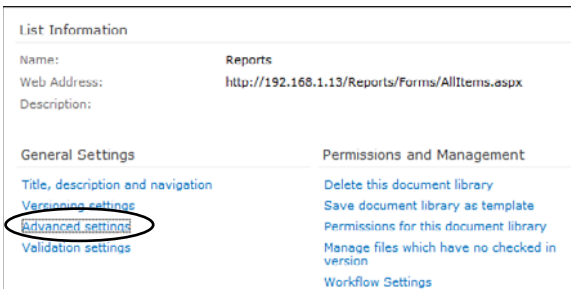


FIGURE 3.10 Document library settings page.

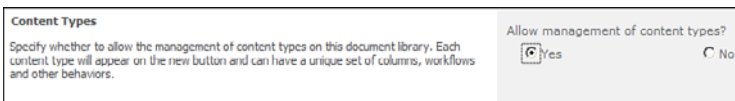


FIGURE 3.11 Document library advanced settings page.

4. Click **Yes** to allow management of content types (that is, to allow multiple content types in this document library).
5. Click **OK** to return to the Library Settings page. Navigate to the Content Types, as shown in Figure 3.12.

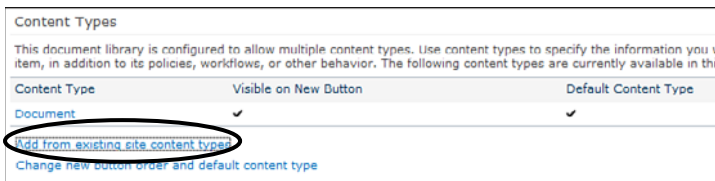


FIGURE 3.12 Document library content types.

6. Click **Add from Existing Content Types** to display the Select Site Content Types from, as shown in Figure 3.13.
7. Select the **Report Builder Model**, **Report Builder Report**, and **Report Data Source**, as shown in Figure 3.13, and then click **Add**.

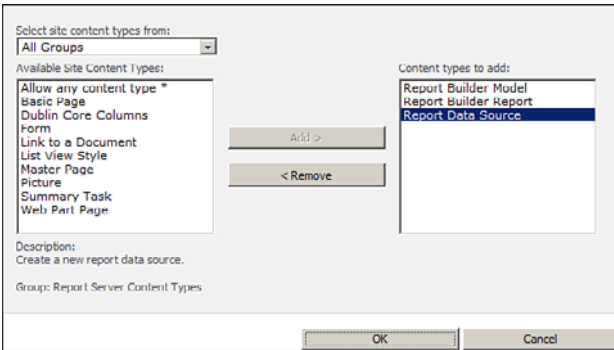


FIGURE 3.13 Add content types.

8. Click **OK** to return to the library settings page.
9. Navigate again to the Content Types and click **Change New Button Order** and **Default Content Type**, as shown in Figure 3.14.

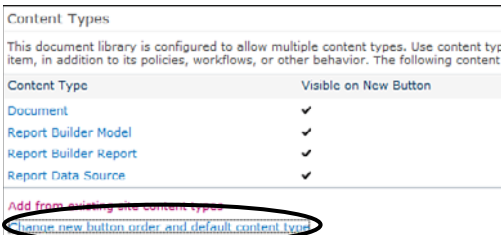


FIGURE 3.14 The new button order and default content type.

10. The Content Type Order form is displayed, as shown in Figure 3.15. Edit the Content Type Order, as shown in Figure 3.15.

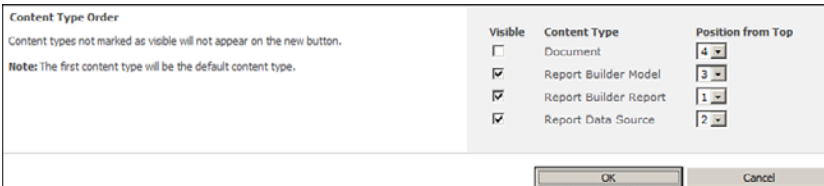


FIGURE 3.15 Content type order.

11. Click **OK** to return to the library settings page, and then navigate back to the home page for the document library (refer to Figure 3.9, earlier in this chapter).

12. Click the **Documents** tab underneath Library Tools.
13. Click **New Document** to display the drop-down menu, as shown in Figure 3.16.

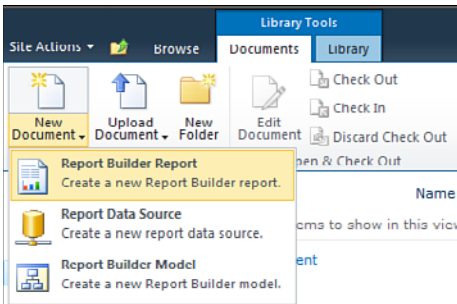


FIGURE 3.16 New Document drop-down menu.

The drop-down menu shows Report Builder Report, Report Data Source, and Report Builder Model choices. Selecting Report Builder Report launches Report Builder, a user-friendly tool used to design a report. This completes the setup and configuration of Reporting Services in SharePoint Integrated mode. The steps required to create a data source and a report are covered in the End-to-End Solutions chapter later in the book.

Summary

The setup and configuration of Reporting Services in SharePoint Integrated mode is a somewhat tedious process, but the advantages are many, and the integration is seamless. Business users get the benefit of being able to do everything in SharePoint without having to resort to the Report Manager web application. Report security leverages SharePoint, which also reduces complexity.

Best Practices

The following are best practices from this chapter:

- ▶ Choose the **SQL Server Feature Installation** option on the Setup Role step in SQL Server setup. This creates the Reporting Services database in SharePoint Integrated mode and makes it ready for the SharePoint configuration.
- ▶ Run **Install Software Prerequisites** for SharePoint to install the Reporting Services add-in for SharePoint (rather than downloading it).
- ▶ Add the Report Builder Report, Report Data Source, and Report Builder Model content types to any document library that will store reports. Customize the New Document menu to show these content types as choices.

- ▶ Choose Windows Authentication for Authentication Mode if Kerberos is configured, otherwise choose Trusted Account.
- ▶ Use a domain account that is a member of the Administrators group on the server where Reporting Services is installed.
- ▶ Activate the Reporting Services Feature for all existing site collections. If you choose not to do this, you can selectively activate the feature in the appropriate site collections.

INDEX

A

- actions, availability of, 294-295
- Actions section (PowerPivot Management Dashboard), 183
- Add Measure Filters screen, 114
- Add Subscriptions page, 65-66
- Add Trusted Content Location link, 97
- Add Trusted Data Source Location link, 96
- add-ins, Reporting Services Add-In for SharePoint, 39-42, 283-285
- Alert Me function, 53
- Allow External Data Using REST option (Excel Services), 25
- Analysis Services data connections, 102-104, 251
- Analysis Services template, 102
- Analytic Chart reports, 117-119, 260
- Analytic Grid report, 119-121
- analyzing PowerPivot traces, 300
- Application Settings (PerformancePoint Services), 91-92

B

- banding methods, 111
- BI (business intelligence) tools, 1
- BI End to End Solution dashboard
 - building and deploying, 263
 - interacting with, 266-268
- BIDS, deploying reports from, 47-51
- Blank Drawing template, 198

Blank KPIs (key performance indicators), creating, 110-113

blogs, RDA BI/SQL Server Practice Group Blog, 3

browsing Visio web drawings, 213-214

Business Intelligence Center, 3-7

choosing BI tools, 8

creating with Business Intelligence Center template, 9-10

reviewing, 9-13

server prerequisites and licensing considerations, 7-8

site collection, creating, 235-236

subsites, creating with Business Intelligence Center site template, 13-14

C

cache, workbook cache, 21

Cache setting (PerformancePoint Services), 92

Caching of Unused Files setting (Excel Services), 21

calculated fields, adding to PowerPivot for Excel, 160

calculation behavior, configuring in Excel Services, 23-25

Calendar Year custom list, 271-276

Central Administration

PerformancePoint Services, adding, 89-90

Reporting Services integration, 40-42

trusted content locations, configuring, 97

trusted data source locations, configuring, 96

Check Out function, 53

Choice Filter, 78

choosing BI (business intelligence) tools, 8

Closer to Target Is Better scoring pattern, 111

Comments setting (PerformancePoint Services), 92

Company Returns Objective KPI, 258

Company Sales Objective KPI,

Configure Connection dialog, 79-80, 218

Configure Service Application Associations menu, 90

configuring

Excel Services, 17-18

calculation behavior, 23-25

external data, 21-22

load balancing, 19-20

memory utilization, 20-21

security, 19

session management, 20

trusted data connection libraries, 26-27

trusted data providers, 25-26

trusted file locations, 22-23

user-defined functions, 27-28

workbook cache, 21

workbook properties, 23

PerformancePoint Services, 84-89, 239, 287-288

application settings, 91-92

enabling non-Business Intelligence Center sites, 92-95

Secure Store Service, 90-91

trusted content locations, 97

trusted data source locations, 96

Report Viewer web part, 71-75

Reporting Services, 40-42, 239

Secure Store Service, 287-288

Visio Graphics Service

global settings, 189-190

trusted data providers, 191-193, 224-225

Connection Encryption setting (Excel Services), 19

connections (Report Viewer web part), 77-81

Content Types, adding to document libraries, 42-45

Continents custom list, 276-277
ContosoRetailDW database, downloading, 198
ContosoSalesByChannel.vdw drawing
 developing, 198-211
 embedding into SharePoint page with Visio
 Web Access web part, 214-217
Create Connection menu, 130-131
Create Group button, 145
Create Relationship dialog, 159
Create Site Collections link, 9
cube actions, availability of, 294-295
Current User Filter, 78
custom data providers, 220
Custom Table filter, 127
customizing navigation, 237-239

D

Dashboard Designer, 99-102
 objects, 101-102
 opening, 100
 redirecting to from content list, 100
Dashboard Page Template screen, 127
dashboards
 BI End to End Solution
 building and deploying, 263
 interacting with, 266-268
 connecting filters to dashboard content
 objects, 130
 creating, 127-130, 271
 dashboard connection formula, 289-292
 deployed BI solution, 239-240
 deploying to SharePoint, 135
 insufficient security for dashboard deploy-
 ment, troubleshooting, 293-294
 multiple pages in, 134
 PowerPivot Management Dashboard,
 183-184

data, importing into PowerPivot for Excel,
152-154
 from database, 154-157
 from flat file, 157
data connection libraries, creating, 92-95
Data Connection Wizard, 201-204
data connections
 Analysis Services data connections,
 102-104, 251
 Excel Services data connections, 104-105
 Import from Excel Workbook data connec-
 tions, 106-107
 SharePoint List data connections, 107-108
 SQL Server Table data connections,
 108-109
**Data Connections category (Dashboard
 Designer), 101**
data exposure, controlling, 181-182
data filtering. See filters
data providers
 custom data providers, 220
 data provider not found error message, 306
 trusted data providers. See trusted data
 providers
 untrusted data provider requests, 306
data refresh options
 for PowerPivot for SharePoint, 179-180
 for reports, 58-59
 for Visio Graphics Service, 214, 305-306
**Data Refresh section (PowerPivot Management
 Dashboard), 183**
data sources, 60-62
 creating, 241-242
 delegating, 141-144, 226-229
 trusted data source locations, 96
 Visio Graphics Service
 external data sources, 224
 internal data sources, 223-224

Data Sources setting (PerformancePoint Services), 92

database not found error message, 306

databases

- ContosoRetailDW database, down-loading, 198
- database not found error message, 306
- exporting data into PowerPivot for Excel, 154-157

DataConnections Library for PerformancePoint option, 92

data-driven subscriptions, 67

datasets

- creating, 241-245
- shared datasets, 62-64, 281

Date Filter, 78

Decomposition Tree, 92, 137-138

Decreasing Is Better scoring pattern, 111

delegating data sources, 141-144, 226-229

Delete Item function, 53

Delivery Options page, 67-69

deploying

- BI End to End Solution dashboard, 263
- dashboards, 135
- reports, 48
 - from BIDS, 49-51
 - to document library, 48
 - from Report Builder, 51-53

development with PerformancePoint Services. See PerformancePoint Services

disabling PowerPivot tracing, 299

displaying Getting Started dialog, 282-283

document libraries. See libraries

downloading ContosoRetailDW database, 198

drilling with Decomposition Tree, 137-138

E

ECS (Excel Calculation Services), stopping, 175

Edit Items function, 53

Edit Trusted Content Location screen, 97-98

Edit Trusted Data Source Location screen, 96-97

editing shared datasets, 63

embedding Visio web drawings into SharePoint pages, 214-217

enabling

- Decomposition Tree, 137-138
- non-Business Intelligence Center sites, 92-95
- PowerPivot tracing, 298-299
- Report Builder, 283
- Report Server Integration, 285

error messages. See troubleshooting

Event ID errors. See Visio Graphics Service, troubleshooting

Excel Calculation Services (ECS), stopping, 175

Excel Service Authentication Settings window, 230

Excel Services, 13-17

- configuring, 17-18
 - calculation behavior, 23-25
 - external data, 21-22
 - load balancing, 19-20
 - memory utilization, 20-21
 - security, 19
 - session management, 20
 - trusted data connection libraries, 26-27
 - trusted data providers, 25-26
 - trusted file locations, 22-23
 - user-defined functions, 27-28
 - workbook cache, 21
 - workbook properties, 23
- data connections, 104-105

Excel Services template, 104

Excel Web Access web part, 31-32

integrating with Visio Graphics Service, 268-271

- deployed solution, 271
- Visio web drawing, creating with Microsoft Visio 2010 Premium Edition, 271-277

libraries, creating for workbooks, 28-29

PowerPivot. *See* PowerPivot for Excel

reports, 123

workbooks

- accessing from libraries, 31
- adding to libraries, 29-30

Excel Web Access warning, 302

Excel Web Access web part, 31-32

External Data Cache Lifetime setting (Excel Services), 25

external data, configuring in Excel Services, 21-22

External Data setting (Visio Graphics Service), 190

external data sources (Visio Graphics Service), 224

F

Farm Configuration Wizard, 187-188

fields

- calculated fields, adding to PowerPivot for Excel, 160
- unwanted fields, hiding, 161

file loading errors, 306

files

- file loading errors, 306
- ODC files, publishing, 229-231

Filter Actions, 78

filters, 126

- connecting to dashboard content objects, 130

creating, 262

Custom Table, 127

filter web parts, 77-79

MDX Query, 127

Member Selection, 127

Named Set, 127

Time Intelligence, 110, 127

Time Intelligence Connection, 127

Filters setting (PerformancePoint Services), 92

flat files, exporting into PowerPivot for Excel, 157

functions

- built-in SharePoint functions, 53-54

- volatile functions, 23

G

Generate New Key menu, 91

Get Filter Results From connection action, 220

Get Shape to View From connection action, 220

Get Shapes to Highlight From connection action, 218

Get Web Drawing URL and Page Name From connection action, 220

Getting Started dialog, 245, 282-283

Global Settings

- Excel Services, 18

- External Data settings, 21-22

- Load Balancing settings, 19-20

- Memory Utilization settings, 20-21

- Security settings, 19

- Workbook Cache settings, 20, 21

- Visio Graphics Service, 189-190

graphics. *See* Visio Graphics Service

groups, site groups, 145

H-I

- hiding fields in PowerPivot for Excel, 161
- hierarchies (PowerPivot), 302
- Import from Excel Workbook data connections, 106-107
- Import from Excel Workbook template, 106
- importing into PowerPivot for Excel, 152-154
 - from database, 154-157
 - from flat file, 157
- Increasing Is Better scoring pattern, 111
- Infrastructure - Server Health section (PowerPivot Management Dashboard), 183
- installing
 - PowerPivot for Excel, 152, 302
 - PowerPivot for SharePoint, 168
 - multiserver farm install, 171-175
 - single-server install, 169-171
 - Reporting Services, 38-40
- internal data sources (Visio Graphics Service), 223-224
- invalid endpoints, troubleshooting, 306

J-K

- Kerberos, 175
- key performance indicators. *See* KPIs (key performance indicators)
- KPI Details reports
 - creating, 122-123
 - linking to scorecards, 133-134
- KPIs (key performance indicators), 109
 - Blank KPIs, creating, 110-113
 - creating, 252-258
 - KPI Details reports
 - creating, 122-123
 - linking to scorecards, 133-134
 - Objectives, 111

L

- libraries
 - accessing workbooks from, 31
 - adding Content Types to, 42-45
 - adding workbooks to, 29-30
 - creating for Excel workbooks, 28-29
 - data connection libraries, 92-95
 - Library Settings page, 54
 - publishing Visio web drawings to, 211-213
 - trusted data connection libraries, 26-27
 - uploading reports to, 47
- Library Settings page, 42-43, 54
- licensing, 7-8
- load balancing, configuring in Excel Services, 19-20
- loading VertiPaq engine, 298-299
- Local option (ECS Load Balancing), 20
- locations
 - nontrusted content location, 292-293
 - trusted content locations, 97
 - trusted data source locations, 96
- logs, ULS (Unified Logging Service) logs, 300-301

M

- Manage Copies function, 53
- Manage Permissions function, 53
- Manage Report Parameters page, 64-65
- Manage Shared Datasets page, 63
- management dashboards, 231-235
- Maximum Cache Agesetting (Visio Graphics Service), 189
- Maximum Concurrent Queries per Session setting (Excel Services), 25

Maximum Private Bytes setting (ECS Memory Utilization), 20

Maximum Recalc Duration setting (Visio Graphics Service), 190

Maximum Request Duration setting (Excel Services), 22-23

Maximum Size of Workbook Cache setting (Excel Services), 21

Maximum Unused Object Age setting (ECS Memory Utilization), 21

Maximum Web Drawing Size setting (Visio Graphics Service), 189

MDX Query filter, 127

MDX tuple formulas, 111

Member Selection filter, 127

memory, configuring in Excel Services, 20-21

Memory Cache Threshold setting (ECS Memory Utilization), 20-21

Microsoft BI website, 3

Microsoft Office Developer Center, 3

Microsoft scorecard templates, 114

Microsoft SharePoint 2010 website, 3

Minimum Cache Agesetting (Visio Graphics Service), 189

monitoring PowerPivot for SharePoint, 182

multiple pages, creating in dashboards, 134

multiserver farm install (PowerPivot for SharePoint), 171-175

N

Named Set filter, 127

native mode web parts, 81-85

navigation, customizing, 237-239

non-Business Intelligence Center sites, enabling with PerformancePoint Services, 92-95

nontrusted content location, 292-293

O

Objectives, creating, 111

ODC files, publishing, 229-231

office data connectivity files. *See* ODC files

opening Dashboard Designer, 100

P

Page Field Filter, 78

parameters (report), 64-65

PerformancePoint Content category (Dashboard Designer), 101-102

PerformancePoint Services, 84-89, 97-99, 250-251, 261

- adding, 89-90
- application settings, 91-92
- configuring, 239
- connecting to Reporting Services reports, 261
- Dashboard Designer, 99-102
 - objects, 101-102
 - opening, 100
 - redirecting to from content list, 100
- dashboards
 - building, 263
 - connecting filters to dashboard content objects, 130
 - creating, 127-130
 - deploying to SharePoint, 135
 - interacting with, 266-268
 - linking KPI Details reports to scorecards, 133-134
 - multiple pages in, 134
- data connection libraries, creating, 92-95
- data connections
 - Analysis Services data connections, 102-104, 251

- Excel Services data connections, 104-105
- Import from Excel Workbook data connections, 106-107
- SharePoint List data connections, 107-108
- SQL Server Table data connections, 108-109
- Decomposition Tree, enabling, 137-138
- filters, 126
 - connecting to dashboard content objects, 130
 - creating, 262
- Custom Table, 127
- MDX Query, 127
- Member Selection, 127
- Named Set, 127
- Time Intelligence, 127
- Time Intelligence Connection, 127
- KPIs (key performance indicators), 109
 - Blank KPIs, 110-113
 - creating, 252-258
 - Objectives, 111
- non-Business Intelligence Center sites, enabling, 92-95
- reports, 117
 - Analytic Chart, 117-119
 - analytic chart reports, 260
 - Analytic Grid, 119-121
 - Excel Services, 123
 - KPI Details, 122-123, 133-134
 - ProClarity Analytics Server Page, 123
 - Reporting Services, 123
 - Strategy Map, 121-122
 - Web Page, 126
- scorecards
 - creating, 114-117, 258-259
 - defined, 111
- Secure Store Service, configuring, 90-91
- security, 137-141
 - data source delegation, 141-144
 - SharePoint permissions, 144-145
- troubleshooting, 286-287
 - configuration, 287-288
 - cube action not available, 294-295
 - dashboard connection formula, 289-292
 - insufficient security for dashboard deployment, 293-294
 - nontrusted content location, 292-293
 - trusted content locations, configuring, 97
 - trusted data source locations, configuring, 96
- permissions (PerformancePoint Services), 144-145**
- PivotTables, creating in PowerPivot for Excel, 162**
- planning Business Intelligence Center, 7-8**
- PowerPivot for Excel**
 - calculated fields, adding, 160
 - importing data into, 154-155
 - importing from database, 154-157
 - importing from flat file, 157
 - installing, 152
 - overview, 145-154
 - PivotTables, creating, 162
 - relationships, creating between tables, 159
 - troubleshooting, 297-303
 - analyzing traces, 300
 - disabling tracing, 299
 - enabling tracing, 298-299
 - Excel Web Access warning, 302
 - hierarchies, 302
 - installation, 302
 - relationships, 302
 - SharePoint list data, 302
 - user credential delegation errors, 302-303
 - unwanted fields, hiding, 161

PowerPivot for SharePoint

- data exposure, controlling, 181-182
- data refresh options, 179-180
- hardware and software requirements, 168
- installing, 168
 - multiserver farm install, 171-175
 - single-server install, 169-171
- monitoring, 182
- overview, 162-168
- PowerPivot Gallery, 175-177
- PowerPivot Management Dashboard, 183-184
- snapshots, 179-180
- spreadmarts, 181-182
- troubleshooting, 300-301
 - Excel Web Access warning, 302
 - hierarchies, 302
 - installation, 302
 - relationships, 302
 - SharePoint list data, 302
 - user credential delegation errors, 302-303
- workbooks, publishing, 180-181
- PowerPivot Gallery, 175-177**
- PowerPivot Management Dashboard, 183-184**
- PowerShell, configuring Visio Graphics Service with, 190**
- processing**
 - data refresh options, 58-59
 - data snapshot options, 59
 - processing timeout, 59
 - reports, 58-59
- ProClarity Analytics Server Page reports, 123**
- properties**
 - report project properties, 51
 - Report Viewer web part properties, 75-77
 - workbook properties, configuring in Excel Services, 23
- proxy initiation failure, troubleshooting, 306**

publishing

- ODC files, 229-231
- Visio web drawings, 211-213
- workbooks with PowerPivot for SharePoint, 180-181

Q-R**Query String (URL) Filter, 78****RDA BI/SQL Server Practice Group Blog, 3****redirecting to Dashboard Designer from content list, 100****refresh options. See data refresh options****relationships**

- creating between tables, 159
- in PowerPivot, 302

Report Builder, 45

- creating reports with, 240-250
- deploying reports from, 51-53
- enabling, 283

Report Explorer web part, 81-85**Report Library template, 28-29****Report Server Integration, enabling, 285****Report Viewer web part, 81-85**

- configuring, 71-75
- connections, 77-81
- native mode web parts, 81-85
- properties, 75-77

Reporting Services, 32-38, 283-285. See also reports

- configuring, 239
- connecting to, 261
- Content Types, adding to document libraries, 42-45
- installing, 38-39
- Report Builder, enabling, 283

- Reporting Services Add-In for SharePoint
 - configuring, 40-42
 - installing, 39-40
 - troubleshooting, 283-285
 - SharePoint integration, 40-42
 - troubleshooting, 277-281
 - Getting Started dialog, 282-283
 - report artifacts, 285
 - Report Builder, 283
 - report project settings, 286
 - Report Server Integration, 285
 - Reporting Services add-in, 283-285
 - shared datasets, 281
 - web parts. See web parts
 - reports, 45-47, 117**
 - Analytic Chart, 117-119, 260
 - Analytic Grid, 119-121
 - built-in SharePoint functions, 53-54
 - creating with Report Builder 3.0, 240-250
 - data sources, 60-62, 241-242
 - datasets, 241-245
 - deploying, 47
 - from BIDS, 47-51
 - from Report Builder, 51-53
 - uploading to document library, 47
 - Excel Services, 123
 - KPI Details
 - creating, 122-123
 - linking to scorecards, 133-134
 - parameters, 64-65
 - processing options, 58-59
 - data refresh options, 58-59
 - data snapshot options, 59
 - processing timeout, 59
 - ProClarity Analytics Server Page, 123
 - report artifacts, 285
 - report project settings, 286
 - Reporting Services. See Reporting Services
 - shared datasets, 62-64
 - shared schedules, 55-58
 - sparklines, 249-250
 - Strategy Map, 121-122
 - subscriptions, 65-69
 - data-driven subscriptions, 67
 - delivery options, 67-69
 - Web Page, 126
 - Reports section (PowerPivot Management Dashboard), 184**
 - repositories, Visio Process Repository site template, 191-195**
 - Return Amount KPI, 252**
 - Return Quantity KPI, 252**
 - reviewing Business Intelligence Center, 9-13**
 - Round Robin with Health Check option (ECS Load Balancing), 20**
- ## S
- Sales Amount KPI, 252**
 - Sales Quantity KPI, 252**
 - schedules, shared, 55-58**
 - scorecards**
 - creating, 114-117, 258-259
 - defined, 111
 - linking KPI Details reports to, 133-134
 - Scoring Patterns, 111**
 - Secure Store Application Secure Store Service menu, 91**
 - Secure Store Service**
 - configuring for PerformancePoint Services, 90-91, 287-288
 - configuring for Visio Graphics Service, 226-229
 - publishing ODC files to SharePoint 2010, 229-231

security

- Excel Services, 19
- insufficient security for dashboard deployment, troubleshooting, 293-294
- PerformancePoint Services, 137-141
 - data source delegation, 141-144
 - SharePoint permissions, 144-145
- Visio Graphics Service, 220-223
 - external data sources, 224
 - internal data sources, 223-224

Select a Scorecard Template screen, 114**Select an Item dialog, 72****Select Measure Control setting (PerformancePoint Services), 92****Send Shape Data To connection action, 220****services**

- Excel Services. See Excel Services
- PerformancePoint Services. See PerformancePoint Services
- Reporting Services, 32-38
 - configuring, 239
 - installing, 38-39
 - Reporting Services Add-In for SharePoint, 39-42
 - SharePoint integration, 40-42
- Secure Store Service, 288
- Usage and Health Data Collection, 182
- Visio Graphics Service. See Visio Graphics Service

session management (Excel Services), 20**Session Timeout setting (Excel Services), 22****shared datasets, 62-64, 281****shared schedules, 55-58****SharePoint Central Administration**

- PerformancePoint Services, adding, 89-90
- Reporting Services integration, configuring, 40-42

- trusted content locations, configuring, 97
- trusted data source locations, configuring, 96

SharePoint List data connections, 107-108**SharePoint list data, in PowerPivot, 302****SharePoint List Filter, 78****SharePoint List template, 107****SharePoint Unified Logging Service (ULS) logs, 300-301****Show Details setting (PerformancePoint Services), 92****Silverlight, 175****single-server install (PowerPivot for SharePoint), 169-171****site collection, 92-94, 235-236****site groups, 145****Site Settings page, 55-57****site templates. See templates****sites, enabling with PerformancePoint Services, 92-95****snapshots**

- PowerPivot for SharePoint, 179-180
- reports, 59

sparklines, 249-250**spreadmarts, 181-182****SQL Server Analysis Services (SSAS)**

- data sources, delegating, 142
- Filter, 78

SQL Server Table data connections, 108-109**SQL Server Table template, 108****SSAS (SQL Server Analysis Services)**

- data sources, delegating, 142
- Filter, 78

Standard scorecard templates, 114**Stop When Refresh on Open Fails setting (Excel Services), 24-25****stopping Excel Calculation Services (ECS), 175****Strategy Map reports, 121-122**

subscriptions (reports), 65-69

data-driven subscriptions, 67

delivery options, 67-69

subsites, creating with Business Intelligence Center template, 13-14**T****Table or Matrix Wizard, 245****tables**

PivotTables. See PivotTables

relationships, creating, 159

Tabular scorecard templates, 114**TargetDatasetFolder property, 51****TargetDataSourceFolder property, 51****TargetReportFolder property, 51****TargetReportPartFolder property, 51****TargetServerURL property, 51, 286****templates**

Analysis Services, 102

Blank Drawing template, 198

Business Intelligence Center site template,
13-14

Excel Services, 104

Import from Excel Workbook, 106

Report Library, 28-29

SharePoint List, 107

SQL Server Table, 108

Visio Process Repository site template,
191-195**Time Intelligence Connection filter, 127****Time Intelligence filter, 110, 127****Time Member Associations menu, 102****Time tab (Analysis Services), 102-103****timeouts (report processing), 59****tracing (PowerPivot)**

disabling, 299

enabling, 298-299

troubleshooting

PerformancePoint Services, 286-287

configuration, 287-288

cube action not available, 294-295

dashboard connection formula, 289-292

insufficient security for dashboard
deployment, 293-294

nontrusted content location, 292-293

PowerPivot, 295-297

analyzing traces, 300

disabling tracing, 299

enabling tracing, 298-299

Excel Web Access warning, 302

hierarchies, 302

installation, 302

PowerPivot for Excel, 297-300

PowerPivot for SharePoint, 300-301

relationships, 302

SharePoint list data, 302

user credential delegation errors,
302-303

Reporting Services, 277-281

Getting Started dialog, 282-283

report artifacts, 285

Report Builder, 283

report project settings, 286

Report Server Integration, 285

Reporting Services add-in, 283-285

shared datasets, 281

Visio Graphics Service, 303-305

data provider not found, 306

data refresh failure, 305-306

database not found, 306

failure to generate diagram, 306

file loading errors, 306

- invalid endpoint, 306
- proxy initiation failure, 306
- untrusted data provider request, 306

trusted content locations, configuring, 97

trusted data connection libraries, configuring in Excel Services, 26-27

trusted data providers

- Excel Services, 25-26
- Visio Graphics Service
 - adding, 224-225
 - list of, 191-193

trusted data source locations, configuring, 96

Trusted Data Source Locations link, 96

trusted file locations, configuring in Excel Services, 22-23

U

ULS (Unified Logging Service) logs, 300-301

untrusted data provider requests, 306

unwanted fields, hiding, 161

Upload Document dialog, 30, 47-49

uploading reports to document library, 47

Usage and Health Data Collection, 182

user credential delegation errors, troubleshooting, 302-303

user-defined functions, configuring in Excel Services, 27-28

V

VDW files. See Visio web drawings

Version History function, 53

VertiPaq engine, loading, 298-299

Visio Graphics Service, 184-187, 194-197
 adding, 187-188

custom data providers, 220

global settings, 189-190

integrating with Excel Services, 268-271

deployed solution, 271

Visio web drawing, creating with Microsoft Visio 2010 Premium Edition, 271-277

prerequisites, 197-198

publishing ODC files to SharePoint 2010, 229-231

security, 220-223

data source delegation, 226-229

external data sources, 224

internal data sources, 223-224

Secure Store Service, 226-229

troubleshooting, 305

data provider not found, 306

data refresh failure, 305-306

database not found, 306

failure to generate diagram, 306

file loading errors, 306

invalid endpoint, 306

proxy initiation failure, 306

untrusted data provider request, 306

trusted data providers

adding, 224-225

list of, 191-193

Visio Process Repository site template, 191-195

Visio Web Access web part

embedding drawings with, 214-217

interaction with other SharePoint 2010 applications, 218-220

Visio web drawings

browsing, 213-214

creating with Microsoft Visio Premium Edition, 271-277

developing, 198-211

- embedding into SharePoint page with Visio Web Access web part, 214-217
- publishing to document library, 211-213
- refreshing data in, 214

Visio Process Repository site template, 191-195

Visio Web Access web part

- embedding drawings with, 214-217
- interaction with other SharePoint 2010 applications, 218-220

Volatile Function Cache Lifetime setting (Excel Services), 23

volatile functions, 23

W-X-Y-Z

Warn on Refresh option (Excel Services), 24

web drawings (Visio)

- browsing, 213-214
- creating with Microsoft Visio Premium Edition, 271-277
- developing, 198-211
- embedding into SharePoint page with Visio Web Access web part, 214-217
- publishing to document library, 211-213
- refreshing data in, 214

Web File Properties window, 230-231

Web Page reports, 126

web parts, 69-71

- Excel Web Access, 31-32
- filter web parts, 77-79
- Report Explorer, native mode web parts, 81-85
- Report Viewer, 71-75
 - configuring, 71-75
 - connections, 77-81
 - native mode web parts, 81-85
 - properties, 75-77

- Visio Graphics Service, interaction with other SharePoint 2010 applications, 218-220

- Visio Web Access web part, embedding drawings with, 214-217

websites

- Microsoft BI website, 3
- Microsoft Office Developer Center, 3
- Microsoft SharePoint 2010 website, 3

Windows PowerShell, configuring Visio Graphics Service with, 190

wizards

- Data Connection Wizard, 201-204
- Farm Configuration Wizard, 187-188
- Table or Matrix Wizard, 245

Workbook Activity section (PowerPivot Management Dashboard), 183

workbook cache, configuring in Excel Services, 21

Workbook Cache Location setting (Excel Services), 21

Workbook Calculation Mode (Excel Services), 23-24

Workbook URL option (ECS Load Balancing), 20

workbooks

- accessing from libraries, 31
- adding to libraries, 29-30
- creating libraries for, 28-29
- properties, 23
- publishing in PowerPivot for SharePoint, 180-181