

Joe Habraken

24 Proven One-hour Lessons

Sams **Teach Yourself**

Windows Server® 2008

in **24**
Hours

SAMS



Sams Teach Yourself Windows Server® 2008 in 24 Hours

Copyright © 2008 by Sams Publishing

All rights reserved. No part of this book shall be reproduced, stored in a retrieval system, or transmitted by any means, electronic, mechanical, photocopying, recording, or otherwise, without written permission from the publisher. No patent liability is assumed with respect to the use of the information contained herein. Although every precaution has been taken in the preparation of this book, the publisher and author assume no responsibility for errors or omissions. Nor is any liability assumed for damages resulting from the use of the information contained herein.

ISBN-13: 978-0-67232-3012-4

ISBN-10: 0-672-33012-1

Library of Congress Cataloging-in-Publication Data:

Habraken, Joseph W., 1954-

Sams teach yourself Windows server 2008 in 24 hours / Joe Habraken.

p. cm.

ISBN 0-672-33012-1

1. Microsoft Windows server. 2. Operating systems (Computers) I.

Title.

QA76.76.O63H3267 2008

005.4'476-dc22

2008014765

Printed in the United States of America

First Printing May 2008

Trademarks

All terms mentioned in this book that are known to be trademarks or service marks have been appropriately capitalized. Sams Publishing cannot attest to the accuracy of this information. Use of a term in this book should not be regarded as affecting the validity of any trademark or service mark.

Warning and Disclaimer

Every effort has been made to make this book as complete and as accurate as possible, but no warranty or fitness is implied. The information provided is on an "as is" basis. The author and the publisher shall have neither liability nor responsibility to any person or entity with respect to any loss or damages arising from the information contained in this book.

Bulk Sales

Sams Publishing offers excellent discounts on this book when ordered in quantity for bulk purchases or special sales. For more information, please contact

U.S. Corporate and Government Sales

1-800-382-3419

corpsales@pearsontechgroup.com

For sales outside of the U.S., please contact

International Sales

international@pearson.com

Editor-in-Chief

Karen Gettman

Executive Editor

Neil Rowe

Aquisitions Editor

Brook Farling

Development Editor

Mark Renfrow

Managing Editor

Patrick Kanouse

Senior Project Editor

San Dee Phillips

Copy Editor

Margo Catts

Indexer

Ken Johnson

Proofreader

Mike Henry

Technical Editor

Jeff Guillet

Publishing Coordinator

Cindy Teeters

Cover and Interior Designer

Gary Adair

Composition

Regina Rexrode

The Safari® Enabled icon on the cover of your favorite technology book means the book is available through Safari Bookshelf. When you buy this book, you get free access to the online edition for 45 days.

Safari Bookshelf is an electronic reference library that lets you easily search thousands of technical books, find code samples, download chapters, and access technical information whenever and wherever you need it.

To gain 45-day Safari Enabled access to this book:

- ▶ Go to <http://www.informit.com/onlineedition>
- ▶ Complete the brief registration form
- ▶ Enter the coupon code MGJA-EUDK-IMWT-WJK8-FZA7

If you have difficulty registering on Safari Bookshelf or accessing the online edition, please email customer-service@safaribooksonline.com.

Introduction

Selecting and deploying a network operating system is one of the most important tasks shouldered by a network administrator. In this book, I wanted to put together a body of information related to the newest version of Microsoft's powerful network operating system platform—Microsoft Windows Server 2008—that would not only highlight the functions and capabilities of the network server software, but also provide a hands-on approach to deploying the product. The *Sams Teach Yourself in 24 Hours* format provides for both the subject matter coverage and a practical step-by-step look at important server features and tools.

Microsoft has spent a great deal of time and effort (and development money) to improve both the security and scalability of Windows Server 2008. *Sams Teach Yourself Windows Server 2008 in 24 Hours* provides you with all the information you need to get a Windows domain up and running. Coverage of network services and the ins and outs of supporting users on the network is also provided.

Material in the book is approached in a straightforward, step-by-step manner that makes it easy to digest the information. The hours in the book are arranged so that there is a building of information as you move from Hour 1 to Hour 24.

Who Should Use This Book?

This book is designed for people who have a basic knowledge of computer networking. The book is arranged in 24 self-contained hours. Each hour helps build your knowledge base of Windows Server 2008. Coverage includes many important Windows Server 2008 network services, such as the Active Directory Domain Services, Group Policy, DHCP, DNS, and file and print services. A hands-on approach, coupled with easy-to-read background information, will help you quickly enlarge your knowledge base of Microsoft's powerful network operating system platform.

The book is divided into four parts. Each part provides a grouping of hours that share a common theme.

Part I, "Server Installation and Configuration," includes hours that provide you with information on installing the Windows Server 2008 operating system and configuring a server running this network operating system for a variety of possible roles. The new Server Manager is also introduced in this part of the book. Part I also provides you with insight

Sams Teach Yourself Windows Server 2008 in 24 Hours

into using Windows Deployment Services to deploy domain clients and servers, and shows you how to configure hard drives and volumes on your servers.

Part II, “Network Users, Resources, and Special Server Roles,” includes hours that help you expand your knowledge of data communications on the network through a discussion of the TCP/IP protocol and securing resources with share and NTFS permissions. You also learn how to bring your domain online by configuring a domain controller with the Active Directory Domain Services, and you learn how to use Group Policy and Network Access Protection to standardize and protect your domain. This part also provides information on how to provide file and printing services to your network users.

Part III, “Advanced Networking,” provides information on a number of Windows Server 2008 roles, such as Routing and Remote Access, WINS, and Terminal Services. The hours in Part III help you deploy remote access in your domain and configure a server running Windows Server 2008 as a router. You learn how to install WINS on the network and supply network users access to tools and applications via the Windows Terminal Services role.

Part IV, “Network Security, Web Services, and Performance Monitoring,” provides hours that help you tackle security and services related to data traffic on your network and help you provide web services to your user base. It covers securing the local network with the Windows Firewall and securing IP data packets with IPSec. It also looks at the use of advanced security strategies such as certificate services. Tools such as the Performance Monitor, Reliability Monitor, and the Event Viewer are explored in the context of keeping important domain servers up and running at peak performance.

Conventions Used in This Book

Certain conventions have been followed in this book to help you digest all the material. For example, at the beginning of each hour, you’ll find a list of the major topics that will be covered in that particular hour. You will also find that icons are used throughout this book. These icons either are accompanied by additional information on a subject or supply you with shortcuts or optional ways to perform a task. These icons are as follows:

By the Way

By the Way elements include additional information related to the current topic, such as asides and comments.

Did you Know?

Did You Know elements contain shortcuts and hints on performing a particular task.

Introduction

At the end of each hour, you will find both a Summary section and a Q&A section. The Summary section provides a brief encapsulation of the core information covered in the hour. The Q&A section provides a series of questions and answers that help cement important facts and concepts covered in the hour.

HOUR 1

Introducing Microsoft Windows Server 2008

What You'll Learn in This Hour:

- ▶ Introducing Windows Server 2008
- ▶ Improvements and Additions to Windows Server 2008
- ▶ The Different Flavors of Windows Server 2008

In this hour, you are introduced to the latest version of Microsoft's network operating system (NOS) platform: Microsoft Windows Server 2008. You'll learn about the features that Windows Server 2008 has inherited from its predecessors and some of the new features provided by this NOS. We also look at the different editions of Windows Server 2008.

Introducing Windows Server 2008

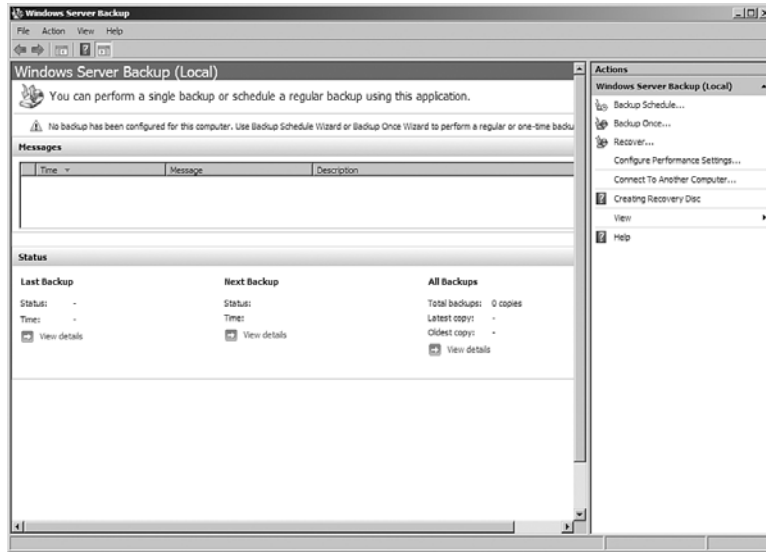
Microsoft Windows Server 2008 is the latest version of Microsoft's server network operating system. Windows Server 2008 builds on the features found in Windows Server 2003 and also offers a number of enhancements. Windows Server 2008 was part of the development cycle that produced Microsoft's Windows Vista desktop operating system.

During the development cycle, Longhorn, now known as Windows Server 2008, incorporated the best of what was found in the Windows Server 2003 environment and also adapted some of the new bells and whistles that are also found in the Windows Vista operating system. Windows Server 2008 also provides a number of improvements over Windows Server 2003, while still providing a scalable enterprise networking platform that can be easily expanded as a company or organization grows.

In terms of features adopted from Windows Vista, you will find that Windows Server 2008 shares a number of similarities with Windows Vista, including the Start Menu, desktop, and Windows Control Panel. Thanks to Windows Vista, Windows Server 2008 also now provides a better native backup utility: the Windows Server Backup snap-in (see Figure 1.1). This

backup utility runs in the Microsoft Management Console (as do many other snap-ins available in Windows Server 2008) and enables you to back up and restore server files to backup media including DVDs.

FIGURE 1.1
The Windows Server Backup snap-in.



Windows Server 2008 also takes advantage of Windows BitLocker drive encryption, which is a new encryption feature that was created during the development cycle that produced Windows Vista and Windows Server 2008. BitLocker encrypts all the data on the volume. It can be used to encrypt all the data on the volume that contains the Windows operating system, including paging files, applications, and data used by applications.

Although Windows Server 2008 has adopted some Windows Vista features and also provides many new features of its own, you shouldn't find the Windows Server 2008 administrative environment totally alien if you have used other versions of the network operating system such as Windows Server 2003 (or even the earlier version of this product, Windows 2000 Server). Many of the features and tools that were made available in Windows Server 2003 are also found in Windows Server 2008, including these:

- ▶ **The Active Directory**—Known as the Active Directory for Domain Services (AD DS) in Windows Server 2008, this directory service provides the hierarchical directory of objects on the network (such as users, computers, and printers). AD DS also provides the logical hierarchy for your enterprise forests and child domains and the physical hierarchy for sites.
- ▶ **Group Policy**—Group Policy provides a way to control the user and computer environment found on the network. Application deployment, client desktop

settings, and policies related to administrative controls such as auditing can all be configured in Group Policy (Group Policy is discussed in Hour 11, “Deploying Group Policy and Network Access Protection”).

- ▶ **High-level security**—The same security options that you found in Windows Server 2003 are also available in Windows Server 2008, such as data encryption, certificates, and a number of other security enhancements, such as the IP Security Protocol. Windows Server 2008 builds on these security features and offers even greater security than its predecessor, including features such as BitLocker drive encryption and the new Network Access Protection service (discussed in Hour 11).
- ▶ **Web server capabilities**—Windows Server 2008 provides the newest version of Microsoft’s Internet Information Server—version 7 (IIS7)—which incorporates content delivery platforms such as ASP.NET and SharePoint services into one easy-to-manage web platform. IIS7 also supplies a new management snap-in that can be run in the Microsoft Management Console or MMC (see Hour 23, “Using the Internet Information Service,” for more about IIS7).

Windows Server 2008 builds on the security that was provided by Windows 2003 Server and now provides a way to limit network access based on health policies related to Windows Update and the configuration of the Windows Firewall. For more information see Hour 11.

**By the
Way**

In addition to features gleaned from the development of Windows Vista and the solid foundation provided by Windows Server 2003, Windows Server 2008 provides many enhancements, more enhancements than can be covered in one book. Let’s take a look at some of the improvements and new features provided by Windows Server 2008.

Improvements and Additions to Windows Server 2008

A number of improvements and additions have been made to Windows Server 2008. As already mentioned, Windows Server 2008 shares some of the look and feel provided by Windows Vista. Windows Server 2008 also supplies a number of new tools; one of the most dramatic of these new tools in terms of managing a Windows server is the Server Manager.

In Windows Server 2003, a number of the administrative tools ran as snap-ins in the MMC. As you added a role to the server, such as DNS or DHCP, a new snap-in would

be available. The new Server Manager provides easy access to nearly all the configuration, monitoring, and troubleshooting snap-ins that you will need to use as you manage your Windows server (see Figure 1.2).

FIGURE 1.2
The Server Manager provides quick access to your server management tools.



The Server Manager not only provides quick access to many of the management snap-ins, but it also includes quick access to the Add New Roles Wizard and enables you to view the services that are installed and running in association with a particular server role. The Server Manager is introduced in Hour 3, “Configuring Windows Server 2008 Basic Settings,” and is used extensively throughout the book to manage the various roles provided by Windows Server 2008.

Another important change to Windows Server 2008 is how it approaches installing new roles and services on a server. When you boot the server, Windows Server 2008 loads the Initial Configuration Tasks window. This utility enables you to view the roles that are currently installed on the server and also provides easy access to settings such as the time zone, the computer name and domain membership, automatic updates, and the server’s network interfaces.

More importantly, both the Initial Configuration Tasks window (and the Server Manager) provide quick access to the Add Roles Wizard. The Add Roles Wizard (see Figure 1.3) not only makes it easy for you to install a new role such as the domain controller role, DNS role, or the Active Directory Certificate Services role, it also makes sure that you install all the necessary services required for that role to function appropriately.

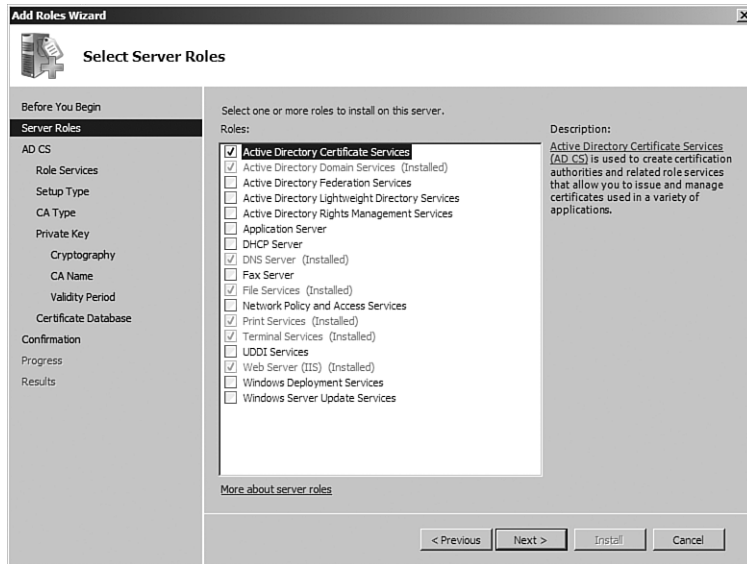


FIGURE 1.3
The Add Roles Wizard enables you to add roles and also helps to make sure that required services for the role are installed.

For example, if you are installing the Certification Authority Web Enrollment service (a web interface where users can request and renew certificates) as part of the Active Directory Certificate Services (a server role), the Add Roles Wizard alerts you to the fact that this service requires IIS7 and that it will be installed during the process of adding the role to your server.

Another improvement provided by Windows Server 2008 is that you can now deploy read-only domain controllers. This enables you to deploy a domain controller in a less secure environment such as a branch office. Read-only domain controllers contain a read-only copy of the Active Directory, which provides much more security in these environments.

Windows Server 2008 also enables you to perform a core installation of the network operating system. A core installation is a minimal or stripped-down installation of Windows Server 2008 that is managed from the command line (the Windows GUI interface is not installed) and can supply certain services and server roles to the client computers on your network. A core installation can provide services such as print services and file services. A server with a core installation can also function in roles such as a DHCP server and DNS server (Windows Server 2008 installations are discussed in Hour 2, “Installing and Configuring Windows Server 2008”).

In Windows Server 2003, a number of new command-line tools were added, such as DiskPart (a disk partitioning tool) and the `dfscommand` Distributed File System utility that

enables you to create DFS roots from the command line. Windows Server 2008 takes the command-line utility one step further with the Windows PowerShell (also available in Windows Vista), which provides a powerful set of command-line tools (called *cmdlets*) and a full-fledged scripting language. PowerShell (see Figure 1.4) is added to Windows Server 2008 as a feature, and although it is not covered in this book (we concentrate on the snap-ins that run in the Server Manager and the MMC), it provides you with an alternative to the various snap-ins and other GUI tools provided by the network operating system.

FIGURE 1.4

PowerShell is a new command-line and scripting tool.

```

Windows PowerShell
Copyright (C) 2006 Microsoft Corporation. All rights reserved.

PS C:\Users\Administrator> get-help get-help

NAME
    Get-Help

SYNOPSIS
    Displays information about Windows PowerShell cmdlets and concepts.

SYNTAX
    Get-Help [-name <string>] [-component <string[]>] [-functionality <string[]>] [-role <string[]>] [-category <string[]>] [-full] [[CommonParameters]]
    Get-Help [-name <string>] [-component <string[]>] [-functionality <string[]>] [-role <string[]>] [-category <string[]>] [-detailed] [[CommonParameters]]
    Get-Help [-name <string>] [-component <string[]>] [-functionality <string[]>] [-role <string[]>] [-category <string[]>] [-examples] [[CommonParameters]]
    Get-Help [-name <string>] [-component <string[]>] [-functionality <string[]>] [-role <string[]>] [-category <string[]>] [-parameter <string>] [[CommonParameters]]

DETAILED DESCRIPTION
    The Get-Help cmdlet displays information about Windows PowerShell cmdlets and concepts. You can also use "Help <cmdlet name> | <topic-name>" or "Cmdlet-name > /?". "Help" displays the help topics one page at a time. The "/" display help for cmdlets on a single page.

RELATED LINKS
    Get-Command
    Get-Service
    Get-Member

REMARKS
    For more information, type: "get-help Get-Help -detailed".
    For technical information, type: "get-help Get-Help -full".

PS C:\Users\Administrator> _
  
```

Windows Server 2008 also makes the management of printers and print servers easier in your domain. The new Print Management snap-in (see Figure 1.5) enables you to view print servers and the printers that they provide for the domain. You can even locate (using filters) printers that currently have print jobs and printers that are not ready (meaning paused or offline).

The discussion here only scratches the surface of new features found in and the improvements made to the Windows Server 2008 platform. The lists that follow provide a quick look at some of the most important new features and the improvements found in the Windows Server 2008 network operating system platform.

New features:

- ▶ **Read-only domain controllers**—This feature enables you to deploy read-only domain controllers in your domain for added security and branch office or other remote location access to the Active Directory database.

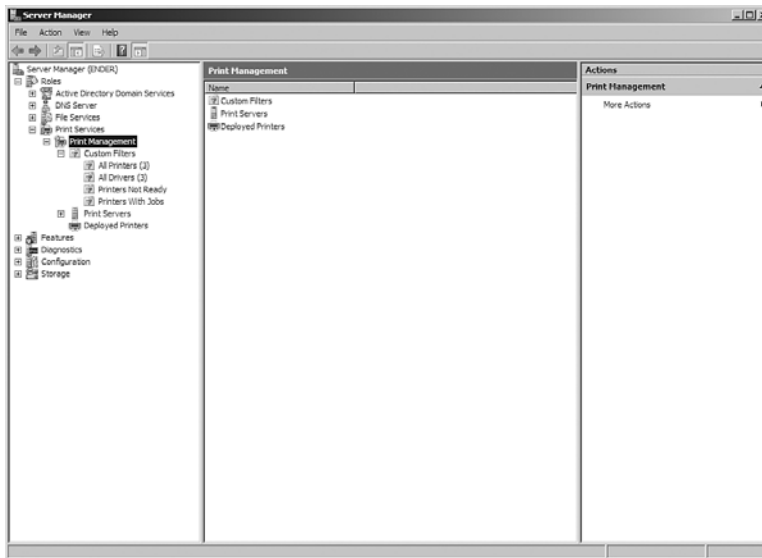


FIGURE 1.5
The Print Management snap-in.

- ▶ **Internet Information Services 7 (IIS7)**—IIS7 provides an easily managed platform for a number of web-based technologies, including ASP.NET and SharePoint services. IIS7 also enables you to manage your web servers, using a web browser.
- ▶ **Windows Server 2008 core installation**—The stripped-down core installation enables you to deploy server services and roles on server hardware that does not meet the hardware requirements (such as RAM) for a full Windows Server 2008 installation.
- ▶ **Internet Protocol version 6**—Windows Server 2008 installs IPv6 by default and allows you to run IPv4 and IPv6 in tandem on your network interfaces.
- ▶ **Server virtualization**—Windows Server 2008 provides Hyper-V, which is a software virtualization technology that enables you to run multiple virtual servers on a single server.

Improved features:

- ▶ **Windows Deployment Services**—Windows Deployment Services (WDS) replaces the Remote Installation Services (RIS) provided by Windows Server 2003. WDS allows you to install both Windows Server 2008 and client operating systems (including Windows Vista and Windows XP) using an image-based installation. WDS is discussed in Hour 5, “Implementing Windows Deployment Services.”

- ▶ **Windows Firewall**—The new Windows Firewall with Advanced Security found in Windows Server 2008 offers you greater management control of the firewall in the new Windows Firewall with Advanced Security snap-in. IPSec has also been added to the Windows Firewall to provide greater IP traffic security.
- ▶ **Reliability and Performance Monitor**—The new Reliability and Performance Monitor enables you to monitor server performance in real time. You can monitor hardware and application performance and create threshold alerts and performance reports.

We will be working with a number of the new features and improvements found in the Windows Server 2008 operating system. These features are discussed throughout the book in the context of the appropriate subject matter.

The Different Flavors of Windows Server 2008

The Windows Server 2008 family consists of several different network operating systems that are designed to serve businesses of different sizes and different needs.

The members of the Windows Server 2008 family are listed here and discussed in the sections that follow:

- ▶ Standard Edition
- ▶ Enterprise Edition
- ▶ Datacenter Edition
- ▶ Web Edition

Standard Edition

Standard Server is considered the entry-level version of Windows Server 2008 (if there is such a thing as “entry-level” with server platforms). It is suitable for smaller businesses and organizations (“smaller” meaning users in the hundreds, not thousands, although multiple standard servers in a tree or trees would certainly accommodate even the largest of companies).

Standard Server supplies all the features discussed in this hour, including Hyper-V virtualization, and IIS7. It also provides for Network Address Translation and

multihomed servers (servers with more than one network interface) that allow multiple network clients to share the same Internet connection in a small business setting.

Standard Server supports multiple processors (four cores on both x86 and x64 systems) and up to 4GB of RAM on an x86-based server and 32GB of RAM on an X64-based server. Standard Server provides a maximum of 250 Remote Access connections and 250 Terminal Services connections.

Because this book is an introduction to and survey of installing and administering a Windows network environment, we primarily cover the tools and features found in Windows Server 2008 Standard Edition. These features and server roles would also be available in the Windows Server 2008 Enterprise Edition. The Web Edition is intended as a web server product and does not contain many of the standard features for deploying a domain.

**By the
Way**

Enterprise Edition

The Enterprise Edition supplies all the features and tools provided by the Standard Edition. The major difference is that the Enterprise Edition is considered a workhorse platform for very large enterprisewide networks.

To provide the processing power needed for larger networks, the Enterprise Edition can support up to eight processors and also supports server clustering (up to 16 cluster nodes, meaning that 16 servers can be tied together using the clustering feature and thus can act as one megaserver).

The Enterprise Edition on an x86-based server allows up to 64GB of RAM and up to 2TB on an x64-based system. This edition also provides for unlimited connections by Remote Access and Terminal Services clients.

Datacenter Edition

The Datacenter Edition provides all the features found in the other editions and allows you to deploy servers with a great deal of hardware muscle. The Datacenter Edition provides for multiple processors (32 x86 and 64 x64) and has the same potential RAM capacity as the Enterprise Edition (64GB on x86 and 2TB on X64).

The Datacenter Edition provides for unlimited Remote Access and Terminal Services connections. It also grants you unlimited deployment of virtual servers, whereas the limit with the Enterprise Edition is four and with the Standard Edition is one. The Datacenter Edition is considered the appropriate platform for very large-scale networks requiring access to large databases and real-time transaction validation.

Web Edition

The Web Edition is considered the ideal platform for web hosting; it is a scaled-down version of Windows Server and does not provide tools for deploying a domain-based network. The Web Edition provides IIS7 as its web platform.

The Web Edition supports multiple processors (four on both x86 and x64 systems) and up to 4GB of RAM on an x86-based server and 32 GB of RAM on an x64-based server. As a product intended for delivery of web-based content, the Web Edition does not support common server services such as Remote Access or Terminal Services.

By the Way

Microsoft also provides two additional versions of Windows Server 2008: Windows Server 2008 for Itanium-based systems and Windows HPC Server 2008. The Itanium version is designed for networks that require large databases and custom applications. The HPC version is designed for high-performance computing (thus the HPC) environments using server clustering. Bottom line: Both of these versions are for big, high-capacity networks.

All the versions of Windows Server 2008, except for the Web Edition, include the Hyper-V virtualization platform. However, you can also purchase the Standard, Enterprise, and Datacenter versions of Windows Server 2008 without the Hyper-V technology. Obviously, Microsoft provides enough flavors of Windows Server 2008 that you can select the edition that will work best for your networking needs.

Summary

This hour covered the latest version of Microsoft's network operating system: Windows Server 2008. Windows Server 2008 provides the services and featured offered in the previous Windows Server 2003 networking platform and also provides a number of improvements and new features.

Windows Server 2008 was developed in the same development cycle as Windows Vista and so shares some new features first seen at the release of Vista, such as the new desktop and Control Panel look. Windows Server 2008 now includes a new more robust backup utility called Windows Server Backup. Windows Server 2008 also includes the Windows PowerShell, first introduced with Windows Vista.

Windows Server 2008 provides new administrative tools such as the Server Manager, which supplies access to most of the role management snap-ins used to manage server roles and services. Windows Server 2008 also provides greater security possibilities than its predecessors, including a new Windows Firewall, IPSec, the BitLocker drive encryption, and the new Network Access Protection Service.

New server deployment possibilities such as read-only domain controllers and the Windows core installation provide you with flexibility for client access to the Active Directory Domain Services and services such as DHCP and DNS. The Hyper-V virtualization technology enables you to run multiple server deployments on a single computer.

The Windows Server 2008 provides a family of network server products, including the Standard, Enterprise, Datacenter, and Web Editions. The Standard Edition is considered the entry-level version of this powerful server platform and can be purchased with or without the new Hyper-V virtualization platform.

Q&A

Q. *What are some of the new tools and features provided by Windows Server 2008?*

A. Windows Server 2008 now provides a desktop environment similar to Microsoft Windows Vista and includes tools also found in Vista, such as the new backup snap-in and the BitLocker drive encryption feature. Windows Server 2008 also provides the new IIS7 web server and the Windows Deployment Service.

Q. *What are the different editions of Windows Server 2008?*

A. The entry-level version of Windows Server 2008 is the Standard Edition. The Enterprise Edition provides a platform for large enterprisewide networks. The Datacenter Edition provides support for unlimited Hyper-V virtualization and advanced clustering services. The Web Edition is a scaled-down version of Windows Server 2008 intended for use as a dedicated web server. The Standard, Enterprise, and Datacenter Editions can be purchased with or without the Hyper-V virtualization technology.

Index

A

- A (host) records, DNS, 342-344
- Account Is Disabled check box (Active Directory), 158
- Account Operators groups, 175
- Account tab (Users and Computers snap-in, Properties dialog box), 160-161
- ACL (Access Control Lists), NTFS permissions, 282
- Action screen (Task Scheduler), 43
- Actions pane (Server Manager), New User dialog box, 49
- Actions view (IIS Manager), Edit Anonymous Authentication Credentials dialog box, 527
- active command, 296
- Active Directory
 - AD DS, 4, 332-334
 - client computers
 - adding to domains, 197-199
 - deleting accounts, 200
 - moving accounts between domains, 200
 - remote administration, 201
 - viewing account properties, 202-203
 - Delegation tab, 230
 - delegation, 190-191
 - DHCP server authorization, 360
 - domain user accounts
 - adding users to, 156-159
 - setting logon hours, 161-162
 - setting properties in, 159-161
 - specifying computers for login, 162
 - domains, DNS domains versus, 329
 - groups, 169
 - Account Operators, 175
 - adding users to, 177-178

Active Directory

- Administrators, 175
 - Backup Operators, 175
 - built-in groups, 174-176
 - creating, 176-177
 - default groups, 172-174
 - deleting, 177
 - Domain Admins, 173
 - domain local, 171-172, 175-176
 - Domain Users, 173
 - Enterprise Admins, 174
 - global, 171-172
 - membership, 172
 - naming, 177
 - nesting, 172
 - Print Operators, 175
 - removing users from, 178
 - Schema Admins, 174
 - scope of, 170-172, 177
 - Server Operators, 175
 - universal, 170-172
 - Users, 175
 - hierarchy of, 142-143
 - local accounts, 155
 - objects, 142, 162-163, 262
 - queries, creating, 164-165
 - searching in, 164
 - selecting multiple objects, 163
 - OU, 190
 - passwords, 158
 - prestige client computer accounts, 81
 - printers, adding to, 317
 - Properties dialog box, 202-203
 - shared printers, listing on, 310
 - shares, publishing, 262-263
 - sites
 - configuration, 185-188
 - creating, 184-185
 - Default-First-Site-Name, 185
 - delegation, 190
 - editing, 188
 - links, 187-188
 - properties, 188
 - replication, 188
 - subnets, 185-186
 - sites, 183
 - trees, 142-143
 - zones, storing, 337
- Active Directory Domain Services Installation Wizard**
- AD DS
 - child domain creation, 151
 - installation, 146
 - Group Policies, 216
- Active Directory Domains and Trusts snap-in, Raise Domain Functional Level dialog box, 180-181**
- Active Directory Sites and Services snap-in**
- Inter-Site Transports folder, 187
 - New Object-Site dialog box, 185
 - New Object-Site Link dialog box, 187-188
 - Properties dialog box, 188
 - sites, creating, 184-185
 - Sites folder, 185
 - Subnets folder, 185-186
- Active Directory Users and Computers snap-in, 169**
- Computer Name/Domain Changes dialog box, 204
 - groups
 - adding users to, 177-178
 - creating, 176-177
 - removing users from, 178
 - New Object Organizational Unit dialog box, 181
 - New Object-Group dialog box, 176
 - New Object-Computer dialog box, 198-199
 - OU, creating, 181-183
 - Properties dialog box, Members tab, 177-178
 - Select Group dialog box, 178
 - System Properties dialog box, 204
 - Windows Security dialog box, 205
- Active Registrations Folder (WINS snap-in), 457**
- Active Server Wizard, Terminal Services, 434**
- Active Users and Computers snap-in, Properties dialog box, 182**
- AD CS (Active Directory Certificate Services) installation, 495-499**

Advanced Features command (View menu)

- AD DS (Active Directory Domain Services), 4, 142**
 - child domains, creating, 149-153
 - configuration, 148
 - Directory Service Restore Mode Administrator passwords, 148, 153
 - DNS, 332-334
 - Domains and Trusts snap-in, 154
 - Group Policies, 216
 - installation, 144-147
 - management tools, 154
 - root domains, creating, 149
 - Sites and Services snap-in, 154
 - Users and Computers snap-in, 154
 - adding users to domains, 157
 - Properties dialog box, 160
- Add Counters dialog box (Performance Monitor), 544-545**
- Add Features dialog box (Initial Configuration Tasks window), 62**
- Add Features Wizard, 67-68**
 - Backup utility installation, 109-110
 - Group Policy Management snap-in installation, 218
 - Terminal Server configuration, 436
- Add Image Wizard, WDS, 77-79**
- Add or Edit DHCP Scopes screen (Add Roles Wizard), Add Scope dialog box, 358-361**
- Add Printer Wizard, 306**
 - Do Not Share This Printer option, 308
 - Print a Test Page option, 309
- Add Role Services Wizard, RRAS installation, 410**
- Add Roles Wizard, 6, 61, 311**
 - AD CS installation, 495-499
 - AD DS
 - child domain creation, 149-150
 - installation, 144-145
 - Add or Edit DHCP Scopes screen, 358-361
 - Confirmation page, 249
 - DHCP installation, 355, 358
 - DNS installation, 334
 - file server configuration, 246
 - IIS 7.0 installation, 515
 - Installation Results page, 249
 - Network Policy and Access Services, 234-235, 381-382
 - Report Options page, 249
 - Select Server Roles page, File Services check box, 246
 - server role installation, 58
 - Skip This Page by Default check box, 61, 246
 - Terminal Services, 429-431
 - Volume Monitoring Options dialog box, 249
 - Web Server (IIS) check box, 515
- Add Scope dialog box (Add Roles Wizard), 358-361**
- Add Server Role Wizard, DFS installation, 267**
- Add Virtual Directory dialog box (IIS Manager, Virtual Directories page), 530**
- Add Web Site dialog box (IIS Manager), 519-520**
- Add/Remove Servers dialog box (Print Management snap-in), 314-315**
- Address tab (Users and Computers snap-in, Properties dialog box), 160**
- ADMIN\$ (administrative share), 256**
- Administrative Templates (Group Policy Objects Editor), ADMX files, 224**
- Administrator accounts**
 - creating, 48
 - Domain Admins groups, 173
 - Domain User groups, 173
- Administrator certificates (digital), 507**
- Administrators groups, 175**
 - NTFS permissions, 291
 - printer permissions, 322
- ADMX files, 224**
- adprep command, Windows Server 2008 upgrades, 20**
- Advanced Features command (View menu), 183**

Advanced Security Settings dialog box

Advanced Security Settings dialog box, 289-290, 324

Advanced tab

System Properties dialog box, 45

WDS Properties dialog box, 82

Windows Firewall

Properties dialog box, 478

Settings dialog box, 471

WINS snap-in, Properties dialog box, 453

Advanced TCP/IP Settings dialog box, 136

algorithms (hash), CA, 497

Alias (CNAME) resource records, DNS, 343

All Drivers filter (Print Management snap-in), 320

All Printers filter (Print Management snap-in), 320

All Programs feature (Start menu), 32

allocation unit size (hard drives), 94

allowing/denying

NTFS permissions, 284-285

share permissions, 279

anonymous authentication, 527-528

Appearance and Personalization window (Control Panel), 36

Application layer (OSI model), 123

Application logs (Event Viewer), 562

Application Pool option (Web Site Defaults dialog box), 522

application servers, 57, 428

ARP (Address Resolution Protocol), 125

Attribute Editor tab (Advanced Features command), 183

Audit policies, 228

auditing

CA events, 502

printer access, 324

Auditing tab (CA Properties dialog box), 502

Authenticated group printer permissions, 322

authentication

anonymous authentication

disabling, 528

websites, 527

CHAP, 388

EAP, 387

exemption rules (Windows Firewall), 481

Network Level Authentication, 430

PAP, 389

RADIUS, 399-404

RRAS

CHAP, 388

configuration, 389-390

EAP, 387

PAP, 389

SPAP, 388

unauthenticated access, 389

SPAP, 388

Authentication option (IIS Manager, Features view), 527

Automatically Manage Paging File Size for All Drives check box (Virtual Memory dialog box), 45

Available Bytes counters, 550

Available Counters option (Add Counters dialog box), 545

B

B node type (NetBIOS), 448

backups

Backup Once Wizard, 111

Backup Operators groups, 175

Backup Schedule Wizard, 115

Backup snap-in, 3-4

accessing, 110

Backup Once Wizard, 111

Backup Schedule Wizard, 115

custom backups, 111

Enable System Recovery check box, 112

Recovery Wizard, 113-114

specifying drive(s), 111

VSS, 112

Backup utility (Properties dialog box, Tools tab), 107-109

custom backups, configuration, 111

DHCP database backups, loading, 374

differential backups, Backup utility support for, 108

- file markers, 107
 - GPO, 220
 - incremental backups, Backup utility support for, 108
 - media/software for, 107
 - normal backups, 108
 - planning, 108-109
 - remote backups, Backup utility support for, 109
 - restoring files from, 113-114
 - scheduling, 115
 - system recovery, 112
 - volume shadow copies, 113
 - WINS databases, 458
 - bandwidth, WINS, 448**
 - basic disks**
 - converting to dynamic disks, 95
 - partitions, 89
 - cluster size, 94
 - creating, 92-94
 - deleting, 94
 - designating free space available in, 93
 - numbering, 92
 - selecting file system for, 94
 - basic storage, 89**
 - Basic templates (data collector sets), 553**
 - binary numbers, decimal to binary conversions (IPv4 subnetting), 129**
 - Binding dialog box (Add Web Site dialog box), 520**
 - BitLocker Drive Encryption, 294**
 - enabling, 297-300
 - installation, 297
 - volume creation, 295-296
 - bits (binaries), borrowing (IPv4 subnetting), 129**
 - biz domain name (DNS domains), 329**
 - blocking GPO inheritance, 231**
 - boot images, WDS, 76-79**
 - Boot tab, WDS Properties dialog box, 81**
 - BOOTP (Bootstrap Protocol), DHCP development, 354**
 - broadcast multicast messages, RIP neighbor communication, 420**
 - Browse For Folder dialog box**
 - Create Quota dialog box, 252
 - WINS snap-in, 459
 - built-in groups (Active Directory), 174-176**
- C**
- CA (Certificate Authorities)**
 - configuration, 497-504
 - CSR, 497
 - digital certificates, 494-495
 - EAP, 388
 - Enterprise CA, 496
 - events, auditing, 502
 - hash algorithms, 497
 - key character length, 497
 - managing, 508-510
 - Root CA, 497
 - servers, naming, 498
 - Standalone CA, 496
 - Subordinate CA, 497
 - caching-only DNS servers, 346**
 - calculators (subnet), 131**
 - canceling print jobs, 318**
 - Certificate Authorities snap-in, 508**
 - CA configuration, 499
 - CA Properties dialog box
 - Auditing tab, 502
 - Certificate Managers tab, 504
 - Enrollment Agents tab, 503
 - Exit Module tab, 503
 - Extensions tab, 503
 - General tab, 501
 - Policy Module tab, 501
 - Recovery Agents tab, 504
 - Security tab, 503
 - Storage tab, 501
 - Certification Revocation dialog box, 509
 - Certificate Request Wizard, 507**
 - Certificate Services, 500**
 - Certificate Templates snap-in, 500, 504**
 - certificates (digital)**
 - AD CS, installation, 495-499
 - Administrator certificates, 507
 - CA, 494-495
 - auditing events, 502
 - Enterprise CA, 496

certificates (digital)

- Root CA, 497
 - Standalone CA, 496
 - Subordinate CA, 497
 - personal certificates, 506
 - requesting, 504-507
 - failed requests, 509
 - pending requests, 509
 - revoked requests, 509-510
 - servers, viewing properties of, 500
 - templates, 500, 504, 508
 - User certificates, 507
 - viewing, 508
 - Certificates snap-in, 505-507**
 - Certification Authority Web Enrollment service, 496**
 - Certification Revocation dialog box (Certification Authority snap-in), 509**
 - Change permissions, 279**
 - CHAP (Challenge Handshake Authentication Protocol), 388**
 - Check Disk dialog box (Properties dialog box, Tools tab), 107**
 - child domains, 54, 142, 149-153**
 - Class A addresses (IPv4), 126-128, 131**
 - Class B addresses (IPv4), 126-128**
 - Class C addresses (IPv4), 126-128, 131**
 - Class D addresses (IPv4), 126**
 - Class E addresses (IPv4), 126**
 - Classic Start menu, changing to, 33**
 - clean installation (Windows Server 2008), 19-23**
 - clearing**
 - event logs (Event Viewer), 565
 - graphs (Performance Monitor), 547
 - client computers**
 - adding to domains, 195
 - Active Directory, 197-199
 - legacy operating systems, 196
 - network protocols, 196
 - standardizing hardware configurations, 196
 - Windows 2000 clients, 208
 - Windows Vista clients, 204-206
 - Windows XP clients, 206-207
 - firewalls, allowing remote administration through, 201
 - managing accounts, Active Directory, 200-203
 - network settings, viewing, 208-209
 - Volume Shadow Copy Services, 265
 - workgroups, creating, 212-213
- client OS, WDS remote installation, 83-85**
 - Client Settings tab (Terminal Services Properties dialog box), 439**
 - Client tab, WDS Properties dialog box, 82**
 - clients**
 - DHCP
 - configuration, 372
 - DHCPDISCOVER messages, 354
 - DHCPREQUEST messages, 355
 - remote access client configuration, 390-392
 - thin, 427
 - VPN client configuration, 395-397
 - WINS client configuration, 449, 459
 - Clock, Language, and Region window (Control Panel), 37**
 - clusters**
 - servers, 11
 - size (partitions), 94
 - CNAME (Canonical Name) resource records, DNS, 343**
 - com domain name (DNS domains), 329**
 - COM+ tab (Users and Computers snap-in, Properties dialog box), 161, 182**
 - Committed Bytes counters, 550**
 - compatibility lists (hardware), Windows Server 2008 installation, 17**
 - Compression option (IIS Manager, Features view), 523-524**
 - Computer (using Kerberos V5) option (Customize IPsec Settings dialog box), 487**

- Computer certificate from this certification authority option (Customize IPSec Settings dialog box), 487**
- Computer Configuration section (Group Policy Objects Editor), 222-224**
- Computer folder, managing share permissions, 280**
- Computer Management snap-in, 200-201**
- Computer Name Changes dialog box, Member of Domain option, 207**
- Computer Name dialog box (New Object-Computer dialog box), 198**
- Computer Name/Domain Changes dialog box**
 - Active Directory Users and Computer snap-in, 204
 - System Properties dialog box, 211
- Computer window, Properties dialog box, 105-107**
- computers**
 - accounts
 - deleting, 200
 - moving between domains, 200
 - remote administration, 201
 - viewing properties, 202-203
 - client computers
 - adding to domains, 195-199, 204-208
 - allowing remote administration through firewalls, 201
 - managing accounts, 200-203
 - viewing network settings, 208-209
 - Volume Shadow Copy Services, 265
 - workgroups, 212-213
 - web server configuration, 515
 - Configuration icon (Server Manager), 47**
 - Configuration snap-in (Terminal Services)**
 - Licensing Diagnosis tool, 435
 - TS Licensing service, 433
 - Configure VPN or Dial-Up Wizard, 401**
 - Configure Your Server Wizard, 310**
 - configuring**
 - Active Directory sites, 185-188
 - AD DS, 148
 - backups, 111
 - CA, 497-504
 - computers as web servers, 515
 - data collector sets, 556
 - DHCP
 - clients, 372
 - Relay Agent, 423-424
 - scopes, 358-361
 - DNS clients, 345-346
 - DNS servers, 335
 - cache-only servers, 346
 - forward lookup zones, 336-339
 - reverse lookup zones, 339-341
 - file servers
 - disk quotas, 250-254
 - file services role assignments, 246-249
 - GPO, 226-227
 - hardware, standardizing configurations, 196
 - IIS 7.0, 518
 - IP routing
 - dynamic routing, 417-418
 - static routing, 415-416
 - IPv4 addressing, 135
 - ipconfig command, 137
 - ping command, 138
 - IPv6 addressing, 135
 - ipconfig command, 137
 - ping command, 138
 - modem ports, RRAS configurations, 385
 - NAT, 491-493
 - network interfaces, 413-414
 - NPS servers, 401-404
 - paging file settings, 45
 - RIP interfaces, 418-421
 - routing
 - dynamic routing, 417-418
 - RIP interfaces, 418-421
 - static routing, 415-416
 - RRAS, 383-385
 - scopes (IP addresses), 358-361

configuring

- Terminal Server, 436-438
- Terminal Services, 438
- virtual memory settings, 45
- VPN clients, 395-397
- WDS, 74-76, 80-82
- websites, IIS 7.0, 522-526
- Windows 2000 clients as domains, 208
- Windows Firewall with Advanced Security, 472-474
- Windows Firewall, 470-472
- Windows Vista clients as domains, 204-206
- Windows XP clients as domains, 206-207
- WINS, 449-454, 459
- WSHV, 237-239
- Confirmation page (Add Roles Wizard), 249**
- Connection Limits option (Web Site Defaults dialog box), 522**
- connection security rules (Windows Firewall), 481-483**
- connections**
 - dial-in connections, managing, 397-398
 - server connections, netstat command, 138
 - VPN connections, managing, 397-398
- Control Panel**
 - accessing, 34
 - Appearance and Personalization window, 36
 - Clock, Language, and Region window, 37
 - Ease of Access Center window, 37
 - Hardware and Sound window, 36
 - Network and Internet window, 35
 - Printers window
 - Preferences dialog box, 38
 - viewing installed printers, 305
 - viewing printer settings, 38
 - Programs window, 36, 40-41
 - Properties dialog box, 309-310
 - Security window, 35
 - System and Maintenance window, 34
 - System Properties dialog box, 44-45
 - Task Scheduler, 42
 - User Accounts window, 36
- Convert to Dynamic Disk dialog box (Disk Management snap-in, Details pane), 95**
- converting**
 - decimals to binaries (IPv4 subnetting), 129
 - FAT32 formatted disks to NTFS, 286
- copying**
 - databases, DNS servers, 338
 - NTFS (NT File System) permissions, 285
- core installation, 9, 17, 25-27**
- counters**
 - disk counters, 549-550
 - memory counters, 550
 - performance counters, 549
 - Performance Monitor, 543
 - adding to, 545-546
 - deleting from graphs, 546
 - highlighting in, 546
 - viewing in graphs, 546
- country domain names, DNS domains, 329**
- CPU option (Reliability and Performance Monitor snap-in, Resource View pane), 540**
- CPU (central processing units), Windows Server 2008 requirements, 17**
- Create a Custom Task to Delegate option (Delegation of Control Wizard), 190**
- Create a Share Wizard, 278**
- Create Basic Task Wizard (Task Scheduler), 42**
- Create New Data Collector Set Wizard, 551, 554-555**
- create partition primary command (diskpart), 296**
- Create Quota dialog box, 252, 254**
- Create Superscope Wizard, 370**
- Creator Owner group printer permissions, 322**
- CSP (Cryptographic Service Provider), CA, 497**
- Current Disk Queue Length counters, 550**

custom backup configuration, 111

custom rules (Windows Firewall), 476, 481

Customize IPsec Settings dialog box (Windows Firewall with Advanced Security Properties dialog box), 484-487

customizing IPsec, 484-487

D

data collector sets

adding, 554

Basic templates, 553

configuration, 556

creating, 551-556

event traces, adding to, 552

removing, 554

reports, viewing, 558-559

scheduling, 556

starting, 552

stop conditions, 557

System Diagnostics templates, 553

templates, saving, 556

data encryption

BitLocker Drive Encryption, 294-300

EFS, 293

Data Link layer (OSI model), 123

Database Verification tab (WINS snap-in, Properties dialog box), 453

databases

backups, loading DHCP, 374

distributed databases, DNS, 328

DNS servers, copying for, 338

WINS databases

- backups, 458
- deleting mappings, 457
- deleting records from, 458
- dynamic databases, 449
- restoring, 459
- static entries, 461
- static mappings, 456
- tombstoning mappings, 457
- viewing mappings of, 455

WINS server verification, 453

Datacenter edition (Windows Server 2008), 11

DDNS (Dynamic DNS Server standard), 328, 334

decimal to binary conversions, IPv4 subnetting, 129

dedicated file servers, 246

dedicated routers, 408

Default Backup Path dialog box (WINS snap-in, Properties dialog box), 458

Default Document Page option (IIS Manager, Features view), 524

default groups (Active Directory), 172-174

Default Web Site option (IIS Manager), 518

Default-First-Site-Name site, 185

DEFAULTIPSITELINK object, 185

defragmenting hard drives, 107

delegation (Active Directory), 190-191

Delegation of Control Wizard, 190

Delegation tab

Active Directory, 203, 230

Group Policy Management snap-in, 232

Delete Temporary Folders on Exit option (Terminal Server), 437

Delete the Record Only from This Server option (Active Registrations Folder), 458

deleting

Active Directory groups, 177

computer accounts, 200

counters, Performance Monitor, 546

disk quotas, 254

features, 68

partitions, 94

records from WINS databases, 458

server roles from servers, 65

users from groups, 178

volumes, 98

WINS mappings, 457

denying/allowing

NTFS permissions, 284-285

share permissions, 279

Detail pane (Server Manager), 64

Details pane

Details pane

- Disk Management snap-in, 91
 - Convert to Dynamic Disk dialog box, 95
 - New Raid-5 Volume Wizard, 103-104
 - New Spanned Volume Wizard, 97
- Print Management snap-in, 318

Details tab (Group Policy Management snap-in), 232

Device Manager, 39

DFS (Distributed File Systems), 247, 266

- folders
 - adding, 270-271
 - replication, 272-274
- installation, 267
- roots, 268-269

DFS Management snap-in, 269-271

dfscmd (Distributed File System)

- command, 7

DHCP (Dynamic Host

Configuration Protocol), 58

- BOOTP protocol, 354
- clients
 - configuration, 372
 - DHCPDISCOVER messages, 354
 - DHCPREQUEST messages, 355
- database backups, loading, 374
- direct-connect printer installation, 306

- installation, 355, 358

IP addresses

- activating scopes, 369
- assigning, 353-355
- creating reservations, 363-364
- creating scopes, 367-369
- exclusion ranges, 364-365
- leases, 365-366, 373
- stateless mode, 360
- superscopes, 370-371

scopes

- activating, 369
- configuration, 358-361
- creating reservations, 363-364
- creating, 367-369
- exclusion ranges, 364-365
- leases, 365-366, 373
- superscopes, 370-371

servers

- Active Directory authorization, 360
- adding, 373
- DHCPACK messages, 355
- DHCPOFFER messages, 354
- editing options, 371-372
- IPv6 addressing, 134
- troubleshooting, 375

DHCP Relay Agent, 423-424

DHCP snap-in, 362

- leases, viewing, 373
- New Reservation dialog box, 363-364

DHCP tab, WDS Properties dialog box, 82

DHCPACK messages, 355

DHCPDISCOVER messages, 354

DHCPOFFER messages, 354

DHCPREQUEST messages, 355

Diagnostics icon (Server Manager), 47

diagrams (network), creating, 55

dial-in connections, managing, 397-398

Dial-In tab

- Active Directory, Properties dialog box, 203
- Users and Computers snap-in, Properties dialog box, 160

differential backups, 108

digital certificates

- AD CS installation, 495-499
- Administrator certificates, 507
- CA, 494-495
 - auditing events, 502
 - Enterprise CA, 496
 - Root CA, 497
 - Standalone CA, 496
 - Subordinate CA, 497
- personal certificates, 506
- requesting, 504-507
 - failed requests, 509
 - pending requests, 509
 - revoked requests, 509-510
- servers, viewing properties of, 500

DNS (Domain Name Service)

- templates, 500, 504, 508
- User certificates, 507
- viewing, 508
- direct-connect printers, 304-308**
- directories (virtual), 530-531**
- Directory Browsing option (IIS Manager, Features view), 524**
- Directory Security tab (FTP Publishing Service, Properties dialog box), 533**
- Directory Service Restore Mode Administrator passwords, AD DS configuration, 148, 153**
- Directory Services tab, WDS Properties dialog box, 81**
- Disk Check Complete dialog box (Properties dialog box, Tools tab), 107**
- disk counters**
 - Current Disk Queue Length counters, 550
 - Disk Reads/sec counters, 550
 - Disk Writes/sec counters, 550
 - %Disk Time counters, 549
 - %Free Space counters, 550
- Disk Defragmenter utility (Properties dialog box, Tools tab), 107**
- Disk Management snap-in**
 - Details pane
 - Convert to Dynamic Disk dialog box, 95
 - New Raid-5 Volume Wizard, 103-104
 - New Spanned Volume Wizard, 97
 - Details pane, 91
 - Extend Volume Wizard, 98
 - Properties dialog box, 105-107
 - Shrink dialog box, 99
- Disk option (Reliability and Performance Monitor snap-in, Resource View pane), 541**
- disk quotas**
 - deleting, 254
 - editing, 254
 - file servers, 250-254
 - hard quotas, 251-253
 - soft quotas, 251-253
 - threshold notifications, 254
- Disk Reads/sec counters, 550**
- disk striping, 103-104**
- %Disk Time counters, 549**
- Disk Writes/sec counters, 550**
- diskpart, 296**
- Display tab (Remote Desktop Connection client), Terminal Services connections, 442**
- distribution groups, 170**
- DNS (Domain Name Service), 58**
 - Active Directory, AD DS, 332-334
 - caches, 331
 - client configuration, 345-346
 - DDNS, 328
 - distributed databases, 328
 - domains
 - Active Directory domains versus, 329
 - biz, 329
 - com, 329
 - country names, 329
 - edu, 329
 - gov, 329
 - info, 329
 - namespaces, 328-332
 - net, 329
 - org, 329
 - subdomains, 330
 - dynamic updates, 333, 338
 - FQDN, 327-328
 - installation, 334
 - IP addresses, resolving, 332
 - managing, 342-343
 - resolvers, 331
 - resource records
 - A, 342-344
 - CNAME, 343
 - creating, 344
 - HINFO, 343
 - MX, 343
 - NS, 343
 - PTR, 343
 - SOA, 343
 - SRV, 343
 - viewing, 342
 - WINS, 343
 - servers
 - cache-only servers, 346
 - configuration, 335-341
 - copying databases, 338
 - forward lookup zones, 336-339, 350
 - FQDN, 328
 - InterNIC, 328
 - monitoring, 347-348

DNS (Domain Name Service)

- preferred DNS servers, 331
 - reverse lookup zones, 339-341
 - testing, 347
 - troubleshooting, 347-348
 - viewing events of, 348
 - troubleshooting via nslookup tool, 349-350
- DNS snap-in**
 - Monitoring tab, 347
 - New Host dialog box, 344
 - New Zone Wizard
 - forward lookup zone creation, 336-339
 - reverse lookup zone creation, 340-341
 - Resource Record Type dialog box, 345
- DNS tab (Advanced TCP/IP Settings dialog box), 136**
- Do not respond to any client computer option (Windows Deployment Services Configuration Wizard), 76**
- Do Not Share This Printer option (Add Printer Wizard), 308**
- Do Not Show This Window at Logon check box (Initial Configuration Tasks window), 60**
- DOD (Department of Defense) model, 123**
- Domain Admins groups, 173**
- Domain Administrators, publishing shares, 263**
- domain containers. *See also* OU (Organizational Unit), 181**
- domain controllers**
 - functional mode, 171
 - RODC, 56
- Domain Controls (Read-Only), 8**
- domain functional levels**
 - raising, 180-181
 - Windows Server 2000 mode, 179
 - Windows Server 2003 mode, 179
 - Windows Server 2008 mode, 179
- domain groups, assigning share permission levels, 280**
- domain local groups (Active Directory), 171**
 - built-in groups, 175-176
 - memberships, 172
- Domain Name static mapping node type (WINS), 456**
- Domain profile (Windows Firewall with Advanced Security), 473**
- Domain Users groups, 173**
- domain-based DFS roots, 268**
- domains**
 - Active Directory, DNS domains versus, 329
 - AD DS
 - installation, 147
 - root domains, 149
 - child domains, 54, 142, 149-153
 - client computers, adding to, 195
 - Active Directory, 197-203
 - legacy operating systems, 196
 - network protocols, 196
 - standardizing hardware configurations, 196
 - Windows 2000 clients, 208
 - Windows Vista clients, 204-206
 - Windows XP clients, 206-207
 - creating, 55, 144
- DNS**
 - Active Directory domains versus, 329
 - biz, 329
 - com, 329
 - country names, 329
 - edu, 329
 - gov, 329
 - info, 329
 - namespaces, 328-332
 - net, 329
 - org, 329
 - subdomains, 330
 - domain controllers, creating, 55
 - forests, 54, 143-144
 - Global Catalog, 142
 - hierarchy of, 54
 - member servers, adding to, 210
 - parent domains, 54
 - root domains, 142, 149
 - top-level, 329
 - transitive trusts, 54
 - trees, 54
 - Active Directory, 142-143
 - child domains, 142

- creating, 144
 - forests, 143-144
 - root domains, 142
 - sharing resources, 143
 - trust relationships, 54
 - user accounts
 - adding users to, 156-159
 - setting logon hours, 161-162
 - setting properties in, 159-161
 - specifying computers for login, 162
 - user principal names, 156
 - Windows Server installation, 27
 - Domains and Trusts snap-in (AD DS), 154**
 - domains, 53
 - DVDs, Backup utility support, 109
 - DVD-ROM drives, Windows Server 2008 requirements, 17
 - dynamic databases, WINS, 449
 - dynamic disks
 - converting basic disks to, 95
 - partitions
 - cluster size, 94
 - creating, 92-94
 - deleting, 94
 - designating free space available in, 93
 - selecting file system for, 94
 - partitions, 89
 - volumes, 89
 - deleting, 98
 - error-checking, 106
 - extending, 98
 - mirror sets, 101-102
 - mirrored volumes, 96
 - RAID-5 volumes, 96, 103-104
 - shrinking, 99-100
 - spanned volumes, 96-97
 - striped volumes, 96
 - viewing properties of, 105
 - dynamic routing, 409, 417-418**
 - dynamic storage, 89**
 - dynamic updates, DNS, 333, 338**
- ## E
- EAP (Extensible Authentication Protocol), 387**
 - EAP-TLS method (EAP), 387**
 - Ease of Access Center window (Control Panel), 37**
 - Edit Anonymous Authentication Credentials dialog box (IIS Manager, Actions view), 527**
 - editing**
 - Active Directory sites, 188
 - DHCP server options, 371-372
 - disk quotas, 254
 - file screen policy templates, 259
 - rules (Windows Firewall), 477
 - scheduling tasks, 43
 - virtual directory permissions, 531
 - edu domain name (DNS domains), 329**
 - effective NTFS permissions, 285, 290**
 - Effective Permissions dialog box (Advanced Security Settings dialog box), 290**
 - EFS (Encrypting Files System), data encryption, 293**
 - Enable Shadow Copies dialog box (Volume Shadow Copy Service), 264**
 - Enable System Recovery check box (Backup snap-in), 112**
 - Enabled Protocols option (Web Site Defaults dialog box), 522**
 - encryption**
 - BitLocker Drive Encryption, 294-300
 - EFS, 293
 - Enrollment Agents tab (CA Properties dialog box), 503**
 - Enter the Object Names to Select box**
 - Active Directory Users and Computers snap-in, Members tab, 178
 - Select users, Computers, or Groups dialog box, 281, 288
 - Enterprise Administrators, publishing shares, 263**
 - Enterprise Admins groups, 174**
 - Enterprise CA (Certificate Authorities), 496**
 - Enterprise edition (Windows Server 2008), 11**
 - Environment tab**
 - Terminal Services Properties dialog box, 439

Environment tab

- Users and Computers snap-in, Properties dialog box, 160
 - Error icon (Event Viewer), 563**
 - Error Pages option (IIS Manager, Features view), 524**
 - error-checking utility (Properties dialog box, Tools tab), 106**
 - event traces, adding to data collector sets, 552**
 - Event Viewer, 561**
 - Application logs, 562
 - DNS server events, viewing, 348
 - Error icon, 563
 - Information icon, 563
 - log events
 - clearing, 565
 - finding information on, 564
 - saving, 565
 - viewing, 564
 - NAT, troubleshooting, 494
 - RAID, troubleshooting, 104
 - Security logs, 562
 - Setup logs, 562
 - System logs, 562-564
 - Warning icon, 563
 - WINS events, viewing, 462
 - events**
 - CA events, auditing, 502
 - DNS servers, viewing, 348
 - WINS events
 - logging, 453
 - viewing in Event Viewer, 462
 - Everyone group printer permissions, 322**
 - Exceptions tab (Windows Firewall Settings dialog box), 471**
 - exclusion ranges (IP addresses), DHCP, 364-365**
 - Exit Module tab (CA Properties dialog box), 503**
 - Experience tab (Remote Desktop Connection client), Terminal Services connections, 443**
 - Extend Volume Wizard, 98**
 - Extensions tab (CA Properties dialog box), 503**
 - External Connector licenses, 18**
 - Extinction Interval option (WINS snap-in, Intervals tab), 453**
 - Extinction timeout option (WINS snap-in, Intervals tab), 453**
- ## F
- failed digital certificate requests, 509**
 - Failure Audit icon (Event Viewer), 564**
 - failure icons (System Stability Charts), 560**
 - FAT32 file systems**
 - formatted disks, converting to NTFS, 286
 - hard drive formatting, 94
 - Windows Server 2008 support for, 21
 - Features icon (Server Manager), 47**
 - Features view (IIS Manager), 522**
 - Authentication option, 527
 - Compression option, 523-524
 - Default Document Page option, 524
 - Directory Browsing option, 524
 - Error Pages option, 524
 - Handler Mappings option, 525
 - HTTP Response Headers option, 525
 - MIME Types option, 525
 - Modules option, 525
 - Output Caching option, 525
 - SSL Settings option, 526
 - file permissions (NTFS)**
 - Full control, 284, 291
 - Modify, 284
 - Read and Execute, 284
 - Write, 284
 - file screen policy templates, editing, 259**
 - File Server Resource Manager, 247, 259-261**
 - file servers, 56**
 - configuration, 246-249
 - dedicated servers, 246
 - DFS, 266
 - adding folders, 270-271
 - associating shares with roots, 268
 - domain-based roots, 268
 - folder replication, 272-274
 - installation, 267
 - naming roots, 268
 - roots, 269

- disk quotas, 250-254
 - managing, 261
 - network shares
 - administrative shares, 256
 - creating, 255-260
 - open files, listing, 262
 - roles, assigning, 246-249
 - sessions, viewing, 261
 - Volume Shadow Copy Service, 264-265
 - File Services check box (Add Roles Wizard, Select Server Roles page), 246**
 - filtering**
 - printer views, 320
 - rules (Windows Firewall with Advanced Security), 476
 - Find feature (Users and Computers snap-in), 164**
 - firewalls**
 - client computers, allowing remote administration, 201
 - Windows Firewall, 10, 469
 - configuration, 470-472
 - connection security rules, 481-483
 - creating rules, 478-480
 - custom rules, 476
 - editing rules, 477
 - inbound rules, 475
 - outbound rules, 475
 - port rules, 476
 - predefined rules, 476
 - program rules, 475
 - Windows Firewall with Advanced Security
 - configuration, 472-474
 - connection security rules, 481-483
 - creating rules, 478-480
 - Domain profile, 473
 - filtering rules, 476
 - inbound rules, 476
 - New Connection Security Rule Wizard, 481-483
 - New Rule Wizard, 478-480
 - outbound rules, 476
 - Private profile, 473-474
 - Properties dialog box, 475
 - Public profile, 473-474
 - folders**
 - disk quotas, creating, 251
 - permissions (NTFS)
 - assigning, 286-287
 - Full control, 283, 291
 - List Folder Contents, 283
 - Modify, 283
 - Read and Execute, 283
 - Read, 283-284
 - Write, 283
 - forests, 143**
 - AD DS installation, 147
 - creating, 144
 - domains, 54
 - functional levels, 179
 - trees, 54
 - forward lookup zones (DNS), 336-339**
 - resource records, viewing, 342
 - testing, 350
 - FQDN (Fully Qualified Domain Name), 327-328**
 - %Free Space counters, 550**
 - fsutil tool, disk quotas, 250**
 - FTP (File Transfer Protocol), 124, 531-534**
 - FTP Publishing Service (IIS Manager), 532-534**
 - FTP Site tab (FTP Publishing Service, Properties dialog box), 533**
 - Full control permissions**
 - NTFS permissions, 283-284, 291
 - share permissions, 279
 - full mesh option (Replication Folder Wizard), 273**
 - functional levels**
 - domain
 - raising, 180-181
 - Windows Server 2000 mode, 179
 - Windows Server 2003 mode, 179
 - forest, 179
 - functional mode (domain controllers), 171**
- G**
- gateways, static routing, 416**
 - General tab**
 - Active Directory, Properties dialog box, 202

General tab

- Active Users and Computers snap-in, Properties dialog box, 182
- CA Properties dialog box, 501
- Remote Desktop Connection client, Terminal Services connections, 442
- Terminal Services Properties dialog box, 439
- Users and Computers snap-in, Properties dialog box, 160
- WDS Properties dialog box, 80
- Windows Firewall
 - Properties dialog box, 478
 - Settings dialog box, 471
- WINS snap-in, Properties dialog box, 452
- Global Catalog, 142-143**
- global groups (Active Directory), 171-172**
- gov domain name (DNS domains), 329**
- GPO (Group Policy Objects), 216, 404**
 - Audit policies, 228
 - backups, 220
 - configuration, 226-227
 - creating, 219-221
 - editing, 222, 225
 - enforcing, 231
 - Group Policy Management snap-in
 - Audit policies, 228
 - backing up via, 220
 - creating via, 219-221
 - editing via, 222, 225
 - importing via, 219
 - restoring via, 220
 - Group Policy Objects folder, creating via, 220-221
 - inheritance, 229-231
 - naming, 220
 - restoring, 220
 - testing, 233
 - viewing details of, 231-232
 - viewing, 230
- GPT (GUID Partition Table) drives, 90**
- graphs, Performance Monitor**
 - clearing in, 547
 - counters, deleting from, 546
- Group Policies, 4**
 - GPO, 216
 - Audit policies, 228
 - backups, 220
 - configuration, 226-227
 - creating, 219-221
 - editing, 222, 225
 - enforcing, 231
 - Group Policy Management snap-in, 219-222, 225, 228
 - Group Policy Objects folder, 220-221
 - inheritance, 229-231
 - naming, 220
 - restoring, 220
 - testing, 233
 - viewing details of, 231-232
 - viewing, 230
 - Group Policy Management snap-in, 216
 - Audit policies, 228
 - backing up GPO, 220
 - creating GPO, 219-221
 - Delegation tab, 232
 - Details tab, 232
 - editing GPO, 222, 225
 - Group Policy Modeling tool, 218
 - Group Policy Results tool, 218
 - importing GPO, 219
 - installation, 218
 - New GPO dialog box, 220-221
 - restoring GPO, 220
 - Scope tab, 232
 - Settings tab, 232
 - Group Policy Modeling tool, 218
 - Group Policy Objects Editor, 216, 225
 - Administrative Templates, 224
 - Audit policies, 228
 - Computer Configuration section, 222
 - Software Settings, 223
 - User Configuration section, 222
 - Windows Settings, 223
 - Group Policy Objects folder, creating GPO, 220-221
 - links (Delegation of Control Wizard), 190

Group Policy Results tool, 218

Group static mapping node type (WINS), 456

groups

- Active Directory, 169, 181
 - Account Operators, 175
 - adding users to, 177-178
 - Administrators, 175
 - Backup Operators, 175
 - built-in groups, 174-176
 - creating in, 176-177
 - default groups, 172-174
 - deleting from, 177
 - Domain Admins, 173
 - domain local groups, 171-172, 175-176
 - Domain Users, 173
 - Enterprise Admins, 174
 - global groups, 171-172
 - membership, 172
 - naming, 177
 - nesting, 172
 - Print Operators, 175
 - removing users from, 178
 - Schema Admins, 174
 - scope of, 170-172, 177
 - Server Operators, 175
 - universal groups, 170-172
 - Users, 175
- distribution, 170
- domain groups, assigning share permission levels, 280
- local user groups, 50-51, 171
- remediation servers, 240

- security, 170
- workgroups, creating, 212-213

Groups folder (Server Manager), 50-51

GUID (Globally Unique Identifiers)

- defining, 90
- GPT drives, 90
- prestage client computer accounts, Active Directory, 81

H

H node type (NetBIOS), 448

Handler Mappings option (IIS Manager, Features view), 525

hard drive management

- allocation unit size, 94
- backups
 - Backup snap-in, 110-115
 - Backup utility, 109-110
 - differential backups, 108
 - file markers, 107
 - incremental backups, 108
 - media/software for, 107
 - normal backups, 108
 - planning, 108-109
 - remote backups, 109
 - restoring files from, 113-114
 - scheduling, 115
 - system recovery, 112
 - volume shadow copies, 113

hard drive management

- basic disks, converting to dynamic disks, 95
- basic storage, 89
- Disk Management snap-in
 - Convert to Dynamic Disk dialog box, 95
 - Details pane, 91
 - Extend Volume Wizard, 98
 - New Raid-5 Volume Wizard, 103-104
 - New Spanned Volume Wizard, 97
 - Properties dialog box, 105-107
 - Shrink dialog box, 99
- dynamic disks, converting basic disks to, 95
- dynamic storage, 89
- FAT32 formatting, 94
- GPT drives, 90
- MBR drives, 90-91
- mirror sets, 101-102
- NTFS formatting, 94
- numbering drives, 92
- partitions
 - cluster size, 94
 - creating, 92-94
 - designating free space available in, 93
 - selecting file system for, 94
- quotas, 251-253
- RAID
 - levels of, 100
 - RAID 1 implementation, 101-102

hard drive management

- RAID 5 implementation, 102-104
 - support for, 100
 - troubleshooting, 104
 - stripe sets, creating, 103-104
 - VDS, 88-89
 - volumes
 - deleting, 98
 - error-checking, 106
 - extending, 98
 - mirror sets, 101-102
 - mirrored volumes, 96
 - RAID-5 volumes, 96, 103-104
 - shrinking, 99-100
 - spanned volumes, 96-97
 - striped volumes, 96
 - viewing properties of, 105
 - Windows Server 2008 requirements, 17
 - hardware**
 - compatibility lists, Windows Server 2008 installation, 17
 - requirements, Windows Server 2008 installation, 16-17
 - standardizing configurations, adding client computers to domains, 196
 - Hardware and Sound window (Control Panel), 36**
 - hash algorithms, CA, 497**
 - highlighting counters, Performance Monitor, 546**
 - HINFO (Host Information) resource records, DNS, 343**
 - Histogram view (Performance Monitor), 547**
 - Home Directory tab (FTP Publishing Service, Properties dialog box), 533**
 - host (A) records, DNS, 342-344**
 - host addresses, computing for IPv4 subnets, 130-131**
 - host ID, IPv4 addressing, 126**
 - host ranges, computing for IPv4 subnets, 131**
 - HTTP Response Headers option (IIS Manager, Features view), 525**
 - hub and spoke option (Replication Folder Wizard), 273**
- I**
- IANA (Internet Assigned Numbers Authority), IPv4 address classes, 490**
 - ICMP (Internet Control Message Protocol), 125**
 - Identification Changes dialog box, Member of Domain option, 208**
 - IIS 6.0, creating FTP sites, 532**
 - IIS 7.0 (Internet Information Service 7.0), 9**
 - administration tools, 514
 - configuration, 518
 - diagnostic capabilities of, 514
 - FTP sites, creating, 531, 534
 - installation, 515
 - modular architecture of, 514
 - new features of, 513-514
 - websites
 - adding, 519-521
 - authentication, 527
 - configuration features of, 522-526
 - logs, 528
 - setting defaults for, 521-522
 - virtual directories, 530-531
 - IIS (Internet Information Service) Manager, 517-518**
 - Actions view, Edit Anonymous Authentication Credentials dialog box, 527
 - Add Web Site dialog box, 519-520
 - Default Web Site option, 518
 - Features view, 522
 - Authentication option, 527
 - Compression option, 523-524
 - Default Document Page option, 524
 - Directory Browsing option, 524
 - Error Pages option, 524
 - Handler Mappings option, 525
 - HTTP Response Headers option, 525
 - MIME Types option, 525
 - Modules option, 525
 - Output Caching option, 525
 - SSL Settings option, 526

- FTP Publishing Service
 - installation, 532
 - Properties dialog box, 533-534
- Logging page, 529
- Virtual Directories page, Add Virtual Directory dialog box, 530
- Web Site Defaults dialog box, 522
- implementation plans (network), creating, 55**
- in-place upgrades, Windows Server 2008, 23**
- inbound rules**
 - Windows Firewall, 475
 - Windows Firewall with Advanced Security, 476
- incremental backups, 108**
- info domain name (DNS domains), 329**
- Information icon (Event Viewer), 563**
- Infrastructure Master, Windows Server 2008 upgrades, 20**
- inheritance**
 - GPO, 229-231
 - NTFS (NT File System) permissions, 285, 289
- Initial Configuration Tasks window, 6**
 - Active Directory Domain Services Installation Wizard, AD DS
 - child domain creation, 151
 - installation, 146
 - Add Features dialog box, 62
 - Add Roles Wizard, AD DS
 - child domain creation, 149-150
 - installation, 144-145
 - Skip This Page by Default check box, 61
 - Do Not Show This Window at Logon check box, 60
 - server roles
 - adding features to, 62
 - adding to servers, 60-61
 - installation, 63
 - selecting services for, 62-63
- install image files, WDS, 76, 79**
- Install Licenses Wizard, Terminal Services, 434-435**
- Installation Results page (Add Roles Wizard), 249**
- installing**
 - AD CS, 495-499
 - AD DS, 144-147
 - Backup utility, 109-110
 - BitLocker Drive Encryption, 297
 - client OS, WDS remote installation, 83-85
 - cores, 9
 - DFS, 267
 - DHCP Relay Agent, 423
 - DHCP, 355, 358
 - DNS, 334
 - features, 67
 - FTP Publishing Service (IIS Manager), 532
 - Group Policy Management snap-in, 218
 - IIS 7.0, 515
 - Network Policy and Access Services, 234-235, 381-382
 - network services, 58
 - NPS, 400-404
 - Print Services, 303, 311
 - printers
 - automatic installation, 38
 - direct-connect printers, 306-306
 - local printers, 304-305
 - plug-and-play printers, 305
 - RRAS, 410
 - server cores, 17, 25-27
 - server roles, 58, 63
 - Terminal Services, 429-432
 - uninstallation programs, 40-41
 - WDS, 72-73, 80-82
 - Windows Server 2008
 - clean installation, 21-23
 - domain installation, 27
 - hardware compatibility lists, 17
 - hardware requirements, 16-17
 - multiple installation, 25
 - planning for, 15-16
 - processor requirements, 18
 - remote installation, 82
 - server core installation, 17, 25-27

installing

- server licensing, 18
- upgrading versus, 19
- virtual servers, 17
- volume creation, 295-296
- workgroup installation, 27
- Windows Vista, remote installation, 82
- WINS, 449-450
- Instances of selected object option (Add Counters dialog box), 545**
- Inter-Site Transports folder (Active Directory Sites and Services snap-in), 187**
- Internet Group static mapping node type (WINS), 456**
- Internet Information Server, 508**
- Internet Printing service, 310**
- Internet protocols suite. *See* TCP/IP**
- InterNIC, DNS servers, 328**
- Interrupts/sec counters, 549**
- Intervals tab (WINS snap-in, Properties dialog box), 452-453**
- intranets, 57**
- IP (Internet Protocol), 125**
- IP address dialog box (Add Web Site dialog box), 520**
- IP Address Range screen (New Scope Wizard), 367**
- IP addresses**
 - assigning via DHCP, 353-355
 - DHCP Relay Agent, 423
 - direct-connect printer installation, 306
 - DNS, 327, 332
 - exclusion ranges, 364-365
 - IPv4 address classes, 490
 - leases, DHCP, 365-366, 373
 - network interfaces
 - assigning to, 414
 - configuration, 413-414
 - private addresses, NAT, 490
 - reservations, 363-364
 - scopes
 - activating, 369
 - configuration, 358-361
 - creating, 367-369
 - DHCP, 358-361
 - superscopes, 370-371
 - stateless mode, DHCP, 360
 - static addresses, WINS installation, 449
- IP masquerading, 490**
- IP ports, direct-connect printer installation, 306**
- IP routing**
 - configuration
 - dynamic routing, 417-418
 - static routing, 415-416
 - monitoring, 421-422
- IP Settings tab (Advanced TCP/IP Settings dialog box), 136**
- ipconfig command, 137, 375**
- ipconfig/all command, 364**
- ipconfig/displaydns command-line utility, viewing DNS caches, 331**
- IPSec (IP Security Protocol), 484-487**
- IPSec Settings tab (Windows Firewall with Advanced Security Properties dialog box), 475, 484**
- IPv4 addressing (Internet Protocol version 4), 125**
 - bits, borrowing, 129
 - Class A addresses, 126-128, 131
 - Class B addresses, 126-128
 - Class C addresses, 126-128, 131
 - Class D addresses, 126
 - Class E addresses, 126
 - configuration, 135
 - ipconfig command, 137
 - ping command, 138
 - development of, 127
 - host addresses, computing, 130-131
 - host ID, 126
 - host ranges, computing, 131
 - IPv6 addressing versus, 132-133
 - network ID, 126
 - subnet masks, 130
 - subnetting, 127-129
- IPv6 addressing (Internet Protocol version 6), 9**
 - configuration, 135
 - ipconfig command, 137
 - ping command, 138
 - DHCP servers, 134
 - IPv4 addressing versus, 132-133
 - stateless auto-configuration, 133

- static addresses, 134
- subnetting, 134
- IPX/SPX (Internetwork Packet Exchange/Sequenced Packet Exchange), 122**
- isolation rules (Windows Firewall), 481

J - K - L

- Job pane (Print Management snap-in), 318
- L2TP (Layer 2 Tunneling Protocol), 393**
- LAN routing, RRAS, 412**
- leases (IP addresses), DHCP, 365-366, 373
- legacy operating systems, adding client computers to domains, 196
- License Server Discovery Mode option (Terminal Server), 438
- Licensing Diagnosis tool (Terminal Services Configuration snap-in), 435
- licensing servers, 18
- links
 - Active Directory sites, 187-188
 - Group Policy, 190
- List Folder Contents NTFS permissions, folder permissions, 283
- LMHOSTS files, 447
- load balancing, WINS, 454

- Local Area Connection Properties dialog box**
 - Manage Network Connections section, 345
 - Network and Sharing Center, 209
 - Network Connections window, 568
- local caches, DNS resolvers, 331
- local groups, 171
- local printers, 304-305
- local resources, permissions, 171
- Local Resources tab (Remote Desktop Connection client), Terminal Services connections, 443**
- local user accounts, 155
 - computers, adding to, 49
 - creating, 48
 - groups, adding to, 50-51
- locally grouping objects, 181
- Location tab (Active Directory, Properties dialog box), 203**
- Lock command, 33
- Log Detailed Events to Windows Event Log option (WINS snap-in, Properties dialog box), 461**
- log events (Event Viewer)
 - clearing, 565
 - DNS servers, viewing in, 348
 - finding information on, 564
 - saving, 565
 - viewing, 564
- Logging page (IIS Manager), 529**
- logon hours, setting in domain user accounts, 161-162

- Logon Settings tab (Terminal Services Properties dialog box), 439**
- logs
 - websites, 528
 - WINS event logs, 453
- Longhorn, Windows Server development, 3**
- loops (routing), 421
- LPD (Line Printer Daemon) Service, 310**

M

- M node type (NetBIOS), 448**
- MAC addresses**
 - DHCPDISCOVER messages, 354
 - hardware addresses, finding, 364
 - IP addresses, stateless mode, 360
- Manage Documents group printer permissions, 323**
- Manage Network Connections section (Network and Sharing Center), Local Area Connection Properties dialog box, 345**
- Manage Printers group printer permissions, 323**
- Managed By tab**
 - Active Directory, Properties dialog box, 203
 - Active Users and Computers snap-in, Properties dialog box, 182

MBR (Master Boot Record) drives

MBR (Master Boot Record) drives, 90-91

MD5-Challenge method (EAP), 387

Member of Domain option

Computer Name Changes dialog box, 207

Identification Changes dialog box, 208

Member Of tab

Active Directory, Properties dialog box, 203

Users and Computers snap-in, Properties dialog box, 160

member servers

domains, adding to, 210
standalone servers, IIS 7.0 installation, 515

Members tab (Active Directory Users and Computers snap-in, Properties dialog box), 177-178

memberships, Active Directory groups, 172

memory

virtual memory, 44-45
Windows Server 2008 requirements, 17

memory counters, 550

Memory option (Reliability and Performance Monitor snap-in, Resource View pane), 541

Messages tab (FTP Publishing Service, Properties dialog box), 533

messaging servers, 57

metrics, static routing, 416

MIME Types option (IIS Manager, Features view), 525

mirror sets

breaking, 102

creating, 101

mirrored volumes, 96

modem ports, RRAS configurations, 385

Modify NTFS permissions, 283-284

Modules option (IIS Manager, Features view), 525

Monitoring tab (DNS snap-in), 347

monitors, Windows Server 2008 requirements, 17

moving

computer accounts between domains, 200

NTFS (NT File System) permissions, 285

MS-CHAP (Microsoft Challenge Handshake Authentication Protocol), 388

MS-CHAP v2 (Microsoft Challenge Handshake Authentication Protocol Versions 2), 388

multihomed computers, 408

Multihomed static mapping node type (WINS), 456

multiple Windows Server installation, 25

MX (Mail Exchanger) resource records, DNS, 343

N**naming**

Active Directory groups, 177

CA servers, 498

DFS roots, 268

DNS domains, 328-332

GPO, 220

NetBIOS names, 445

resolution, 446-447

viewing caches, 447

OU, 181

RAID-5 volumes, 104

spanned volumes, 98

stripe sets, 104

NAP (Network Access Protection), 233

enabling, 241

NPS, configuration for, 380

NAT (Network Address Translation), 59

configuration, 491-493

interfaces, creating, 491

private IP addresses, 490

troubleshooting, 494

NAT Properties dialog box (RRAS snap-in), 492

NBTSTAT command, 447, 462-463

nesting Active Directory groups, 172

net domain name (DNS domains), 329

NetBIOS (Network Basic Input/Output System), 445

broadcasts, 446-447

LMHOSTS files, 447

- names, 446-447
- node types, 448
- resource types, 456
- WINS server deployment, 448-449
- NETLOGON (administrative share), 256**
- netstat command, 138**
- Network Adapter tab (Terminal Services Properties dialog box), 439**
- Network and Internet window (Control Panel), 35**
- Network and Sharing Center, 209, 566**
 - Manage Network Connections section, Local Area Connection Properties dialog box, 345
 - map of, viewing, 567
 - Network Connections window, 568
 - Sharing and Discovery settings, 568
- network cards, direct-connect printer installation, 306**
- network connections, checking, 566-568**
- Network Connections window (Network and Sharing Center), 568**
- Network Device Enrollment service, 496**
- network diagrams, creating, 55**
- network ID, IPv4 addressing, 126**
- Network Identification Wizard, 207**
- network implementation plans, creating, 55**
- network interfaces, assigning IP addresses to, 414**
- Network layer (OSI model), 123**
- Network Level Authentication, 430**
- Network option (Reliability and Performance Monitor snap-in, Resource View pane), 541**
- Network Policy and Access Services**
 - Add Roles Wizard, 381-382
 - installation, 381-382
 - NPS
 - installation, 400
 - NAP configurations, 380
 - server configuration, 401-404
 - VPN authentication, 401-402
 - RRAS
 - authentication configuration, 389-390
 - authentication protocols, 387-389
 - configuration, 383-385
 - dial-in connections management, 397-398
 - modem port configurations, 385
 - remote access client configurations, 390-392
 - Routing and Remote Access Server Setup Wizard, 383-385
 - unauthenticated access, 389
 - VPN connections management, 397-398
- VPN, 380, 392
 - client configuration, 395-397
 - connections management, 397-398
 - L2TP, 393
 - NPS servers, 401-402
 - ports, 394-395
 - PPTP, 393
 - server creation, 393
 - SSTP, 393
- Network Policy and Access Services role, 233**
 - Add Role Services Wizard, 412
 - installation, 234-235
- Network Policy Server, 233**
 - NAP, enabling, 241
 - remediation servers, 239-241
 - WSHA, 237
 - WSHV, 236-239
- Network Printer Installation Wizard, 315**
- network protocols**
 - client computers, adding to domains, 196
 - development of, 121
 - IPv4 addressing, 125
 - Class A addresses, 126-128, 131
 - Class B addresses, 126-128
 - Class C addresses, 126-128, 131

network protocols

- Class D addresses, 126
- Class E addresses, 126
- computing host addresses, 130-131
- computing host ranges, 131
- configuration, 135
- development of, 127
- host ID, 126
- ipconfig command, 137
- IPv6 addressing versus, 132-133
- network ID, 126
- ping command, 138
- subnet masks, 127, 130
- subnetting, 127-129
- IPv6 addressing
 - configuration, 135
 - DHCP servers, 134
 - ipconfig command, 137
 - IPv4 addressing versus, 132-133
 - ping command, 138
 - stateless auto-configuration, 133
 - static addresses, 134
 - subnetting, 134
- IPX/SPX, 122
- OSI model, 122-125
- TCP/IP, 122-123
 - IPv4. **See** individual entry
 - IPv6. **See** individual entry
 - netstat command, 138
 - OSI model mappings, 124-125
- network protocols, 121**
- network routing**
 - dynamic routing, 409, 417-418
 - IP routing
 - dynamic routing, 417-418
 - monitoring, 421-422
 - static routing, 415-416
 - LAN routing, 412
 - loops, 421
 - network interfaces
 - configuration, 413-414
 - IP address assignments, 414
 - RIP, 417
 - interface configuration, 418-421
 - interface security, 420
 - neighbor communication, 420
 - split-horizon processing, 421
 - RRAS
 - enabling, 411
 - installation, 410
 - IP routing configuration, 415-418
 - LAN routing, 412
 - monitoring IP routing, 421-422
 - network interface configuration, 413-414
 - static routing, 409, 415-416
- network routing, 408**
- network services**
 - DHCP, 58
 - DNS, 58
 - installation, 58
 - NAT, 59
 - Remote Access, 59
 - Routing, 59
 - Terminal Services, 59
 - WINS, 58
- Network Settings tab, WDS Properties dialog box, 82**
- Network Setup Wizard, 213**
- network shares**
 - administrative shares, 256
 - creating, 255-260
 - DFS roots, associating with, 268
 - publishing, Active Directory, 262-263
 - recovering, 264
 - Volume Shadow Copy Service, 264-265
- networks**
 - Active Directory groups, 171
 - printers, 303-304, 315-316
- New Address Translation Properties dialog box (RRAS snap-in), 491**
- New Connection Security Rule Wizard (Windows Firewall with Advanced Security snap-in), 481-483**
- New Folder option (DFS Management snap-in), 270-271**
- New GPO dialog box (Group Policy Management snap-in), 220-221**
- New Group dialog box (Groups folder), 51**

- New Host dialog box (DNS snap-in), 344
 - New Interface for IPNAT dialog box (RRAS snap-in), 491
 - New Interface for RIP dialog box (RRAS), 418
 - New Object Organizational Unit dialog box (Active Directory Users and Computers snap-in), 181
 - New Object-Group dialog box (Active Directory Users and Computers snap-in), 176
 - New Object-Computer dialog box (Active Directory Users and Computers snap-in)
 - Computer Name dialog box, 198
 - Select User or Group dialog box, 199
 - New Object-Site dialog box (Active Directory Sites and Services snap-in), 185
 - New Object-Site Link dialog box (Active Directory Sites and Services snap-in), 187-188
 - New Object-Subnet dialog box (Active Directory Sites and Services snap-in, Subnets folder), 185
 - New Printer Filter Wizard, 320
 - New Raid-5 Volume Wizard, 103-104
 - New Replication Partner dialog box (WINS snap-in), 454
 - New Reservation dialog box (DHCP snap-in), 363-364
 - New Routing Protocol dialog box (RRAS), 417, 423
 - New Rule Wizard (Windows Firewall with Advanced Security snap-in), 478-480
 - New Scope Wizard, 367-371
 - New Spanned Volume Wizard, 97
 - New User dialog box (Server Manager, Actions pane), 49
 - New Zone Wizard
 - forward lookup zone creation, 336-339
 - reverse lookup zone creation, 340-341
 - NFS (Network File System), services, 247
 - No Access share permissions, 280
 - no topology option (Replication Folder Wizard), 273
 - node pane (Server Manager), Roles node, 64
 - normal backups, 108
 - NPS (Network Policy Server)
 - installation, 400
 - NAP configuration, 380
 - server configuration, 401-404
 - VPN authentication, 401-402
 - NS (Name Server) resource records, DNS, 343
 - Nslookup noninteractive mode, 349
 - nslookup troubleshooting tool, DNS, 349-350
 - NTFS (NT File System)
 - FAT32 formatted disk conversion to, 286
 - file server configuration, 246
 - hard drive formatting, 94
 - IIS 7.0 installation, 515
 - permissions, 282
 - ACL, 282
 - Administrator control of, 291
 - allowing/denying, 284-285
 - assigning, 285-287
 - copying, 285
 - effective permissions, 285, 290
 - file permissions, 283-284, 291
 - folder permissions, 283-287, 291
 - Full Control, 284, 291
 - group creation, 290
 - inheritance, 285, 289
 - List Folder Contents, 283
 - Modify, 283-284
 - moving, 285
 - overriding, 285
 - ownership of, 291
 - Read, 283-284
 - Read and Execute, 283-284
 - share permissions, mixing with, 292
 - Write, 283-284
 - Windows Server 2008 support for, 21
- numbering**
- hard drives, 92
 - partitions, 92

Object Name box (Select Users, Computers, or Groups dialog box)

O

Object Name box (Select Users, Computers, or Groups dialog box), 190

Object tab (Advanced Features command), 183

objects

Active Directory, 142, 162, 262

multiple objects, selecting, 163

queries, creating, 164-165

searching, 164

DEFAULTIPSITELINK, 185

grouping locally, 181

Online Responder, 496

Operating System tab (Active Directory, Properties dialog box), 202

optimizing

paging files, 45

virtual memory, 45

org domain name (DNS domains), 329

Organization tab (Users and Computers snap-in, Properties dialog box), 160

OS (Operating Systems), adding client computers to domains in legacy systems, 196

OSI (Open Systems Interconnect) model, 122-125

OSPF (Open Shortest Path First), 125

OU (Organizational Unit)

creating, 181-183

delegation, 190

naming, 181

properties, selecting, 182-183

outbound rules

Windows Firewall, 475

Windows Firewall with Advanced Security, 476

Output Caching option (IIS Manager, Features view), 525

P

P node type (NetBIOS), 448

Pages/Sec counters, 550

paging files

configuration settings of, 45

optimizing settings, 45

viewing settings of, 44

PAP (Password Authentication Protocol), 389

parent domains, 54

partitions, 89

cluster size, 94

creating, 92-94

deleting, 94

designating free space available in, 93

numbering, 92

selecting file system for, 94

passwords

Account Is Disabled check box (Active Directory), 158

Directory Service Restore Mode Administrator passwords, AD DS configuration, 148, 153

member servers, adding to domains, 211

Password Never Expires check box (Active Directory), 158

User Cannot Change Password check box (Active Directory), 158

User Must Change Password at Next Logon check box (Active Directory), 158

Windows XP clients, adding to domains, 207

pausing print jobs, 318

peer-to-peer networks, resource sharing, 54

pending digital certificate requests, 509

per seat licensing mode, 18

per server licensing mode, 18

Perform automatic testing at the following Interval check box (DNS snap-in, Monitoring tab), 348

performance

feature concerns, 60

server role concerns, 60

shared printers, 304

test servers, 60

WINS, 454, 461

performance counters, 549

Performance Monitor, 538

Add Counters dialog box, 544-545

PPTP (Point-to-Point Tunneling Protocol)

- counters, 543
 - adding, 545-546
 - deleting from graphs, 546
 - disk counters, 549-550
 - highlighting, 546
 - memory counters, 550
 - performance counters, 549
 - viewing in graphs, 546
- Create New Data Collector Set Wizard, 551, 554-555
- data collector sets
 - adding event traces to, 552
 - adding/removing, 554
 - Basic templates, 553
 - configuration, 556
 - creating, 551-556
 - saving templates, 556
 - scheduling, 556
 - starting, 552
 - stop conditions, 557
 - System Diagnostics templates, 553
 - viewing reports, 558-559
- graphs, 546-547
- Histogram view, 547
- remote performance monitoring, 546
- Report view, 548
- permissions**
 - local resources, 171
 - NTFS
 - ACL, 282
 - Administrator control of, 291
 - allowing/denying, 284-285
 - assigning, 285-287
 - copying, 285
 - effective permissions, 285, 290
 - file permissions, 284
 - folder permissions, 283
 - group creation, 290
 - inheritance, 285, 289
 - mixing with share permissions, 292
 - moving, 285
 - overriding, 285
 - ownership of, 291
 - printers, 322-323
 - security groups, 170
 - share permissions
 - allowing/denying, 279
 - assigning, 280-282
 - Change, 279
 - domain group assignments, 280
 - Full Control, 279
 - managing via Computer folder, 280
 - mixing with NTFS permissions, 292
 - No Access, 280
 - Read Only, 278
 - Read, 279
 - viewing, 278
 - universal groups, 170
 - virtual directory permissions, editing, 531
- Permissions dialog box**
 - Advanced Security Settings dialog box, 289
 - Share and Storage Management snap-in, 278, 287
- personal certificates (digital), 506**
- Physical layer (OSI model), 123**
- Physical Path Credentials Logon Type option (Web Site Defaults dialog box), 522**
- Physical Path Credentials option (Web Site Defaults dialog box), 522**
- Physical Path dialog box (Add Web Site dialog box), 520**
- ping command, 138**
 - DHCP troubleshooting, 375
 - IP routing, monitoring, 422
- plug-and-play printer installation, 305**
- policies, See Audit policies; Group Policies**
- Policy Module tab (CA Properties dialog box), 501**
- Port dialog box (Add Web Site dialog box), 520**
- ports**
 - IP direct-connect printer installation, 306
 - modem ports, RRAS configurations, 385
 - rules (Windows Firewall), 476
 - VPN ports, 394-395
- PowerShell, 8**
- PPTP (Point-to-Point Tunneling Protocol), 393**

prestige client computer accounts, Active Directory

- prestige client computer
 - accounts, Active Directory, 81
- predefined groups, 172-174
- predefined rules (Windows Firewall), 476
- Preferences dialog box (Printers window), 38
- preferred DNS servers, 331
- Presentation layer (OSI model), 123
- primary zones (forward lookup zones), 337-338
- Print a Test Page option (Add Printer Wizard), 309
- print jobs, 318-319
- Print Management snap-in, 8, 312
 - Add/Remove Servers dialog box, 314-315
 - All Drivers filter, 320
 - All Printers filter, 320
 - Details pane, 318
 - Job pane, 318
 - Network Printer Installation Wizard, 315
 - New Printer Filter Wizard, 320
 - print servers, adding to, 314-315
 - Printers Not Ready filter, 320
 - Printers with Jobs filter, 320
 - Properties dialog box, 319
- Print Operators groups, 175, 322
- Print printer permissions, 322
- print servers, 56, 310
 - network printers, adding to, 315-316
 - Print Management snap-in, adding to, 314-315
- Print Services installation, 303, 311
- Print Services role (Server Manager), 312
- PRINT\$ (administrative share), 256
- printers
 - Active Directory, adding to, 317
 - auditing access, 324
 - direct-connect printers, 304-308
 - filters, viewing through, 320
 - installation, 38
 - local printers, 304-305
 - networking, 303-304, 315-316
 - permissions, 322-323
 - plug-and-play installation, 305
 - print job management, 319
 - canceling jobs, 318
 - pausing jobs, 318
 - viewing jobs, 318
 - print servers, 56, 310
 - adding network printers to, 315-316
 - adding to Print Management snap-in, 314-315
 - Print Services installation, 311
 - remote printers, 304
 - settings, viewing, 38
 - shared printers, 304, 309
- Printers Not Ready filter (Print Management snap-in), 320
- Printers window (Control panel)
 - installed printers, viewing, 305
 - Preferences dialog box, 38
 - printer settings, viewing, 38
- Printers with Jobs filter (Print Management snap-in), 320
- private IP addresses, NAT, 490
- Private profile (Windows Firewall with Advanced Security), 473-474
- Processor Queue Length counters, 549
- %Processor Time counters, 549
- processors, Windows Server 2008
 - installation, 18
 - requirements, 17
- Profile tab (Users and Computers snap-in, Properties dialog box), 160
- program rules (Windows Firewall), 475
- Programs and Services tab (Windows Firewall Properties dialog box), 478
- Programs tab (Remote Desktop Connection client, Terminal Services connections), 443
- Programs window (Control Panel), 36, 40-41
- Progress screen (Add Feature Wizard), 68
- Properties dialog box, 310
 - Active Directory
 - Delegation tab, 203
 - Dial-In tab, 203

Quota Properties dialog box (Create Quota dialog box)

- General tab, 202
- Location tab, 203
- Managed By tab, 203
- Member Of tab, 203
- Operating System tab, 202
- Active Directory Sites and Services snap-in, Replicate Every spin box, 188
- Active Directory Users and Computers snap-in
 - Account tab, 160-161
 - COM+ tab, 161, 182
 - creating OU, 182
 - Dial-In tab, 160
 - Environment tab, 160
 - General tab, 160, 182
 - Managed By tab, 182
 - Member Of tab, 160
 - Members tab, 177-178
 - Organization tab, 160
 - Profile tab, 160
 - Sessions tab, 160
 - Telephones tab, 160
 - Terminal Services Profile tab, 160
- Device Manager, 39
- FTP Publishing Service, 533-534
- Groups folder, 50
- Print Management snap-in, 319
- Share This Printer check box, 309
- Terminal Services, 438-439
- Tools tab, 105
- Backup utility, 107
- Check Disk dialog box, 107
- Disk Check Complete dialog box, 107
- Disk Defragmenter utility, 107
- error-checking utility, 106
- WDS
 - Advanced tab, 82
 - Boot tab, 81
 - Client tab, 82
 - DHCP tab, 82
 - Directory Services tab, 81
 - General tab, 80
 - Network Settings tab, 82
 - PXE Response Settings tab, 80
- Windows Firewall, 478
- Windows Firewall with Advanced Security, 475
- WINS snap-in
 - Advanced tab, 453
 - Database Verification tab, 453
 - Default Backup Path dialog box, 458
 - General tab, 452
 - Intervals tab, 452-453
 - Log Detailed Events to Windows Event Log option, 461
- protocol stacks, 121**
 - IPX/SPX, 122
 - TCP/IP, 122-123
 - IPv4. **See** individual entry
 - IPv6. **See** individual entry
 - netstat command, 138
 - OSI model mappings, 124-125
- Protocols and Ports tab (Windows Firewall Properties dialog box), 478**
- Provision a Shared Folder Wizard, 257-260**
- PTR (Pointer) resource records, DNS, 343**
- public folders, 56**
- public key infrastructure, 494**
- Public profile (Windows Firewall with Advanced Security), 473-474**
- PXE Response Settings tab, WDS Properties dialog box, 80**

Q - R**queries**

- Active Directory objects, creating, 164-165
- recursive queries, DNS server tests, 347
- simple queries, DNS server tests, 347

quick access icons (Start menu), 32**Quick Launch toolbar, launching Server Manager, 46****Quota Properties dialog box (Create Quota dialog box), 252**

RADIUS (Remote Authentication Dial-In User Service)

- RADIUS (Remote Authentication Dial-In User Service), 399-404**
- RAID (Redundant Array of Independent Disks)**
 - levels of, 100
 - RAID 1 volumes, 101-102
 - RAID 5 volumes, 96, 102-104
 - support for, 100
 - troubleshooting, 104
- Raise Domain Functional Level dialog box (Active Directory Domains and Trusts snap-in), 180-181**
- RAM (Random Access Memory)**
 - memory counters, 550
 - Windows Server 2008 requirements, 17
- Read and Execute NTFS permissions, 283-284**
- Read NTFS permissions, 283-284**
- Read Only share permission, 278**
- Read permissions, share permissions, 279**
- Read-Only Domain Controls, 8**
- recently used programs, accessing via Start menu, 32**
- recovering shares, 264**
- Recovery Agents tab (CA Properties dialog box), 504**
- Recovery Wizard, 113-114**
- recursive queries, DNS server tests, 347**
- registering WINS servers, viewing active registrations in, 457**
- Reliability and Performance Monitor snap-in, 10, 542**
 - Performance Monitor, 538, 543
 - Add Counters dialog box, 544-545
 - Create New Data Collector Set Wizard, 551, 554-555
 - data collector sets, 551-559
 - deleting counters from graphs, 546
 - disk counters, 549-550
 - highlighting counters in, 546
 - Histogram view, 547
 - memory counters, 550
 - performance counters, 549
 - remote performance monitoring, 546
 - Report view, 548
 - viewing counters in graphs, 546
- Reliability Monitor, 538, 543, 560**
- Resource View pane, 539-541**
- WINS**
 - monitoring performance, 461
 - settings of, 454
- remediation servers, 239-241**
- remote access**
 - GPO, 404
 - Network Policy and Access Services
 - Add Roles Wizard, 381-382
 - installation, 381-382
 - NPS, 380, 400-404
 - RRAS authentication configuration, 389-390
 - RRAS authentication protocols, 387-389
 - RRAS configuration, 383-385
 - RRAS dial-in connections management, 397-398
 - RRAS modem port configuration, 385
 - RRAS remote access client configurations, 390-392
 - RRAS VPN connections management, 397-398
 - unauthenticated RRAS access, 389
 - VPN, 380, 392-398, 401-402
 - RADIUS, 399-404
 - remote access client configuration, 390-392
- Remote Access, 59**
- remote administration, computer accounts, 201**
- remote applications, Terminal Services integration, 428**
- remote backups, 109**
- Remote Control tab (Terminal Services Properties dialog box), 439**
- Remote Desktop Connection client, Terminal Services connections, 442-443**
- remote installation**
 - client OS, 83-85

- WDS, 80-85
- Windows Server, 82
- Windows Vista, 82
- remote performance monitoring, 546
- remote printers, 304
- remote procedure calls, site replication, 188
- RemotelyInstall folder (Windows Deployment Services Configuration Wizard), 75
- Remove Features Wizard (Server Manager), 68
- Remove Roles Wizard (Server Manager), 66
- removing
 - computer accounts, 200
 - data collector sets, 554
 - users from groups, 178
- Renew interval option (WINS snap-in, Intervals tab), 453
- Replicate Deletion of the Record to Other Servers (Tombstone) option (Active Registrations Folder), 458
- Replicate Every spin box (Active Directory Sites and Services snap-in, Properties dialog box), 188
- replication
 - Active Directory sites, 188
 - DFS folders, 272-274
- Replication Delay messages, 274
- Replication Folder Wizard, 272-274
- replication partners, WINS, 452-455
- Report Options page (Add Roles Wizard), 249
- Report view (Performance Monitor), 548
- reports (data collector sets), viewing, 558-559
- Request authentication for inbound and outbound connections option (New Connection Security Rule Wizard), 482
- requesting digital certificates, 504-507
 - failed requests, 509
 - pending requests, 509
 - revoked requests, 509-510
- Require authentication for inbound and outbound connections option (New Connection Security Rule Wizard), 482
- reservations (IP addresses), DHCP, 363-364
- resolvers (DNS), 331
- Resource Record Type dialog box (DNS snap-in), 345
- resource records (DNS), 342-344
- resource sharing
 - peer-to-peer networks, 54
 - trees, Global Catalog, 143
- resource types, NetBIOS, 456
- Resource View pane (Reliability and Performance Monitor snap-in), 539-541
- Respond only to known clients option (Windows Deployment Services Configuration Wizard), 76
- restoring
 - files from backups, 113-114
 - GPO, 220
 - WINS databases, 459
- reverse lookup zones (DNS), 339-341
- revoked digital certificate requests, 509-510
- RIP (Routing Information Protocol), 125, 417
 - interfaces
 - configuration, 418-421
 - neighbor communication, 420
 - security, 420
 - split-horizon processing, 421
- RIS (Remote Installation Services), 9, 71
- RODC (Read-Only Domain Controllers), 56
- Roles icon (Server Manager), 46
- Roles node (Server Manager, node pane), 64
- Root CA (Certificate Authorities), 497
- root domains, 142, 149
- roots (DFS), 268-269
- route command, static routing, 417
- routing, 59
 - dedicated routers, 408
 - dynamic routing, 409, 417-418
 - IP routing
 - configuring, 415-418
 - monitoring, 421-422

routing

- LAN routing, 412
- loops, 421
- network interfaces, 413-414
- RIP, 417-421
- RRAS
 - enabling, 411
 - installation, 410
 - IP routing configuration, 415-418
 - LAN routing, 412
 - monitoring IP routing, 421-422
 - network interface configuration, 413-414
 - static routing, 409, 415-416
- Routing and Remote Access Server Setup Wizard, 383-385, 393, 411**
- RRAS (Routing and Remote Access Server)**
 - authentication
 - CHAP, 388
 - configuration, 389-390
 - EAP, 387
 - PAP, 389
 - SPAP, 388
 - unauthenticated access, 389
 - configuration, 383-385
 - dial-in connections management, 397-398
 - dynamic routing, 409, 417-418
 - enabling, 411
 - installation, 410
- IP routing
 - configuration, 415-418
 - monitoring, 421-422
- LAN routing, 412
- modem port configurations, 385
- NAT configuration, 491-493
- NAT Properties dialog box, 492
- network interface configuration, 413-414
- New Address Translation Properties dialog box, 491
- New Interface for IPNAT dialog box, 491
- New Interface for RIP dialog box, 418
- New Routing Protocol dialog box, 417, 423
- remote access client configuration, 390-392
- RIP, 417
 - interface configuration, 418-421
 - interface security, 420
 - neighbor communication, 420
 - split-horizon processing, 421
- Routing and Remote Access Server Setup Wizard, 383-385
- static routing, 409, 415-416
- VPN connections management, 397-398

rules

- Windows Firewall
 - connection security rules, 481-483
 - creating, 478-480
 - custom rules, 476
 - editing, 477
 - inbound rules, 475
 - outbound rules, 475
 - port rules, 476
 - predefined rules, 476
 - program rules, 475
- Windows Firewall with Advanced Security
 - connection security rules, 481-483
 - creating, 478-480
 - filtering, 476
 - inbound rules, 476
 - outbound rules, 476

Run Script check box (New Printer Filter Wizard), 322

S

Save Custom Properties as a Template dialog box (Create Quota dialog box), 254

saving

- data collector set templates, 556
- event logs (Event Viewer), 565

- scheduling**
 - backups, 115
 - data collector sets, 556
 - Shadow Copy servers, 264-265
 - tasks, 41
 - creating, 42
 - editing parameters of, 43
 - viewing tasks, 43
- Scheduling Wizard (Backup utility), 109**
- Schema Admins groups, 174**
- Schema Master, Windows Server 2008 upgrades, 20**
- scope**
 - Active Directory, 172, 177
 - domain local groups, 171
 - global groups, 171
 - universal groups, 170-171
 - IP addresses
 - activating, 369
 - creating, 367-369
 - DHCP, 358-361
 - exclusion ranges, 364-365
 - leases, 365-366, 373
 - reservations, 363-364
 - superscopes, 370-371
- Scope tab (Group Policy Management snap-in), 232**
- Search feature (Start menu), 32**
- Search option (Add Counters dialog box), 545**
- Search Results pane (Search feature), 32**
- secondary zones (forward lookup zones), 337**
- secret keys, public key infrastructure, 494**
- security, 5**
 - encryption
 - BitLocker Drive Encryption, 294-300
 - EFS, 293
 - GPO, 404
 - groups, 170
 - IPSec, 484-487
 - Network Level Authentication, 430
 - Network Policy and Access Services
 - Add Roles Wizard, 381-382
 - installation, 381-382
 - NPS, 380, 400-404
 - RRAS authentication configuration, 389-390
 - RRAS authentication protocols, 387-389
 - RRAS configuration, 383-385
 - RRAS dial-in connections management, 397-398
 - RRAS modem port configuration, 385
 - RRAS remote access client configurations, 390-392
 - RRAS VPN connections management, 397-398
 - unauthenticated RRAS access, 389
 - VPN, 380, 392-398, 401-402
- passwords
 - Account Is Disabled check box (Active Directory), 158
 - adding member servers to domains, 211
 - adding Windows XP clients to domains, 207
 - Directory Service Restore Mode Administrator passwords, 148, 153
 - Password Never Expires check box (Active Directory), 158
 - User Cannot Change Password check box (Active Directory), 158
 - User Must Change Password at Next Logon check box (Active Directory), 158
- RIP interfaces, 420
- tokens, 170
- Windows Firewall, 10, 469
 - configuration, 470-472
 - connection security rules, 481-483
 - creating rules, 478-480
 - custom rules, 476
 - editing rules, 477
 - inbound rules, 475
 - outbound rules, 475
 - port rules, 476
 - predefined rules, 476
 - Properties dialog box, 478

security

- program rules, 475
 - Settings dialog box, 201, 471
- Windows Firewall with Advanced Security
 - configuration, 472-474
 - connection security rules, 481-483
 - creating rules, 478-480
 - Customize IPsec Settings dialog box, 484-487
 - Domain profile, 473
 - filtering rules, 476
 - inbound rules, 476
 - IPsec Settings tab, 484
 - New Connection Security Rule Wizard, 481-483
 - New Rule Wizard, 478-480
 - outbound rules, 476
 - Private profile, 473-474
 - Properties dialog box, 475
 - Public profile, 473-474
- WSHA, 237
- WSHV, 236-239
- Security Accounts tab (FTP Publishing Service, Properties dialog box), 533**
- Security logs (Event Viewer), 562**
- Security tab**
 - Advanced Features command, 183
 - CA Properties dialog box, 503
 - Printer Management snap-in, 322-324
 - Terminal Services Properties dialog box, 439
- Security window (Control Panel), 35**
- Select a Site Object for This Prefix dialog box (Active Directory Sites and Services snap-in, Subnets folder), 186**
- Select Counters from Computer option (Add Counters dialog box), 545**
- select disk 0 command (diskpart), 296**
- Select Group dialog box (Active Directory Users and Computers snap-in), 178**
- Select Server Roles page (Add Roles Wizard), File Services check box, 246**
- Select User or Group dialog box (New Object-Computer dialog box), 199**
- Select Users dialog box (Groups folder), 51**
- Select Users, Computers, or Groups dialog box**
 - Delegation of Control Wizard, 190
 - Share and Storage Management snap-in, 287-288
 - Share Permissions dialog box, 281
- Send E-mail Notification check box (New Printer Filter Wizard), 322**
- server core installation, 17, 25-27**
- server disk management**
 - allocation unit size, 94
 - backups, 107
 - Backup snap-in, 110-115
 - Backup utility, 109-110
 - differential backups, 108
 - file markers, 107
 - incremental backups, 108
 - media/software for, 107
 - normal backups, 108
 - planning, 108-109
 - remote backups, 109
 - restoring files from, 113-114
 - scheduling, 115
 - system recovery, 112
 - volume shadow copies, 113
- basic disks, converting to dynamic disks, 95
- basic storage, 89
- Disk Management snap-in
 - Convert to Dynamic Disk dialog box, 95
 - Details pane, 91
 - Extend Volume Wizard, 98
 - New Raid-5 Volume Wizard, 103-104
 - New Spanned Volume Wizard, 97
 - Properties dialog box, 105-107
 - Shrink dialog box, 99
- dynamic disks, converting basic disks to, 95
- dynamic storage, 89
- FAT32 formatting, 94
- GPT drives, 90
- MBR drives, 90-91

server to server rules (Windows Firewall)

- mirror sets, 101-102
- NTFS formatting, 94
- numbering drives, 92
- partitions, 92-94
- RAID
 - levels of, 100
 - RAID 1 implementation, 101-102
 - RAID 5 volumes, 96, 102-104
 - support for, 100
 - troubleshooting, 104
- stripe sets, 103-104
- VDS, 88-89
- volumes
 - deleting, 98
 - error-checking, 106
 - extending, 98
 - mirror sets, 101-102
 - mirrored volumes, 96
 - RAID-5 volumes, 96, 103-104
 - shrinking, 99-100
 - spanned volumes, 96-97
 - striped volumes, 96
 - viewing properties of, 105
- Server Manager, 5-6**
 - Actions pane, New User dialog box, 49
 - Active Directory Domain Services Installation Wizard, 146, 151
 - AD DS
 - child domains, 149-151
 - installation, 144-146
 - management tools, 154
 - Add Roles Wizard, 144-145, 149-150
 - Configuration icon, 47
 - Detail pane, 64
 - Diagnostics icon, 47
 - features, adding to servers, 67
 - Features icon, 47
 - Groups folder, 50-51
 - installed features, viewing, 217
 - node pane, Roles node, 64
 - opening, 63
 - Print Services role, 312
 - quick launching, 46
 - Remove Features Wizard, 68
 - Remove Roles Wizard, 66
 - Roles icon, 46
 - Serve Manager icon, 46
 - servers
 - removing roles from servers, 65
 - settings summaries, 64
 - viewing roles details, 64
 - Storage icon, 47
 - user accounts
 - adding local user accounts to computers, 49
 - adding local user accounts to groups, 50-51
 - creating local user accounts, 48
- Server Manager icon (Server Manager), 46**
- Server Operators groups, 175, 322**
- server roles**
 - AD DS
 - child domains, 149-153
 - configuration, 148
 - Directory Service Restore Mode Administrator passwords, 148, 153
 - Domains and Trusts snap-in, 154
 - installation, 144-147
 - management tools, 154
 - root domains, 149
 - Sites and Services snap-in, 154
 - Users and Computers snap-in, 154, 157, 160
- DHCP, 58
- DNS, 58
 - domain controllers, 56
 - features, adding to, 62
 - installation, 58, 63
 - performance concerns, 60
- servers
 - adding to, 60-61, 65
 - application servers, 57
 - file servers, 56
 - messaging servers, 57
 - print servers, 56
 - removing from, 65
 - web servers, 57
 - services, selecting for, 62-63
 - viewing details of, 64
- server to server rules (Windows Firewall), 481**

servers**servers**

- CA servers, naming, 498
- clusters, 11
- connectivity, netstat command, 138
- DHCP
 - Active Directory authorization, 360
 - adding to, 373
 - DHCPACK messages, 355
 - DHCPOFFER messages, 354
 - editing options, 371-372
 - server roles, 58
- digital certificate servers, viewing properties of, 500
- DNS, 327, 330
 - cache-only servers, 346
 - configuration, 335-341
 - copying databases, 338
 - forward lookup zones, 336-339, 350
 - FQDN, 328
 - InterNIC, 328
 - log events, 348
 - monitoring, 347-348
 - preferred servers, 331
 - reverse lookup zones, 339-341
 - server roles, 58
 - testing, 347
 - troubleshooting, 347-348
 - viewing events of, 348
- features, adding, 60-61

file servers

- configuration, 246-249
- dedicated servers, 246
- disk quotas, 250-254
- listing open files, 262
- managing, 261
- network shares, 255-260
- viewing current sessions, 261
- Volume Shadow Copy Service, 264-265
- Internet Information server, 508
- licensing, 18
- member servers, adding to domains, 210
- network connections, checking, 566-568
- NPS server configuration, 401-404
- print servers, 310, 314-315
- Shadow Copy servers, scheduling, 264-265
- standalone member servers, IIS 7.0 installation, 515
- virtual servers, 9, 17
- VPN servers, creating, 393
- WINS servers
 - database verification, 453
 - NetBIOS server deployment, 448-449
 - viewing active registrations in, 457
 - viewing status of, 451
- Session layer (OSI model), 123**
- sessions, viewing file servers, 261**

Sessions tab

- Terminal Services Properties dialog box, 439
- Users and Computers snap-in, Properties dialog box, 160
- Set up a Connection or Network Wizard, VPN client configuration, 396**
- Settings dialog box (Windows Firewall), 471**
- Settings tab (Group Policy Management snap-in), 232**
- Setup logs (Event Viewer), 562**
- shadow copies (backups), 113**
- Shadow Copies dialog box (Volume Shadow Copy Service), 264**
- Shadow Copy client, web resources, 266**
- Shadow Copy servers, scheduling, 264-265**
- Share and Storage Management node**
 - Permissions dialog box, 278
 - Select Users, Computers, or Groups dialog box, 281
 - Share Permissions dialog box, 281
- Share and Storage Management snap-in, 255, 287**
- share permissions**
 - allowing/denying, 279
 - assigning, 280-282
 - Change, 279
 - Full Control, 279

- managing, Computer folder, 280
- No Access, 280
- NTFS permissions, mixing with, 292
- Read Only, 278
- Read, 279
- viewing, 278
- Share Permissions dialog box (Share and Storage Management node), 281**
- share permissions, 279
- Share This Printer check box (Properties dialog box), 309**
- shared printers, 304, 309
- shares (network)
 - administrative shares, 256
 - associating to DFS roots, 268
 - creating, 255
 - creating, 257-260
 - publishing via Active Directory, 262-263
 - recovering, 264
 - Volume Shadow Copy Service, 264-265
- Sharing and Discovery settings (Network and Sharing Center), 568**
- sharing resources
 - peer-to-peer networks, 54
 - trees, Global Catalog, 143
- Show description option (Add Counters dialog box), 545**
- Shrink dialog box (Disk Management snap-in), 99**
- shrinking volumes, 99-100**
- Shut Down command, 33**
- simple queries, DNS server tests, 347**
- simple volumes. *See* partitions**
- sites (Active Directory), 183**
 - configuration, 185-188
 - creating, 184-185
 - Default-First-Site-Name, 185
 - delegation, 190
 - editing, 188
 - links, 187-188
 - properties, 188
 - replication, 188
 - subnets, 185-186
- Sites and Services snap-in (AD DS), 154**
- Sites folder (Active Directory Sites and Services snap-in), 185**
- Skip This Page by Default check box (Add Roles Wizard), 61, 246**
- smart card readers, EAP, 388**
- SMB (Server Message Block), 258**
- SMTP (Simple Mail Transport Protocol), 124**
- SNMP (Simple Network Management Protocol), 125**
- SOA (Start of Authority) resource records, DNS, 343**
- soft disk quotas, 251-253**
- Software Settings (Group Policy Objects Editor), 223**
- spanned volumes
 - creating, 96-97
 - deleting, 98
- naming, 98
- shrinking, 99-100
- specifying
 - amount of disk space for, 97
 - format of, 98
- SPAP (Shiva Password Authentication Protocol), 388**
- split-horizon processing, RIP, 421**
- SRV (Service) resource records, DNS, 343**
- SSL Settings option (IIS Manager, Features view), 526**
- SSTP (Secure Socket Tunneling Protocol), 393**
- stacked protocols, 121**
 - IPX/SPX, 122
 - TCP/IP, 122-123
 - IPv4. ***See*** individual entry
 - IPv6. ***See*** individual entry
 - netstat command, 138
 - OSI model mappings, 124-125
- Standalone CA (Certificate Authorities), 496**
- standalone member servers, IIS 7.0 installation, 515**
- Standard Server edition (Windows Server 2008), 10**
- standardizing hardware configurations, adding client computers to domains, 196**
- Start Automatically option (Web Site Defaults dialog box), 522**
- Start menu**
 - All Programs feature, 32

Start menu

- Classic Start menu, changing to, 33
 - Lock command, 33
 - quick access icons, 32
 - recently used programs, 32
 - Search feature, 32
 - Shut Down command, 33
 - Start Search box (Search feature), 32**
 - stateless auto-configuration, IPv6 addressing, 133
 - stateless mode (IP addresses), 360
 - static entries, WINS databases, 461
 - static IP addresses, 134, 449
 - Static Mapping dialog box (WINS snap-in), 456**
 - static mappings, WINS, 452, 456
 - static routing, 409, 415-416
 - stop conditions, data collector sets, 557
 - Storage icon (Server Manager), 47**
 - Storage tab (CA Properties dialog box box), 501**
 - storing Active Directory zones, 337
 - stripe sets, 103-104
 - striped volumes, 96
 - stub zones (forward lookup zones), 337
 - subdomains (DNS), 330
 - subnet calculators, 131
 - subnet masks (IPv4 addressing), 130
 - subnets**
 - Active Directory sites, 185-186
 - IPv4, 127-128
 - borrowing bits, 129
 - computing host addresses, 130-131
 - computing host ranges, 131
 - decimal to binary conversions, 129
 - IPv6, 134
 - network interface configuration, 413-414
 - routers, 408
 - Subnets folder (Active Directory Sites and Services snap-in), 185-186**
 - Subordinate CA (Certificate Authorities), 497**
 - Success Audit icon (Event Viewer), 564**
 - superscopes, 370-371
 - System and Maintenance window (Control Panel), 34**
 - System Properties dialog box, 44-45
 - Task Scheduler, 42
 - System Diagnostics templates (data collector sets), 553**
 - System logs (Event Viewer), 562-564**
 - System Monitor. See Performance Monitor, 547**
 - System Properties dialog box**
 - Active Directory Users and Computer snap-in, 204
 - Computer Name/Domain Changes dialog box, 211
 - System and Maintenance window, 44-45
 - system recovery (backups), 112**
 - System Recovery Options dialog box, 296**
 - System Stability Charts (Reliability Monitor), 538, 560**
 - SYSVOL (administrative share), 256**
- ## T
- Task Scheduler, 41**
 - Action screen, 43
 - Create Basic Task Wizard, 42
 - Task Trigger screen, 43
 - Task Trigger screen (Task Scheduler), 43**
 - tasks**
 - creating, 42
 - editing parameters of, 43
 - scheduling, 41-42
 - viewing, 43
 - TCP (Transmission Control Protocol), 125**
 - TCP/IP (Transfer Control Protocol/Internet Protocol), 122-123**
 - direct-connect printer installation, 306-307
 - DNS, 327
 - netstat command, 138
 - OSI model mappings, 124-125

TS Session Broker service

- Telephones tab (Users and Computers snap-in, Properties dialog box), 160
- Telnet protocol, 124
- templates (digital certificates), 500, 504, 508
- Terminal Server, 429
 - configuration, 436-438
 - connecting to, 441-443
 - Delete Temporary Folders on Exit option, 437
 - License Server Discovery Mode option, 438
 - Terminal Services Licensing Mode option, 438
 - Use Temporary Folders Per Sessions option, 437
- Terminal Services, 59
 - Active Server Wizard, 434
 - Add Roles Wizard, 429-431
 - application servers, 428
 - Configuration snap-in
 - Licensing Diagnosis tool, 435
 - TS Licensing service, 433
 - configuration, 438
 - Install Licenses Wizard, 434-435
 - installation, 429-432
 - Network Level Authentication, 430
 - Properties dialog box, 438-439
 - remote application integration, 428
 - Remote Desktop Connection client, 442-443
 - Terminal Server, 429
 - configuration, 436-438
 - connecting to, 441-443
 - Delete Temporary Folders on Exit option, 437
 - License Server Discovery Mode option, 438
 - Terminal Services Licensing Mode option, 438
 - Use Temporary Folders Per Sessions option, 437
 - Terminal Services Manager, 440-441
 - thin clients, 427
 - TS Gateway service, 429
 - TS Licensing service, 429-435
 - TS Session Broker service, 429
 - TS Web Access service, 429
- Terminal Services Licensing Mode option (Terminal Server), 438
- Terminal Services Profile tab (Users and Computers snap-in, Properties dialog box), 160
- test servers, 60
- testing
 - DNS servers, 347
 - forward lookup zones (DNS), 350
 - GPO, 233
- thin clients, 427
- threshold notification (disk quotas), 254
- To All DNS Servers in This Domain option (New Zone Wizard), 338
- To All Domain Controllers in This Domain option (New Zone Wizard), 338
- To All the DNS Servers in This Forest option (New Zone Wizard), 338
- tokens (security), 170
- tombstoning WINS mappings, 457
- Tools tab (Properties dialog box), 105-107
- top-level domains, 329
- tracert command, monitoring IP routing, 422
- transitive trusts, domains, 54
- Transport layer (OSI model), 123
- trees
 - Active Directory, 142-143
 - creating, 144
 - domains, 54, 142-143
 - forests, 54, 143-144
 - sharing resources, 143
- troubleshooting
 - DHCP, 375
 - DNS, 349-350
 - DNS server, 347-348
 - NAT, 494
 - RAID, Event Viewer, 104
 - WINS, 460-462
- trust relationships, domains, 54
- TS Gateway service, 429
- TS Licensing service, 429-435
- TS Session Broker service, 429

TS Web Access service

TS Web Access service, 429

tunnel rules (Windows Firewall), 481

tunneling protocols (VPN), 392-393

U

UDP (User Datagram Protocol), 82, 125

uninstallation programs, 40-41

Unique static mapping node type (WINS), 456

universal groups (Active Directory), 170-172

unrevoking digital certificates, 510

updates

dynamic updates, DNS, 333, 338

LMHOSTS files, 447

Windows server Update Service, 239

upgrades, Windows Server 2008, 20

clean installation versus, 19

in-place upgrades, 23

Use Temporary Folders Per Sessions option (Terminal Server), 437

User (using Kerberos V5) option (Customize IPSec Settings dialog box), 487

user accounts

creating, 48

domain accounts

adding users to, 156-159

setting logon hours, 161-162

setting properties in, 159-161

specifying computers for login, 162

domain accounts, 156

local user accounts, 155

adding to computers, 49

adding to groups, 50-51

creating, 48

User Accounts window (Control Panel), 36

User Cannot Change Password check box (Active Directory), 158

User certificates (digital), 507

User Client Access licenses, 18

User Configuration section (Group Policy Objects Editor), 222

Administrative Templates, 224

Software Settings, 223

Windows Settings, 223

User Must Change Password at Next Logon check box (Active Directory), 158

user principal names, 156

Users and Computers snap-in (AD DS), 154

Find feature, 164

Properties dialog box

Account tab, 160-161

COM+ tab, 161

Dial-In tab, 160

Environment tab, 160

General tab, 160

Member Of tab, 160

Organization tab, 160

Profile tab, 160

Sessions tab, 160

Telephones tab, 160

Terminal Services Profile tab, 160

users, adding to domains, 157

Users and Computers tab (Windows Firewall Properties dialog box), 478

Users groups, 175

V

VDS (Virtual Disk Service), 88-89

Verification interval option (WINS snap-in, Intervals tab), 453

VeriSign, digital certificates, 495

View menu, Advanced Features command, 183

virtual directories, 530-531

Virtual Directories page (IIS Manager), Add Virtual Directory dialog box, 530

virtual memory, 44-45

Virtual Memory dialog box (System Properties dialog box, Advanced tab), Automatically Manage Paging File Size for All Drives check box, 45

Windows 2000 Server

- virtual servers, 9
 - deploying, 55
 - hardware requirements, 17
 - virtualization, benefits of, 96
 - Vista (Windows)
 - clients, adding to domains, 204-206
 - Network and Sharing Center, 209
 - Windows Server, similarities to, 3
 - Volume Monitoring Options dialog box (Add Roles Wizard), 249
 - Volume Shadow client, web resources, 266
 - Volume Shadow Copy Service, 264
 - volumes, 89
 - creating, BitLocker Drive Encryption, 295-296
 - deleting, 98
 - disk quotas, creating, 251
 - error-checking, 106
 - extending, 98
 - mirror sets, 101-102
 - mirrored volumes, 96
 - NTFS permissions, assigning to, 286
 - properties, viewing, 105
 - RAID-5 volumes, 96, 103-104
 - shadow copies (backups), 113
 - shrinking, 99-100
 - simple volumes. **See** partitions
 - spanned volumes
 - creating, 96-97
 - naming, 98
 - specifying amount of disk space for, 97
 - specifying format of, 98
 - striped volumes, 96
 - VPN (virtual private networks), 380
 - clients, configuration, 395-397
 - connections management, 397-398
 - NPS servers, 401-402
 - ports, 394-395
 - servers, creating, 393
 - tunneling protocols, 392-393
 - VSS (Volume Shadow Copy Service), 112
- ## W - X - Y - Z
- WAN Miniports, VPN ports, 394-395
 - Warning icon (Event Viewer), 563
 - WDS (Windows Deployment Services)
 - Add Image Wizard, 77-79
 - boot images, 76-79
 - client OS, remote installation, 83-85
 - configuration, 74-76, 80-82
 - deploying, 73
 - install image files, 76, 79
 - installation, 72-73, 80-82
 - Properties dialog box
 - Advanced tab, 82
 - Boot tab, 81
 - Client tab, 82
 - DHCP tab, 82
 - Directory Services tab, 81
 - General tab, 80
 - Network Settings tab, 82
 - PXE Response Settings tab, 80
 - Windows Deployment Services Configuration Wizard, 74-76
 - WDS (Windows Deployment Services), 9, 71
 - Web edition (Windows Server 2008), 12
 - Web Server (IIS) check box (Add Role Wizard), 515
 - web servers, 57, 515
 - Web Site Defaults dialog box (IIS Manager), 522
 - websites
 - authentication, 527
 - IIS 7.0
 - adding to, 519-521
 - configuration features of, 522-526
 - setting defaults in, 521-522
 - logs, 528
 - virtual directories, 530-531
 - Windows 2000 Server
 - clients, adding to domains, 208
 - Windows Server 2008, upgrading to, 19-20

Windows Deployment Services, multiple Windows Server installation

- Windows Deployment Services, multiple Windows Server installation, 25**
- Windows Deployment Services Configuration Wizard, 74-76**
- Windows Explorer, Properties dialog box, 105-107**
- Windows Firewall, 10, 469**
 - configuration, 470-472
 - Properties dialog box, 478
 - rules
 - connection security rules, 481-483
 - creating, 478-480
 - custom rules, 476
 - editing, 477
 - inbound rules, 475
 - outbound rules, 475
 - port rules, 476
 - predefined rules, 476
 - program rules, 475
 - Settings dialog box, 201, 471
- Windows Firewall with Advanced Security**
 - configuration, 472-474
 - Domain profile, 473
 - New Connection Security Rule Wizard, 481-483
 - New Rule Wizard, 478-480
 - Private profile, 473-474
 - Properties dialog box, 475
 - Customize IPSec Settings dialog box, 484-487
 - IPSec Settings tab, 484
 - Public profile, 473-474
 - rules
 - connection security rules, 481-483
 - creating, 478-480
 - filtering, 476
 - inbound rules, 476
 - outbound rules, 476
- Windows Security dialog box (Active Directory Users and Computer snap-in), 205**
- Windows Server 2000 functional level mode, 179**
- Windows Server 2003**
 - functional level mode, 179
 - Windows Server 2008, upgrading to, 19-20
- Windows Server 2008**
 - Datacenter edition, 11
 - development of, 3
 - Enterprise edition, 11
 - FAT32 file systems, support for, 21
 - functional level mode, 179
 - installation, 82
 - clean installation, 21-23
 - domain installation, 27
 - hardware compatibility lists, 17
 - hardware requirements, 16-17
 - multiple installation, 25
 - planning for, 15-16
 - processor requirements, 18
 - server core installation, 17, 25-27
 - server licensing, 18
 - upgrading versus, 19
 - virtual servers, 17
 - volume creation, 295-296
 - workgroup installation, 27
- NTFS file systems, support for, 21
- Standard Server edition, 10
- upgrading to, 20
 - clean installation versus, 19
 - in-place upgrades, 23
- Web edition, 12
- Windows Vista, similarities to, 3
- Windows Server Update Service, 239**
- Windows Settings (Group Policy Objects Editor), 223**
- Windows Vista**
 - clients, adding to domains, 204-206
 - installation, 82
 - Network and Sharing Center, 209
 - Windows Server, similarities to, 3
- Windows XP clients, adding to domains, 206-207**
- WINS (Windows Internet Naming Service), 58**
 - bandwidth, 448
 - clients, 449, 459
 - configuration, 449-454
 - databases
 - backups, 458

- deleting mappings, 457
 - deleting records from, 458
 - restoring, 459
 - static entries, 461
 - static mappings, 456
 - tombstoning mappings, 457
 - viewing mappings of, 455
 - dynamic databases, 449
 - events
 - logging, 453
 - viewing in Event Viewer, 462
 - installation, 449-450
 - load balancing, 454
 - NBTSTAT command, 447, 462-463
 - NetBIOS
 - broadcasts, 446-447
 - LMHOSTS files, 447
 - names, 445-447
 - node types, 448
 - server deployment, 448-449
 - performance
 - enhancing, 454
 - monitoring, 461
 - replication partners, 452-455
 - resource records, DNS, 343
 - servers
 - database verification, 453
 - viewing active registrations in, 457
 - viewing status of, 451
 - static mappings, 452
 - troubleshooting, 460-462
- WINS snap-in**
- Active Registrations Folder, 457
 - Browse for Folder dialog box, 459
 - New Replication Partner dialog box, 454
 - Properties dialog box
 - Advanced tab, 453
 - Database Verification tab, 453
 - Default Backup Path dialog box, 458
 - General tab, 452
 - Intervals tab, 452-453
 - Log Detailed Events to Windows Event Log option, 461
 - server status, viewing, 451
 - starting, 451
 - Static Mapping dialog box, 456
- WINS tab (Advanced TCP/IP Settings dialog box), 136**
- WinSock applications, DNS resolvers, 331**
- wizards**
- Active Directory Domain Services Installation Wizard
 - AD DS child domain creation, 151
 - AD DS installation, 146
 - Group Policies, 216
 - Active Server Wizard, Terminal Services, 434
 - Add Feature Wizard, 67-68
 - installation Backup utility, 109-110
 - installation Group Policy Management snap-in, 218
 - Terminal Server configuration, 436
 - Add Image Wizard, WDS, 77-79
 - Add Printer Wizard, 306
 - Do Not Share This Printer option, 308
 - Print a Test Page option, 309
 - Add Role Services Wizard, RRAS installation, 410
 - Add Roles Wizard, 6, 61, 311
 - AD CS installation, 495-499
 - AD DS, 144-145, 149-150
 - Add or Edit DHCP Scopes screen, 358-361
 - configuration file servers, 246
 - Confirmation page, 249
 - DHCP installation, 355, 358
 - DNS installation, 334
 - IIS 7.0 installation, 515
 - Installation Results page, 249
 - installation Network Policy and Access Services role, 234-235
 - Network Policy and Access Services, 381-382
 - Report Options page, 249
 - Select Server Roles page, 246

wizards

- Skip This Page by Default check box, 61, 246
- Terminal Services, 429-431
- Volume Monitoring
 - Options dialog box, 249
- Web Server (IIS) check box, 515
- Add Server Role Wizard, DFS installation, 267
- Backup Once Wizard, 111
- Backup Schedule Wizard, 115
- Certificate Request Wizard, 507
- Configure VPN or Dial-Up Wizard, 401
- Configure Your Server Wizard, 310
- Create a Share Wizard, 278
- Create Basic Task Wizard (Task Scheduler), 42
- Create New Data Collector Set Wizard, 551, 554-555
- Create Superscope Wizard, 370
- Delegation of Control Wizard, 190
- Extend Volume Wizard, 98
- Install Licenses Wizard, Terminal Services, 434-435
- Network Identification Wizard, 207
- Network Printer Installation Wizard, 315
- Network Setup Wizard, 213
- New Connection Security Rule Wizard (Windows Firewall with Advanced Security snap-in), 481-483
- New Printer Filter Wizard, 320
- New Raid-5 Volume Wizard, 103-104
- New Rule Wizard (Windows Firewall with Advanced Security snap-in), 478-480
- New Scope Wizard, 367-371
- New Spanned Volume Wizard, 97
- New Zone Wizard
 - forward lookup zone creation, 336-339
 - reverse lookup zone creation, 340-341
- Provision a Shared Folder Wizard, 257-260
- Recovery Wizard, 113-114
- Remove Features Wizard (Server Manager), 68
- Remove Roles Wizard (Server Manager), 66
- Replication Folder Wizard, 272-274
- Routing and Remote Access Server Setup Wizard, 383-385, 393, 411
- Scheduling Wizard (Backup utility), 109
- server role installation, 58
- Set up a Connection or Network Wizard, VPN client configuration, 396
- Windows Deployment Services Configuration Wizard, 74-76
- workgroups**
 - creating, 212-213
 - Windows Server installation, 27
- Write NTFS permissions, 283-284**
- WSHA (Windows Security Health Agent), 237**
- WSHV (Windows Security Health Validator), 236-239**