

# module 2

## Creating an Employee Directory Application

The Employee Directory application illustrates how easily you can create a fully functional database-driven application in ASP.NET. This application enables you to display a list of employees, add new employees, and modify existing employee information. The amazing thing about this application is it is written with only two lines of code.

## Creating the Employee Database Table

All the employee information is stored in a Microsoft SQL Server 2005 Express database. SQL Server Express is included with both Visual Studio 2005 and Visual Web Developer.

You create a new database by selecting the menu option **Website, Add New Item** and selecting the SQL Database item (see Figure 8). You are prompted to add the database to the App\_Data folder.

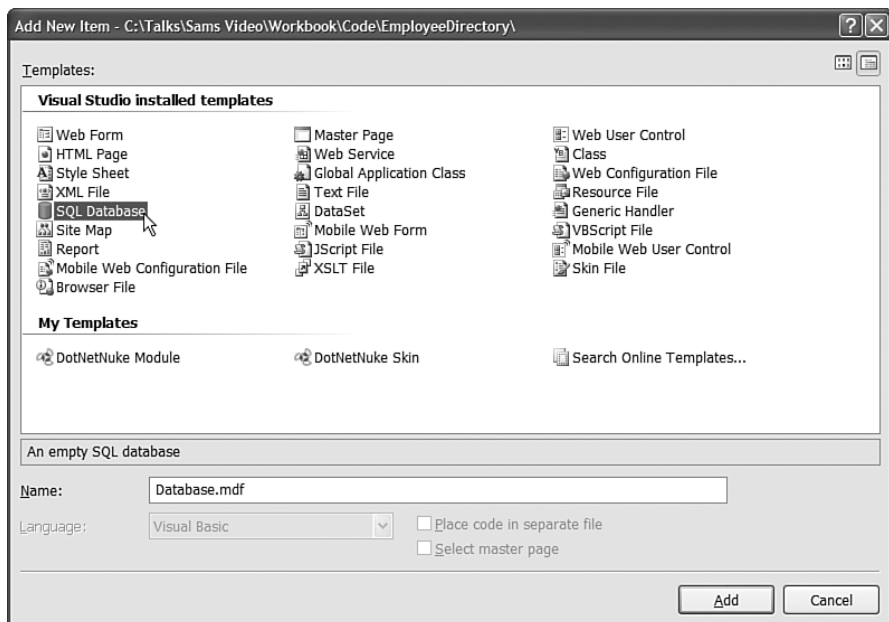


Figure 8 Creating a new SQL Server Express database.

After you create a new database, you can add database tables to the database by right-clicking the Tables folder in the Database Explorer window (named Server Explorer in Visual Studio 2005) and selecting **Add New Table**.

For the Employee Directory application, you need to create a database table with the following columns:

Column Name	Data Type	Allow Nulls
Id	int	false
LastName	nvarchar(150)	false
FirstName	nvarchar(150)	false
PhoneExtension	nvarchar(50)	false
Email	nvarchar(300)	false
DateCreated	datetime	false

Both the Id column and the DateCreated column have special properties. The Id column should be marked as a primary key column. You can mark the Id column as a primary key column by clicking the icon of the key, which appears toward the top of the Editor window.

Furthermore, the Id column must be an identity column. You can mark the Id column as an identity column by expanding *Identity Specification* under *Column Properties* and setting the property *Is Identity* to the value **Yes**. An identity column automatically generates a unique number for each row added to a table.

The DateCreated column needs to be provided with a default value. You assign a default value to a column by entering a value for the *Default Value* or *Binding* property in the list of *Column Properties*. In this case, you enter the value **GetDate()** as the default value for the DateCreated column. The *GetDate()* function returns the current date and time. By assigning this function as the default value of the DateCreated column, each row added to the database table gets a date and time stamp automatically.

## Creating the Default.aspx Page

The Default.aspx page displays a list of all the employees contained in the Employee database table (see Figure 9). Follow these steps to create the Default.aspx page.