

THE ADOBE PHOTOSHOP LIGHTROOM CC / LIGHTROOM 6 BOOK

The Complete Guide for Photographers



Martin Evening



The Adobe Photoshop Lightroom CC / Lightroom 6 Book

The Complete Guide for Photographers

Martin Evening



The Adobe® Photoshop® Lightroom® CC / Lightroom® 6 Book

The Complete Guide for Photographers

Martin Evening

This Adobe Press book is published by Peachpit, a division of Pearson Education.

For the latest on Adobe Press books, go to www.adobepress.com.

To report errors, please send a note to errata@peachpit.com.

Copyright © 2015 by Martin Evening

Project Editor: Valerie Witte

Production Editor: Tracey Croom

Copyeditor: Elizabeth Kuball

Proofreader: Patricia J. Pane

Technical Reviewer: Ian Lyons

Compositors: Martin Evening with David Van Ness

Indexer: James Minkin

Cover Design: Charlene Charles-Will

Cover Photo: Martin Evening

Cover Model: Greta @ FM, Client: Rainbow Room

Notice of Rights

All rights reserved. No part of this book may be reproduced or transmitted in any form by any means, electronic, mechanical, photocopying, recording, or otherwise, without the prior written permission of the publisher. For information on getting permission for reprints and excerpts, contact permissions@peachpit.com.

Notice of Liability

The information in this book is distributed on an "As Is" basis, without warranty. While every precaution has been taken in the preparation of the book, neither the author nor Peachpit shall have any liability to any person or entity with respect to any loss or damage caused or alleged to be caused directly or indirectly by the instructions contained in this book or by the computer software and hardware products described in it.

Trademarks

Adobe, Lightroom, and Photoshop are registered trademarks of Adobe Systems Incorporated in the United States and/or other countries. All other trademarks are the property of their respective owners.

Many of the designations used by manufacturers and sellers to distinguish their products are claimed as trademarks. Where those designations appear in this book, and Peachpit was aware of a trademark claim, the designations appear as requested by the owner of the trademark. All other product names and services identified throughout this book are used in editorial fashion only and for the benefit of such companies with no intention of infringement of the trademark. No such use, or the use of any trade name, is intended to convey endorsement or other affiliation with this book.

ISBN-13: 978-0-133-92919-5

ISBN-10: 0-133-92919-1

9 8 7 6 5 4 3 2 1

Printed and bound in the United States of America

Dedicated in memory of Bruce Fraser

Introduction

Work on the Adobe® Photoshop® Lightroom® program began toward the end of 2003 when a small group of Adobe people, headed by Mark Hamburg, met up at photographer Jeff Schewe's studio in Chicago to discuss a new approach to raw image editing and image management. What would it take to meet the specific needs of those photographers who were now starting to shoot digitally? More specifically, what would be the best way to help photographers manage their ever-growing libraries of images? It was shortly after this that I was invited to join an early group of alpha testers and help work out what sort of program Lightroom (or Shadowland, as it was known then) should become. As we began to discuss our different digital photography workflows, it became increasingly obvious why we all needed a better way to manage and process our digital photos. Lightroom underwent some pretty major changes in those early stages as the team tried out different workflow ideas, until eventually we ended up with the Lightroom program you see now.

The Adobe Photoshop Lightroom CC / Lightroom 6 Book represents the culmination of more than nine years' work in which I have been involved with Lightroom. Basically, this book is intended to be the ultimate reference guide to Lightroom and designed to help you get the maximum benefit out of the program. In writing this book, I have had in mind both amateur and professional photographers and have aimed to provide what I believe is the most detailed book there is on this subject. I also wanted to make sure space was given to explaining the background to some of the features. The feedback I have had for previous editions of this book has been encouraging. Newbies to Lightroom have found it easy to access and understand all the basics, while advanced professional users appreciate the background detail that's provided. I have to confess, when I first started work on this project, I never imagined the book would end up being 744 pages in length. Mark Hamburg once joked that he must have failed in his mission to make Lightroom "unreasonably simple" if you needed a book as thick as mine in order to understand it!

So many changes have taken place since version 1.0 was released. As a result, not only has the book ended up being a lot bigger, but I have also had to rewrite almost everything that was in the original edition. As always, I suggest you approach the book by reading it in chapter order, starting with Chapter 1: Introducing Adobe Photoshop Lightroom, which explains some of the fundamental principles behind Lightroom.

The Lightroom catalog is a major feature of the program, which is why I have devoted more than 200 pages of the book to providing in-depth advice on how to work with the Library module, including how to import photos and manage your photos through the use of keywords and metadata. Even more space is devoted to image processing and how to make use of all the Develop module controls. Here you will find some great picture examples, which show how Lightroom can help you unleash your creativity.

This edition of the book has a companion website: thelighroombook.com. It contains additional resource material in the form of Lightroom movie tutorials, templates, and PDF downloads. I know a lot of readers would like to have access to the images that appear in the book. In response to this, I have created a downloadable Lightroom catalog that contains nearly all the photos that appear here. Full instructions on how to install the catalog once you have downloaded it are contained on the website.



Downloadable Content:
thelighroombook.com

Overall, I am still as excited about Lightroom as I was at the beginning of the program's development, and I hope the book provides the inspiration and insights to help you get the most out of the program, too.

Martin Evening, March 2015

Lightroom book updates

Adobe has been known to release interim updates for the Lightroom program in which new features are added. I am proud to say that I have had a good track record in always providing readers with updated content in the form of PDFs or movies whenever this happens. So when this happens, do remember to check the book website for new content. I also have a Facebook page where readers can be kept updated: facebook.com/MartinEveningPhotoshopAndPhotography.

Acknowledgments

I would like to thank Pamela Pfiffner, for prompting me to get started on this project and for her advice and help during the planning stage of this book series. For this particular edition, Valerie Witte was my editor and has done an excellent job making sure everything has come together smoothly. Other members of the publishing team included the production editor, Tracey Croom; copy editor, Elizabeth Kuball; proofreader, Patricia J. Pane; indexer, James Minkin; and additional compositing and corrections by David Van Ness. I would also like to thank Charlene Charles-Will for the cover design, as well as Sara Jane Todd, who worked on the marketing.

Lightroom is really the brainchild of Mark Hamburg, without whom none of this would have happened. Since then I have been helped a lot by the various Lightroom engineers and other members of the team. It is all thanks to them that I have managed to gather the background technical knowledge required to write this book. In particular, I would like to thank Thomas Knoll, Eric Chan, Max Wendt, and Josh Bury (who worked on the Camera Raw engineering). I would also like to thank product manager Tom Hogarty, product evangelist Julieanne Kost, and previous product evangelist George Jardine for the support and help they have given me. I would especially like to thank Ian Lyons, who tech-edited the book. Thank you, Ian, for clarifying all the many technical points and providing

additional insights. Thanks, too, go to Sean McCormack, who provided me with valuable feedback and assistance.

A number of photographic shoots have been carried out specifically for this book. I would like to thank the models, Lucy Edwards and Veronica at M&P and Kelly from Zone; Camilla Pascucci for makeup; Terry Calvert, James Pearce, and Nadia Foster for hair; Harriet Cotterill for the clothes styling; Stuart Weston and Neil Soni for the use of their studios; and Harry Dutton and Rob Cadman for assisting me. Also a big thank-you to Jeff Schewe and George Jardine for documenting the shoots with stills and video.

It has been an interesting experience to see a new program emerge from scratch and has been a pleasure to share the development process in the company of a great group of alpha testers and fellow authors, who were all willing to share their knowledge about the program with one another. You will notice that this book is dedicated to the memory of Bruce Fraser, who sadly passed away in December 2006. Bruce was one of the original core group of Lightroom alpha testers who helped shape the program. The Lightroom capture and output sharpening are both based on Bruce's original work on Photoshop sharpening techniques. Bruce was a true genius and is deeply missed by all those who knew and worked with him.

A book like this would be rather boring to read through without having some decent photographs to illustrate it with. To supplement my own photography, I would, therefore, like to thank Peter Andreas, Sean McCormack, Eric Richmond, and Jeff Schewe, all of whom are individually credited throughout this book. And lastly, I would like to thank my wife, Camilla, and daughter, Angelica, for yet again being so understanding and patient while I was glued to the computer!

Contents

1 Introducing Adobe Photoshop Lightroom .. 1

What is Adobe Photoshop Lightroom?	2
Keeping things simple	2
Modular design	2
Lightroom performance	4
Adobe Camera Raw processing	4
Color controls	5
Managing the image library	5
Where does Photoshop fit in?	6
Integrating Lightroom with Photoshop	7
If your Lightroom subscription should come to an end	7
What you need	8
Installing Lightroom	9
64-bit processing	10
Sleep protection	10
Upgrading from an older Lightroom catalog	11
Using Lightroom for the first time	13
Lightroom preferences essentials	14
Performance preferences	18
Graphics card compatibility	19
Managing Lightroom mobile via Lightroom	20
Lightroom mobile preferences	20
History panel	21
Customizing the identity plate and interface	22
Getting help	24
Introducing the Lightroom interface	25
Working through the book	27

2 Importing photos 29

The main Import dialog	30
Copy as DNG, Copy, Move, or Add?	32
Converting to DNG after import	32
Updating DNG previews for third-party viewing	33
Importing files from a card	34
Activity Center	38
Source panel	40
Content area	41
Content area segmenting options	42

File Handling panel	44
Making backup copies of imported files.....	45
Photos shot as raw + JPEG	46
File-handling limitations	46
File Renaming panel	47
Renaming catalog images later	48
Apply During Import panel.....	49
Destination panel	50
Planning where to store your imported photos.....	50
Importing to a selected destination folder	52
Import Presets menu	52
Importing video files	53
Adding photos from a folder to the catalog	54
Importing photos via drag and drop.....	56
Importing photos from another catalog	58
Auto Imports.....	60
Importing photos directly from the camera	61
Connecting the camera to the computer.....	61
Lightroom-tethered shooting	62

3 The Library module 67

About Lightroom catalogs	68
Backing up the catalog file	69
Backup strategies.....	71
Backup software	71
Catalog corruption	72
Creating and opening catalogs	73
Creating a new catalog	73
Opening an existing catalog	74
Exporting catalogs	75
Exporting with negatives	75
Exporting without negatives.....	76
Including Smart Previews	76
Including available previews	77
Opening and importing catalogs	77
Limitations when excluding negatives.....	79
Changed Existing Photos section.....	79
Export and import summary.....	79
Working with Smart Previews	80
How to create Smart Previews	80
Making the catalog portable	81

The Library Module panels	84
The Navigator panel	86
The Catalog panel	86
The Library module Toolbar	86
The Folders panel	87
The Folders panel/system folders relationship	88
Locating a folder at the system level	89
Maintaining links between Lightroom and folders	91
Synchronizing folders	92
Adding new folders via the Folders panel	94
Finding the link from the catalog to a folder	95
Organizing your folders	97
The Filter bar	99
Exploring the Library module	100
Grid view options	100
Library Grid navigation	102
Working in Loupe view	104
Loupe view options	105
Working with photos in both Grid and Loupe views	106
Loupe view navigation	108
Loupe zoom views	109
Loupe view shortcuts	109
Loupe Overlay view	110
Grid and Guides	110
Layout Image	112
The Layout Overlay feature in use	112
Previews and preview appearance	114
Initial Import Photos dialog preview building options	114
How Lightroom previews are generated	115
Camera embedded previews vs. Lightroom previews	116
Missing previews	117
Preview size and quality	117
Working in Survey view	118
Working in Compare view	120
Compare view mode in action	122
Navigating photos via the Filmstrip	124
Working with a dual-display setup	126
How to get the most out of working with two displays	128
Rating images using flags	130
Refine Photos command	131
Rating images using numbered star ratings	132

Rating images using color labels	134
Color label sets	134
Other ways you can use color labels	135
Grouping photos into stacks	136
Automatic stacking	136
Making image selections	138
Quick Collections	139
Collections	140
Module collections	141
The module collections in use	144
Editing collections	144
Target collection	145
Collection sets	146
Smart Collections	146
Removing and deleting photos	149

4 Develop module image editing 151

Image editing in Lightroom	152
Smarter image processing	152
Steps for getting accurate color	153
Calibrating the display	153
Choosing a display	153
Calibrating and profiling the display	153
White point and gamma	154
Matching white balances	154
Steps to successful calibration and profiling	155
Process versions	158
Upgrading to Process 2012	159
Camera Raw compatibility	160
The Develop module interface	162
Develop view options	164
Develop module cropping	164
Rotating a crop	164
Constrain to warp cropping	168
Auto straightening	168
Crop aspect ratios	170
Crop to same aspect ratio	171
Repositioning a crop	171
Crop guide overlays	171
Crop guide orientation	171
Canceling a crop	172
Tool Overlay menu	172

The Tool Overlay options	172
Quick Develop cropping	173
The Basic panel	174
White Balance tool	174
White Balance corrections	176
Creative white balance adjustments	177
Taking into account localized adjustments	178
Independent auto white balance adjustments	179
The Basic panel tone-editing controls	180
Exposure	180
Contrast	181
Highlights and Shadows	181
Whites and Blacks	182
Auto Whites and Blacks adjustments	183
General Auto Tone adjustments	184
Basic panel adjustments workflow	185
Histogram panel	189
The Histogram panel and image adjustments	190
Navigating the Basic panel via the keyboard	191
Correcting an overexposed image	192
Correcting an underexposed image	194
Creating HDR photos using Photo Merge	196
Photo Merge DNGs	197
Deghost Amount options	200
Creating panorama photos using Photo Merge	200
Panorama projection options	201
Match Total Exposures	204
Highlight clipping and Exposure settings	206
Clipping the blacks	206
Clarity slider	208
Using Clarity to decompress the levels	209
Negative Clarity adjustments	210
Vibrance and Saturation	212
Quick Develop panel tone adjustments	214
Process version conflicts	215
The other tone controls	215
A typical Quick Develop workflow	216
Editing video files in Quick Develop	219
The Tone Curve panel	224
Point Curve editing mode	226
RGB curves	228
The Tone Curve regions	230

Combining Basic and Tone Curve adjustments	232
Tone range split point adjustments	236
HSL / Color / B&W panel	238
Selective color darkening	240
False color hue adjustments	241
Using the HSL controls to reduce gamut clipping	242
Lens Corrections panel	244
Lens profile corrections	244
Accessing and creating custom camera lens profiles	245
Profile lens corrections in use	245
In-camera lens corrections	248
Removing chromatic aberration	248
Defringe adjustments	250
The Defringe controls in use	251
Eyedropper tool	251
Applying a global Defringe adjustment	252
Applying a localized Defringe adjustment	255
Upright adjustments	257
How Upright adjustments work	257
Suggested order for Upright adjustments	258
Synchronizing Upright settings	259
Perspective transform corrections	263
Lens Vignetting	263
Effects panel	266
Post-Crop vignettes	266
Post-Crop vignette options	266
Adding Grain	270
Camera Calibration panel	272
Camera profiles	272
Creating a custom calibration with DNG Profile Editor	274
Creative uses of the Camera Calibration panel	277
Assessing your images	278
Comparing before and after versions	278
Managing the Before and After previews	280
Image retouching	284
Spot Removal tool	284
Visualizing spots	286
Creating brush spots	287
Clone or Heal	291
Editing circle and brush spots	291
Tool Overlay options	291
Undoing/deleting spots	291
Auto-find behavior	292

Spot Removal tool feathering	292
Synchronized spotting	293
Auto Sync spotting	294
Red Eye Correction tool	295
Adjusting the cursor size	295
Pet Eye mode	297
Localized adjustments	298
Initial Adjustment Brush options	298
Editing the Adjustment Brush strokes	300
Saving effect settings	300
Localized adjustment position and editing	300
Automasking	302
Previewing the brush stroke areas	304
Beauty retouching with negative clarity	304
Hand-coloring in Color mode	306
Localized Temperature slider adjustments	308
Localized Shadows adjustments	310
Clarity and Sharpness adjustments	312
Graduated Filter tool	314
Brush editing a graduated filter effect	317
Radial Filter tool	319
Correcting edge sharpness with the Radial Filter	321
History panel	323
Snapshots panel	324
How to synchronize snapshots	326
Easing the workflow	328
Making virtual copies	328
Making a virtual copy the new master	328
Synchronizing Develop settings	330
Auto Sync mode	330
Lightroom and Camera Raw	332
Viewing Lightroom edits in Camera Raw	332
Viewing Camera Raw edits in Lightroom	332
Keeping Lightroom edits in sync	333
Synchronizing Lightroom with Camera Raw	334
Copying and pasting Develop settings	336
Applying a previous Develop setting	336
Saving Develop settings as presets	338
Auto Tone preset adjustments	339
The art of creating Develop presets	339
Creating a new Develop preset	340
Understanding how presets work	341

Preventing preset contamination	342
Resetting the Develop preset settings	345
Creating default camera Develop settings	346

5 The art of black and white 349

Black-and-white conversions	350
Black-and-white Develop controls	350
Black-and-white conversion options	352
How not to convert.....	352
Temperature slider conversions	354
Manual black-and-white adjustments.....	356
Black-and-white infrared effect.....	359
Fine-tuning black-and-white images.....	362
Split Toning panel.....	362
Split-toning a color image	364
HSL panel: Desaturated color adjustments	366
The HSL black-and-white method	367
Camera Calibration adjustments	367

6 Sharpening and noise reduction 371

Capture sharpen for a sharp start	372
Improved Lightroom raw image processing	373
Output sharpening.....	375
Default Detail panel settings.....	375
Sharpen preset settings.....	375
Sharpen – Faces	376
Sharpen – Scenic.....	377
Sample sharpening image.....	378
Evaluate at a 1:1 view	379
Luminance targeted sharpening.....	379
The sharpening effect sliders	379
Amount slider	380
Radius slider.....	382
The modifying controls.....	384
Detail slider	384
Interpreting the grayscale sharpening preview	387
Masking slider.....	387
Masking slider preview mode.....	388
Applying sharpening adjustments	390

Creative sharpening with the adjustment tools	392
Applying localized blurring	394
Noise reduction	396
Luminance noise reduction	396
Color noise reduction	398
Noise-reduction tips	398
Color noise corrections	399
Color Smoothness slider	400
Selective noise reduction	402
Selective moiré reduction	403
Moiré removal on non-raw images	405

7 Exporting from Lightroom 407

Opening images in Photoshop	408
The Edit in Photoshop options	408
Edit in Adobe Photoshop	409
Edit in additional external editing program	410
Opening non-raw images in an external editing program	411
Creating additional external editor presets	411
External editing file-naming options	412
The file format and other file settings options	412
Camera Raw compatibility	413
How to use the external edit feature	414
Going from Lightroom to Photoshop to Lightroom	416
Extended editing in Photoshop	420
Linking Lightroom photos from Photoshop as Smart Objects	423
Exporting from Lightroom	424
Export presets	424
Export Location	424
Exporting to the same folder	426
File Naming	428
File Settings	428
Image Sizing	429
DNG export size options	430
When to interpolate	431
Output Sharpening	432
Metadata	432
Watermarking	433
Creating new watermark settings	434
Post-Processing	435

Adding export actions in Lightroom	436
Exporting catalog images to a CD or DVD	440
Exporting catalog images as email attachments	441
Third-party Export plug-ins	444
Exporting video files	445

8 Printing **447**

The Print module	448
Layout Style panel	450
Image Settings panel	450
Layout panel	453
Margins and Page Grid	454
Guides panel	455
Multiple cell printing	456
Page panel	458
Adding a photographic border to a print	460
Page Options	462
Photo Info	463
Picture Package and Custom Package	464
Image Settings panel	464
Rulers, Grid & Guides panel	464
Cells panel	464
Custom Package layout style	468
Picture Package/Custom Package Page panel	471
Page Setup	472
Print resolution	473
Print Job panel	474
Print job color management	474
The Lightroom printing procedure	474
Managed by printer print settings (Mac)	475
Managed by printer print settings (PC)	476
Print Adjustment controls	477
Print	478
Printing modes	479
Print sharpening	479
16-bit output	480
Print to JPEG File	480
Custom profile printing	481
Managed by Lightroom print settings (Mac)	482
Managed by Lightroom print settings (PC)	483
Rendering intent	484

Soft proofing for print output	485
Why what you see isn't always what you get	485
Soft proofing in practice	487
Before and Proof preview	488
Before state options	492
Saving a custom template	493

9 Presenting your work 495

The Book module	496
Creating a new book	497
Book Settings panel	498
PDF and JPEG book export	499
Preview panel	499
Toolbar	500
Auto Layout panel	500
Auto Layout Preset Editor	500
Editing the book pages	502
Editing the cover pages	504
Page panel	506
Marking page layouts as favorites	506
Adding page numbers to a layout	506
Saving custom page layouts	506
Guides panel	507
Cell panel	508
Text panel	508
Text box layouts	508
Adding auto text	509
Type panel	510
Type panel Character controls	510
Target adjustment tool options	512
Type panel Frame controls	512
Background panel	512
Soft proofing before printing	513
Publishing your book	513
The Slideshow module	514
The Slide Editor view in the content area	516
Layout panel	517
Options panel	518
Overlays panel	520
Creating a custom identity plate	521
Adding custom text overlays	522
Working with the anchor points	524

Backdrop panel	526
Titles panel	528
Music panel	529
Playback panel	530
Pan and zoom options	530
Playback screen and quality settings	531
Manual mode	531
Play and preview	531
Navigating slideshow photos	532
Impromptu slideshows	532
Slideshows and selections	532
Template Browser panel	533
Creating a Slideshow collection	533
Exporting a slideshow	534
Exporting slideshows to PDF	535
Exporting slideshows to JPEG	536
Exporting slideshows to video	536
Exporting a timelapse video	537
The Web module	538
Layout Style panel	540
The Lightroom HTML and HTML5 galleries	540
Lightroom HTML gallery (default) layout	541
Lightroom Grid (HTML5) Gallery layout	542
Third-party gallery styles	543
Site Info panel	544
Color Palette panel	545
Choosing a color theme	545
Appearance panel	547
Appearance settings for the HTML gallery	547
Appearance panel settings for the HTML5 gallery	548
Image Info panel	549
Adding titles and captions	549
Customizing the title and caption information	550
Creating a custom Text template	552
Output Settings panel	554
Previewing web galleries	554
Image appearance in Slideshow and Web modules	555
Slideshow module colors	555
Web module colors	555
Exporting a web gallery	556
Uploading a web gallery	557
Managing your uploads	561

Template Browser panel.....	561
Creating a web collection	561

10 Managing your photos in Lightroom 563

Working with metadata	564
The different types of metadata.....	564
A quick image search using metadata	566
Metadata panel.....	568
Metadata panel view modes	568
General and EXIF metadata items	570
File Name	570
Sidecar Files	570
Copy Name.....	570
Metadata Status.....	572
Cropped photos	573
Date representation	573
Capture time editing	573
Camera model and serial number.....	574
Artist EXIF metadata.....	574
Custom information metadata	575
Metadata presets.....	576
Editing and deleting metadata presets.....	578
IPTC metadata.....	578
IPTC Extension metadata	580
A more efficient way to add metadata.....	581
Metadata editing and target photos.....	582
Mail and web links	584
Copyright status	585
Keywording and Keyword List panels.....	586
Ways you can add new keywords.....	588
Keeping metadata private.....	588
Synonyms: The hidden keywords.....	589
Applying and managing existing keywords.....	590
Auto-complete options	590
Removing keywords.....	592
Keyword hierarchy	592
Keyword filtering.....	593
Importing and exporting keyword hierarchies.....	593
Implied keywords.....	594
Keyword suggestions	595
Keyword sets.....	596
Creating your own custom keyword sets	597

The Painter tool.....	598
Painter tool in Target Collection mode.....	600
People view mode.....	600
Single Person view mode.....	606
Expanding and collapsing stacks.....	606
People view mode Toolbar.....	607
Person keywords.....	608
Exporting Person keywords.....	610
Photo filtering and searches.....	611
Filtering photos in the catalog.....	611
Three ways you can filter the catalog.....	612
Filtering photos via the Filmstrip.....	613
Adding folders as favorites.....	614
Filtering flagged photos.....	614
Filtering options.....	614
Creating refined color label selections via the Filmstrip..	614
Color label filtering.....	615
Virtual copy and master copy filtering.....	617
Subfolder filtering.....	618
Making filtered image selections.....	619
Filter bar.....	620
The Filter bar layout.....	621
Text filter searches.....	621
Search rules.....	622
Combined search rules.....	623
Fine-tuned text searches.....	623
Attribute filter searches.....	624
Metadata filter searches.....	624
Metadata filter options.....	625
Metadata filter categories.....	626
Locating missing photos.....	627
Custom filter settings.....	628
Empty field searches.....	628
No content searches.....	629
Advanced searches.....	631
Publishing photos via Lightroom.....	633
Saving and reading metadata.....	637
Saving metadata to the file.....	639
Tracking metadata changes.....	639
XMP read/write options.....	641
Where is the truth?.....	644
Synchronizing the metadata settings.....	645

Sorting images	646
Sort functions	647
The sort by label text solution	649
Geotagging images	650
GPS devices	650
Embedding GPS metadata in a photo	651
Reverse geocoding	652
The Map module	652
Navigation	653
Location filter bar	654
Loading GPX tracklogs	654
Matching photos to a recorded tracklog	655
Editing pins	657
Manually geotagging photos in the Map module	658
Permanently reverse-geocoding images	660
Exporting GPS-encoded files	660
Saved Locations panel	661

Appendix

Lightroom preferences and settings ... 663

General preferences	664
Splash screens	664
Updates	664
Catalog selection	665
Import options	665
Completion sounds and prompts	666
Presets preferences	666
Camera-linked settings	667
Location section	667
Lightroom Defaults section	667
External Editing preferences	668
File Handling preferences	668
Import DNG Creation	668
Convert and export DNG options	671
DNG compression	671
DNG with lossy compression	672
Checking DNG metadata status	672
Validating DNG files	673
Reading Metadata options	674
Filename generation options	674
Camera Raw and video cache settings	674

Interface preferences	675
Panel end mark	676
Custom panel end marks	676
Creating a custom splash screen	677
Panel font size	677
Lights Out	678
Background	678
Keyword entry	678
Filmstrip preference options	678
Interface tweaks	679
Lightroom mobile preferences	680
Lightroom mobile in use	683
What Lightroom mobile can and cannot do	684
Lightroom mobile refinements	685
Setting up a synchronized collection	686
Lightroom mobile collections	688
Lightroom Web view	689
Managing Lightroom Web view via Lightroom desktop	691
Uploading files via Lightroom Web	693
Removing photos from a collection via Lightroom Web view	695
Lightroom settings and templates	697
The Lightroom preference file	697
Accessing saved template settings	698
Customizing the Lightroom contents	699
Hacking the Lightroom contents	699
Lightroom previews data	701
System information	702
The ideal computer for Lightroom	702
RAM	703
Graphics card	703
Hard drives	703
Drive configurations	704
Striped RAID	704
Mirrored RAID	704
A mirror of stripes	705
RAID 5	705
Just a bunch of disks	705

Index **707**



4. As was pointed out in the main text, you can use the Painter tool to apply things other than just keywords. In this example, the Painter tool is currently in Settings mode. When this mode is selected, you will see a menu list of saved Develop presets. If on the other hand, you were to select Rotation, the menu would change to let you select a specific rotation or allow you to choose a painter setting that would flip an image. If Metadata is selected, the menu list will let you choose from presaved metadata templates. And likewise, if Rating, Pick, or Label is selected, you are also offered another choice of settings to use.

Painter tool in Target Collection mode

When the Painter tool is set to Target Collection mode, it can be used to add photos to whatever is the current target collection. This is normally the Quick Selection in the Catalog panel, but you can change this to any other collection instead (see page 145).

People view mode

Lightroom CC / Lightroom 6 now has a face-tagging feature that is able to automatically identify faces in the catalog images and can be trained to recognize named individuals, add face regions to individual photos, and create Person keywords that can automatically be added to the Keyword List panel inside a designated parent keyword.

The face-tagging process takes place in stages, which starts with the face recognition. Lightroom makes use of the same special face-recognition technology that is used in Photoshop Elements to identify face shapes in each image. This requires the photos in the catalog (or Filmstrip selection) to first of all be indexed. This is a process whereby Lightroom builds a record of each image in a form that the face-recognition engine can use to analyze for faces in images. Indexing can be turned on for the whole catalog by checking the “Enable automatic people finding in the background” option in the Catalog Settings Metadata section, as well as via the new Activity Center. For photos that are currently offline, Lightroom automatically indexes them the next time they come back online and Lightroom is launched. If indexing is turned off, it will index only the selected source whenever you enter the People view, or whenever you activate the Draw Face tool in the Loupe view for the current photo. When this has been done and you go to the People view mode in the Library module, Lightroom displays a view of thumbnails showing all the possible face matches for that particular selection of images in an Unnamed People section. It adds face regions to each identified face in each image and, from there, it is up to the user to identify the faces and enter names manually. As you identify a face and give it a name, Lightroom attempts to identify other identical faces. From there you have the job of clicking to approve the name suggestions as being correct, or rename and look for further unnamed people in the Unnamed People section and identify them accordingly. That is how it is supposed to work, and Lightroom does seem mostly able to spot regular faces. On the other hand, Lightroom can still miss obvious matches, or include all kinds of picture elements as faces, but you can always choose to delete the face region for such photos to remove them from the equation.

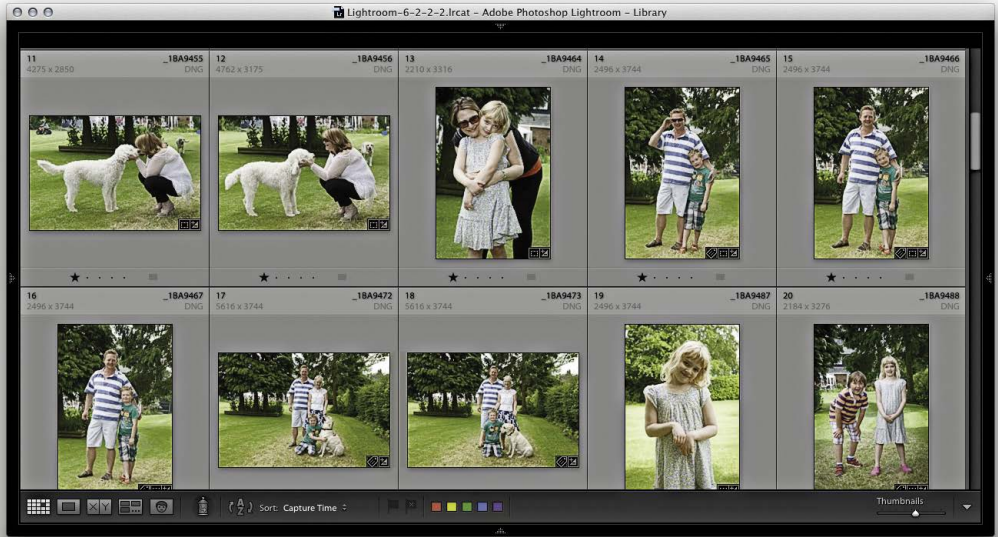
Ultimately, this face-tagging feature requires a significant amount of user input in the early stages in order to familiarize Lightroom with the people you photograph most often. The more you use this feature, though, the easier it becomes for Lightroom to automatically recognize the people seen in your photographs and name and keyword them automatically. That is the theory. In practice, you will have to decide whether the effort of all this input work is worth it compared to the manual method of visually identifying people and manually entering keywords, which, if these are regular people you photograph, Lightroom will be able to auto-complete anyway. The intended benefits of face tagging are to have faces recognized automatically immediately after importing and to semi-automate the metadata-adding process. In addition to this, it can pinpoint where the faces are in a picture. So, rather than just have keywords that name the individuals in a photograph, it can add a frame around each face, which identifies each individual person in the shot. Let’s now take a look at the face-tagging controls and the steps used to identify faces in a series of pictures.

NOTE

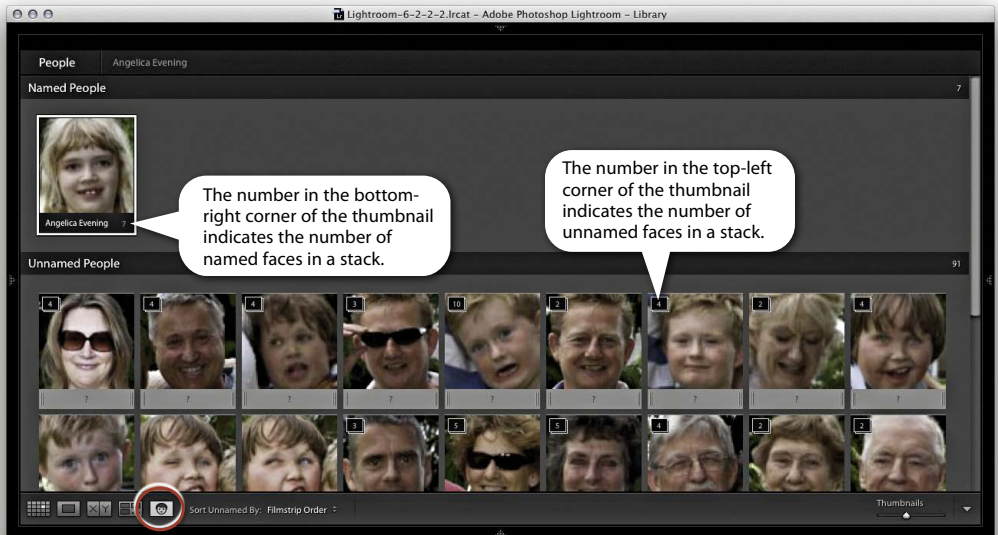
The index will build faster if you have Smart Previews available. You can monitor the progress via the Activity Center. The indexing process involves reading the raw data from disk, so if you happen to be doing something else that involves reading the raw data, such as converting to DNG, or building Smart Previews, the indexing process can happen simultaneously and get a free ride. Failing that, if there are embedded previews that are sufficiently large enough (greater than 1024 pixels along the longest edge), Lightroom will use those. Face info search data is also included when importing from another catalog and when creating a virtual copy.

TIP

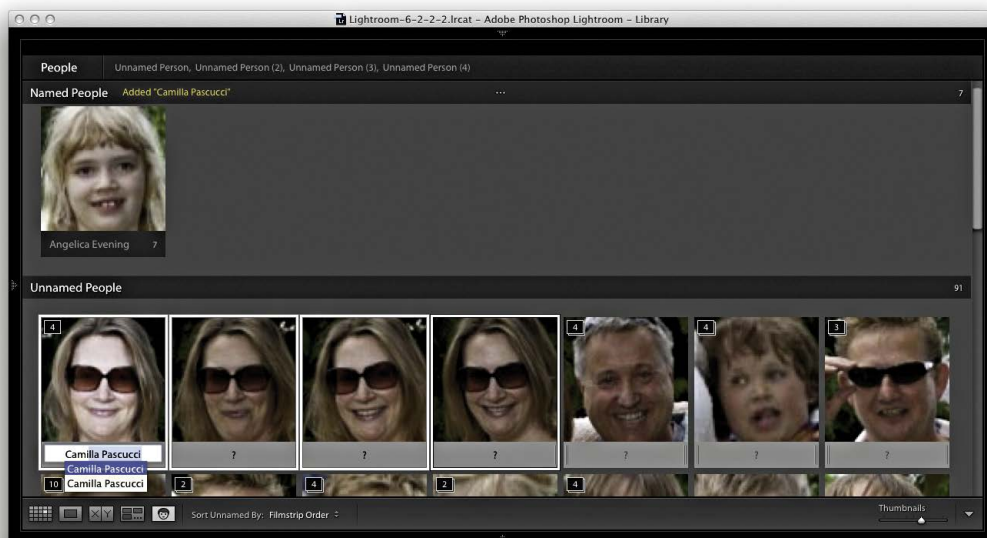
You can click the People button to switch to the People view, and click the People button again to switch back to the Grid view.



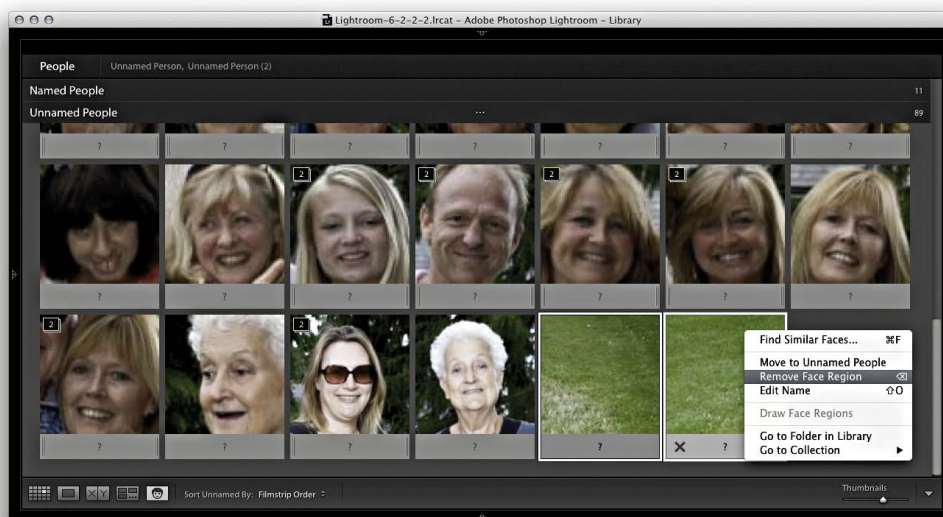
1. Here is a Library module Grid view of photographs taken at a garden party. The photographs at this stage were untagged.



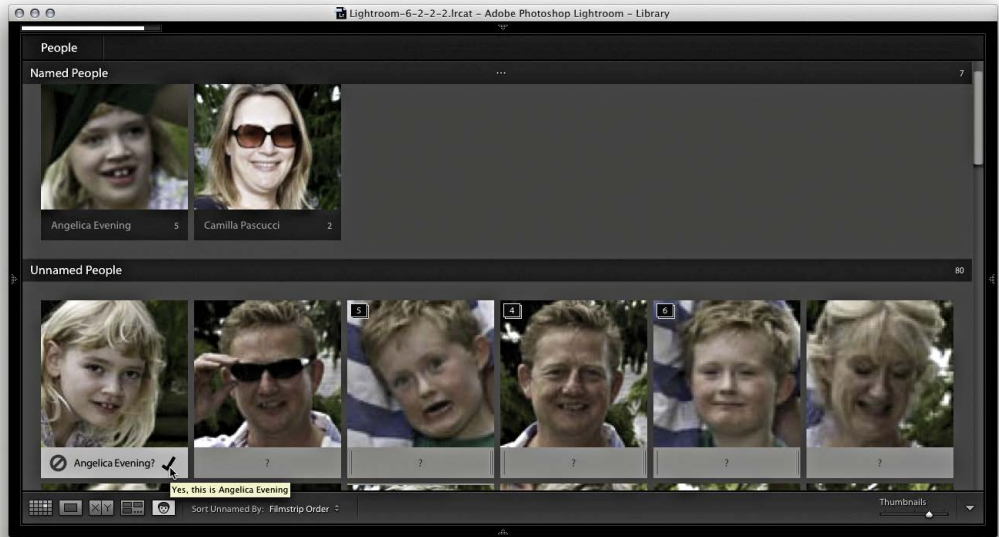
2. I switched to the People view by clicking the People view button (circled). Alternatively, I could choose View ⇨ People, or use the **P** shortcut. So far, Lightroom recognized just my daughter, which I clicked to confirm and added her to the Named People section. If you hold down the **Alt** key and pan the mouse over a face stack, it shows a preview of all the faces that are in that stack.



3. Here I made a selection of matching faces in the Unnamed People section and clicked in the text field below (you can also use the **⇧ Shift** **O** shortcut) to enter text to identify as a new person and add to the Named People section. Lightroom will auto-complete as you type. When you are editing single faces and you press **Return**, this automatically selects the next face and highlights the text field. You can also use **⌘** (Mac)/**Ctrl** (PC) + arrow to progress from one face to the next.



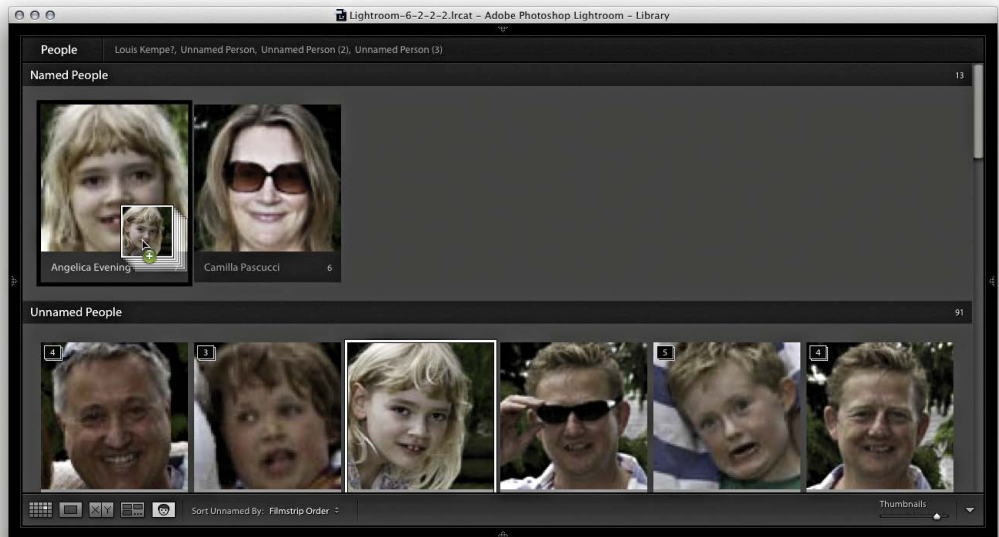
4. Lightroom will very likely produce some false results. These you can manage by hitting **Delete**, clicking the X button on the bottom of the thumbnail, or making a selection and using the contextual menu to select Remove Face Region.



NOTE

The placement of the confirm and cancel buttons is reversed on the PC.

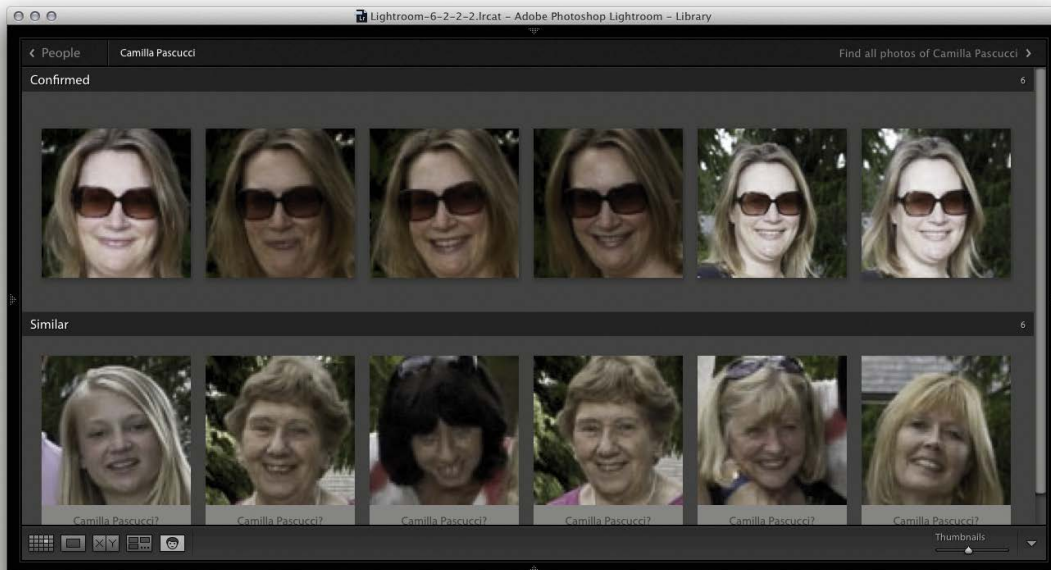
- Having begun to train Lightroom to recognize certain faces, I could hover over a face in the People view and click the cancel icon to reject and delete the face region or the check-mark icon to confirm the named-face suggestion and add this face to the Named People section.



- Another way to manage faces in the Unnamed People section is to make a selection of faces and drag these across to a named face in the Named People section. This names the selected photos. You can also drag photos between sections to take, say, a photo from the Named People section and drag it to the Unnamed People section (where it will become Unnamed again).



7. In this screen shot, I had carried out most of the naming, but there were still some photographs left over where the people were unnamed.



8. Here I double-clicked a named face to go to the Single Person view. You can also do this by clicking the keyword name that appears at the top (circled in Step 7). At the same time, Lightroom will suggest similar face suggestions in the section below. However, in this instance, none of these was correct.



NOTE

The draw face region bounding box is compliant with the Metadata Working Group standard specifications for face regions. So, faces metadata information can be exported from or imported into Lightroom. Some cameras already encode detected faces this way.

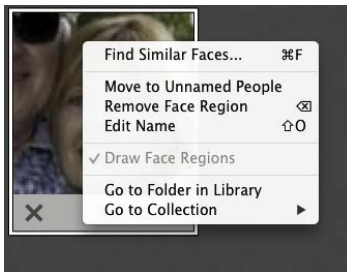


Figure 10.50 *The Faces contextual menu.*

9. I then double-clicked a face in the Single Person view to switch over to the Loupe view in the Library module to reveal the face regions, which as you can see, identified the individual faces and confirmed that keywords had been added. Here the Draw Face tool button is activated (circled) and when active can be used to marquee-drag and manually define new face regions. Clicking the Draw Face tool button allows you to hide all the face regions and also revert to regular Loupe view mode zoom behavior.

Single Person view mode

As you manage the photos in the People view mode, the name of the person (or persons) you have selected in the Named People section appears in the top bar (see Figure 10.51). When you click a name, this takes you to the Single Person view mode, where the full number of confirmed faces can be seen (Figure 10.52). Below this is a Similar section, where, as you roll over the faces, you can click the Confirm button to add it to the Confirmed section (even if there is no name suggestion for the face). Right-clicking a face in People view opens a contextual menu (see Figure 10.50). You can use this to choose Find Similar Faces (⌘F) [Mac] or (Ctrl)F [PC]), move to Unnamed People, Remove Face Region, or choose Go to Folder in Library, or Go to Collection to go to the collection that contains the photo. The Find Similar Faces item is also available via the contextual menu in the Loupe view when the Draw Face tool is active and will take you to a Single Person view for that face.

Expanding and collapsing stacks

You can use the (S) key to expand or collapse a stack in the People view, or click and hold (S) to expand and release to collapse again. Or, you can use the Undo command to revert.



Figure 10.51 This shows the top bar in the People view mode, where if you click on the selected person's name, you are taken to the Single Person view shown below in Figure 10.52.

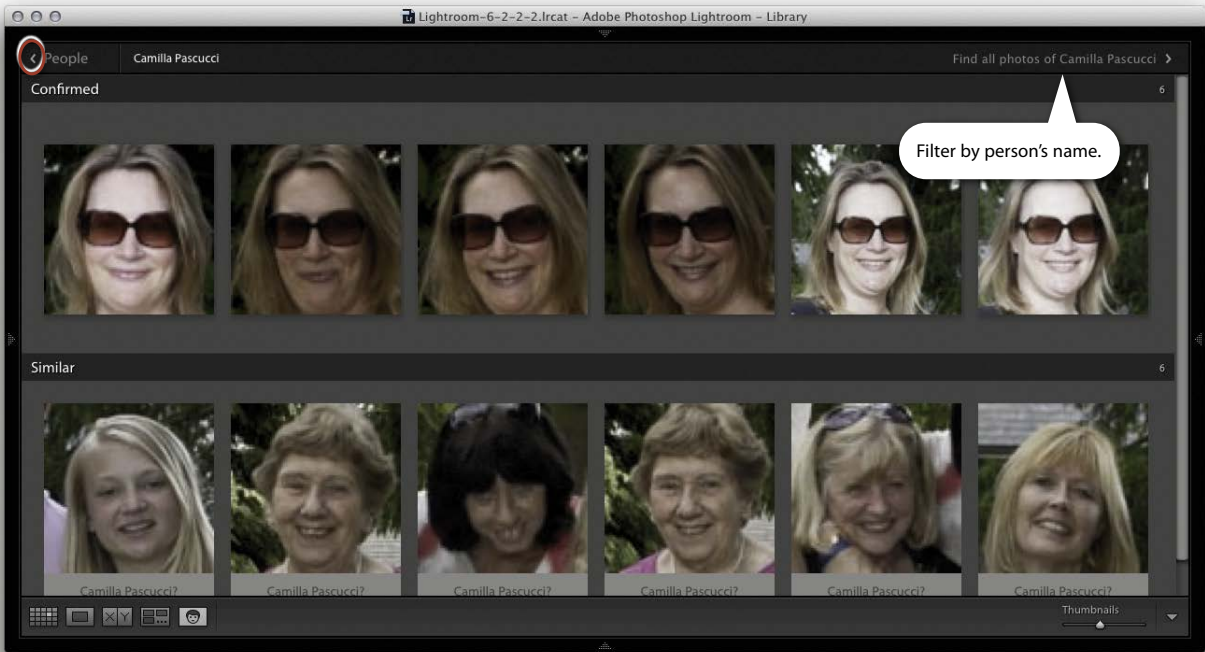


Figure 10.52 This shows the Single Person view. You can click the arrow (circled) to return to the People view mode again. Click "Find all photos..." to jump to a Library module Grid view filtered selection.

People view mode Toolbar

The People view Toolbar is shown in **Figure 10.53**. The Sort menu can be used to manage how the faces are organized. From the menu here, you can choose to sort by Suggested Name, Filmstrip Order, Stack Size, or Popular Names.



Figure 10.53 This shows a close-up of the People view Toolbar Sort menu options.

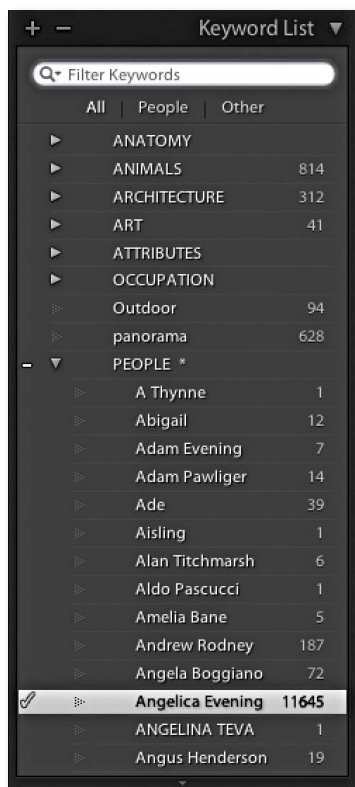


Figure 10.54 This shows the Keyword List panel with the Filter keywords active and filter categories below.

Person keywords

As you add face names, you will simultaneously create keywords, which by default, will be added at the root level to the Keyword list. If you want the person keywords you create to be more manageable, I suggest you use the contextual menu shown in **Figure 10.55** to enable “Put New Person Keywords Inside this Keyword” for a specific Keyword group, such as (in this instance) *PEOPLE*. With this scenario, all person keywords you create will automatically become children of the *PEOPLE* keyword, and an asterisk will appear after the target keyword name. You can drag a face from the People view mode to the Keyword List panel as a shortcut for applying a correct people keyword. Similarly, you can also drag a person keyword to a face in the People view mode to apply.

You will also notice in the contextual menu shown in Figure 10.55 that you can choose Convert Keywords to Person Keywords. This means where you have previously assigned a keyword with someone’s name, you can convert this to a person keyword. You can do this for single or multiple selected keywords. You can even select a parent keyword and convert it into a Person keyword, and all of the associated child keywords will also be converted. What happens exactly is that this step adds the keyword to the person keyword list, but will not necessarily always add face regions to the photos (see Step 3 on page 610). But where a face region gets added and you enter the first few letters of that person’s name, Lightroom will now know to auto-complete as a known person keyword.

In **Figure 10.54**, you can see that the Keyword List panel now contains filter options that allow you to filter by All keywords, by Person keywords, or by all Applied keywords.

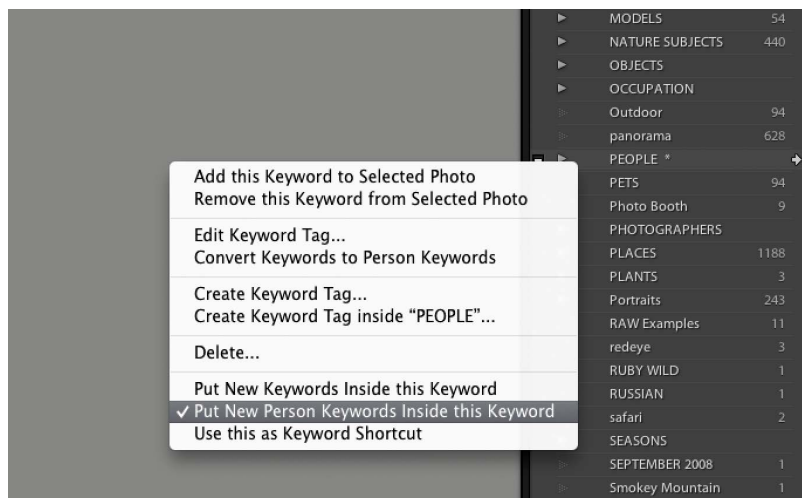
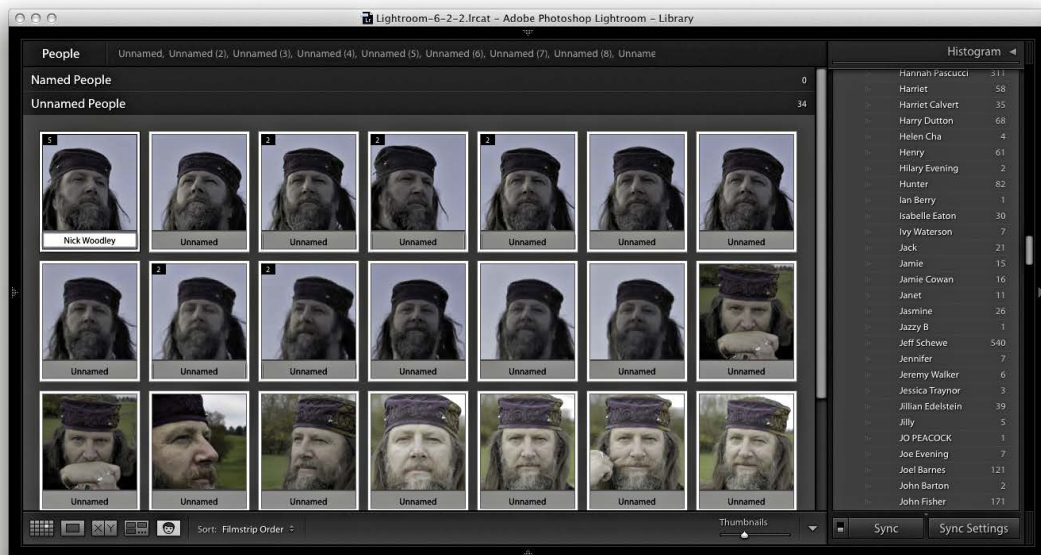


Figure 10.55 The Keyword List contextual menu includes an option to “Put New Person Keywords inside this Keyword.” When this option is activated, you will see an asterisk appear next to the keyword name.



1. In this example, I wanted to convert an existing, regular keyword to become a Person keyword. First, I clicked the arrow next to the keyword *Nick Woodley* to load all of the photos with this keyword into Library Grid view. Next, I right-clicked the regular keyword to access the contextual menu and selected Convert Keywords to Person Keywords.



2. I then clicked the People button to switch to People view. At this stage in People view mode, it had assigned face regions to the photos, which now needed confirming. I selected all, typed in *Nick Woodley* to one of the selected faces, and hit **[Return]**.

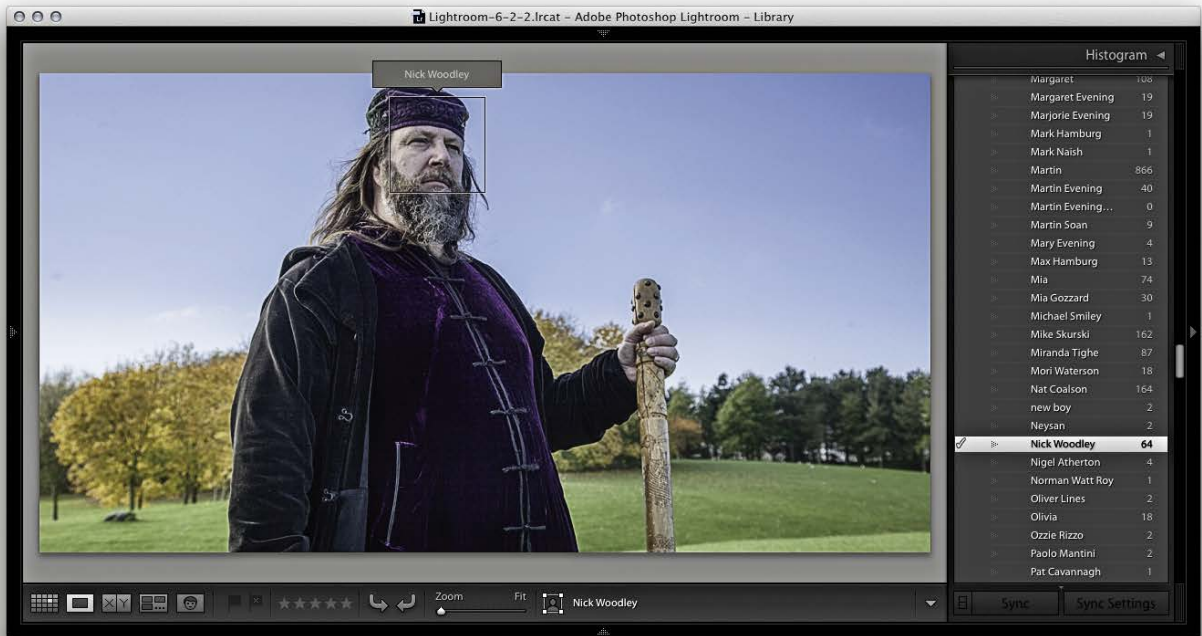


Figure 10.56 In the Loupe view, with the Draw Face tool active, you can click a suggested face region name and click to confirm or reject.

NOTE

As you help Lightroom by identifying the names of people, you can train it to be better at recognizing that person in the future. However, this happens only where there are clearly recognizable facial features. So, if the subject you name happens to be wearing dark sunglasses, this will not deprecate the Lightroom face recognition process.

3. Occasionally, automatic face detection will fail to find a face in some photos. In this example, I double-clicked one such photo to open in Loupe view (Figure 10.56). I then mouse-clicked the Draw Face Region button to activate the region drawing tool. Next, I mouse-clicked the photo and dragged the region drawing tool over the face. Lastly, I began typing the first few letters of Nick’s name. Since the name was a known Person keyword Lightroom auto-completed the name.

Exporting Person keywords

When you export photos from Lightroom (as discussed in Chapter 7), you have the option to exclude exporting the people keywords you have added. It does not matter how you choose to organize your keyword list hierarchy, because Lightroom already identifies the (face-tag generated) people keywords as a separate class. By default, Lightroom does not include Person keywords in an export. If you wish to override this privacy mode, you can do so by unchecking the Remove Person Info option shown in Figure 10.57. When unchecked, the metadata is saved as a keyword and also to the Person Shown section of the IPTC metadata.

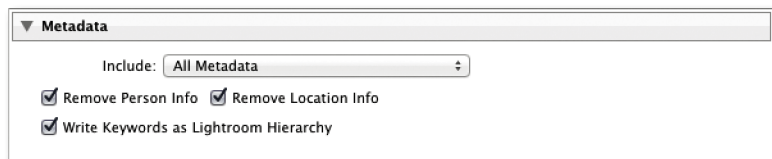


Figure 10.57 The Metadata section of the Lightroom Export dialog.

Index

1:1 previews, 114, 116, 379, 396
16-bit printing, 480
16-bit processing, 152, 429
32-bit HDR files, 196
64-bit processing, 10

A

actions, export, 436–439
Activity Center, 38–39
Address Lookup option, 38
Adjustment brush, 298–313
 Auto Mask option, 302–303, 304, 306
 Clarity adjustments, 312–313
 Color effect, 306–307
 contextual menu, 300
 editing brush strokes, 300
 initial options, 298–300
 moiré reduction, 403–405
 pin position/edits, 300, 314
 previewing stroke areas, 304
 saving effect settings, 300
 selective noise reduction, 402–403
 Shadows adjustments, 310–311
 Sharpness adjustments, 312–313
 Soften Skin effect, 304–305
 Temp and Tint adjustments, 308–309
Adobe Bridge. *See* Bridge program
Adobe Camera Raw. *See* Camera Raw
Adobe Color CC, 545
Adobe Color Engine (ACE), 482
Adobe Creative Cloud, 1, 7
Adobe IDs, 9, 680
Adobe Photoshop. *See* Photoshop
Adobe Reader, 535
Adobe Revel, 683
Adobe RGB color space, 117, 189, 412, 428–429, 438, 555
Adobe Standard profile, 272, 274
Amount slider
 Lens Vignetting, 265
 Post-Crop Vignetting, 266
 Sharpening controls, 380–381
anchor points, 524–525
Andreas, Peter, vi
Aperture Importer plug-in, 58
aperture information, 626–627
Appearance panel (Web module), 538, 547–548
 HTML gallery settings, 547
 HTML5 gallery settings, 548
Apply During Import panel, 49
Armes, Timothy, 444
artist name metadata, 574–575
aspect ratios, 170–171, 517, 627
Aspect Ratios overlay, 171
attribute filter searches, 624
Audio Balance slider, 530
Auto Align option, 197, 198
Auto Dismiss option, 174, 175
Auto Import Settings dialog, 60
Auto Layout option
 Book module, 496, 500–501
 Picture Package, 464–465, 467
Auto Layout Preset Editor, 500–501
Auto Mask option, 302–303, 304, 306
auto straightening, 168–169
Auto Sync mode, 294, 330
Auto Text options, 509
Auto Tone setting, 184–185, 197, 214, 216, 339
Auto White Balance setting, 176
automatic program updates, 664
Auto-Stack by Capture Time feature, 136–137

B

B&W panel (Develop module), 350, 353
 Auto button, 350, 354, 355
 manual adjustments, 356–358
 slider controls, 350, 352, 356, 360
 See also black-and-white conversions
Back Up Catalog dialog, 11, 70
Backdrop panel (Slideshow module), 514, 526–527
background operations in
 Lightroom, 39
Background panel (Book module), 512, 513
backgrounds
 book, 512, 513
 module interface, 678
 print layout, 458
 slideshow, 526–527
backups
 catalog, 69–72
 imported photo, 45
 optical disk, 99
 setup for, 71
 software for, 71–72
badges, thumbnail, 101, 143
Balance slider, 362
bandwidth issues, 683–684
Barroso, Clício, 304
Basic panel (Develop module), 174–213
 Auto Tone setting, 184–185
 Blacks slider, 182–184, 188, 195, 207, 235
 Clarity slider, 208–211
 Contrast slider, 181, 186
 Exposure slider, 180, 186, 193, 194, 195, 206

Basic panel (Develop module) (*cont.*)

- Highlights slider, 181–182, 187, 193, 234
- Histogram panel used with, 190–191
- image adjustment workflow, 185–188
- keyboard shortcuts for, 191
- overexposed image correction, 192–193
- Saturation slider, 212–213, 367
- Shadows slider, 181–182, 187, 194, 195, 234
- Temp slider, 178, 179, 354–355
- Tint slider, 178, 179, 354, 359
- Tone Curve adjustments and, 181, 232–235
- underexposed image correction, 194–195
- Vibrance slider, 212–213, 367
- White Balance tool, 174–179, 185, 233
- Whites slider, 182–184, 188, 206, 235

beauty retouching, 304–305

Before/After viewing modes, 278–283

- Copy settings buttons, 280
- keyboard shortcuts, 279, 280
- managing previews in, 280–283
- soft-proofing feature, 488–491

Behance website, 633–636

bit depth, 16, 412, 429

Black & White button, 350

black-and-white conversions, 349–369

- desaturating color for, 366–369
- Develop module controls, 350–351
- fine-tuning B&W images, 362–369
- infrared effect and, 359–361
- manual adjustments for, 356–358
- overview of options for, 352
- Saturation slider for, 350
- Split Toning panel for, 350, 361, 362–365
- Temperature slider for, 354–355
- Tint slider for, 354, 359

See *also* B&W panel

Blacks adjustment

- auto calculation, 183–184
- Basic panel, 182–184, 188, 195, 207, 235

blur effect, 394–395

Blurb photo books, 496

Bombich, Mike, 71

Book module, 496–513

- Auto Layout panel, 500–501
- Background panel, 512, 513
- Book Settings panel, 498–499
- Cell panel, 508, 512
- Guides panel, 507
- interface overview, 496–497
- Page panel, 506–507
- Preview panel, 499–500
- Text panel, 508–509
- Toolbar, 500
- Type panel, 510–512

Book Preferences dialog, 509

Book Settings panel, 496, 498–499

books, 496–513

- backgrounds for, 512, 513
- covers for, 503, 504–505
- creating new, 497–498
- editing, 502–505
- guides used for, 507
- multi-page view of, 500
- page layout options, 506–507
- PDF or JPEG, 499
- presets for, 500–501
- previewing, 499–500
- publishing, 513
- setup options, 498–499
- soft proofing, 513
- text options, 508–512
- type controls, 510–512

borders, 460–461, 462

Bridge program, 135, 581, 638, 642, 647–649

brush spots, 287–290, 291

bucket system, 99

Build Previews menu, 44

Build Smart Previews option, 80

burning CDs/DVDs, 440–441

Bury, Joshua, v, 4

C

Cadman, Rob, vi

calibrating the display, 153–157

- devices used for, 153–154
- steps in process of, 155–157
- white point and gamma, 154–155

Calvert, Terry, vi

Camera Calibration panel (Develop module), 272–277

- B&W conversions and, 367, 369
- camera profiles, 272–273
- creative uses of, 277, 367, 369
- custom calibrations, 274–277

Camera Raw

- cache size for, 674–675
- camera profiles, 272–273
- Lightroom compatibility with, 160–161, 332–335, 413
- processing images in, 4

See *also* raw files

cameras

- black-and-white mode on, 352
- connecting to computers, 61–62
- custom calibrations for, 274–277
- default Develop settings for, 346–347, 667
- importing files from, 34–37
- lens correction data from, 248
- metadata info about, 574–575, 626
- previews generated by, 116
- profiles for, 272–273
- tethered shooting with, 61–65
- transmitting photos from, 61

Campagna, Matthew, 543

candidate images, 120

Canon EOS Utility, 62, 574

captions

- viewing in Metadata panel, 568
- web gallery, 549–553

capture sharpening, 372–373, 431

capture time editing, 573–574

Carbon Copy Cloner, 71

Cast Shadow option, 518, 519

Catalog panel (Library module), 86, 139

- Catalog Settings dialog, 15, 69, 639, 643
- catalogs, 68–83
 - about, 68–69
 - backing up, 69–72
 - corrupted, 72, 638
 - creating new, 73
 - exporting, 75–77, 79
 - filtering photos in, 611–617
 - folders and, 54–55, 95–96
 - importing, 77–79
 - migrating libraries to, 58–59
 - opening existing, 74, 77
 - optimizing, 70
 - removing photos from, 149
 - selecting default, 665
 - sharing between computers, 81–83
 - Smart Previews for, 76, 77, 80–83
 - storage location for, 13, 14
 - upgrading, 11–13
- Causa, Ettore, 304
- CD/DVD exports, 440–441
- Cell panel (Book module), 496, 508, 512
- Cell Size/Spacing sliders, 454
- cells
 - Book module layout, 508, 512
 - Custom Package layout, 468–470
 - Picture Package layout, 464–467
 - Single Image/Contact Sheet layout, 453–457
- Cells panel (Print module), 464–467, 468–469
- centering prints, 454
- Chan, Eric, v, 4, 274, 373
- Channel menu, 228
- character controls, 510–511
- Check All button, 41, 331
- Choose Profiles dialog, 481
- chromatic aberration removal, 248–249
 - See also Defringe adjustments
- ChronoSync backup program, 71
- circle spots, 284, 285, 291
- Clarity adjustments
 - Adjustment brush, 312–313
 - Basic panel, 208–211
 - negative, 210–211, 304
 - Quick Develop panel, 216
- clipping
 - gamut, 242–243
 - highlight, 180, 189, 206
 - shadow, 189, 206–207
- Clone mode, Spot Removal tool, 284, 291
- close-up Loupe view, 104, 108, 109
- CMYK images, 46, 161, 438–439, 488
- collections, 139–148
 - book, 497–498
 - creating new, 140–141
 - duplicating, 143
 - editing, 144
 - Lightroom mobile, 688, 691–692
 - Lightroom Web view, 689–690
 - module-specific, 141–144, 496
 - print, 448, 470
 - public vs. private, 691, 692
 - publishing, 633–636
 - Quick, 139–140, 145
 - removing photos from, 149, 695–696
 - renaming, 144–145
 - saving creations as, 496
 - sets of, 146
 - slideshow, 514, 533–534
 - Smart, 146–148
 - synchronized, 21, 686–687
 - target, 145, 600
 - web gallery, 561
- Collections panel, 141, 146, 498, 561
- color adjustments
 - Adjustment brush, 306–307
 - desaturated color, 366–369
 - HSL controls, 238–243
 - hue-shift effects, 241–242
 - noise reduction, 398, 399–401
 - Saturation slider, 212–213
 - selective color darkening, 240–241
 - Split Toning panel, 364–365
 - Vibrance slider, 212–213
- color gamut considerations, 485–486
- color labels, 134–135
 - assigning to photos, 134, 135
 - Bridge label compatibility, 135, 647–649
 - filtering photos with, 135, 615–616, 626, 629–630
 - sort functions and, 647–649
- Color Management settings, 474, 481
- Color Palette panel (Web module), 538, 545
- Color panel controls, 238
- color picker dialog, 518
- Color Priority vignette, 268, 269
- color profiles, 153
- Color Smoothness slider, 400–401
- color spaces, 16, 153, 189, 412, 428–429, 438
- color themes, 545–546
- Color Wash controls, 526, 527
- ColorChecker chart, 176, 274
- colorimeter device, 153
- ColorSync option, 474, 477, 481
- Compact Cells view, 100, 101
- comparing images
 - Before/After viewing modes for, 278–283
 - Compare view for, 120–123, 127, 128
- compression options, 32, 535, 671–672
- computers
 - connecting cameras to, 61–62
 - setup for running Lightroom on, 8, 702–706
 - sharing catalogs between, 81–83
 - See also Macintosh computers; Windows computers
- Configure FTP File Transfer dialog, 557–558
- Constrain Aspect Ratio button, 170
- Constrain to Warp option, 168
- Contact Info/Gallery Author box, 544
- contact sheets, 456–457
- content area, 26, 41–43

- Contrast adjustments
 - Basic panel, 181, 186
 - Detail panel, 397
 - controlled vocabularies, 433, 586, 592, 593, 594
 - Convert Photos to DNG dialog, 32–33, 671
 - Copy as DNG option, 32, 37
 - Copy Name field, 570, 572
 - Copy Settings dialog, 336
 - copying
 - Before/After view settings, 280–283
 - Develop module settings, 336–337
 - importing photos by, 32
 - copyright information, 432, 578, 585
 - corruption
 - catalog, 72, 638
 - file, 37, 45
 - Cotterill, Harriet, vi
 - Create bar, 448
 - Create Collection dialog, 141, 145
 - Crop Frame tool, 166, 168–169
 - Crop Lock button, 170
 - Crop Marks option, 462
 - Crop Overlay mode, 164, 170, 263, 266
 - Crop Overlay tool panel, 165
 - cropping photos, 164–173
 - aspect ratios for, 170–171
 - auto straightening and, 168–169
 - basic steps for, 166–167
 - canceling crops, 172
 - Constrain to Warp option, 168
 - guide overlays for, 171, 172
 - metadata info about, 573
 - panorama cropping, 203
 - post-crop vignettes, 266–269
 - Quick Develop options, 173
 - repositioning crops, 171
 - rotating and, 164, 263
 - Custom Filter menu, 132
 - custom filters, 628–632
 - custom metadata, 575–581
 - Custom Package layout, 468–470, 471
 - custom profile printing, 481–484
 - customizing Lightroom, 22–23, 699–700
 - Cut Guides option, 471
 - Cycled Overlays option dialog, 171
- D**
- DAM Book, The* (Krogh), 99, 135
 - date/time information, 573–574, 626
 - dead pixels, 372
 - defaults
 - camera Develop setting, 346–347, 667
 - restoring in Lightroom, 667–668
 - Defringe adjustments, 250–256
 - eyedropper tool for, 251
 - global, 252–254
 - localized, 255–256
 - process for making, 250–251
 - Deghost Amount options, 200
 - deleting
 - history steps, 324
 - Lightroom mobile data, 681
 - metadata presets, 578
 - photos from disk, 149
 - templates, 493
 - See also removing
 - demosaic processing, 373, 374, 396
 - Density slider, 299
 - desaturated color adjustments, 366–369
 - Destination panel (Import dialog), 50–52
 - Detail panel (Develop module), 372
 - default settings, 375
 - Noise Reduction controls, 374, 396–401
 - Sharpening controls, 372, 373, 379–389
 - Detail slider
 - Noise Reduction controls, 397
 - Sharpening controls, 384–386, 387
 - Develop module, 5, 151–347
 - Adjustment brush, 298–313
 - Auto Tone setting, 184–185, 339
 - B&W controls, 350–369
 - Develop module (*continued*)
 - Basic panel controls, 174–213
 - Before/After viewing modes, 278–283
 - Blacks adjustment, 182–184, 188, 207
 - Camera Calibration panel, 272–277
 - Camera Raw compatibility, 160–161, 332–335
 - camera-specific settings, 346–347, 667
 - Clarity adjustments, 208–211
 - color adjustments, 238–243
 - Contrast adjustments, 181, 186
 - copying and pasting settings, 336–337
 - cropping procedures, 164–173
 - Detail panel, 372, 379–389
 - Develop Presets panel, 273
 - display calibration, 153–157
 - Effects panel, 266–271
 - Exposure adjustments, 180, 186, 192–195, 206–207
 - Graduated Filter tool, 314–318
 - HDR image adjustments, 199
 - highlight adjustments, 181–182, 187
 - Histogram panel, 189–191
 - History panel, 323–324
 - HSL controls, 238–243
 - image-processing engine, 152
 - interface overview, 162–163
 - Lens Corrections panel, 244–265
 - localized adjustments, 298–322
 - Loupe Overlay view, 110–113
 - Match Total Exposures command, 204–205
 - presets used in, 338–347, 375
 - process versions, 158–160
 - profile recognition, 153
 - Radial Filter tool, 319–322
 - Red Eye Correction tool, 295–297
 - retouching tools, 284–322
 - Saturation adjustments, 212–213
 - shadow adjustments, 181–182, 187
 - Snapshots panel, 324–327

- Develop module (*continued*)
 - Soft Proofing option, 485, 487–492
 - Spot Removal tool, 284–294
 - synchronizing settings, 219, 330–331
 - Tone Curve panel, 224–237
 - Tool Overlay options, 172, 291
 - Vibrance adjustments, 212–213
 - View options, 164
 - White Balance tool, 174–179, 185
 - Whites adjustment, 182–184, 188
- Develop Presets panel, 273
- Develop Settings menu, 49
- digital asset management (DAM) system, 564
- Discard 1:1 Previews option, 116
- display screen
 - calibrating, 153–157
 - dual-display setup, 126–129, 419
 - soft-proofing considerations, 485–487
 - tips on choosing, 153
- Distortion slider, 263
- DNG files, 8, 668–673
 - compression for, 32, 671–672
 - converting raw files to, 32–33, 277, 671
 - copying photos as, 32, 37, 668–671
 - exporting images as, 428, 430, 440, 671
 - metadata status for, 672
 - Photo Merge, 196, 197–199, 200
 - saving non-raw files as, 429
 - updating, 33, 670
 - validating, 673
 - XMP metadata in, 642, 644
- DNG Profile Editor, 274–277
- DPX video format, 445
- Draft Mode Printing option, 456, 479
- drag-and-drop import, 56–57
- Draw Face Region tool, 105, 108, 601, 606, 610
- Drobo storage system, 705
- drop shadows, 518

- droplets, Photoshop, 436–439
- dual-display setup, 126–129, 419
- Dutton, Harry, vi
- DVD/CD exports, 440–441

E

- Earney, Richard, 340, 698
- edge sharpening, 321–322
- Edit in Photoshop command, 409, 413
- Edit Metadata Presets dialog, 577, 578–580
- editing
 - books, 502–505
 - brush strokes, 300
 - capture time info, 573–574
 - collections, 144
 - external editor options for, 408–415
 - images in Photoshop, 408–423
 - metadata presets, 578–580
 - video files, 219–223
- Effects panel (Develop module), 266–271
 - Grain effects sliders, 270–271
 - Post-Crop vignette controls, 266–269
- email
 - exporting photos for, 441–443
 - links to websites in, 560
 - metadata links to, 584
 - preconfigured signature for, 560
 - web gallery links to, 544
- empty field searches, 628
- Eraser mode, 300
- EXIF metadata, 244, 245, 552, 568
- ExifTool editor, 575
- Expanded Cells view, 100, 101
- Export as Catalog dialog, 12, 75, 80
- Export dialog, 424, 425, 426, 430, 444, 610, 660
- exporting, 424–445
 - actions for, 436–439
 - bit depth options for, 429
 - books as PDFs or JPEGs, 499
 - catalogs, 75–77, 79
 - to CDs or DVDs, 440–441

- exporting (*continued*)
 - color space options for, 428–429, 438
 - as email attachments, 441–443
 - file settings for, 428–429
 - GPS-encoded files, 652, 660
 - keywords, 432–433, 594, 610
 - location options for, 424, 426–427
 - metadata options for, 432–433, 610
 - naming files for, 428
 - output sharpening for, 432
 - person keywords, 610
 - plug-ins for, 444
 - post-processing options for, 435
 - presets for, 424
 - to the same folder, 426–427
 - sizing images for, 429–431
 - slideshows, 534–537
 - video files, 445, 536–537
 - watermark options for, 433–435
 - web galleries, 556
- exposure
 - Basic panel adjustments, 180, 186, 192–195, 206
 - Histogram panel and, 190
 - Match Total Exposures command, 204–205
 - overexposed image correction, 192–193
 - Quick Develop panel adjustments, 215
 - underexposed image correction, 194–195
- Exposure slider, 180, 186, 193, 194, 195, 206
- external editing options, 408–415
 - file format/settings, 412
 - naming/renaming files, 412
 - Photoshop editing option, 409, 413
 - preference settings, 16, 408–409, 412
 - preset creation, 411
 - program selection, 410–411
 - steps for using, 414–415
- eyedropper tool, 251

Eye-Fi cards, 61, 651
Eye-One Photo, 154

F

Face Detection, 38
face-tagging feature. *See* People view mode
favorite folders, 614
Feather slider
 Adjustment brush, 298–299
 Post-Crop vignette, 266
 Spot Removal tool, 292
Fetch software, 557
File Format options, 16
file handling
 imported photos and, 44–46
 setting preferences for, 16, 668–675
File Handling panel (Import dialog), 44–46
File Renaming panel (Import dialog), 47–48
File Type filtering, 626
Filename Template Editor, 47, 412, 668
files
 corruption of, 37, 45
 organization of, 42–43
 saving metadata to, 637–639
Filmstrip, 27
 filtering photos via, 613
 navigating photos via, 124–125
 setting preferences for, 678–679
Filter bar, 26, 99, 620–632
 advanced searches, 631–632
 Attribute section, 624
 component layout, 621
 custom settings, 628–632
 Metadata section, 624–627
 searching with, 566–567, 621–627, 628–632
 shortcut for toggling, 620
 Text section, 621–623
filtering photos, 611–632
 attribute searches, 624
 catalog options for, 612
 collections based on, 146–148

filtering photos (*continued*)
 color labels for, 135, 615–616, 629–630
 custom settings for, 628–632
 Filmstrip options for, 613
 flags used for, 130, 614
 GPS data used for, 654, 661
 keywords used for, 593
 master copy filtering, 617
 metadata searches, 624–627
 rules defined for, 622–623, 628–630
 selections used for, 614, 619
 star ratings for, 132, 133
 subfolder filtering, 618
 text searches, 621–623
 toggling settings for, 611
 virtual copy filtering, 617
finding. *See* searching
FireWire connections, 61
flagged photos
 deleting rejects, 149
 filtering picks/rejects, 130, 614
 Flag icons indicating, 101
 rating picks/rejects, 130–131
flipping photos, 172
Flow slider, 299
folders
 catalogs and, 54–55, 95–96
 creating new, 94
 docked/undocked, 41
 exporting to same, 426–427
 favorite, 614
 hierarchy of, 87
 importing to, 35–36, 51, 52
 links to, 91
 managing, 87–88
 naming/renaming, 89, 559
 organizing, 97–99
 publishing photos to, 635
 synchronizing, 92–93, 333
 system, 88–90
 template settings, 698–699
Folders panel (Library module), 87–99
 adding new folders via, 94
 contextual menu, 52
 system folders and, 88–90

Foster, Nadia, vi
fractions, typographic, 679
Fraser, Bruce, vi, 270, 372, 387, 432
Friedl, Jeffrey, 444, 570
FTP programs, 557

G

galleries. *See* web galleries
gamma setting, 154–155
gamut clipping, 242–243
General preferences, 14, 664–666
Geotag Photos app, 650
geotagged images, 650–661
 creating, 650–651
 exporting, 652, 660
 filtering, 654, 661
 manually tagging, 658–659
 reverse geocoding of, 652, 660
 viewing and managing, 652–661
 See also Map module
Google Maps, 10
Gorman, Greg, 207
GPS metadata, 650–661
 embedding into photos, 651
 exporting files containing, 652, 660
 filtering photos by, 654, 661
 options for recording, 650–651
 reverse geocoding of, 652, 660
 See also geotagged images
GPU acceleration, 18–19
GPX tracklogs, 654–657
Graduated Filter tool, 314–318
 Brush option, 317–318
 example of using, 314–316
Grain effects sliders, 270–271
graphics card, 19, 703
grayscale conversions. *See* black-and-white conversions
grayscale previews, 380, 387
Grid cell badge, 81
Grid Gallery style, 540, 542, 545
Grid overlay, 110, 111, 171
Grid view, 41, 100–103
 navigating, 102–103
 options available in, 100–101

Grid view (*continued*)
secondary displays and, 127, 128, 129
shortcuts for, 104, 109
videos displayed in, 219, 220
working in, 106, 107
grouping photos, 136–137
guides
book, 507
print, 455, 464
Guides overlay, 110, 111
Guides panel
Book module, 496
Print module, 448, 455

H

H.264 video format, 445, 536
halo suppression, 384
Hamburg, Mark, iv, v, 2, 204, 238
hard drives, 703–706
Harvey, Phil, 575
HDR image creation, 196–199
Deghost Amount options, 200
Photo Merge process for, 197–199
HDR Merge Preview dialog, 198
Heal mode, Spot Removal tool, 284, 291, 294
Help menu, 24, 27, 162
hiding/showing
panels, 84
Toolbar, 26
hierarchy
folder, 87
keyword, 433, 592–593
high-density-pixel display support, 4, 41, 514
Highlight Priority vignette, 268, 269
highlights
clipping, 180, 189, 206
detail recovery, 187, 192
reflective vs. nonreflective, 206
Highlights adjustment
Basic panel, 181–182, 187, 193, 234
Tone Curve panel, 230
Histogram panel
Develop module, 189–191
Library module, 214
History panel (Develop module), 21, 323–324
Hogarty, Tom, v
Holbert, Mac, 208, 447
HSL / Color / B&W panel (Develop module), 238, 350
HSL controls (Develop module), 238–243
B&W conversion method, 367, 369
desaturated color adjustments, 366–369
false color hue adjustments, 241–242
overview of sliders and, 238
reducing gamut clipping with, 242–243
selective color darkening, 240–241
HTML galleries, 540, 541
Appearance panel settings, 547
Color Palette panel settings, 545
Site Info panel settings, 544
Title/Caption information, 549, 551
HTML5 galleries, 540, 542
Appearance panel settings, 548
Color Palette panel settings, 545
Site Info panel settings, 544
Title/Caption information, 549, 551
Hue sliders
HSL panel, 238, 239, 240, 241
Split Toning panel, 362
I
ICM Color Management, 474, 477, 481
identity plate
custom package layout, 470
customizing, 22–23
photo border options, 460–461
slideshow options, 520, 521
steps for creating, 458–459
web gallery options, 544
Identity Plate Editor, 22, 459, 461, 521, 528
Image Info panel (Web module), 538, 549–553
Image Settings panel (Print module), 448, 450–452
Picture Package layout, 464
Single Image/Contact Sheet layout, 450–452
image-processing engine, 151, 152
implied keywords, 594
Import dialog, 30–31
Apply During Import panel, 49
compact mode, 31
content area, 41–43
Destination panel, 50–52
expanded mode, 30, 31
File Handling panel, 44–46
File Renaming panel, 47–48
Import Presets menu, 52
Source panel, 40
Import DNG Creation options, 668–671
Import from Aperture dialog, 58
Import from Catalog dialog, 78
Import Photos dialog, 92, 93, 114
Import Presets menu, 52
importing photos, 29–65
Add method for, 54–55
Aperture Importer for, 58–59
Auto Import feature, 60
backing up and, 45
camera card imports, 34–37
catalog imports, 77–79
Develop settings and, 49
DNG conversion options, 32–33
drag-and-drop method for, 56–57
folder options for, 35–36, 51, 52
Import dialog options, 30–31, 40–52
keyword imports, 593–594
metadata info and, 36, 49, 578, 586, 587
organizing and, 42–43, 50
pixel limit for, 46
preferences for, 665
presets created for, 36, 52
previewing and, 44, 114–115

importing photos (*continued*)
 problems with, 44–45
 raw+JPEG options, 46
 renaming options, 47–48
 storage locations for, 50–52
 tethered shooting and, 61–65
importing video files, 46, 53
info overlay, 121
information
 camera, 574, 626
 copyright, 432, 578, 585
 date/time, 573–574, 626
 photographic, 463, 626–627
 title/caption, 549–553
 See also metadata
infrared effect, 359–361
inkjet printers, 447
Inside Lightroom website, 340, 698
installing/upgrading Lightroom, 9–13
interface, 2, 25–27
 customizing, 17, 676–679
 setting preferences for, 675–679
interpolation methods, 431
inverse searches, 623
IPTC metadata, 49, 568,
 578–580, 586
ISO settings
 metadata info on, 627
 noise reduction and, 398

J

Jardine, George, v, vi
JBOD storage system, 706
JPEG files
 books exported as, 499
 external editing options, 411
 moiré removal on, 405
 photos exported as, 428
 print jobs saved as, 478, 480
 slideshows exported as, 536
 specifying size limits for, 428
 web gallery images as, 554
 XMP metadata options, 641–644

K

kerning, 511
keyboard shortcuts, 3, 27, 162
Keyword List panel (Library
 module), 586, 587, 588, 589,
 592–594, 608
Keywording panel (Library module),
 586, 587, 590, 594–597
keywords, 586–597
 adding to photos, 588
 applying existing, 590, 591
 auto-completion of, 590
 entry preferences for, 678
 exporting, 432–433, 594, 610
 filtering, 593
 hierarchy of, 433, 592–593
 implied, 594
 importing, 593–594
 Painter tool and, 598–600
 person, 608–610
 private, 588
 removing, 592
 sets of, 596–597
 suggested, 595
 synonyms of, 589
 See also metadata
Knoll, John, 4, 6
Knoll, Thomas, v, 4, 6, 196,
 208, 238
Kost, Julieanne, v
Krogh, Peter, 98, 99, 135

L

Lab color values, 191
labeling photos. *See* color labels
Layout Image overlay, 112–113
Layout panel
 Print module, 448, 453–455
 Slideshow module, 514, 517
Layout Style panel (Print module),
 448, 450
 Custom Package layout, 468–470
 Picture Package layout, 464–467
 Single Image/Contact Sheet layout,
 450–463

Layout Style panel (Web module), 538
 HTML gallery (default) layout,
 540, 541
 Lightroom Grid (HTML5) gallery
 layout, 540, 542
 third-party layout styles, 543–544
LCD displays, 153, 485
Lens Corrections panel (Develop
 module), 244–265
 chromatic aberration removal,
 248–249
 Defringe adjustments, 250–256
 lens profile corrections, 244–247
 Lens Vignetting adjustments,
 263–265
 Transform perspective adjust-
 ments, 263
 Upright adjustments, 257–262
Lens Profile Creator program, 245
Lens Vignetting sliders, 263–265
lenses
 metadata info on, 244, 245, 626
 profiles for, 244–247
Library module, 67, 84–149
 Catalog panel, 86, 139
 color labels, 134–135
 Compare view, 120–123
 dual-display setup, 126–129
 Filmstrip, 124–125, 613
 Filter bar, 26, 99, 620–632
 Folders panel, 87–99
 Grid view, 100–103
 Histogram panel, 214
 Keyword List panel, 586, 587, 588,
 589, 592–594, 608
 Keywording panel, 586, 587, 590,
 594–597
 Loupe Overlay view, 110–113
 Loupe view, 104–109
 Metadata panel, 568–585
 Navigator panel, 86, 109
 overview of, 84–85
 Painter tool, 145, 598–600
 panel controls, 84
 picks/rejects, 130–131
 previews, 114–117

- Library module (*continued*)
 - Publish Services panel, 633–636
 - Quick Collections, 139–140
 - Quick Develop panel, 173, 214–223
 - rating images in, 130–135
 - selection options, 138
 - shortcuts for, 27
 - Sort menu, 646–649
 - stacks, 136–137
 - star ratings, 132–133
 - Survey view, 118–119
 - Toolbar, 86
 - video functions, 219–223
 - Library View Options dialog, 100, 105, 640
 - Lightroom CC / Lightroom 6
 - versions, 1
 - Lightroom Configuration
 - Manager, 570
 - Lightroom mobile, 680–696
 - Delete All Data button, 681
 - Lightroom Web view and, 689–696
 - limitations of, 684–685
 - overview on using, 683–684
 - preferences for, 20–21, 681
 - recent refinements to, 685
 - steps for setting up, 680–682
 - synchronized collections, 21, 686–688
 - Lightroom Publishing Manager, 633
 - Lightroom RGB workspace, 152, 189
 - Lightroom Settings folder, 69
 - Lightroom Web view, 689–696
 - collections viewed in, 689
 - managing via Lightroom desktop, 691–692
 - removing photos from collections via, 695–696
 - steps for setting up, 689–690
 - uploading photos via, 693–694
 - Lights Out/Lights Dim modes, 678
 - links
 - email and web, 544, 560, 584
 - folder and image, 91
 - localized adjustments, 298–322
 - Adjustment brush, 298–313
 - Clarity slider, 304, 312–313
 - Color effect, 306–307
 - Defringe controls, 255–256
 - Graduated Filter tool, 314–318
 - Moiré slider, 403–405
 - Noise slider, 402–403
 - Radial Filter tool, 319–322
 - Shadows slider, 310–311
 - Sharpness slider, 312–313, 392–393
 - Temp and Tint sliders, 178, 308–309
 - Location Filter bar, 654
 - lock files, 69
 - Lock Zoom Position option, 108
 - lossy DNGs, 32, 672, 683
 - Loupe Overlay view, 110–113
 - Grid and Guides, 110–111
 - Layout Image feature, 112–113
 - Loupe view, 41, 104–109
 - navigating, 108–109
 - options available in, 105
 - secondary displays and, 126, 128, 129
 - shortcuts for, 104, 105, 109
 - videos displayed in, 219, 220
 - working in, 107
 - zoom views, 109
 - Luminance sliders
 - Detail panel, 396–397
 - HSL panel, 238, 240, 242, 243, 367, 369
 - Lyons, Ian, v
- ## M
- Macintosh computers
 - gamma setting on, 154
 - keyboard preferences on, 102, 126
 - Lightroom preferences on, 14–19, 34, 697
 - printer settings on, 472, 475, 478, 482
 - system requirements for, 8
 - Time Machine backups on, 71
 - magnification options, 108–109
 - Managed by Lightroom print settings, 482–483
 - Managed by Printer option, 474, 481
 - Map module, 652–661
 - GPX tracklogs, 654–657
 - Location Filter bar, 654
 - manual geotagging, 658–659
 - navigating, 653
 - pin markers, 657–658
 - Saved Locations panel, 661
 - See also geotagged images
 - margin settings, 453, 454–455
 - Masking slider, 387–389
 - master images, 328–329, 617
 - Match Total Exposures command, 204–205
 - Maximize PSD and PSB File
 - Compatibility option, 44
 - McCormack, Sean, vi, 460, 537
 - Media Pro, 68
 - megapixels, 702
 - memory cards, 34–37
 - menu bar, 25
 - metadata, 564–597, 637–645
 - camera info, 574, 626
 - capture time, 573–574
 - copyright status, 578, 585
 - custom information, 575–581
 - displayed in Metadata panel, 568, 570–575
 - DNG view mode for, 672
 - editing for multiple images, 582
 - efficient way of adding, 581
 - export options for, 432–433, 610
 - face-recognition, 606, 610
 - filter options for, 624–627
 - GPS coordinates as, 650–661
 - imported photos and, 36, 49, 578
 - keywords and, 586–597, 610
 - lens info, 244, 245
 - mail and web links, 584
 - presets, 49, 576–580
 - private, 588
 - saving to files, 637–639

metadata (*continued*)
 searching with, 566–567,
 624–627
 setting preferences for, 674
 status info, 333, 335, 572, 641
 synchronizing, 645
 target photos and, 582–583
 tracking changes to, 639–641
 types of, 564–565
 video file, 223
 virtual copies and, 328
 web gallery, 552, 554
 XMP space and, 637, 639,
 641–644

Metadata panel (Library module),
 568–585
 action arrows, 584, 585
 customizing data in, 575–581
 editing data in, 582–585
 information displayed in, 568,
 570–575
 view modes, 568–569, 571

Midpoint slider, 265, 266

Mirror Image mode, 109

mirrored RAID system, 704–705

missing photos, 627

mobile version of Lightroom. *See*
 Lightroom mobile

modules
 collections specific to,
 141–144, 496
 Lightroom design using, 2–3
 menu for selecting, 25, 699
 removing from Lightroom, 699
 shortcuts for, 3, 162
See also specific modules

moiré reduction, 403–405

monitor. *See* display screen

movies. *See* video files/clips

multiple cell printing, 456–457

music for slideshows, 529,
 530, 537

Music panel (Slideshow
 module), 529

My Pictures folder, 13, 14

N

naming/renaming
 collections, 144–145
 exported photos, 428
 externally edited photos, 412
 folders, 89, 559
 illegal characters for, 674
 imported photos, 47–48
 photo files, 47–48, 570
 snapshots, 324

Nash, Graham, 447

Navigator panel (Library module),
 86, 109

negative Clarity adjustments,
 210–211

negative sharpening effect,
 394–395

negatives
 exporting catalogs with/without,
 75–76
 importing catalogs without, 79

New Develop Preset dialog,
 338, 366

no content searches, 629–630

noise reduction, 396–403
 color, 398, 399–401
 luminance, 396–397
 selective, 402–403
 shadow, 378
 tips for, 398

nonreflective highlights, 206

numbered star ratings, 132–133

numbering sequences, 48

O

O’Hare, Sam, 394

Open Catalog dialog, 77

optical disk backups, 99

optimizing catalogs, 70

Options panel (Slideshow module),
 518–519

organizing
 folders, 97–99
 imported photos, 42–43, 50
 orphan works, 578, 585

Output Settings panel (Web module),
 538, 554

output sharpening, 375, 432

overexposed image correction,
 192–193

overlays
 crop guide, 171, 172
 Grid and Guides, 110–111
 identity plate, 520, 521
 Layout Image, 112–113
 Loupe Overlay, 110–113
 text, 520, 522–525

Overlays panel (Slideshow module),
 514, 520–525

P

Page Bleed view, 454

Page Grid area, 454

Page panel
 Book module, 496, 506–507
 Print module, 458–463

Page Setup dialog, 472

Paint Overlay vignette, 266–268

Painter tool, 145, 598–600

Pan and Zoom option, 530

panels
 end mark options, 676
 font size options, 677
 hiding/showing, 84
 solo mode for, 162
 working with, 26
See also specific panels

panorama creation, 200–203
 Photo Merge process for,
 201–203
 Projection options, 201

paper
 photo book, 498
 printer profiles for, 475, 483
 size settings for, 472

Pascucci, Camilla, vi, 594

PDF documents
 exporting books as, 499
 print files output as, 456, 478
 slideshows exported as, 534, 535

Pearce, James, vi

- People view mode, 600–610
 - how it works, 600–601
 - person keywords, 608–610
 - Single Person view mode, 606, 607
 - stack controls, 606
 - steps for using, 602–606
 - Toolbar, 607
- Perceptual rendering intent, 484
- performance issues, 4, 70, 674
- Performance preferences, 18–19
- person keywords, 608–610
- perspective corrections, 257–263
 - Transform controls, 263
 - Upright adjustments, 257–262
- Pet Eye mode, 297
- Pfiffner, Pamela, v
- photo galleries. *See* web galleries
- Photo Info templates, 463
- Photo Merge feature, 196–203
 - HDR image creation, 196–199
 - panorama creation, 200–203
- PhotoKit SHARPENER plug-in, 432, 479
- Photoshop, 6–7, 407, 408–423
 - droplet creation, 436–439
 - editing images in, 408–423
 - extended editing in, 420–423
 - Lightroom integration with, 7, 161, 408–423, 642
 - setting preferences for, 408–409, 412
 - Smart Objects used in, 420–423
 - steps for working with, 416–419
- Photoshop Elements, 332
- picks and rejects
 - deleting rejected photos, 149
 - filtering photos flagged as, 130, 614
 - Flag icons indicating, 101
 - flagging photos as, 130–131
 - keyboard shortcuts for, 41, 130
- Picture Package layout, 464–467, 471
- Pictures folder, 13, 14
- pin markers
 - Adjustment Brush, 300
 - Graduated Filter tool, 314
 - Radial Filter tool, 319
- pixel limit, 46
- Playback panel (Slideshow module), 514, 530–531
- Plug-in Manager, 444
- plug-ins
 - export, 444
 - import, 58
 - slideshow, 537
- PNG files, 5, 112, 641–644, 676
- Point Curve editing mode, 226–227
- Point Curve menu, 225
- portrait sharpening, 376
- Post-Crop vignette controls, 266–269
- Post-Processing export options, 435
- preferences, 14–19, 663, 664–679
 - accessing, 14, 34
 - External Editing, 16, 408–409
 - file for storing, 697
 - File Handling, 16, 668–675
 - General, 14, 664–666
 - Interface, 17, 675–679
 - mobile, 20–21, 681
 - Performance, 18–19
 - Presets, 15, 347, 666–668
 - resetting, 13, 664
- presentations, 495–561
 - book, 496–513
 - slideshow, 514–537
 - web gallery, 538–561
- presets
 - book, 500–501
 - camera-specific, 346–347
 - Develop module, 338–347
 - export, 424
 - external editor, 411
 - how they work, 341
 - HSL desaturate, 366
 - import, 36, 52
 - metadata, 49, 576–580
 - names for, 342
 - preferences for, 15, 666–668
 - resetting, 345
 - sharpening, 375–377
 - steps for using, 342–345
 - tone curve, 226
 - video clip, 223
 - watermark, 434
- Presets panel (Develop module), 338, 375
- presharpening images, 371
- Preview panel (Book module), 499–500
- Preview Target tool, 379
- previews, 114–117
 - Before/After, 278–283
 - Book module, 499–500
 - brush stroke area, 304
 - camera vs. Lightroom, 116
 - data file for, 82, 701
 - exporting catalogs with, 76–77
 - generation of, 115–116
 - grayscale, 380, 387
 - imported photo, 44, 114–115
 - Library module, 114–117
 - Masking slider, 388–389
 - missing, 117
 - Photoshop-edited image, 419
 - quality settings, 117
 - secondary display, 128
 - size settings, 117
 - slideshow, 531
 - soft proof, 485–492
 - web gallery, 554–555
 - See also* Smart Previews
- Print Adjustment controls, 477
- Print button, 450, 478
- print collections, 448, 470
- Print dialog, 475, 478, 482
- print drivers, 475
- Print Job panel (Print module), 448, 474–484
 - Color Management settings, 474
 - Draft Mode Printing option, 479
- Lightroom printing procedure, 474–478
- Print Adjustment controls, 477
- Print Sharpening option, 479
- Print to JPEG File option, 480
- Profile menu, 481
- rendering intent options, 484

- Print module, 448–484
 - Cells panel, 464–467, 468–469
 - Custom Package layout, 468–470
 - Guides panel, 455
 - Image Settings panel, 450–452, 464
 - interface overview, 448–450
 - Layout panel, 453–455
 - Layout Style panel, 450
 - Page panel, 458–463
 - Page Setup dialog, 472
 - Picture Package layout, 464–467
 - Print Job panel, 474–484
 - Print Setup dialog, 472, 473
 - Rulers, Grid & Guides panel, 464
 - Single Image/Contact Sheet layout, 450–463
 - Template Browser panel, 493
- Print Resolution option, 479
- Print Setup dialog, 472, 473, 476
- Print Sharpening options, 375, 479
- Print to JPEG File option, 468, 480
- printer profiles, 475, 481–484
- Printer Properties dialog, 476, 483
- printing, 447–493
 - 16-bit, 480
 - contact sheets, 456–457
 - custom profiles for, 481–484
 - Draft Mode for, 456, 479
 - to JPEG files, 478, 480
 - Lightroom procedure for, 474–478
 - margin adjustments for, 453, 454–455
 - mode settings for, 479
 - multiple cell, 456–457
 - to PDF files, 456, 478
 - rendering intent for, 484
 - resolution for, 432, 455, 473, 479
 - sharpening images for, 375, 432
 - soft proofing images for, 485–492
 - templates for, 470, 476, 493
- private metadata, 588
- process versions, 158–160, 215, 330, 336, 339, 413

- profiles
 - camera, 272–273
 - color, 153
 - lens, 244–247
 - printer, 475, 481–484
- Projection options, 201
- Promote subfolders dialog, 88
- proofing feature. *See* soft proofing
- ProPhoto RGB color space, 152, 189, 412, 428–429, 438
- PSD files
 - ensuring recognition of, 44
 - external editing options, 411, 412
 - XMP metadata options, 641–644
- Publish Services panel, 633–636
- publishing
 - books, 513
 - photos, 633–636
 - video clips, 634
- Purchase Book dialog, 513

Q

- Quality slider, 535, 554
- Quick Collections, 139–140, 145
- Quick Develop panel (Library module), 214–223
 - cropping options, 173
 - synchronizing settings, 218–219
 - tone adjustments, 214–216
 - typical workflow, 216–219
 - video file editing, 219–223

R

- Radial Filter tool, 319–322
 - correcting edge sharpness with, 321–322
 - example of working with, 320
- Radius slider, 382–383, 387
- RAID systems, 71, 704–705
- RAM requirements, 703
- rating photos, 130–135
 - color label use and, 134–135
 - flagging picks/rejects, 130–131
 - star ratings for, 132–133

- raw files
 - converting to DNG, 32–33, 277, 671
 - Detail panel adjustments, 375
 - editing in Photoshop, 409, 413
 - external editor options, 410–411
 - processing of, 373–375
 - See also* Camera Raw
- raw+JPEG files, 46
- Real World Image Sharpening with Adobe Photoshop, Camera Raw, and Lightroom* (Fraser and Schewe), 387
- Recovery slider, 181
- Red Eye Correction tool, 295–297
 - cursor size adjustments, 295
 - Pet Eye mode, 297
- Redo command, 324
- Refine Photos dialog, 131
- reflective highlights, 206
- rejects and picks. *See* picks and rejects
- Relative rendering intent, 484
- Reload command, 550
- removing
 - keywords from the Keyword List, 592
 - photos from collections, 149, 695–696
 - photos from the catalog, 149
 - red eye from images, 295–297
 - spots on photos, 284–294
 - See also* deleting
- Rename Photos dialog, 48
- renaming. *See* naming/renaming
- Render Preview options, 44
- rendering intent options, 44, 484, 488
- Repeat One Photo per Page option, 450, 452
- Resize to Fit options, 429, 430
- resizing. *See* sizing/resizing
- Resnick, Seth, 586, 593
- resolution
 - image size and, 430, 479
 - print reproduction and, 432, 455, 473, 479
- resource info for book, v

- Retina displays, 4, 154
- retouching photos, 284–322
 - Adjustment brush for, 298–313
 - Graduated Filter tool for, 314–318
 - localized adjustments, 298–322
 - Radial Filter tool for, 319–322
 - Red Eye Correction tool for, 295–297
 - Spot Removal tool for, 284–294
- reverse geocoding, 13, 642, 652, 660
- RGB channels, 228, 352
- RGB curve editing mode, 228–229
- RGB workspace, 152
- Richmond, Eric, vi, 519
- Riecks, David, 594
- Rotate to Fit option, 450, 452, 464
- rotating photos
 - cropping and, 164, 263
 - printing and, 450, 452
- Roundness slider, 266
- rulers and guides, 455
- Rulers, Grid & Guides panel (Print module), 464

S

- Saturation adjustments
 - Basic panel, 212–213, 367
 - HSL panel, 238, 240, 366
 - Quick Develop panel, 216
 - Split Toning panel, 362
- Saved Locations panel, 661
- saving
 - Develop presets, 338–340
 - effect settings, 300
 - metadata to files, 637–639
 - print templates, 493
 - Quick Collections, 139
 - slideshow templates, 533
 - snapshot variations, 324, 325
 - web gallery templates, 561
- scenic sharpening, 377
- Schewe, Jeff, iv, vi, 387, 396, 432
- screen display. *See* display screen
- Screen output option, 432

- searching
 - advanced or complex, 631–632
 - attribute filter for, 624
 - metadata used for, 566–567, 624–627
 - rules defined for, 622–623, 628–630
 - text filter for, 621–623
- second copy backups, 45
- Secondary Display submenu, 126
- secure file transfer protocol (SFTP), 558
- Select Catalog dialog, 14
- selections
 - filtering photos using, 614, 619
 - instructions on making, 138
 - saving as collections, 140–141
 - Slideshow module, 532
- sequence numbers, 48
- sets
 - collection, 146
 - keyword, 596–597
- shadows
 - clipping, 189, 206–207
 - darkening, 207, 232
 - lightening, 187, 195
 - localized adjustments, 310–311
 - noise problems, 378
- Shadows adjustment
 - Adjustments panel, 310–311
 - Basic panel, 181–182, 187, 194, 195, 234
 - Tone Curve panel, 232
- sharing
 - catalogs, 81–83
 - collections, 690
- sharpening, 371–395
 - capture, 372–373, 431
 - edges of photos, 321–322
 - effect sliders, 379–383
 - evaluating at 1:1 view, 379
 - examples of applying, 390–391
 - grayscale previews of, 380, 387
 - improved features for, 373–375
 - interpolation and, 431
 - localized, 312–313, 392–393

- sharpening (*continued*)
 - luminance targeted, 379
 - modifying controls, 384–389
 - negative, 394–395
 - output, 375, 432
 - portrait, 376
 - presets for, 375–377
 - print, 375, 432, 479
 - sample image for, 378
 - scenic, 377
 - web gallery images, 554
- Sharpening controls
 - Adjustment brush, 312–313
 - Amount slider, 380–381
 - Clarity slider, 304, 312–313
 - Detail panel, 372, 373, 379–389
 - Detail slider, 384–386
 - Masking slider, 387–389
 - Quick Develop panel, 216
 - Radius slider, 382–383
 - Sharpness slider, 312–313, 392–393
- shortcuts, keyboard, 3, 27, 162
- shutter speed information, 626
- sidecar files, 570
- Simulate Paper & Ink option, 487
- Single Image/Contact Sheet layout, 450–463
- Single Person view mode, 606, 607
- Site Info panel (Web module), 538, 544
- Size slider
 - Adjustment brush, 298
 - Spot Removal tool, 284, 291
- sizing/resizing
 - images for exporting, 429–431
 - interpolation and, 431
 - thumbnails, 102
- skin tone corrections, 239
- Skurski, Mike, 432
- sleep protection, 10
- Slide Editor view, 516, 522, 525
- Slideshow module, 514–537
 - Backdrop panel, 526–527
 - interface overview, 514–515
 - Layout panel, 517

- Slideshow module (*continued*)
 - Music panel, 529
 - Options panel, 518–519
 - Overlays panel, 520–525
 - Playback panel, 530–531
 - Preview mode, 531
 - Slide Editor view, 516, 522, 525
 - Template Browser panel, 533
 - Titles panel, 528
 - Toolbar, 514, 532
 - slideshows, 514–537
 - backdrops for, 526–527
 - collection creation, 533–534
 - color processing for, 555
 - exporting, 534–537
 - identity plates, 520, 521
 - impromptu, 532
 - music sound tracks for, 529, 530, 537
 - navigating, 532
 - PDF or JPEG, 534, 535–536
 - playback options, 530–531
 - plug-ins for, 537
 - previewing, 531
 - selections for, 532
 - templates for, 533
 - text overlays, 522–525
 - titles for, 528
 - video, 536–537
 - Smart Collections, 11, 81, 146–148
 - Smart Objects, 420–423
 - Smart Previews, 4, 44, 80–83
 - creating, 80–81
 - exporting catalogs with, 76, 77
 - face-recognition technology and, 601
 - Lightroom mobile and, 683
 - sharing catalogs using, 81–83
 - size of data file for, 82
 - Snapshots panel (Develop module), 324–327
 - saving variations using, 324, 325
 - Sync Snapshots command, 324, 326–327
 - soft proofing, 485–492
 - Before and After views, 488–491
 - Before State options, 492
 - books before printing, 513
 - display screen considerations, 485–487
 - practice guidelines, 487–488
 - Soft Proofing panel, 487, 488
 - Soften Skin effect, 304–305
 - solo mode for panels, 162
 - Soni, Neil, vi
 - sorting photos, 646–649
 - color labels and, 647–649
 - tethered shooting and, 65
 - sound tracks, 529, 530, 537
 - sounds, completion/alert, 666
 - Source panel (Import dialog), 40
 - Special Characters panel, 511
 - splash screen options, 664, 676, 677
 - Split Toning panel (Develop module)
 - black-and-white conversions, 350, 361, 362–365
 - color image adjustments, 364–365
 - Spot Removal tool, 284–294
 - auto-find behavior, 292
 - brush spot adjustments, 287–290
 - Clone and Heal modes, 284, 291
 - editing circle/brush spots, 291
 - Feather slider, 292
 - instructions for using, 284–285
 - keyboard shortcuts, 284, 285, 291
 - synchronized spotting, 293–294
 - Tool Overlay options, 291
 - undoing/deleting spots, 291
 - Visualize Spots feature, 286–287
 - SQLite3 database format, 68
 - sRGB color space, 189, 412, 429, 438, 555
 - SSDs (solid-state drives), 81, 701
 - stacking photos, 136–137
 - star ratings, 132–133
 - Stern, Zalman, 4
 - Straighten tool, 167
 - straightening photos, 167, 168–169
 - striped RAID system, 704, 705
 - Stroke Border option, 518, 519
 - subfolders
 - creating, 94
 - filtering, 618
 - importing, 41, 54
 - organizing photos into, 50
 - showing photos in, 88
 - Survey view, 118–119, 128, 129
 - Sync Snapshots command, 324, 326–327
 - Synchronize Folder dialog, 92–93, 333
 - Synchronize Metadata dialog, 645
 - Synchronize Settings dialog, 219, 293, 327, 330, 331
 - synchronizing
 - Auto Sync mode for, 294, 330
 - with Camera Raw, 333–335
 - collections, 21, 686–687
 - Develop settings, 219, 330–331
 - folders, 92–93, 333
 - with Lightroom mobile, 21, 38, 686–687
 - metadata settings, 645
 - snapshots, 324, 326–327
 - spot removal settings, 293–294
 - Upright settings, 259–262
 - system folders, 88–90
 - System Info dialog, 702
 - system recommendations, 8, 702–706
- ## T
- Target Adjustment tool, 224, 230, 238, 356, 367, 512
 - target collections, 145, 600
 - Temp slider
 - B&W conversions, 354–355
 - independent adjustments, 179
 - localized adjustments, 178, 308–309
 - Template Browser panel
 - Print module, 448, 493
 - Slideshow module, 533
 - Web module, 538, 552, 561

- templates
 - Photo Info, 463
 - print, 470, 476, 493
 - settings folder for, 698–699
 - slideshow, 533
 - text, 552–553
 - web gallery, 561
 - tether toolbar, 64
 - Tethered Capture Settings dialog, 63
 - Tethered Shoot control panel, 64
 - tethered shooting, 61–65
 - cable connection for, 61
 - connecting cameras for, 61–62
 - Lightroom feature for, 62–65
 - Sort option for, 65
 - speed considerations for, 63
 - steps in process of, 63–65
 - wireless, 61–62
 - text
 - book, 508–512
 - photo info, 463
 - searching, 621–623
 - slideshow, 520, 522–525
 - Sort by Label option, 649
 - web gallery, 549–553
 - text box layouts, 508
 - Text panel (Book module), 496, 508–509
 - Text Template Editor, 668
 - Print module, 463
 - Slideshow module, 522, 523
 - Web module, 550, 552
 - thelightroombook.com website, v
 - theturninggate.net website, 543
 - third-party gallery styles, 543–544
 - thumbnails
 - badges displayed with, 101, 143
 - Library Grid view, 102
 - Thumbnails slider, 41, 102, 500
 - TIFF files
 - exporting photos as, 428
 - external editing options, 411, 412
 - XMP metadata options, 641–644
 - Time Machine backups, 71
 - time/date information, 573–574, 626
 - time-lapse videos, 537
 - Tint slider
 - B&W conversions, 354, 359
 - independent adjustments, 179
 - localized adjustments, 178, 308–309
 - titles
 - slideshow, 528
 - web gallery, 549–553
 - Titles panel (Slideshow module), 514, 528
 - tone controls
 - Basic panel, 180–188
 - Quick Develop panel, 214–216
 - Tone Curve panel, 224–237
 - Tone Curve panel (Develop module), 224–237
 - Basic panel adjustments and, 181, 232–235
 - overview of controls in, 224–225
 - Point Curve editing mode, 226–227
 - RGB curve editing mode, 228–229
 - Tone Curve regions, 230–232
 - tone range split points, 225, 236–237
 - Tool Overlay options, 172, 291
 - Toolbar, 26
 - Book module, 500
 - Develop module, 291
 - Import dialog, 41
 - Library module, 86
 - People view mode, 607
 - Slideshow module, 514, 532
 - tracklogs, 654–657
 - Transform perspective controls, 263
 - transparency preservation, 258
 - Type panel (Book module), 510–512
 - typographic fractions, 679
- U**
- Uncheck All button, 41
 - underexposed image correction, 194–195
 - Undo command, 291, 300, 324, 526
 - Unsharp Mask filter, 372
 - updates
 - automatically checking for, 664
 - provided by book's author, v
 - upgrading Lightroom, 11–13
 - Upload Settings panel (Web module), 557, 559
 - uploading
 - files via Lightroom Web, 693–694
 - web galleries, 557–561
 - Upright adjustments, 257–262
 - how they work, 257–258
 - suggested order for, 258
 - synchronizing, 259–262
 - UPS units, 72
 - USB connections, 61
 - user Lightroom folder, 69
- V**
- Validate DNG Files feature, 673
 - Vibrance adjustments
 - Basic panel, 212–213, 367
 - Quick Develop panel, 216
 - video cache settings, 675
 - video drivers, 19
 - video files/clips
 - adding to slideshows, 530
 - editing, 219–223
 - exporting, 445, 536–537
 - importing, 46, 53
 - presets for, 223
 - publishing, 634
 - slideshows as, 536–537
 - time-lapse, 537
 - view modes
 - Develop module, 164, 278–283
 - Metadata panel, 568–569, 571
 - View options (Library module)
 - Compare view, 120–123
 - Grid view, 41, 100–103, 106, 107
 - Loupe Overlay view, 110–113
 - Loupe view, 41, 104–109
 - Survey view, 118–119
 - vignetting
 - applying to photos, 266–269
 - correcting problems with, 263–265

- virtual copies
 - copy names for, 570, 572
 - creating for photos, 328–329
 - external editing with, 417–418
 - filtering for, 617
 - snapshots vs., 328
 - soft proofing and, 489, 492
- Visualize Spots feature, 286–287

W

- warped images, 168
- watermarks, 433–435, 458, 520
- web browsers, 555, 558
- web galleries, 538–561
 - captions for, 549–553
 - collection creation, 561
 - color processing for, 555
 - color themes for, 545–546
 - exporting, 556
 - HTML-style, 540, 541, 547
 - HTML5-style, 540, 542, 548
 - identity plate options, 544
 - layout appearance, 547–548
 - metadata information, 552, 554
 - previewing, 554–555
 - quality settings, 554
 - sharpening images in, 554
 - site info for, 544
 - styles for, 540–544
 - templates for, 561
 - third-party, 543–544
 - titles for, 549–553
 - uploading, 557–561

- Web module, 538–561
 - Appearance panel, 547–548
 - Color Palette panel, 545
 - Export and Upload buttons, 556
 - Image Info panel, 549–553
 - interface overview, 538–539
 - Layout Style panel, 540–544
 - Output Settings panel, 554
 - performance improvement, 538
 - Preview in Browser button, 555
 - Site Info panel, 544
 - Template Browser panel, 552, 561
 - Upload Settings panel, 557, 559
- Web view. *See* Lightroom Web view
- web-safe colors, 545
- website links
 - from email, 560
 - from metadata, 584
 - from web galleries, 544
- Wendt, Max, v, 4
- Weston, Stuart, vi
- white balance
 - Basic panel adjustments, 174–179, 185, 233
 - color checker chart, 176
 - creative adjustments, 177
 - display screen calibration, 154–155
 - independent adjustments, 179
 - localized adjustments, 178
 - Quick Develop panel adjustments, 215
- White Balance tool, 174–179, 185, 233
- white point, 154, 485

- Whites adjustment
 - auto calculation, 183–184
 - Basic panel, 182–184, 188, 235
- Windows computers
 - gamma setting on, 154
 - Lightroom preferences on, 14–19, 34, 697
 - printer settings on, 472, 473, 476–477, 478, 483
 - system requirements for, 8
- wireless shooting, 61–62
- Witte, Valerie, v
- workflow in Lightroom, 5–6
- WS_FTP Pro software, 557

X

- XMP space, 637
 - read/write options, 641–644
 - saving metadata to, 639

Z

- Zoom to Fill Frame option (Slideshow module), 518, 519
- Zoom to Fill option (Print module), 450, 451, 464
- zooming
 - clicked point to center, 108, 679
 - magnification options for, 108–109