

Red Hat Fedora 4 Unleashed

Copyright © 2005 by Sams Publishing

International Standard Book Number: 0672327929

Warning and Disclaimer

Every effort has been made to make this book as complete and as accurate as possible, but no warranty or fitness is implied. The information provided is on an "as is" basis. The author and the publisher shall have neither liability nor responsibility to any person or entity with respect to any loss or damages arising from the information contained in this book or from the use of the CD or programs accompanying it.

When reviewing corrections, always check the print number of your book. Corrections are made to printed books with each subsequent printing. To determine the print number of your book, view the copyright page. The print number is the right-most number on the line below the "First Printing" line. For example, the following indicates that this is the 2nd printing and it was printed in 2004.

First Printing: May 2003

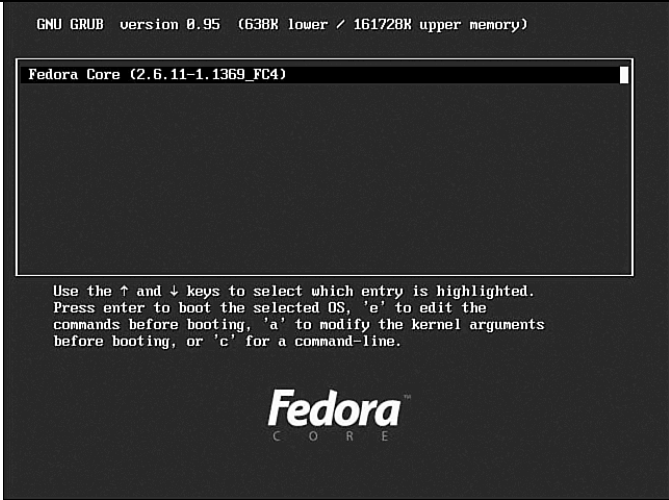
07 06 05 04 4 3 2


First and Second Printing Corrections

Pg	Error	Correction
1	Global for whole book: References to CD-ROM should be a DVD.	
1	Global: Fedora Core and Fedora Core Linux should be Fedora .	
2	It can be found at http://en.wikipedia.org/wiki/Linux_Torvalds .	It can be found at http://en.wikipedia.org/wiki/Linus_Torvalds .
4	Some of these include the Artistic License, the BSD License, the Mozilla Public License, and the Q Public License .	Some of these include the Artistic License, the BSD License, and the Mozilla Public License.
7	A two-CD set of the Fedora Core CD-ROMs is included, as is a DVD , so you will have everything you need to get started.	A DVD containing Fedora is included, so you will have everything you need to get started.
14	The list of Linux projects, efforts, and partnerships reads like a Who's Who of the software industry: Amazon, Ameritrade, Borland, Computer Associates, Dell, Hewlett-Packard/Compaq , IBM, Oracle, and SAP are just some of the enterprise-level players using Linux.	The list of Linux projects, efforts, and partnerships reads like a Who's Who of the software industry: Amazon, Ameritrade, Borland, Computer Associates, Dell, Hewlett-Packard , IBM, Oracle, and SAP are just some of the enterprise-level players using Linux.
15	Linux is also a key ingredient and shares an ever-increasing portion of server hardware sales from all large vendors, such as IBM, Hewlett-Packard/Compaq , and Dell.	Linux is also a key ingredient and shares an ever-increasing portion of server hardware sales from all large vendors, such as IBM, Hewlett-Packard , and Dell.

15	Fedora includes the Bluecurve desktop theme and has an improved consistency in the two major graphical desktops available for use: the GNU Network Object Model Environment (GNOME) and the K Desktop Environment (KDE).	Fedora includes the Clearlooks desktop theme and has an improved consistency in the two major graphical desktops available for use: the GNU Network Object Model Environment (GNOME) and the K Desktop Environment (KDE).
33	One caveat is that if you prepare a hard drive with Linux in a PC with one CPU, such as a Pentium , and then install the drive in a PC with a 486 CPU, you should either make sure that a 486-based Linux kernel is installed, or perform a post-install of an appropriate kernel after moving the hard drive.	One caveat is that if you prepare a hard drive with Linux in a PC with one CPU, such as a Pentium 4 , and then install the drive in a PC with a 486 CPU, you should either make sure that a 486-based Linux kernel is installed, or perform a post-install of an appropriate kernel after moving the hard drive.
35	Red Hat, Inc. offers a hardware compatibility database at http://hardware.redhat.com/hcl/ .	Red Hat offers a hardware compatibility database at http://hardware.redhat.com/hcl/ .
38	Common modern (1996-onward) PC motherboard form factors are designed according to industry-assigned specifications (usually from Intel), and are ATX (12-9.6 inches); MicroATX (9.6-9.6 inches); and FlexATX (9-7.5 inches).	Common modern (1996-onward) PC motherboard form factors are designed according to industry-assigned specifications (usually from Intel), and are ATX (12x9.6 inches); MicroATX (9.6x9.6 inches); and FlexATX (9x7.5 inches).

63	Figure 3.3 replaced	
75	<p>If you are installing over a network, go take a break because the install will proceed unattended through the software installation. If you are using this book's CD-ROMs, you might be prompted to remove the first CD-ROM and insert another. You might also be asked to repeat this operation using the third CD-ROM at some point.</p>	<p>If you are installing over a network, go take a break because the install will proceed unattended through the software installation.</p>

77	Figure 3.19 replaced.	
101	Most often used by Linux mobile users, APM can help extend battery sessions through the use of intelligent storage-cell circuitry, CPU "throttling" (similar to, but not the same as safety thermal throttling incorporated by Intel in Pentium III and IV CPUs), and control of displays and hard drives.	Most often used by Linux mobile users, APM can help extend battery sessions through the use of intelligent storage-cell circuitry, CPU "throttling" (similar to, but not the same as safety thermal throttling incorporated by Intel in Pentium III and 4 CPUs), and control of displays and hard drives.
127	Note that <u>devfs</u> might be supported, but will generally be superseded in the upcoming 2.6 kernel by <u>/proc/udev</u> , as a way of managing hot-plug devices on your system.	Note that <u>devfs</u> might be supported, but will generally be superseded in the 2.6 kernel by <u>/proc/udev</u> , as a way of managing hot-plug devices on your system.
132	<u>/usr/X11R6/bin/xauth</u> : creating new authority file <u>/home/winky/.Xauthority</u>	<u>/usr/X11R6/bin/xauth</u> : creating new authority file <u>/home/andrew/.Xauthority</u>
139	<u>/usr/X11R6/bin:/home/bball/bin</u>	<u>/usr/X11R6/bin:/home/andrew/bin</u>

146	Richard M. Stallman's GNU <u>emacs</u> editor, like <u>vi</u> , is included with Linux and nearly every other Linux distribution.	Richard M. Stallman's GNU <u>emacs</u> editor, like <u>vi</u> , is included with Fedora and nearly every other Linux distribution.
162	Remove the second paragraph in the The Red Hat and Fedora Desktop sidebar on page 162.	
163	Remove the last sentence in the fourth paragraph on page 163.	
184	Figure 6.12 replaced.	
196	The graphical software management client has been improved by Fedora Core to enable the use of local and remote Yum (that stands for YellowDog Updater modified , first used in the YellowDog [PPC] Linux distribution) repositories.	The graphical software management client has been improved by Fedora to enable the use of local and remote Yum (that stands for YellowDog Updater Modified , first used in the YellowDog [PPC] Linux distribution) repositories.

200	It works much the same as <u>apt</u> , but lacked a GUI tool.	It works much the same as <u>apt</u> , but lacks a GUI tool.
200	You can obtain Yum from the Fedora site as well as from FreshRPMs.net ; the home page of Yum is at http://linux.duke.edu/projects/yum/ .	Yum is installed as part of Fedora's standard packages ; the home page of Yum is at http://linux.duke.edu/projects/yum/ .
200	Remove Here's how you install and configure Yum: and the following bulleted list on page 200.	
200	Once Yum is installed; the following commands are useful (remember that the Fedora graphical client is available if you configure it to use Yum repositories):	The following commands are useful (remember that the Fedora graphical client is available if you configure it to use Yum repositories):
200	You'll find either apt and Yum to be useful additions to Fedora Core. We suggest that you use the one from FreshRPMs.net if you want to install some of the multimedia applications described in Chapter 10, "Multimedia Applications." To learn more about yum, check out Chapter 36, "Advanced Yum."	You'll find either apt and Yum to be useful additions to Fedora Core. To learn more about Yum, check out Chapter 36, "Advanced Yum."
202	<code>\$ echo "-o3 -march=athlon" >> \$HOME/.rpmmacros</code>	<code>\$ echo "-O3 -march=athlon" >> \$HOME/.rpmmacros</code>

214 Figures 8.6 and 8.7 replaced.

The screenshot shows a window titled "Evolution Setup Assistant" with a sub-header "Identity". The window contains the following text and fields:

Please enter your name and email address below. The "optional" fields below do not need to be filled in, unless you wish to include this information in email you send.

Required Information

Eull Name:

Email Address:

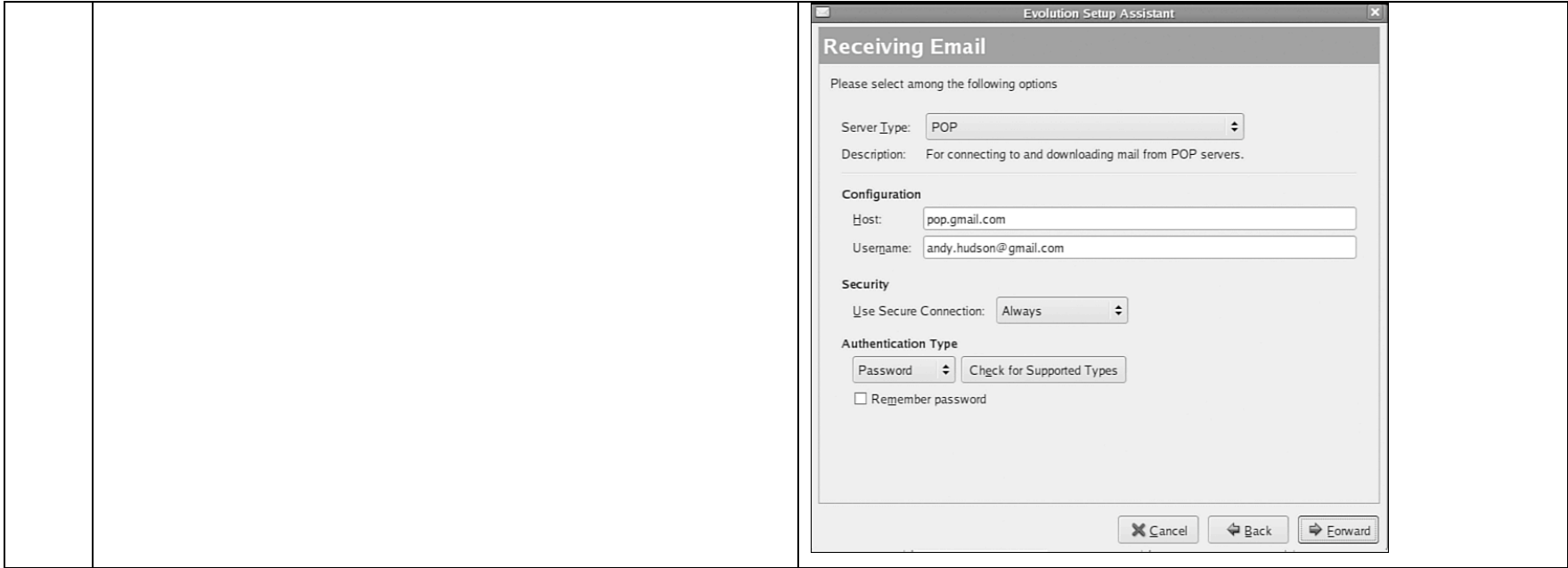
Optional Information

Make this my default account

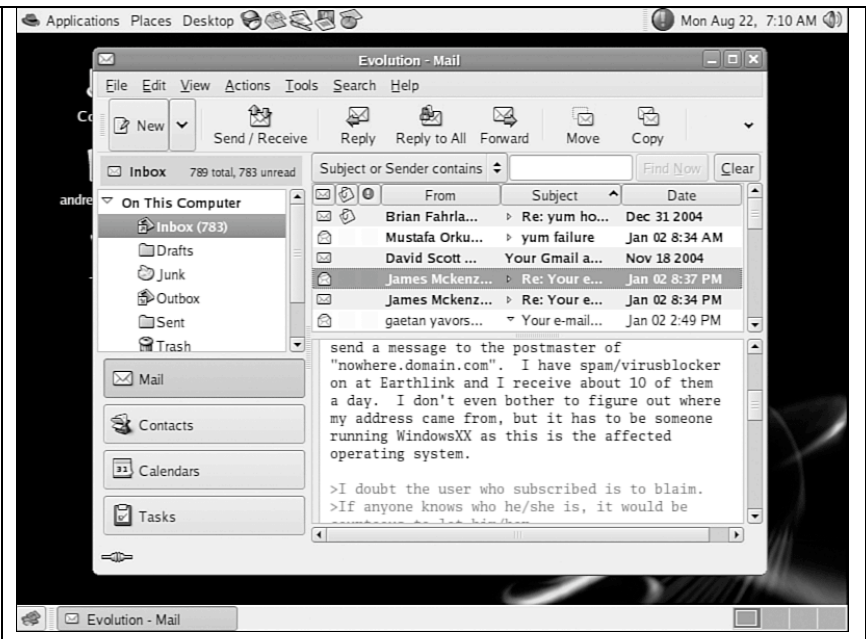
Reply-To:

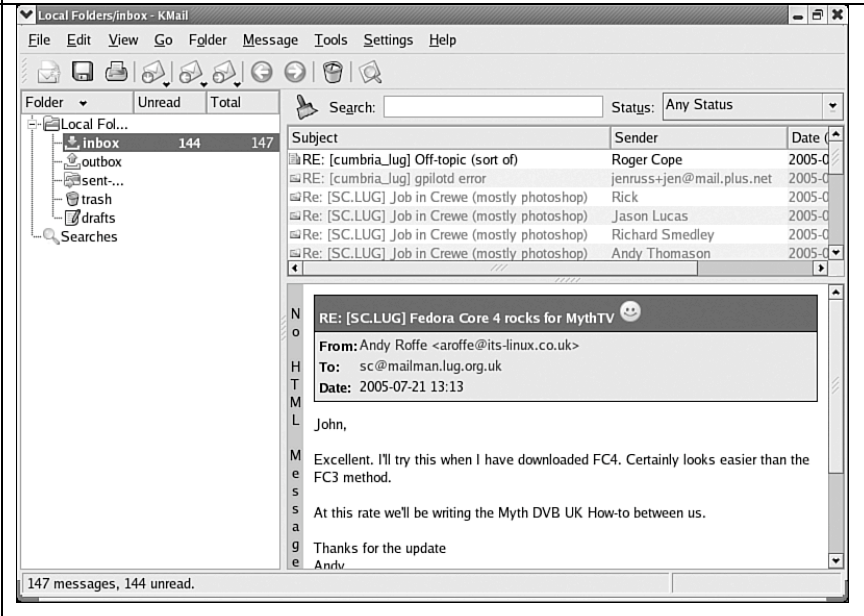
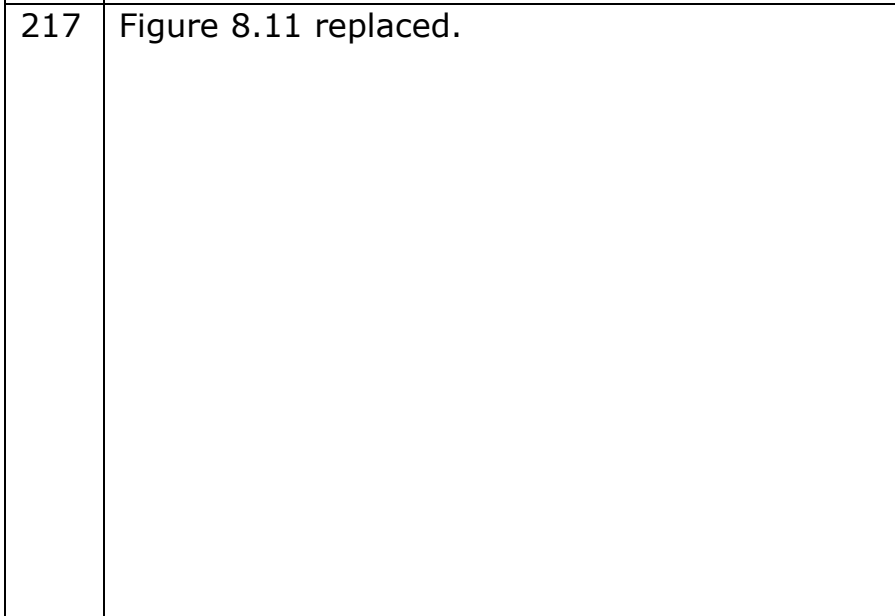
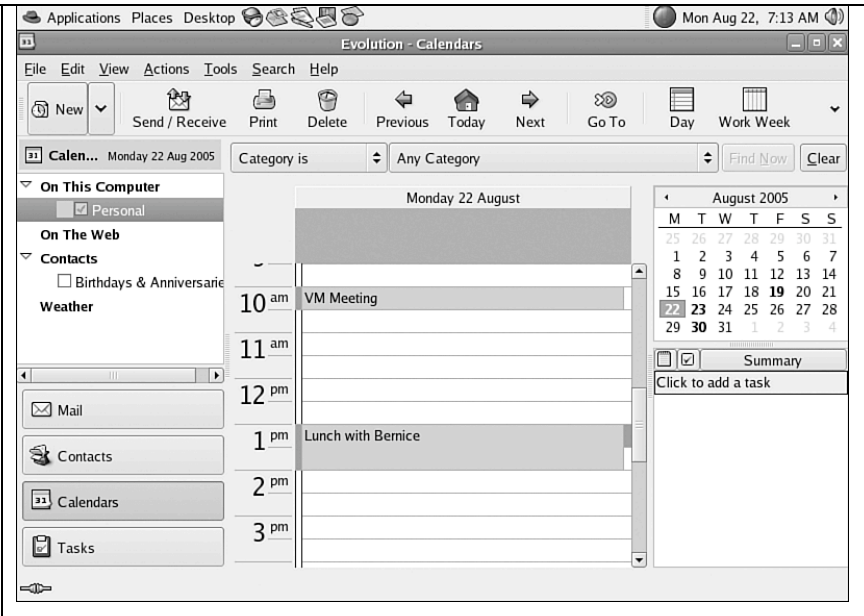
Organization:

At the bottom of the window are three buttons: "Cancel", "Back", and "Forward".



215 Figures 8.8 and 8.9 replaced.

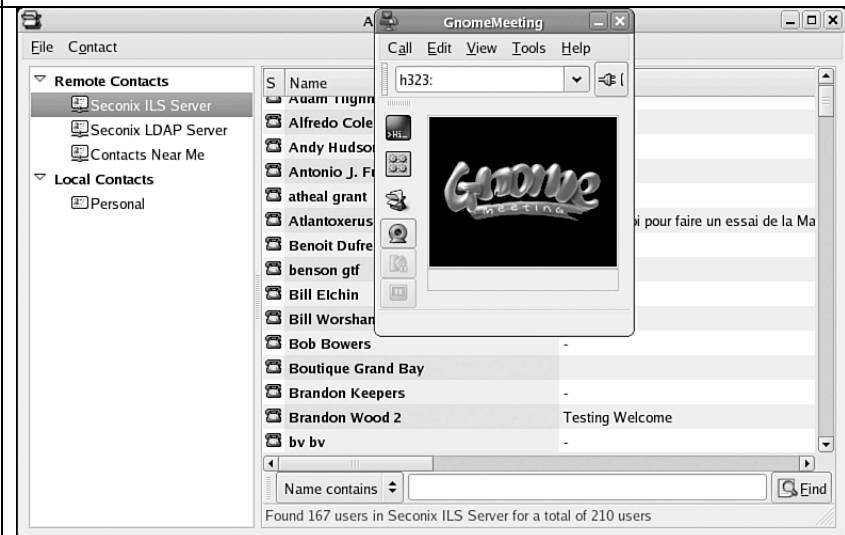




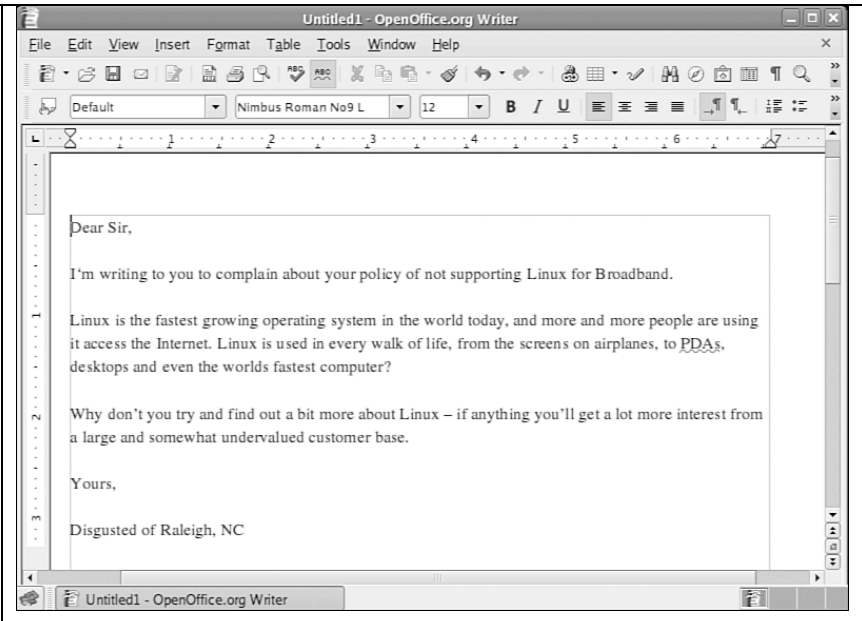
226 Figure 8.17 replaced.



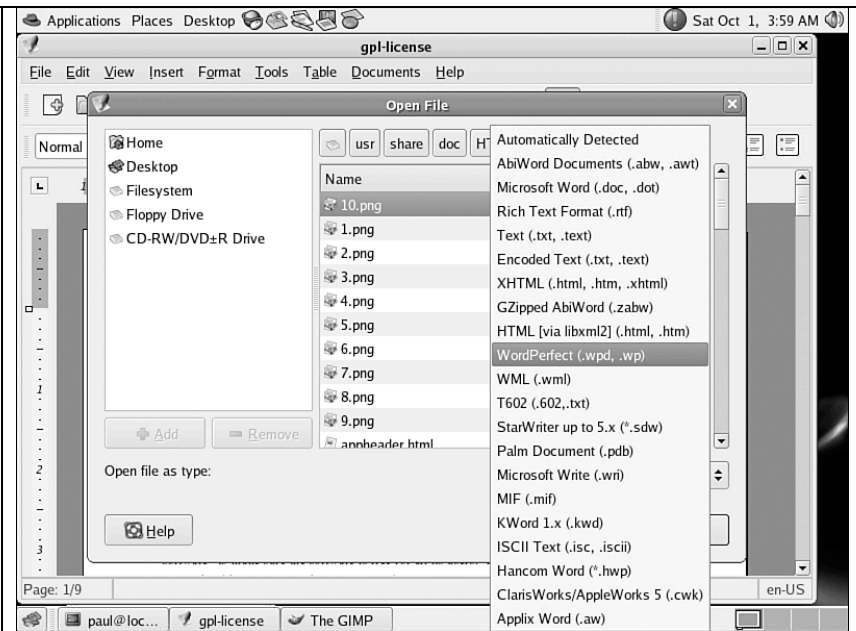
233 Figure 8.22 replaced.



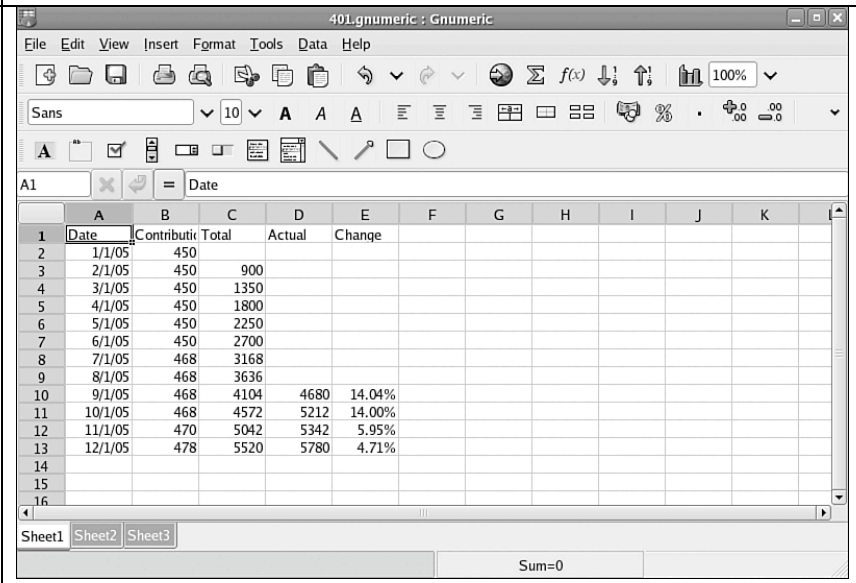
239 Figure 9.1 replaced.



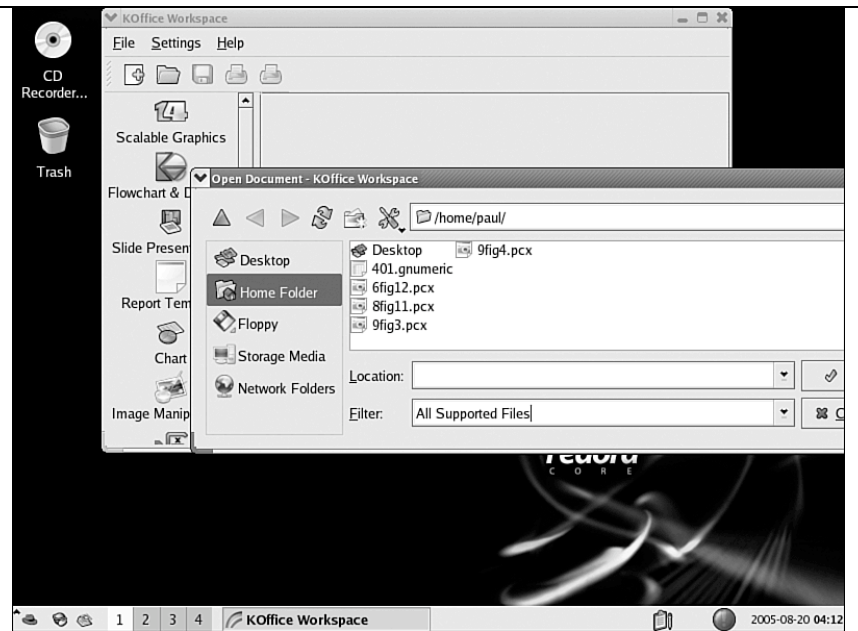
242 Figure 9.3 replaced.



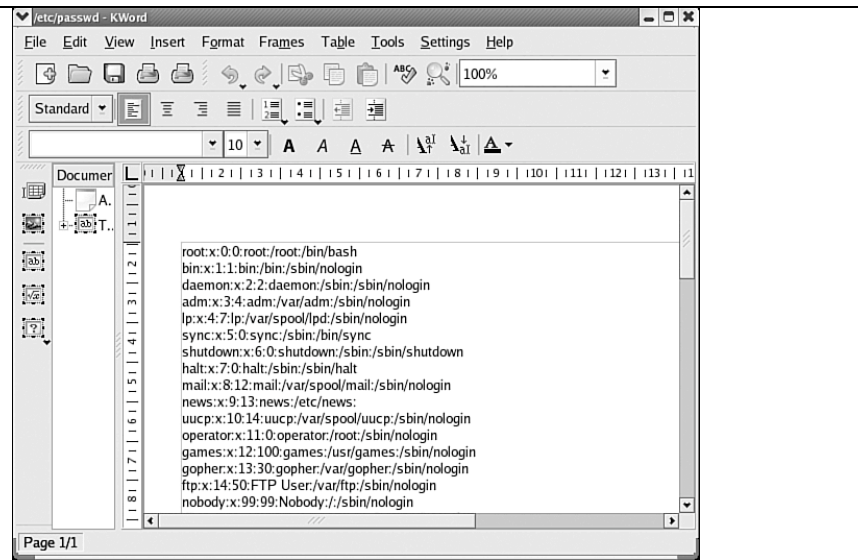
243 Figure 9.4 replaced.

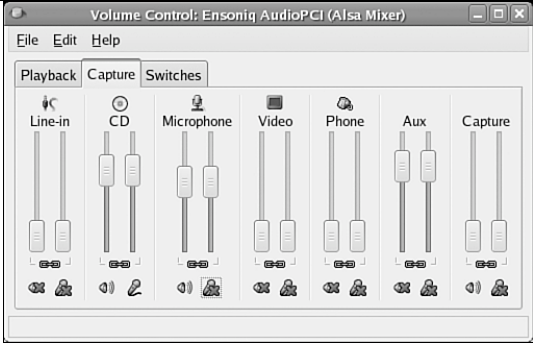


245 Figure 9.5 replaced.



246 Figure 9.6 replaced.



269	Figure 10.4 Simplicity in design and layout make the Sound Recorder and Volume Control applications easy to use.	Figure 10.4 Simplicity in design and layout make the Volume Control application easy to use.
269	Figure 10.4 replaced.	
287	First, we ran <code>\$ xhost +</code> on the remote compute to allow another computer access to the X server on the remote machine; the command to take the screenshot is run on our local machine like this:	First, we ran <code>xhost +</code> on the remote computer to allow another computer access to the X server on the remote machine; the command to take the screenshot is run on our local machine like this:
358	...nightly update of the YUM RPM package database,nightly update of the Yum RPM package database, ...
395	...information inside an <code>/xterm</code> X11 terminal window,...	...information inside an <code>xterm</code> X11 terminal window,...
408	Two legacy applications included with Red Linux include the nice and <code>re-nice</code> commands. (nice is part of the GNU sh-utils package, whereas <code>re-nice</code> is inherited from BSD Unix.)	Two legacy applications included with Red Hat Linux include the nice and <code>renice</code> commands. (nice is part of the GNU sh-utils package, whereas <code>renice</code> is inherited from BSD Unix.)

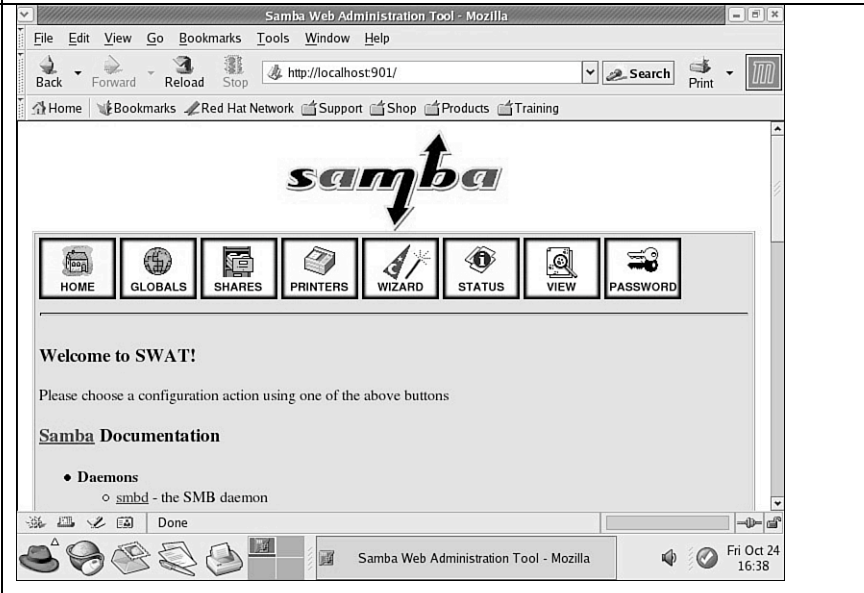
409 Figure 15.1 replaced.


```
paul@localhost:~
File Edit View Terminal Tabs Help
top - 04:37:08 up 1:17, 2 users, load average: 0.36, 0.48, 0.76
Tasks: 87 total, 1 running, 86 sleeping, 0 stopped, 0 zombie
Cpu(s): 2.3% us, 2.3% sy, 0.0% ni, 95.3% id, 0.0% wa, 0.0% hi, 0.0% si
Mem: 158292k total, 145940k used, 12352k free, 3880k buffers
Swap: 706852k total, 32348k used, 674504k free, 66788k cached
PID to renice:
PID USER PR NI VIRT RES SHR S %CPU %MEM TIME+ COMMAND
2341 root 15 0 37828 10m 4568 S 3.0 6.7 3:52.22 X
4218 paul 25 10 35452 12m 7256 S 0.7 8.0 0:09.01 rhn-applet-gui
4494 paul 16 0 2024 972 780 R 0.7 0.6 0:00.04 top
1888 root 16 0 2740 600 520 S 0.3 0.4 0:02.43 nifd
4473 paul 15 0 37556 12m 8312 S 0.3 7.8 0:00.66 gnome-terminal
1 root 16 0 1748 520 496 S 0.0 0.3 0:01.87 init
2 root 34 19 0 0 0 S 0.0 0.0 0:00.03 ksoftirqd/0
3 root RT 0 0 0 S 0.0 0.0 0:00.04 watchdog/0
4 root 10 -5 0 0 0 S 0.0 0.0 0:00.19 events/0
5 root 10 -5 0 0 0 S 0.0 0.0 0:00.03 khelper
6 root 10 -5 0 0 0 S 0.0 0.0 0:00.00 kthread
8 root 20 -5 0 0 0 S 0.0 0.0 0:00.00 kacpid
61 root 10 -5 0 0 0 S 0.0 0.0 0:00.18 kblockd/0
64 root 15 0 0 0 0 S 0.0 0.0 0:00.00 khubd
110 root 15 0 0 0 0 S 0.0 0.0 0:00.82 pdflush
111 root 15 0 0 0 0 S 0.0 0.0 0:00.91 pdflush
113 root 13 -5 0 0 0 S 0.0 0.0 0:00.00 aio/0
```

510 After a while, **Bob** Behlendorf and Cliff Skolnick set up...

After a while, **Brian** Behlendorf and Cliff Skolnick set up...

558 Figure 20.2 is the wrong figure.



561	Last line: INSERT INTO cd_collection VALUES(9, 'Nevermind', ' Nirvana , '1991', 'NULL');	INSERT INTO cd_collection VALUES(9, 'Nevermind', ' Nirvana , '1991', NULL);
583	So, whether you are sharing ogg files across...	So, whether you are sharing OGG files across...
585	If you prefer, you can use Red Hat's system-...	If you prefer, you can use Fedora's system-...
603	Tip: ...such as Trendaware's TEW-PS3, HP Compaq's parallel...	...such as Trendaware's TEW-PS3, HP's parallel...
607-610	Figure 21.12-21.16	New 21.12 and figures shift one out stopping with 21.16. Old Figure 21.16 is removed 
676	...written in PHP 4 language...	...written in PHP language...
676	You must configure your web server to work with PHP 4 .	You must configure your web server to work with PHP .
680	(used with MySql ,...)	(used with MySQL ,...)
951	(Both the heading and the In This Chapter section on this page) The Fedora Core Linux File System Basics	Fedora File System Basics
957	Red Hat had invested heavily...(and now Fedora Core) does not...such as SuSE and...	Red Hat invested heavily...(and now Fedora) does not...such as SUSE and...
1031	<i>Index entry</i> / (backslashes)	<i>Should be</i> \ (backslashes)

This errata sheet is intended to provide updated technical information. Spelling and grammar misprints are updated during the reprint process, but are not listed on this errata sheet.