

INDEX

A

AcceptChanges method

- DataSet update and, 204–205, 206, 207
- with ForeignKeyConstraint, 224

AcceptRejectRule, 224

Access/Jet engine, 27

Add method, 169–170, 203–204

Added enumeration, 205

AddNew method, 43

ADO 2.x

- ADO.NET versus, 157, 158
- concurrency conflicts in, 267

ADO.NET

- batch updates and, 43
- concurrency conflicts in, 266–270
- DataViews, 273–285
- JET and, 27
- objects of, 40
- strongly typed DataSets, 285–290
- tables and column mappings, 270–272
- XML, reading, 344–349

ADO.NET, Data Providers, 156–194

- Command object, 166–180
- Connection, Command design-time components, 184–186
- Connection object, 162–166
- DataReader object, 180–184
- objects of, 159–162
- overview, 156–159
- Transaction object, 186

ADO.NET, DataAdapter, 234–264

- methods, properties of, 234–235
- multiple related tables, combining, 258–264
- populating DataSet, 235–240
- update commands, setting, 242–257
- updating data source, 241–242

ADO.NET, DataSet, 196–231

- accessing data from DataTable, 209–214
- applications, components of, 196–198
- DataSet component usage, 224–230
- DataTable, adding data to, 202–204
- DataTable schemas, defining, 198–202
- table constraints, 220–224
- table relations, 214–219
- updating, 204–209

Aggregate functions. *see* Structured Query Language (SQL)

Aggregate queries. *see* Queries

Aliasing, 67

AllowDBNull property, 202, 212

ALTER clause, 81

AND operator, 56

Application interfaces, 159

Application logic, 412

Applications, DataSet, 196–198

Archiving data, 187–193

AS clause, 67, 68

ASP.NET

- database access through, 392–405
- database performance improvement, 405–408
- overview of, 390–392

ASPNET User, 393–399

Auto mode, 348

AutoIncrement property, 202

AutoNumber fields, 100

AVG function, 71

B

bcp (bulk copy program), 311

BeginEdit method, 207

BETWEEN operator, 57

Bigint data type, 9

Binary data type, 9

Binding. *see* Data binding

BindingContext object, 39–40, 43

Boolean data type, 9

Browser, data. *see* Data browser

Bulk copy program (bcp), 311

Business benefit, 429–430

Business case

- described, 3
- multiple related tables, combining, 258–264
- SQL Script, database creation with, 133–153
- tables/relationships, designing, 5–7
- trigger, creating, 120–123
- viewing data from different sources, 280–285
- writing archive routine, 187–193
- XML files, preparing for business partners, 364–380

Business logic, 252–253

C

Caching data, 196

Calculations, 65–66

Cascading updates/deletes, 30–31

CaseSensitive property, 201

Catalog command, 173, 174

Change Scripts. *see* Scripts

Char data type, 9

Child table

- combining multiple tables, 261
- constraints, 220
- relations of, 214–219

ChildRelations property, 217–218

Classic ADO. *See* ADO 2.x

Clear method, 41

ClearErrors method, 208

Client-server architecture, 84–85

CLR (Common Language Runtime), 158

Collation, default, 97

Column

- accessing data from, 209–211
- concurrency conflicts and, 268–269
- for DataTable object, 200–202
- defined, 2
- error of, 207–209
- ID, 119
- mappings, 270–272
- PrimaryKey property and, 212
- table constraints and, 220–224
- typed DataSet for, 286, 289

COM object, 412

ComboBoxes, 279, 280

Command design-time component, 184–186

Command files, 306–311

Command object

- DataAdapter and, 235, 237
- defined, 161
- executing commands, 173–180
- in general, 166–168
- with parameters, stored procedures, 169–173
- XmlReader, creating from, 380–382

Command parameters, 268–269

Command properties, DataAdapter, 235

CommandBuilder object, 243–247

CommandText property, 167

CommandTimeout property, 167

CommandType property, 167, 181

Common Language Runtime (CLR), 158

Components, DataSet, 197–198

Concatenated keys, 103

Concurrency conflicts, 266–270

Concurrency violation, 266–267

Connection design-time component, 184–186

Connection object

- of ADO.NET, 162–166
- DataAdapter and, 235, 237
- defined, 161

Connection string, 168

CONSTRAINT clause, 78–80

Constraint object, 198

Constraints

- adding to tables, 78–80
- referential integrity, 28–30

Controls, 391–392, 402–404

COUNT function, 71

CREATE clause, 78

CREATE INDEX clause, 80

Create Scripts. See Scripts

Create UNIQUE option, 15

Criteria, specifying, 55–59

Criterion, 55–56

Current enumeration, 206

D

Data

- adding to DataTable, 202–204
- control, 36
- controlling access to, 108–113
- entry, 16
- files, 96
- group/summarize with SQL, 67–72
- locks, 266–267
- manipulating with SQL, 74–77
- manipulation, 7–8
- in middle tier, 415–422
- types, 8–10
- XML, access with, 323

Data-aware controls, 41–42

Data binding

- .NET data-aware controls and, 41–42
- example of, 36–37
- programmatic, 40–41
- in Visual Basic, 36

Data-bound forms

- creating new records in, 43–44
- deleting records from, 44–45
- validating data entry in, 45–46

Data browser application

- creating, 38–40
- updating records in, 42–43

Data-definition commands, 7

Data Definition Language (DDL)

- advantages of, 97
- defined, 50
- with ExecuteNonQuery method, 173, 174–175
- in SQL, 77–81

Data-definition language script, 24

Data-manipulation command, 74

Data Manipulation Language (DML)

- commands, 76
- defined, 50
- VS.NET and, 74

Data provider, defined, 159

Data Providers, ADO.NET, 156–194

- ADO.NET overview, 156–159
- archive routine, 187–193
- Command object, 166–180
- Connection, Command design-time components, 184–186
- Connection object, 162–166
- DataReader object, 180–184
- objects of, 159–162
- Transaction object, 186

Data source

- DataAdapter and, 234
- populating DataSet from, 235–240
- updating, 241–257

Data tier, 417–420

DataAdapter, ADO.NET, 234–264

methods, properties of, 234–235
 multiple related tables, combining, 258–264
 populating DataSet, 235–240
 Update commands, setting, 242–257
 updating data source, 241–242

DataAdapter Configuration Wizard

command parameters by, 268–269
 SQL Update statement by, 267–268
 update commands with, 254–257

DataAdapter, defined, 161**Database**

accessing with SQL Query Analyzer, 103–108
 ASP.NET, accessing through, 392–405
 ASP.NET, performance, 405–408
 business cases, 3
 connection, 164–165, 167–168
 data types, 8–10
 default, 107
 defined, 2–3
 designing, 4–7
 diagrams, creating, 17–26
 ExecuteNonQuery method and, 174–175
 inconsistent, 28, 31
 inefficient, 31
 normalization, 31–35
 objects, data manipulation with, 7–8
 references, 296, 305
 relationships, 27–31
 removing objects from, 132
 schema, creating, 10–16
 tables and fields, 3
 user interface, creating, 36–47

Database engine, 46**Database platform, 3****Database project, 294–296****Database roles, 126, 407****Database schema. See Schema, database****Database Views**

for data access control, 108
 with Enterprise Manager, 108–111
 in production, 112
 with Query Analyzer batch, 112–113

DataBindings collection, 41**DataBindings property, 38****DataColumn object, 197****DataGrid**

CommandBuilder object and, 246–247
 for data viewing, 275–276, 279–280
 records and, 37
 working with, 402–405

DataReader object

of ADO.NET, 180–184
 data manipulation and, 7
 defined, 161

DataRelation object, 198, 214–219**DataRow object, 198, 207****DataRowVersion, 206****DataSet**

populating with DataAdapter, 234–240
 strongly typed, 158, 285–290
 table and column mappings, 270–272
 XML and, 344–345

DataSet, ADO.NET, 156, 196–231

accessing data from DataTable, 209–214
 adding data to, 202–204
 applications, components of, 196–198
 DataSet component, using, 224–230
 table constraints, 220–224

table relations, 214–219
 updating, 204–209

DataSet component, 224–230**DataSet Generator, 286–287, 288****DataTable object**

accessing data from, 209–211
 adding data to, 202–204
 DataView for, 273–285
 defined, 197
 finding, filtering, sorting rows, 212–214
 populating with DataAdapter, 235–240
 schemas, defining, 198–202
 table relations, 214–219
 updating, 204–209, 241–257

DataTableMappings, 235**DataView object**

viewing data from different sources, 280–285
 viewing data with, 273–280

DataViewManager object, 274**DataViewRowState, 214****Datetime data type, 9****DBConcurrencyException, 269–270****DDL. see Data Definition Language (DDL)****Decimal data type, 9****Default enumeration, 206****DefaultView property, 273****Delete command, 75–76****Delete method, 205****DeleteRule property, 223–224****Deletes, cascading, 30–31****Delimiter, 56****DESC keyword, 59, 60****Descending order sorting, 59****Design-time component, 184–186, 254–257****Detached enumeration, 206****Diagrams, database**

Microsoft Visio and, 19–26
 overview of, 17–19

DiffGram

examples of, 357–363

GetChanges method and, 363–364
 XML format, described, 356–357
 XMLReadMode enumeration value, 348
 XMLWriteMode enumeration value, 355

Disconnected applications, 157
DisplayChildRows, 218
DisplayConstraints, 222
DisplayDataSet subroutine, 209–211
DisplayRelations procedure, 216
Dispose method, 420
Distributed applications, 157
DML. See Data Manipulation Language (DML)
Document Object Model (DOM), 321, 324–325
DROP clause, 80

E

Editing model, DataView, 275
Elements, XML, 318–320
EnforceConstraints property, 220
Entity relationship diagram (ERD), 20
Enumeration, 165, 279
Envelope, 424
Errors, 207–209
ExecuteXmlReader method, 173
ExecuteNonQuery method, 173–178, 192
ExecuteReader method
 DataReader object and, 182–183
 function of, 173, 180
ExecuteScalar method, 173, 178–180
ExecuteXmlReader method, 167
EXISTS test, 137
Explicit update commands, 247–252

Expression property, 197
Expressions, column, 202
Extensible Markup Language (XML)
 ADO.NET support of, 157, 158
 business case, file preparation, 364–380
 classes in .NET, 323–329
 data access and, 323
 DataView and, 285
 DiffGrams, 356–364
 family of technologies, 320–322
 overview of, 318–320
 reading, 344–349
 reports with, 338–340
 SQLXML 3.0 and IIS, extending with, 329–338
 Web Services and, 423, 424
 writing, 349–356
 XmlDataDocument Object, 382–386
 XmlReader creation, 380–382

Extensible Stylesheet Language Transformations (XSLT)
 described, 320, 321
 reports, creating with, 338–340
Extensible Stylesheet Language (XSL), 320, 321. See also Extensible Markup Language (XML)

F

Fields
 accessing with DataReader object, 180–183
 defined, 3
 overview of, 2, 3
 sorting on multiple, 59–60
Fill method
 of DataAdapter, 234, 235
 to retrieve data, 235–240
 table and column mappings and, 270–272
 in typed DataSet, 289

Find method, 212–213, 274
Find Rows method, 274
Float data type, 9
Folders, 297
ForeignKeyConstraint
 for designating foreign key field, 79–80
 row deletion and, 264
 for table constraints, 220–223
Form. See Data-bound form
Fragment, 348
FROM clause, 54–55

G

GET request, 423
GetChanges method, 241–242, 363–364
GetChildRows method, 218–219
GetErrors method, 208
GetNames method, 279
GetRowCount function, 417–420
GetRowCount object, 424–425
GetXml, 355
Grant command, 130
Graphical database schema. see Schema, database
Graphical table building, 97
Graphical tools. See Microsoft Visio
Group queries
 described, 67–69
 having clause and, 69–70
 SQL aggregate functions, 71–72
 SUM function and, 70
Grouping data, 67–72

H

HasErrors property, 208
HasVersion method, 207

Having clause, 69–70
 Headers, descriptive, 135
 Hide column, 112
 HTML client code, 415
 HTML controls, 391
 HTTP protocol, 423–424

I

ID field, 7
 Identity column
 creating, 100–101
 in SQL Server tables, 99
 triggers and, 119
 IgnoreSchema, 348, 355
 IIS (Internet Information Server), 329–338
 Image data type, 9
 IN operator, 59
 Index, designating, 14–17
 InferSchema, 348
 Inheritance, 419
 Insert command, 76–77
 Installation, SQL Server 2000, 87, 88–90
 Int data type, 9
 Intellisense statement, 286, 290
 Internet Information Server (IIS), 329–338
 IsDate function, 413
 Isql, 74
 ItemData property, 276

J

Jet, 27, 100
 Jet database engine, 84, 156
 Joins
 defined, 2
 described, 61–62
 expressing in SQL, 62–64
 outer, 64–65
 Juncture table, 35

K

Keys, concatenated, 103
 Kill command, 132

L

Left join, 65. *See* Outer joins
 LIKE operator, 58
 Lock, 266–267
 Log files, 96
 Logins, 124–126

M

Make-table query. *See* SELECT INTO query
 Many-to-many relationships, 35
 Mappings, 270–272
 Master/detail form, 35
 MAX function, 71
 Memory, system, 87
 Microsoft
 ADO.NET by, 156
 middle-tier technologies and, 412
 Web Services and, 423
 Microsoft Access, 58
 Microsoft Data Engine (MSDE), 86
 Microsoft SQL Server 2000
 business case, database creation, 133–153
 Create Scripts in, 298
 creating tables with, 97–103
 data, controlling access to, 108–113
 database access with Query Analyzer, 103–108
 database, removing objects from, 132
 described, 85–87
 Enterprise Manager for database creation, 94–97

Enterprise Manager, running, 92–94
 installation requirements for, 87
 installing, 88–90
 security attributes for, 129–132
 SQLXML 3.0 and, 329
 start up, controlling, 91–92
 starting and stopping, 90–91
 stored procedures, creating/running, 113–117
 triggers, creating, 118–123
 users and security, managing, 123–129
 view/stored procedure, displaying, 117–118

Microsoft SQL Server 2000 DBA Survival Guide (Spenik and Sledge), 87

Microsoft Visio
 database schema creation with, 10
 schema, viewing/altering with, 19–26

Microsoft.Data.Odbc namespace, 164
 Middle-tier components, 112
 Middle-tier technologies
 for presentation logic, 412–415
 using data in, 415–422

MIN function, 71
 MinimumCapacity property, 201
 Mixed Mode, 90
 Modified enumeration, 206
 Money, 66
 Money data type, 9
 MSDE (Microsoft Data Engine), 86
 Multiple tables, combining, 258–264

N

Names, 256
 Namespaces
 importing, 163–164

for Web Services, 429

in XML, 318

Naming conventions

column mappings for, 271

for objects, 52

in SQLXML 3.0, 334

for tables, 7

for views, 110

Nchar data type, 9

.NET

data-aware controls in, 41–42

Data Provider objects of,
159–162

database connectivity and, 36

databinding with, 39

stored procedures and, 114

XML, classes in, 323–329

.NET Framework

ADO.NET integration with,
157

ADO.NET objects within,
158–159

data manipulation with, 7
middle-tier technologies of, 412

New technology, 156

NewRow method, 202–203

Normalization

overview of, 31–34

relationships, many-to-many, 35

relationships, one-to-many,
34–35

relationships, one-to-one, 34

Ntext data type, 9

Null, defined, 65

Null value, 170, 268

Nvarchar data type, 9

O

Objects

categories of, 12

data manipulation and, 7–8

exposing through Web Services,
424–426

removing from database, 132

XmlDataDocument, 382–386

Odbc Data Provider

function of, 160

ParameterCollection object and,
169

scalar value with, 179–180

ODBC (Open Database Connectivity), 21, 85

OdbcCommand, 172

OdbcConnection object, 162

OLE DataBase (OLE DB), 85

OleDb Data Provider, 160, 169

OleDb namespace, 174–175

OleDbCommand component, 184–186

OleDbConnection component, 184–186

OleDbConnection object, 162

One-to-many relationships, 6, 34–35

Open Database Connectivity (ODBC), 21, 85

OpenSchema method, 162

Operators, 56–59

Optimistic concurrency control, 266–267

OR operator, 56

Oracle .NET Data Provider, 160

ORDER BY clause, 59–60

Orders grid, 284–285

Original enumeration, 206

Osql, 311

Outer joins, 64–65

P

Parameter object, 161, 167, 169–172, 176

ParameterCollection object, 169

Parameters property

of ADO.NET Command object,
167, 169–173

code to assign values to,
250–252

Parent table

combining multiple tables, 261

constraints, 220

relations of, 214–219

ParentRelations property, 217–218

Password, 92

Persisting data, 196

Pessimistic concurrency control, 266

Plumbing, 412. *see also*

Middle-tier technologies

POST request, 423

Presentation logic, 412–415

Preview Data feature, 257

Primary key

designating, 14–17

marking column as, 102–103

methods to generate, 102

PrimaryKey property

for DataView project, 284

Fill method and, 240

finding rows and, 212

setting, 228–229

Print command, 152

Q

Queries

append, 76

calculations with, 65–66

database projects and, 312–315

database schema and, 10

defined, 2, 50

designing with graphical tools,
110

for grouping/summarizing data,
67–72

joining related tables with,

61–65

subqueries, 73

testing with Server Explorer,

51–53

top percentage, 61

union, 72–73

Query Designer, 312–314

R

RDO (Remote Data Objects), 156

Read () method, 182

ReadDataMapped function, 271–272

ReadOnly property, 202

ReadSchema, 348

ReadXML, 347

Real data type, 9

Records

- .NET and, 36
- data-bound forms and, 43–45
- designating source of, 54–55
- nested, 349
- overview of, 3–4
- retrieving, 53–54
- returning top/bottom, 60–61
- updating in data browser application, 42–43
- working with, 36–37

Recordset, 156

References, database, 296, 305

Referential integrity constraints, 28–30

RejectChanges method

- DataSet update and, 204–205, 206
- with ForeignKeyConstraint, 224
- RowUpdating event and, 46

Relational database, 2. See also Database

Relations property

- combining multiple tables with, 258, 261
- for table relations, 216

Relationships

- cascading updates/deletes, 30–31
- between controls and data fields, 40–41
- creating with Server Explorer, 18
- described, 5

designing, 5–7

many-to-many, 35

one-to-many, 6, 34–35

one-to-one, 34

overview of, 27–28

referential integrity constraints, 28–30

Remote Data Objects (RDO), 156

Remoting data, 196

Remove method, 205

RemoveAt method, 44–45

Reports, 338–340

Return value

- of ExecuteNonQuery method, 174, 176
- of stored procedure, 172–173

Reusable middle-tier components, 417–420

Reverse engineering, 20–22

Revoke command, 130

Right join, 65

Roles, 126, 407

ROUND function, 66

Row filter expression, 273

Row state filter, 273

RowError property, 207–208

RowFilter property, 274, 279

Rows

- accessing data from, 209–211
- adding to DataTable, 202–204
- concurrency conflicts and, 266–267, 269
- in DataTable schema, 201
- DataGridView object for, 273–274
- deletion of, 264
- finding, filtering, sorting, 212–214
- typed DataSet and, 289
- updating data source and, 241–242
- updating in DataTable, 204–209

RowState enumeration, 205–206

RowUpdating event, 45

Rule properties, 223–224

S

Scalability, 157, 266

Scalar value, 178–180

Schema, database

- creation of, 10
- of DataTable, defining, 198–202
- index/primary key, designating, 14–17
- software design methodology vs., 27
- typed DataSet for, 285
- Visio and, 19–26
- Visual Studio and, 11–14

Schema Editor, 287–288

Scripts, 297–311

- change, 302–304
- command files and, 306–311
- create, 298–301
- running, 304–306

Security

- attributes in Query Analyzer, 129–132
- Enterprise Manager for, 123–129
- in SQLXML 3.0, 333
- testing in SQL Query Analyzer, 129

SELECT clause, 53–54

SELECT INTO query, 77, 191–192

Select method

- DataGridView and, 273
- for rows, 213–214
- for updating data source, 241

Select statement, 254, 268

SelectCommand property

- CommandBuilder object and, 243
- with DataAdapter, 235
- for loading tables in DataSet, 239

Semantics, 319

Server controls, 391

Server Explorer

- cascading updates/deletes and, 30–31

- data entry with, 16
- database connection with, 36–37
- database creation with, 11–14
- database diagram creation with, 17–19
- index/primary key designation with, 14–16
- records in, 36–37
- testing queries with, 51–53
- testing referential integrity constraints with, 28–29
- Server.HTMLEncode, 407**
- SET clause, 74**
- SetColumnError method, 208**
- Setup Type dialog box, 88**
- ShowCustomers subroutine, 416**
- ShowGetRowCount method, 425**
- Side-by-side versioning, 412**
- Simple Object Access Protocol (SOAP)**
 - described, 321
 - for Web Services, 423–424, 427
- Sledge, Orryn, 87**
- Smalldatetime data type, 9**
- Smallint data type, 9**
- SOAP. See Simple Object Access Protocol (SOAP)**
- Software design methodology, 27**
- Solution Explorer**
 - for Create Scripts generation, 299, 300
 - scripts, running within, 304
- Sorting**
 - DataView based on, 273, 284
 - with ORDER by, 59–60
 - table design and, 6
- Spenik, Mark, 87**
- Sp_help, 106**
- Sp_helptext, 118**
- Sp_who, 131–132**
- SQL. See Structured Query Language (SQL)**
- SQL Books Online, 87**
- SQL DataAdapter object, 43**
- SQL Join, 239, 244**
- SQL Query Analyzer**
 - batch, creating views with, 112–113
 - database access with, 103–108
 - defined, 74
 - security in, 129–132
 - stored procedures in, 116–117
- SQL Script**
 - database creation with, 133–153
 - for loading data, 117
- SQL Server. See also Microsoft SQL Server 2000; Server Explorer**
 - database diagramming for, 19
 - logins, adding ASPNET User, 393–399
 - Microsoft Access and, 58
- SQL Server Authentication, 125**
- SQL Server database engine, 30**
- SQL Server Enterprise Manager**
 - automatic scripts and, 306
 - creating views in, 108–111
 - database creation with, 94–97
 - managing roles with, 126–128
 - running, 92–94
 - stored procedures in, 114–116
 - table creation with, 98–103
- SQL Service Manager, 90–91**
- SQL statements, 241, 282**
- SQL Update statement, 267–268**
- SqlClient Data Provider**
 - for data retrieval, 236
 - ParameterCollection object and, 169, 170
 - performance of, 160
- SqlCommand component, 185**
- SqlCommand object, 167**
- SqlCommandBuilder, 245–246**
- SqlConnection component, 185**
- SqlConnection object, 162, 167–168**
- SqlDataAdapter, 240, 286**
- SQLXML, 338–340**
- SQLXML 3.0**
 - configuration results of, 337–338
 - installing/configuring, 329–337
 - SQL Server, extending with, 329
- Static variables, 405**
- STDEV function, 71**
- Stored procedures**
 - ASP.NET, performance tuning with, 405–408
 - Command object and, 172–173
 - described, 113–114
 - displaying text of, 117–118
 - ExecuteNonQuery method and, 176, 178
 - ExecuteScalar method and, 178–180
 - explicit update commands and, 248–249
 - in middle tier, 416–417
 - middle-tier components vs., 112
 - sp_help, 106
 - sp_who, 131–132
 - in SQL Query Analyzer, 116–117
 - in SQL Server Enterprise Manager, 114–116
 - system-provided, 107
 - in update commands, 252–253
 - updating data source and, 241
- Strongly typed DataSets, 285–290**
- Structured Query Language (SQL)**
 - aggregate functions of, 71
 - calculations with, 65–66
 - FROM clause in, 54–55
 - AS clause in, 67
 - command categories, 50
 - command naming conventions, 105

Structured Query Language (SQL) *(continued)*

commands to Query Analyzer, 108

data manipulation with, 74–77

DDL commands in, 77–81

delete command, 75–76

group/summarize data in, 67–72

insert command, 76–77

joining related tables with, 61–65

ORDER BY clause in, 59–60

query, defined, 50

query testing with Server Explorer, 51–53

RDS systems and, 50

SELECT clause in, 53–54

SELECT INTO query and, 77

subqueries in, 73

TOP keyword in, 60–61

union queries with, 72–73

update command, 74–75

WHERE clause in, 55–59

Subqueries. *See* **Queries**

SUM function, 70, 71

System base classes, 159

System.Data.Odbc namespace, 160, 161

System.Data.OleDb namespace, 160, 161

System.Data.SqlClient namespace, 160, 161

T

TableDirect command, 181–182

TableMappings property, 270–272

Tables. *See also* **DataSet;**

DataTable

adding constraints to, 78–80

combining multiple, 258–264

creating with SELECT INTO, 77

defined, 2, 3

designing, 5–7

joining related, 61–65

in SQL Server, 97–103

virtual, 121

Technology, 156, 429

Test string representation, 165

Text data type, 9

Three-letter acronym (TLA), 156

Timestamp, 266–267

Tinyint data type, 9

TOP keyword, 60–61

Top percentage queries, 61

Transaction object, 186–193

Triggers

creating, 118–120

for soundalike searches, 120–123

TRUSTED_CONNECTION, 399–402

Try-Catch block

for archive routine, 191, 192

with DBConcurrencyException, 269–270

for production code, 165

Typed DataSets, 285–290

U

Unchanged enumeration, 205

Unions. *See* **Queries**

Unique property, 202

UniqueConstraint, 220–223

UniqueIdentifier data type, 10

Update commands

with CommandBuilder object, 243–247

concurrency conflicts and, 267–268

embedding business logic in, 252–253

with ExecuteNonQuery method, 173, 176–178

explicit update commands, 247–252

setting, 242–243

for SQL data manipulation, 74–75

Update method, 234, 235, 241–242

UpdateCommand object, 268–269

UpdateRule property, 223–224

Updates, cascading, 30–31

USE command, 107

User Control, 402

User interaction, 197

User interface, 36–47

Username, 92

V

Validation rules, 45, 46

Values, 268, 269

VAR function, 71

Varbinary data type, 10

Varchar data type, 10

VB.NET. *See* **Visual Basic.NET (VB.NET)**

View Designer, 63–64

Views. *See also* **DataView object**

for data access control, 108–113

displaying text of, 117–118

queries and, 51–53

Virtual directories, 331–336

Virtual names, 335–336

Visio. *See* **Microsoft Visio**

Visual Basic.NET (VB.NET)

data binding with, 36

data in middle-tier, 417–422

enumeration representation

with, 165–166

middle tier in, 413–415

MSDE and, 86

nonsupport of ItemData property, 279

upgrading to, 2

XML and, 318

Visual Database tools, 294, 299

**Visual Studio Toolbox,
184–186, 224–230**

Visual Studio.NET (VS.NET)

concurrency conflicts in, 267
 Connection object and, 162–164
 database creation with, 11–14
 database project, 294–296
 database references, 296
 DDL commands and, 78
 features of, 2
 libraries available in, 412
 MSDE and, 86
 Odbc provider and, 160
 queries, 312–315
 scripts, 297–311
 viewing data, 281–285

W

W3C (World Wide Web Consortium), 423

Web Reference, 426–428

Web Services

.NET Framework and, 412
 accessing programmatically,
 426–429
 described, 423–424
 exposing objects through,
 424–426

**Web Services Description
Language (WSDL), 423, 427**

Web sites

for code listings, 329
 for code samples, 402
 for SQLXML 3.0, 329
 on XML, 320

WebForms, 412–415, 419–420.

See also ASP.NET

WHERE clause

concurrency conflicts and, 267,
 268, 269
 operators in, 56–59
 specifying criteria with, 55–56
 update commands and, 254

WHERE criteria, 74

While loop, 182–183

Wildcard characters, 58

**Windows API (Application
Programming Interface),
159**

**Windows Authentication
Mode, 89–90**

Windows Forms applications

binding, programmatic, 40–41
 data-aware controls in .NET,
 41–42
 data-bound forms and, 43–46
 data browser application, creat-
 ing, 38–40

data browser, updating records
 in, 42–43
 records, working with,
 36–37
 user interface overview, 36
 validation, database engine
 level, 46

**World Wide Web Consortium
(W3C), 423**

WriteSchema, 355

**WSDL (Web Services Descrip-
tion Language), 423, 427**

X

**XML Path Language (XPath).
See also Extensible Markup
Language (XML)**

described, 320, 321
 working with, 325–329

**XmlDataDocument Object,
382–386**

XmlDocument, 325–328

XmlNode, 325–326

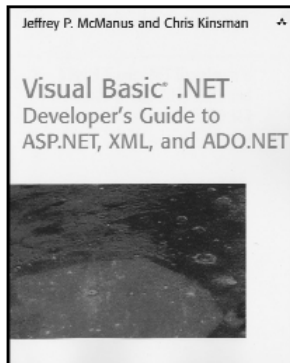
XmlReader, 380–382

XMLReadMode, 348, 355

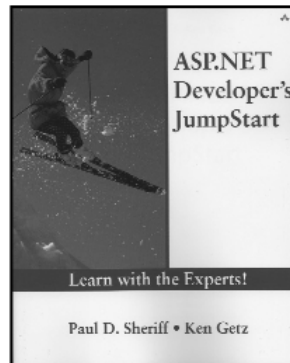
XMLWriteMode, 355

**XPATH. *See* XML Path Lan-
guage (XPath)**

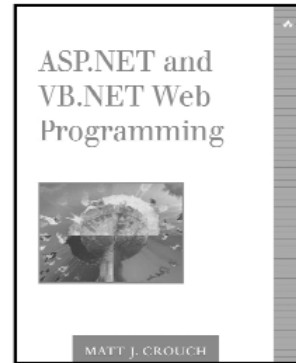
Also Available from Addison-Wesley



0-672-32131-9



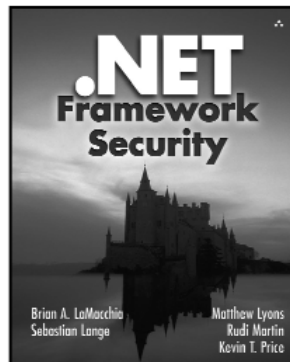
0-672-32357-5



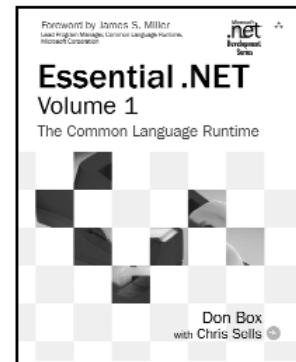
0-201-73440-0



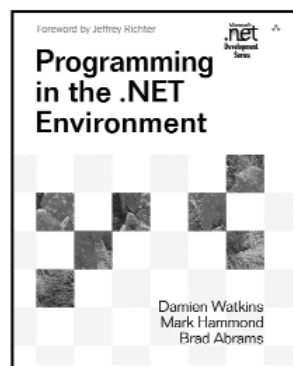
0-672-32156-4



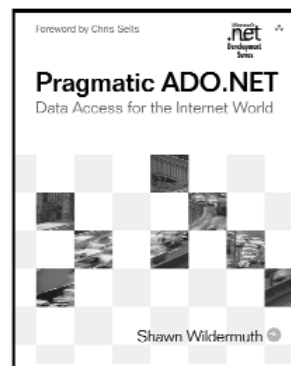
0-672-32184-X



0-201-73411-7



0-201-77018-0



0-201-74568-2

For more information on these titles, including sample chapters, please visit www.awprofessional.com.



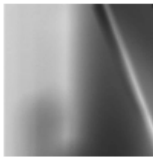
www.informit.com

YOUR GUIDE TO IT REFERENCE



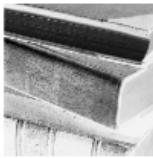
Articles

Keep your edge with thousands of free articles, in-depth features, interviews, and IT reference recommendations – all written by experts you know and trust.



Online Books

Answers in an instant from **InformIT Online Book's** 600+ fully searchable on line books. For a limited time, you can get your first 14 days **free**.



Catalog

Review online sample chapters, author biographies and customer rankings and choose exactly the right book from a selection of over 5,000 titles.



Register Your Book

at www.awprofessional.com/register

You may be eligible to receive:

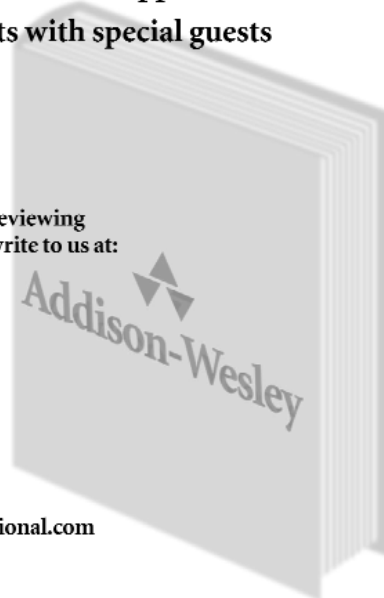
- Advance notice of forthcoming editions of the book
- Related book recommendations
- Chapter excerpts and supplements of forthcoming titles
- Information about special contests and promotions throughout the year
- Notices and reminders about author appearances, tradeshows, and online chats with special guests



Contact us

If you are interested in writing a book or reviewing manuscripts prior to publication, please write to us at:

Editorial Department
Addison-Wesley Professional
75 Arlington Street, Suite 300
Boston, MA 02116 USA
Email: AWPro@aw.com



Visit us on the Web: <http://www.awprofessional.com>