

Index

A

- attributes, 498
- Accent sensitivity option, 267
- Access Control Lists (ACLs), 482
- Access reports, converting, 380–381
- Accounts
 - in installation, 47–48
 - user. *See* Users and user accounts
 - Web service, 53–56
- ACLs (Access Control Lists), 482
- Action property, 368–369
- Activation, configuring, 70–71
- Active Directory Domains, 668
- Add method in IDataParameterCollection, 626–627
- Add New Data Source option, 252
- Add New Item dialog, 249, 444, 451–452, 456, 459–460
- Add New Report screen, 113
- Add/Remove Windows Components dialog, 667
- Add Web Reference dialog, 552–557
- Add Windows Components Dialog, 668
- Administrators
 - credentials for, 48
 - in role-based security, 134
 - tasks for, 208
- Administrators Group
 - permissions for, 139
 - security with, 230–231
 - user accounts in, 211–213
- ADO.NET DataSet, 11
- Advanced Textbox Properties dialog, 385
- AdventureWorks2000 sample database
 - installing, 53
 - Report Project wizard for, 88
- Aggregates
 - in Chart controls, 421
 - expressions for, 293
 - for Report Parameters, 291
 - Report Processor for, 271
 - in Report wizard, 106
 - for ReportItems, 378
 - RowNumber and RunningValue
 - functions, 335–336
 - in Textbox controls, 332
- Alert boxes in Report Manager, 527–528
- Aliases for DataSet fields, 269
- Alignment in Matrix reports, 120
- AllCode evidence, 477
- AllCodeMembershipCondition class, 477
- Allow History to be Created Manually option, 177
- AllowPartiallyTrustedCallersAttribute attribute, 484
- Ampersands (&) in URLs, 499
- Anarchists, 220
- and operator in DataSet filters, 278
- Annotating
 - Chart controls, 408–413
 - Table controls, 372–377
- Appearance tab, 419–420
- Application Directory evidence, 477
- Application event logs, Data Processing extension for, 644–647
- Application Name clause for subscriptions, 184

710 Index

- Application Name property
 - in connection strings, 92, 255
 - for Data Sources, 87, 91–93, 252
- ApplicationDirectoryMembershipCondition class, 477
- Area charts, 400
- ArrayList collection, 627
- ASP.NET
 - IFrameless approach, 600–601
 - web forms for parameter collection, 546
- aspnet_regiis.exe process, 65
- aspnet_wp.exe process, 66, 598–599
- Assemblies
 - Code Access Security evidence for, 473, 475–479
 - expressions in, 17
 - FullTrusts for, 609
- AssemblyKeyFile attribute, 485
- AssemblyVersion attribute, 307–308, 485–487
- Assert method in debugging, 563–565
- AssertedBackColor function, 472, 479
- Assigning roles, 139–148, 581–582
- Asterisks (*) in DataSet filters, 272
- At signs (@) for query parameters, 280
- Auditing Data Sources, 234
- Authentication Methods dialog, 560
- Auto label positioning, 412
- Auto-starting option, 56
- AutoSize setting, 362
- Available values for Report Parameters, 286–290
- Axes in Chart controls, 392–393, 398
- B**
- B/W (black and white) printers, 417–418
- BackgroundImage property, 352–355, 415
- BackgroundRepeat property, 353
- Backing up policy files, 467
- Bands in Report Designer, 15
- Bang operator (!) in DataSet filters, 274–275
- Bar charts, 400
- Base name element, 458–459
- Batches for roles, 581–582
- Behavior files, 528
- Behaviors in Report Manager, 527–530
- Between operator in DataSet filters, 275
- Binary comparisons in DataSet filters, 273
- Binary Interchange File Format (BIFF), 155
- Binary Large Objects (BLOBs)
 - for images, 352–353
 - PublicKey, 488
 - Report Processor for, 29–30
- BinaryWrite method, 594, 597
- Binding
 - to controls, 270, 331–332, 338
 - query parameters, 282
 - in report layout, 322
 - sorting expressions, 341–342
 - to versions, 485–486
- Bit lengths for certificates, 676
- Black and white (B/W) printers, 417–418
- Blank command, 500
- BLOBs (Binary Large Objects)
 - for images, 352–353
 - PublicKey, 488
 - Report Processor for, 29–30
- Body section in Report Designer, 16
- BOL (Books Online) help file, 45, 707–708
- Bookmark action, 369
- Bookmark property, 368
- Bookmark referencing for Document Maps, 368
- Books Online (BOL) help file, 45, 707–708
- Boolean data type, 285
- Boost Table Report.RDL template, 455
- BoostStyleSheet.dll file, 493
- BoostStyleTemplates.xml file, 490, 493
- Border property, 416
- Bottom N operator, 275
- Break method
 - for Data Processing extensions, 629
 - for exception handling, 565

- for rendering, 597–598
- Broken Data Sources, repairing, 574–578
- Browse-only permissions, 143
- Browser role, 33, 141–142
- Browsers
 - credentials for, 134–139
 - assigning roles to user accounts, 139–145
 - roles and tasks in, 145–148
 - languages for, 339
 - for previewing reports, 319
- Brute-force attacks, 648
- Bubble charts, 400, 419–422
- Business Intelligence Projects, 6, 247–248
- C**
- C# projects, 551
- CA Identifying Information screen, 670
- Cached Snapshots, 30–31
- Caching
 - Intermediate Format, 30–32
 - managed reports, 34–35, 167–170
 - for report previews, 320–321
- Calculated fields
 - in DataSets, 268–270
 - in Matrix controls, 425
- Calendar controls, 172
- Camelcase, 104
- CanGrow property, 334
- CanShrink property, 334
- CAs. *See* Certificate Authorities (CAs)
- CAS. *See* Code access security (CAS)
- Cascading Parameters feature, 294–297
- Cascading style sheets (CSSs), 461
 - for behaviors, 527–530
 - for company logos, 526–527
 - creating, 461–462, 488–493
 - parameters area in, 530–534
 - for Report Manager, 523–525
- Case sensitivity
 - in collation sorting, 267
 - in DataSet filter comparisons, 273–274
 - in policy files, 70
- in searches, 149
- Casual style
 - for Matrix reports, 117
 - for tables, 102
- CatalogItems class, 496, 566–569
- Category fields
 - for Chart controls, 401–402
 - in Landing Zones, 395–396
- CD keys, 45–46
- CDATA section, 529
- CDOs (Collaboration Data Objects), 701
- Certificate Authorities (CAs)
 - for access, 653–654
 - for domains, 652
 - installing, 666–670
 - obtaining certificates from, 666–667, 670–693
 - selecting, 652–653
 - for SSL, 666–667
 - stand-alone, 693–695
- Certificate Authority snap-in, 687–688
- Certificate dialog, 664
- Certificate Request File Name screen, 680
- Certificate request files, 658
- Certificate Request Submission screen, 681
- Certificate Revocation Lists (CRLs), 653
- Certificate Services ISAPIs, 670
- Certificate Summary screen, 692
- Certificate Wizard, 690
- Certificates, 661–662
 - CAs for. *See* Certificate Authorities (CAs)
 - HTTP requests. *See* HTTP certificate requests
 - IIS certificate wizard for, 654–658
 - issues with, 658–659
 - obtaining, 666–667, 670–693
 - for web servers, 40, 43–44, 670–693
- Certification Authority Type screen, 669
- certnew.cer file, 690–691
- certnew.p7b file, 690–691
- certreq.txt file, 684

712 Index

- Change or Remove Instance dialog, 82–83
- Changed data, auditing, 234
- Chart controls
 - annotating, 408–413
 - axes in, 392–393, 398
 - bubble and scatter charts, 419–423
 - color in, 416–419
 - creating, 401–402
 - data for, 389–391
 - history, 387–389
 - images in, 354
 - Landing Zones in, 391–394
 - Category Fields, 395–396
 - Data Fields, 394–395
 - Series Fields, 397
 - pie charts and doughnut charts, 405–408
 - programming, 403–405
 - stock charts, 413–415
 - types, 399–400
 - user interface for, 391–398
- Chart Properties dialog, 399, 416
- Chart property pages, 388
- Charting Property Pages dialog, 20–21, 24–25
- Choose a Certificate Authority screen, 679
- Choose the Deployment Location screen, 103
- Choose the Table Layout screen, 101
- Choose the Table Style screen, 101–102
- Class identifier (clsid) element, 456
- Class libraries
 - for Data Processing extensions, 616–617
 - for sharing code, 306–314
- Class properties, accessing, 312–314
- Close Method, 622
- CLR (Common Language Runtime), 17–18
- CLRSharedFunction.RDL report, 311
- clsBuildSQL class, 308
- clsBuildSQL.vb file, 312
- clsid (class identifier) element, 456
- Code access security (CAS), 18, 607
 - AllowPartiallyTrustedCallersAttribute attribute for, 484
 - AssemblyKeyFile attribute for, 485
 - AssemblyVersion attribute for, 485–487
 - code blocks for, 462–466
 - CodeGroups for, 475–478
 - NamedPermissionSets for, 473–475
 - permissions in, 471–473
 - policy configuration files for, 69, 466–471, 487–488
 - StrongName key in, 483–484
 - StrongName membership condition in, 482–483, 487–488
 - style sheets for, 461–462, 488–493
 - URL evidence in, 478–482
- Code and code blocks
 - for Data Processing extensions, 617–619
 - permissions, 471–472
 - sharing, 306–314
 - for style sheets, 462–466
- Code tab
 - for code blocks, 463
 - for custom code functions, 302–303
 - for images, 364–365
 - for Report Properties, 310
- CodeBehindBackColor function, 462–463, 468
- <CodeGroup> element, 480, 487–488
- CodeGroups
 - configuring, 475–484
 - for rspreviewpolicy.conf, 612
 - for rssrvpolicy.config, 492, 611–612
- Coercion with DataSet filters, 277
- Collaboration Data Objects (CDOs), 701
- Collation Sorting Styles, 266–268
- Colons (:)
 - for query parameters, 280
 - in URLs, 499
- Color in Chart controls, 416–419

- Column charts, 400
- Columns
 - in Matrix controls, summing, 436–437
 - in Report wizard, 107
 - width, 118–119
- Columns property, 16, 325
- ColumnSpacing property, 325
- Comma-delimited (CSV) files, 155
- Command interface for Data Processing
 - extensions, 617
- Command line
 - for configuration, 70–72
 - for installation, 51
- Command names in SSL installation, 654, 657–658, 677–678
- Command text for DataSets, 239–240
- Command type for DataSets, 259
- Commands in URLs, 499–500
- Commands tab, 249
- CommandText element, 258
- CommandText property, 629–630
- CommandTimeout property, 630
- CommandType property, 630–631
- Comments in policy files, 70
- Common Language Runtime (CLR), 17–18
- Company logos in Report Manager, 526–527
- Comparisons in DataSet filters, 273–274
- Completing the Report Wizard screen, 104, 117–118
- Completing the Web Server Certificate Wizard screen, 682–683, 692
- Component Update dialog, 52
- Concurrent connection limitations of IIS
 - on XP, 41–42, 136, 703–705
- Confidentiality. *See* Security
- <configuration> element, 486
- Configuration files
 - for Data Processing extensions, 641–644
 - policy, 69
 - RSReportDesigner.config, 69
 - RSReportServer.config, 67
 - RSWebApplication.config, 68–69
 - for SSL, 68, 696–697
 - vs. XML files, 70
- Confirmation page, 695
- Connection interface for Data Processing
 - extensions, 617
- Connection strings, 6, 224
 - Application Name property in, 92, 255
 - credentials in, 256
 - Data Link Property wizard for, 91
 - displaying, 93
 - encryption with, 234
 - for EventLog Data Processing extension, 644–645
 - for new reports, 251
 - Report Server for, 224–225
- ConnectionString property, 615, 621, 623
- ConnectionTimeout property, 621, 623, 705
- Containers, temporary, 346–351
- Contains conditions in searches, 568
- Content Manager role, 33, 140–141
- Context-sensitive Help hyperlink, 138
- Controls
 - binding, 270, 322, 331–332, 338
 - Chart. *See* Chart controls
 - creating, 329–330
 - Data Region, 332–333
 - designing, 116
 - Image, 352–353
 - adding to reports, 355–356
 - BackgroundImage property for, 353–354
 - layout for, 11–16
 - List, 333–334
 - grouping, 345–351
 - sorting, 339–343
 - Matrix. *See* Matrix controls and reports
 - overlapping, 381
 - RepeatWith property for, 336–338
 - right margins for, 330
 - styles of, 117

714 Index

Subreports, 381–385
 Table, 335, 369–372
 customizing and annotating, 372–374
 recursive data structure handling in,
 374–377
 in Report Designer, 16
 Textbox. *See* Textbox controls
 Converting Microsoft Access reports,
 380–381
 Copying certificate requests, 684–685
 Count function
 for bubble charts, 421
 in Report wizard, 106
 CountDistinct function, 433–436
 Create a New Certificate option, 656
 Create Linked Report option, 199–200
 CreateCommand method
 in Connection, 640
 in EventLogConnection, 624
 CreateDataSource method, 576
 CreatedBy property, 567
 CreateFolder method, 581, 584
 CreateHistorySnapshot method, 585
 CreateParameter method, 634
 CreateReport method, 584–585
 CreateReportHistorySnapshot method,
 585–586
 CreateRole method, 579
 CreateSchedule method, 570, 573
 CreationDate property, 567
 CreationTime property, 314
 Credentials
 activation for, 70–71
 in connection strings, 256
 Data Link Property wizard for, 91
 for Data Processing extensions,
 614–615, 639, 648–649
 encrypted, GUIDs for, 460
 encrypting and storing, 72
 for EventLog Data Processing
 extension, 645
 in HTML postbacks, 516–517
 for installation, 48

Report Server for, 224–225
 in SOAP, 559–561
 SSL for, 665
 stored, 246, 648–649
 web browser, 134–139
 assigning roles to user accounts,
 139–145
 roles and tasks in, 145–148
 Credentials tab, 645
 CRLs (Certificate Revocation Lists), 653
 Cryptography. *See* Encryption
 Crystal Reports, 2
 CSSs. *See* Cascading style sheets (CSSs)
 CSV (comma-delimited) files, 155
 Currency format
 in Matrix reports, 119
 in Report wizard, 107
 in RSReportHost, 21
 Textbox controls for, 338–339
 Custom code
 functions, 301–306
 for transforming images, 364–365
 Custom report views, 160–161
 Customizing Table controls, 372–377
 CustomParameters function, 533
 CustomParameters.htc file, 532–533

D

DailyRecurrence option, 570
 Data binding
 to controls, 270, 331–332, 338
 in report layout, 322
 Data caching
 Intermediate Format, 30–32
 managed reports, 34–35, 167–170
 for report previews, 320–321
 Data-driven subscriptions, 35, 182–191
 .data extension, 320
 Data Fields in Landing Zones, 394–395
 Data Link Dialog applet, 255
 Data Link Properties dialog
 for connections, 91–93, 252

- for Data Processing extensions, 253–254
 - for new reports, 251
- Data Link Property wizard, 91
- Data Options tab, 266
- Data Processing extensions, 3, 605
 - class libraries for, 616–617
 - coding, 617–619
 - configuration files for, 641–644
 - deploying, 640–641
 - designing, 615–616
 - EventLog for, 644–647
 - EventLogConnection for, 619–624
 - EventLogDataReader for, 636–639
 - IDbCommand and
 - IDbCommandAnalysis for, 628–636
 - impersonation in, 639–640
 - for Microsoft Samples, 606–614
 - for new reports, 252–256
 - Parameters and ParameterCollection for, 625–628
 - security for, 648–649
 - for writing reports, 614–615
- Data Region controls, 16, 332–333, 382
- Data Source page, 168–169
- Data Sources, 2–3, 237–238
 - Application Name properties for, 87, 91–93
 - characteristics, 238
 - configuring, 206–207
 - Connection strings for, 252
 - creating, 251–256
 - for Data Processing extensions, 252–256, 614, 639
 - deleted, repairing, 574–578
 - for EventLog Data Processing extension, 644–645
 - for linked managed reports, 198–199
 - mirrored, 245–246
 - passwords for, as URL parameters, 511–513
 - in rendering reports, 163–164
 - in Report Designer, 8
 - in Report Manager, 34, 202–207
 - in Report wizard, 89–91, 114
 - security for, 225–228
 - auditing, 234
 - credentials stored for, 224–225
 - integrated security for, 230–233
 - RSExecRole membership, 228–229
 - runtime prompting, 223–224
 - shared, 203–204
 - TLS, 233–234
 - SOAP methods for, 576–578
 - suites of, 244–245
 - templates for, 460
- Data tab
 - for Chart controls, 393, 403–405, 410–411
 - for custom code functions, 304
 - for EventLog Data Processing extension, 645
 - for stored procedures, 261
- Data Transformation Services (DTS) project, 214
- Data types for Report Parameters, 285–286
- Database Creators, 48
- Database fields for DataSets, 268–270
- Database images, 355
- DatadrivenFileShareExample table, 185–191
- DataReader interface, 617
- Dataset dialog, 631
- DataSet Fields collection, 301
- DataSet Properties dialog, 261
- DataSetName property, 332
 - for Matrix controls, 427
 - for Table controls, 370
- DataSets, 6, 237–238
 - characteristics, 239–241
 - for Chart controls, 389–390
 - creating, 256–258
 - fields for, 268–270
 - filtering, 270–271

716 Index

- case-sensitive comparisons in, 273–274
- NULL fields in, 272
- string fields in, 272
- wildcards in, 272
- query designers for
 - generic, 258–260
 - GuiQD, 260–263
 - query options for, 265–268
 - for Report Designer, 8–11
 - from stored procedures, 241
 - transactions for, 263–265
- DataSource table security, 225–227
- DataSourceCredentials parameter, 591
- DataSourceDefinition class, 576
- <DataValue> element, 403
- Dates
 - in Matrix controls, 425–426
 - in parameters, 282
- DateTime data type, 285
- db_datareader role, 143, 153
- Debug.Assert method, 563–565
- Debugger.Break method
 - for Data Processing extensions, 629
 - for exception handling, 565
 - for rendering, 597–598
- Debugging
 - Data Processing extensions, 629
 - in installation, 66
 - in SOAP, 562–565, 598–599
- DebugLocal configuration, 311
- DebugLocal mode, 20, 464–465
- Decoded URL items, 498
- Default generic query designers, 9
- Default Rendering extension, 193
- Default URLs for Report Manager, 33
- Default values for Report Parameters, 286, 290–292
- Default Web Site Properties dialog, 654–655, 673
- DefaultCredentials class, 560, 588
- <DefaultRenderingExtension> element, 192
- DefaultTraceSwitch attribute, 66
- Define Query Parameters dialog, 281, 632
- Delayed or Immediate Request screen, 675
- Delayed signing, 485
- Deleted Data Sources, 204–206, 574–578
- Deleting
 - folders, 144–145
 - Reporting Services, 82–84
 - snapshots, 176
- Delivery extensions
 - printing, 28–29
 - in Report Server, 27–29
 - in Subscriptions, 192–193
- Deploy.bat file, 309, 641
- Deploying
 - in Data Processing extensions, 640–641
 - reports, 317–321
 - Matrix, 129
 - in Report wizard, 102–103, 110–112
 - tuned, 244
- Deployment folders, 242–244
- Description element, 456–457
- Description property in searches, 567
- Descriptions
 - for roles, 146
 - in templates, 456–457
- Design the Matrix screen, 116
- Design the Query screen, 94–95, 98–99, 115
- Design the Table screen, 100
- DesignerParameters property, 633
- Details Grouping dialog, 348, 375–376
- Details view, 144, 156–157
- Developer Edition, 36
- Developer Role Definition, 578–579
- Development server
 - Data Sources for, 244–246
 - deployment folders for, 242–244
- Devnvc.exe.config file, 486
- DeviceInfo string, 590, 596
- Diagnostics namespace, 637
- Different servers, joining tables from, 257

- Directory Security tab, 654–655, 673, 690
- DisableISec.rss script, 232
- <DisplayErrorLink> element, 69, 145
- Dithering, 417
- DNS names in SSL installation, 654, 657–658, 677–678
- Document Maps
 - displaying and hiding, 153
 - for drilldown, 367–369
 - in Report Designer, 18–19
- Documentation, refreshing, 84
- Domain controllers
 - certificate authorities, 652–654
 - installation on, 42
- <DOMAIN> element, 135
- Dot operator (.) in DataSet filters, 274
- Doughnut charts, 400, 405–408
- Download CA certificate option, 690
- DPAPI libraries, 460
- Drilldown, 150–151, 365–369
- Drivers, printer, 28
- DROP DATABASE statements, 222
- dsp: prefix, 501
- dspe: prefix, 501
- dsu: prefix, 501
- DTS (Data Transformation Services)
 - project, 214
- Dundas Chart control, 388, 390
- Duplicate names in Data Processing
 - extensions, 618
- Dynamic SQL queries
 - custom code functions for, 301–306
 - executing, 298–301
- E**
- E-mail
 - SMTP configuration for, 60–62, 699–700
 - for subscriptions, 192
- Edit Chart Value dialog, 404
 - for bubble charts, 419–421
 - for labels, 410–412
 - for Subreports, 384
- Edit Expression dialog, 293–294
- Edit filters for Knowledgebase, 707–708
- Edit Item Security option, 140, 194–195
- Edit Metabase Data dialog, 704
- Edit Property Value dialog, 92
- Edit References dialog, 484–485
- Edit Role assignment web page, 146
- Editing
 - data-driven subscriptions, 185
 - DataSet fields, 269
 - Textbox controls, 331
- Embedded credentials, 615
- Embedded images, 355–356
- Embedded Images dialog, 356
- Enable drilldown option, 116
- EnableIntegratedSecurity property, 231–232
- Encoding parameter, 591
- Encrypted content, removing, 71–72
- Encryption
 - bit length for, 676
 - for certificates, 656
 - for credentials, 72, 460
 - for passwords, 136, 512
 - SSL for, 57
 - in strong naming, 482
 - for subscriptions, 188–189
 - TLS, 225, 233–234, 246
- EndDate property, 571–572
- EndDateSpecified property, 572
- Enterprise Edition, 37
- Equal signs (=) in filters, 273, 275
- Equals conditions in searches, 567
- Error messages, options for, 69
- Escaped URL items, 498–499
- Evaluation Edition, 36
- EventLog class, 618, 637–639
- EventLog Data Processing extension, 644–647
- EventLogCommand class, 625, 628
- EventLogCommandClass interface, 627
- EventLogConnection class, 619–622
 - ConnectionTimeout property, 623

718 Index

- CreateCommand method, 624
 - LocalizedName property, 623
 - Open and Close methods, 622
 - SetConfiguration method, 622–623
 - State property, 624
 - EventLogDataExtension class, 623
 - EventLogDataParameter Class, 626–627
 - EventLogDataParameterCollection
 - interface, 627, 633
 - EventLogDataReader class, 635–639
 - EventLogParameters collection, 638
 - Evidence for assemblies, 473, 475–479
 - Evil-minded perpetrators, 220–221
 - Exception handling in SOAP, 560, 562–565
 - Exchange mailboxes, 60
 - Exclamation points (!) in DataSet filters, 274–275
 - <ExcludedRenderFormats> element, 193
 - ExecuteBatch method, 581
 - ExecuteReader class, 635–636
 - Executing stored procedures
 - generic query designer for, 259–260
 - GuiQD for, 261
 - Execution logging, 214
 - Execution page, 167–168
 - Execution permissions, 465, 473
 - Execution properties, rights to, 164–165
 - Execution time limitations for managed reports, 174–178
 - Execution timeouts in Site Settings, 213
 - ExecutionLog table, 214, 440–441
 - ExecutionTime variable, 328
 - Exists method, 637
 - Expiration date for snapshot schedules, 172–173
 - Expiration time for Report Server sessions, 509
 - Export formats lists, 155
 - Exporting
 - managed reports, 154–156
 - Matrix controls, 438–440
 - <Expression> element, 293
 - Expression property, 124
 - Expressions, 293–294
 - in assemblies, 17
 - for Chart control properties, 405
 - for DataSet filters, 273
 - for Matrix reports, 124
 - Preview tab for, 300
 - sort, 340–342
 - Extended properties dialog, 427, 431
 - Extending Report Manager, 35–36
 - Extensible Stylesheet Language
 - Transformations (XSLT), 27
 - Extension interface, 617
 - @ExtensionSettings parameter, 188
 - External images, 357–359
 - custom code for, 364–365
 - formatting, 360–362
 - issues with, 363–364
 - user-enabled fields in, 360
- F**
- Feature Selection dialog, 46, 53, 63
 - Field Value property, 401
 - Fields
 - for Chart controls, 391–393, 401
 - Category, 395–396
 - Data, 394–395
 - Series, 397
 - for DataSet filters, 274–278
 - for DataSets, 268–270
 - for external images, 360
 - for Matrix controls, 116, 428
 - for Report Designer, 13
 - for subscriptions, 185
 - Fields collection, 301
 - Fields Selector Window, 269
 - FILEEXTN column, 189
 - FileIOPermission errors, 465, 471–472
 - <FileShareConfiguration> element, 193
 - Fill tab, 416–417
 - Fills for Chart controls, 416–417
 - Filtering
 - DataSet data, 270–271

- case-sensitive comparisons in, 273–274
 - NULL fields in, 272
 - string fields in, 272
 - wildcards in, 272
 - Knowledgebase, 707–708
 - Table controls, 374
 - FilterValue operators, 275
 - FindItems Method, 567–569
 - First function, 332
 - First Reports Project, 113
 - FirstMatchCodeGroup class, 479
 - Flags element, 458
 - Float data type, 285
 - Folders
 - deleting, 144–145
 - in rendering reports, 156–157
 - report items in, 565–569
 - Report Manager for, 33–34
 - for roles, 581–582
 - FontWeight property, 373
 - Footers
 - eliminating, 380
 - in report layout, 327–328
 - templates for, 450–451
 - working with, 378–380
 - Foreign Key columns in GuiQD JOINS, 262
 - Format property
 - in Matrix controls, 119, 430
 - in Rectangle controls, 348
 - in Report wizard, 107
 - in RSReportHost, 21
 - in Textbox controls, 338–339
 - Formats in rendering reports, 154–156
 - Formatted SQL strings, functions for, 302–303
 - Formatting
 - external images, 360–362
 - in Matrix reports, 119
 - Forward slashes (/) in URLs, 499
 - 403.9 errors, 41–42, 703–705
 - Free form control hosting, 334
 - FsiDataExtension.dll file, 607
 - FullTrusts
 - for assemblies, 609
 - for Data Processing extensions, 641
 - in NamedPermissionSets section, 473
 - Functions, custom, 301–306
 - Fx option, 293, 405
- G**
- General hyperlink for linked managed reports, 199
 - General tab
 - for cached data, 321
 - for Chart controls, 399
 - for Data Processing extensions, 252
 - for DataSet transactions, 263–264
 - for encryption, 49
 - for grids, 331
 - for languages, 172
 - for List controls, 346
 - for Matrix controls, 122
 - Generic query designer, 258–260
 - Geographical Information screen, 679
 - Geometries, report, 452
 - Get command, 500
 - Get Online Help link, 145
 - GetCustomerSQL function, 308
 - GetDataSourceContents function, 499
 - GetEnumerator method, 626–627
 - GetEventLogEntries method, 635, 637–638
 - GetParameters method
 - in EventLogCommandClass, 627–628
 - in IDbCommandAnalysis, 617, 625, 632–633
 - GetReportDataSources method, 575
 - GetReportDefinition method, 583–584
 - GetResourceContents method, 499
 - Global variables, 328–330
 - Gradients
 - for Chart controls, 417
 - for Textbox controls, 448–449
 - GRANT statement, 222

720 Index

- Graphical Query Designer (GuiQD) for
 - DataSets, 260–261
 - JOINs with, 262–263
 - for stored procedures, 261
- Graphical User Interface (GUI) in Report wizard, 95–96
- Grayscale for Chart controls, 417–418
- Greater than signs (>) in DataSet filters, 275
- Greeked graphics, 447
- GreenBars in Matrix controls, 433–436
- Grids, snapping controls to, 331
- Group-by fields in Report wizard, 99–100
- GROUP BY queries for external images, 357–358
- Group properties for Table controls, 375–376
- Grouping
 - in List controls, 345–351
 - in Matrix controls, 120–127, 431–433
 - in Report wizard, 107–110
- Grouping and Sorting Properties dialog
 - for Matrix controls, 124, 431–434
 - in Report wizard, 109–110
- Groups tab for Matrix controls, 429
- GUI (Graphical User Interface) in Report wizard, 95–96
- GUIDs
 - for encrypted credentials, 460
 - <InstallationID> for, 67, 81–82
- GuiQD (Graphical Query Designer) for
 - DataSets, 260–261
 - JOINs with, 262–263
 - for stored procedures, 261
- H**
- Hash evidence, 477
- Hashing for Chart controls, 417–418
- HashMembershipCondition class, 477
- Headers
 - eliminating, 380
 - in report layouts, 327–328
 - templates for, 450–451
 - working with, 378–380
- Height property, 326–327
- HelloWorld.htc behavior file, 528
- Help for Report Manager, 35
- Hidden option for Matrix controls, 127
- Hidden property
 - with drilldown, 366
 - for Subreports, 383
- Hide Details view, 230
- Hiding Subreports, 383–385
- Historical reports, sorting, 343–345
- History
 - IF for, 30–31
 - properties for, 175–176
 - Report Manager for, 34–35
 - SOAP for, 585–587
- History rights to user accounts, 177–178
- History snapshots, limits of, 213
- History tab, 153, 175
- HistoryID parameter, 590
- Horizontal chart rotation, 406–407
- HTML
 - exporting managed reports to, 155
 - rendering, 588–589
 - source files, 496
- HTML forms in URL addressing, 513–517
- HTMLViewer.css style sheet, 518
- HTTP certificate requests
 - accessing, 682–683
 - advanced, 684
 - copying, 684–685
 - downloading certificates in, 690
 - pasting, 686
 - pending, 686–687, 691
 - responses for, 689
 - selecting to query, 689
 - for stand-alone Certificate Authorities, 693–695
 - status of, 688
 - submitting, 684–685

HTTP postback in URL addressing,
513–517

HTTPS, SSL for, 57–58
https:// prefix, 663

I

Icon Resource Id (IconResId) element,
458

IconDll element, 457

IDataParameter interface, 617, 625–626

IDataParameterCollection interface, 617,
626–627

IDataReader interface, 617

IDataReaderExtension interface, 617, 637

IDbCommand interface, 617, 625,
628–636

IDbCommandAnalysis interface, 617, 625,
628–636

IDbConnection interface, 617, 619

IDbConnectionExtension interface, 617,
619–620

IDbTransaction interface, 617

IDbTransactionExtension interface, 617

IF (Intermediate Format)
caching, 30–32

Report Processor for, 29–30

IFrameless Approach, 600–601

IFRAMEs, 531–532, 544–545

IIF (inline if) statements, 343

IIS

installation on, 47, 51–64

MaxConnections in, 136, 703–705

IIS certificate wizard, 654–658, 674–683,
691–692

IIS Metabase Editor, 703–705

IISRESET command, 42, 232

IL (intermediate language), 4

Image property, 601

Image wizard, 356, 363

Images, 352–353

adding to reports, 355–356

BackgroundImage property for,
353–354

external. *See* External images

Images folder, 523

Impersonate Privilege, 42

Impersonation, 639–640

Implements operator, 621

In operator, 275

Indexed views for external images,
357–358

Individual subscriptions, 179–181

Inline if (IIF) statements, 343

Input parameters for custom code
functions, 304

Install this CA certification path option,
694

Installation

Certificate Authorities, 666–670

Reporting Services

accounts for, 47–48

auto-starting in, 56

command-line options for, 51

on domain controllers, 42

final steps in, 63–64

on IIS servers, 47, 51–64

licensing in, 50, 63

log files in, 65–66

in non-default websites, 64–66

on one machine, 43–45

operating system choices in, 39–41

pathways for, 39–41

Report Designer, 45–46

Report Server database selection in,
58–59

Sample AdventureWorks2000

database, 46–47

samples setup in, 63

Setup Wizard preparation, 52–53

SMTP mail configuration in, 60–62

SSL in, 695–697

testing, 73–78

virtual directories in, 56–58, 65

on web farms, 49–50, 79–82

web service accounts in, 53–56

sample reports, 132

722 Index

- SSL on web servers, 651–652, 695–697
 - certificate authorities on domain controllers, 652–654
 - certificates with, 658–659
 - common names in, 657–658, 677–678
 - process, 654–656
 - <InstallationID> element, 67, 81–82
 - <InstanceId> element, 67
 - Integer data type, 285
 - Integra tool, 234
 - Integrated Security, 231
 - for Data Sources, 223–234
 - and IF caching, 30–31
 - precautions for, 239
 - security risks with, 91
 - Intermediate Format (IF)
 - caching, 30–32
 - Report Processor for, 29–30
 - Intermediate language (IL), 4
 - Internationalization
 - template settings for, 446
 - Textbox controls for, 338–339
 - Internet Information Services dialog, 672
 - IsDBNull function, 278
 - IsNothing function, 278
 - ISNULL function, 425
 - ISOLATION Level for DataSet
 - transactions, 265
 - Item-level roles, 132, 578–580
 - Item-level security settings, 193–202
 - ItemTasks class, 579
 - IWAM account privileges, 42
- J–K**
- JET (Joint Engine Technology), query
 - parameters in, 280
 - JIT Debugging dialog, 565
 - Joining tables
 - from different servers, 257
 - with GuiQD, 262–263
 - for Matrix controls, 424
 - Jump to Report action, 369
 - Jump to URL action, 369
 - Kanatype sensitivity option, 267
 - Key management, 71–72
 - Knowledgebase filters, 707–708
- L**
- <Label> element for templates, 446
 - Label property, 336
 - for Document Maps, 18
 - for List controls, 367
 - Label Value pairs, 289
 - Labels
 - for chart elements, 408–413
 - for fields, 331, 337
 - Landing zones (LZs) in Chart controls, 391–394
 - Category Fields, 395–396
 - Data Fields, 394–395
 - Series Fields, 397
 - Landscape orientation, 324–327
 - Language property
 - for reports, 339, 348
 - in RSReportHost, 21–22
 - in Textbox controls, 338–339
 - Language variable, 329
 - Last run time in rendering reports, 173–174
 - Launching Subreports, 383–385
 - Layout, 321–322
 - controls. *See* Controls
 - data binding and Value property in, 322
 - drilldown in, 365–369
 - global variables in, 328–330
 - headers and footers in, 327–328, 378–381
 - images, 352–353
 - adding, 355–356
 - BackgroundImage property for, 353–354
 - external. *See* External images
 - page sizing in, 324–327

- Product Inventory and Valuation report,
 - 323–324
 - in Report Designer, 11–16
 - in Report wizard, 101
 - Subreports, 381–385
 - Layout tab
 - for Matrix controls, 120–121, 426
 - in Report Designer, 12, 325–326
 - in Report wizard, 105
 - Layout view, 284
 - LEFT OUTER JOINS, 425
 - Legends, 392
 - Less than signs (<) in DataSet filters, 275
 - Level function, 376–377
 - Libraries
 - for Data Processing extensions,
 - 616–617
 - DPAPI, 460
 - for sharing code, 306–314
 - Licensing in installation, 50, 63
 - Lightman, David, 223
 - LIKE operator, 272
 - Line charts, 400
 - Line property, 416
 - Linked reports
 - creating, 197–202
 - Report Manager for, 34
 - List controls, 333–334
 - grouping with, 345–351
 - in Report Designer, 16
 - sorting in, 339–343
 - List Properties dialog, 347
 - ListChildren method, 499, 565–566, 575
 - ListFormatExtensions.rss file, 503
 - Listing
 - report items, 565–569
 - reports with broken Data Sources,
 - 574–576
 - schedules, 572–574
 - ListReportHistory method, 587
 - ListRoles method, 579
 - ListSchedules method, 572–573
 - ListTasks method, 579
 - Literal credentials in SOAP, 561
 - Literals for strings, 331, 337
 - LocalDebug mode, 307
 - Locales
 - in collation sorting, 267–268
 - in currency formatting, 21
 - LocalizedName property
 - EventLogConnection, 623
 - IDbConnection, 619
 - Log files
 - in auditing, 234
 - execution, 214
 - in installation, 65–66
 - LogExplorer tool, 234
 - Login accounts for installation, 48
 - Login credentials and IDs, 55, 665
 - Logos in Report Manager, 526–527
 - LZs (landing zones) in Chart controls,
 - 391–394
 - Category Fields, 395–396
 - Data Fields, 394–395
 - Series Fields, 397
- ## M
- machine.config file, 70
 - Manage Reports task, 161–166
 - Manage Reports Task right, 222
 - Manage shared schedules hyperlink, 214
 - Managed reports, 4, 24, 131. *See also*
 - Report Manager
 - caching, 34–35, 167–170
 - execution time limitations for, 174–178
 - exporting, 154–156
 - history properties for, 175–176
 - item-level security settings for, 193–202
 - linked, 197–202
 - searching for, 149–152
 - snapshots for, 170–173
 - subscriptions for. *See* Subscriptions
 - Margins for controls, 330
 - Margins property, 325
 - Marker size property, 410
 - Matrix controls and reports, 112–113, 423

724 Index

- alignment in, 120
 - creating, 426–431
 - dates in, 425–426
 - deploying, 129
 - for EventLog reports, 647
 - exporting, 438–440
 - formatting in, 119
 - GreenBars in, 433–436
 - grouping and sorting in, 120–127, 431–433
 - joining tables for, 424
 - performance of, 437–438
 - in Report Designer, 14, 16
 - Report wizard for. *See* Report wizard
 - starting, 424
 - summing columns and rows in, 436–437
 - visibility in, 127–128
 - Matrix Properties dialog, 429
 - <MaxActiveRegForOneUser> element, 69
 - MaxConnections setting, 136, 703–705
 - Maximum values for Report Parameters, 291–292
 - <MaxRetries> element, 193, 699
 - Membership for RExecRole, 228–229
 - MemoryStream for PictureBox, 601
 - MenuItemSecureMethods_Click method, 558
 - Metabase Editor, 703–705
 - Microsoft Access reports, converting, 380–381
 - Microsoft Samples, Data Processing extensions for, 606–614
 - MimeType parameter in Render, 591
 - MIMETYPE property
 - for external images, 362
 - for image backgrounds, 353
 - Minimum values for Report Parameters, 291–292
 - MinuteRecurrence option, 570
 - MinutesInterval option, 570
 - Mirrored Data Sources, 245–246
 - ModifiedBy property, 567
 - ModifiedDate property, 567
 - Monitoring report processor, 440–441
 - MonthlyDOWRecurrence option, 570
 - MonthlyRecurrence option, 570
 - Mscorcfg.msc file, 491
 - MSDE, 39
 - MSDN Universal, 50
 - Multiple-value select reports, 534–546
 - MultipleSelects1.htm file, 537–538
 - MultipleSelects2.htm file, 541
 - MultipleSelects3.htm file, 541
 - My Reports folder, 211–213
 - My Reports role, 33, 141
 - My Subscriptions link, 180
 - MyReports feature, 243
- N**
- Name and Security Settings screen, 676
 - Name element, 456
 - Name property
 - for Matrix reports, 124
 - in searches, 567
 - NamedPermissionSets section
 - for Code Access Security, 473–475
 - for Data Processing extensions, 610–611
 - Names
 - certificates, 656
 - DataSet fields, 269
 - groups, 431–433
 - parameters, 283
 - projects, 89
 - reports, 103–104, 249–250
 - roles, 146
 - site, 211
 - in SSL installation, 654, 657–658, 677–678
 - Textbox controls, 330–331
 - Navigation
 - rendering extension parameters for, 505–506
 - in Subreports, 384–385
 - Navigation tab, 384–385
 - .NET assemblies, 17

- NetBIOS name in SSL installation, 654, 657–658, 677–678
 - New Folder button, 156–157
 - New Project dialog, 89, 247–248, 592
 - New reports, 247
 - DataSets for. *See* DataSets
 - projects for, 247–251
 - shared Data Sources for, 251–256
 - New Role Assignment option, 140, 195
 - New Snapshot option, 175
 - New Subscription option, 192
 - New System Role screen, 208–209
 - New System Role Assignment screen, 209–210
 - NIH (Not Invented Here) syndrome, 336
 - NoData property, 391
 - Non-default websites, installation in, 64–66
 - Non-string fields in filters, 276–277
 - NoRepeat property, 354
 - NoRows property, 415
 - Not Invented Here (NIH) syndrome, 336
 - NOT IS NULL clause, 391
 - Nothing permission sets, 473
 - NULL values
 - for Chart controls, 391
 - with filters, 270–272, 276–277
 - for Matrix controls, 425
 - Number of connections, 41–42, 136, 703–705
 - Numeric fields in DataSet filters, 276–277
- O**
- ODBC
 - drivers for, 3
 - query parameters in, 280
 - Office Web Components (OWCs)
 - exporting Matrix controls to, 438–440
 - for managed reports, 155–156
 - OLE DB, 3, 93
 - Open architecture, 3
 - Open method, 622
 - Operating system choices in installation, 39–41
 - Operators in DataSet filters, 274–275
 - Option Compare Binary setting, 273
 - Option Compare Text setting, 273
 - Option Strict directive, 551–552, 592
 - OPTION values for multiple-value selection, 539
 - Options dialog for templates, 446
 - or operator in DataSet filters, 278
 - Oracle query parameters, 280
 - ORDER BY clause, 407
 - Organization Information screen, 656, 676–677
 - Orientation, page, 324–327
 - OUTPUT parameters with stored procedures, 261, 297–298
 - Overlapping
 - controls, 381
 - labels, 412
 - OverwriteDataSources property, 245
 - Overwriting reports, 244
 - OWCs (Office Web Components)
 - exporting Matrix controls to, 438–440
 - for managed reports, 155–156
- P**
- Padding property, 362
 - Page headers and footers
 - eliminating, 380
 - in report layout, 327–328
 - templates for, 450–451
 - working with, 378–380
 - Page_Load event handler, 594–596
 - Page Not Found errors, 76
 - PageFooter section, 16
 - PageHeader section, 16
 - PageNumber variable, 328
 - Pages, sizing, 324–327
 - PageSize property, 325–327
 - Palette property, 416
 - Paper size, 324–327

726 Index

- ParameterCollection class, 625–628
- Parameters, 279–280
 - ASP.NET web forms for, 546
 - Cascading, 294–297
 - for custom code functions, 304
 - for Data Processing extensions, 625–628
 - query, 280–283
 - report, 283–284
 - data types for, 285–286
 - defaults for, 290–292
 - prompt strings for, 286–290
 - as proxy controls, 379–380
 - Report Parameters dialog, 284–285
 - rights to, 162–163
 - values for, 286–290
 - in Report Manager, 530–534
 - RETURN and OUTPUT, 297–298
 - in sorting, 341–344
 - for Subreports, 382
 - URL, 500–507
 - passing, 511–513
 - Service Pack 1 for, 517–518
- Parameters class, 625–628, 634
- Parameters dialog, 632
- Parameters interface, 617
- Parameters method, 628
- Parameters property, 625, 633–634
- Parameters tab
 - for DataSets, 282
 - for Subreports, 382
- ParametersUsed parameter, 591
- ParamParserFn.sql function, 535–537
- Parents of Subreports, returning to, 385
- Passwords
 - for Data Processing extensions, 648
 - for Data Sources, 23
 - encryption for, 136, 512
 - for RSExecRole, 229
 - in runtime prompting, 223
 - in SOAP, 561
 - SSL for, 665
 - for subscriptions, 188
 - as URL parameters, 511–513
 - user, 136
- Pasting certificate requests, 686
- PDF, exporting managed reports to, 154–155
- Pending certificate requests, 686–687, 691
- Performance
 - of Matrix controls, 437–438
 - of Report Manager, 133
- Permissions. *See also* Rights
 - for Administrators Group, 139
 - errors in, 76
 - for policy files, 473, 475–479
 - Report Manager for, 33
 - for sample reports, 143–144
 - SQL, 55
 - in style sheets, 471–475
- Permissions class, 471
- <PermissionSet> element, 474
- PermissionSets
 - for Code Access Security, 473–475
 - for Data Processing extensions, 609–610
 - for style sheets, 491
- Persist security info option, 184
- Perspective for 3D charts, 406
- Pickup folder, 700–701
- PictureBox controls, 601–602
- Pictures, 352–353
 - adding to reports, 355–356
 - BackgroundImage property for, 353–354
 - external. *See* External images
- Piddle files, 550
- Pie charts, 400, 405–408
- PivotTables, 156, 423, 439
- PKI (Public Key Infrastructure), 662
- Pling operator (!) in DataSet filters, 274–275
- Plot areas in Chart controls, 416
- Plug In Drawing Does Little Else files, 550
- Plus signs (+)
 - in searches, 149

- in URLs, 499
 - Point Labels tab, 410
 - Policy files, 69
 - permissions for, 473, 475–479
 - StrongNameMembershipCondition in, 487–488
 - for style sheets, 466–471
 - <Polling-Interval> element, 73
 - Pooched systems, 508
 - Portrait orientation, 324–327
 - Post-development folders, 243–244
 - Post method, 514
 - Potential Scripting Violation warning, 694
 - Prefixes in URL addressing, 500–507
 - Previewing and Preview tab
 - for expressions, 300
 - for images, 354
 - for Matrix controls, 127–128, 429, 434
 - with referenced assemblies, 307, 310
 - in Report Designer, 19–22
 - in Report wizard, 104, 110, 118–119
 - reports, 317–321
 - Primary Key columns in GuiQD JOINS, 262
 - Primary parameters in Cascading Parameters, 294
 - Printers, grayscales for, 417–418
 - Printing
 - Delivery extensions, 28–29
 - server-side, 603–604
 - PrintOnFirstPage property, 327
 - PrintOnLastPage property, 327
 - Private keys in strong naming, 482
 - prjBuildSQL.DLL file, 309–310
 - prjBuildSQLAssemblyInfo.VB file, 307
 - Process a Pending Request screen, 691
 - Product Catalog report, 153
 - Product Inventory and Valuation report, 323–324
 - Production environments, debugging in, 598
 - Production folders, 243–244
 - profile parameter, 136
 - Programmability in Report Designer, 16–18
 - Programming Chart controls, 403–405
 - Projects
 - creating, 247–251
 - images in, 355
 - names for, 89
 - Prompt strings
 - removing, 379–380
 - for Report Parameters, 286–290
 - Prompted credentials, 516–517
 - Properties and Properties tab
 - accessing, 312–314
 - in assemblies, 17
 - for Data Sources, 238
 - for DataSets, 240
 - in Matrix reports, 121, 126
 - in overwriting reports, 244
 - in Report Manager, 153
 - in Report wizard, 96
 - Properties option, 96
 - Prototypes for Chart controls, 393
 - Proxy controls, 379–380
 - Public Key Infrastructure (PKI), 662
 - Public keys in strong naming, 482
 - PublicKey Blobs, 488
 - Publisher evidence, 477
 - Publisher role, 33, 141
 - PublisherMembershipCondition class, 477
 - PublishSampleReports.rss script, 132
- ## Q
- Queries
 - for certificate requests, 689
 - for DataSets
 - fields for, 268–270
 - options for, 265–268
 - in Report wizard, 94–96, 114–115
 - Query Builder, 95–98
 - Query designers
 - generic, 258–260
 - GuiQD, 260–263
 - Query parameters, 280–283

728 Index

QueryString for Data Processing
extensions, 616

Question marks (?) for query parameters,
280

R

rc: prefix in URL addressing, 501, 504–507

rc:DocMapID parameter, 505

rc:EndFind parameter, 506–507

rc:FallbackPage parameter, 506–507

rc:FindString parameter, 506–507

rc:LinkTarget parameter, 506

rc:Parameters parameter, 504, 517–518

rc:Section parameter, 505

rc:StartFind parameter, 506–507

rc:StyleSheet parameters, 517–518

rc:Toolbar parameter, 504

rc:Zoom parameter, 505

<rd:InitialDimension> element, 454

<rd:properties> element, 453

<rd:ReportID> element, 454

RDL (Report Definition Language) files, 4

code for, 22–23

Data Sources in, 90

images in, 355

in linked reports, 34

moving, 246

SOAP for, 583–585

uploading, 160–161

RDL extension, 4

RDS (Report Data Source) files, 23–24, 88

READ COMMITTED isolation level, 265

Ready to Install dialog, 63

Recovering deleted shared Data Sources,
204–206

Rectangle controls, 346–351

RecurrencePattern class, 569–571

References property, 488

References Collection property, 18

References tab, 310, 313, 469

Refresh button, 165–166

Refresh Fields option, 284

Refreshing documentation, 84

Registering Data extensions, 613–614

Registration Information dialog, 52

Registry keys

for CD keys, 46

for website search, 152

RelativePathName element, 455

Removing

folders, 144–145

Reporting Services, 82–84

snapshots, 176

Renaming parameters, 283

Render command, 499

<render> element, 155

RENDER_FORMAT column, 189

Render method

input parameters, 590–591

output parameters, 591–600

with sessions, 602–604

for SOAP, 510, 588–589, 597

Rendered reports, 16–17

Rendering extensions

displaying, 19

in Report Designer, 17

in Report Server, 26–27

in URL addressing, 504–507

Rendering HTML, 588–589

Rendering reports, 153–154

caching in, 167–170

Data Sources in, 163–164

with external images, 362

folder management in, 156–157

formats in, 154–156

last run time in, 173–174

Manage Reports task in, 161–166

managed report execution time in,
174–178

resources in, 157–161

snapshots in, 170–173

with SOAP, 588–589

ASP.NET IFrameless approach,
600–601

Render method input parameters,
590–591

- Render method output parameters, 591–600
 - sessions in, 602–604
 - with Windows forms application, 601–602
- RenderStream method, 589, 591
- Repairing deleted Data Sources, 574–578
- Repeat property, 353–354
- RepeatOnNewPage property, 371, 380
- RepeatWith property
 - for headers, 450
 - vs. headers and footers, 380
 - for Table controls, 336–338, 371–372
- RepeatX property, 354
- RepeatY property, 354
- replaceUrl function, 532–533, 545
- Replacing files, 609
- Report Data Source (RDS) files, 23–24, 88
- Report Definition Language (RDL), 4
 - code for, 22–23
 - Data Sources in, 90
 - images in, 355
 - in linked reports, 34
 - moving, 246
 - SOAP for, 583–585
 - uploading, 160–161
- Report definitions, 3
- Report Designer, 3–7
 - control layout in, 11–16
 - Data Sources for, 8
 - DataSets for, 8–11
 - Document Maps in, 18–19
 - installing, 45–46
 - previewing in, 19–22
 - programmability in, 16–18
 - RDL files for, 22–23
 - RDS files for, 23–24
 - Report wizard in. *See* Report wizard
 - stored credentials in, 246
- Report execution timeouts
 - Report Manager for, 34–35
 - setting, 32
 - in Site Settings, 213
- Report Expressions, 468
- Report items
 - in folders, 565–569
 - in Report Designer, 11
- Report Manager, 4–5, 32–33, 131–133, 521–522. *See also* Managed reports
 - ASP.NET web forms for, 546
 - behaviors in, 527–530
 - for caches, 34–35
 - cascading style sheets for, 523–525
 - company logos in, 526–527
 - Data Sources in, 34, 202–207
 - extending, 35–36
 - for folder management, 33–34
 - help for, 35
 - Images folder for, 523
 - for linked reports, 34
 - log file for, 66
 - multiple-value selection in, 534–546
 - parameters area for, 530–534
 - performance of, 133
 - rendering reports in. *See* Rendering reports
 - role-based security in, 132–133
 - users and administrators in, 134
 - viewing reports in, 148–149
 - web browser credentials in, 134–148
 - searching in, 149–152
 - for security permissions, 33
 - for shared Data Sources, 34
 - for shared schedules, 34
 - for site settings. *See* Site Settings
 - for subscriptions. *See* Subscriptions
 - summary, 216–217
 - users and administrators in, 134
- Report parameters, 283–284
 - data types for, 285–286
 - defaults for, 290–292
 - prompt strings for, 286–290
 - as proxy controls, 379–380
 - Report Parameters dialog, 284–285
 - rights to, 162–163
 - in URLs, 513

730 Index

- values for, 286–290
- Report Parameters dialog, 284–285, 288, 341–342
- Report Path parameter, 590
- Report Processor
 - characteristics of, 29–30
 - monitoring, 440–441
- Report Project template, 247–248
- Report Project wizard, 6, 87–89, 247. *See also* Report wizard
- Report Properties dialog, 469
- Report.RDL template, 451–453
- Report Scripting Utility (rs.exe), 4, 502–503, 510–511
- Report Server, 5, 24–25
 - for credentials, 224–225
 - database selection for, 58–59
 - Delivery extensions in, 27–29
 - for IF caching, 30–32
 - log files for, 66
 - rendering extensions in, 26–27
 - Report Processor in, 29–30
 - session management for, 507–511
 - Site Settings for, 215
 - Windows service polling in, 72–73
- Report Server Database screen, 225–226, 228
- Report Server Email extension node, 61
- Report wizard, 87, 448
 - for Matrix reports
 - column width in, 118–119
 - control design in, 116
 - control style in, 117
 - Data Sources in, 114
 - final steps, 117–119
 - launching, 113
 - previewing, 118–119
 - query design in, 114–115
 - report type in, 114–115
 - for Table reports
 - aggregates in, 106
 - Application Name properties in, 91–93
 - column formatting in, 107
 - connection string display in, 93
 - Data Sources in, 89–91
 - deploying, 110–112
 - deployment location in, 102–103
 - examining reports in, 104–106
 - group-by fields in, 99–100
 - layout in, 101
 - previewing, 104, 110
 - query design in, 94–96
 - report names in, 103–104
 - report type in, 99–100
 - rowset size in, 96–99
 - sorting and grouping in, 107–110
 - table style in, 101–102
 - testing queries in, 96–98
- ReportFolder variable, 328
- ReportHistorySnapshots array, 587
- Reporting Services, 2
 - data source for, 2–3
 - main components, 3–6
 - versions, 36–37
- Reporting Services Books Online, 45, 707–708
- ReportingService class, 503, 559, 565, 602–603
- ReportingServices.CSS file, 523–524, 531
- ReportingServicesService.exe.config file, 486
- ReportingServicesService.exe service, 29
- ReportingServicesWebServer.dll file, 523
- ReportItems collection
 - for headers and footers, 378–379
 - for style sheets, 461
- ReportName property, 381
- ReportName variable, 328
- <ReportParameters> element, 344
- ReportProjectItems.vmdir file, 454–455, 459
- Reports
 - building from scratch. *See* New reports
 - geometries, 452
 - from Microsoft Access, 380–381

- names for, 103–104
- previewing and deploying, 317–321
- templates for. *See* Templates
- ReportServerTempDB file, 58
- ReportServerUrl variable, 328
- ReportStyleSheetPermission set, 480
- Request File Summary screen, 681
- RequestedFormat parameter, 590
- Resizing external images, 360–362
- Resolving common names, 657
- Resources in rendering reports, 157–161
- Responses for certificate requests, 689
- RETURN parameters, 261, 297–298
- Revert to Parent Security option, 195
- Right margins for controls, 330
- Rights. *See also* Permissions
 - to execution properties, 164–165
 - to report parameters, 162–163
 - to subscriptions, 181–182
- Risks, security
 - for Data Processing extensions, 648–649
 - with integrated security, 91
 - SQL injection, 279
- Role Assignment web page, 148
- Roles and role-based security, 33, 132–133
 - batches for, 581–582
 - item-level, 132, 578–580
 - for managed reports, 195–196
 - Site Settings for, 215
 - site-wide functionality of, 208
 - for user accounts, 139–148
 - users and administrators in, 134
 - viewing reports in, 148–149
 - web browser credentials in, 134–149
- ROLLBACK statement, 232
- Root Certificate Authorities, 654, 662, 666–667
- Rosetta service, 2–3
- Rotation for 3D charts, 406
- RowCount function, 433
- RowNumber function, 335–336
- Rows
 - limiting, 19, 96–99
 - summing, 436–437
- rs: prefix in URL addressing, 501
- rs:ClearSession parameter, 511
- rs:Command parameter, 511
- rs:Commands in URLs, 499–500
- rs.CreateReportHistorySnapshot method, 585–586
- rs:DocMap parameter, 504
- rs.exe (Report Scripting Utility), 4, 502–503, 510–511
- rs:Format parameter, 501–503
- rs.GetReportDefinition method, 583–584
- rs:ParameterLanguage parameter, 517–518
- rs:SessionID parameter, 511
- rs:Snapshot parameter, 504
- rsactivate.exe program, 70–71
- rsconfig.exe program
 - for credentials, 72
 - for RSExecRole, 229
 - for Unattended Execution Account, 357
- RSDocRefresh.msi file, 84
- <RSEmailDPConfiguration> element, 699
- RSExecRole
 - creating, 225–227
 - membership for, 228–229
- rskeymgmt.exe program, 71–72
- rsmgrpolicy.config file, 466
- RSPreviewHost.exe file, 642–643
- rspreviewpolicy.config file, 466
 - for CodeGroups, 478–479, 612
 - for NamedPermissionSets, 473–474, 490
- RSReportDesigner.config file, 69
 - for caching, 320
 - for Data Processing extensions, 643–644
- RSReportHost utility, 20–22, 318–319, 470–471
- RSReportServer.config file, 67
 - contents of, 61–63

732 Index

- for Data Processing extensions, 613, 642–643
- methods in, 558
- for SMTP, 700
- for SSL, 68, 696
- for subscription delivery, 193
- RSSETUPACCOUNT option, 48–49
- RSSETUPPASSWORD options, 48–49
- RSsrvcpolicy.config file, 466
 - for CodeGroups, 492, 611–612
 - for Data Processing extensions, 641–642
 - for NamedPermissionSets, 490, 610–611
- RSStp_.cab file, 65
- RSstrongNameStyleSheet assembly, 488
- RSstylesheet.dll file, 467–469
- <RSTrace> element, 66
- RSWebApplication.config file, 63
 - contents of, 68
 - for help link, 145
 - for SSL, 696
 - for subscription delivery, 192
- Run As dialog, 671–672
- RunAs.exe shortcuts, 135
- RunningRequestsDbCycle setting, 32
- RunningValue function, 306
 - for lists, 335–336
 - in Matrix controls, 433–436
- Runtime prompting for Data Sources, 223–224
- Runtime trace log files, 66

S

- Sales People report, 165, 170–173
- Sample reports and databases
 - installing, 46–47, 53, 63, 132
 - permissions for, 143–144
- SampleReports folder, 201
- SampleReports project, 74–78
- savecred parameter, 135–136
- Scaling in Chart controls, 414
- Scatter charts, 400, 419–423

- Scheduled Jobs
 - managing, 72–73
 - in uninstallation, 83
- ScheduleDefinition class, 571–572
- ScheduleID property, 573
- Schedules, 569
 - issues with, 571–572
 - listing, 572–574
 - RecurrencePatterns for, 569–571
 - shared
 - Report Manager for, 34
 - Site Settings, 214–215
 - snapshot, expiration date for, 172–173
 - for subscriptions, 190–191
- Search feature on websites, adding, 151–152
- SearchCondition class, 567–568
- Searches.htm file, 158–160
- Searching
 - in Knowledgebase, 707–708
 - rendering extension parameters for, 506–507
 - in Report Manager, 149–152
- SearchUrl key, 152
- Secondary parameters in Cascading Parameters, 294
- <SecondsBeforeRetry> element, 193
- Secure methods in SOAP, 558–561
- Secure Sockets Layer (SSL), 651
 - certificates for, 661–662
 - CAs for. *See* Certificate Authorities (CAs)
 - IIS certificate wizard for, 654–658
 - issues with, 658–659
 - obtaining, 666–667, 670–693
 - for web servers, 40, 43–44, 670–693
 - configuration files for, 68, 696–697
 - importance of, 57–58, 663
 - for Reporting Services, 40, 43–44, 663–665, 695–697
 - on web servers, 651–652, 695–697
 - Certificate Authorities on domain controllers, 652–654

- certificates with, 658–659
- common names in, 657–658, 677–678
- process, 654–656
- working with, 665
- SecureConnectionLevel, 63
- Security, 1, 219–220
 - code access. *See* Code access security (CAS)
 - credentials. *See* Credentials
 - for Data Processing extensions, 648–649
 - for Data Sources, 225–228
 - auditing, 234
 - credentials stored for, 224–225
 - integrated security for, 230–233
 - RSExecRole membership, 228–229
 - runtime prompting, 223–224
 - shared, 203–204
 - TLS, 233–234
 - integrated, 231
 - for Data Sources, 223–234
 - and IF caching, 30–31
 - precautions for, 239
 - security risks with, 91
 - for managed reports, item-level, 193–202
 - motivation for, 220–221
 - in Report Designer, 17–18
 - role-based. *See* Roles and role-based security
 - with SQL injection, 279
 - SSL. *See* Secure Sockets Layer (SSL)
 - summary, 234–235
 - Trojan reports, 221–222
- Security Alert Dialog, 666
- Security logins, 229
- SELECT statements in Trojan reports, 222
- Select the Data Source screen, 90, 96, 114
- Select the Number of Snapshots to Keep option, 178
- Select the Report Type screen, 99–100, 115
- SelectCommand for DataSets, 240
- SemiTransparent shading, 418–419
- Send the request immediately option, 675
- <SendUsing> element, 700
- Series Fields in Landing Zones, 397
- Server Certificate screen, 674
- <Server> element, 151–152
- Server-side printing, 603–604
- Servers
 - with IIS, installation on, 47, 51–64
 - joining tables from, 257
 - operating systems for, 41
 - web. *See* Web servers, SSL installation on
- Service Account dialog, 53–56
- Service Oriented Architecture Protocol. *See* SOAP (Service Oriented Architecture Protocol)
- Service Pack 1 (SP1)
 - for chart elements, 413
 - installing, 85
 - for URL addressing, 517–518
- SessionData tables, 510
- SessionID property, 602–604
- SessionID variable, 508–510
- SessionIDs in URLs, 602
- Sessions
 - for Report Servers, 507–511
 - in SOAP, 602–604
- Set security, 193–194
- SetConfiguration method, 619, 622–623, 643
- SetPolicies method, 581
- SetRoleProperties method, 579
- Setup program, 51
 - for installation, 43–44
 - preparation of, 52–53
 - for SSL, 663–664
- Shading for Chart controls, 418–419
- Shared code, libraries for, 306–314

734 Index

- Shared credentials (SSPI)
 - for Data Sources, 223–234
 - and IF caching, 30–31
 - precautions for, 239
 - security risks with, 91
- Shared Data Source dialog, 254–255, 614
- Shared Data Sources, 23
 - characteristics, 206–207
 - creating, 245, 251–256
 - deleted, recovering, 204–206
 - Report Manager for, 34
 - security concerns for, 203–204
- Shared functions for images, 364–365
- Shared schedules
 - Report Manager for, 34
 - Site Settings for, 214–215
- Shortcuts for RunAs.exe, 135
- Show Details option, 143, 157
- Show Details view, 230
- ShowHideToggle parameter, 591
- Single transactions for DataSets, 263–265
- Site evidence, 477
- Site Settings, 207–210
 - for execution logging, 214
 - for history snapshot limits, 213
 - My Reports folder for, 211–213
 - names, 211
 - for report execution timeouts, 213
 - for roles and report server security, 215
 - for shared schedules, 214–215
- Site Settings hyperlink, 207–210
- Site-wide Roles and Tasks, 208
- SiteMembershipCondition class, 477
- Size
 - external images, 360–362
 - pages, 324–327
 - rendering extension parameters for, 505
- Sizing property, 361–362
- Slashes (/) in URLs, 499
- SMTP configuration, 60–62, 699–700
 - in installation, 60–62
 - Pickup folder, 700–701
 - warnings for, 700–701
- <SMTPConnectionTimeout> element, 699
- <SMTPServerPickupDirectory> element, 700–701
- <SMTPServerPort> element, 699
- <SMTPUseSSL> element, 699
- sn.exe program, 487–488
- SnagIt processor, 360
- Snapping controls to grid, 331
- Snapshots
 - deleting, 176
 - history limits for, 213
 - IF for, 30–31
 - for managed reports, 170–173
 - Report Manager for, 34–35
 - SOAP for, 585–587
 - sorting, 343–345
 - in URLs, 504
- SOAP (Service Oriented Architecture Protocol), 4, 25, 549–550
 - for batches for roles, 581–582
 - exception handling in, 562–565
 - for history, 585–587
 - item-level role definitions in, 578–580
 - listing report items in, 565–569
 - Option Strict for, 551–552
 - for RDL files, 583–585
 - rendering reports with, 588–589
 - ASP.NET IFrameless approach, 600–601
 - Render method input parameters, 590–591
 - Render method output parameters, 591–600
 - sessions in, 602–604
 - with Windows forms application, 601–602
- for repairing deleted Data Sources, 574–578
- for Report Manager, 521–522
- for schedules, 569–574
- secure methods in, 558–561
- server-side printing in, 603–604

- sessions in, 602–604
- SSL for, 665
- support for, 26
- web references for, 552–558
- <soap:addresslocation> attribute, 556
- SoapException class, 585
- Solution Configuration setting, 20
- Solution Explorer, 248–249
- Sorting
 - DataSets, 266–268
 - in List controls, 339–343
 - in Matrix reports, 120–127, 431–433
 - in Report wizard, 107–110
 - in Snapshots and Historical reports, 343–345
- SortPriority element, 456
- Source files, HTML, 496
- Source property for images, 353, 355
- Sources, data. *See* Data Sources
- sp_OACreate stored procedure, 73
- SP1 (Service Pack 1)
 - for chart elements, 413
 - installing, 85
 - for URL addressing, 517–518
- Space characters in URLs, 499
- Split method, 493
- SQL Authentication, 55
- SQL injection, 279, 534–535
- SQL Login credentials, 55, 225
- SQL Profiler traces, 507–508
- SQL queries
 - Command text, 239
 - dynamic
 - custom code functions for, 301–306
 - executing, 298–301
- SQL Server Agent, 171
 - for Report Server, 29
 - for Scheduled Jobs, 72–73
 - in uninstallation, 84
- SQL Server in installation, 58, 79–80
- SQL Server Service Manager, 171
- SQLExpress, 39
- src attribute, IFRAMES, 545
- SSL. *See* Secure Sockets Layer (SSL)
- SSL option, 695
- SSPI security
 - for Data Sources, 223–234
 - and IF caching, 30–31
 - precautions for, 239
 - security risks with, 91
- Staging folders, 243–244
- Stand-alone certificate authorities, 693–695
- Standard Edition, 37
- StartDateTime property, 570, 572
- State property, 624
- Status of certificate requests, 688
- Stock charts, 400, 413–415
- Store All Report Execution Snapshots in History option, 177–178
- Stored credentials
 - for Data Processing extensions, 648–649
 - in Report Designer, 246
- Stored procedures
 - DataSets from, 241
 - generic query designer for, 259–260
 - GuiQD for, 261
 - parameters for, 281
- StoredProcedure Command type, 259
- Storing credentials, 72
- StreamID class, 589
- StreamIds parameter, 591
- <StreamRoot> parameter, 596–597
- String data type and fields
 - in DataSet filters, 272
 - for Report Parameters, 285
- StrongName evidence, 476, 482–484
- StrongName membership condition, 482
- StrongNameMembershipCondition class, 476, 487–488
- Style, Matrix control, 117
- Style Builder dialog, 525–526
- Style Properties dialog
 - for Chart controls, 416–417
 - for labels, 412–413

736 Index

- Style sheets. *See* Cascading style sheets (CSSs)
 - <StyleSheet> parameter, 597
 - StyleSheet.rdl report, 481
 - StyleSheet.xml file, 488
 - <StyleStream> parameter, 596–597
 - <StyleTemplate> element, 447
 - StyleTemplate.xml file, 490
 - StyleTemplates.xml file, 445–446, 448–449
 - Submitting function, 540
 - Subreport Properties dialog, 382
 - Subreports, 381–382
 - hiding and launching, 383–385
 - in Report Designer, 16
 - Subscriptions, 5, 178–179
 - data-driven, 35, 182–191
 - delivery extension configuration issues
 - in, 192–193
 - individual, 179–181
 - rights to, 181–182
 - in uninstallation, 84
 - SubType property, 399–400
 - Sum function
 - in bound controls, 332
 - for bubble charts, 421
 - in Report wizard, 106
 - Summing in Matrix controls, 436–437
 - Syntax in URL addressing, 500–507
 - System Administrator tasks, 208
 - System.CodeDom, 17
 - <system.diagnostics> element, 66
 - System.Diagnostics namespace, 637
 - System-level roles, 132
 - System Roles web page, 208
 - System User tasks, 208
- T**
- T-SQL
 - in Report wizard, 94
 - for Trojan reports, 230
 - Table-based queries, GuiQD for, 260–261
 - Table controls, 335, 369–372
 - customizing and annotating, 372–374
 - recursive data structure handling in, 374–377
 - in Report Designer, 16
 - Report wizard for. *See* Report wizard
 - Table Properties dialog, 109
 - Table style, 101–102
 - TableDirect Command type, 259
 - Tables, joining
 - from different servers, 257
 - with GuiQD, 262–263
 - for Matrix controls, 424
 - Tabular Data Stream (TDS), 246
 - TargetServerURL property, 20, 318–319, 697
 - Tasks
 - for roles, 579–580
 - in security, 33
 - site-wide functionality of, 208
 - in Web browser credentials, 145–148
 - TCP/IP addresses for common names, 657
 - TDS (Tabular Data Stream), 246
 - Templates
 - base name element, 458–459
 - building, 444–449
 - clsid element, 456
 - customizing, 451–455
 - DataSource, 460
 - Description element, 456–457
 - Flags element, 458
 - for gradient fills, 448–449
 - for headers and footers, 450–451
 - IconDll element, 457
 - IconResId element, 458
 - Name element, 456
 - RelativePathName element, 455
 - selecting, 249–250
 - SortPriority element, 456
 - Temporary containers, 346–351
 - Testing
 - functions, 307
 - installation, 73–78
 - for NULL values, 278
 - queries, 96–98

- TestReports folder, 156–157
 - TestUser account, 131
 - <Testuser> element, 135
 - TextAlign property, 120
 - Textbox controls
 - binding data to, 331–332
 - creating, 329–330
 - for currency and internationalization, 338–339
 - editing, 331
 - gradient fills for, 448–449
 - images in, 354
 - names, 330–331
 - snapping to grid, 331
 - Value property, 327, 329
 - Textbox Properties dialog, 431
 - Thawte CA, 666
 - 3D Effect tab, 406–407
 - Timeouts
 - IIS, 705
 - report execution, 213
 - for Report Server sessions, 508
 - TLS (Transport Layer Security)
 - encryption, 225
 - for Data Sources, 233–234
 - for stored credentials, 246
 - Today function, 301
 - ToggleItem property, 368, 383
 - TOP expression, 96–99
 - Top N operator, 275
 - TotalPages variable, 328
 - Trace log files, 66
 - <Transaction> element, 264–265
 - Transaction interface for Data Processing
 - extensions, 617
 - Transaction logs, 234
 - Transaction property, 635
 - Transactions for DataSets, 263–265
 - Transforming images, 364–365
 - Transparency
 - of Chart controls, 416
 - of Table controls, 373
 - Transport Layer Security (TLS), 225
 - for Data Sources, 233–234
 - for stored credentials, 246
 - Trojan reports, 17
 - characteristics, 221–222
 - and integrated security, 230–231
 - TRUNCATE TABLE statements, 222
 - Trusted connections, 48
 - Tuned reports, deploying, 244
 - Tuning, configuration files for. *See* Configuration files
 - Type property, 399–400
- ## U
- Unattended Execution Account
 - credentials, 357
 - Uninstalling Reporting Services, 82–84
 - UNION statement, 305
 - Update Service for root Certificate
 - Authorities, 654
 - Url evidence, 476, 478–482
 - URL Membership condition, 482
 - URL Request Strings, 496
 - URL variable, 559
 - UrlMembershipCondition class, 476, 491
 - URLs, 495–496
 - commands in, 499–500
 - drilling, 150–151
 - HTTP postback in, 513–517
 - https:// prefix, 663
 - passwords in, 511–513
 - for Report Manager, 33
 - for Report Server, 496–499
 - Service Pack 1 for, 517–518
 - sessions in, 507–511
 - syntax and parameter prefixes in, 500–507
 - Use as Windows credentials when
 - connecting to the data source option, 168
 - Use method, 489, 493
 - Use Single Transaction option, 263–264

738 Index

Use SSL option, 57, 663–664

Use the Following Schedule to Add Snapshot to Report History option, 178

<UsedInQuery> element, 344–345

User-enabled fields, 360

User IDs for Data Sources, 23

User interface for Chart controls, 391–398

User names

- in runtime prompting, 223
- in SOAP, 561
- in subscriptions, 188

UserID variable, 329

Users and user accounts

- in Administrators Group, 211–213
- credentials for, 23
- history rights to, 177–178
- roles for, 134, 139–145

V

Values and Value property, 464

- in bubble charts, 421
- in DataSet filters, 273–274, 276
- for images, 353, 363, 365
- in report layout, 322
- for Report Parameters, 286–292
- with ReportItems, 378–379
- for strings, 337
- in Textbox control, 327, 329, 338

Values tab, 421

Variables, global, 328–330

Verisign CA, 654, 666

Versions

- binding to, 485–486
- Reporting Services, 36–37

Vertical rotation for 3D charts, 406

View folders task, 146

View tab

- for linked managed reports, 202
- in Report Manager, 153–154

Viewing

- reports in role-based security, 148–149
- resources in rendering reports, 160–161

Views for external images, 357–358

Virtual directories, 56–58, 65

Visibility Attribute, 128

Visibility in Matrix reports, 127–128

Visibility tab, 127–128

Visible attribute, 155

Visible report areas, 504–505

Visual control layout, 11–16

Visual SourceSafe, 246

W

WAP (Wireless Application Protocol), 27

Warning class, 584–585

Warnings parameter, 591

Web browsers

- credentials for, 134–139
 - assigning roles to user accounts, 139–148
 - roles and tasks in, 145–148
- languages for, 339
- for previewing reports, 319

Web Certificate Wizard, 674

web.config file, 486

Web farms, installation on, 49–50, 79–82

Web images. *See* External images

Web references for SOAP, 552–558

Web Server Certificate Wizard, 673–674, 690

Web servers, SSL installation on, 651–652, 695–697

- certificate authorities on domain controllers, 652–654
- certificates with, 658–659, 670–693
- common names in, 657–658, 677–678
- process, 654–656

Web service accounts, installing, 53–56

Web site certificates, 664

Websites, adding search to, 151–152

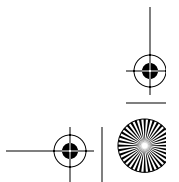
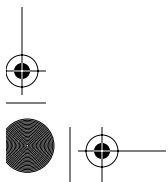
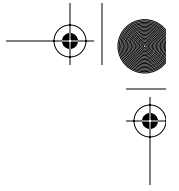
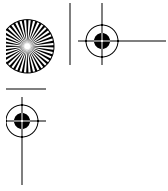
WeeklyRecurrence option, 570

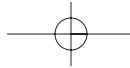
Whizzdle files, 550

Width

- in collation sorting, 267
- columns, 118–119

- pages, 325–327
 - Width option, 267
 - Width property, 325–327
 - Wildcard characters
 - in DataSet filters, 272
 - in searches, 149, 151
 - Windows 2000 best practices, 59
 - Windows Collation Sorting Styles, 265–266
 - Windows Components Wizard, 668–670
 - Windows Domain Credentials, 55
 - Windows forms applications, rendering
 - with, 601–602
 - Windows Integrated security (SSPI)
 - for Data Sources, 223–234
 - and IF caching, 30–31
 - precautions for, 239
 - security risks with, 91
 - Windows Server 2003 best practices, 59
 - Windows service
 - executing, 54
 - polling, 72–73
 - Windows XP
 - best practices for, 59
 - concurrent connections in, 41–42, 136, 703–705
 - Wireless Application Protocol (WAP), 27
 - Worker Process, 54
 - Workstations
 - Data Sources for, 244–246
 - deployment folders for, 242–244
 - operating systems for, 41
 - Write method, 594, 601
 - WRITEMODE column, 189
 - WSDL files, 550, 555–556
- X**
- X-axes in Chart controls, 392–393, 398
 - XML format and files
 - vs. policy files, 70
 - for RDL, 22
 - XSD schema, 22
 - XSLT (Extensible Stylesheet Language Transformations), 27
- Y–Z**
- Y-axes in Chart controls, 393, 398
 - Your Site's Common Name screen, 678
 - Yukon service, 2–3
 - Zone evidence, 477
 - ZoneMembershipCondition class, 477





informIT

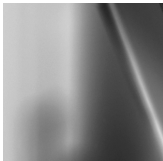
www.informit.com

YOUR GUIDE TO IT REFERENCE



Articles

Keep your edge with thousands of free articles, in-depth features, interviews, and IT reference recommendations – all written by experts you know and trust.



Online Books

Answers in an instant from **InformIT Online Book's** 600+ fully searchable on line books. For a limited time, you can get your first 14 days **free**.

POWERED BY
Safari
TECH BOOKS ONLINE™



Catalog

Review online sample chapters, author biographies and customer rankings and choose exactly the right book from a selection of over 5,000 titles.



Wouldn't it be great
if the world's leading technical
publishers joined forces to deliver
their best tech books in a common
digital reference platform?

They have. Introducing
InformIT Online Books
powered by Safari.

■ **Specific answers to specific questions.**

InformIT Online Books' powerful search engine gives you relevance-ranked results in a matter of seconds.

■ **Immediate results.**

With InformIT Online Books, you can select the book you want and view the chapter or section you need immediately.

■ **Cut, paste and annotate.**

Paste code to save time and eliminate typographical errors. Make notes on the material you find useful and choose whether or not to share them with your work group.

■ **Customized for your enterprise.**

Customize a library for you, your department or your entire organization. You only pay for what you need.

Get your first 14 days FREE!

For a limited time, InformIT Online Books is offering its members a 10 book subscription risk-free for 14 days. Visit <http://www.informit.com/online-books> for details.




POWERED BY
Safari
TECH BOOKS ONLINE

informIT
Online Books

informit.com/onlinebooks





Register Your Book

at www.awprofessional.com/register

You may be eligible to receive:

- Advance notice of forthcoming editions of the book
- Related book recommendations
- Chapter excerpts and supplements of forthcoming titles
- Information about special contests and promotions throughout the year
- Notices and reminders about author appearances, tradeshows, and online chats with special guests

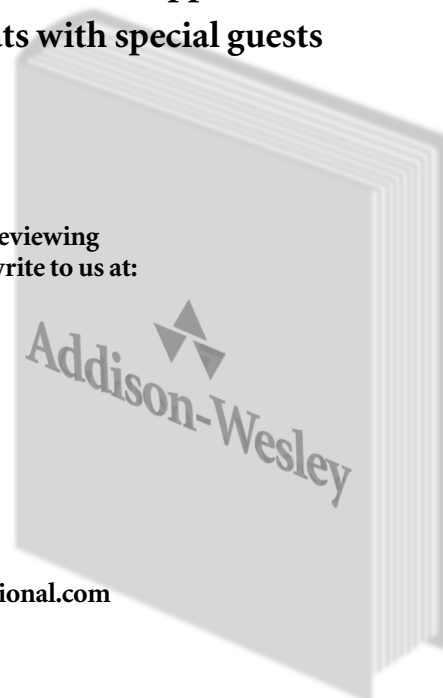


Contact us

If you are interested in writing a book or reviewing manuscripts prior to publication, please write to us at:

Editorial Department
Addison-Wesley Professional
75 Arlington Street, Suite 300
Boston, MA 02116 USA
Email: AWPro@aw.com

Visit us on the Web: <http://www.awprofessional.com>



DVD-ROM Warranty

Addison-Wesley warrants the enclosed DVD-ROM to be free of defects in materials and faulty workmanship under normal use for a period of ninety days after purchase (when purchased new). If a defect is discovered in the DVD-ROM during this warranty period, a replacement DVD-ROM can be obtained at no charge by sending the defective DVD-ROM, postage prepaid, with proof of purchase to:

Disc Exchange
Addison-Wesley Professional
Pearson Technology Group
75 Arlington Street, Suite 300
Boston, MA 02116
Email: AWPro@aw.com

Addison-Wesley makes no warranty or representation, either expressed or implied, with respect to this software, its quality, performance, merchantability, or fitness for a particular purpose. In no event will Addison-Wesley, its distributors, or dealers be liable for direct, indirect, special, incidental, or consequential damages arising out of the use or inability to use the software. The exclusion of implied warranties is not permitted in some states. Therefore, the above exclusion may not apply to you. This warranty provides you with specific legal rights. There may be other rights that you may have that vary from state to state. The contents of this DVD-ROM are intended for personal use only.

More information and updates are available at:

<http://www.awprofessional.com/>
<http://www.sqlreportingservices.net/>